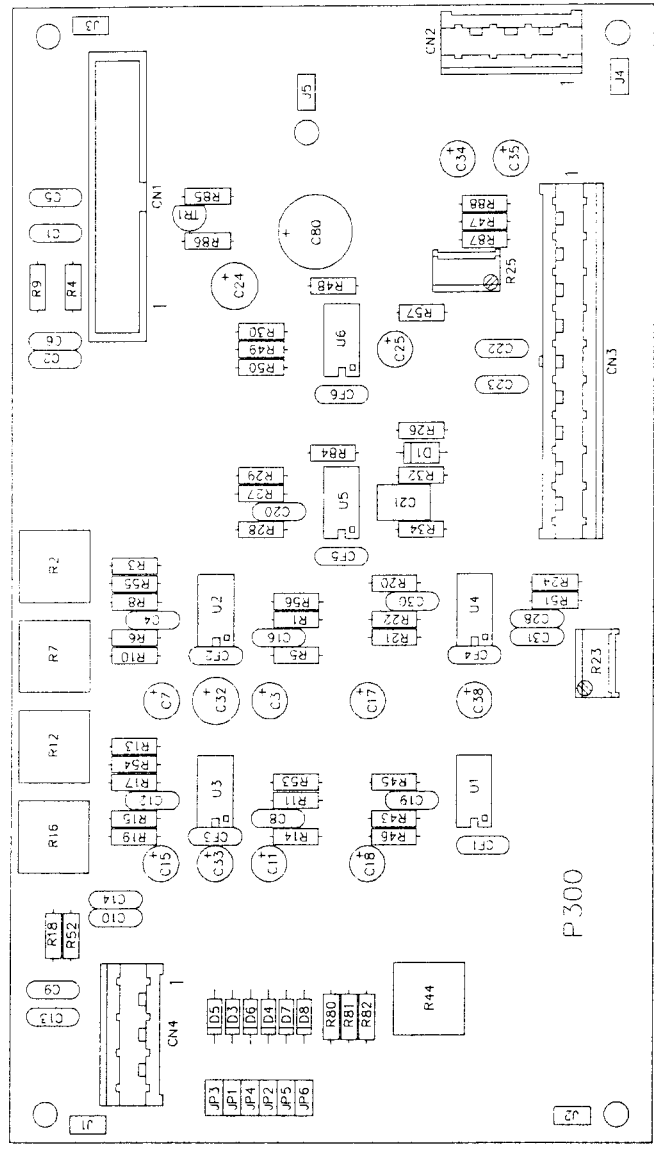


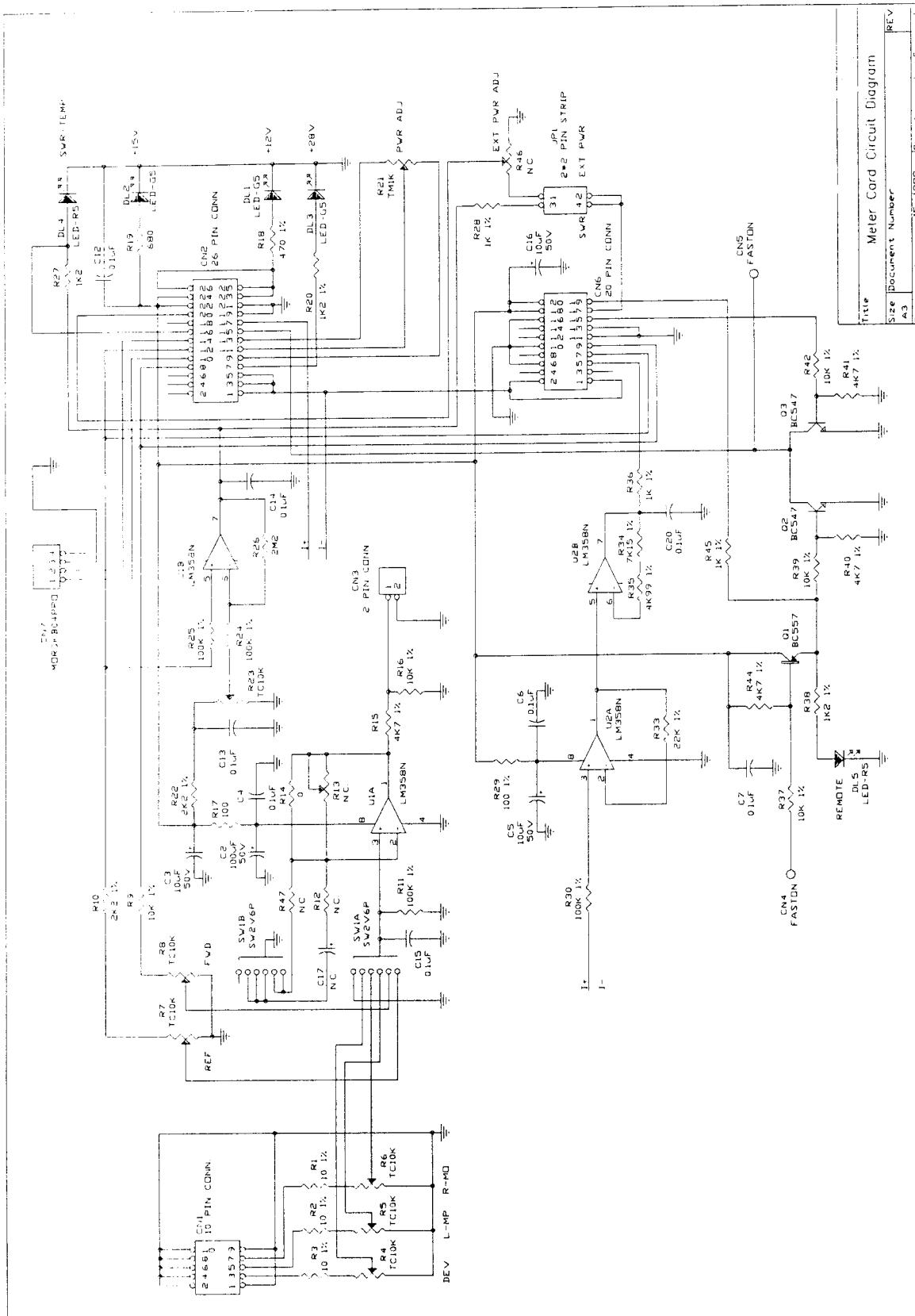
Alarms Card			Bill Of Materials		Page 2
Item	Quantity	Reference	Part	Description	Part Order Code
25	6	CF1,CF2, CF3,CF4, CF5,CF6	100nF	CERAMIC CAPACITOR	CKM104BK600P
26	1	C21	680nF	CERAMIC CAPACITOR	CKM684BK600P
27	5	C3,C7,C11, C15,C33	0.47 μ FT	TANTALIUM CAPACITOR	CET474AM350
28	5	C18,C25, C34,C35,C38	10 μ F	ELECTROLYTIC CAPACITOR	CEA106AM350
29	2	C24,C32	100 μ F	ELECTROLYTIC CAPACITOR	CEA107BM350
30	1	C80	470 μ F	ELECTROLYTIC CAPACITOR	CEA477BM350
31	6	JP1,JP2, JP3,JP4, JP5,JP6	2 PIN STRIP	STRIP M P 2.54 2 PIN	CNTSTRIPMCS
32	1	CN3	MORSKB10PPO	MORS LUMB FEMM CS 10P	MORSKB10PPO
33	2	CN2,CN4	MORSKB04PPO	MORS LUMB FEMM CS 04P	MORSKB04PPO
34	1	CN1	26 PIN CONN	CONN. M 2*13 P 2.54	CNTMCSFC26P
35	6	D3,D4,D5, D6,D7,D8	1N4148	SILICON DIODE	DIS1N4148
36	1	D1	Z12V	ZENER DIODE 12V 0.4W	DIZ12VOW4
37	1	TR1	BC237	NPN TRANSISTOR	TRNBC237
38	5	U1,U2,U3, U4,U5	LM358N	DOUBLE OP. AMP.	CILLM358N
39	1	U6	NE555	TIMER	CIL555
40	6	C17,C19, R27,C28, C30,C31	N.C.	NOT CONNECTED	



DENOMINAZIONE Alarms Card Component Layout / Piano di Montaggio			
DISPOSITIVO			
SEMILAVORATO	DISEGNATO D'Alessio D. II 15/09/98	DISEGNO	
MATERIALI	SCALA	TAVOLA n. di	
TRATTAMENTO			

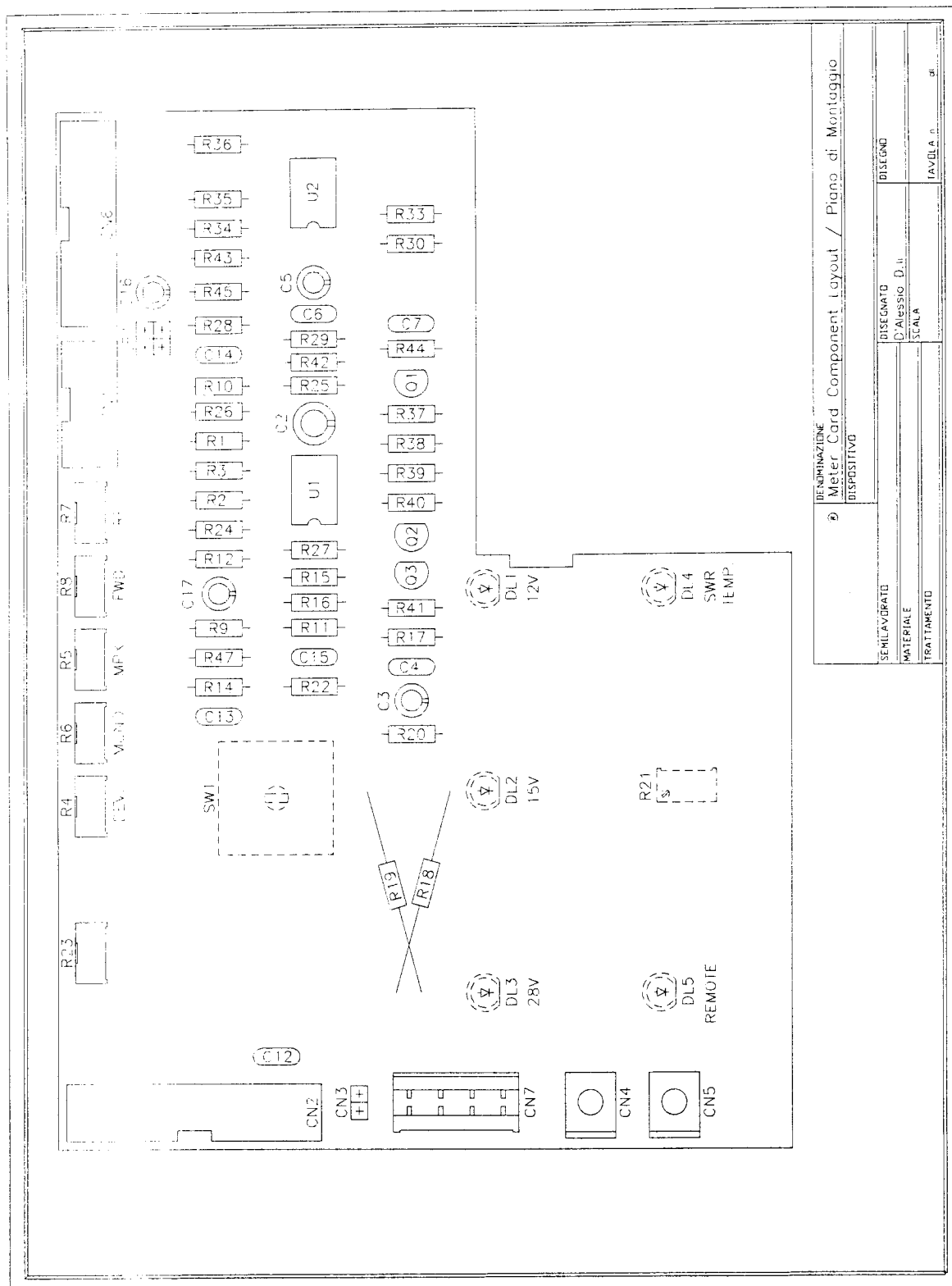
METER CARD

- A) Circuit Diagram
- B) Bill of Materials
- C) Component Layout



Meter Card			Bill Of Materials		Page 1
Item	Quantity	Reference	Part	Description	Part Order Code
1	1	R14	0	0 OHM RESISTOR	R000
2	3	R1,R2,R3	10 1%	RESISTOR 1/4W 1%	RSM1/4FH0010
3	1	R29	100 1%	RESISTOR 1/4W 1%	RSM1/4FH0100
4	1	R17	100	RESISTOR 1/4W 5%	RSC1/4JH0100
5	1	R18	470 1%	RESISTOR 1/4W 1%	RSM1/4FH0470
6	1	R19	680	RESISTOR 1/4W 5%	RSC1/4JH0680
7	3	R28,R36,R45	1K 1%	RESISTOR 1/4W 1%	RSM1/4FK0001
8	2	R20,R38	1K2 1%	RESISTOR 1/4W 1%	RSM1/4FK01,2
9	1	R27	1K2	RESISTOR 1/4W 5%	RSC1/4JK01,2
10	2	R10,R22	2K2 1%	RESISTOR 1/4W 1%	RSC1/4FK02,2
11	4	R15,R40, R41,R44	4K7 1%	RESISTOR 1/4W 1%	RSM1/4FK04,7
12	1	R35	4K99 1%	RESISTOR 1/4W 1%	RSM1/4FK4,99
13	1	R34	7K15 1%	RESISTOR 1/4W 1%	RSM1/4FK7,15
14	5	R9,R16,R37, R39,R42	10K 1%	RESISTOR 1/4W 1%	RSM1/4FK0010
15	1	R33	22K 1%	RESISTOR 1/4W 1%	RSM1/4FK0022
16	3	R11,R24,R25	100K 1%	RESISTOR 1/4W 1%	RSM1/4FH0100
17	1	R30	1M5	RESISTOR 1/4W 5%	RSC1/4JM01,5
18	1	R26	2M2	RESISTOR 1/4W 5%	RSC1/4JM02,2
19	6	R4,R5,R6, R7,R8,R23	TC10K	TRIMM REG. VERT. CERMET	RVTCERVK0010
20	1	R21	TM1K	TRIMM. MULT. REG. VERT.	RVTMULVK0001
21	8	C4,C6,C7, C12,C13, C14,C15,C20	0.1 μ F	CERAMIC CAPACITOR	CKM104BK600P
22	3	C3,C5,C16	10 μ F	ELECTROLYTIC CAPACITOR	CEA106AM350
23	1	C2	100 μ F	ELECTROLYTIC CAPACITOR	CEA107BM350
24	1	JP1	2*2 P STRIP	STRIP M P 2.54 2*2 PIN	CNTSTRIPMCS
25	2	CN4,CN5	FASTON	CONN. FASTON M CIRC ST	CNTFSTMCSGR
26	1	CN7	MORSKB04PPO	MORS. LUMB. FEMM CS 04P	MORSKB04PPO
27	1	CN3	2 PIN CONN.	CONN. M 2*1 P 2.54	CNTM2PCS

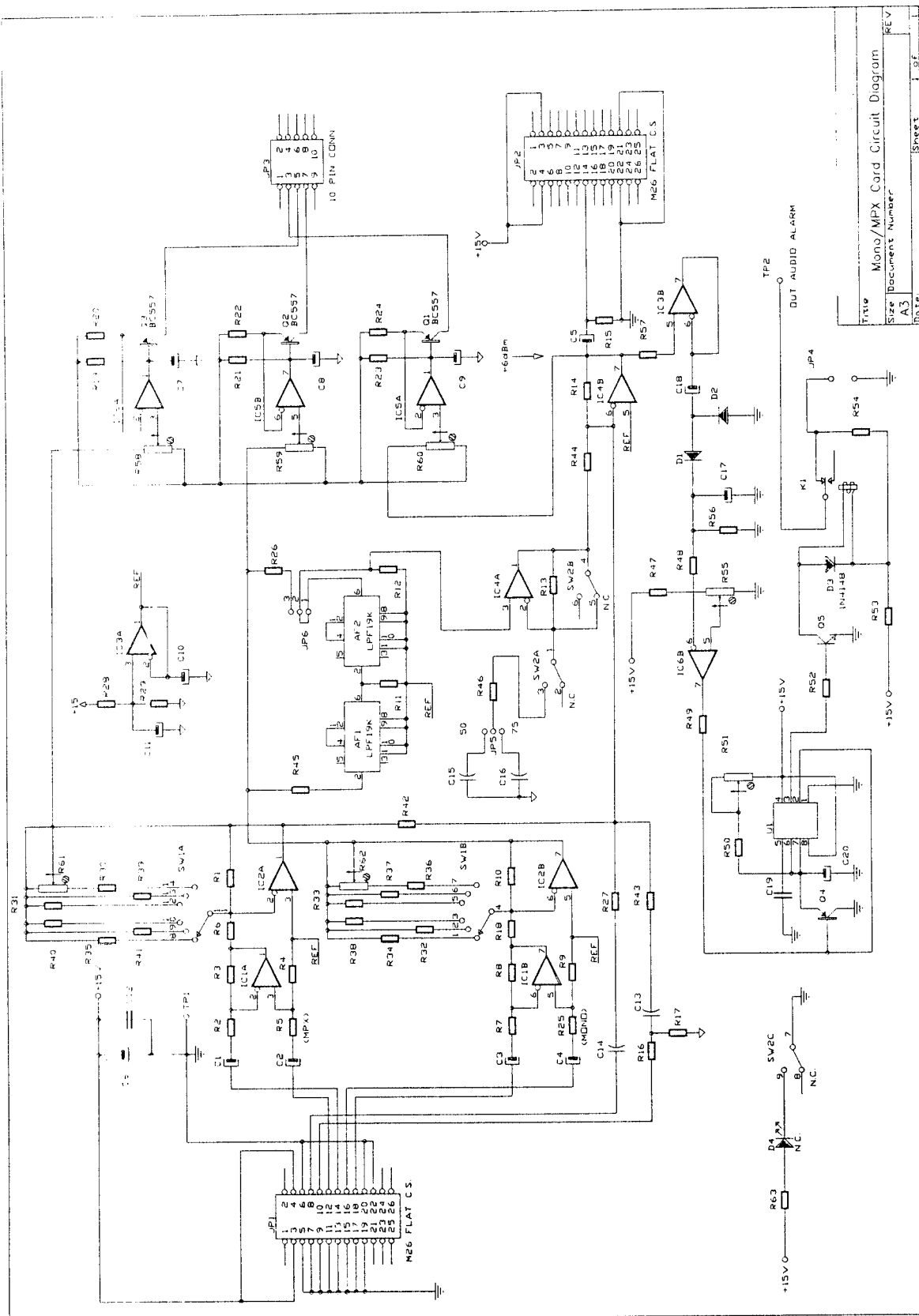
Meter Card			Bill Of Materials		Page 2
Item	Quantity	Reference	Part	Description	Part Order Code
28	1	CN1	10P CONN.	CONN. M 2*5 P 2.54	CNTMCSFC10P
29	1	CN6	20P CONN.	CONN. M 2*10 P 2.54	CNTMCSFC20P
30	1	CN2	26P CONN.	CONN. M 2*13 P 2.54	CNTMCSFC26P
31	1	SW1	SW2V6P	COMMUT. 2V 6 POS FEME	COMR2V6PCS
32	2	DL4,DL5	LED-R5	RED LED DIODE	LEDRO05
33	3	DL1,DL2,DL3	LED-G5	GREEN LED DIODE	LEDVE05
34	2	Q2,Q3	BC547	NPN TRANSISTOR	TRNBC547
35	1	Q1	BC557	PNP TRANSISTOR	TRNBC557
36	2	U1,U2	LM358N	DOUBLE OP. AMP.	CILLM358N
37	5	R12,R13, C17,R46,R47	N.C.	NOT CONNECTED	



DENOMINAZIONE Meter Card Component Layout / Piano di Montaggio	
SEMI-LAVORATO	DISEGNATO
MATERIALE	D'ALESSIO D.I.
TRATTAMENTO	SCALA
	AVV. D.L. n. di

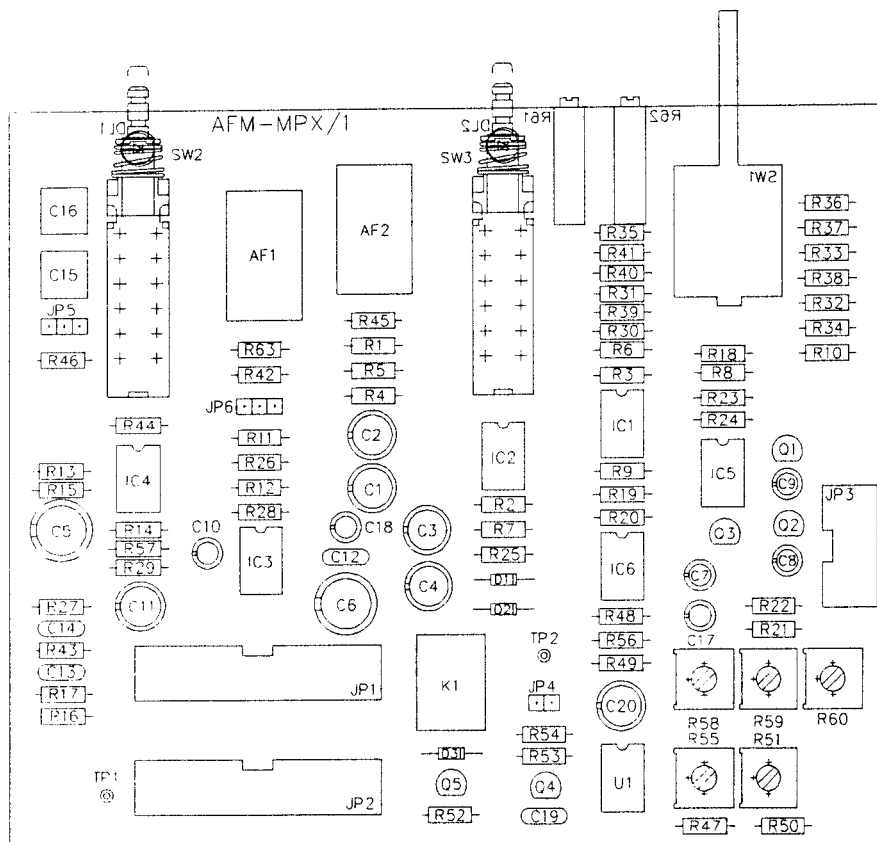
MONO/MPX CARD

- A) Circuit Diagram
- B) Bill of Materials
- C) Component Layout



Mono/MPX Card			Bill Of Materials		Page 1
Item	Quantity	Reference	Part	Description	Part Order Code
1	1	R53	47 1%	RESISTOR 1/4W 1%	RSM1/4FH0047
2	1	R16	100	RESISTOR 1/4W 5%	RSC1/4JH0100
3	1	R46	750 1%	RESISTOR 1/4W 1%	RSM1/4FH0750
4	1	R63	1K2 1%	RESISTOR 1/4W 1%	RSM1/4FK01,2
5	2	R30,R36	1K78 1%	RESISTOR 1/4W 1%	RSM1/4FK1,78
6	4	R6,R18, R37,R39	2K49 1%	RESISTOR 1/4W 1%	RSM1/4FK2,49
7	1	R44	2K80 1%	RESISTOR 1/4W 1%	RSM1/4FK2,80
8	1	R45	4K64 1%	RESISTOR 1/4W 1%	RSM1/4FK4,64
9	8	R4,R5,R9, R14,R25, R31,R33,R42	5K11 1%	RESISTOR 1/4W 1%	RSM1/4FK5,11
10	1	R26	5K90 1%	RESISTOR 1/4W 1%	RSM1/4FK5,90
11	2	R38,R40	7K15 1%	RESISTOR 1/4W 1%	RSM1/4FK7,15
12	1	R12	7K50 1%	RESISTOR 1/4W 1%	RSM1/4FK7,50
13	14	R15,R17, R20,R22, R24,R28, R29,R32, R41,R49, R52,R54, R56,R57	10K 1%	RESISTOR 1/4W 1%	RSM1/4FK0010
14	6	R2,R3,R7, R8,R34,R35	14K7 1%	RESISTOR 1/4W 1%	RSM1/4FK14,7
15	1	R13	21K5 1%	RESISTOR 1/4W 1%	RSM1/4FK21,5
16	2	R27,R43	22K 1%	RESISTOR 1/4W 1%	RSM1/4FK0022
17	1	R11	33K 1%	RESISTOR 1/4W 1%	RSM1/4FK0033
18	1	R48	56K 1%	RESISTOR 1/4W 1%	RSM1/4FK0056
19	1	R47	220K 1%	RESISTOR 1/4W 1%	RSM1/4FK0220
20	1	R50	330K	RESISTOR 1/4W 5%	RSC1/4JK0330
21	3	R19,R21, R23	470K	RESISTOR 1/4W 5%	RSC1/4JK0470
22	2	R1,R10	1M	RESISTOR 1/4W 5%	RSC1/4JM0001
23	3	R58,R59, R60	TC50K	TRIMM.REG.VERT.CERMET	RVTCERVK0050

Mono/MPX Card			Bill Of Materials		Page 2
Item	Quantity	Reference	Part	Description	Part Order Code
24	2	R51,R55	TC100K	TRIMM.REG.VERT.CERMET	RVTCERVK0100
25	2	R61,R62	TM20K	TRIMM.MULT.REG.VERT.	RVTMULVK0020
26	1	C15	2n2P 1%	POLIELSTER CAPACITOR	CPE222BF63
27	1	C16	3n3P 1%	POLIELSTER CAPACITOR 1%	CPE332BF101
28	4	C12,C13, C14,C19	0.1uF	CERAMIC CAPACITOR	CKM104BK600P
29	3	C7,C8,C9	2.2uF	ELECTROLYTIC CAPACITOR	CEA225AM630
30	3	C10,C11, C18	10uF	ELECTROLYTIC CAPACITOR	CEA106AM350
31	1	C17	47uF	ELECTROLYTIC CAPACITOR	CEA476BM630
32	4	C1,C3, C4,C20	100uF	ELECTROLYTIC CAPACITOR	CEA107BM350
33	1	C6	220uF	ELECTROLYTIC CAPACITOR	CEA227BM350
34	2	C2,C5	470uF	ELECTROLYTIC CAPACITOR	CEA477BM350
35	2	AF1,AF2	LPF19K	LOW-PASS FILTER 19KHZ	FLP19KHZ
36	2	TP1,TP2	1 P STRIP	STRIP M 1 PIN	CNTSTRIPMCS
37	1	JP4	2 P STRIP	STRIP M P 2.54 2 PIN	CNTSTRIPMCS
38	2	JP5,JP6	3 P STRIP	STRIP M P 2.54 3 PIN	CNTSTRIPMCS
39	1	JP3	10 P CONN.	CONN. M 2*5 P 2.54	CNTMCSFC10P
40	2	JP1,JP2	M26 FLAT CS	CONN. MXFLAT CS 26PIN	
41	1	K1	RLY 1V 12V	RELAY 1 VIA 12V	RLD112
42	1	SW1	SW2V6P	COMMUT. 2 VIE 6 POS F	COMR2V6PCS
43	3	D1,D2,D3	1N4148	SILICON DIODE	DIS1N4148
44	1	Q5	BC547	NPN TRANSISTOR	TRNBC547
45	4	Q1,Q2, Q3,Q4	BC557	PNP TRANSISTOR	TRNBC557
46	2	IC5,IC6	LM393	DOUBLE COMPARATOR	CILLM393
47	4	IC1,IC2, IC3,IC4	LF353	DOUBLE OP. AMP.	CILLF353
48	1	U1	NE555	TIMER	CIL555
49	2	SW2,D4	N.C.	NOT CONNECTED	



DENOMINAZIONE
 MONO/MPX Component Layout / Piano di Montaggio
 DISPOSITIVO
 TEX100 (F.M. Exciter)

SEMILAVORATO

MATERIALE

TRATTAMENTO

DISEGNATO

D'Alessio D. li

SCALA

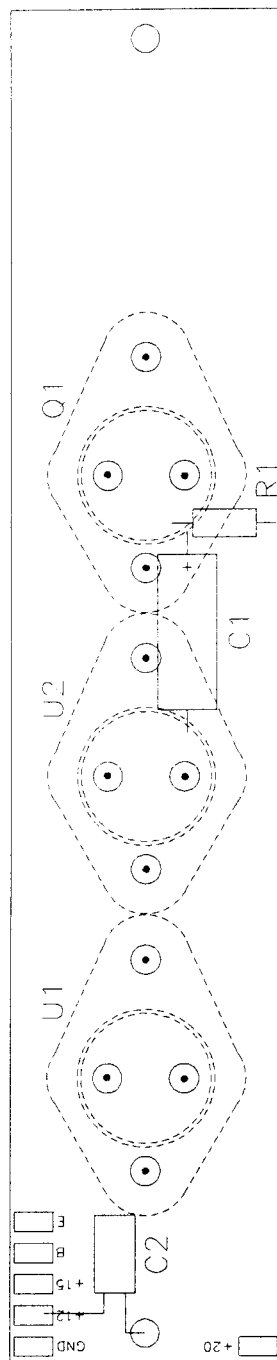
DISEGNO

TAVOLA n 1 di 1

MAIN POWER SUPPLY

- A) Circuit Diagram
- B) Bill of Materials
- C) Supply Layout

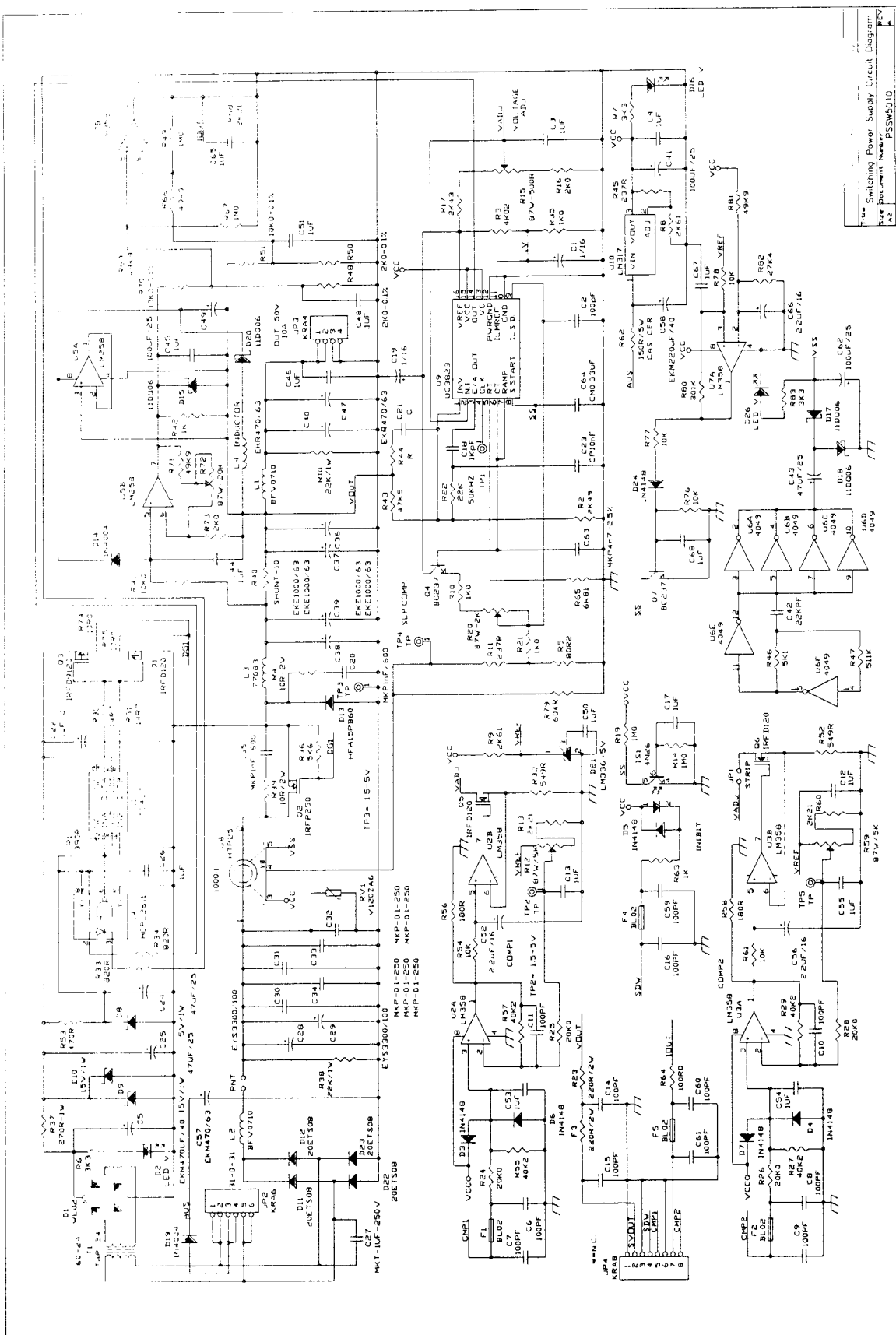
Main Power Supply Card			Bill Of Materials		Page 1
Item	Quantity	Reference	Part	Description	Part Order Code
1	1	R1	10K 1%	RESISTOR 1/4W 1%	RSM1/4FK0010
2	1	C2	22 μ F	ELECTROLYTIC CAPACITOR	CEA226BM350
3	1	C1	470 μ F	ELECTROLYTIC CAPACITOR	CEA477BM350
4	1	U1	7812K	POS. STABILIZER 1.5A	CIL7812K
5	1	U2	7815K	POS. STABILIZER 1.5A	CIL7815K
6	1	Q1	MJ3001	POWER TRANSISTOR	TRNMJ3001



DENOMINAZIONE Main Power Supply Component Layout / Piano di Montaggio		DISEGNATO D'Alessio D. U.		DISEGNO	
SEMILAVORATO		SCALA		TAVOLA n. 01	
MATERIALE		TRATTAMENTO		DISGNO	

SWITCHING POWER SUPPLY (MOD. PSW5010)

- A) Circuit Diagram
- B) Bill of Materials
- C) Supply Layout

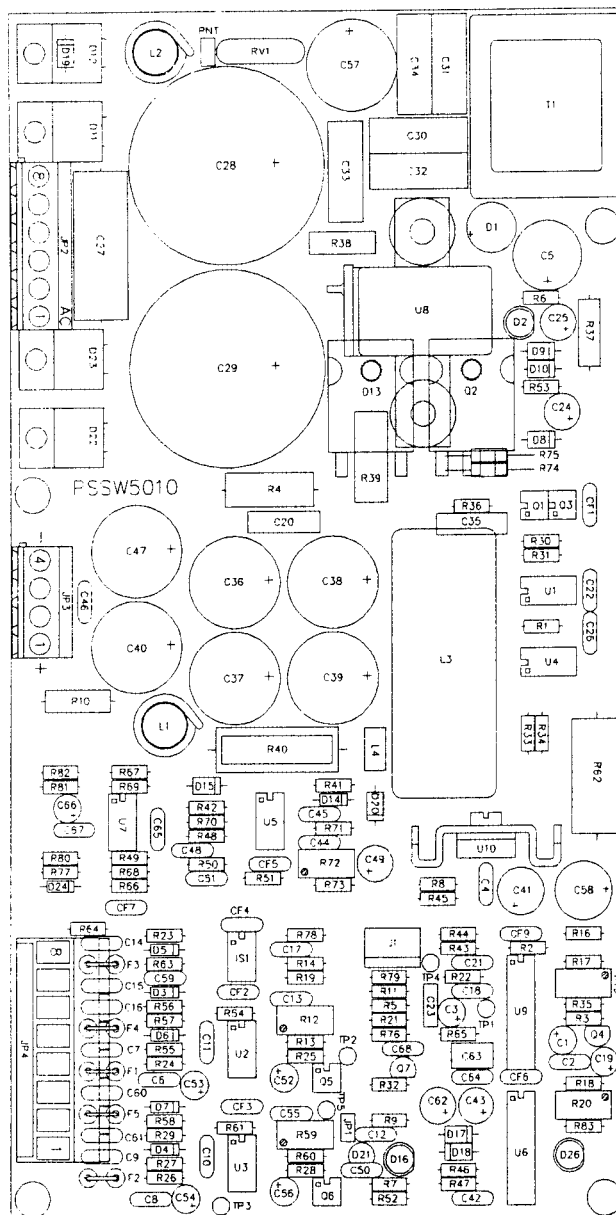


Item	Quantity	Reference	Part
1	2	C1,C19	1/16
2	13	C2,C6,C7,C8,C9,C10,C11,C14,C15,C16,C59,C60,C61	100pF
3	16	C3,C4,C12,C13,C17,C26,C44,C45,C46,C48,C50,C51,C55,C65,C67,C68	.1μF
4	1	C5	EKM470μF/40
5	1	C18	1KpF
6	2	C20,C35	MKP1nF/600
7	1	C21	C
8	1	C22	.1μF C
9	1	C23	CP10nF
10	3	C24,C25,C43	47μF/25
11	1	C27	MKT-1μF-250V
12	2	C28,C29	EYS3300/100
13	5	C30,C31,C32,C33,C34	MKP-0.1-250
14	4	C36,C37,C38,C39	EKE1000/63
15	2	C40,C47	EKR470/63
16	3	C41,C49,C62	100μF/25
17	1	C42	22KpF
18	3	C52,C56,C66	2.2μF/16
19	2	C53,C54	1μF
20	1	C57	EKM470/63
21	1	C58	EKM220μF/40
22	1	C63	MKP4n7-2.5%
23	1	C64	CM0.33μF
24	1	D1	WL02
25	3	D2,D16,D26	LED V
26	6	D3,D4,D5,D6,D7,D24	1N4148
27	1	D8	5V/1W
28	2	D9,D10	15V/1W

Item	Quantity	Reference	Part
29	4	D11,D12,D22,D23	20ETS08
30	1	D13	HFA15PB60
31	2	D14,D19	1N4004
32	4	D15,D17,D18,D20	11DQ06
33	1	D21	LM336-5V
34	4	F1,F2,F4,F5	BL02
35	2	F3,R23	220R/2W
36	1	IS1	4N26
37	1	JP1	STRIP
38	1	JP2	KRA6
39	1	JP3	KRA4
40	1	JP4	KRA8
41	2	L1,L2	BFV0710
42	1	L3	77083
43	1	L4	INDUCTOR
44	1	PNT	
45	3	Q1,Q5,Q6	IRFD120
46	1	Q2	IRFP250
47	1	Q3	IRFD9120
48	2	Q4,Q7	BC237
49	1	RV1	V120ZA6
50	1	R1	390R
51	1	R2	2K49
52	1	R3	4K02
53	2	R4,R39	10R/2W
54	1	R5	80R2
55	3	R6,R7,R83	3K3
56	2	R8,R9	2K61
57	2	R10,R38	22K/1W

Item	Quantity	Reference	Part
58	2	R11,R45	237R
59	2	R12,R59	87W/5K
60	3	R13,R60,R68	2K21
61	4	R14,R19,R49,R67	1M0
62	1	R15	87W-500R
63	2	R16,R73	2K0
64	1	R17	2K43
65	3	R18,R21,R35	1K0
66	1	R20	87W-2K
67	1	R22	22K
68	4	R24,R25,R26,R28	20K0
69	4	R27,R29,R55,R57	40K2
70	2	R30,R31	14R7
71	2	R32,R52	549R
72	2	R33,R34	820R
73	1	R36	5K6
74	1	R37	270R-1W
75	1	R40	SHUNT-10
76	1	R41	10K0
77	2	R42,R63	1K
78	1	R43	47K5
79	1	R44	R
80	1	R46	5K1
81	1	R47	511K
82	2	R48,R50	2K0-0.1%
83	2	R51,R70	10K0-0.1%
84	1	R53	470R
85	5	R54,R61,R76,R77,R78	10K
86	2	R56,R58	180R

Item	Quantity	Reference	Part
87	1	R62	150R/5W
88	1	R64	100R0
89	1	R65	6K81
90	4	R66,R69,R71,R81	49K9
91	1	R72	87W-20K
92	2	R74,R75	10R0
93	1	R79	604R
94	1	R80	301K
95	1	R82	27K4
96	5	TP1,TP2,TP3,TP4,TP5	TP
97	1	T1	TAP/24
98	1	U1	TC427
99	3	U2,U3,U7	LM358
100	1	U4	HCPL2611
101	1	U5	LM258
102	1	U6	4049
103	1	U8	HTP25
104	1	U9	UC3823
105	1	U10	LM317



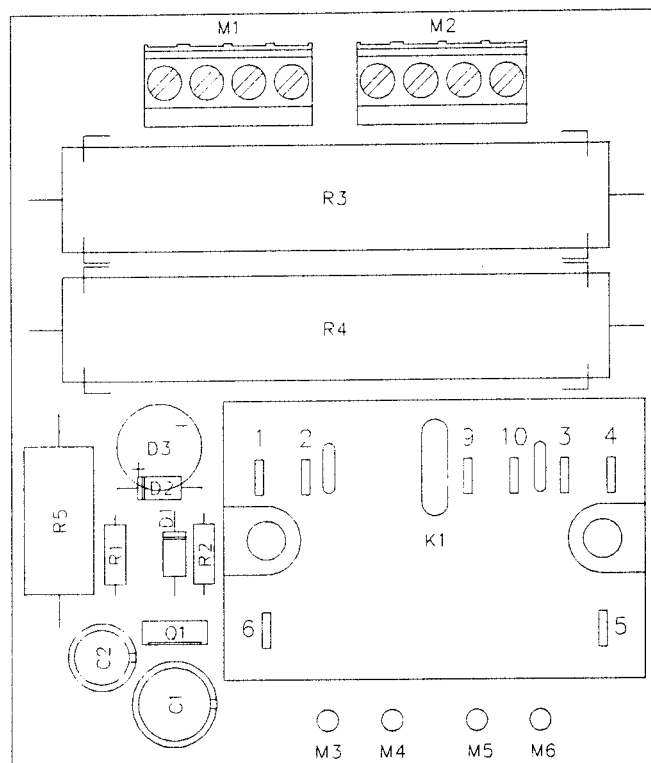
R12 -> COMP1 ADJ
R15 -> Voltage ADJ
R20 -> Current Limitation ADJ
R59 -> COMP2 ADJ
R72 -> FS Reading Current ADJ

DENOMINAZIONE		
® Power Supply PWSW5010 Component Layout / Piano di Montaggio		
DISPOSITIVO		
SEMILAVORATO	DISEGNATO	DISEGNO
MATERIALE	D'Alessio D.ii	
TRATTAMENTO	SCALA	TAVOLA n di
	1:1	

SOFT-START CARD

- A) Circuit Diagram
- B) Bill of Materials
- C) Supply Layout

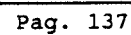
Soft-Start Card			Bill of Materials/Lista Componenti		Pag. 1
Item	Quantity	Reference	Part	Description	Part Order Code
1	2	R3,R4	10/20W	RESISTOR 20W 10%	RAF020KH0010
2	1	R5	120\$	RESISTOR 5W	RSC005JH0120
3	2	R1,R2	10K 1%	RESISTOR 1/4W 1%	RSM1/4FK0010
4	1	C2	47 μ F	ELECTROLYTIC CAPACITOR	CEA476BM630
5	1	C1	220 μ F	ELECTROLYTIC CAPACITOR	CEA227BM350
6	2	M1,M2	MORS. CS 4	MORSETTIERA CS 4 CONT.	MORSKB04PPO
7	1	K1	JH2A	RELAY MATHSUSH. 2CA1CC	RLDJH2AB24
8	1	D2	1N4001	SILICON DIODE 50V	DIS1N4001
9	1	D1	1N4005	SILICON DIODE 600V	DIS1N4005
10	1	D3	WL04	DIODE BRIDGE 1.5A	PNRWL04
11	1	Q1	BD681	NPN DARLINGTON	TRNBD681

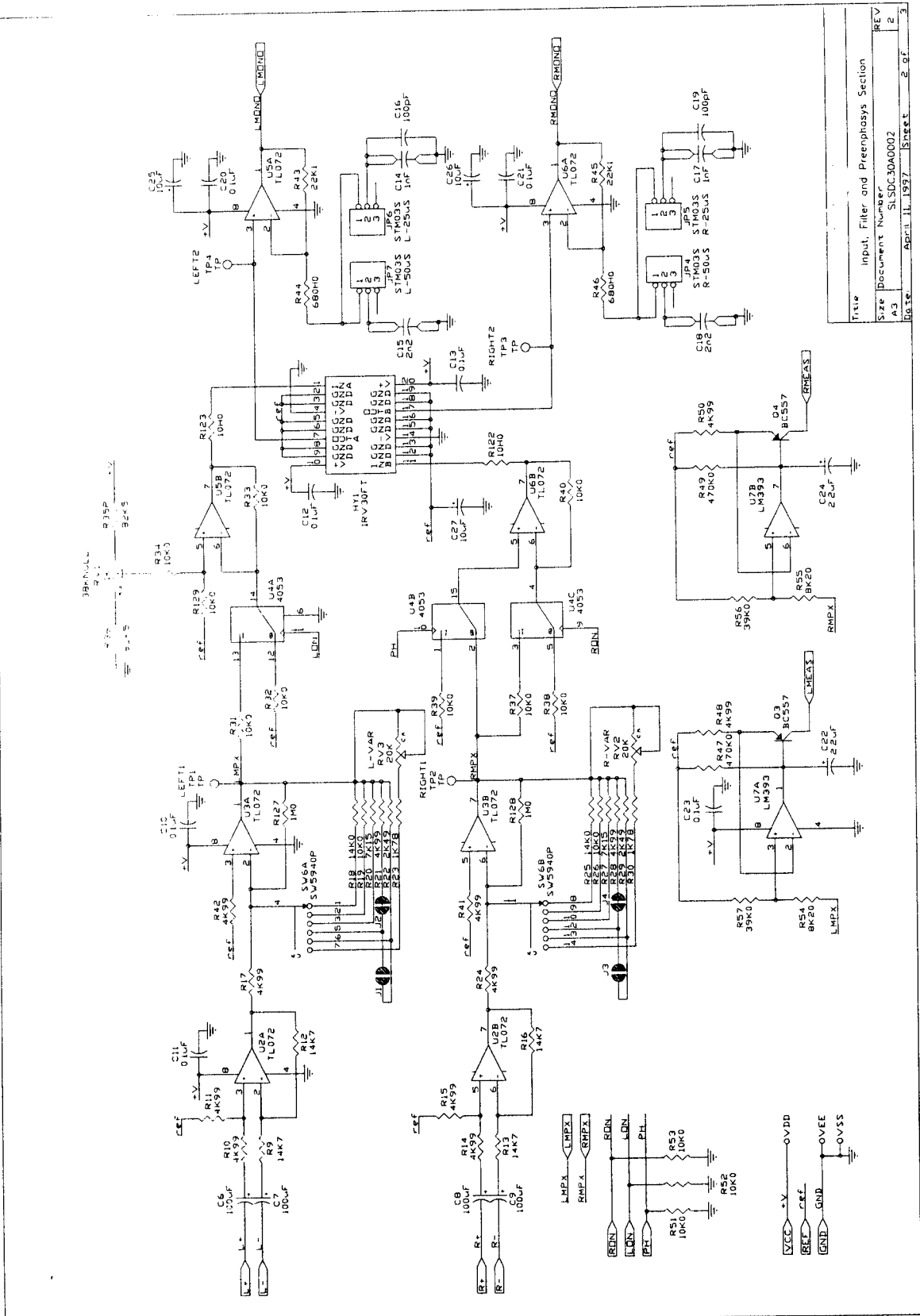


	DENOMINAZIONE		
	Soft-Start Card Component Layout / Piano di Montaggio		
	DISPOSITIVO		
SEMILAVORATO	DISEGNATO	li 01/08/95	DISEGNO
MATERIALE	SCALA		
TRATTAMENTO	TAVOLA n di		

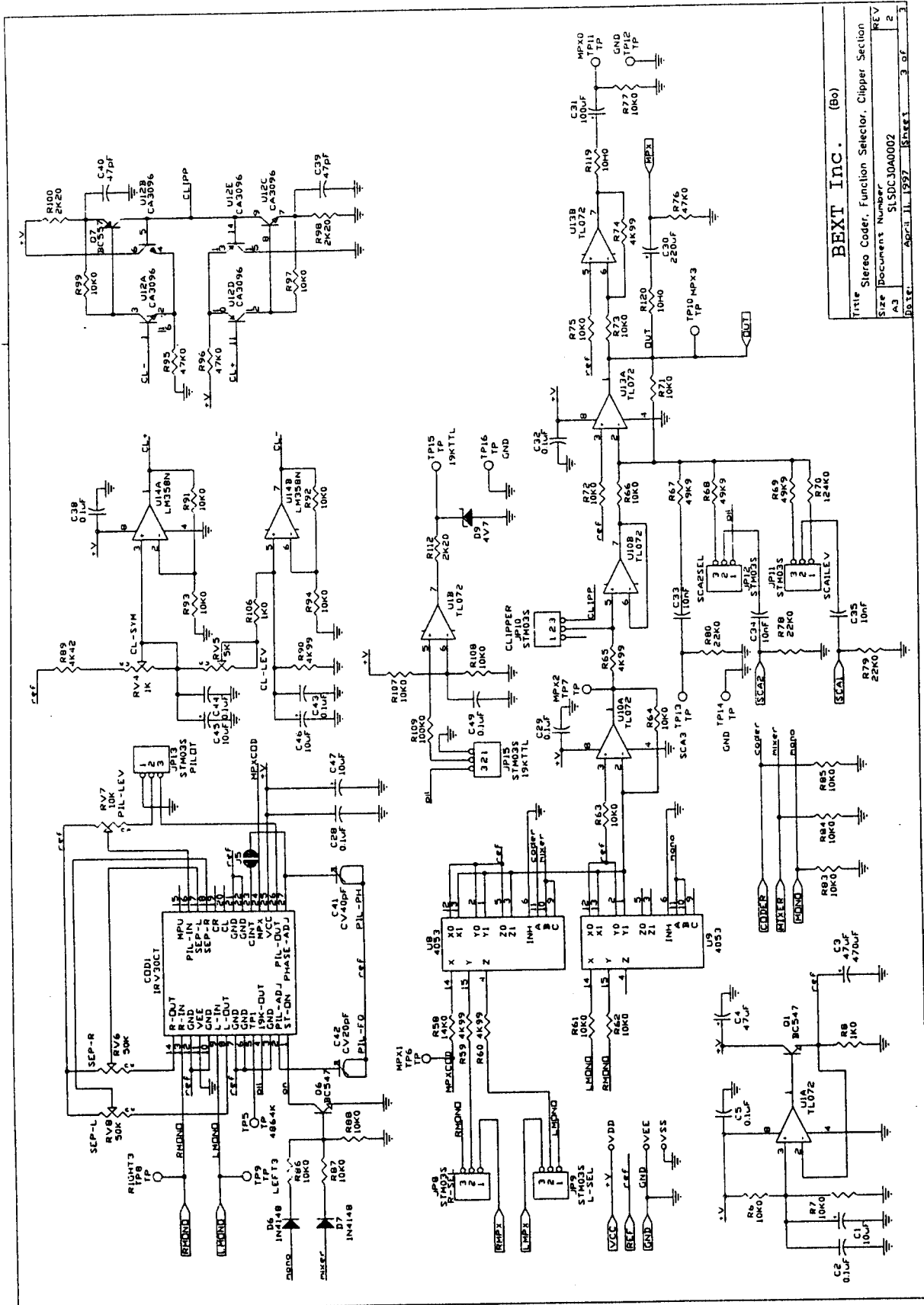
STEREO CODER CARD

- A) Stereo Coder Circuit Diagram
- B) Bill of Materials
- C) Stereo Coder Layout





Title	Input Filter and Preamplifier Section
Size	Document Number
A3	SLD030A0002
Date	April 11, 1997
Page	2 of 2



Stereo Coder			Bill Of Materials	Page 1
Item	Reference	Part	Description	Part Order Code
1	CS1	CS	Circuito stampato	CSSDC30A0002
2	R1	1K8	Res. 1/4 W 1%	RSM1/4FK01,8
3	R5	1K8	Res. 1/4 W 1%	RSM1/4FK01,8
4	R117	604H0	Res. 1/4 W 1%	RSM1/4FH0604
5	R118	604H0	Res. 1/4 W 1%	RSM1/4FH0604
6	D1	LED-G5	Led Verde dia. 5mm	LEDVE05
7	D5	LED-G5	Led Verde dia. 5mm	LEDVE05
8	D8	1N4148	Diodo silicio	DIS1N4148
9	C48	47uF	Cond. el. ver. 16V p. 2.5mm	CEA476AM160
10	R104	2M20	Res. 1/4 W 1%	RSM1/4FM02,2
11	R103	56K0	Res. 1/4 W 1%	RSM1/4FK0056
12	R114	1K0	Res. 1/4 W 1%	RSM1/4FK0001
13	R125	10K0	Res. 1/4 W 1%	RSM1/4FK0010
14	R126	10K0	Res. 1/4 W 1%	RSM1/4FK0010
15	JP17	STM03S	Strip M 2.54 3 pin.	CNTSTM03S
16	JP16	STM03S	Strip M 2.54 3 pin.	CNTSTM03S
17	JP2	CN26PD	Conn. M cs 2x2.54mm a 26 pin.	CNTMCSFC26P
18	JP3	CN10PD	Conn. M cs 2x2.54mm a 10 pin.	CNTMCSFC10P
19	JP1	CN26PD	Conn. M cs 2x2.54mm a 26 pin.	CNTMCSFC26P
20	C52	0.1uF	Cond. ceramico p. 5mm P100	CKM104BK600P
21	SW1	SWWP4_2	Commutatore	SWWP4_2
22	SW5	SWWP4_2	Commutatore	SWWP4_2
23	C53	100uF	Cond. el. ver. 25V p. 2.5mm	CEA107AM250
24	SW2	NC	Non connesso	
25	R2	NC	Non connesso	
26	D2	NC	Non connesso	
27	D3	NC	Non connesso	
28	R3	NC	Non connesso	
29	SW3	NC	Non connesso	

Stereo Coder			Bill Of Materials	Page 2
Item	Reference	Part	Description	Part Order Code
30	SW4	NC	Non connesso	
31	R4	NC	Non connesso	
32	D4	NC	Non connesso	
33	D10	1N4148	Diodo silicio	DIS1N4148
34	D11	1N4148	Diodo silicio	DIS1N4148
35	D12	1N4148	Diodo silicio	DIS1N4148
36	D13	1N4148	Diodo silicio	DIS1N4148
37	C37	0.1uF	Cond. ceramico p. 5mm P100	CKM104BK600P
38	R81	470K0	Res. 1/4 W 1%	RSM1/4FK0470
39	R82	10K0	Res. 1/4 W 1%	RSM1/4FK0010
40	R116	39K0	Res. 1/4 W 1%	RSM1/4FK0039
41	R115	8K20	Res. 1/4 W 1%	RSM1/4FK08,2
42	R105	10K0	Res. 1/4 W 1%	RSM1/4FK0010
43	U11	LM393	CI lineare	CILLM393
44	ZOC11	ZOC8	Zoccolo int. 8 pin	ZIN08
45	R102	100K0	Res. 1/4 W 1%	RSM1/4FK0100
46	R101	3K30	Res. 1/4 W 1%	RSM1/4FK03,3
47	C36	2.2uF	Cond. el. ver. 16V p. 2.5mm	CEA225AM160
48	R113	10K0	Res. 1/4 W 1%	RSM1/4FK0010
49	Q5P	BC557	Tr. in TO 92	TRNBC557
50	U2	TL072	CI lineare	CILTL072
51	ZOC2	ZOC8	Zoccolo int. 8 pin	ZIN08
52	U5	TL072	CI lineare	CILTL072
53	ZOC5	ZOC8	Zoccolo int. 8 pin	ZIN08
54	U6	TL072	CI lineare	CILTL072
55	ZOC6	ZOC8	Zoccolo int. 8 pin	ZIN08
56	U3	TL072	CI lineare	CILTL072
57	ZOC3	ZOC8	Zoccolo int. 8 pin	ZIN08
58	U7	LM393	CI lineare	CILLM393

Stereo Coder			Bill Of Materials	Page 3
Item	Reference	Part	Description	Part Order Code
59	ZOC7	ZOC8	Zoccolo int. 8 pin	ZIN08
60	C6	100uF	Cond. el. ver. 25V p. 2.5mm	CEA107AM250
61	C7	100uF	Cond. el. ver. 25V p. 2.5mm	CEA107AM250
62	R9	14K7	Res. 1/4 W 1%	RSM1/4FK14,7
63	R10	4K99	Res. 1/4 W 1%	RSM1/4FK4,99
64	R11	4K99	Res. 1/4 W 1%	RSM1/4FK4,99
65	R12	14K7	Res. 1/4 W 1%	RSM1/4FK14,7
66	C11	0.1uF	Cond. ceramico p. 5mm P100	CKM104BK600P
67	C10	0.1uF	Cond. ceramico p. 5mm P100	CKM104BK600P
68	R31	10K0	Res. 1/4 W 1%	RSM1/4FK0010
69	R33	10K0	Res. 1/4 W 1%	RSM1/4FK0010
70	C27	10uF	Cond. el. ver. 35V p. 2.5mm	CEA106AM350
71	C13	0.1uF	Cond. ceramico p. 5mm P100	CKM104BK600P
72	R44	680H0	Res. 1/4 W 1%	RSM1/4FH0680
73	R43	22K1	Res. 1/4 W 1%	RSM1/4FK22,1
74	C14	1nF	Cond. pol. 1% p. 7mm	CPS102CF630
75	C16	100pF	Cond. ceramico p. 5mm NPO	CKM101BK600C
76	C20	0.1uF	Cond. ceramico p. 5mm P100	CKM104BK600P
77	C25	10uF	Cond. el. ver. 35V p. 2.5mm	CEA106AM350
78	C26	10uF	Cond. el. ver. 35V p. 2.5mm	CEA106AM350
79	C21	0.1uF	Cond. ceramico p. 5mm P100	CKM104BK600P
80	R45	22K1	Res. 1/4 W 1%	RSM1/4FK22,1
81	R46	680H0	Res. 1/4 W 1%	RSM1/4FH0680
82	C18	2.2nF	Cond. pol. 1% p. 7mm	CPS222CF630
83	C15	2.2nF	Cond. pol. 1% p. 7mm	CPS222CF630
84	C17	1nF	Cond. pol. 1% p. 7mm	CPS102CF630
85	C19	100pF	Cond. ceramico p. 5mm NPO	CKM101BK600C
86	R40	10K0	Res. 1/4 W 1%	RSM1/4FK0010
87	R37	10K0	Res. 1/4 W 1%	RSM1/4FK0010

Stereo Coder			Bill Of Materials	Page 4
Item	Reference	Part	Description	Part Order Code
88	R39	10K0	Res. 1/4 W 1%	RSM1/4FK0010
89	R14	4K99	Res. 1/4 W 1%	RSM1/4FK4,99
90	R15	4K99	Res. 1/4 W 1%	RSM1/4FK4,99
91	R13	14K7	Res. 1/4 W 1%	RSM1/4FK14,7
92	R16	14K7	Res. 1/4 W 1%	RSM1/4FK14,7
93	C9	100uF	Cond. el. ver. 25V p. 2.5mm	CEA107AM250
94	C8	100uF	Cond. el. ver. 25V p. 2.5mm	CEA107AM250
95	R51	10K0	Res. 1/4 W 1%	RSM1/4FK0010
96	R52	10K0	Res. 1/4 W 1%	RSM1/4FK0010
97	R53	10K0	Res. 1/4 W 1%	RSM1/4FK0010
98	R57	39K0	Res. 1/4 W 1%	RSM1/4FK0039
99	R54	8K20	Res. 1/4 W 1%	RSM1/4FK08,2
100	C22	2.2uF	Cond. el. ver. 16V p. 2.5mm	CEA225AM160
101	R47	470K0	Res. 1/4 W 1%	RSM1/4FK0470
102	C23	0.1uF	Cond. ceramico p. 5mm P100	CKM104BK600P
103	Q3	BC557	Tr. in TO 92	TRNBC557
104	R55	8K20	Res. 1/4 W 1%	RSM1/4FK08,2
105	R56	39K0	Res. 1/4 W 1%	RSM1/4FK0039
106	R49	470K0	Res. 1/4 W 1%	RSM1/4FK0470
107	Q4	BC557	Tr. in TO 92	TRNBC557
108	C24	2.2uF	Cond. el. ver. 16V p. 2.5mm	CEA225AM160
109	R19	10K0	Res. 1/4 W 1%	RSM1/4FK0010
110	R20	7K15	Res. 1/4 W 1%	RSM1/4FK7,15
111	R22	2K49	Res. 1/4 W 1%	RSM1/4FK2,49
112	R23	1K78	Res. 1/4 W 1%	RSM1/4FK1,78
113	R26	10K0	Res. 1/4 W 1%	RSM1/4FK0010
114	R27	7K15	Res. 1/4 W 1%	RSM1/4FK7,15
115	R29	2K49	Res. 1/4 W 1%	RSM1/4FK2,49
116	R30	1K78	Res. 1/4 W 1%	RSM1/4FK1,78

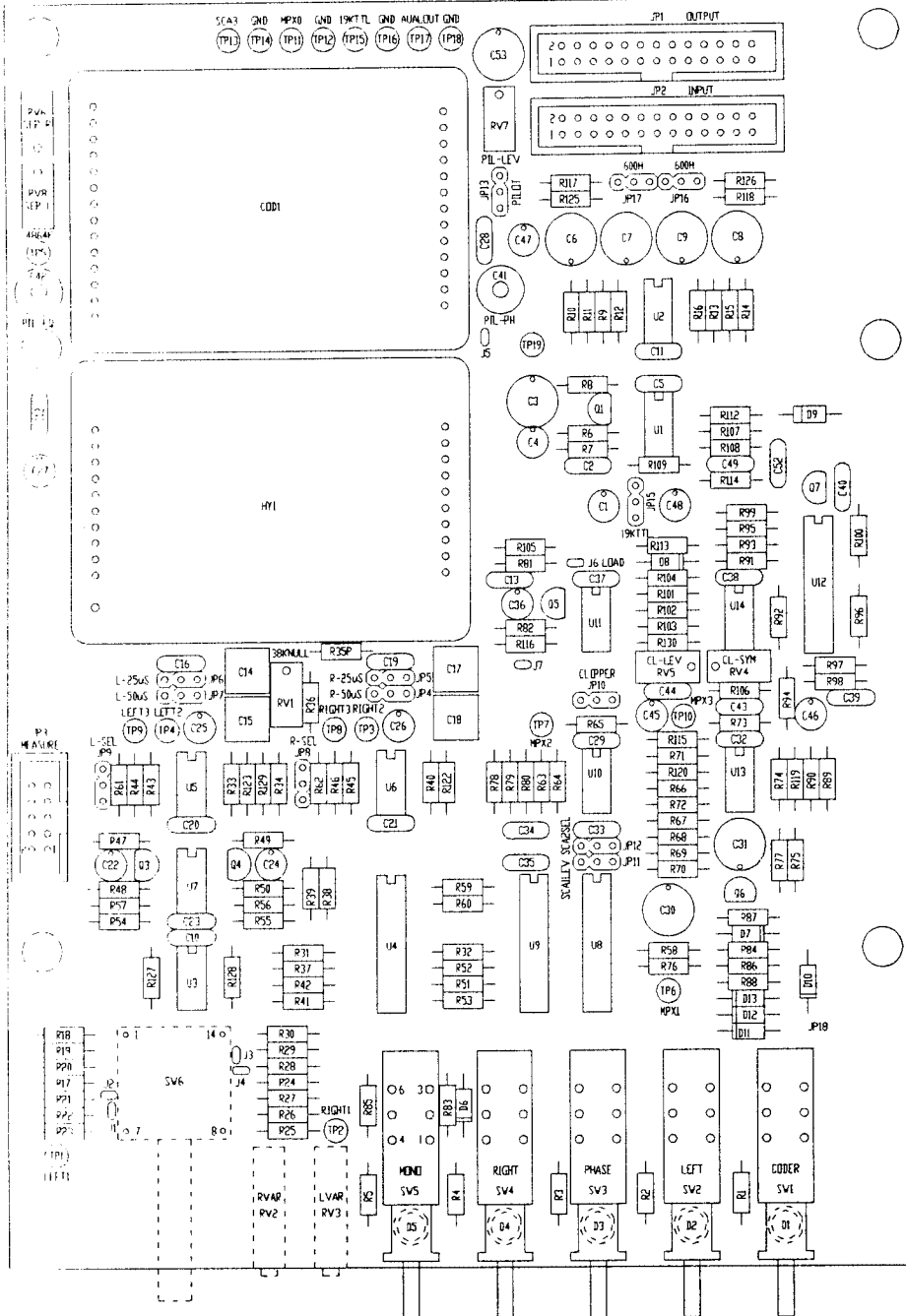
Stereo Coder			Bill Of Materials	Page 5
Item	Reference	Part	Description	Part Order Code
117	C12	0.1uF	Cond. ceramico p. 5mm P100	CKM104BK600P
118	RV1	1K	Trim. mult. 3296W rg V	RVTMTJVK0001
119	JP4	STM03S	Strip M 2.54 3 pin.	CNTSTM03S
120	JP5	STM03S	Strip M 2.54 3 pin.	CNTSTM03S
121	JP7	STM03S	Strip M 2.54 3 pin.	CNTSTM03S
122	R127	1M0	Res. 1/4 W 1%	RSM1/4FM0001
123	R128	1M0	Res. 1/4 W 1%	RSM1/4FM0001
124	SW6	SW5940P	Commutatore	SW5940P
125	U4	4053	CI digitale	CID4053
126	ZOC4	ZOC16	Zoccolo int. 16 pin	ZIN16
127	R38	10K0	Res. 1/4 W 1%	RSM1/4FK0010
128	R32	10K0	Res. 1/4 W 1%	RSM1/4FK0010
129	R17	4K99	Res. 1/4 W 1%	RSM1/4FK4,99
130	R24	4K99	Res. 1/4 W 1%	RSM1/4FK4,99
131	R41	4K99	Res. 1/4 W 1%	RSM1/4FK4,99
132	R42	4K99	Res. 1/4 W 1%	RSM1/4FK4,99
133	R21	4K99	Res. 1/4 W 1%	RSM1/4FK4,99
134	R18	14K0	Res. 1/4 W 1%	RSM1/4FK0014
135	R25	14K0	Res. 1/4 W 1%	RSM1/4FK0014
136	R28	4K99	Res. 1/4 W 1%	RSM1/4FK4,99
137	R48	4K99	Res. 1/4 W 1%	RSM1/4FK4,99
138	R50	4K99	Res. 1/4 W 1%	RSM1/4FK4,99
139	R123	10H0	Res. 1/4 W 1%	RSM1/4FH0010
140	R122	10H0	Res. 1/4 W 1%	RSM1/4FH0010
141	JP6	STM03S	Strip M 2.54 3 pin.	CNTSTM03S
142	RV2	20K	Trim. mult. rg H	RVTMTDHK0020
143	RV3	20K	Trim. mult. rg H	RVTMTDHK0020
144	R34	10K0	Res. 1/4 W 1%	RSM1/4FK0010
145	R129	10K0	Res. 1/4 W 1%	RSM1/4FK0010

Stereo Coder			Bill Of Materials	Page 6
Item	Reference	Part	Description	Part Order Code
146	R36	82K5	Res. 1/4 W 1%	RSM1/4FK82,5
147	R35P	82K5	Res. 1/4 W 1%	RSM1/4FK82,5
148	HY1	IRV30FT	Filtro Coder IRV30FT	MIBIRV30FT
149	U8	4053	CI digitale	CID4053
150	ZOC8	ZOC16	Zoccolo int. 16 pin	ZIN16
151	U9	4053	CI digitale	CID4053
152	ZOC9	ZOC16	Zoccolo int. 16 pin	ZIN16
153	C30	220uF	Cond. el. ver. 16V p. 2.5mm	CEA227AM160
154	U12	CA3096	CI lineare	CILCA3096
155	ZOC12	ZOC16	Zoccolo int. 16 pin	ZIN16
156	U10	TL072	CI lineare	CILTL072
157	ZOC10	ZOC8	Zoccolo int. 8 pin	ZIN08
158	U13	TL072	CI lineare	CILTL072
159	ZOC13	ZOC8	Zoccolo int. 8 pin	ZIN08
160	U14	LM358N	CI lineare	CILLM358N
161	ZOC14	ZOC8	Zoccolo int. 8 pin	ZIN08
162	C47	10uF	Cond. el. ver. 35V p. 2.5mm	CEA106AM350
163	C28	0.1uF	Cond. ceramico p. 5mm P100	CKM104BK600P
164	Q6	BC547	Tr. in TO 92	TRNBC547
165	R88	10K0	Res. 1/4 W 1%	RSM1/4FK0010
166	R87	10K0	Res. 1/4 W 1%	RSM1/4FK0010
167	R86	10K0	Res. 1/4 W 1%	RSM1/4FK0010
168	D6	1N4148	Diodo silicio	DIS1N4148
169	D7	1N4148	Diodo silicio	DIS1N4148
170	R59	4K99	Res. 1/4 W 1%	RSM1/4FK4,99
171	R60	4K99	Res. 1/4 W 1%	RSM1/4FK4,99
172	R61	10K0	Res. 1/4 W 1%	RSM1/4FK0010
173	R62	10K0	Res. 1/4 W 1%	RSM1/4FK0010
174	R63	10K0	Res. 1/4 W 1%	RSM1/4FK0010

Stereo Coder			Bill Of Materials	Page 7
Item	Reference	Part	Description	Part Order Code
175	R64	10K0	Res. 1/4 W 1%	RSM1/4FK0010
176	C29	0.1uF	Cond. ceramico p. 5mm P100	CKM104BK600P
177	R65	4K99	Res. 1/4 W 1%	RSM1/4FK4,99
178	R72	10K0	Res. 1/4 W 1%	RSM1/4FK0010
179	R66	10K0	Res. 1/4 W 1%	RSM1/4FK0010
180	C32	0.1uF	Cond. ceramico p. 5mm P100	CKM104BK600P
181	R71	10K0	Res. 1/4 W 1%	RSM1/4FK0010
182	R73	10K0	Res. 1/4 W 1%	RSM1/4FK0010
183	R75	10K0	Res. 1/4 W 1%	RSM1/4FK0010
184	R74	4K99	Res. 1/4 W 1%	RSM1/4FK4,99
185	R119	10H0	Res. 1/4 W 1%	RSM1/4FH0010
186	C31	100uF	Cond. el. ver. 25V p. 2.5mm	CEA107AM250
187	R77	10K0	Res. 1/4 W 1%	RSM1/4FK0010
188	R120	10H0	Res. 1/4 W 1%	RSM1/4FH0010
189	R79	22K0	Res. 1/4 W 1%	RSM1/4FK0022
190	R78	22K0	Res. 1/4 W 1%	RSM1/4FK0022
191	R80	22K0	Res. 1/4 W 1%	RSM1/4FK0022
192	R67	49K9	Res. 1/4 W 1%	RSM1/4FK49,9
193	R68	49K9	Res. 1/4 W 1%	RSM1/4FK49,9
194	R69	49K9	Res. 1/4 W 1%	RSM1/4FK49,9
195	R70	124K0	Res. 1/4 W 1%	RSM1/4FK0124
196	R83	10K0	Res. 1/4 W 1%	RSM1/4FK0010
197	R84	10K0	Res. 1/4 W 1%	RSM1/4FK0010
198	R85	10K0	Res. 1/4 W 1%	RSM1/4FK0010
199	C39	47pF	Cond. ceramico p. 5mm NPO	CKM470BK600C
200	R98	2K20	Res. 1/4 W 1%	RSM1/4FK02,2
201	R97	10K0	Res. 1/4 W 1%	RSM1/4FK0010
202	R96	47K0	Res. 1/4 W 1%	RSM1/4FK0047
203	R95	47K0	Res. 1/4 W 1%	RSM1/4FK0047

Stereo Coder			Bill Of Materials	Page 8
Item	Reference	Part	Description	Part Order Code
204	Q7	BC557	Tr. in TO 92	TRNBC557
205	C40	47pF	Cond. ceramico p. 5mm NPO	CKM470BK600C
206	R100	2K20	Res. 1/4 W 1%	RSM1/4FK02,2
207	C38	0.1uF	Cond. ceramico p. 5mm P100	CKM104BK600P
208	R91	10K0	Res. 1/4 W 1%	RSM1/4FK0010
209	R93	10K0	Res. 1/4 W 1%	RSM1/4FK0010
210	R92	10K0	Res. 1/4 W 1%	RSM1/4FK0010
211	R94	10K0	Res. 1/4 W 1%	RSM1/4FK0010
212	R90	4K99	Res. 1/4 W 1%	RSM1/4FK4,99
213	C43	0.1uF	Cond. ceramico p. 5mm P100	CKM104BK600P
214	C46	10uF	Cond. el. ver. 35V p. 2.5mm	CEA106AM350
215	C45	10uF	Cond. el. ver. 35V p. 2.5mm	CEA106AM350
216	C44	0.1uF	Cond. ceramico p. 5mm P100	CKM104BK600P
217	R106	1K0	Res. 1/4 W 1%	RSM1/4FK0001
218	R89	4K42	Res. 1/4 W 1%	RSM1/4FK4,42
219	R109	100K0	Res. 1/4 W 1%	RSM1/4FK0100
220	C49	0.1uF	Cond. ceramico p. 5mm P100	CKM104BK600P
221	R108	10K0	Res. 1/4 W 1%	RSM1/4FK0010
222	D9	4V7	Diodo Zener 0.4 W	DIZ4V70W4
223	R76	47K0	Res. 1/4 W 1%	RSM1/4FK0047
224	JP13	STM03S	Strip M 2.54 3 pin.	CNTSTM03S
225	JP15	STM03S	Strip M 2.54 3 pin.	CNTSTM03S
226	JP10	STM03S	Strip M 2.54 3 pin.	CNTSTM03S
227	JP12	STM03S	Strip M 2.54 3 pin.	CNTSTM03S
228	JP11	STM03S	Strip M 2.54 3 pin.	CNTSTM03S
229	R99	10K0	Res. 1/4 W 1%	RSM1/4FK0010
230	R107	10K0	Res. 1/4 W 1%	RSM1/4FK0010
231	R112	2K20	Res. 1/4 W 1%	RSM1/4FK02,2
232	R6	10K0	Res. 1/4 W 1%	RSM1/4FK0010

Stereo Coder			Bill Of Materials	Page 9
Item	Reference	Part	Description	Part Order Code
233	R7	10K0	Res. 1/4 W 1%	RSM1/4FK0010
234	C1	10uF	Cond. el. ver. 35V p. 2.5mm	CEA106AM350
235	C2	0.1uF	Cond. ceramico p. 5mm P100	CKM104BK600P
236	C5	0.1uF	Cond. ceramico p. 5mm P100	CKM104BK600P
237	C4	47uF	Cond. el. ver. 16V p. 2.5mm	CEA476AM160
238	C3	47uF	Cond. el. ver. 16V p. 2.5mm	CEA476AM160
239	U1	TL072	CI lineare	CILT072
240	ZOC1	ZOC8	Zoccolo int. 8 pin	ZIN08
241	C33	10nF	Cond. ceramico p. 5mm P100	CKM103BK600P
242	C34	10nF	Cond. ceramico p. 5mm P100	CKM103BK600P
243	C35	10nF	Cond. ceramico p. 5mm P100	CKM103BK600P
244	JP9	STM03S	Strip M 2.54 3 pin.	CNTSTM03S
245	JP8	STM03S	Strip M 2.54 3 pin.	CNTSTM03S
246	RV8	50K	Trim. mult. 3296W rg V	RVTMTJVK0050
247	RV6	50K	Trim. mult. 3296W rg V	RVTMTJVK0050
248	RV7	10K	Trim. mult. 3296W rg V	RVTMTJVK0010
249	C41	40pF	Cond. cer. var. dia. 7mm	CVC400BK600
250	C42	20pF	Cond. cer. var. dia. 7mm	CVC200BK600
251	RV4	1K	Trim. mult. 3296W rg V	RVTMTJVK0001
252	RV5	5K	Trim. mult. 3296W rg V	RVTMTJVK0005
253	Q1	BC547	Tr. in TO 92	TRNBC547
254	R8	1K0	Res. 1/4 W 1%	RSM1/4FK0001
255	R58	14K0	Res. 1/4 W 1%	RSM1/4FK0014
256	COD1	IRV30CT	Coder Stereo IRV30CT	MIBIRV30CT

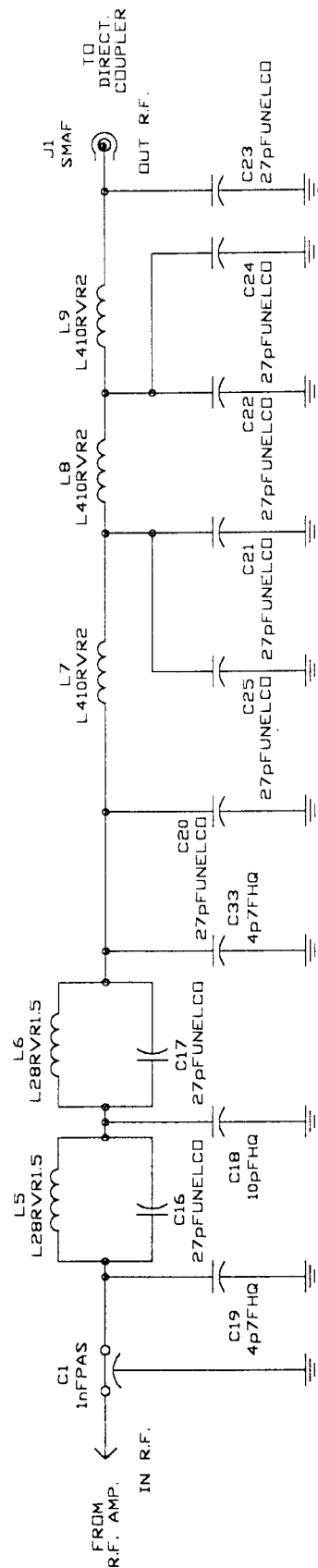


DENOMINAZIONE
Component Layout / Piano di Montaggio
DISPOSITIVO
SDC30A002 (Stereo Coder Card)

SEMILAVORATO	DISEGNATO D'Alessio D. li 02/05/97	DISEGNO
MATERIALE	SCALA	TAVOLA n di
TRATTAMENTO		

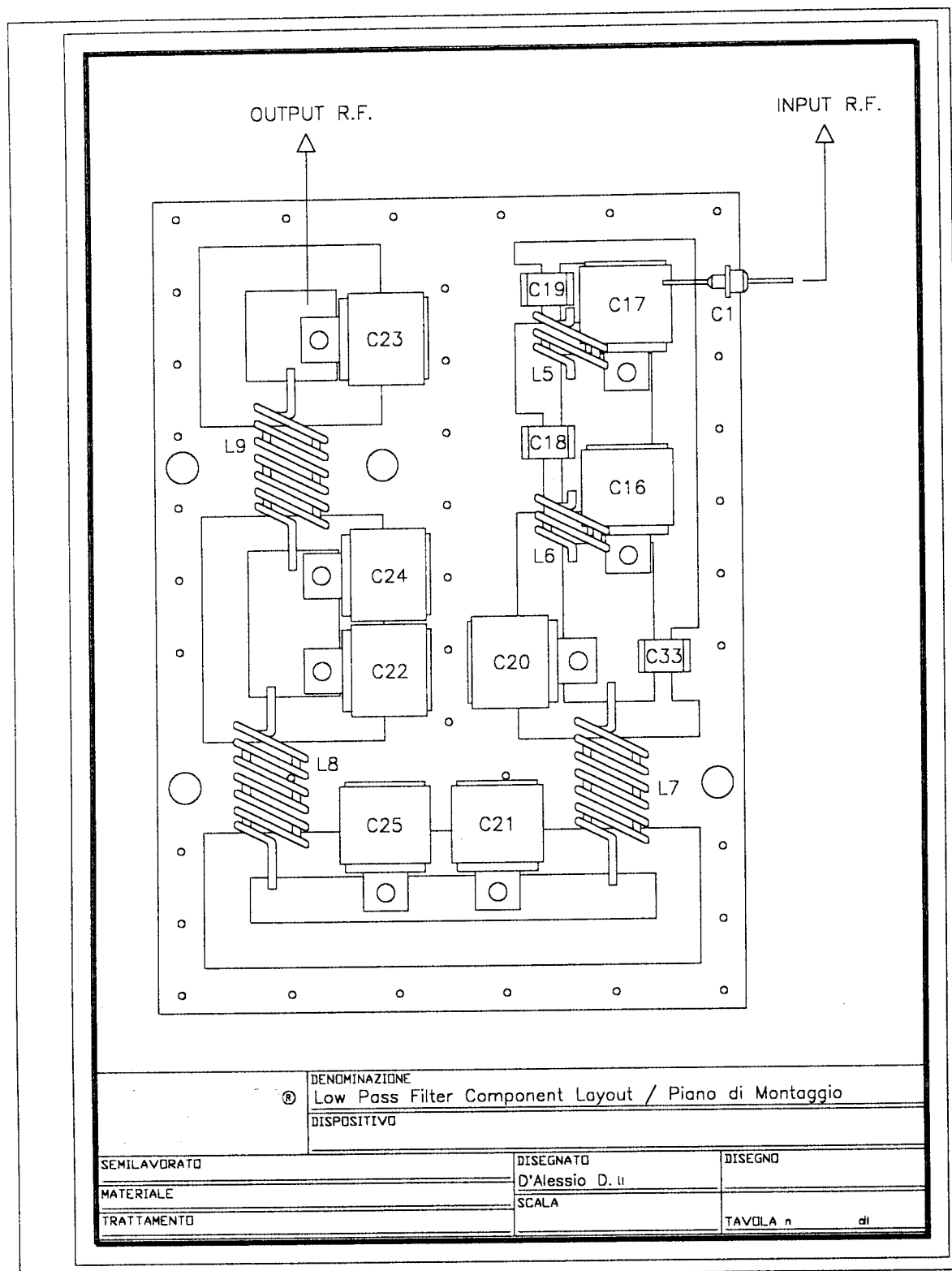
LOW PASS FILTER CARD

- A) Circuit Diagram
- B) Bill of Materials
- C) Component Layout



Title Low Pass Filter Circuit Diagram		
Size A4	Document Number	REV
Date: October 31, 1995	Sheet 1 of 1	

Low Pass Filter			Bill Of Materials		Page 1
Item	Quantity	Reference	Part	Description	Part Order Code
1	2	C19,C33	4p7FHQ	HIGHT Q CAPACITOR	CHQ4,7AJ500
2	1	C18	10pFHQ	HIGHT Q CAPACITOR	CHQ100AJ500
3	8	C16,C17, C20,C21, C22,C23, C24,C25	27pFUNELCO	SILVER MICA CAPACITOR	CSM270XK351
4	1	C1	1nFPAS	CERAMIC THROUGH CAPAC.	CDP102XK500
5	2	L5,L6	L28RVR1.5	2SP D8 RAME ARG. 1.5mm	BFS15000208
6	3	L7,L8,L9	L410RVR2	4SP D10 RAME ARG. 2.0mm	BFS20000410
7	1	J1	SMAF	CONN. SMA F TELAIO	CNTSMAF



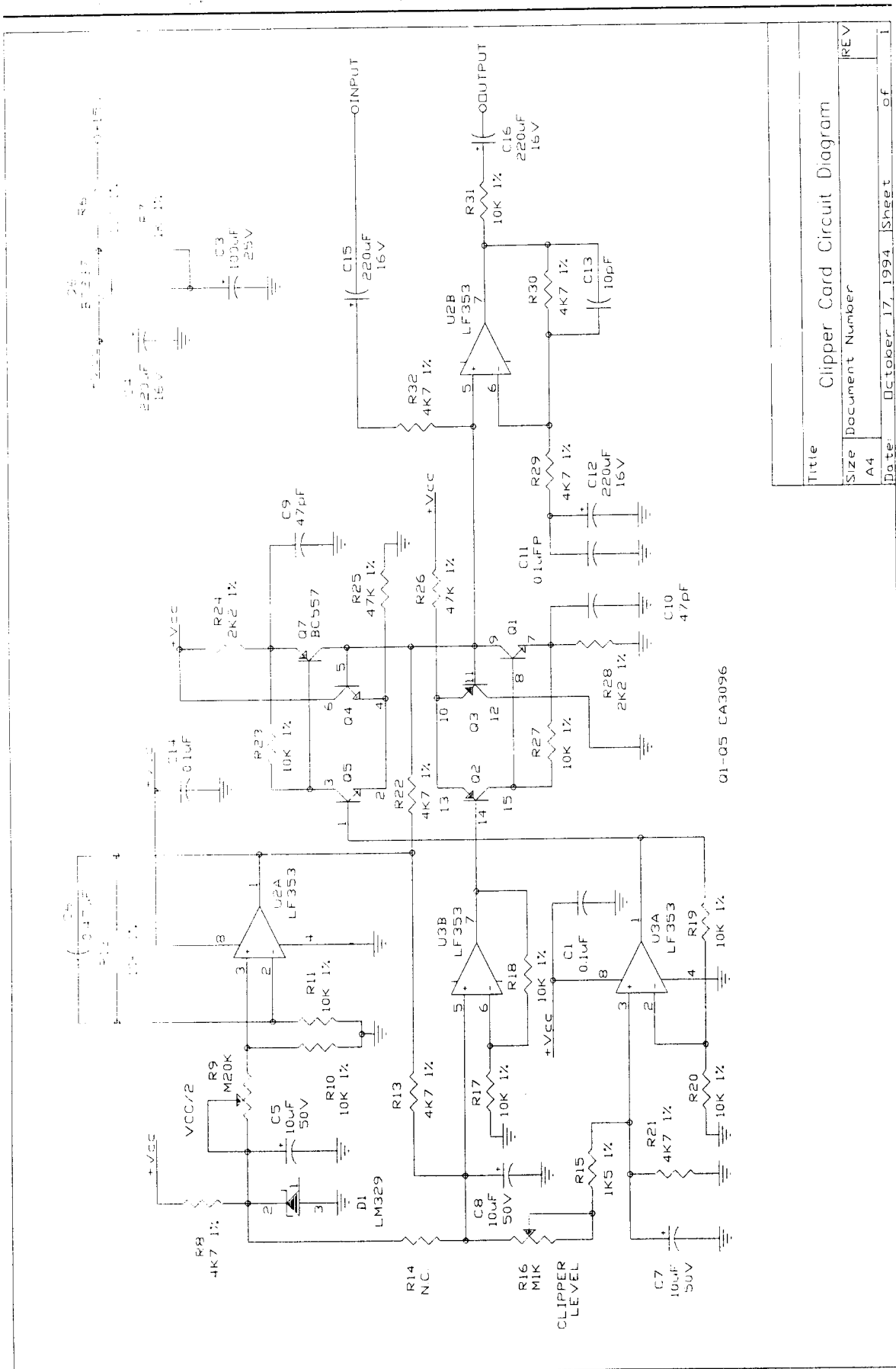
DIRECTIONAL COUPLER CARD

- A) Circuit Diagram
- B) Bill of Materials
- C) Component Layout

Directional Coupler			Bill Of Materials		Page 1
Item	Quantity	Reference	Part	Description	Part Order Code
1	3	R12,R13, R14	47 1%	RESISTOR 1/4W 1%	RSM1/4FH0047
2	2	R1,R2	47#	RESISTOR 2W	RSC002JH0047
3	1	R3	1K	RESISTOR 1/4W 5%	RSC1/4JK0001
4	4	R5,R6, R8,R9	10K 1%	RESISTOR 1/4W 1%	RSM1/4FK0010
5	1	C6	2p2	CERAMIC CAPAC. NPO	CKM2,2BJ600C
6	1	C2	T2p22F	TRIMMER CAPACITOR	CVC2,22CK600
7	2	C3,C4	1nFPAS	CERAMIC THROUGH CAPAC.	CDP102XXK500
8	1	CN2	BNC TELAIO	CONN. BNC A TELAIO	CNTBNCFPV
9	1	CN1	N CONNEC.	CONN. N A TELAIO	CNTNFPFL
10	2	D1,D2	1N4148	SILICON DIODE	DIS1N4148
11	1	TR1	WI-BAND TRF	WIDE-BAND TRANSFORMER	TRFWIDEBAND

CLIPPER CARD

- A) Circuit Diagram
- B) Bill of Materials
- C) Component Layout



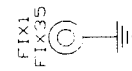
Clipper Card Circuit Diagram

Title		REV
Size	Document Number	
A4		
Date:	October 17, 1994	Sheet of 1

Clipper Card			Bill Of Materials		Page 1
Item	Quantity	Reference	Part	Description	Part Order Code
1	1	R6	100 1%	RESISTOR 1/4W 1%	RSM1/4FH0100
2	1	R7	1K 1%	RESISTOR 1/4W 1%	RSM1/4FK0001
3	1	R15	1K5 1%	RESISTOR 1/4W 1%	RSC1/4FK01,5
4	2	R24,R28	2K2 1%	RESISTOR 1/4W 1%	RSC1/4FK02,2
5	7	R8,R13,R21, R22,R29, R30,R32	4K7 1%	RESISTOR 1/4W 1%	RSM1/4FK04,7
6	10	R10,R11, R12,R17, R18,R19, R20,R23, R27,R31	10K 1%	RESISTOR 1/4W 1%	RSM1/4FK0010
7	2	R25,R26	47K 1%	RESISTOR 1/4W 1%	RSM1/4FK0047
8	1	R16	M1K	TRIMMER MULTIGIRI	RVTMULAK0001
9	1	R9	M20K	TRIMMER MULTIGIRI	RVTMULAK0020
10	1	C13	10pF	CERAMIC CAPACITOR NPO	CKM100BJ600C
11	2	C9,C10	47pF	CERAMIC CAPACITOR NPO	CKM470BJ600C
12	2	C1,C14	0.1uF	CERAMIC CAPACITOR	CKM104BK600P
13	1	C11	0.1uFP	POLIELSTER CAPACITOR	CPE104DK101
14	1	C6	0.47uF	POLIELSTER CAPACITOR	CPE474EK101
15	3	C5,C7,C8	10uF	ELECTROLYTIC CAPACITOR	CEA106AM350
16	1	C3	100uF	ELECTROLYTIC CAPACITOR	CEA107BM350
17	4	C4,C12, C15,C16	220uF	ELECTROLYTIC CAPACITOR	CEA227BM350
18	5	Q1,Q2,Q3, Q4,Q5	CA3096	NPN/PNP TRANSIST. ARRAY	CILCA3096
19	1	D1	LM329	VOLT.PRECISION REFER.	CILLM329
20	1	Q6	BC237	NPN TRANSISTOR	TRNBC237
21	1	Q7	BC557	PNP TRANSISTOR	TRNBC557
22	2	U2,U3	LF353	DOUBLE OP. AMP.	CILLF353
23	1	R14	N.C.	NOT CONNECTED	

TCXO CARD

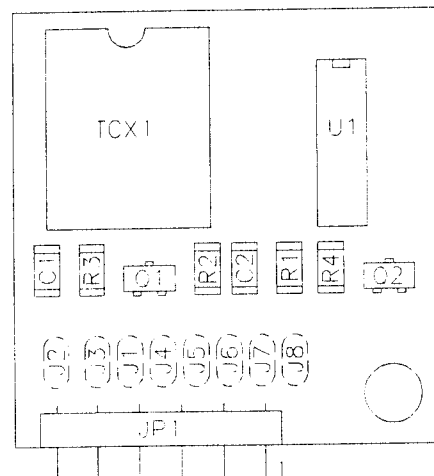
- A) Circuit Diagram
- B) Bill of Materials
- C) Component Layout



F Out	J1	J2	J3	J4	J5	J6	J7	J8
10MHz	✓							
4MHz		X	X		X			
2MHz		X	X	X				
1MHz		X	X				X	
500KHz		X	X					
100KHz		X	X					X

Title		TCXO Card Circuit Diagram	REV
Size	Document Number		TCXO10MHz
A4			
Date	April 18, 1997	Sheet	1 of 1

TCXO Card			Bill Of Materials	Page	1
Item	Quantity	Reference		Part	
1	2	C1,C2		0.1uF	
2	1	FIX1		FIX35	
3	1	JP1		STM06SO	
4	8	J1,J2,J3,J4,J5,J6,J7,J8		JSMD	
5	1	Q1		MMBFJ310	
6	1	Q2		BC857	
7	1	R1		4K7	
8	1	R2		270	
9	1	R3		150K	
10	1	R4		470	
11	1	TCX1		TCXOS	
12	1	U1		74HC390SMD	



		DENOMINAZIONE	
		TCXO Card Component Layout / Piano di Montaggio	
		DISPOSITIVO	
SEMILAVORATI		DISEGNATO	DISEGNO
MATERIALI		D'Alessio D. II	
TRATTAMENTI		SCALA	TAVOLA n di