

INTRODUCTION

This chapter provides steps for configuring and operating the OS System. The main topics are:

- Initial Start-Up Procedure
- OS System Configuration Procedure
- Rectifier
- MCPA
- Controller / Web Page Functions
- Alarm Functions

Initial Start-Up Procedure

Ensure that the OS System is installed per Chapter 2. The OS System should have AC, RF interfaces and possible communication and alarm interfaces. All the required Rectifier, MCPA and RCFU modules are installed. This section walks through the initial power-up and configuration sequence.



CAUTION: Before applying power, refer to Chapter 5 for input power requirements and verify that the OS system input and outputs are properly terminated at 50 ohms. Do not operate the OS system without a load attached. Excessive input power may trigger the overpower alarm disabling or damaging the OS system.

When OS systems are enabled, at least one cabinet door must be closed and secured to provide adequate cooling.

All three OS system slots must be populated with an MCPA, Rectifier, or a blank panel to provide adequate cooling air circulation.

NOTE: The OS system must be warmed up for a minimum of two minutes prior to setting power levels. Failure to properly warm the components may result in lower output power when the components reach operating temperature.

Table 3-1 Initial Start-Up Procedure

Steps	Action
1	Ensure that the AC is connected and disabled to the OS system
2	Ensure that the TX/RX ANT port is terminated properly
3	Open the front and rear door of the OS system. Pull-out the plungers for both front and rear intrusion switches. (Note: this is the only time when both doors should be open).
4	Ensure all unused sectors have blank panels installed.
5	Enable the AC power.
6	Upon power-up the fans will both enable at full speed and then ramp down and possibly disable. Ensure both fans operate.
7	Measure the primary AC voltage (180 to 265VAC). If the AC voltage is above or below the limits consult an Electrician before proceeding.

Table 3-1 Initial Start-Up Procedure (Continued)

8	Measure the output DC voltage. There is a fused output for each MCPA and the Controller. All outputs should be 28.5V +/-0.5Vdc. If the voltage measurements are non-compliant with the limits troubleshoot the power system before proceeding.
9	Close and secure the rear door to ensure the rear fan will operate
10	Enable all of the installed MCPAs. After ~10seconds the MCPAs should display a solid green LED. If not a solid green reference the troubleshooting section in Chapter 4.
11	The LEDs on the front panel of the controller will illuminate solid green for the enabled and functioning sectors. Alarms may be present; the configuration portion of the installation should be performed.

OS System Configuration

Configure PC for Communication

Powerwave products typically have two LAN connections for interfacing with the customer's equipment for control and monitoring of the product, see Figure 3-1. The "Site LAN" is used to interface with the customer's base station (BTS) equipment for remote control and monitoring and the "Local LAN" is used for walk up or local control and monitoring. The Site LAN IP address is assigned automatically by DHCP. The Local LAN IP address is fixed from the factory at 192.168.255.1. To communicate with the product via the Local LAN, the user must configure the laptop with a fixed IP address such as "192.168.255.2".

There are several ways to access the Network Connections dialog box and may be different from operating system to operating system. The following steps in Table 3-2 and Figures 3-1 through 3-6 are based on using Windows XP.

Table 3-2 Configure PC for Communication

Step	Action
1	Connect a laptop PC to the front Ethernet port on the control module with a network cross-over cable. See Figure 3-1.
2	Go to Network Connections through either the Control Panel, the Start Menu, or by clicking the Network Connections icon in the system tray. See Figure 3-2.
3	Right click and select "disable" for the "Local Area Connection" or appropriate network connection that will be connected to the Local LAN.
4	Right click and select "properties" to bring up the "Properties" dialog box. See Figure 3-3.
5	In the "This connection uses the following items:" field, deselect all checkboxes except the Internet Protocol (TCP/IP) checkbox. See Figure 3-3
6	Highlight the "Internet Protocol (TCP/IP)" menu item and select Properties to bring up the "Internet Protocol (TCP/IP) Properties" dialog box. See Figure 3-4.
7	Check "Use the following IP address" and enter the fixed IP address such as "192.168.255.2." Enter the Subnet mask of 255.255.255.0. See Figure 3-5.
8	Select "OK" and then "Close."
9	Right click on the network connection and select "Enable." See Figure 3-6.
10	Open a web browser and type in the following web page - http://192.168.0.1.8080 .
11	Type in " User" as the User ID and "Password" for the Password.
12	Choose Submit.

The PC's network interface should now be ready to communicate through the Local LAN.

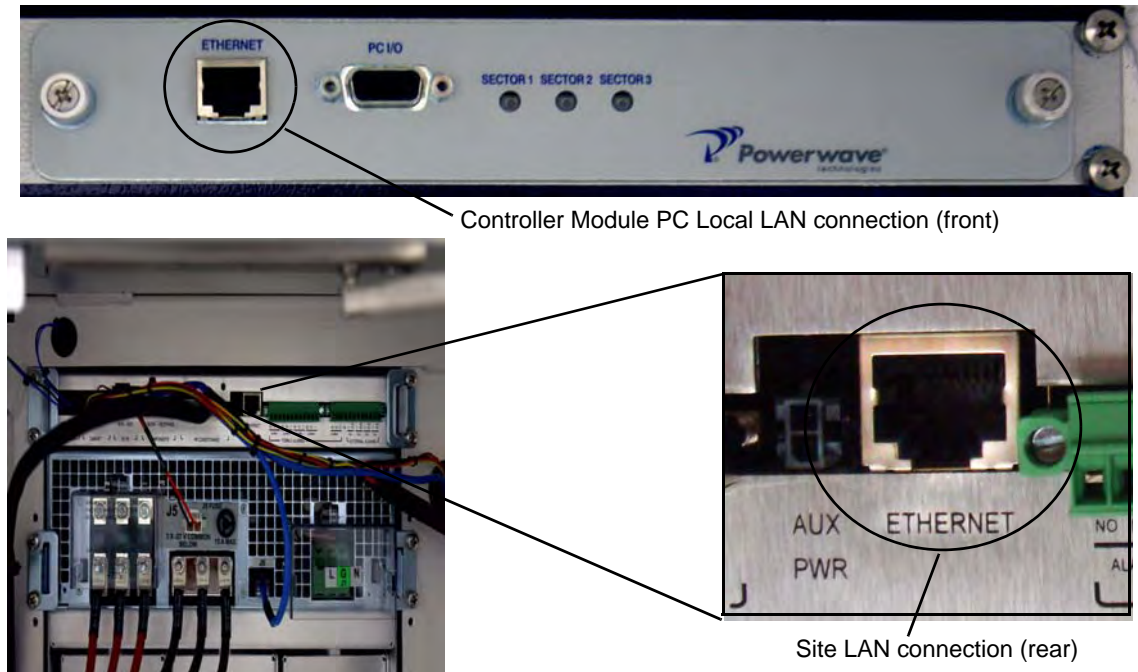
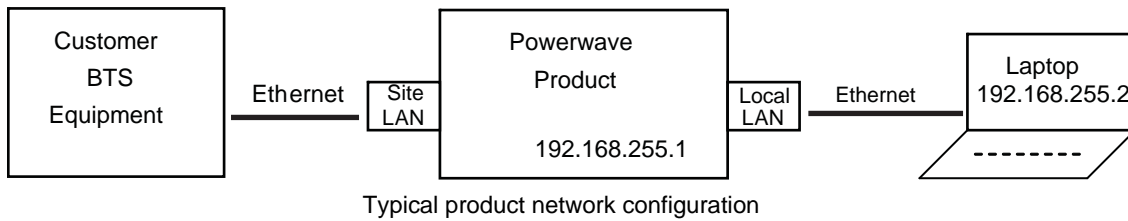


Figure 3-1 Network Configuration and Controller Module Connections

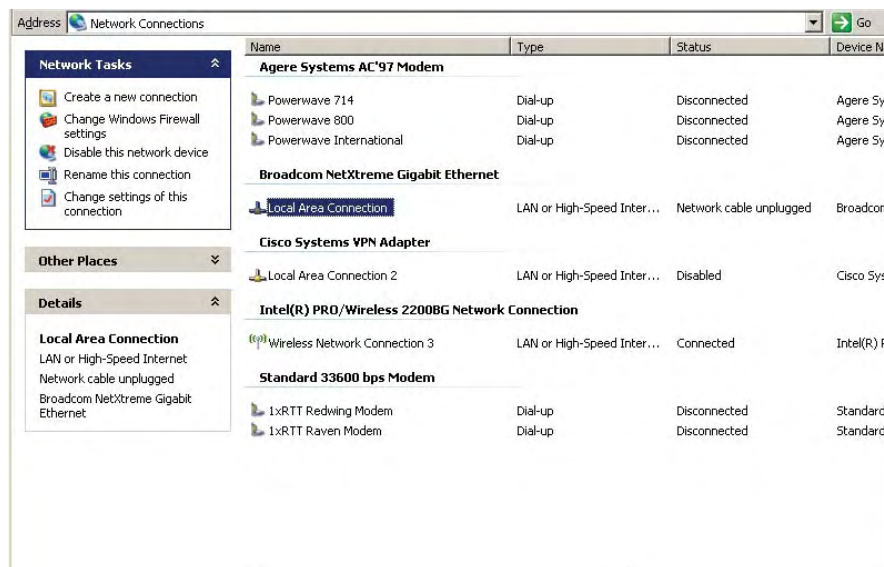


Figure 3-2 Network Connections Dialog Box

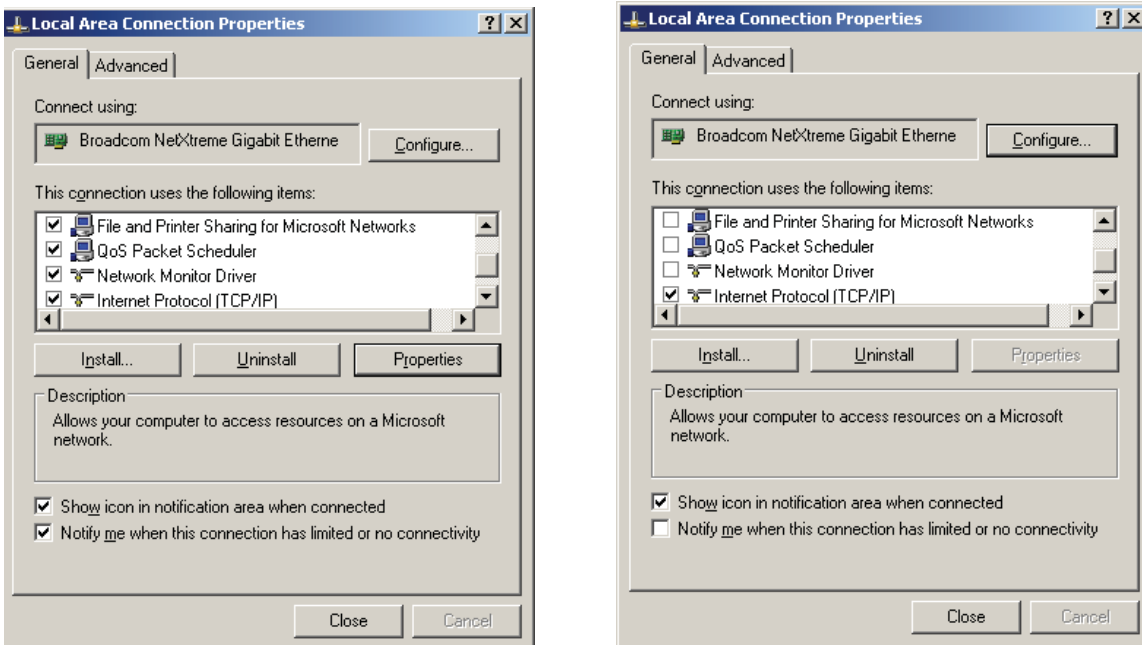


Figure 3-3 Local Area Connection Properties Dialog Box

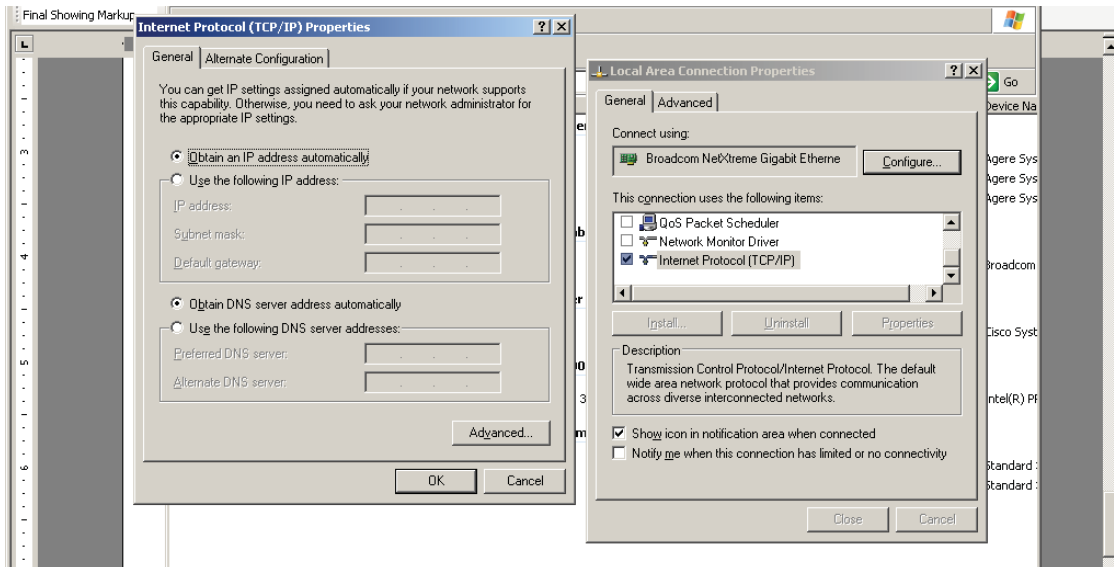


Figure 3-4 Internet Protocol (TCP/IP) Properties.

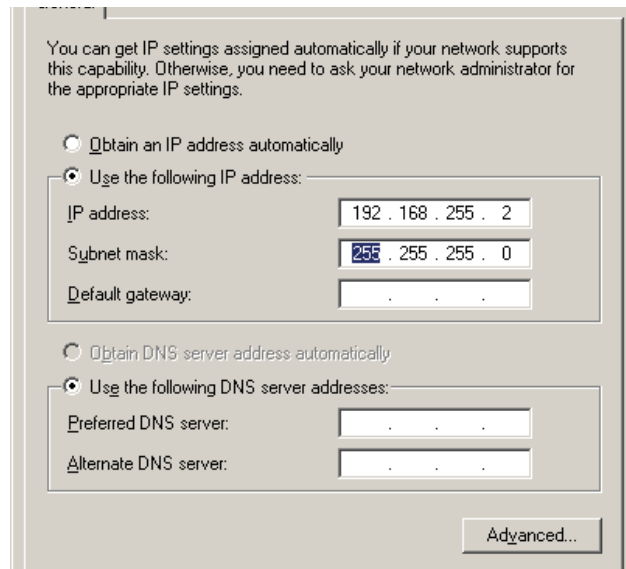


Figure 3-5 Setting the IP Address.

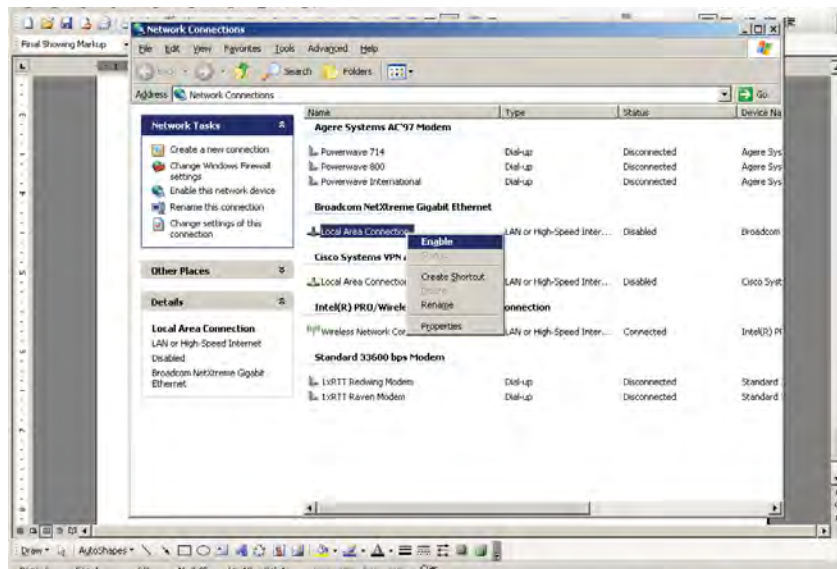


Figure 3-6 Enable the Connection

Activate Sectors

Table 3-3 Activate Sectors

Step	Action
1	Select the System/Configuration Page. See Figure 3-15
2	Using the pull-down menus in the Installed section choose YES for the Sectors to be utilized. The Sectors are 1 (front left), 2 or 3 (front right). Default is NO
3	Choose SUBMIT to accept and apply the changes. To abort changes choose another page without applying submit.

Activate Rectifier Modules

Table 3-4 Activate Rectifier Modules

Step	Action
1	Select the System/Configuration Page. See Figure 3-15.
2	Using the pull-down menus in the Rectifier/Installed section, choose YES to activate the Rectifier Modules. Reference the rectifier positions detailed on the front rack ears of the power system. Default is NO.
3	Choose SUBMIT to accept and apply the changes. To abort changes choose another page without applying submit.

Activate TMA Channels (2 per Sector)

CAUTION: This parameter sources +12 V at 500 mA maximum to antenna ports. Caution should be used if antenna ports are connected to test equipment with 0 VDC tolerance.

To prevent a short circuit and alarm situation, all antenna port connections must be complete prior to enabling TMA DC supplies.

NOTE: These configurations enable DC voltage at antenna ports and enable RX fault monitoring. Each Rx channel sources +12 V at 500 mA maximum. Any current less than 40mA will generate a LO CURRENT fault. Any current greater than 150mA will generate a HI Current fault. Any current greater than 500 mA will disable the DC source for that channel and generate a HI CURRENT fault.

A HI CURRENT condition attempts to auto-recover every five minutes by enabling the DC to Rx channel. If fault condition is cured, alarm clears and source remains on. If fault is present, there is no change in status.

Table 3-5 Activate TMA Channels

Step	Action
1	Select the System/Configuration Page. See Figure 3-15.
2	Using the pull-down menus in the TMA Main/Diversity sections choose ENABLE for the TMAs to be utilized. Default is DISABLED
3	Choose SUBMIT to accept and apply the changes. To abort changes choose another page without applying submit.
4	Navigate to the Status / Dynamic page. See Figure 3-17.
5	Verify the correct TMA channels have the correct current draw per the specifications of the TMA. Currents less than 40mA or greater than 150mA will assert a fault. Currents greater than 450mA will crowbar the power source. The system will retry every 5-minutes to enable the channel in the event the short is remedied. A crowbar can also be reset by configuring the channel disabled and then enabled.

Adjust LNA Gain

Table 3-6 Adjust LNA Gain

Step	Action
1	Select the System/Configuration Page. See Figure 3-15.
2	In the appropriate LNA gain section enter the desired LNA gain: a. format = X.XdB b. range = 0.0 to 13.0dB, default is 10.0dB c. step size = 0.5dB
3	Choose SUBMIT to accept and apply the changes. To abort changes choose another page without applying submit.

Adjust Tx Gain

Table 3-7 Adjust Tx Gain

Step	Action
1	Select the System/Configuration Page. See Figure 3-15.
2	In the appropriate Tx gain section enter the desired Tx gain: a. format = X.XdB b. range = 0.0 to 18.0dB, default is 5.0dB c. step size = 0.1dB
3	Choose SUBMIT to accept and apply the changes. To abort changes choose another page without applying submit.

Adjust VSWR Alarm

Table 3-8 Adjust VSWR Alarm

Step	Action
1	Select the System/Configuration Page. See Figure 3-15.
2	Using the pull-down menus in the VSWR Alarm section; choose a value with dependant on the system integrity. Provide adequate margin to prevent false alarms a. value = return loss b. format = 0.0dB c. range = 0.0 to 12.0dB, default 0.0dB
3	Choose SUBMIT to accept and apply the changes. To abort changes choose another page without applying submit.

Activate External Alarm Inputs

Table 3-9 Activate External Alarm Inputs

Step	Action
1	Select the System/Configuration Page. See Figure 3-15.
2	Using the pull-down menus in the External Alarms Configuration section choose one of the following dependant on external equipment: a. OFF – default, no alarm reporting (default) b. NO – short contact to Common for major alarm c. NC – open contact to Common for major alarm
3	Choose SUBMIT to accept and apply the changes. To abort changes choose another page without applying submit.

Status Verification

Table 3-10 Status Verification

Step	Action
1	Select the Status/Static Page. See Figure 3-16.
2	Verify the OS System is configured correctly.
3	Select the Status/Alarms Page. See Figure 3-18.
4	Verify that none of the parameters display FAIL.
5	Select the Status/Dynamic Page. See Figure 3-17.
6	View the operating performance of measured system parameters: <ol style="list-style-type: none"> Forward and Reflected Sector Power Sector Output Return Loss Alarm Status MCPA and Rectifier module status Critical temperatures, voltages and currents

Rectifier

The rectifier module, shown in Figure 3-6, powers up automatically when AC power is applied to the OS. The dual color LED indicator located at the upper-right side of the front panel displays rectifier status as listed in Table 3-11.

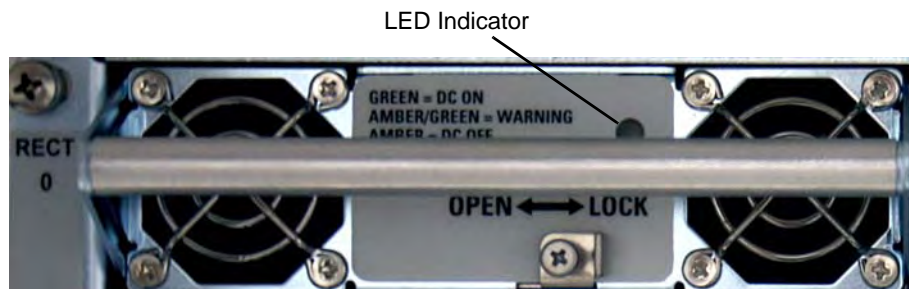


Figure 3-7 Rectifier Front Panel

Table 3-11 Rectifier Status Indicator

LED Conditions	Function
GREEN	DC on
AMBER/GREEN	Warning
AMBER	DC off

MCPA

MCPA controls and indicators listed in Table 3-12, are located on the MCPA front panel. MCPA operation is controlled by the OFF/ON/RESET RF toggle switch. MCPA status is displayed by a tri-colored LED.

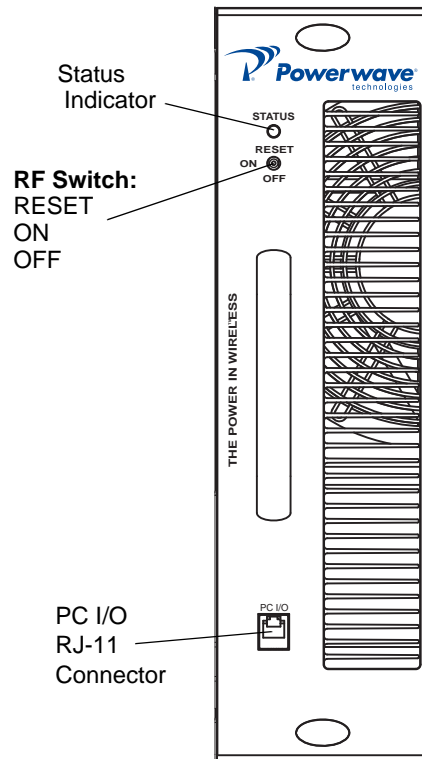


Figure 3-8 MCPA Front Panel

Table 3-12 MCPA Controls and Indicators

Controls/Indicator	Description
Controls (RF)	
Toggle Switch - RESET (Up Momentary)	Resets the MCPA
Toggle Switch - ON (Center)	Enables RF
Toggle Switch - OFF (Down)	Disables RF
Indicator	
Tri-Color LED	GREEN (solid) MCPA enabled, no alarm
	GREEN (blinking) MCPA in standby, no output power
	Yellow (solid) Automatic Power Control (APC)
	Yellow (blinking) VSWR alarm
	Red (solid) MCPA disabled
PC I/O	Factory use only

Controller Web Pages



Figure 3-9 Controller Module

System – Download

Displays the current firmware version and allows firmware related functions. The Controller accommodates two versions of firmware. The download page will allow the user to toggle between side “A” and side “B” firmware versions or to download new firmware versions.

Software Download

Downloading a new version of code from the Web Page interface is very easy. It involves selecting only a couple of options and pressing the “Download Now” button as shown in Figure 3-10. The software will access the FTP server running on your PC and download the selected file. A CRC check will be performed on the downloaded file and, if correct, the software will write the downloaded file to flash memory. After the flash memory write is complete, the software will automatically reset and start executing on the newly downloaded software.

Follow the steps in Table 3-13 to use the web page for downloading code.



Figure 3-10 Download Web Page

Table 3-13 Downloading Code

Step	Action
1	Verify an FTP server is running at the IP address listed on the download page, as shown in Figure 3-10. Usually this is your PC’s IP address. A free FTP server is “GuildFtpd” and can be downloaded from http://www.guildftpd.com/ .
2	Place the file to download in the default FTP directory, for example “c:\ftproof”.
3	Select the side to download to, ‘A’ or ‘B’ as shown in Figure 3-10.
4	Press the Browse button and navigate to the FTP download directory as shown in Figure 3-11. Select the file to download.

Table 3-13 Downloading Code (Continued)

5	Press "Download Now" to start downloading as shown in Figure 3-12. Note that the status indicates "Download Initialized." The status will be updated with download progress.
6	Once the download is complete, as shown in Figure 3-14, the Status will indicate "Successful" and will automatically reset to the side selected for download. The system will reset and all web pages will have expired. So, when using your browser, you must re-navigate to the opening web page and log in again.

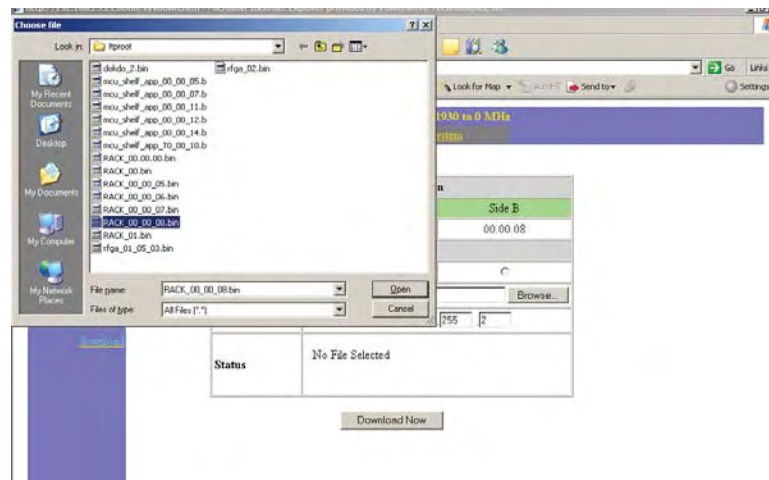


Figure 3-11 Select File to Download



Figure 3-12 Download Now



Figure 3-13 Download In Progress



Figure 3-14 Download Complete

System – Configuration

This page allows modifications to the system such as Gain adjustment, TMA control, VSWR Alarm threshold, and Sector and Hardware configurations. All System functions are accessible through this page.



Figure 3-15 System - Configuration page

- *Installed* – Allows sector configuration. Select YES for sectors to be active, choose NO for sectors to remain vacant. Choose SUBMIT to accept the changes to the page. Initial default is enabled.
- *Tx Gain* – Allows sector’s TX gain adjustment. Type in the desired gain value in 0.1 dB steps. Choose SUBMIT to accept the changes to the page. Initially set to 5.0dB.
- *LNA Gain* - Allows sector’s LNA gain adjustment. Type in the desired gain value in 0.5 dB steps. Choose SUBMIT to accept the changes to the page. One LNA Gain value per sector applies to the main and diversity LNA channels. Initially set to 0.0dB.
- *TMA Main* – Controls the operation of the Main TMAs. Choose ENABLE for TMA use and DISABLE to suspend TMA use. Choose SUBMIT to accept the changes to the page. Initial default is disabled.
- *TMA Diversity* – Controls the operation of the Diversity TMAs. Choose ENABLE for TMA use and DISABLE to suspend TMA use. Choose SUBMIT to accept the changes to the page. Initial default is disabled.
- *VSWR Alarm LL* – Allows configuration of the VSWR Alarm threshold. The range is 0.0 to 12.0. Adjustment does not alter protection shutdown thresholds.
- *RECTIFIERS* – Controls alarm reporting for each rectifier module (4-total). Configuration does not effect the operation of the rectifier modules. The rectifier modules are plug n’ play, if they are inserted with a green LED they are operating. Choose YES for every inserted module to ensure proper alarm reporting. Choose NO for vacant rectifier slots. Choose SUBMIT to accept the changes to the page. Initial default is YES. Vacant rectifier slots should be plugged with blank panels to optimize thermal characteristics of the system.
- *External Alarms* – The system has the capability to detect four form-c inputs. The configuration allows the each of the four alarms to be configured individually. Choose OFF (default) to disable an alarm channel. Choose NO (Normally Open) to receive a normally open form-c alarm. Choose NC (Normally Closed) to receive a normally closed form-c alarm. Received faults will assert a system Major alarm. Choose SUBMIT to accept the changes to the page.

Status – Static

This page displays the current configuration of the system. The items displayed are not editable and are for information only.

	UCM	Sector A	Sector B	Sector C	Units
Installed	YES	YES	YES		
Firmware	00 00 T9	01 00 00	01 00 00	01 00 04	
Tx1 Gain		0.00	0.00	0.00	dB
Tx2 Gain		0.00	0.00	0.00	dB
Tx3 Gain		0.00	0.00	0.00	dB
Tx4 Gain		0.00	0.00	0.00	dB
LNA Gain		0.00	0.00	0.00	dB
TMA Main		DISABLE	DISABLE	DISABLE	
TMA Diversity		DISABLE	DISABLE	DISABLE	

Uncalibrated values appear in red.

Figure 3-16 Status - Static page

- Installed – Installed sectors are Yes. Disabled sectors are No.
- Firmware – System and MCPA firmware versions.
- Tx1 Gain – Displays the Tx1 gain setting for each sector.
- Tx2 Gain – Displays the Tx2 gain setting for each sector.
- Tx3 Gain – Displays the Tx3 gain setting for each sector.
- Tx4 Gain – Displays the Tx4 gain setting for each sector.
- LNA Gain – Displays a LNA gain setting for each sector, showing the main and diversity channels.
- TMA Main – Displays the status of each channel.
- TMA Diversity – Displays the status of each channel.

Status – Dynamic

This page displays the current status of the system. The items displayed are not editable and are for information only.

	UCM	Sector A	Sector B	Sector C	Units
State	DEGRADE	FAIL	MISSING	MISSING	
Temperature	24	63	65	66	C
Forward Power		0			W
Reverse Power		0			W
Return Loss		0.00			dB
TMA Main		95			mA
TMA Diversity		94			mA
Alarm Summary	MINOR	CRITICAL	CRITICAL	CRITICAL	
MCPAs					
APC		OFF	OFF	OFF	
Front Panel Switch		ON	ON	ON	
Rectifiers	1	2	3	4	
Installed	YES	YES	YES	YES	
Comm Status	Comm	Comm	Comm	Comm	
Current	6	6	6	8	A
Voltage Out	26.25	26.50	26.25	26.25	VDC
Temperature	31.00	31.00	33.00	35.00	C
Fans	FT	FB	RT	RB	
Speed	0	0	4149	0	RPM

Figure 3-17 Status - Dynamic page

State

- DEGRADE = Minor system fault Fan / Intrusion /
- PASS = Enabled and no faults
- FAIL = Faulted (see the STATUS – ALARM page for details)
- MISSING = Sector is Enabled with missing components, critical sector alarm state.

Temperature – Display of real time temperature sensors for the main system components.

Forward Power – The output power detected at the TX/RX ANT Port for each sector in Watts.

Reverse Power - The reverse power detected at the TX/RX ANT Port for each sector in Watts.

Return Loss – Real-time measurement of the return loss at the TX/RX ANT Port in dB.

TMA Main – Each TMA channels current draw in mA.

TMA Diversity – Each TMA channels current draw in mA.

Alarm Summary – MINOR, MAJOR, CRITICAL status for each sector or system. See the Status – Alarm page for details

MCPA APC

- OFF — No APC
- ON — APC active and gain display is in accurate and channel is overdriven. Reduce input source or reduce sector gain.

MCPA Front Panel Switch

- OFF — MCPA disabled via the front panel switch
- ON — MCPA front panel switch is on.

Rectifiers – Installed

- YES — Alarm reporting for this channel is enabled.
- NO — Alarm reporting is disabled for this rectifier channel.

Rectifiers – Comm Status

- Comm — Rectifier module installed, alarm reporting enabled and no faults

Rectifiers – Current

The DC current output of each rectifier module. Total DC consumption is the sum of the four rectifiers. Current sharing technology allows for equal readings for each channel. The DC current is displayed in Amperes.

Rectifiers – Voltage Out –The DC voltage output sensed from each rectifier module. Voltage should be ~28.5Vdc.

Rectifiers – Temperature –The temperature of each rectifier module in degrees Celsius.

Fans – Speed –The RPM display of each of the systems fans. If the system only utilizes 2 fans the FT (front top) and RT (rear top) positions are active. Maximum RPMs are >4000.

Status – Alarms

This page displays the current detailed alarm status of the system. The items displayed are not editable and are for information only.

Alarm	Status	Alarm	Status	Alarm	Status
Minor	FAIL	Rect VAC Low	PASS	Fan Fail FT	FAIL
Major	PASS	Rect VAC High	PASS	Fan Fail RB	NON-OP
DC 27V Fail	PASS	Rect VDC Low	PASS	Fan Fail RT	NON-OP
DC 13V TMA	PASS	Rect VDC High	PASS	Fan Fail RB	PASS
Over Temp Warn	PASS	Rect Current Limit	PASS	Intrusion Front	NON-OP
MODEM Comm	DISABLED	Rect Other	PASS	Intrusion Rear	FAIL
Rect 1 No Comm	PASS	Rect All Comm Fail	PASS	Ext Alarm Input 1	DISABLED
Rect 2 No Comm	PASS			Ext Alarm Input 2	DISABLED
Rect 3 No Comm	PASS			Ext Alarm Input 3	DISABLED
Rect 4 No Comm	PASS			Ext Alarm Input 4	DISABLED
Sector A		Sector B		Sector C	
Critical	FAIL	Critical	FAIL	Critical	FAIL
MCPA Summary	PASS	MCPA Summary	PASS	MCPA Summary	PASS
Bypass V	PASS	Bypass V	PASS	Bypass V	PASS
5V	PASS	5V	PASS	5V	PASS
LNA Alarm 1	FAIL	LNA Alarm 1	PASS	LNA Alarm 1	PASS
LNA Alarm 2	FAIL	LNA Alarm 2	PASS	LNA Alarm 2	PASS
I TMA Bias 1	DISABLED	I TMA Bias 1	DISABLED	I TMA Bias 1	DISABLED
V TMA Bias 1	DISABLED	V TMA Bias 1	DISABLED	V TMA Bias 1	DISABLED
I TMA Bias 2	DISABLED	I TMA Bias 2	DISABLED	I TMA Bias 2	DISABLED
V TMA Bias 2	DISABLED	V TMA Bias 2	DISABLED	V TMA Bias 2	DISABLED
VSWR	PASS	VSWR	PASS	VSWR	PASS

Figure 3-18 Status - Alarms page

The alarms page is organized in a top and bottom section. The top lists on 3 columns the detailed system alarms related to common system components. The bottom section is divided into the 3 sectors and detail RF performance issues. A PASS should be displayed for all parameters. A FAIL signifies an issue to be resolved. This page should be displayed during every maintenance visit.

User

This page allows for modifications to system identification, password and serial number display.

Description	Value								
My ID Number (0-6)	<input type="text" value="0"/>								
Cascade Code (16 max)	<input type="text" value="cascade"/>								
Serial Number (12 max)	<input type="text" value="05LU01123456"/>								
Misc (13 max)	<input type="text" value="G5 V1.0"/>								
User ID (10 max)	<input type="text" value="User"/>								
Password (10 max)	<input type="text" value="Password"/>								
Trap Destinations	<table border="1"> <tr> <td><input type="text" value="192"/></td> <td><input type="text" value="168"/></td> <td><input type="text" value="255"/></td> <td><input type="text" value="2"/></td> </tr> <tr> <td><input type="text" value="0"/></td> <td><input type="text" value="0"/></td> <td><input type="text" value="0"/></td> <td><input type="text" value="0"/></td> </tr> </table>	<input type="text" value="192"/>	<input type="text" value="168"/>	<input type="text" value="255"/>	<input type="text" value="2"/>	<input type="text" value="0"/>	<input type="text" value="0"/>	<input type="text" value="0"/>	<input type="text" value="0"/>
<input type="text" value="192"/>	<input type="text" value="168"/>	<input type="text" value="255"/>	<input type="text" value="2"/>						
<input type="text" value="0"/>	<input type="text" value="0"/>	<input type="text" value="0"/>	<input type="text" value="0"/>						

Figure 3-19 User page

My ID Number – Entry will assign a unique address to the system. The address is useful for identifying individual booster cabinets.

Cascade Code – Enter the code required for wireless modem interface.

Serial Number – Display only.

Misc – System Version, display only.

User ID – Change from default “User”.

Password – Change from default “Password”.

Submit – Click to accept all changes.

Alarm Functions

Alarm Status Indicators (front panel)

There are three dual element LEDs displaying the system status. Each LED is mapped to a sector. The LED is defined by the following chart:

Table 3-14 LED Functions

RATE	COLOR	PURPOSE
Solid	Green	Normal
1 Hz	Green	FW Download
Solid	Red	Critical Fault / Bypass
Solid	Red & Green	Minor/Major Fault

PC Interface (front panel)

An RS232 interface for testing purposes.

Ethernet Interface (front panel)

Connect Ethernet on controller to Ethernet interface on PC with a crossover RJ45 cable. This port is intended for local control and monitoring on a temporary basis

Ethernet Web Page Procedure

Table 3-15 Ethernet Web Procedure

Step	Action
1	Connect Ethernet crossover cable from PC to modem front panel ETHERNET connector.
2	Boot up PC.
3	On PC, go to Start-Settings-Control Panel Network Connections. Right click on Local Area Connection, then select Properties.
4	After Local Area Connection Properties window opens, deselect all functions except Internet Protocol (TCP/IP).
5	Double click on Internet Protocol (TCP/IP) to open Internet Protocol (TCP/IP) Properties window.
6	Select "Use the following IP address".
7	At "IP address" type in 192.168.0.2, then press Tab key. Subnet mask fills in 255.255.255.0. Select OK to close window.
8	Select OK to close Local Area Connection Properties window.
9	Open Internet Explorer.
10	Using Internet Explorer Address bar, type http://192.168.0.1, then press Enter key. The Powerwave Twoport application is enabled and Log In screen is displayed.

Ethernet Interface (rear panel)

This port is intended for control and monitoring by a BTS or Remote Network Management System on a permanent basis.

Form-C / External Alarm Interface (rear panel)

Reference the Form-C and External Alarm interface section in chapter 2 for pin-outs and installation.

Form-C Alarms

The alarm status is reported via Form-C contacts. There are five Form-C alarms: ALARM1 through ALARM5. The alarms are detailed as follows:

Alarm 1

Minor Alarm - all sectors:

- Any cabinet fan fault.
- Intrusion – if one or both booster doors are opened.
- Rectifier Communication Fault.

Alarm 2

A Major Alarm - all sectors:

- TMA1 or TMA2 is faulted (if both enabled), but not both faulted.
- TMA3 or TMA4 is faulted (if both enabled), but not both faulted.
- TMA5 or TMA6 is faulted (if both enabled), but not both faulted.
- LNA1 or LNA2 is faulted, but not both faulted.
- LNA3 or LNA4 is faulted, but not both faulted.
- LNA5 or LNA6 is faulted, but not both faulted.
- Any rectifier fault.
- Any External Alarm fault.
- No communication from the MODEM (if applicable).

Alarm 3

A Critical alarm Sector "A" will be asserted if:

- MCPA_A is disabled or vacant.
- All enabled Sector A TMA channels are faulted.
- All Sector A LNA channels are faulted.
- A VSWR fault on Sector A.
- All Rectifiers Faulted.
- RFCU_A removed.
- If the BYPASS_V_A or +5V_EXT_A signals are faulted.

Alarm 4

A critical alarm Sector "B" will be asserted if:

- MCPA_B is disabled or vacant.
- All enabled Sector B TMA channels are faulted.
- All Sector B LNA channels are faulted.
- A VSWR fault on Sector B.
- All Rectifiers Faulted.
- RFCU_B removed.
- If the BYPASS_V_B or +5V_EXT_B signals are faulted.

Alarm 5

A critical alarm Sector "C" will be asserted if:

- MCPA_C is disabled or vacant.
- All enabled Sector C TMA channels are faulted.
- All Sector C LNA channels are faulted.
- All Rectifiers Faulted.
- RFCU_C removed.
- A VSWR fault on Sector C.
- If the BYPASS_V_C or +5V_EXT_C signals are faulted.

External Alarm Inputs

Reference the External Alarm interface section on page 2-7 for pin-outs and installation. Utilize the System/ Configuration page; External Alarms section for configuration options.