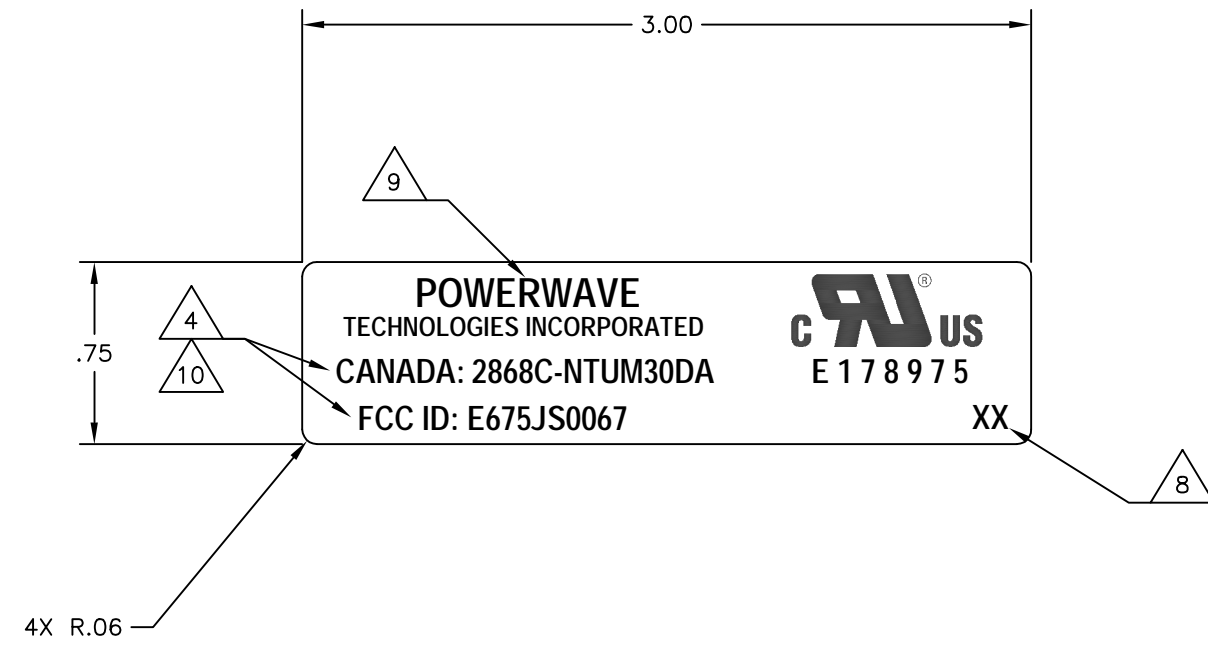


THE INFORMATION CONTAINED IN THIS DOCUMENT IS PROPRIETARY TO POWERWAVE TECHNOLOGIES. ANY REPRODUCTION IN PART OR WHOLE WITHOUT PRIOR WRITTEN AUTHORIZATION OF POWERWAVE TECHNOLOGIES IS PROHIBITED.

REVISIONS		
REV	DESCRIPTION	REV BY
A	REL PER ECO-21xxx	JR

NOTES: UNLESS OTHERWISE SPECIFIED

1. WORKMANSHIP PER POWERWAVE STANDARDS MANUAL D090-05002.
2. MATERIAL: .002-.004 THICK, WHITE POLYESTER WITH PRESSURE SENSITIVE ADHESIVE BACK, 3M # PS 467.
3. TEXT COLOR SHALL BE BLACK.
4. TEXT FONT IS UNIVERS 67, 10pt.
5. LABELS TO BE SUPPLIED INDIVIDUALLY CUT 50 PER BUNDLE.
6. BAG AND TAG 1000 LABELS PER BAG WITH PART NO. AND CURRENT REVISION LETTER.
7. THE MATERIAL SHALL BE SHIPPED WITH THE FOLLOWING INFORMATION IN PACKAGING THAT WILL PREVENT DAMAGE DURING SHIPPING, HANDLING AND STORAGE.
 - A. VENDOR NAME
 - B. POWERWAVE PART NUMBER
 - C. POWERWAVE P.O. NUMBER
 - D. QUANTITY
8. TEXT "XX" IS LABEL MANUFACTURER'S CSA DESIGNATION. TEXT FONT IS UNIVERS 67, 6pt.
9. PHOTO READY ARTWORK MUST BE OBTAINED FROM POWERWAVE.
10. TEXT IS SHOWN FOR ILLUSTRATIVE PURPOSES ONLY. FOLLOW OTHER NOTES FOR EXACT INFORMATION REGARDING FONT SIZE AND TYPE.
11. APPROVAL IN WRITING BY POWERWAVE AND NORTEL/ NETWORKS OF PHOTOGRAPHIC QUALITY ARTWORK PROOF IS REQUIRED BEFORE VENDOR CAN MANUFACTURE THE LABEL.
12. HANDLE, PACKAGE, AND SHIP PER POWERWAVE PROCEDURE D091-02002.



SEE TABULATION BLOCK FOR PART REVISION

UNLESS OTHERWISE SPECIFIED DIMENSIONS ARE IN INCHES TOLERANCES ARE: FRACTIONS DECIMALS ANGLES .XX±.01 ± 1° .XXX±.005		CAD GENERATED DRAWING DO NOT MANUALLY UPDATE THIRD ANGLE PROJECTION		1801 E. St Andrew Place Santa Ana, California 92705 +1.714.466.1000	
MATERIAL 2.		APPROVALS DRAWN J.ROBERSON		DATE 030529	
FINISH		ELEC		TITLE LABEL, REGULATORY, NTUM30DA	
DO NOT SCALE DRAWING		QA		SCALE 1/1	
				CAGE CODE OFST3	
				DWG. NO. D100-07390-001	
				REV A	
				RELEASE DATE	
				SHEET 1 OF 1	