

14:25:29 SEP 14, 1999
POWER OUTPUT: VOICE+SAT MODE

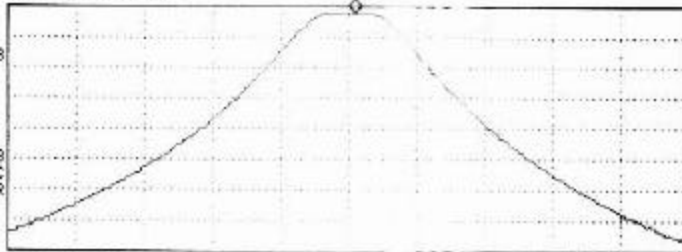
RES DET: PEAK
RES DET: PEAK QP AVG
MKR 869.0050 MHz
47.62 dBm

#1

LOG REF OFFST 51.5 dB
10 REF 49.5 dBm

dB/
ATN
10 dB

VA SB
SC FC
CORR



CENTER 869.0000 MHz

#IF BW 80 kHz

AVG BW 30 kHz

SPAN 500.0 kHz

SWP 20.0 msec

POWER OUTPUT: VOICE+SAT MODE

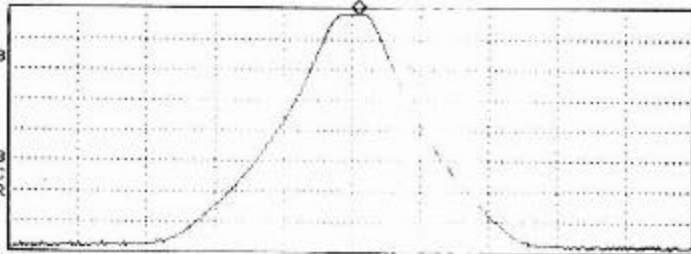
MODE DET: PEAK
MODE DET: PEAK QP AVG
MKR 894.010 MHz
47.57 dBm

LOG REF OFFST 51.5 dB
10 REF 49.5 dBm

dB/
ATN
10 dB

VA SB
SC FC
CORR

CENTER 894.000 MHz SPAN 1.000 MHz
#IF BW 30 kHz n/0 BW 30 Hz SNP 20.0 msec



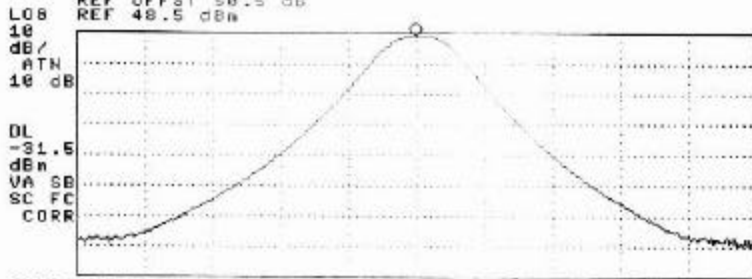
#2

18:47:02 SEP 14 1999
POWER OUTPUT (WIDEBAND DATA)

REF: DET1 PERK
REF: DET1 PEAK GP AVG
REF: 869.8388 MHz
47.68 dBm

#3

REF OFFST 50.5 dB
REF 48.5 dBm



CENTER 869.8400 MHz SPAN 500.0 kHz
#IF BW 30 kHz AVG BW 30 kHz SWP 20.0 nsec

12:02:24 SEP 14, 1993
POWER OUTPUT: (WIDEBAND DATA)

SCN DET: PEAK
SEAS DET: PEAK QP AVG
PKR 893.9663 MHz
47.21 dBm

#4

