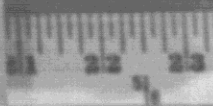
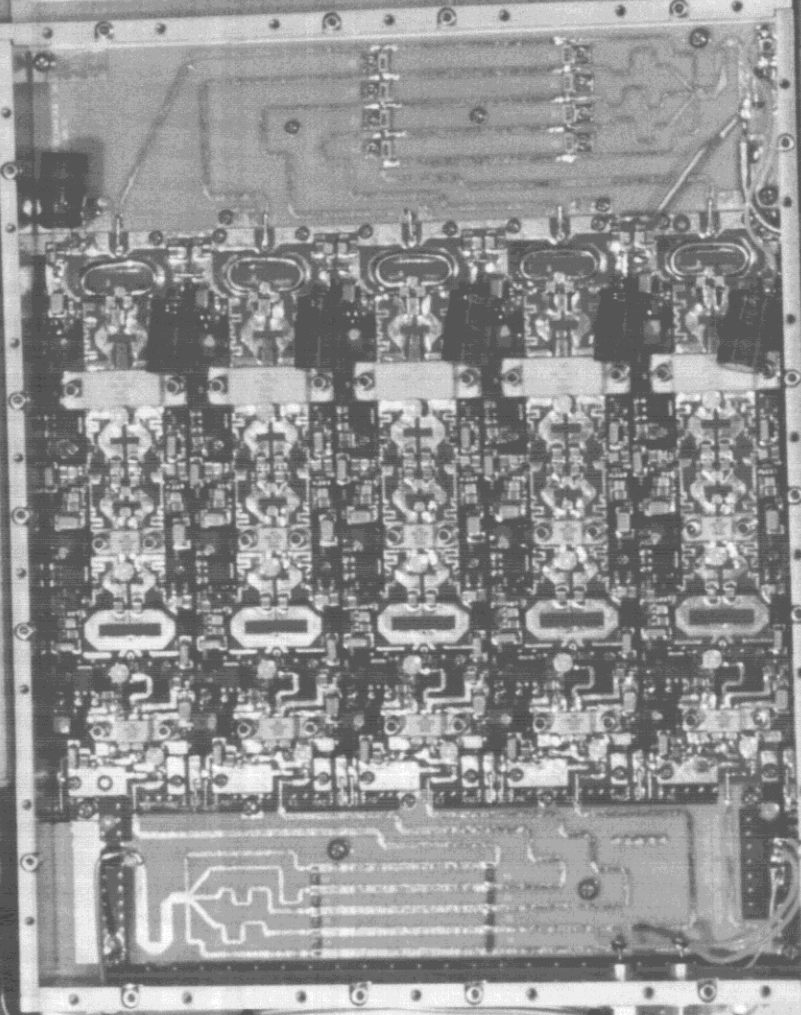


Powerwave Tech. 2-23-98
98E 6992



POWERWAVE TECHNOLOGIES OF STASSY500-00687

Powerwave Tech.2-23-98

98E 6992

PO-
EV

0FST3R55Y500-00565-

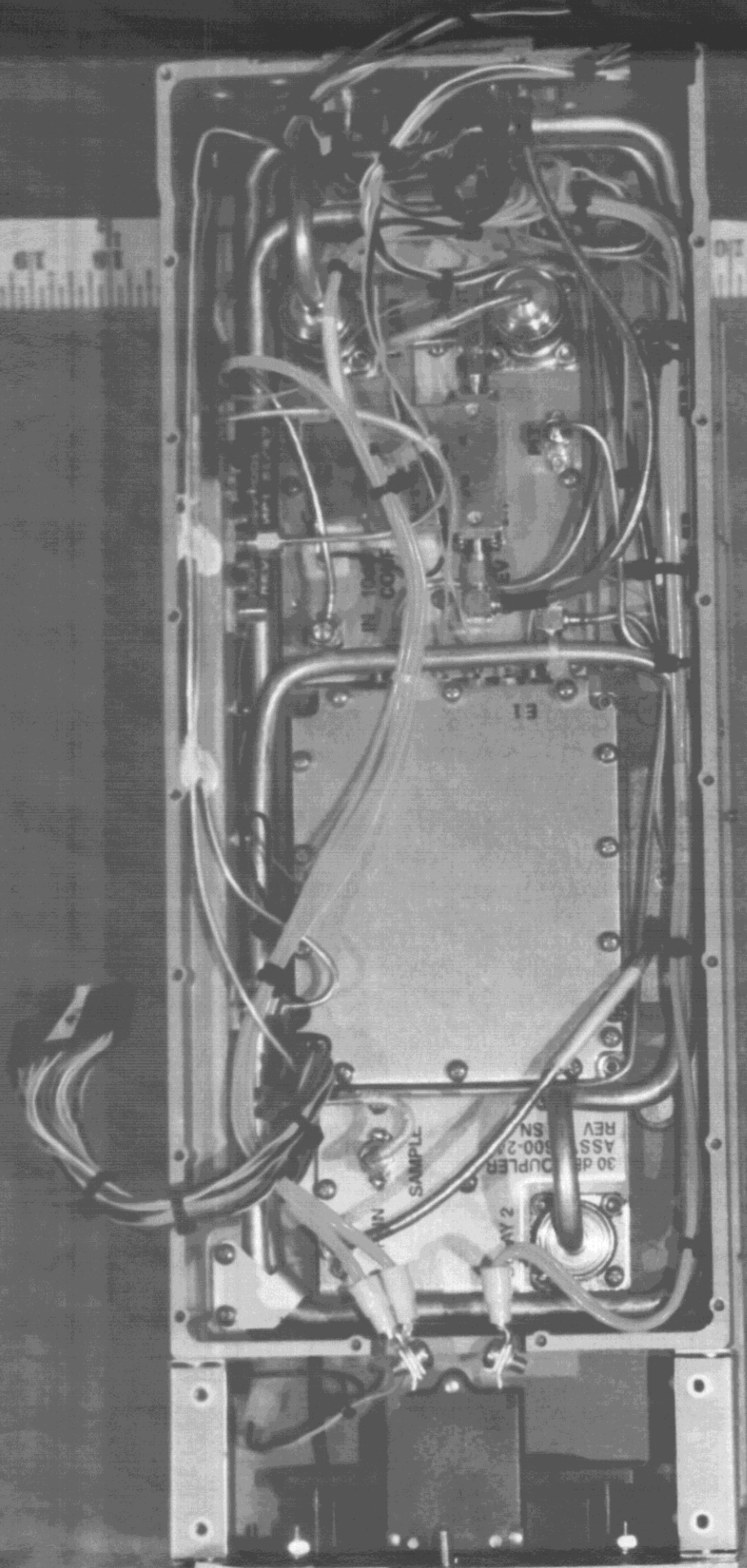
2.76
900-00022-001
CR1007888F3

Powerwave Tech.2-23-98

98E 6992

12 13 14 15 16 17 18 19 20 21

20 21 22 23 24 25 26 27 28 29 30



30 dB COUPLER
ASSN 600-23
REV SN

SAMPLE

WAY 2

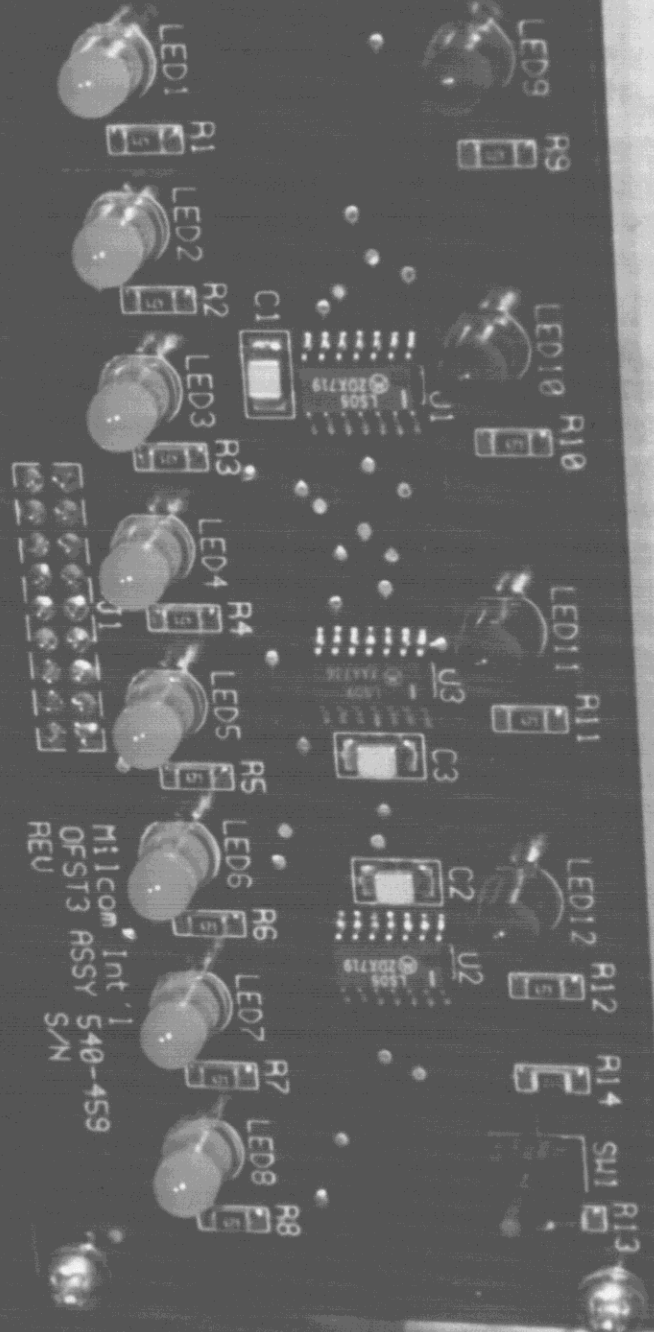
Powerwave Tech. 2-23-98
98E 6992

Powerwave Tech.2-23-98

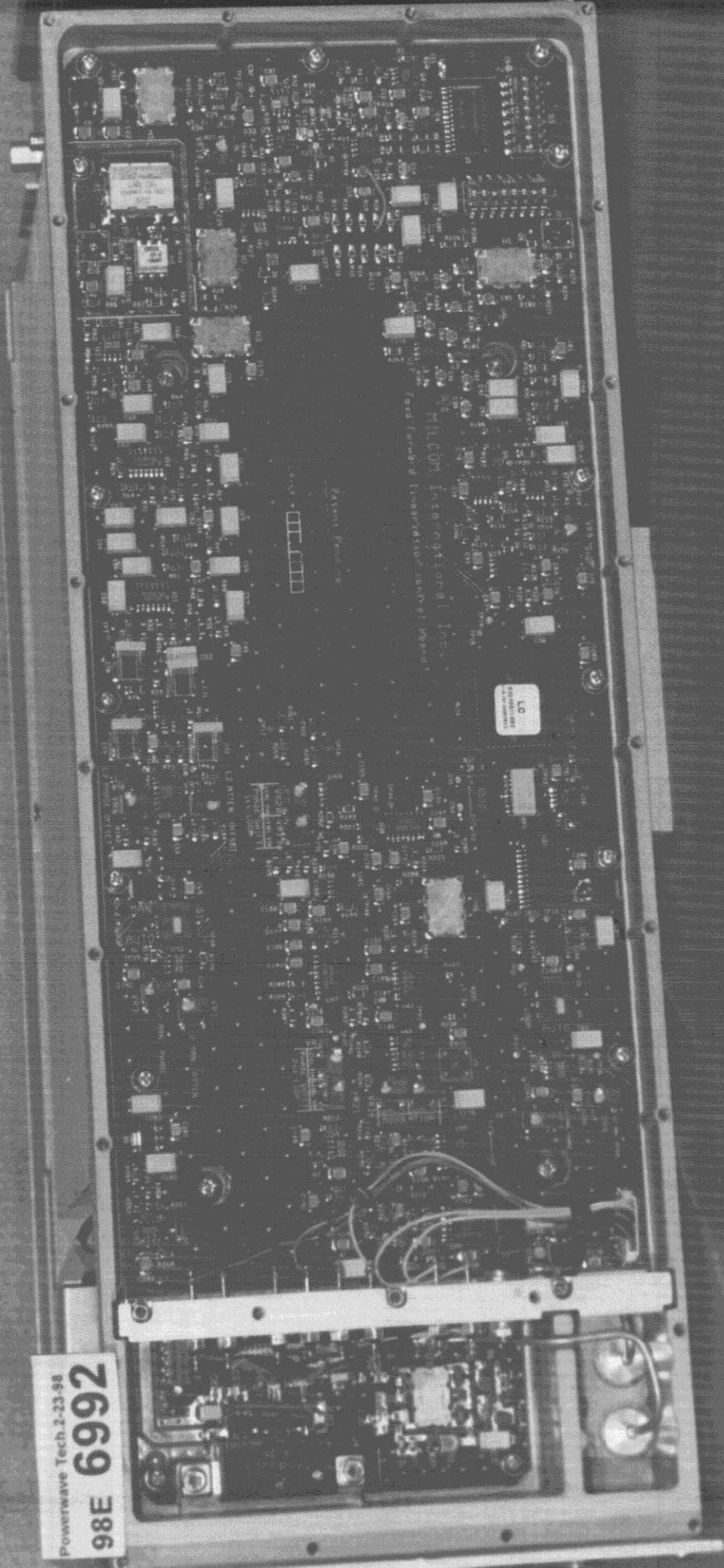
6992

98E 386

Milcom Int'l
OFST3 R55Y 540-459
REV



Powerwave Tech. 2-23-98
98E 6992



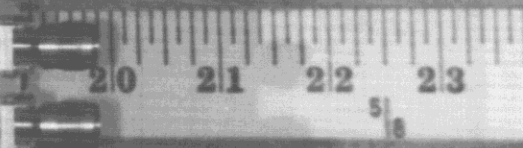
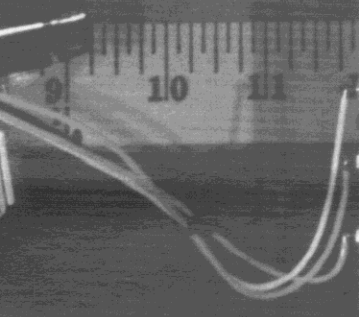
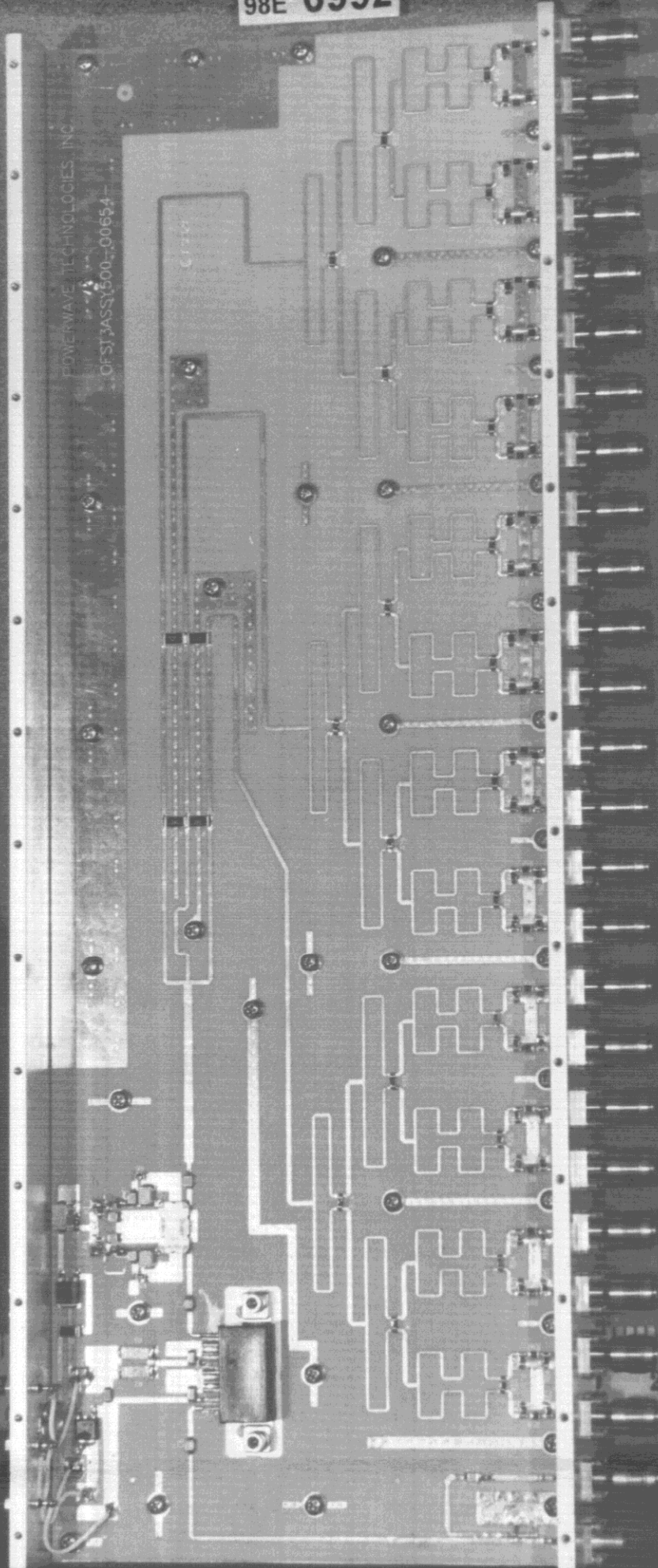
Passport Permit No. []

MILCOM International, Inc.
Fast Forward Installation

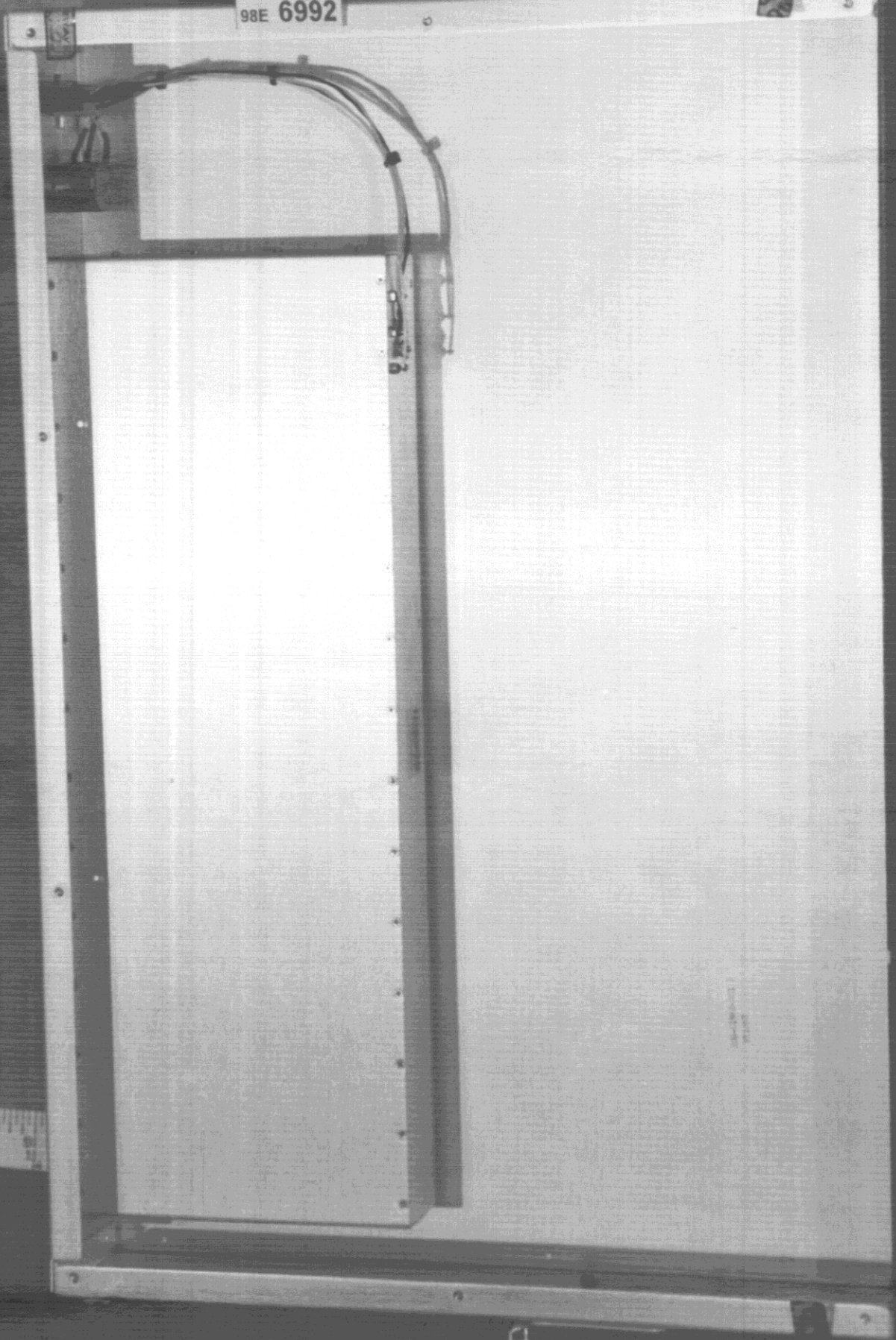
LC

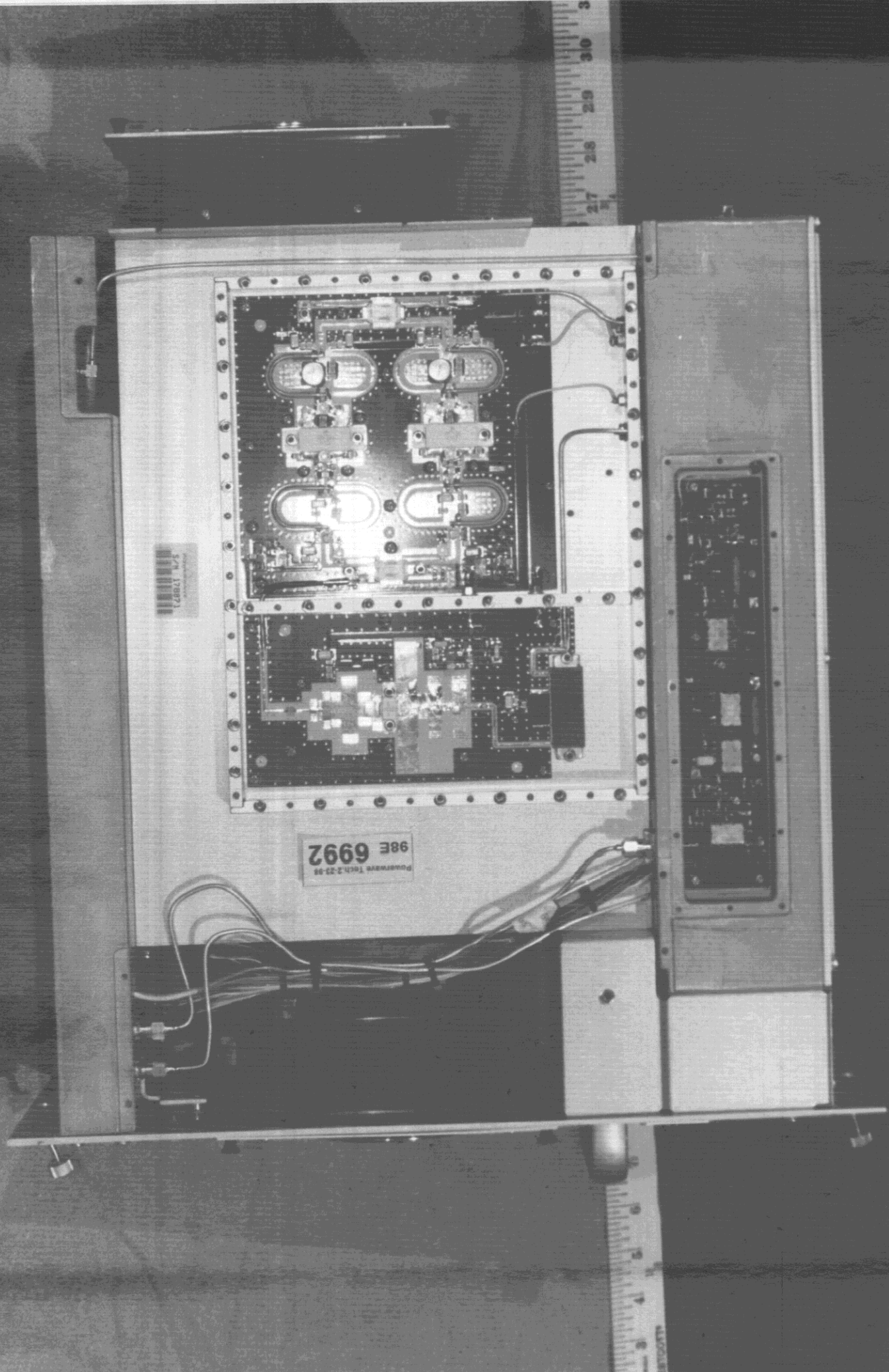
Powerwave Tech. 2-23-98
98E 6992

POWERWAVE TECHNOLOGIES, INC.
OF ST. LOUIS, MO 63103-00654



Powerline Tech. 2-25-88
98E 6992





178871

98E 6992
Powerware Tech. 2-23-88

27 28 29 30 31

3 4 5 6 7 8 9 10 11 12 13 14 15 16 17 18 19 20 21 22 23 24 25 26 27 28 29 30 31 32

128003
SAW/AV/1002

100-02237-006 A
ERC 07/50

POWERWAVE TECHNOLOGIES
OF ST 3/500-00711-

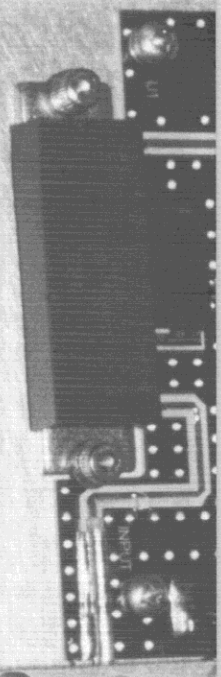
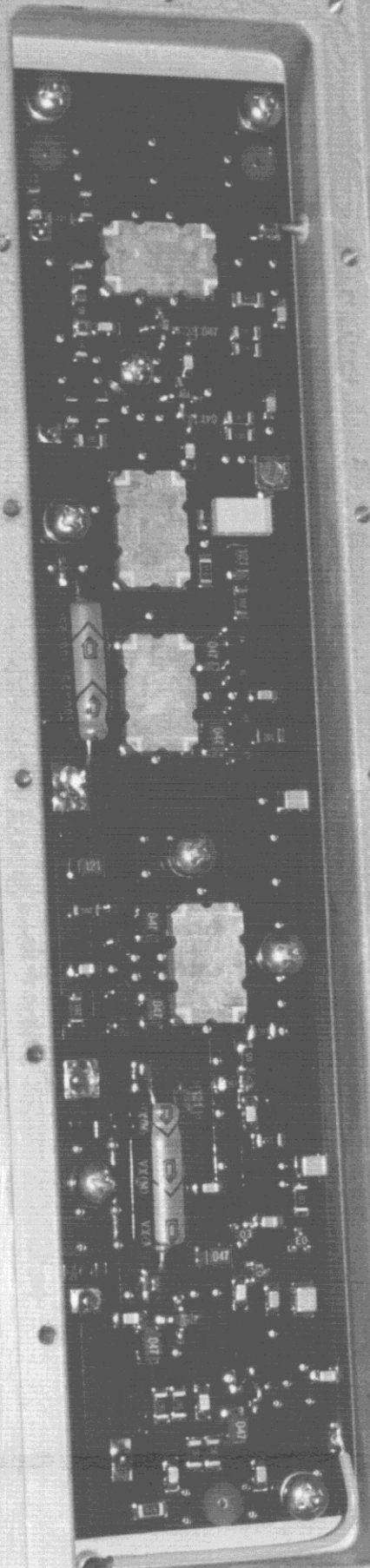
POWERWAVE TECHNOLOGIES
OF ST 3/500-00712-

Powerwave Tech. 2-23-98
98E 6992

IC IC

Powerwave Tech.2-23-98

98E 6992

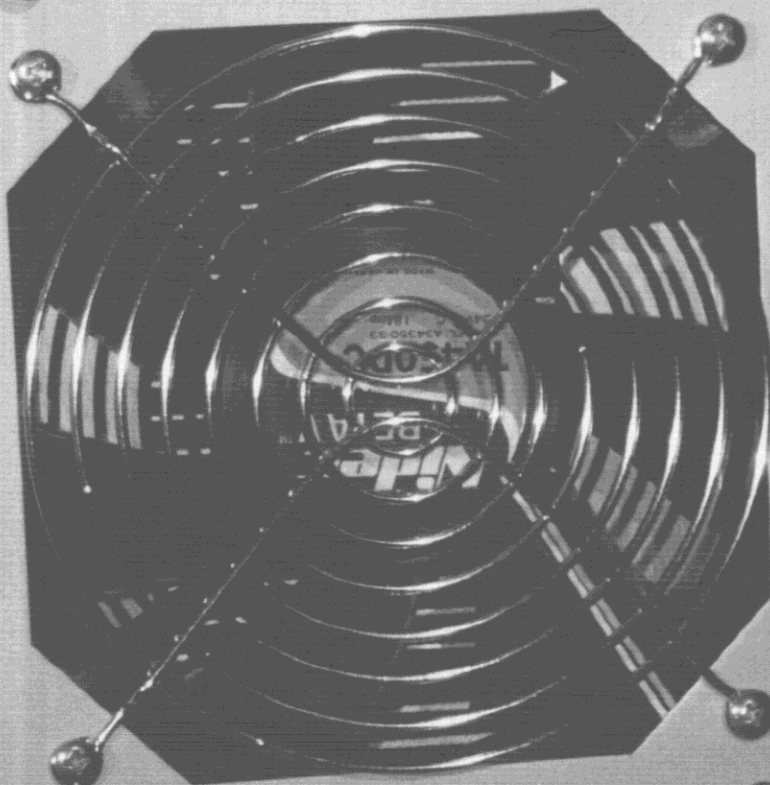


+42V

POWERWAVE
TECHNOLOGIES

MODEL: MCA9503-60
SERNO: 183473

FCC ID LABEL AREA
DATE: 02-11-98



100-02297-000 A
SERNO: 183473

-001P5
/50

Powerwave Tech 2-23-98
98E 6992

