

08-6260A06 REV A  
32-6260A06  
GE MDS LLC

Coilcraft  
222  
F

Coilcraft  
222  
F

SG8-60196  
80288400 B  
THAILAND  
005 SPANSON

1814  
48LC4M16A2  
-7E IT J  
P

2941042 2331062

ELF-6260A06SD9C  
Rev:A

QualLogic  
1728 DA  
QLP100  
-6PSN2561  
1724863F, 1 1648 DA

ANALOG  
DEVICES  
ADSP-BF537  
BB02-5A  
39535421 0.3  
#1734 SINGAPORE  
BLACK

ANALOG  
DEVICES  
AD9657ASZ  
#1807  
4146082.1

Rohde & Schwarz  
HX1180FNL 9A  
1049-C CHINA

Amphenol

HFM  
PX1003  
1741K27

320AC101  
4p611  
C958

MAX3161EEG  
1805  
WIXW

DR74  
100  
RCG168

L79583  
17351

J105  
U2003  
J105  
U2003

U601  
MAX9201  
270C

SHLD3

SHLD2

SHLD4

SHLD1

FL500

U701

U602

U603

U604

U605

U702

U606

U607

U608

U609

U703

U610

U611

U612

U613

U704

U614

U615

U616

U617

U705

U618

U619

U620

U621

U706

U622

U623

U624

U625

U707

U626

U627

U628

U629

U708

U630

U631

U632

U633

U709

U634

U635

U636

U637

U710

U638

U639

U640

U641

U711

U642

U643

U644

U645

U712

U646

U647

U648

U649

U713

U650

U651

U652

U653

U714

U654

U655

U656

U657

U715

U658

U659

U660

U661

U716

U662

U663

U664

U665

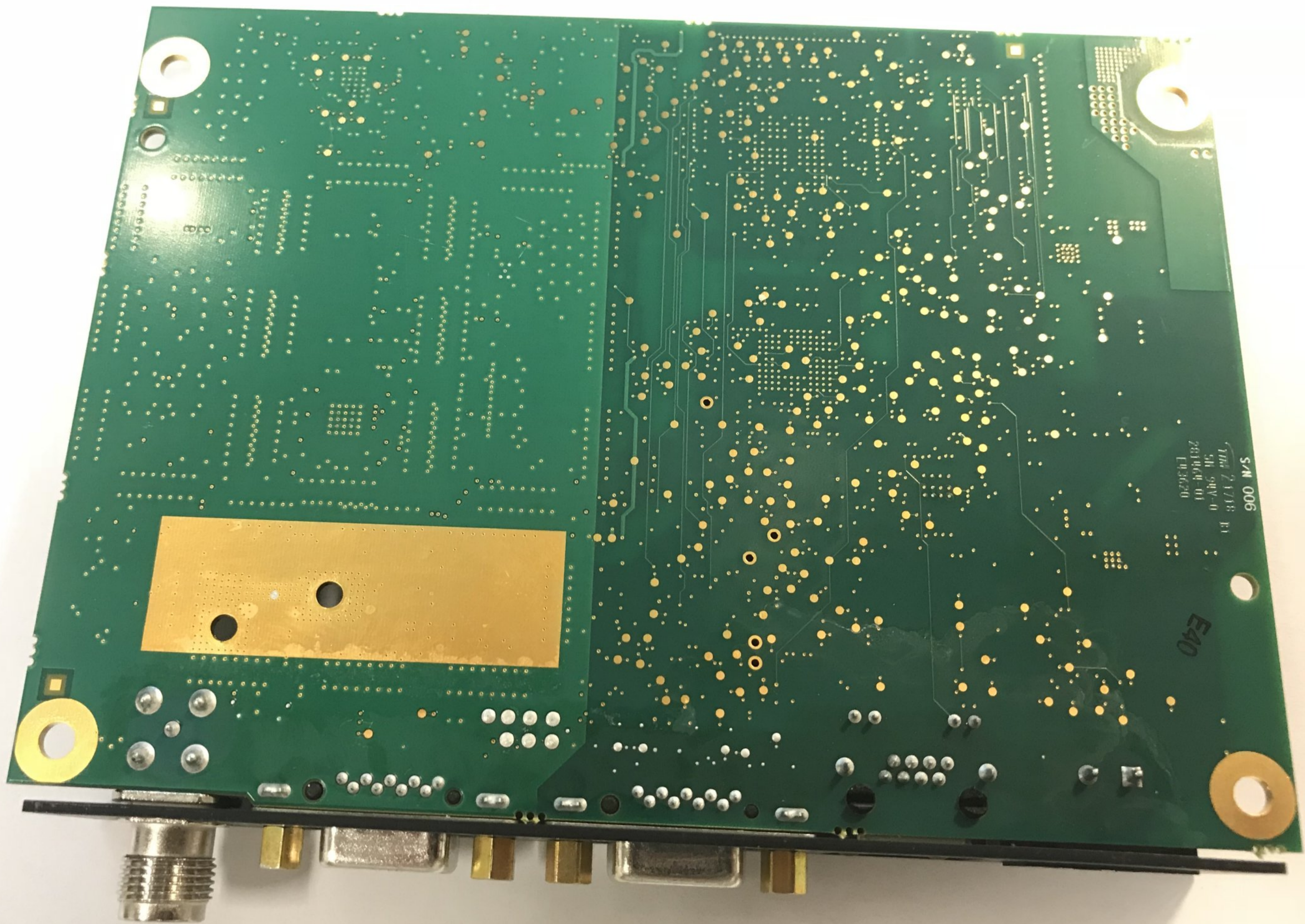
U717

U666

U667

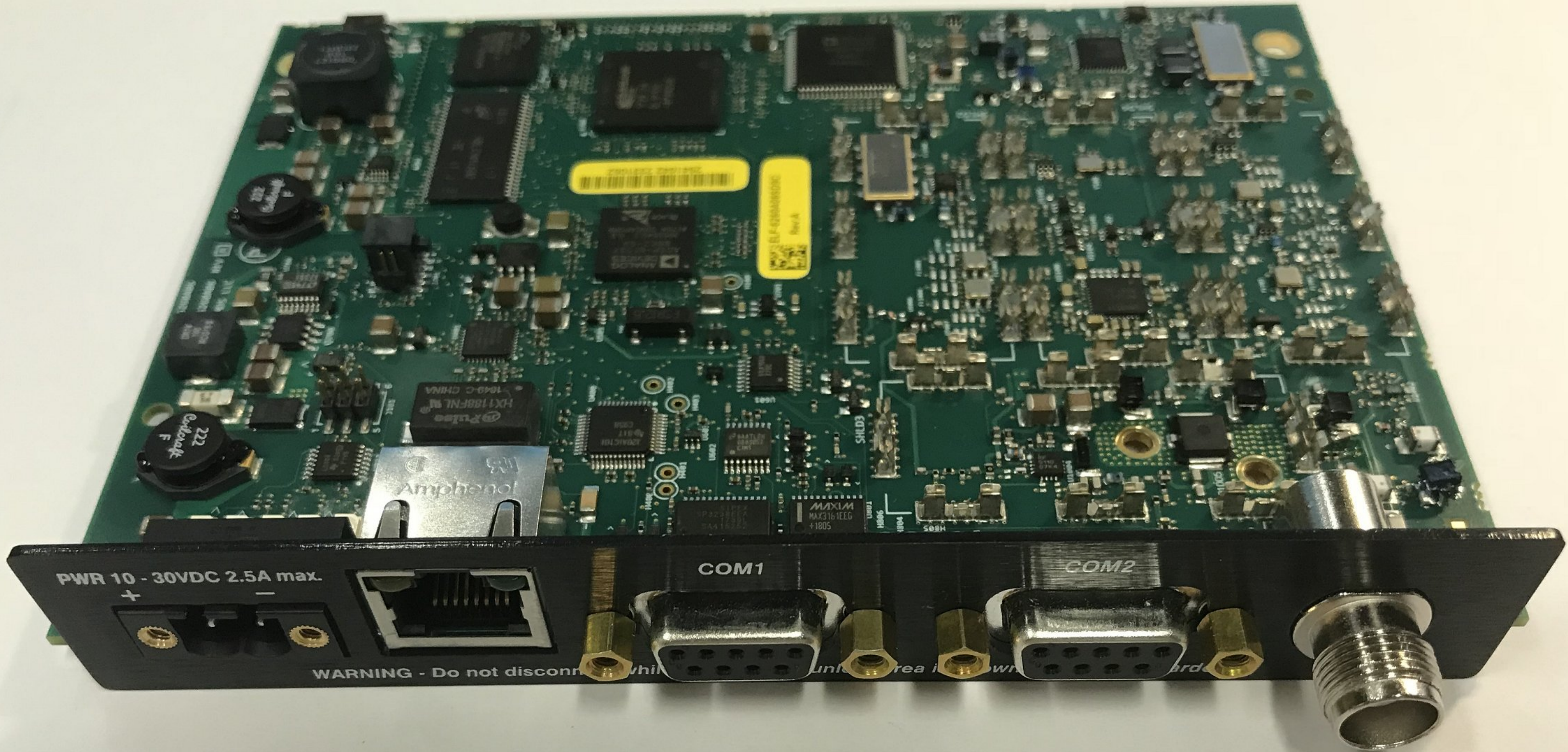
U668

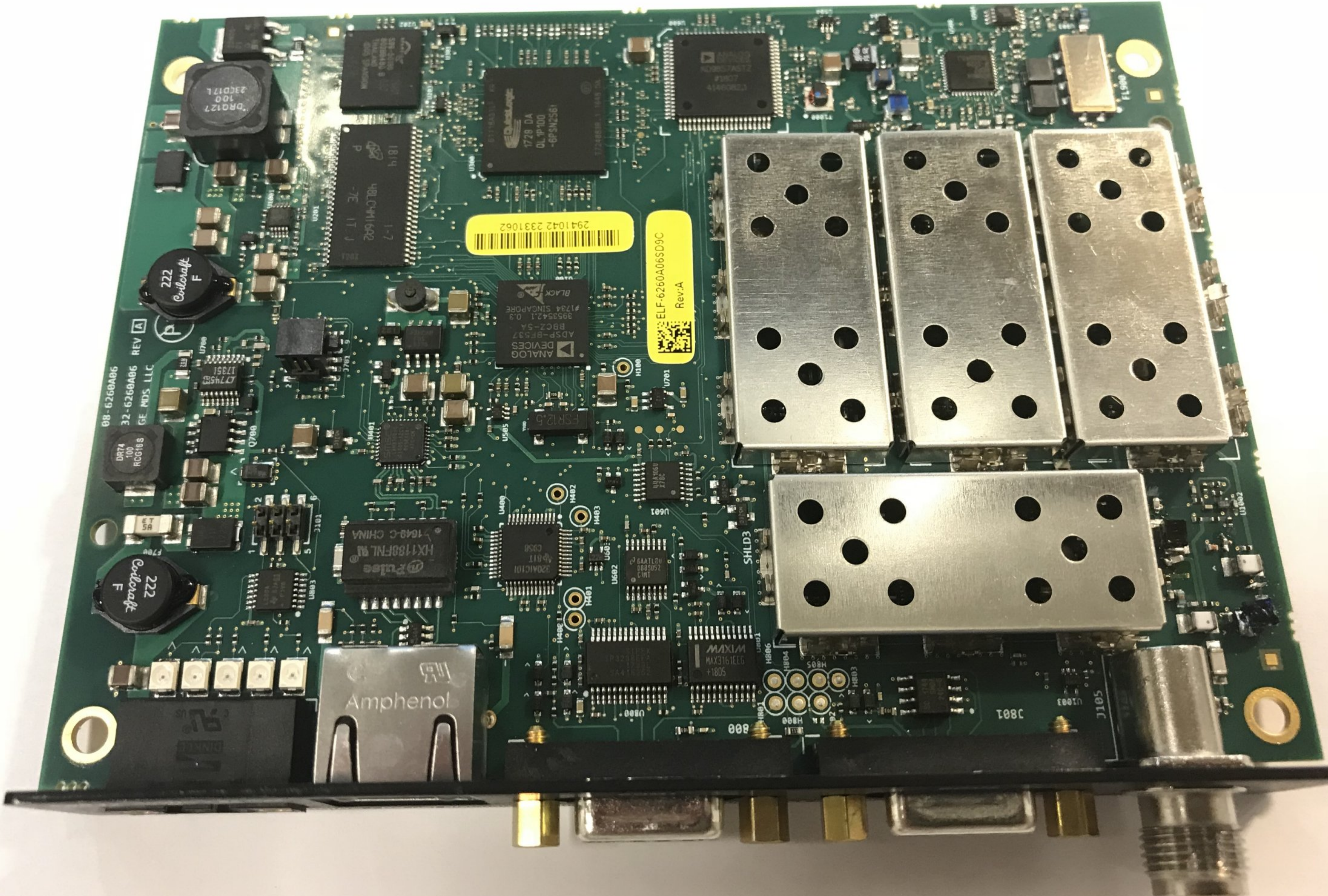
U669



54N 006  
Rev 2.1.13 B1  
31 94V-0  
201001-01  
EP3620

E40





08-6260A06  
32-6260A06 REV A  
GE MDS, LLC

222  
Coulcraft  
F

222  
Coulcraft  
F

2941042 2331062

ELF-6260A06SD9C  
Rev.A

1819  
VBL CPH1692  
-7E IT J

QualLogic  
1728 DA  
DL 1P100  
-6P SM2S61

ANALOG  
DEVICES  
ADSP-BF537  
B9CZ-5A  
39535421 09  
#1734 SINGAPORE  
BLACK

Pulse  
HX1180FNL 9A  
1643-C CHINA

320AC101  
C950

MAXIM  
MAX3161EXM  
+1805

Amphenol

J801

J105

U1003

U1002

