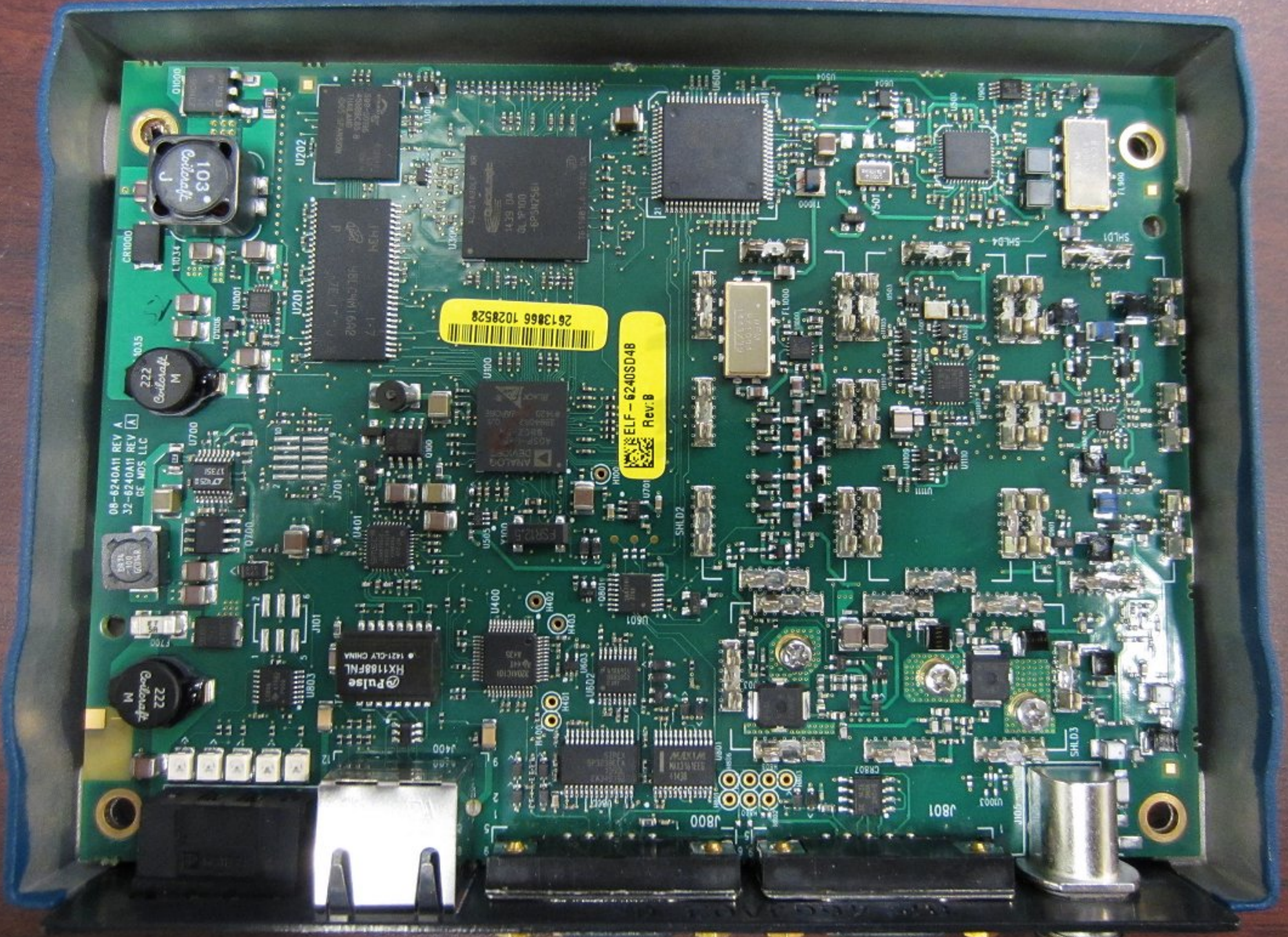


E46



08-6240A11 REV A
32-6240A11 REV A
GE MOS LLC

103
Coilcraft

222
Coilcraft
M

222
Coilcraft
M

2613866 1028528

ELF-6240SD4B
Rev: B

Pulse
HX1188FNL
1421-CLY CHINA

J801

J800

SHLD3

SHLD1

SHLD4

SHLD2

SHLD5

SHLD6

SHLD7

SHLD8

SHLD9

SHLD10

SHLD11

SHLD12

SHLD13

SHLD14

SHLD15

SHLD16

SHLD17

SHLD18

SHLD19

SHLD20

SHLD21

SHLD22

SHLD23

SHLD24

SHLD25

SHLD26

SHLD27

SHLD28

SHLD29

SHLD30

SHLD31

SHLD32

SHLD33

SHLD34

SHLD35

SHLD36

SHLD37

SHLD38

SHLD39

SHLD40

SHLD41

SHLD42

SHLD43

SHLD44

SHLD45

SHLD46

SHLD47

SHLD48

SHLD49

SHLD50

SHLD51

SHLD52

SHLD53

SHLD54

SHLD55

SHLD56

SHLD57

SHLD58

SHLD59

SHLD60

SHLD61

SHLD62

SHLD63

SHLD64

SHLD65

SHLD66

SHLD67

SHLD68

SHLD69

SHLD70

SHLD71

SHLD72

SHLD73

SHLD74

SHLD75

SHLD76

SHLD77

SHLD78

SHLD79

SHLD80

SHLD81

SHLD82

SHLD83

SHLD84

SHLD85

SHLD86

SHLD87

SHLD88

SHLD89

SHLD90

SHLD91

SHLD92

SHLD93

SHLD94

SHLD95

SHLD96

SHLD97

SHLD98

SHLD99

SHLD100

SHLD101

SHLD102

SHLD103

SHLD104

SHLD105

SHLD106

SHLD107

SHLD108

SHLD109

SHLD110

SHLD111

SHLD112

SHLD113

SHLD114

SHLD115

SHLD116

SHLD117

SHLD118

SHLD119

SHLD120

SHLD121

SHLD122

SHLD123

SHLD124

SHLD125

SHLD126

SHLD127

SHLD128

SHLD129

SHLD130

SHLD131

SHLD132

SHLD133

SHLD134

SHLD135

SHLD136

SHLD137

SHLD138

SHLD139

SHLD140

SHLD141

SHLD142

SHLD143

SHLD144

SHLD145

SHLD146

SHLD147

SHLD148

SHLD149

SHLD150

SHLD151

SHLD152

SHLD153

SHLD154

SHLD155

SHLD156

SHLD157

SHLD158

SHLD159

SHLD160

SHLD161

SHLD162

SHLD163

SHLD164

SHLD165

SHLD166

SHLD167

SHLD168

SHLD169

SHLD170

SHLD171

SHLD172

SHLD173

SHLD174

SHLD175

SHLD176

SHLD177

SHLD178

SHLD179

SHLD180

SHLD181

SHLD182

SHLD183

SHLD184

SHLD185

SHLD186

SHLD187

SHLD188

SHLD189

SHLD190

SHLD191

SHLD192

SHLD193

SHLD194

SHLD195

SHLD196

SHLD197

SHLD198

SHLD199

SHLD200

SHLD201

SHLD202

SHLD203

SHLD204

SHLD205

SHLD206

SHLD207

SHLD208

SHLD209

SHLD210

SHLD211

SHLD212

SHLD213

SHLD214

SHLD215

SHLD216

SHLD217

SHLD218

SHLD219

SHLD220

SHLD221

SHLD222

SHLD223

SHLD224

SHLD225

SHLD226

SHLD227

SHLD228

SHLD229

SHLD230

SHLD231

SHLD232

SHLD233

SHLD234

SHLD235

SHLD236

SHLD237

SHLD238

SHLD239

SHLD240

SHLD241

SHLD242

SHLD243

SHLD244

SHLD245

SHLD246

SHLD247

SHLD248

SHLD249

SHLD250

SHLD251

SHLD252

SHLD253

SHLD254

SHLD255

SHLD256

SHLD257

SHLD258

SHLD259

SHLD260

SHLD261

SHLD262

SHLD263

SHLD264

SHLD265

SHLD266

SHLD267

SHLD268

SHLD269

SHLD270

SHLD271

SHLD272

SHLD273

SHLD274

SHLD275

SHLD276

SHLD277

SHLD278

SHLD279

SHLD280

SHLD281

SHLD282

SHLD283

SHLD284

SHLD285

SHLD286

SHLD287

SHLD288

SHLD289

SHLD290

SHLD291

SHLD292

SHLD293

SHLD294

SHLD295

SHLD296

SHLD297

SHLD298

SHLD299

SHLD300

SHLD301

SHLD302

SHLD303

SHLD304

SHLD305

SHLD306

SHLD307

SHLD308

SHLD309

SHLD310

SHLD311

SHLD312

ELF - 6240SD4B
Rev: B

U600

FL1000

Y501

U500

RFM
PX1004
1443X39

FL900

SHLD2

SHLD4

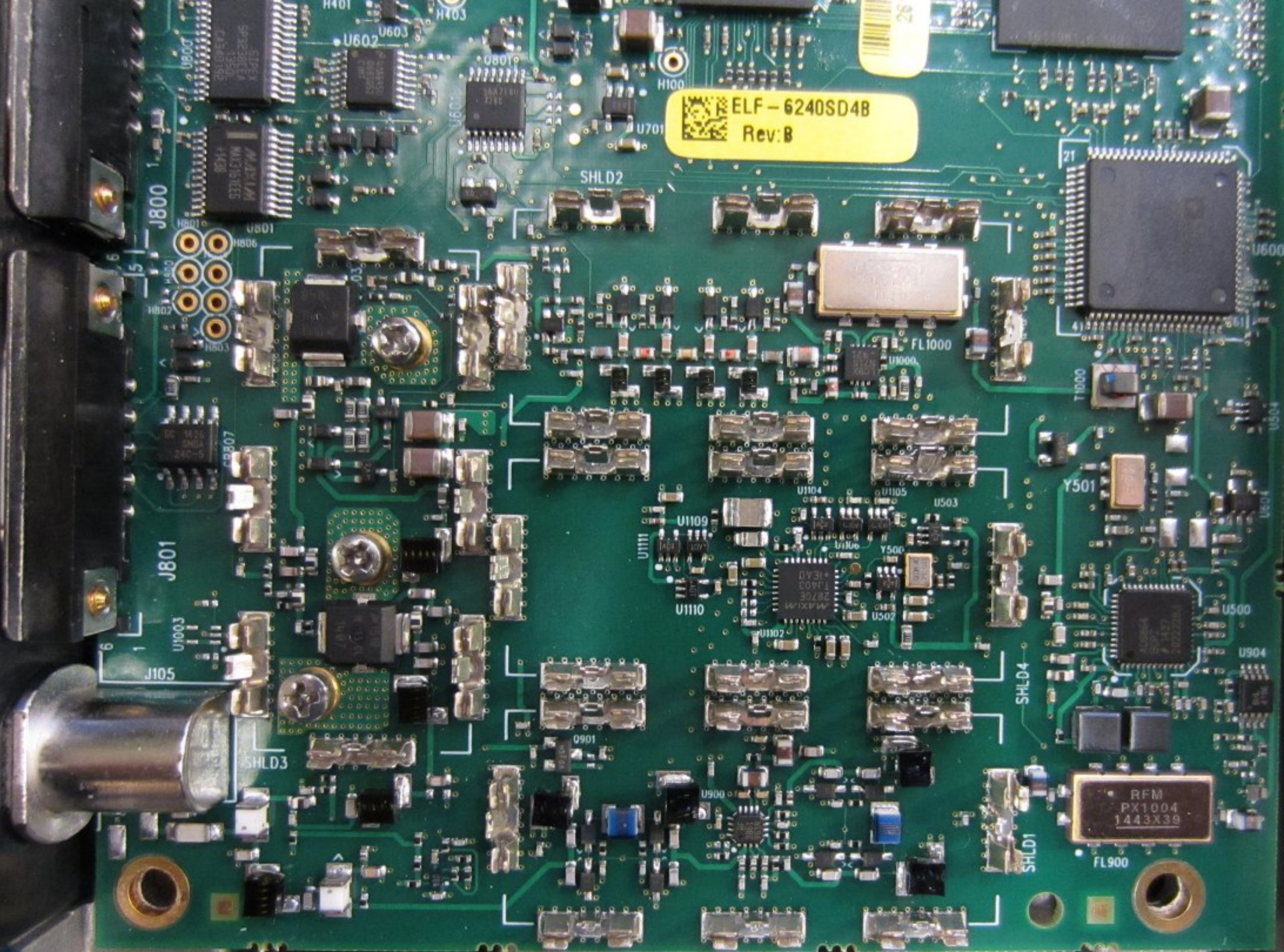
SHLD1

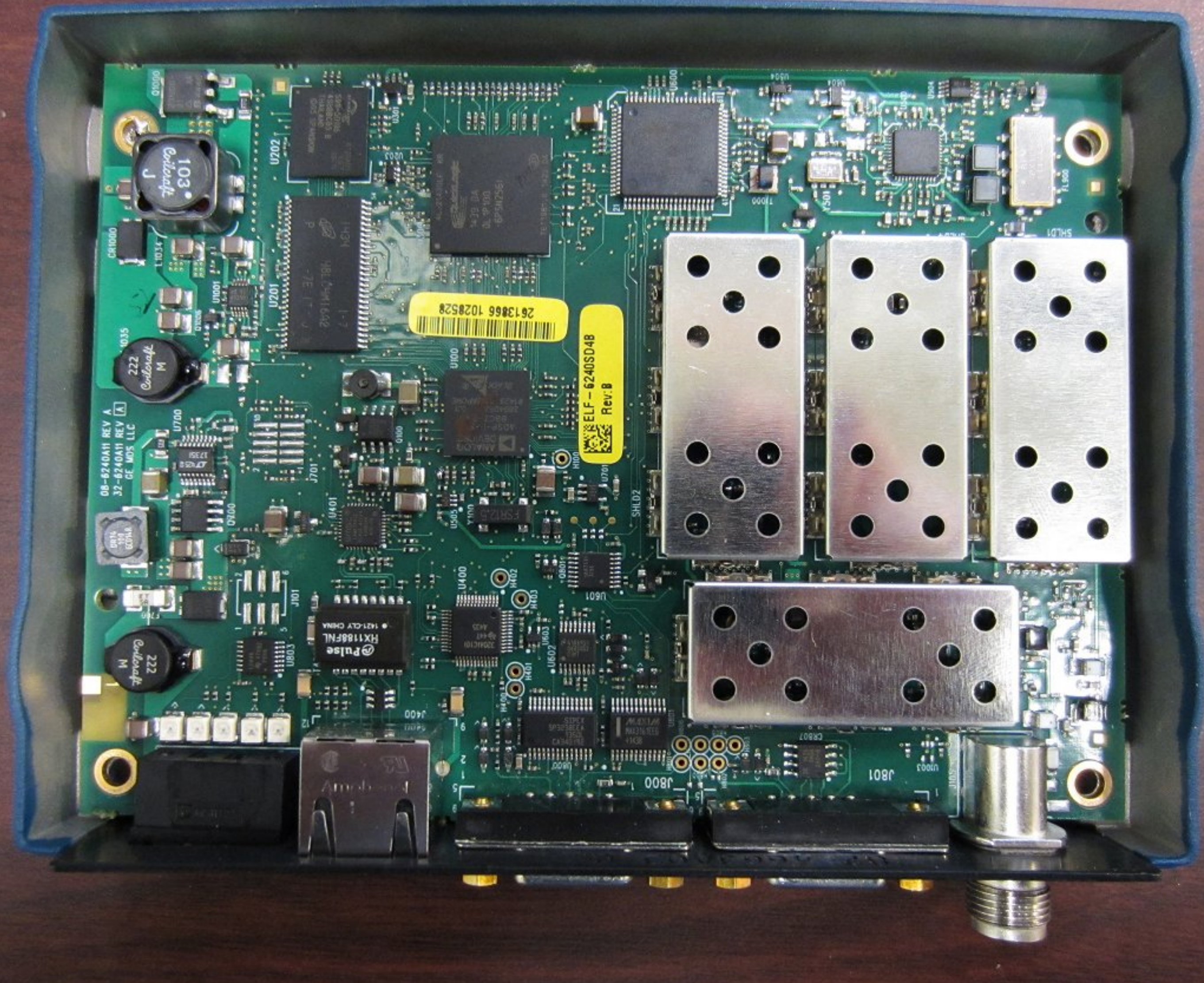
J800

J801

J105

SHLD3





08-6240A11 REV A
32-6240A11 REV A
GE MOS LLC

2613866 1028528

ELF-6240SD4B
Rev: B

Pulse
FX1186FNL
1421-CLY CHINA

103
Coulcraft

222
Coulcraft
M

222
Coulcraft
M

USB

J801

U803

J800

SHLD2

SHLD1

FL800

