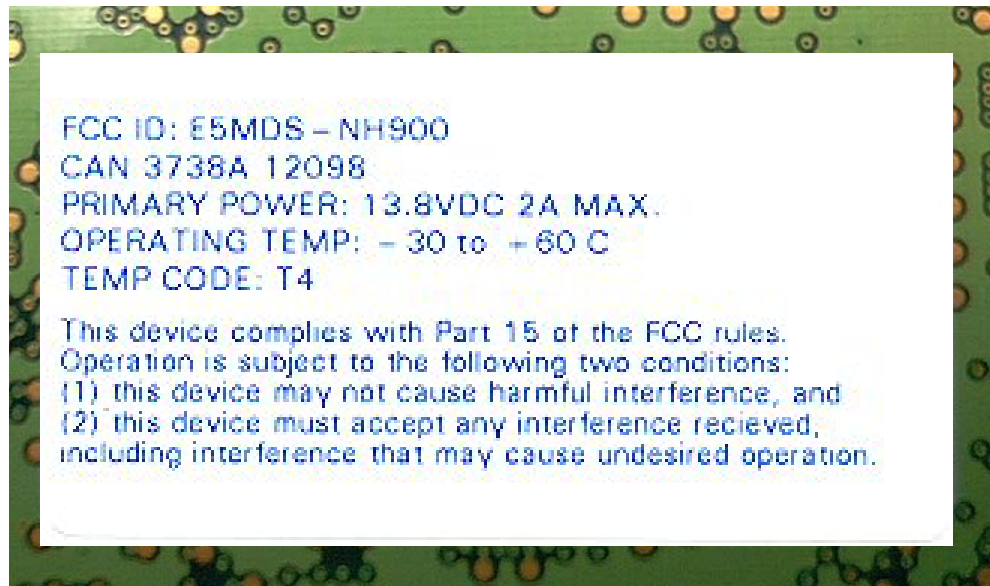
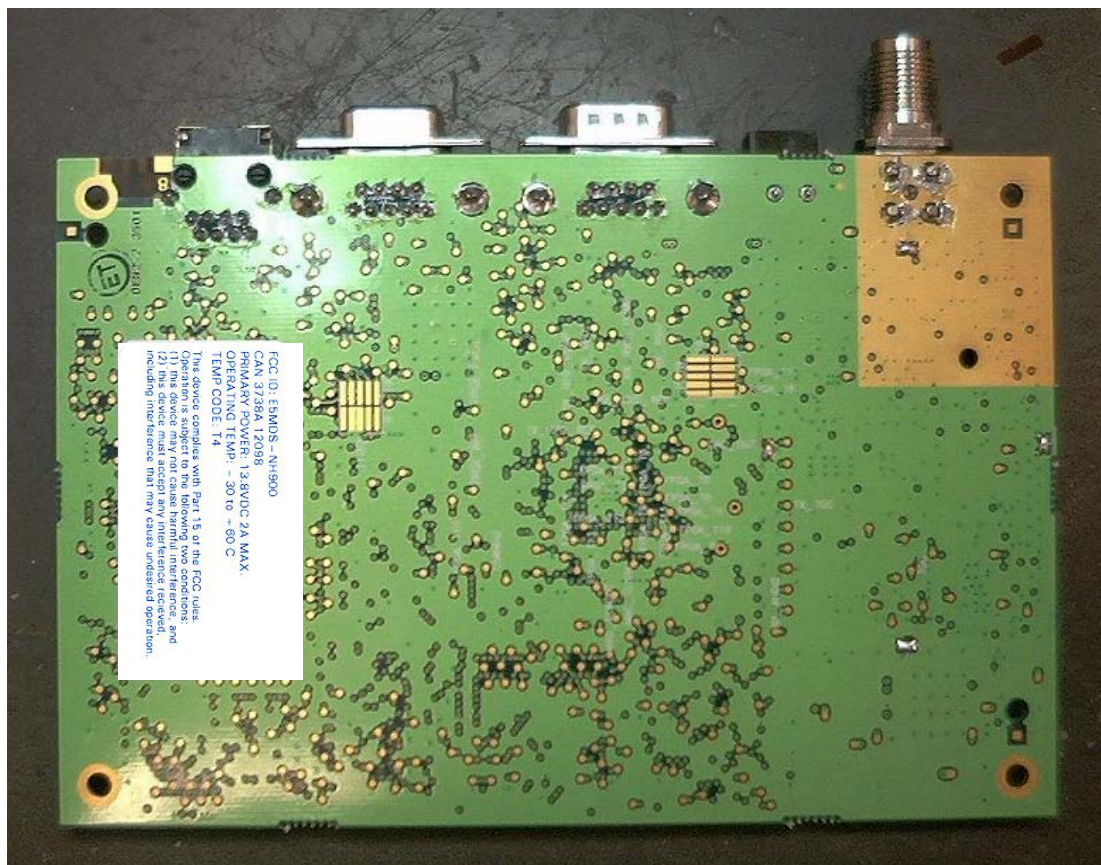


## FCC ID Label




## Location of Label on Module




## Exterior Label for Enclosed Module

**MDS** MDS 900 SPREAD SPECTRUM TRANSCEIVER  
iNET Access Point

---

  
CONFIG: INETN9A1N0FN0NN

  
SN# 1234567

REV: XX    JOB: 50000    DEV: 980000

CONTAINS  
FCC ID: E5MDS-NH900  
CAN 3738A 1209B  
PRIMARY POWER:  
13.8VDC 2A MAX.  
OPERATING TEMP.:  
-30 to +60 C  
TEMP CODE: T4

This device complies with Part 15 of the FCC rules. Operation is subject to the following two conditions: (1) this device may not cause harmful interference, and (2) this device must accept any interference received, including interference that may cause undesired operation.

