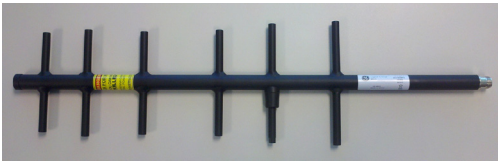




Z2336, 902-960 MHz Yagi Antenna



Z2336



BWC1001 MOUNT

This yagi has been optimized using a genetic algorithm to achieve superior performance over the entire 900 MHz frequency band. It features solid 3/8" elements attached to a seamless aluminum boom with 360° welds, and are finished with a black polyester powder coating. A solid aluminum mounting bracket allows for either vertical or horizontal polarization. The sturdy construction and advanced design provides outstanding durability and superior performance in all weather conditions.

Features

- Broadband performance with no tuning required
- Fully enclosed, low loss feed system
- 360° welds at element and boom interface
- Solid aluminum mounting clamps with stainless steel hardware

Technical Data	
Max Power:	150 watts
Polarization:	Vertical, Horizontal
Nominal Impedance:	50 ohms
VSWR:	1.5 typical, 2.0 max
Front to Back Ratio:	15 dB
Connector:	N jack female
Mounting Method:	Mast mount, BWC1001 included
Mount Material:	Electrogalvanized steel (RoHS Compliant)

RF/Electrical Specifications					
GE Part Number	PCTEL Part Number	Frequency Range	Nominal Gain	Azimuth Beamwidth @ ½ Power	Elevation Beamwidth @ ½ Power
97-3194A14	Z2336	902-690 MHz	10 dBd	50°	45°

Mechanical Specifications					
GE Part Number	PCTEL Part Number	Temperature Range	Dimensions (L X W)	Weight (Mass)	Wind Survivability
97-3194A14	Z2336	-40° C to +85° C	23.6" x 6.2" (59.9 x 15.7 mm)	1.1 lbs (0.5 kg)	200 mph (no ice) 110 mph (0.5" ice build-up)