

FCC label

R115 Power Control Adjustment

**DC power input conn.
(hidden)**

**RF Output
Conn.**

**J101 Power control
Conn.**

**RF Input
Conn.**

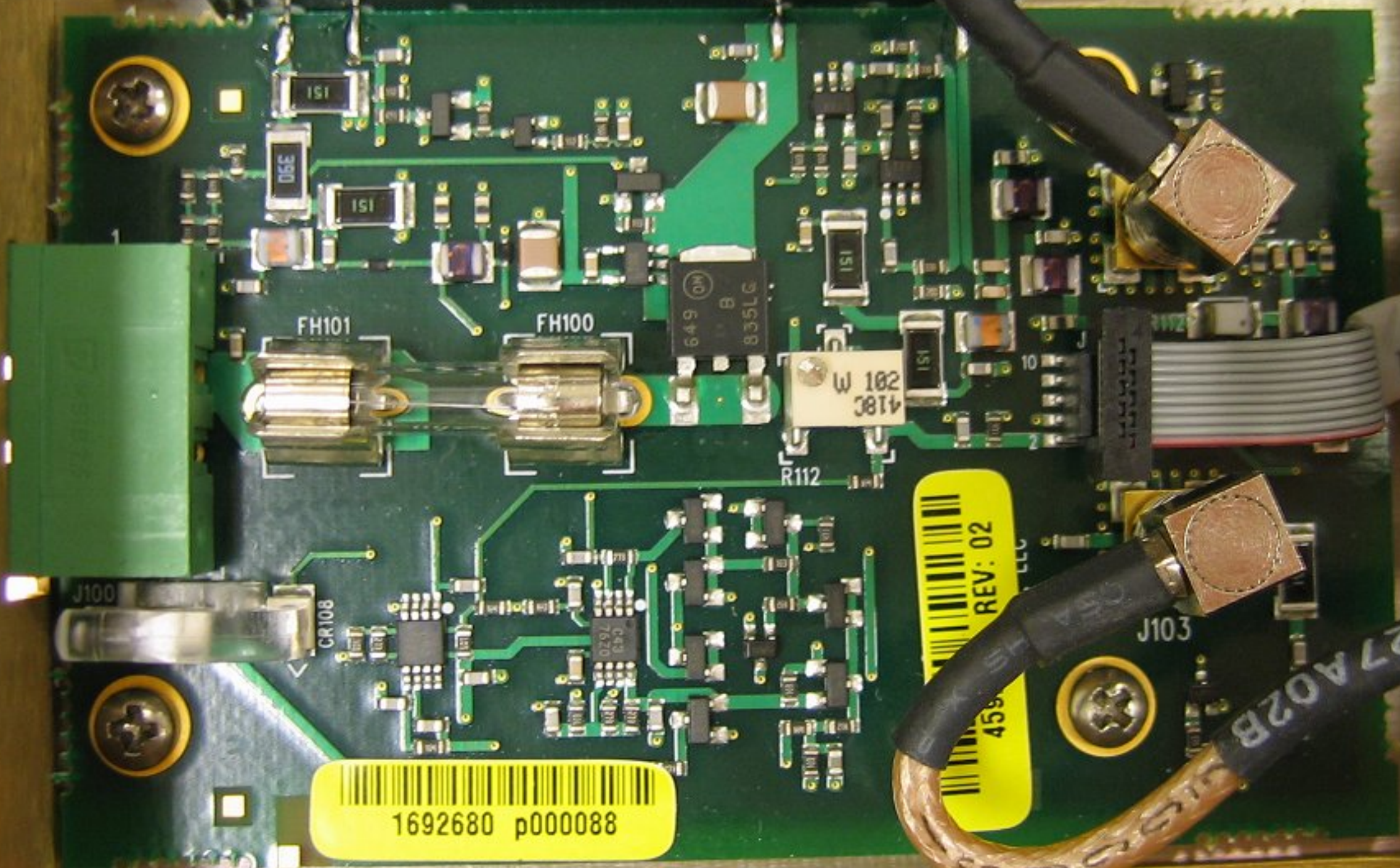
62-4172A01 REV. 1.3

4

5/29

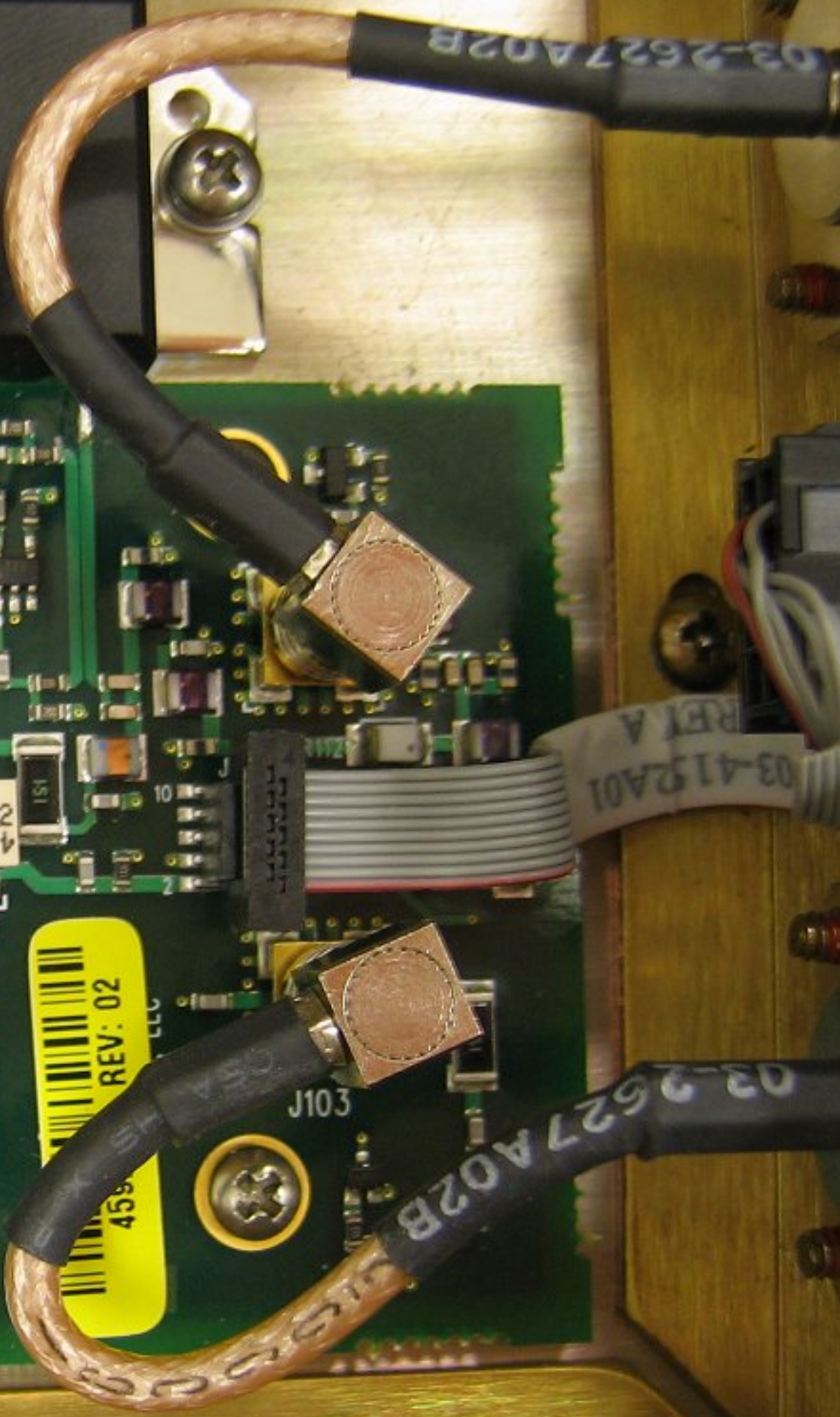
03-412A02 REV. 02

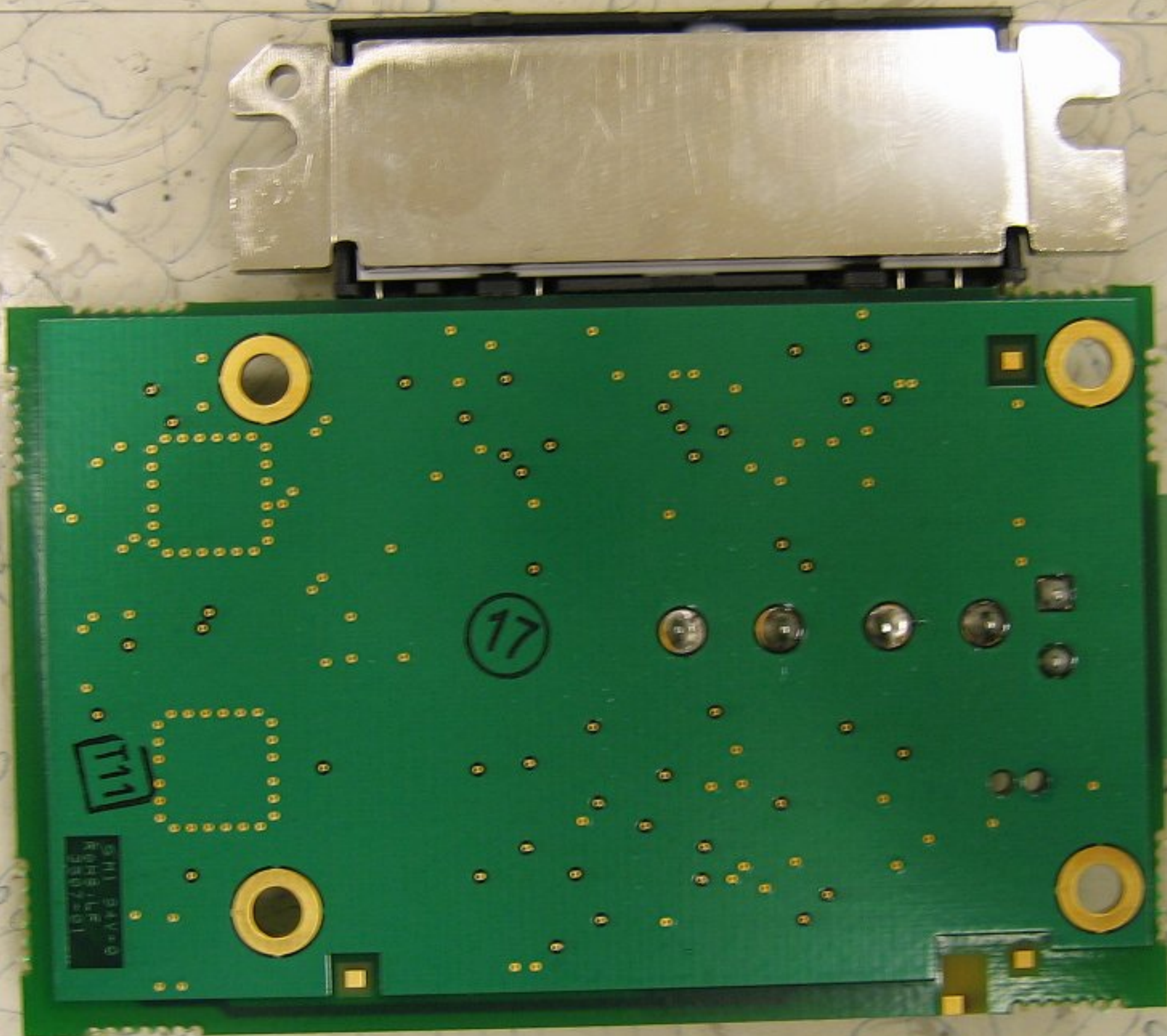
RA30H2127M
042AA -B JAPAN



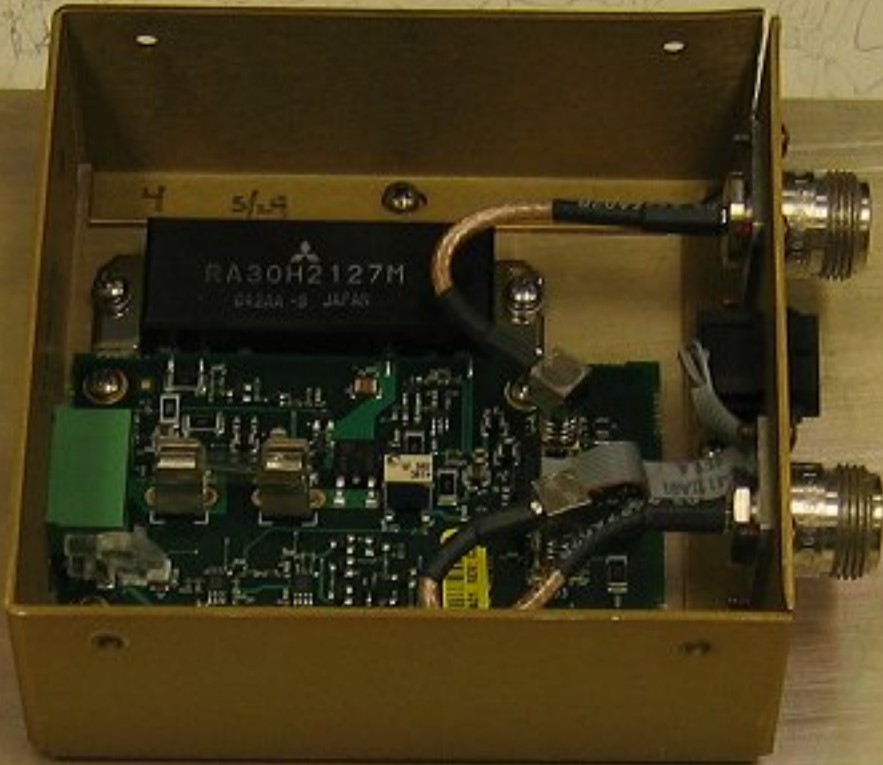
1692680 p000088

REV: 02





MDS MDS eNet 220 - REPEATER AMPLIFIER
MDS-10
SERIAL NUMBER: 13 000 00 0001
MDS-10 Rev. 1.0
DATE OF MANUFACTURE: 08/01/00
MDS-10
This device complies with Part 15 of the FCC rules. Operation is subject to the following two conditions: (1) this device may not cause harmful interference, and (2) this device must accept any interference received, including interference that may cause undesired operation.



B2-4172A01REV. D

120V
50/60 Hz
1.5A
120V
50/60 Hz
1.5A



RA30H 2127M
027 XX JAPAN

1261662 170423

4171A01 REV. 01

MPT LCM
AMPLIFIER
22-4171A
08-4171A REV. A
MICROWAVE SYSTEMS