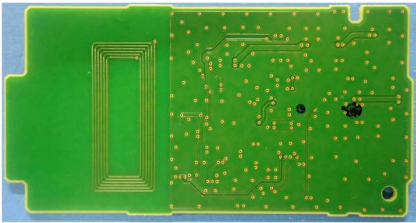
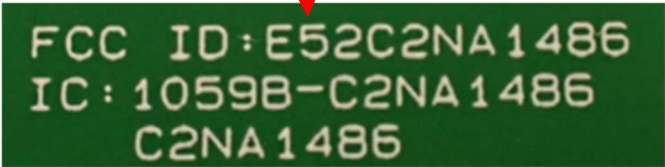
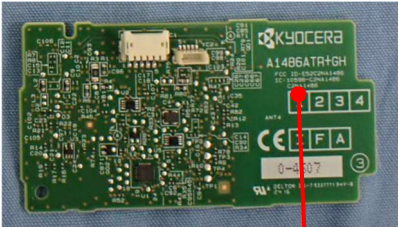


ID Location on the RFID Module

2024, August 5

Kyocera Document Solutions Inc.

C2NA1486



ID Location on the Multi-Function Printer



TASKalfa MZ7001i

MFP
120 V~ 60 Hz 12.0 A



FC

Disconnect all power supply cords
from the entire system
before disassembling.

Débranchez tous les cordons
d'alimentation de l'ensemble du
système avant de les démonter.

Contains FCC ID :
E52C2NA1486

Contains IC :
1059B-C2NA1486

This device complies with Part 15 of
the FCC Rules and RSS-Gen of IC Rules.
Operation is subject to the following
two conditions : (1) This device may
not cause harmful interference and (2)
this device must accept any
interference received, including
interference that may cause undesired
operation.

CAN ICES-3B/NMB-3B

Complies with FDA performance
standards for laser products except for
deviations pursuant to Laser Notice
No. 50, dated June 24, 2007.

KYOCERA Document Solutions Inc.
2-28, 1-Chome, Tamatsukuri,
Chuo-ku, Osaka, Japan
Designed in Japan / Assembled in China
>ABS<