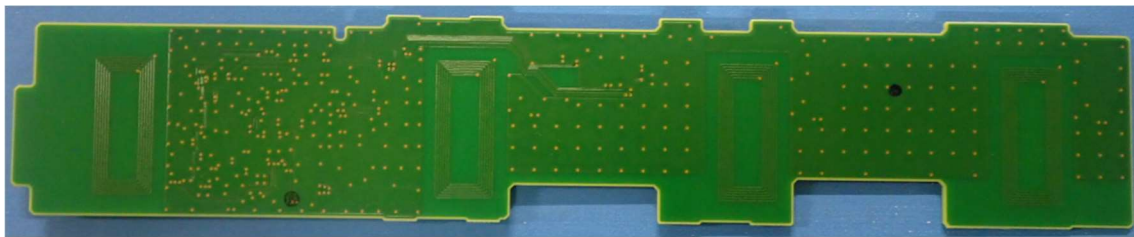
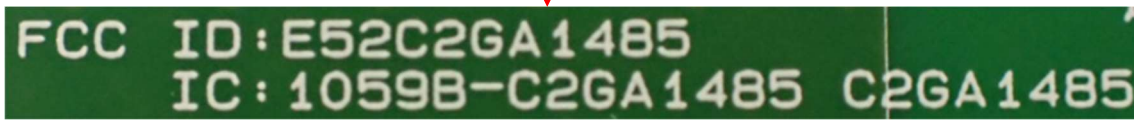
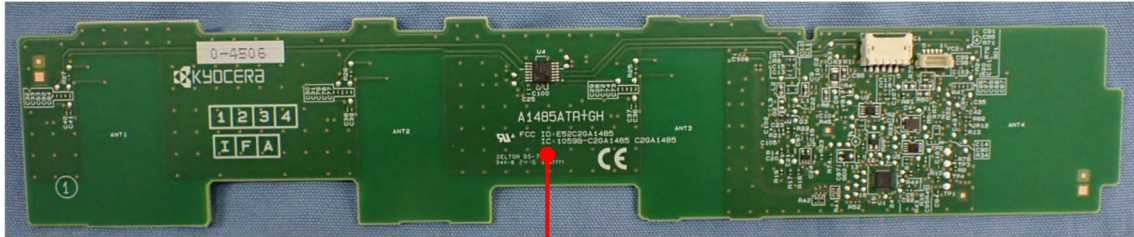


## ID Location on the RFID Module

2024, August 05

Kyocera Document Solutions Inc.

### C2GA1485




**ID Location on the Multi-Function Printer**



**TASKalfa MZ7001ci**

MFP

120 V ~ 60 Hz 16.0 A



FC

CUS

Disconnect all power supply cords from the entire system before disassembling.

Débranchez tous les cordons d'alimentation de l'ensemble du système avant de les démonter.

Contains FCC ID :

E52C2GA1485

Contains IC :

1059B-C2GA1485

This device complies with Part 15 of the FCC Rules and RSS-Gen of IC Rules. Operation is subject to the following two conditions : (1) This device may not cause harmful interference and (2) this device must accept any interference received, including interference that may cause undesired operation.

CAN ICES-3B/NMB-3B

Complies with FDA performance standards for laser products except for deviations pursuant to Laser Notice No. 50, dated June 24, 2007.

KYOCERA Document Solutions Inc.

2-28, 1-Chome, Tamatsukuri,

Chuo-ku, Osaka, Japan

Designed in Japan / Assembled in China

>ABS<