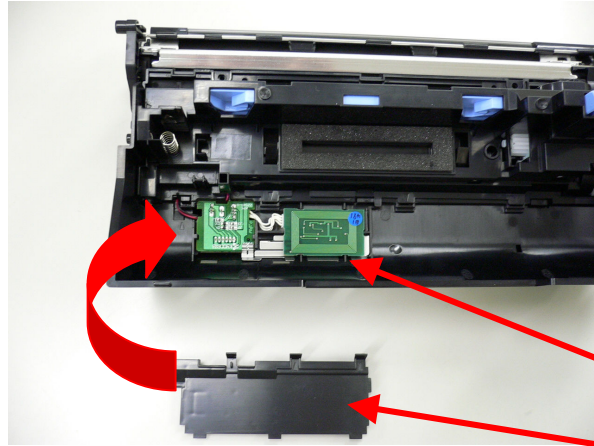


B5J-0151 Setup manual

B5J-0151 is attached in printer according to the following photo 1 and 2.



B5J-0151

cover

photo 1

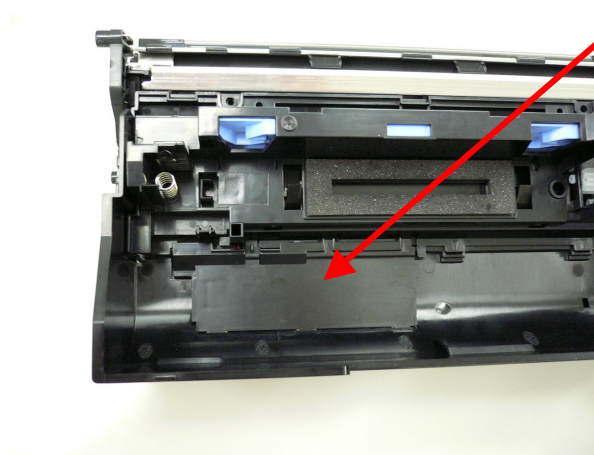


photo 2

RFID Tag is attached in toner cartridge according to the following photo 3.



RFID Tag

photo 3

## FCC WARNING

Changes or modifications not expressly approved by the party responsible for compliance could void the user's authority to operate the equipment.

## NOTICE

This device complies with Part 15 of FCC Rules and RSS-Gen of IC Rules. Operation is subject to the following two conditions: (1) this device may not cause interference, and (2) this device must accept any interference, including interference that may cause undesired operation of this device.

Since B5J-0151 owns its FCC ID and IC Number, we shall affix an exterior label on the outside of a product if the FCC ID and IC Number are not visible. The exterior label shall use wording such as either "Contains Transmitter Module FCC ID: E52B5J0151 / IC: 1059B-B5J0151" or "Contains FCC ID: E52B5J0151 / IC: 1059B-B5J0151".

There is not an official manual to this module (B5J-0151) but it is necessary for it to be included an explanatory note in a user manual of a product using this module.