

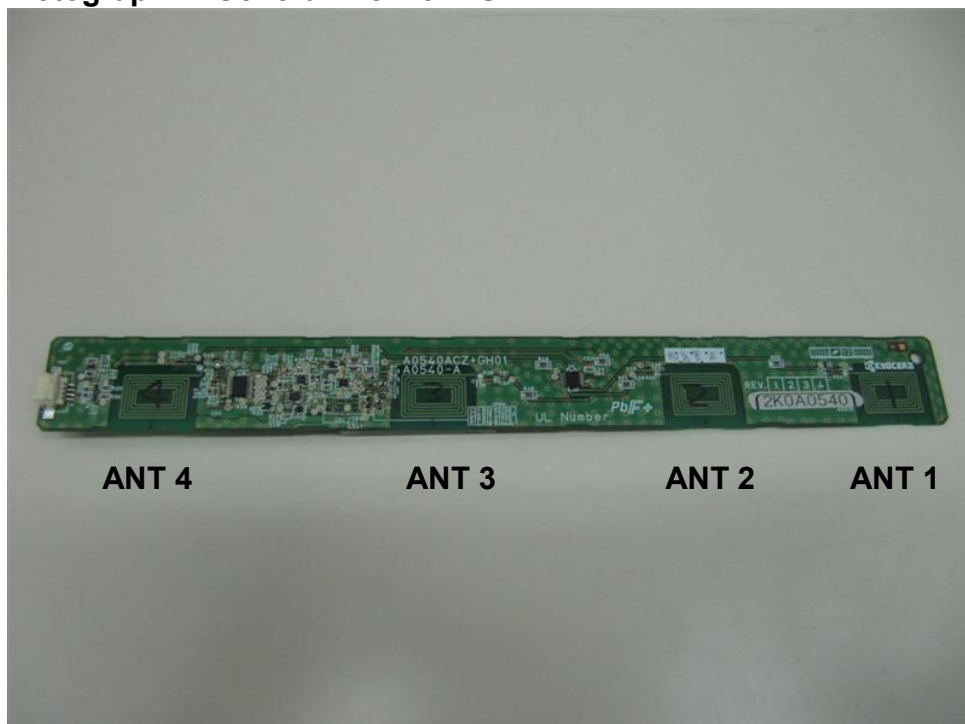
Attachment: Photographs of Test Setup

2K0A0540, RFID Module

Photographs of the Test Setup

This document contains the test setup photographs for test report 12607855 001 by TÜV Rheinland Japan Ltd. Refer to the test report for more details.

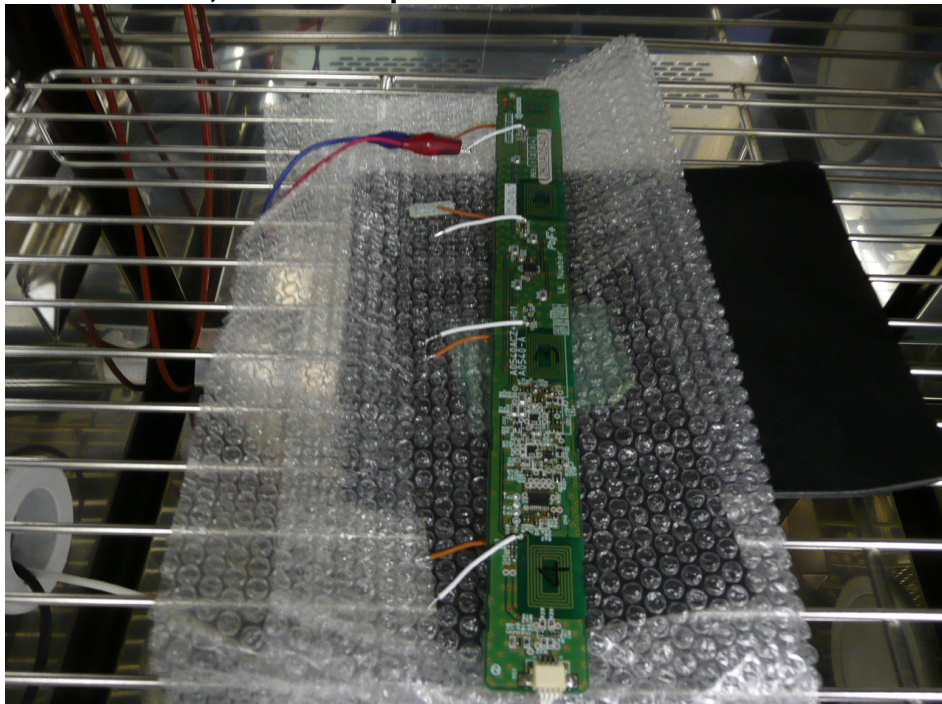
Photograph 1: General View of EUT



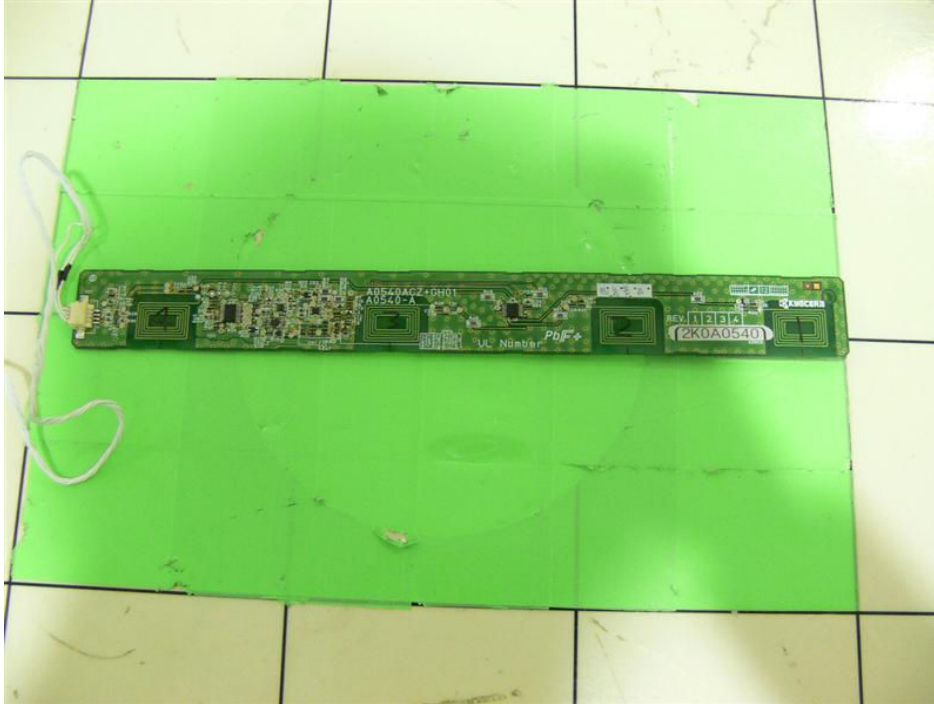
Photograph 2: Set-up for Antenna Port Conducted Emission Measurements, Overview



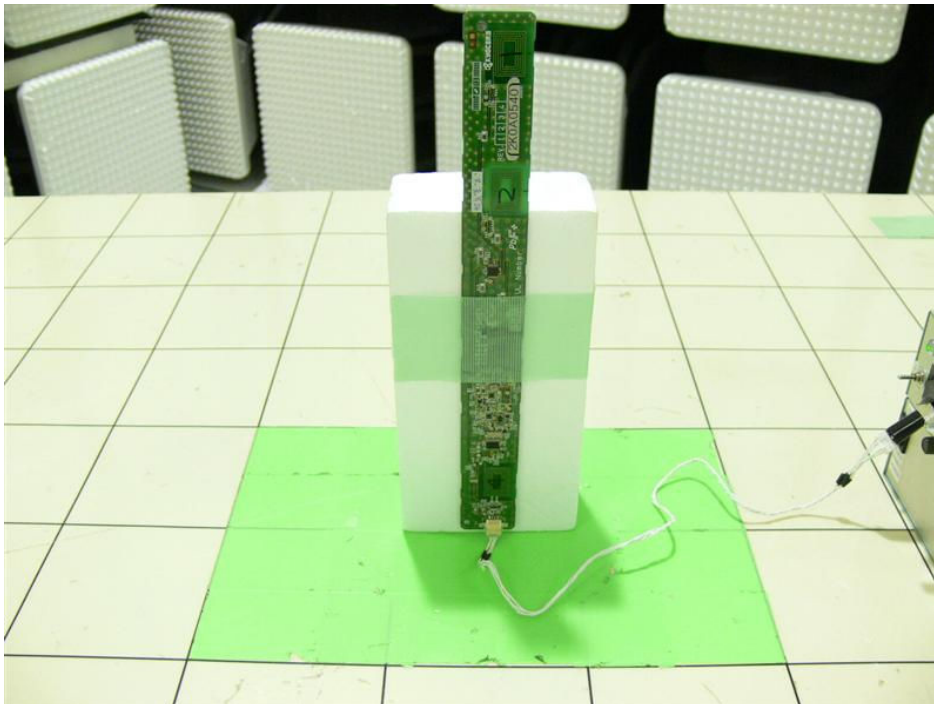
Photograph 3: Set-up for Antenna Port Conducted Emission Measurements, inside Temperature Chamber



Photograph 4: Set-up for Radiated Emission, Configuration with Test Jig, EUT Orientation X-Axis



Photograph 5: Set-up for Radiated Emission, Configuration with Test Jig, EUT Orientation Y-Axis



Photograph 6: Set-up for Radiated Emission, Configuration with Test Jig, EUT Orientation Z-Axis



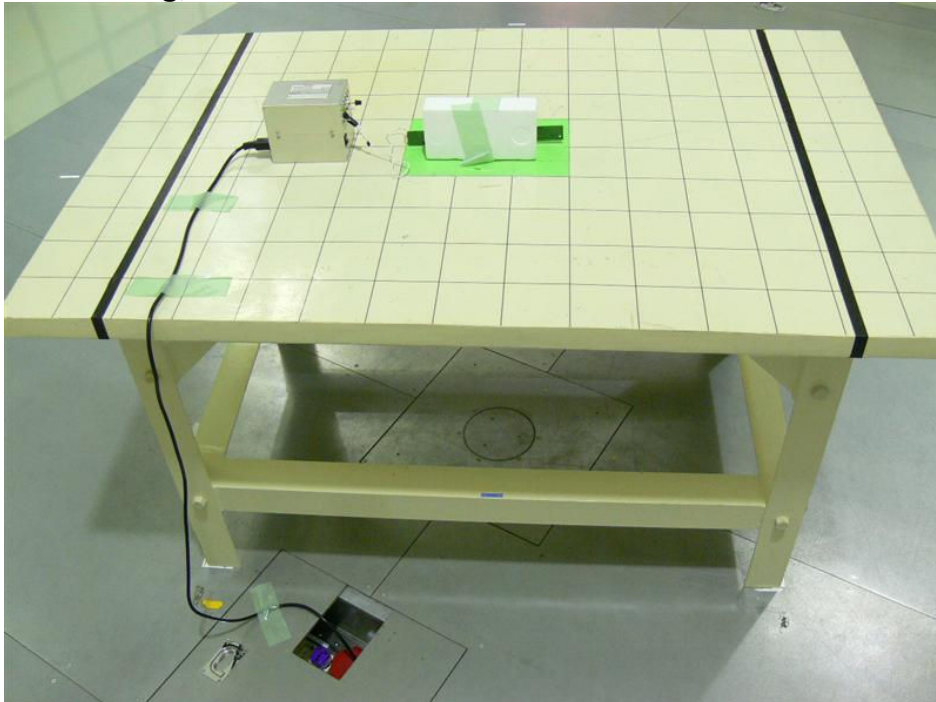
Photograph 7: Set-up for Radiated Emission of Transmitter including Loop Antenna, Configuration with Test Jig



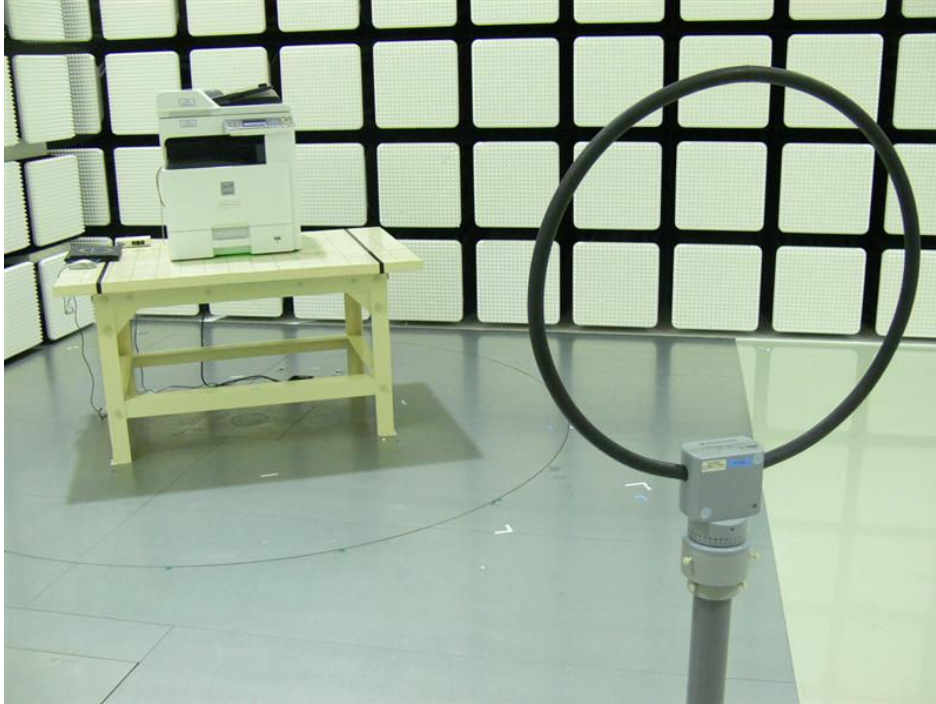
Photograph 8: Set-up for Radiated Emission of Transmitter, Configuration with Test Jig, Front View



Photograph 9: Set-up for Radiated Emission of Transmitter, Configuration with Test Jig, Rear View



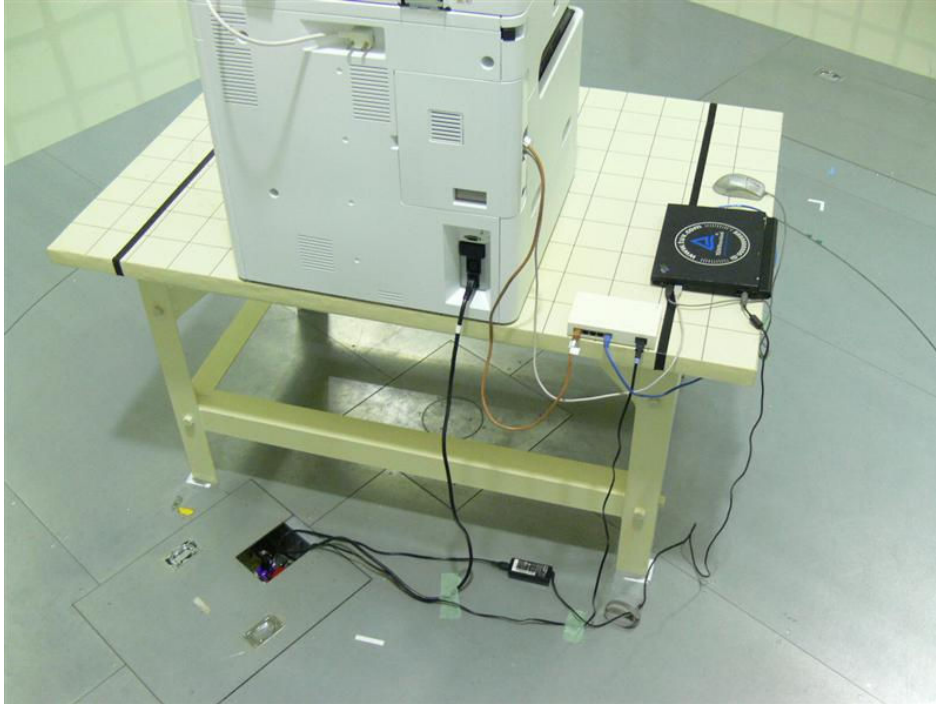
Photograph 10: Set-up for Radiated Emission of Transmitter including Loop Antenna, Configuration with Printer



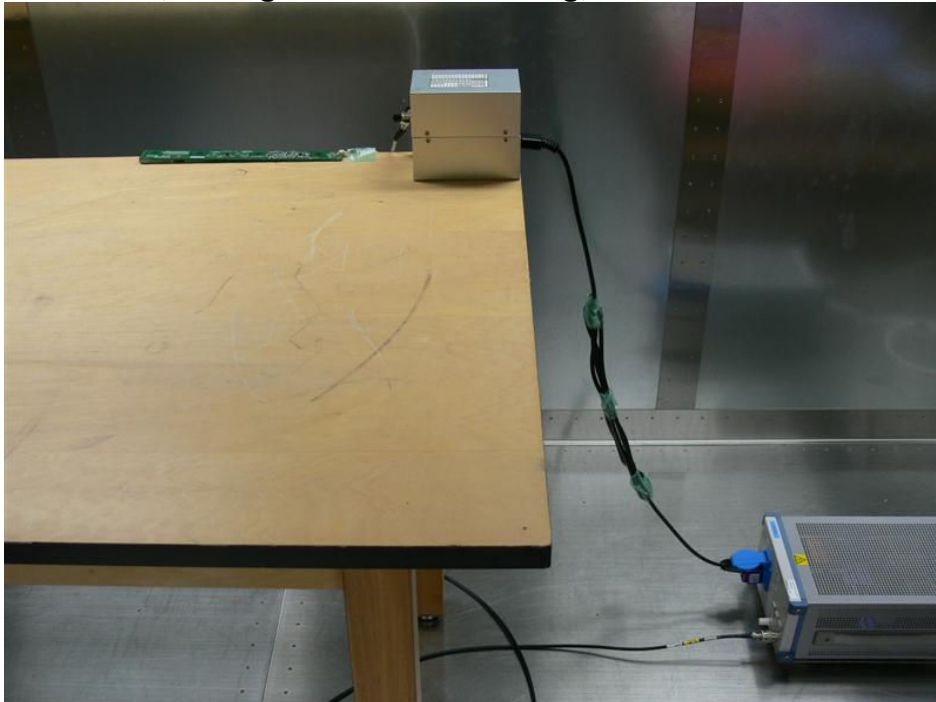
Photograph 11: Set-up for Radiated Emission of Transmitter, Configuration with Printer, Front View



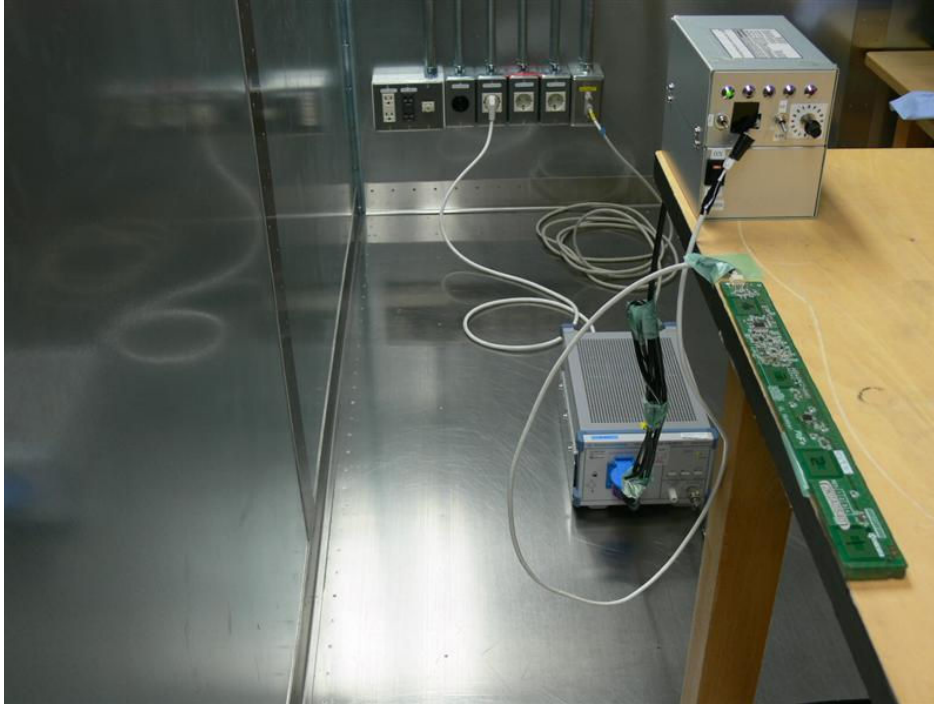
Photograph 12: Set-up for Radiated Emission of Transmitter, Configuration with Printer, Rear View



Photograph 13: Set-up for AC Power Line Conducted Emission of Transmitter, Configuration with Test Jig, Front View



Photograph 14: Set-up for AC Power Line Conducted Emission of Transmitter, Configuration with Test Jig, Rear View



Photograph 15: Set-up for AC Power Line Conducted Emission of Transmitter, Configuration with Printer, Front View



Photograph 16: Set-up for AC Power Line Conducted Emission of Transmitter, Configuration with Printer, Rear View

