

Fig. 18 PCB assembly No. 1

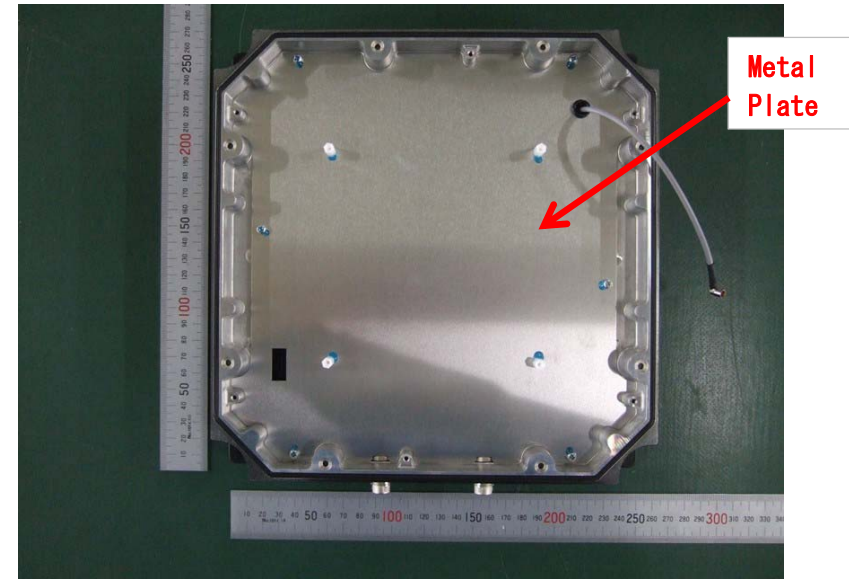


Fig. 19 PCB assembly No. 2

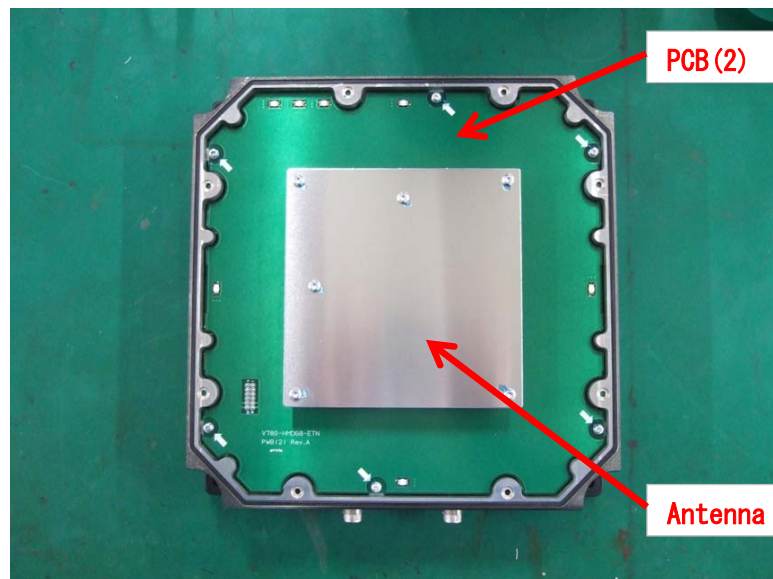


Fig. 20 PCB assembly No. 3



Fig. 20 PCB assembly No. 4



Fig. 21 PCB(1) Side A

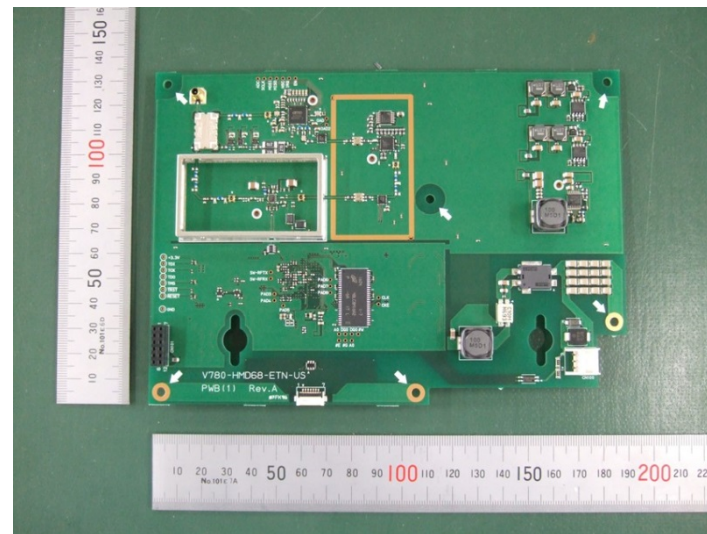


Fig. 22 PCB(1) Side A without shield

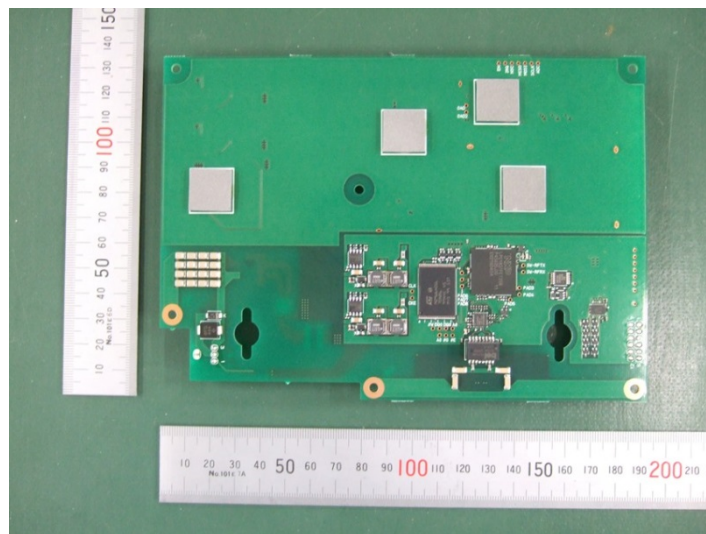


Fig. 23 PCB(1) Side B



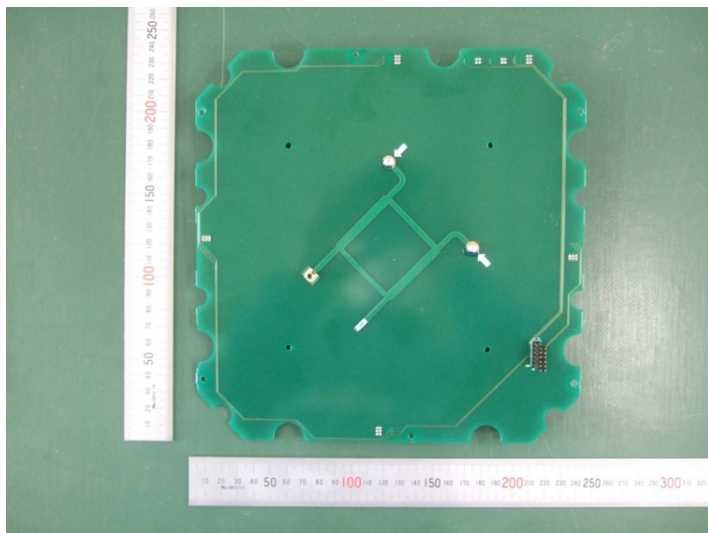


Fig. 25 PCB(2) Side A

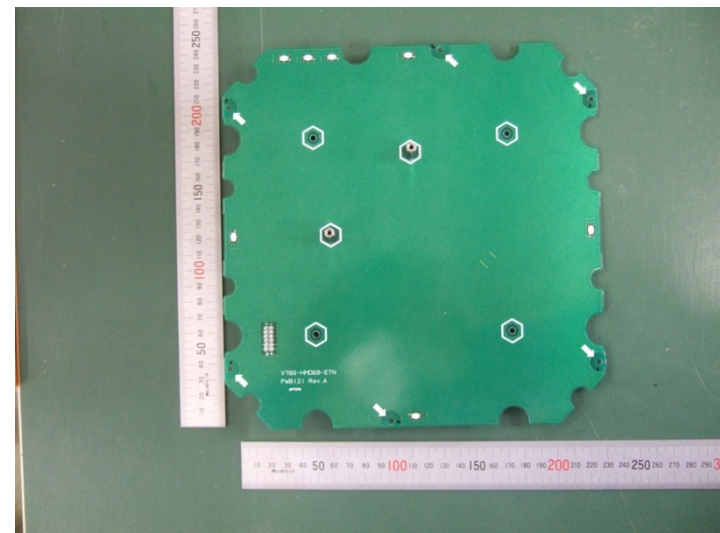


Fig. 26 PCB(2) Side B

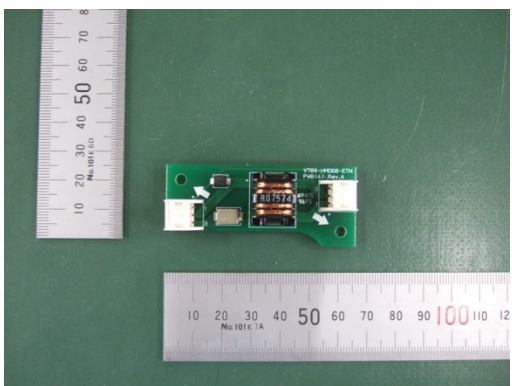


Fig. 27 PCB(4) Side A

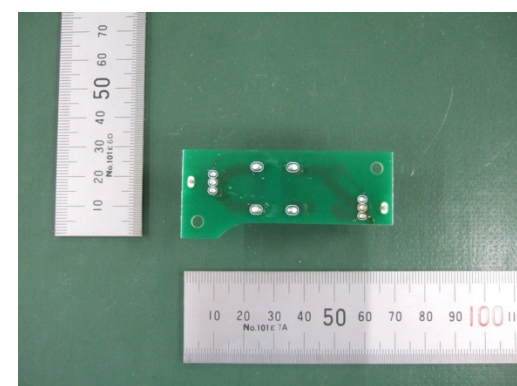


Fig. 28 PCB(4) Side B