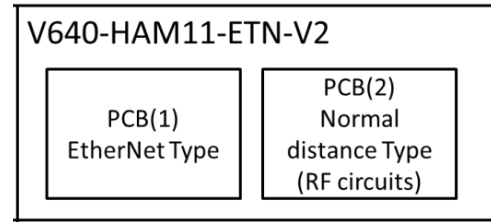


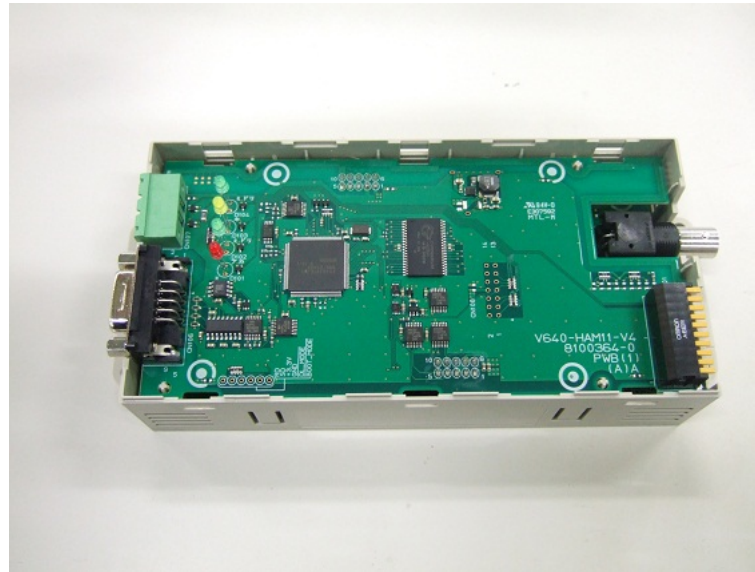
PCB configuration



PCB(1)  
Interface Board

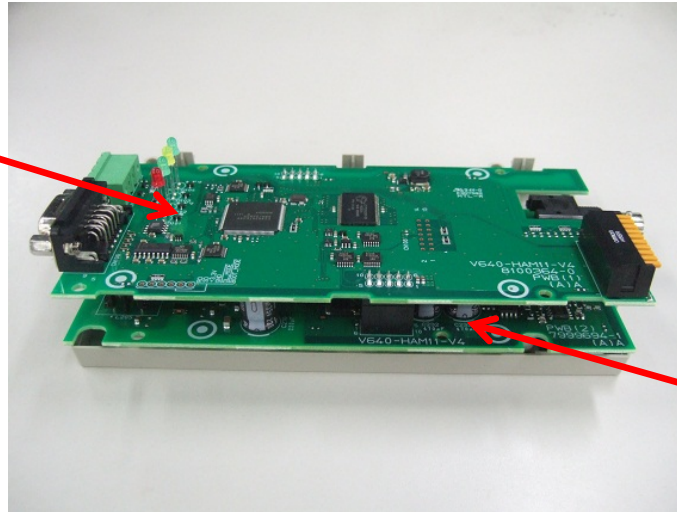


PCB(2)  
RF Module  
mounting Board



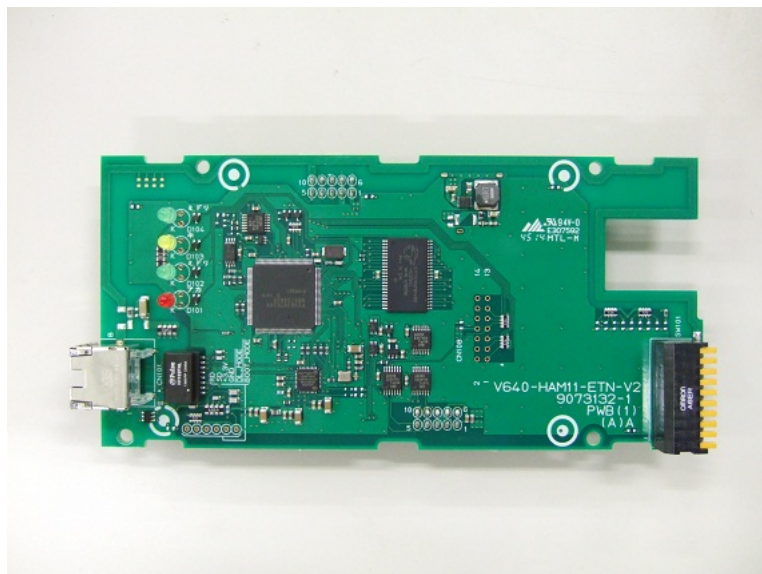
Example for assembly of PCB(1) & PCB(2) [V640-HAM11-V4 photo displayed]

**PCB(1)  
Interface Board**

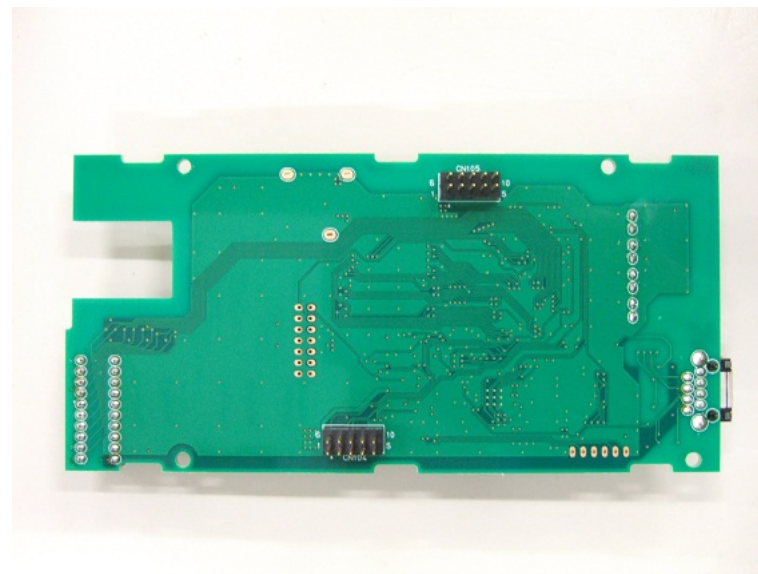


**PCB(2)  
RF Module  
mounting Board**

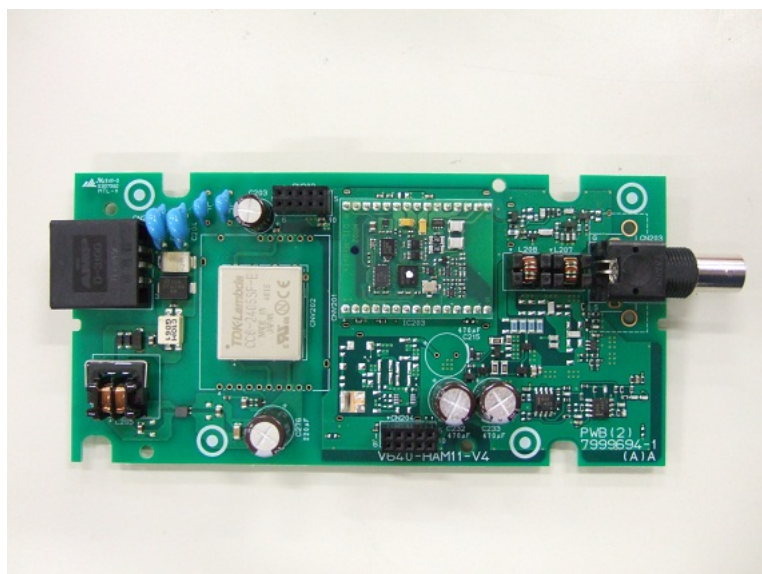
inside the Case



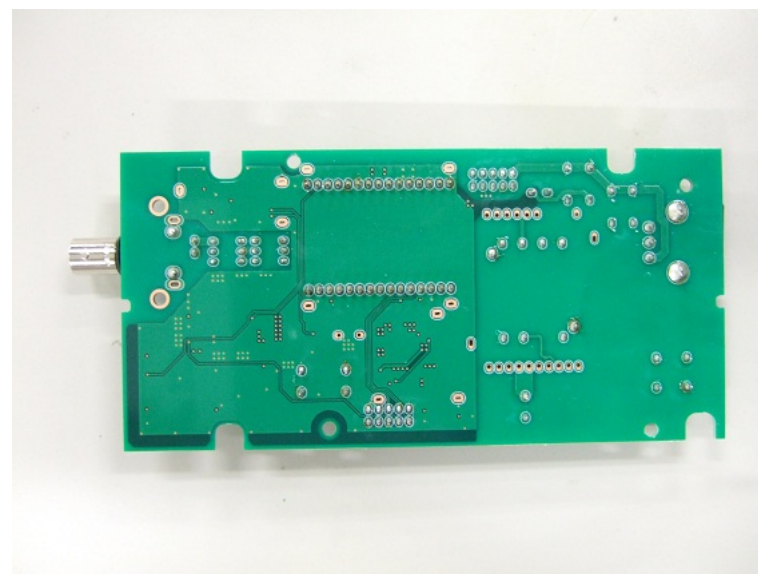
PCB(1) Side A



PCB(1) Side B



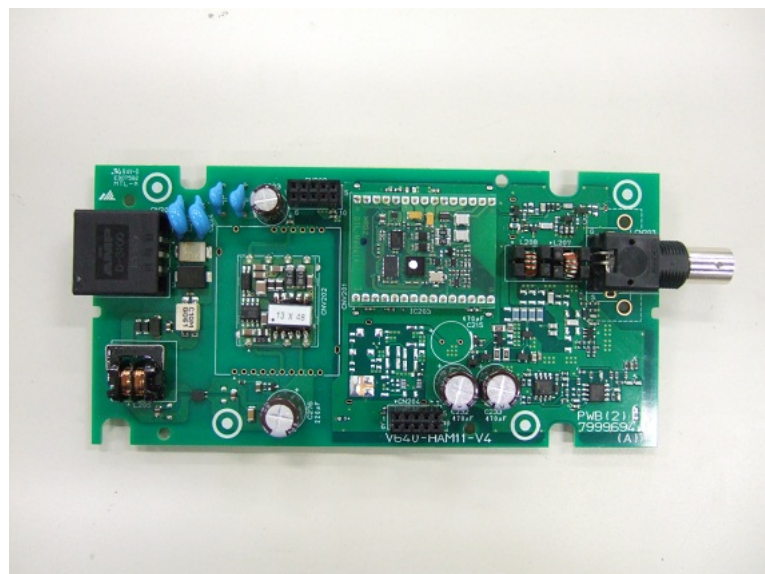
PCB(2) Side A



PCB(2) Side B

Model: V640-HAM11-ETN-V2 INSIDE VIEW PHOT

OMRON Corporation



PCB(2) Side A without shield