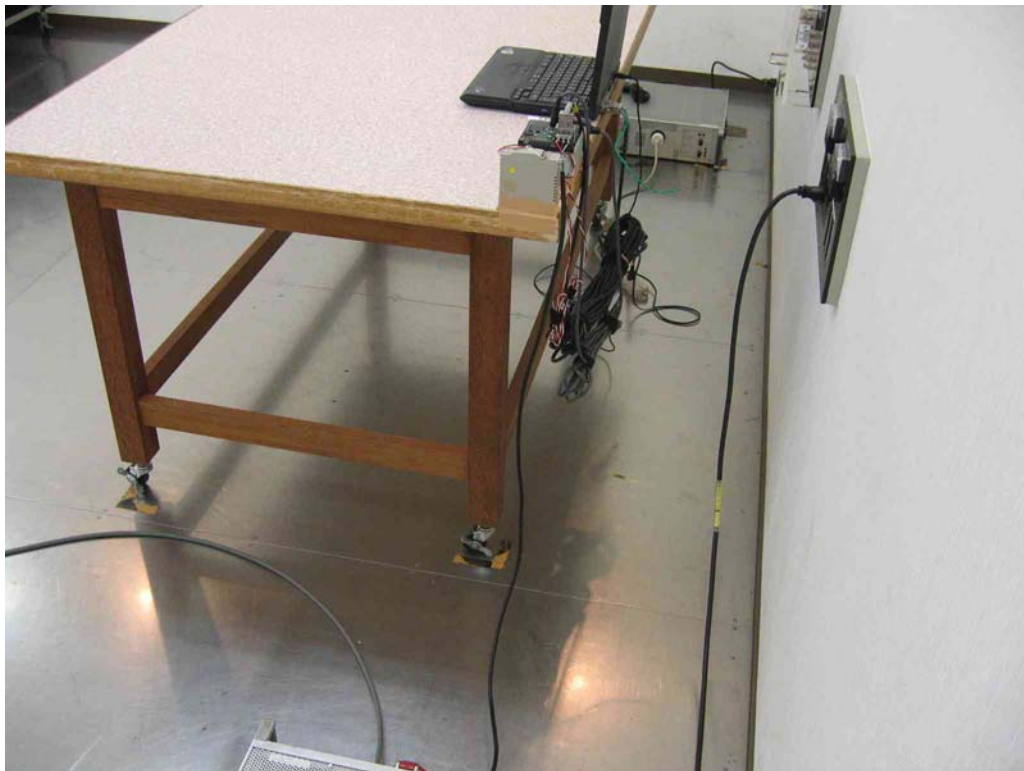


Conducted emission



UL Japan, Inc.

YAMAKITA EMC LAB.

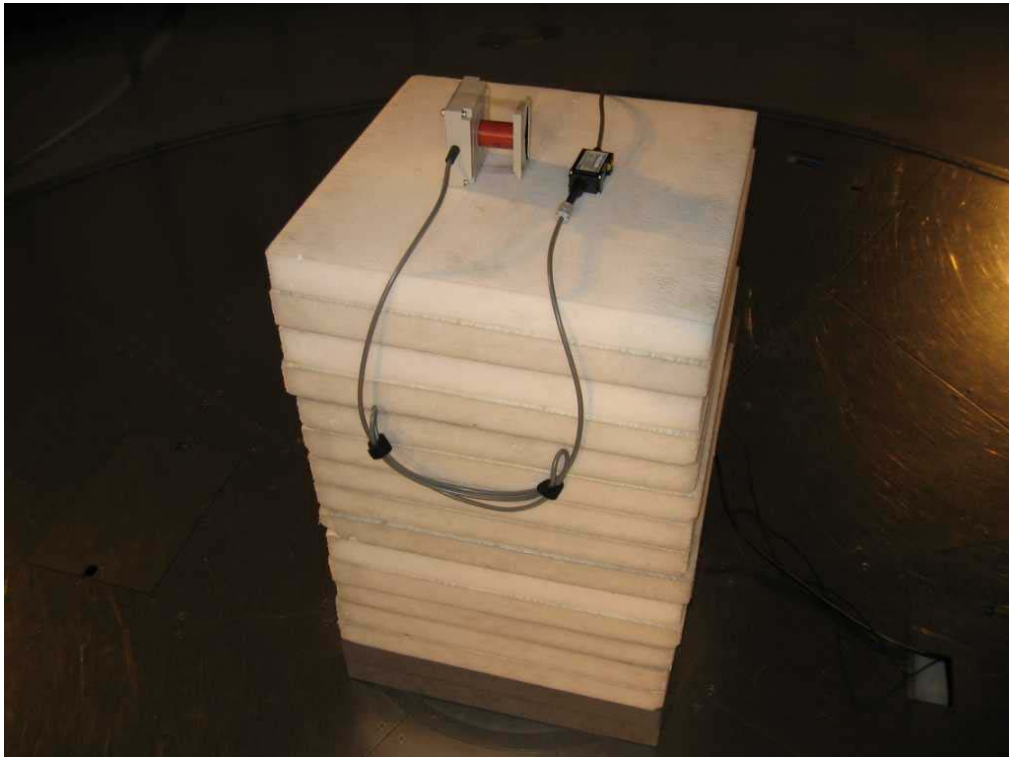
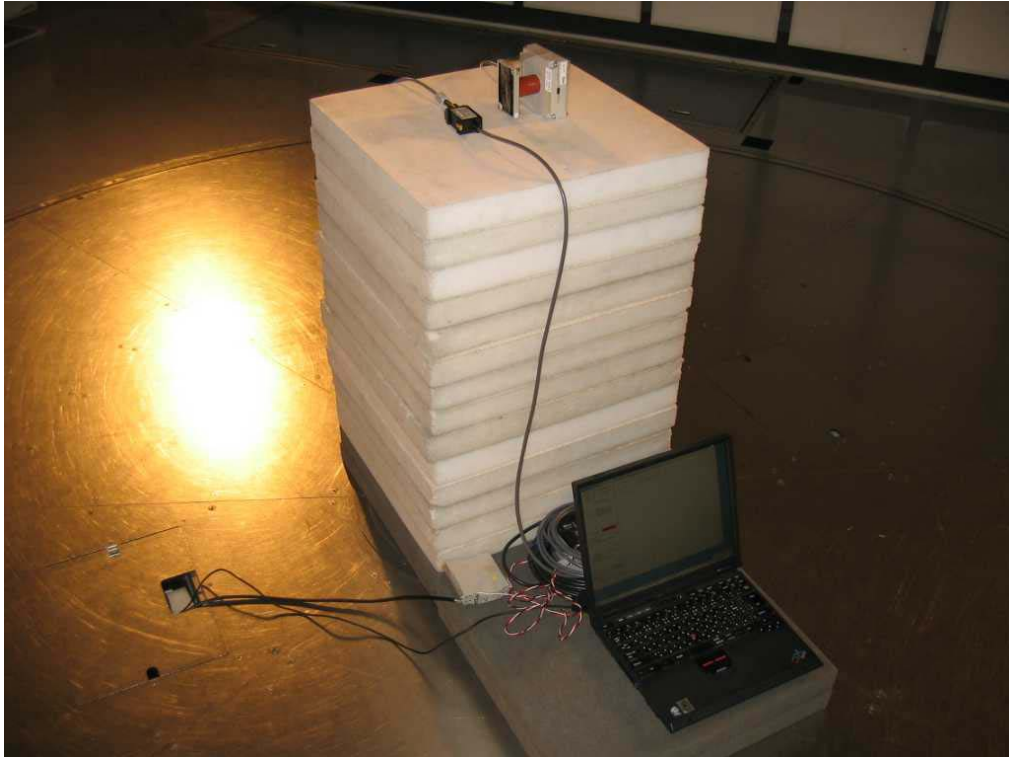
907 Kawanishi, Yamakita-machi, Ashigarakami-gun, Kanagawa-ken, 258-0124 JAPAN

Telephone: +81 465 77 1011

Facsimile: +81 465 77 2112

MF060b (26.04.07)

Radiated emission



UL Japan, Inc.

YAMAKITA EMC LAB.

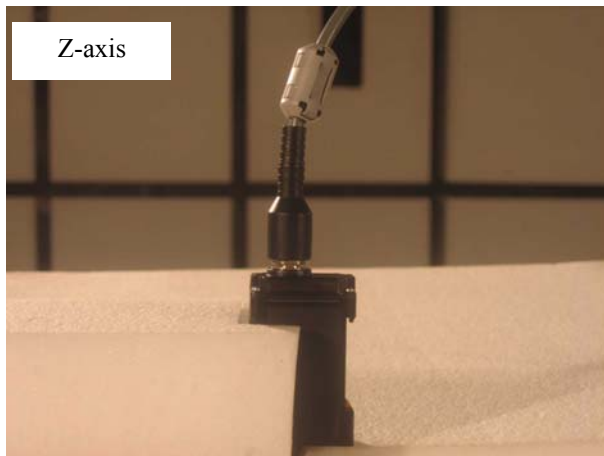
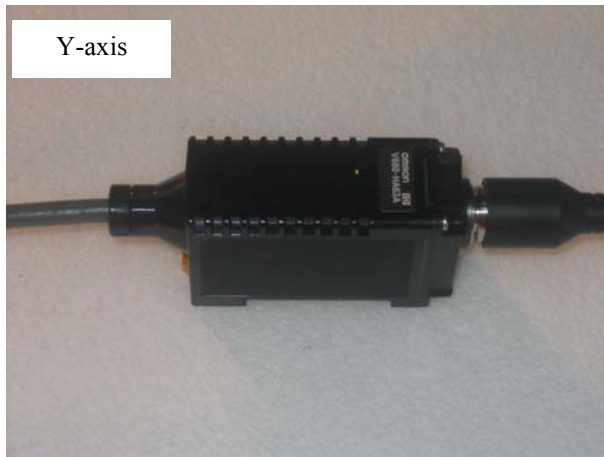
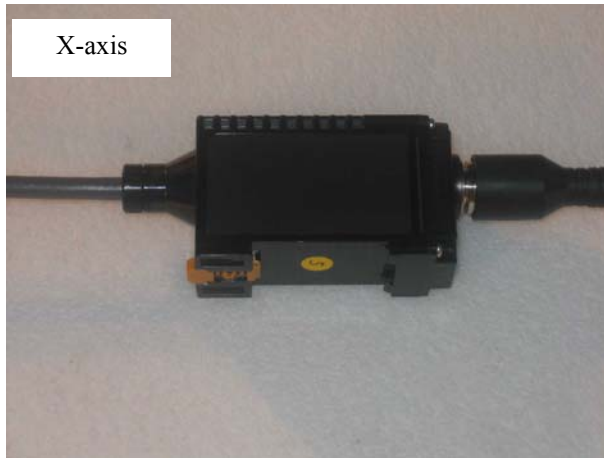
907 Kawanishi, Yamakita-machi, Ashigarakami-gun, Kanagawa-ken, 258-0124 JAPAN

Telephone: +81 465 77 1011

Facsimile: +81 465 77 2112

MF060b (26.04.07)

Pre-check of the worst position (Amplifier)



UL Japan, Inc.

YAMAKITA EMC LAB.

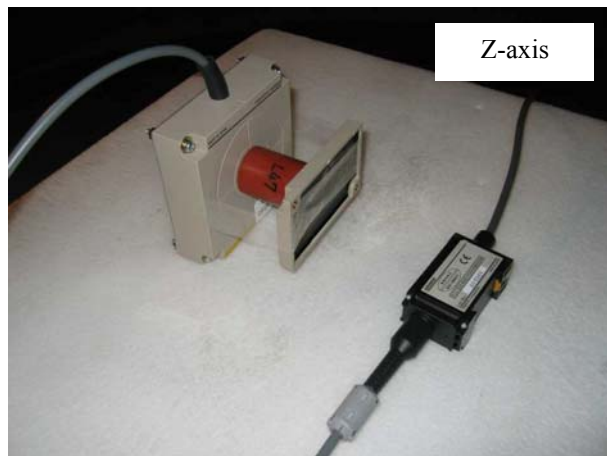
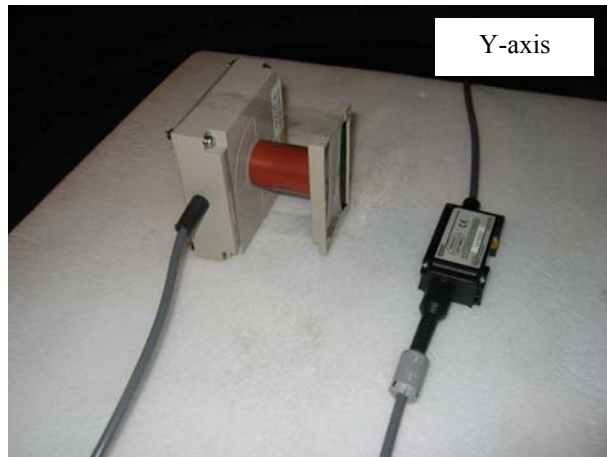
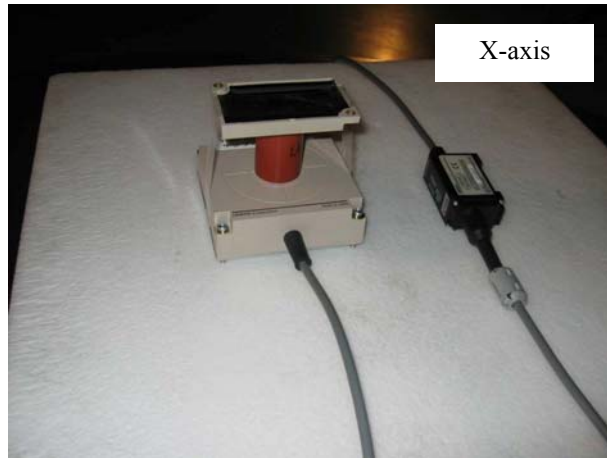
907 Kawanishi, Yamakita-machi, Ashigarakami-gun, Kanagawa-ken, 258-0124 JAPAN

Telephone: +81 465 77 1011

Facsimile: +81 465 77 2112

MF060b (26.04.07)

Pre-check of the worst position (Antenna)



Worst-case combination

Amplifier		Antenna	
Horizontal	Vertical	Horizontal	Vertical
X	X	Y	Y

UL Japan, Inc.

YAMAKITA EMC LAB.

907 Kawanishi, Yamakita-machi, Ashigarakami-gun, Kanagawa-ken, 258-0124 JAPAN

Telephone: +81 465 77 1011

Facsimile: +81 465 77 2112

MF060b (26.04.07)