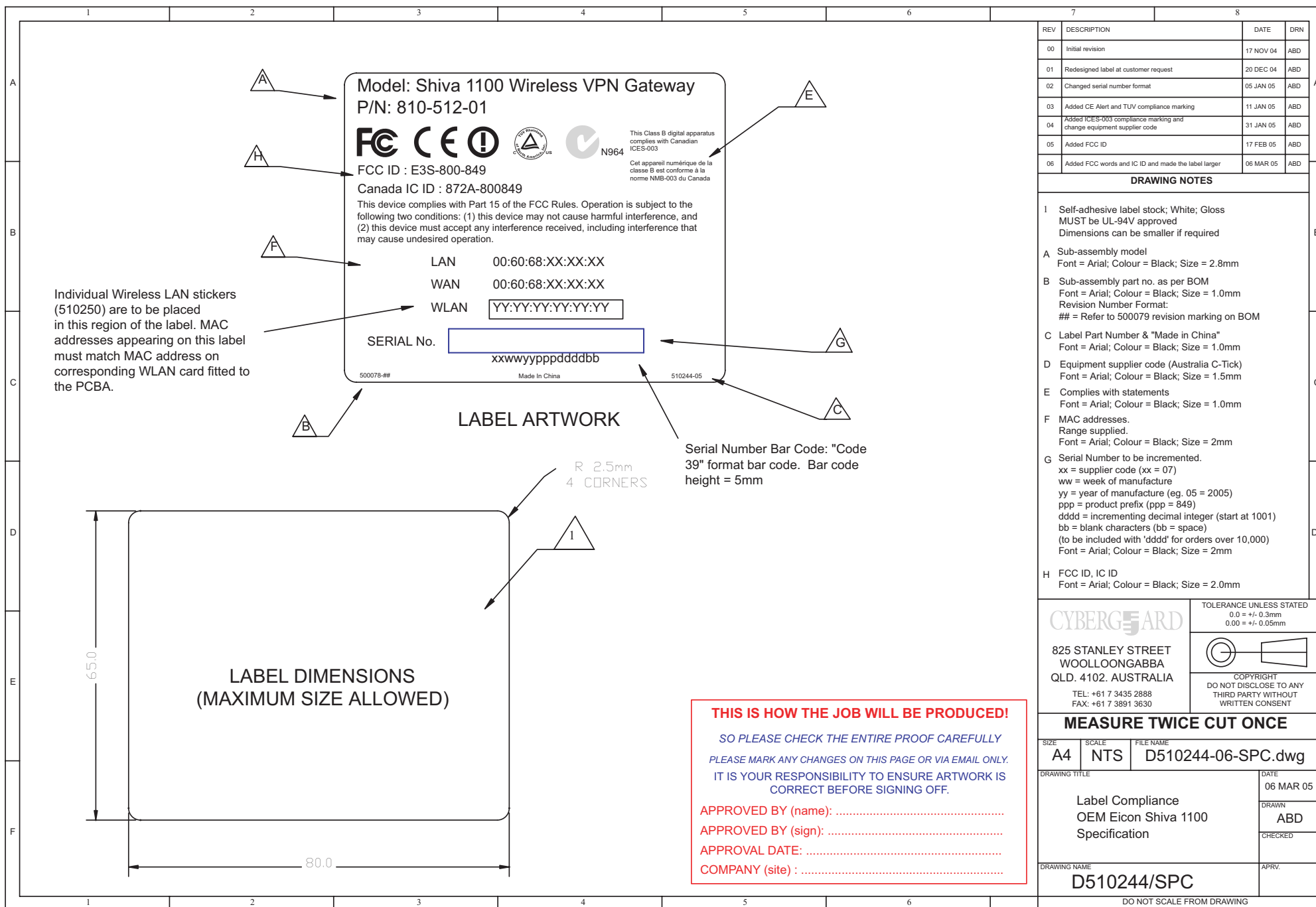


## **APPENDIX H**

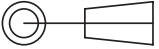
### **FCC LABELLING**



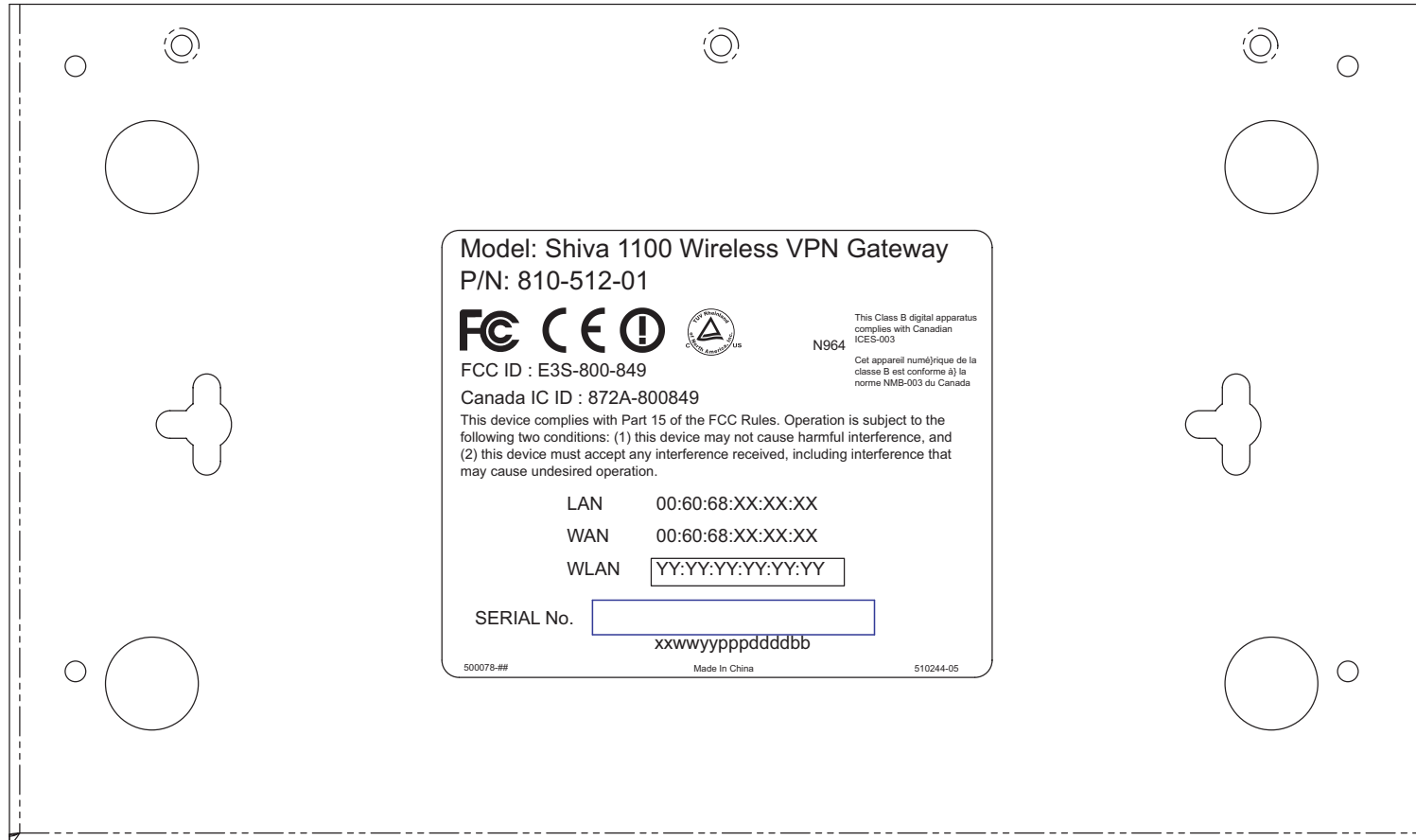


REV	DESCRIPTION	DATE	DRN
00	Initial revision	17 NOV 04	ABD
01	Redesigned label at customer request	20 DEC 04	ABD
02	Changed serial number format	05 JAN 05	ABD
03	Added CE Alert and TUV compliance marking	11 JAN 05	ABD
04	Added ICES-003 compliance marking and change equipment supplier code	31 JAN 05	ABD
05	Added FCC ID	17 FEB 05	ABD
06	Added FCC words and IC ID and made the label larger	06 MAR 05	ABD

DRAWING NOTES	
1	Self-adhesive label stock; White; Gloss MUST be UL-94V approved Dimensions can be smaller if required
A	Sub-assembly model Font = Arial; Colour = Black; Size = 2.8mm
B	Sub-assembly part no. as per BOM Font = Arial; Colour = Black; Size = 1.0mm Revision Number Format: ## = Refer to 500079 revision marking on BOM
C	Label Part Number & "Made in China" Font = Arial; Colour = Black; Size = 1.0mm
D	Equipment supplier code (Australia C-Tick) Font = Arial; Colour = Black; Size = 1.5mm
E	Complies with statements Font = Arial; Colour = Black; Size = 1.0mm
F	MAC addresses. Range supplied. Font = Arial; Colour = Black; Size = 2mm
G	Serial Number to be incremented. xx = supplier code (xx = 07) ww = week of manufacture yy = year of manufacture (eg. 05 = 2005) ppp = product prefix (ppp = 849) dddd = incrementing decimal integer (start at 1001) bb = blank characters (bb = space) (to be included with 'dddd' for orders over 10,000) Font = Arial; Colour = Black; Size = 2mm
H	FCC ID, IC ID Font = Arial; Colour = Black; Size = 2.0mm

<b>CYBERGARD</b>		TOLERANCE UNLESS STATED 0.0 = +/- 0.3mm 0.00 = +/- 0.05mm	
825 STANLEY STREET WOOLLOONGABBA QLD. 4102. AUSTRALIA TEL: +61 7 3435 2888 FAX: +61 7 3891 3630		 COPYRIGHT DO NOT DISCLOSE TO ANY THIRD PARTY WITHOUT WRITTEN CONSENT	

MEASURE TWICE CUT ONCE		
SIZE <b>A4</b>	SCALE <b>NTS</b>	FILE NAME <b>D510244-06-SPC.dwg</b>
DRAWING TITLE  Label Compliance OEM Eicon Shiva 1100 Specification		DATE 06 MAR 05 DRAWN ABD CHECKED
DRAWING NAME <b>D510244/SPC</b>		APRV.
DO NOT SCALE FROM DRAWING		



LABEL PLACEMENT ON BOTTOM OF METALWORK CASE