



# **SAMSUNG MagicLAN**

## **Quick Installation Guide**

### **(Wireless LAN Card)**

---

---

삼성 매직랜 무선랜 카드 설치 설명서

**Rev 2.0**

이 설명서는 영문과 국문이 동시에 기재되어 있습니다.

This manual supports English and Korean.



# *SAMSUNG MagicLAN*

---

## *English Manual*



## Notice 1

---

This manual cannot be reproduced in any form without the prior written permission of SAMSUNG Electro-Mechanics Co., Ltd.

SAMSUNG Electro-Mechanics Co., Ltd. reserves the right to change this manual and the specifications to improve products without prior notice. So you can get the most recent software and user documentation for all MagicLAN products on our web site.

The users manual or instruction manual for an intentional or unintentional radiator shall caution the user that changes or modifications not expressly approved by the party responsible for compliance could void the user's authority to operate the equipment.

All other brand and product names are trademarks of registered trademarks of their respective holders.

<http://www.MagicLAN.com>

### **Service Dept.**

Tel : +82-31-218-2416,8,9,20 Fax : +82-31-218-2431

### **Sales Dept.**

<America>

Tel : +82-31-218-2407,9,11 Fax : +82-31-210-5996

<Europe>

Tel : +82-31-218-2409 Fax : +82-31-210-5996

<Asia>

Tel : +82-31-210-5603 Fax : +82-31-218-2414

Japan

Tel : +82-31-210-3122 Fax : +82-31-210-5996

China

Tel : +82-31-210-5703 Fax : +82-31-210-5996

Copyright © 1999 - 2003 SAMSUNG Electro-Mechanics Co., Ltd.  
All rights reserved.

## Notice 2

---

---

### Important Safety Information

---

---

- Read these simple guidelines. Breaking the rules may be dangerous or illegal. SAMSUNG will not be responsible for any damages caused by breaking the rules.
- WLAN Card described in this document is approved for use in a wireless local area network.
- Remember to make backup copies of important data.
- When you are transferring data, keep your laptop computer stationary. Roaming between access points (APs) may break the connection.
- Only qualified service personnel must repair the equipment.
- All wireless devices may get interference, which could affect performance.
- Use approved accessories only. Do not connect incompatible products.
- Use only accessories approved by the WLAN Card manufacturer for use with this particular WLAN Card. The use of any other types will invalidate any approval or warranty applying to the WLAN Card, and may be dangerous.
- Use only the region settings appropriate for the area where the WLAN Card is used at the present time. Using the card in any other region or with an incorrect region setting is prohibited and may be illegal.
- Operation of any radio transmitting equipment, including a WLAN Card, may cause interference with the functionality of inadequately protected medical devices.
- Do not use the WLAN Card on aircraft.
- Do not use the WLAN Card at a refueling point.
- Do not use the WLAN Card near inflammable materials or chemicals.
- Do not use the WLAN Card where blasting is in progress.
- Do not use the WLAN Card when the use of wireless device may cause interference or danger.
- Do not use the WLAN Card where the use of cellular terminals is prohibited.
- Microwave oven degrades the performance of wireless LAN drastically. So do not use the WLAN card in the environment where Microwave oven is being used.

## Notice 3

---

### **FCC Statement and Warnings :**

This device complies with Part 15 rules of the FCC and with RSS-210 of Industry of Canada. Operation is subject to the following two conditions:

1. This device may not cause harmful interference, and
2. This device must accept any interference received, including interference that may cause undesired operation.

#### **Manufacturers Federal Communications Commission Declaration of Conformity Statement:**

This equipment has been tested and found to comply with the limits of a Class B digital device, pursuant to Part 15 of the FCC Rules. These limits are designed to provide reasonable protection against harmful interference when the equipment is operated in a residential environment. This equipment generates, uses, and radiates radio frequency energy, and if not installed and used in accordance with the instructions, may cause harmful interference. However, there is no guarantee that interference will not occur. If this equipment does cause interference to radio or television reception, which can be determined by turning the equipment off and on, the user is encouraged to correct the interference by one of the following measures:

- REORIENT OR RELOCATE THE RECEIVING ANTENNA.
- INCREASE SEPARATION BETWEEN THE EQUIPMENT AND RECEIVER.
- CONNECT THE EQUIPMENT TO AN OUTLET ON A CIRCUIT DIFFERENT FROM WHICH THE RECEIVER IS CONNECTED.
- CONSULT THE DEALER OR AN EXPERIENCED RADIO/TV TECHNICIAN.

#### **Caution**

The Part 15 radio device operates on a non-interference basis with other devices operating at this frequency when using the listed antenna. Any changes or modifications to product not expressly approved by Samsung Electro-Mechanics could void the user's authority to operate this device.



**Declaration of Conformity for RF Exposure:**

The radio module has been evaluated under FCC Bulletin OET 65C and found compliant to the requirements as set forth in CFR 47 Sections 2.1091, 2.1093, and 15.247 (b) (4) addressing RF Exposure from radio frequency devices. For the listed antenna, the equipment should be positioned more than 2.5cm(USB/PCMCIA, PCI : 20cm) from your body or nearby persons.

**Collocation Statement:**

This device must not be collocated with any other antenna or transmitters.

## EMC Warning(French)

---

### CE Statement and Warnings :

#### AVERTISSEMENT

Pendant l'installation et l'utilisation de cette combinaison d'émetteur et antenne, la limite d'exposition de fréquence radio de 1 mW/cm<sup>2</sup> peut être excédée à courtes distances des antennes installées.

À cet effet, l'utilisateur doit garder une distance minimale de 20 cm de l'antenne.

#### Information Importante de Sécurité

---

- Lisez ces simples directives. La violation des règles peut être dangereuse ou illégale. SAMSUNG ne sera pas responsable pour des dommages causés par la violation des règles.
- La carte WLAN décrite dans ce document a été approuvée pour utilisation dans un réseau local (local area network) sans fil.
- N'oubliez pas de faire des copies de sécurité de toute information importante.
- Pendant la transmission de données, ne déplacez pas votre laptop. Le déplacement entre access points (APs) peut couper la communication.
- Le matériel sera uniquement réparé que par du personnel de service qualifié.
- Tout appareillage sans fil peut recevoir de l'interférence, ce qui peut agir sur le fonctionnement.
- N'utilisez que des accessoires approuvés. Ne connectez pas de produits incompatibles.
- Utilisez seulement des accessoires approuvés par le constructeur pour l'usage en combinaison avec cette carte spécifique WLAN. L'utilisation d'autres types invalidera toute agrément ou garantie qui s'applique à la carte WLAN et peut être dangereuse.
- Utilisez seulement des mises au point régionales convenables à la région où la carte WLAN est actuellement en usage. L'utilisation de la carte dans une autre région ou avec des mises au point régionales incorrectes est interdite et peut être illégale.
- L'utilisation d'émetteurs radio, dont les cartes WLAN, peut causer de l'interférence sur la fonctionnalité d'appareils médicaux sans protection suffisante.
- N'utilisez pas la carte WLAN dans un avion.
- N'utilisez pas la carte WLAN près d'un point de recharge de carburant.
- N'utilisez pas la carte WLAN près de matières inflammables ou de produits chimiques.
- N'utilisez pas la carte WLAN où des explosions sont en cours.
- N'utilisez pas la carte WLAN quand l'usage d'appareils sans fil peut causer de l'interférence ou du danger.
- N'utilisez pas la carte WLAN où l'usage de terminaux sans fil est interdit.
- Les fours à micro-ondes diminuent la fonctionnalité des LANs sans fil considérablement. À cet effet, n'utilisez donc pas la carte WLAN dans un environnement où un four à micro-ondes est en usage.

## EMC Warning(German)

---

### CE Statement and Warnings :

#### **WARNUNG**

Bei der Installation und Gebrauch dieser Kombination von Sendegerät und Antenne kann bei geringer Entfernung der installierten Antennen die Funkfrequenzintensitätsgrenze von  $1\text{mW}/\text{cm}^2$  überschritten werden.

Deswegen soll der Benutzer eine minimum Entfernung von 20 cm der Antenne betrachten.

### Wichtige Sicherheitsinformation

---

- Lesen Sie diese einfachen Richtlinien. Übertretung der Regeln kann gefährlich oder illegal sein. SAMSUNG ist nicht verantwortlich für Schaden welchen verursacht werden durch Übertretung der Regeln.
- Die WLAN Karte der beschrieben wird in dieses Dokument ist für WLAN Gebrauch genehmigt worden.
- Denken Sie daran Kopien von wichtige Information zu machen und aufzubewahren .
- Solange Sie Daten übertragen, halten Sie denn Ihren Laptopcomputer unveränderlich. Verlegung des Gerätes zwischen Access Points (APs) kann die Verbindung lösen.
- Das Gerät soll nur von qualifiziertes Sevicepersonal repariert werden.
- Durch Interferenz kann das Funktionieren jedes drahtlosen Gerätes beeinflusst werden.
- Nur genehmigte Accessoires sollen verwendet werden. Schließen Sie keine inkompatibele Produkte an.
- Benutzen Sie in Kombination mit dieser spezifischen WLAN Karte nur Accessoires welchen vom Hersteller genehmigt worden sind. Das Gebrauch von andere Typen macht jede Zulassung oder Garantie die anwendbar ist auf die WLAN Karte fällig und kann gefährlich sein.
- Beim Gebrauch sollen die jeweiligen regionalen Bedingungen berücksichtigt werden. Der Betrieb der Karte in einer anderen Region oder mit einer falschen regionalen Einstellung ist verboten und kann illegal sein.
- Der Betrieb von Funkgeräte, einschließlich WLAN Karten, kann Interferenz verursachen auf das Funktionieren von unzureichend geschützte medizinische Geräte.
- Die WLAN Karte soll nicht in Flugzeuge benutzt werden.
- Die WLAN Karte soll nicht an einer Tankstelle benutzt werden.
- Die WLAN Karte soll nicht in der Nähe von entzündliche Materialien oder Chemikalien benutzt werden.
- Die WLAN Karte soll nicht in der Nähe von Explosionen benutzt werden.
- Die WLAN Karte soll nicht benutzt werden wenn der Betrieb von drahtloser Geräten Interferenz oder Gefahr verursachen könnte.
- Die WLAN Karte soll nicht benutzt werden wenn der Betrieb drahtloser Teminals verboten ist.
- Das Funktionieren von drahtlosen LANs wird von Mikrowellengeräte drastisch negativ beeinflusst. Deswegen soll die WLAN Karte nicht benutzt werden in einer Umgebung wo ein Mikrowellengerät benutzt wird.



## EMC Warning(Greek)

### CE Statement and Warnings :

#### ΠΡΟΕΙΔΟΠΟΙΗΣΗ

Κατά την εγκατάσταση και λειτουργία αυτού του συνδυασμού πομπού και κεραίας, ενδέχεται να ξεπεραστεί το όριο έκθεσης σε ραδιοσυχνότητα του  $1\text{mW}/\text{cm}^2$  σε αποστάσεις που βρίσκονται κοντά στις εγκατεστημένες κεραίες. Για τον λόγο αυτό ο χρήστης θα πρέπει να διατηρεί μια ελάχιστη απόσταση 20 εκατοστών από την κεραία.

#### Σημαντικές Πληροφορίες Ασφαλείας

- Διαβάστε αυτές τις απλές οδηγίες. Η μη τήρηση των κανόνων ενδέχεται να είναι επικίνδυνη ή παράνομη. Η SAMSUNG δεν θα είναι υπεύθυνη για οποιεσδήποτε ζημιές προκληθούν από τη μη τήρηση των κανόνων.
- Η κάρτα WLAN Card η οποία περιγράφεται στο παρόν έγγραφο έχει εγκριθεί για χρήση σε ένα ασύρματο τοπικό δίκτυο (wireless local area network).
- Θυμηθείτε να δημιουργήσετε αντίγραφα ασφαλείας των σημαντικών δεδομένων σας.
- Όταν μεταφέρετε δεδομένα, ο φορητός προσωπικός σας υπολογιστής θα πρέπει να παραμένει ακίνητος. Η μετακίνηση ανάμεσα σε σημεία πρόσβασης (Aps) ενδέχεται να διακόψει τη σύνδεση.
- Μόνο εξειδικευμένο τεχνικό προσωπικό θα πρέπει να επισκευάζει τον εξοπλισμό αυτό.
- Όλες οι ασύρματες συσκευές ενδέχεται να δημιουργήσουν παρεμβολές, οι οποίες θα μπορούσαν να επηρεάσουν την απόδοση.
- Χρησιμοποιείτε μόνο εγκεκριμένα εξαρτήματα. Μη συνδέετε ασύμβατα προϊόντα.
- Χρησιμοποιείτε μόνο εξαρτήματα τα οποία έχουν εγκριθεί από τον κατασκευαστή της WLAN Card για χρήση με αυτή τη συγκεκριμένη WLAN Card. Η χρήση οποιονδήποτε άλλων τύπων θα καταστήσει άκυρη κάθε έγκριση ή εγγύηση που ισχύει στην περίπτωση της WLAN Card, ενώ ενδέχεται να είναι και επικίνδυνη.
- Χρησιμοποιείτε μόνο τις ρυθμίσεις περιοχής (region settings) που ισχύουν για την περιοχή όπου η WLAN Card χρησιμοποιείται την παρούσα στιγμή. Η χρησιμοποίηση της κάρτας σε οποιαδήποτε άλλη περιοχή ή με λανθασμένες ρυθμίσεις περιοχής απαγορεύεται και ενδέχεται να είναι παράνομη.
- Η λειτουργία οποιασδήποτε συσκευής που εκπέμπει ραδιοσήματα, συμπεριλαμβανομένης και μιας κάρτας WLAN Card, ενδέχεται να δημιουργήσει παρεμβολές και να επηρεάσει τη λειτουργικότητα ιατρικών συσκευών οι οποίες δεν διαθέτουν την πρόσφατη θωράκιση.
- Μη χρησιμοποιείτε τη WLAN Card σε αεροσκάφη.
- Μη χρησιμοποιείτε τη WLAN Card σε σημεία ανεφοδιασμού καυσίμων.
- Μη χρησιμοποιείτε τη WLAN Card κοντά σε εύφλεκτα υλικά ή χημικά.
- Μη χρησιμοποιείτε τη WLAN Card όταν βρίσκονται σε εξέλιξη ανατινάξεις.
- Μη χρησιμοποιείτε τη WLAN Card όταν η χρήση ασύρματων συσκευών ενδέχεται να προκαλέσει παρεμβολές ή κίνδυνο.
- Μη χρησιμοποιείτε τη WLAN Card σε μέρη στα οποία απαγορεύεται η χρήση κυψελοειδών τερματικών.
- Οι φούρνοι μικροκυμάτων υποβαθμίζουν δραστικά τις επιδόσεις των ασύρματων τοπικών δικτύων. Ως εκ τούτου δεν θα πρέπει να χρησιμοποιείτε τη WLAN Card σε περιβάλλον στο οποίο χρησιμοποιούνται φούρνοι μικροκυμάτων.

## EMC Warning(Italian)

---

---

### CE Statement and Warnings :

#### AVVERTENZA

Durante l'installazione e l'uso di questa combinazione di trasmettitore ed antenna, è possibile che venga superato il limite di esposizione alle radiofrequenze di 1mW/cm<sup>2</sup> a distanze vicine alle antenne installate.

Per tale motivo, l'utente deve mantenere una distanza minima di 20 cm dall'antenna.

#### Informazioni importanti sulla sicurezza

---

---

- Leggere queste semplici linee guida. La violazione delle regole può risultare pericolosa o illegale. SAMSUNG non sarà responsabile per eventuali danni provocati dalla violazione delle regole.
- La Scheda WLAN descritta in questo documento è approvata per l'uso in una rete locale (LAN) senza fili.
- Ricordarsi di effettuare copie di backup di dati importanti.
- Durante il trasferimento dei dati, tenere fermo il proprio laptop. Passando fra diversi punti di accesso (AP) si può interrompere il collegamento.
- Il dispositivo deve essere riparato unicamente da personale tecnico qualificato.
- Tutti dispositivi senza filo possono ricevere interferenze, che possono comprometterne le prestazioni.
- Utilizzare unicamente accessori approvati. Non collegare il dispositivo a prodotti non compatibili.
- Utilizzare unicamente accessori approvati dal produttore della Scheda WLAN. Oltre ad essere pericoloso, l'uso di altri tipi di dispositivi renderà nulla qualsiasi approvazione garanzia relativa alla Scheda WLAN.
- Utilizzare unicamente le impostazioni regionali appropriate per l'area in cui la Scheda WLAN viene utilizzata al momento. L'uso della Scheda in altre regioni o con un'impostazione regionale non corretta è proibito e può essere illegale.
- Il funzionamento di un qualsiasi dispositivo di trasmissione radio, compresa una Scheda WLAN, può provocare interferenze con la funzionalità di dispositivi medici senza protezione adeguata.
- Non utilizzare la Scheda WLAN a bordo di aerei.
- Non utilizzare la Scheda WLAN presso un punto di rifornimento di carburante.
- Non utilizzare la Scheda WLAN accanto a materiali o chimici infiammabili.
- Non utilizzare la Scheda WLAN durante un'esplosione.
- Non utilizzare la Scheda WLAN qualora l'uso di dispositivi senza filo possa provocare interferenza o costituire un pericolo.
- Non utilizzare la Scheda WLAN laddove è proibito l'uso di cellulari.
- Il forno a microonde compromette considerevolmente le prestazioni di una rete LAN senza fili. Per tale motivo, non usare la Scheda WLAN in un ambiente dove si fa uso di forno a microonde.

## EMC Warning(Dutch)

---

---

### CE Statement and Warnings :

#### **WAARSCHUWING**

Bij installatie en gebruik van deze zender-antennecombinatie kan de blootstellingslimiet van de radiofrequentie van 1 mW/cm<sup>2</sup> overschreden worden op korte afstand van de geïnstalleerde antennes. De gebruiker dient daarom altijd minimaal 20 cm afstand te houden van de antenne.

#### **Belangrijke Veiligheidsinformatie**

---

---

- Lees deze eenvoudige richtlijnen. De regels overtreden kan gevaarlijk of illegaal zijn. SAMSUNG kan niet verantwoordelijk worden gehouden voor schade die is veroorzaakt door overtreding van de regels.
- De in dit document beschreven WLAN Card is goedgekeurd voor gebruik in een draadloos lokaal netwerk.
- Vergeet niet reservekopieën van belangrijke informatie te maken.
- Wanneer u data verzendt of ontvangt, verplaats uw laptopcomputer dan niet. Bij verplaatsing tussen access points (APs) kan de verbinding verbreken.
- De apparatuur dient alleen door gekwalificeerd servicepersoneel gerepareerd te worden.
- Alle draadloze apparatuur kan storing ondervinden, waardoor de werking beïnvloed kan worden.
- Gebruik alleen goedgekeurde accessoires. Sluit geen producten aan die niet compatibel zijn.
- Gebruik alleen accessoires die door de WLAN Card fabrikant goedgekeurd zijn voor gebruik in combinatie met deze specifieke WLAN Card. Het gebruik van andere types maakt elke goedkeuring of garantie die van toepassing is op de WLAN Card ongeldig en kan gevaarlijk zijn.
- Gebruik alleen de regionale instellingen die geschikt zijn voor het gebied waar de WLAN Card op dat moment gebruikt wordt. Het gebruik van de kaart in een ander gebied of met een onjuiste regionale instelling is verboden en kan illegaal zijn.
- Het gebruik van radio-zendapparatuur, waaronder WLAN Cards, kan storing veroorzaken op de functionaliteit van onvoldoende beschermde medische apparatuur.
- Gebruik de WLAN Card niet in een vliegtuig.
- Gebruik de WLAN Card niet bij een tankstation.
- Gebruik de WLAN Card niet in de nabijheid van ontvlambare materialen of chemicaliën.
- Gebruik de WLAN Card niet waar explosies in uitvoering zijn.
- Gebruik de WLAN Card niet wanneer het gebruik van draadloze apparatuur storing of gevaar kan veroorzaken.
- Gebruik de WLAN Card niet waar het gebruik van draadloze terminals verboden is.
- Magnetron-ovens verminderen de werking van wireless LANs drastisch. Gebruik daarom de WLAN Card niet in een omgeving waar een magnetron-oven in gebruik is.

## EMC Warning(Portuguese)

---

### CE Statement and Warnings :

#### ADVERTÊNCIA

Quando instalar e utilizar este conjunto de transmissor e antena, o limite de exposição à frequência de rádio de  $1\text{mW}/\text{cm}^2$  pode ser excedido junto a antenas.  
Por conseguinte, o utilizador deve manter uma distância mínima de 20 cm da antena.

#### Importante Informação de Segurança

---

- Leia estas simples instruções. O não cumprimento das regras pode ser perigoso ou ilegal. A SAMSUNG não será responsabilizada por quaisquer danos provocados pelo não cumprimento das regras.
- A placa WLAN Card descrita neste documento foi aprovada para utilização numa rede de área local sem fio.
- Não se esqueça de fazer cópias de segurança dos dados importantes.
- Quando transferir dados, mantenha o computador portátil imóvel. O *roaming* entre pontos de acesso (APs) pode interromper a ligação.
- O equipamento deve ser reparado apenas por pessoal de serviço qualificado.
- Todos os dispositivos sem fio podem sofrer interferências, o que pode afectar o desempenho.
- Utilize apenas acessórios aprovados. Não ligue produtos incompatíveis.
- Utilize apenas acessórios aprovados pelo fabricante da placa WLAN Card para utilização com esta placa WLAN Card em particular. A utilização de quaisquer outros tipos invalidará qualquer homologação ou garantia aplicável à placa WLAN Card e pode ser perigoso.
- Utilize apenas as definições da região adequadas para a área onde a placa WLAN Card é utilizada actualmente. A utilização da placa em qualquer outra região ou com uma definição de região incorrecta está proibida e pode constituir violação à lei.
- A utilização de qualquer equipamento de transmissão de rádio, incluindo uma placa WLAN Card, pode provocar interferências na funcionalidade de dispositivos médicos protegidos de forma incorrecta.
- Não utilize a placa WLAN Card em aeronaves.
- Não utilize a placa WLAN Card em postos de reabastecimento de combustível.
- Não utilize a placa WLAN Card perto de materiais ou produtos químicos inflamáveis.
- Não utilize a placa WLAN Card onde estejam a ser efectuados trabalhos de decapagem.
- Não utilize a placa WLAN Card quando a utilização de um dispositivo sem fios possa provocar interferências ou constituir perigo.
- Não utilize a placa WLAN Card onde a utilização de terminais celulares for proibida.
- Os fornos de micro-ondas degradam extremamente o desempenho da LAN sem fios. Por isso, não utilize a placa WLAN Card em ambientes onde sejam utilizados fornos de micro-ondas.

## EMC Warning(Spanish)

---

---

### CE Statement and Warnings :

#### **ADVERTENCIA**

Durante la instalación y el uso de esta combinación de transmisor y antenna, el límite de exposición de la frecuencia radio de 1 mW/cm<sup>2</sup> puede ser excedido junto a las antenas instaladas. Por consecuencia, el usuario deberá mantener una distancia mínima de 20 cm de la antena.

### Información Importante de Seguridad

---

---

- Lea estas directrices simples. La contravención de las reglas puede ser peligrosa o ilegal. SAMSUNG no será responsable de cualquier daños causados a resultas de la contravención de las reglas.
- La tarjeta WLAN descrita en este documento fue aprobada para el uso en una red local (LAN) inalámbrica.
- Piense en hacer copias de seguridad de datos importantes.
- Durante la transferencia de datos, no desplace su ordenador. El desplazamiento entre access points (APs) puede cortar la comunicación.
- El equipo debe ser arreglado únicamente por personal de servicio cualificado.
- Todo equipo inalámbrico puede tener interferencias, que pueden afectar el funcionamiento.
- Sólo utilice accesorios aprobados. No conecte accesorios incompatibles.
- Sólo utilice accesorios aprobados por el fabricante de la tarjeta WLAN para el uso en combinación con esta tarjeta específica WLAN. El uso de otros tipos invalidará toda aprobación o garantía aplicables a la tarjeta WLAN y puede ser peligroso.
- Sólo utilice ajustes regionales aptos a la región donde la tarjeta WLAN está utilizada actualmente. El uso de la tarjeta en otra región o con ajustes regionales incorrectos está prohibido y puede ser ilegal.
- El uso de equipos radio de transmisión, incluso tarjetas WLAN, puede causar interferencias en el funcionamiento de equipos médicos sin protección suficiente.
- No utilice la tarjeta WLAN en aeronaves.
- No utilice la tarjeta WLAN en puntos de reabastecimiento de combustible.
- No utilice la tarjeta WLAN cerca de materiales inflamables o sustancias químicas.
- No utilice la tarjeta WLAN donde se efectúan explosiones.
- No utilice la tarjeta WLAN cuando el uso de equipos inalámbricos puede causar interferencias o representar un peligro.
- No utilice la tarjeta WLAN donde el uso de terminales inalámbricos está prohibido.
- Los hornos de microondas disminuyen drásticamente el funcionamiento de las LANs inalámbricas. Por esa razón, no utilice la tarjeta WLAN en un entorno en el que un horno de microondas esté en uso.

<h2>Specifications</h2>			
Model Name	<b>SWL-2300M</b>	<b>SWL-2300N</b>	<b>SWL-2300P</b>
<b>System Interface</b>	MiniPCI Spec 1.0 (Type 3B Form Factor)	CardBus Spec 7.0	PCI Spec 2.2
<b>Frequency Band</b>	2.400 ~ 2.4835GHz(Subject to local regulations)	2.400 ~ 2.4835GHz(Subject to local regulations)	2.400 ~ 2.4835GHz(Subject to local regulations)
<b>Operating Voltage</b>	3.3Vdc ( $\pm 5\%$ )	3.3V $\pm 5\%$	5V $\pm 5\%$
<b>Current Consumption</b>	Receive mode : 315mA (Typical)	Receive : 310mA (Typical)	Receive : 315mA (Typical)
	Transmit mode: 360mA (Typical)	Transmit: 370mA (Typical)	Transmit : 360mA (Typical)
<b>Data Rate</b>	1, 2, 5.5 or 11Mbps	1, 2, 5.5 or 11Mbps	1, 2, 5.5 or 11Mbps
<b>Spreading</b>	DSSS(Direct Sequence Spread Spectrum)	DSSS(Direct Sequence Spread Spectrum)	DSSS(Direct Sequence Spread Spectrum)
<b>Output Power</b>	15dBm(40mW) for 22MHz Bandwidth	40mW(16dBm) for 22MHz Bandwidth, 7mW/MHz	15dBm(32mW) for 22MHz Bandwidth
<b>Receive Sensitivity</b>	-86dBm at 11Mbps (Typical)	-86dBm(Typical) at 11Mbps	-86dBm at 11Mbps (Typical)
<b>Security</b>	40-bit/128-bit WEP Encryption	40-bit/128-bit WEP Encryption	40-bit/128-bit WEP Encryption
<b>Antenna</b>	SMT Ultra Miniature Coaxial Connector 2 pieces	Dual antennas supporting diversity	External 5dBi Patch Antenna with left-turn SMA connector and 1.5m cable
<b>Available Drivers</b>	Microsoft Windows 98SE/ME/2000/XP/CE	Microsoft Windows 98SE/ME/2000/XP/XPSP1	Microsoft Windows 98SE/ME/2000/XP/CE
<b>Standards</b>	IEEE 802.11b	IEEE 802.11b	IEEE 802.11b
<b>Media Access Protocol</b>	CSMA/CA	CSMA/CA	CSMA/CA
<b>Temperature Range</b>	Operating: 0~55°C (32 ~131°F), Storage : -20~70°C (-4°F~158°F)	Operating : 0~45°C (32 ~ 113°F), Storage : -25~70°C (-13~158°F)	Operating: 0~55°C (32~131°F), Storage : -20~70°C (-4~158°F)
<b>Humidity</b>	10% to 90% Non-condensing	10% to 90% Non-condensing	10% to 90% Non-condensing
<b>Operating Range</b> (1024 bytes file transfer)	Open Space : 150m(500ft)at 11Mbps, 200m(660ft) at 2Mbps Closed Office: 30m(100ft) at 11Mbps, 50m(160ft) at 2Mbps	Open Space : 150m(500ft) at 11Mbps, 200m(660ft) at 2Mbps Closed Office: 30m(100ft) at 11Mbps, 50m(160ft) at 2Mbps	Open Space : 150m(500ft) at 11Mbps, 200m(660ft) at 2Mbps Closed Office: 30m(100ft) at 11Mbps, 50m(160ft) at 2Mbps
<b>Dimensions</b>	59.6mm×44.6mm×5.0mm	109mmx54mmx5mm	126.8mm×70.0mm×18.0mm
<b>Certifications &amp; Regulatory Approvals</b>		Wi-Fi certified Korea	

## Wireless LAN Card driver & utility Installation Procedure.

1. If you insert the MagicLAN Installation CD into the CD-ROM drive, software will launch automatically. Then, click on the ‘Install MagicLAN Driver’.



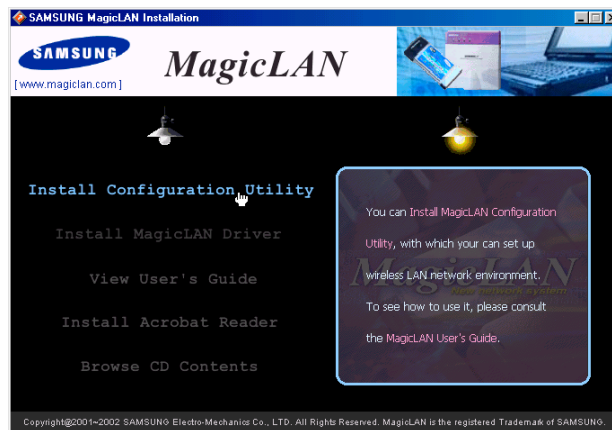
2. You can see the pictures of Wireless LAN Cards according to model names. Click on the model name to install it's driver.



3. You can see the list of Operating System in the right screen. Click on the Operating System that your computer system is using. You can click **Continue Anyway** or **Yes** in the ‘Hardware Installation’ Message box or in the ‘Digital Signature Not Found’ Message box.




4. After installing driver, click on 'MENU' and 'Install Configuration Utility' and you can install configuration utility. After installing driver and utility, insert Wireless LAN Card.(notice that in case of PCI product like SWL-2300M/P , you must power off before inserting Wireless LAN Card into the system)

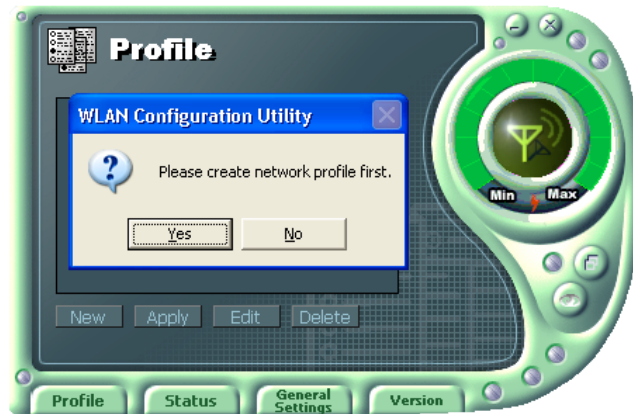


5. Your computer system recognizes the Samsung Wireless LAN Card. If **Found New Hardware Wizard** appears, just click **Next** to install the driver.

6. Now you can see MagicLAN tray icon(  ) at the right bottom of your computer screen. In Windows 2000 or XP, you must reboot the system to see the tray icon.

7. Click MagicLAN tray icon(  ). Then the utility requests you to create or select the new profile. You can follow the instructions to use Wireless LAN as peer-to-peer(802.11 Ad-hoc) or infrastructure communications.





For more details about Windows CE, click on the “View User’s Guide”.

### **Main Window of Wireless LAN Configuration Utility**

After finishing the installation of Samsung Wireless LAN Card driver and configuration utility, you can see the tray icon at the right bottom of your computer screen. Clicking on that icon, you will see the graphical main window of configuration utility.



**Profile:** Profile is the name of the current profile that configuration utility is using.

**Link Status :** Link Status explains whether the client station is well connected or not to Access Point in infrastructure mode or master station in ad-hoc mode .



**SSID** : SSID is the name of the network that your computer system is connected to.

**Operating Mode** : Operating mode describes the topology of the network that your client station is connected to. You can choose infrastructure mode or ad-hoc mode.

**BSSID** : BSSID is the physical address of Access Point in case of infrastructure mode and the randomly generated value in case of 802.11 Ad-hoc mode.

**Channel** : Channel shows the channel number that is the channel in use for the communications between the clients and AP or between the clients only. In case of the Infrastructure/802.11 Ad-hoc Mode, the channel number is scanned automatically (You don't need to set the channel number).

**WEP** : WEP shows that WEP encryption is enabled or disabled. When WEP is enabled, your computer system protects the illegal access to the encrypted wireless networks.

**Power Saving** : Power Saving shows that Power Saving Mode is enabled or disabled.

**Physical Address** : Physical Address(MAC Address) is the unique identification number (6 bytes in size) for the Wireless LAN card.

**IP Address** : IP Address is an address used to send data from one computer to another to create the network of several computers. IP address is unique for every network card installed on a computer to identify it from other computers.


**Subnet Mask** : Subnet Mask is an address that enables along with an IP Address to share a network Address within the LAN of company.

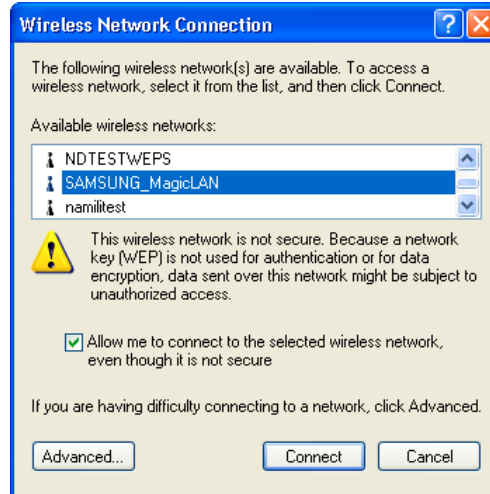
**Gateway** : Gateway is a network point playing a role as a gateway to enter the other network.

**DNS** : DNS is the system that transforms the name of an Internet domain to the corresponding IP Address. IP Address is actually needed to locate a computer/server on the Internet.

**Adapter Name** : Adapter name shows the kind of WLAN card that the user is using now.

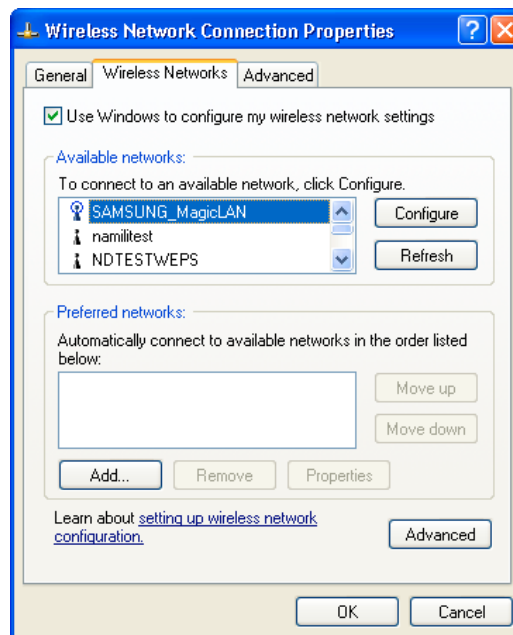
## Zero Configuration of Windows XP

1. Click **Wireless Network Connection** icon  displayed on the right bottom of desktop.

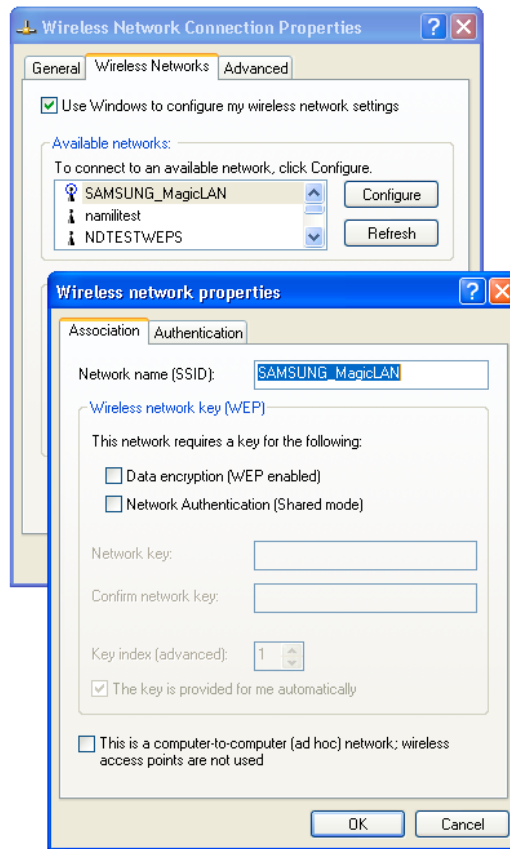


2. When you are using DHCP, just select one of Access Points in the **Available wireless networks** in **Wireless Network Connection** dialog window.

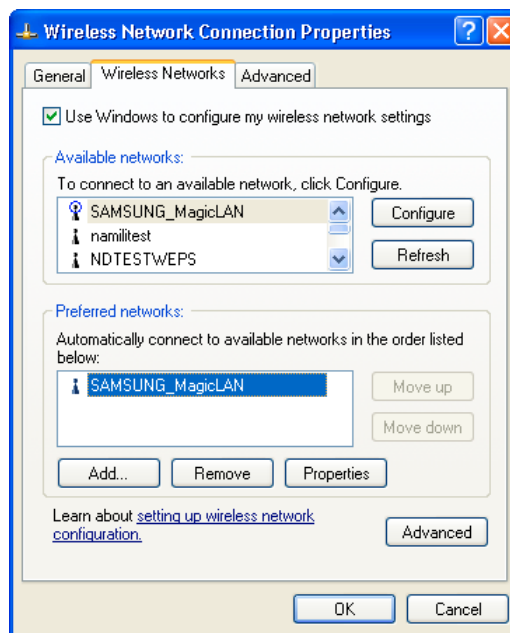
3. To manually set IP address, WEP and other wireless configuration, click on **Advanced** of **Wireless Network Connection** dialog window and select **Wireless Networks** in **Wireless Network Connection Properties** dialog window.



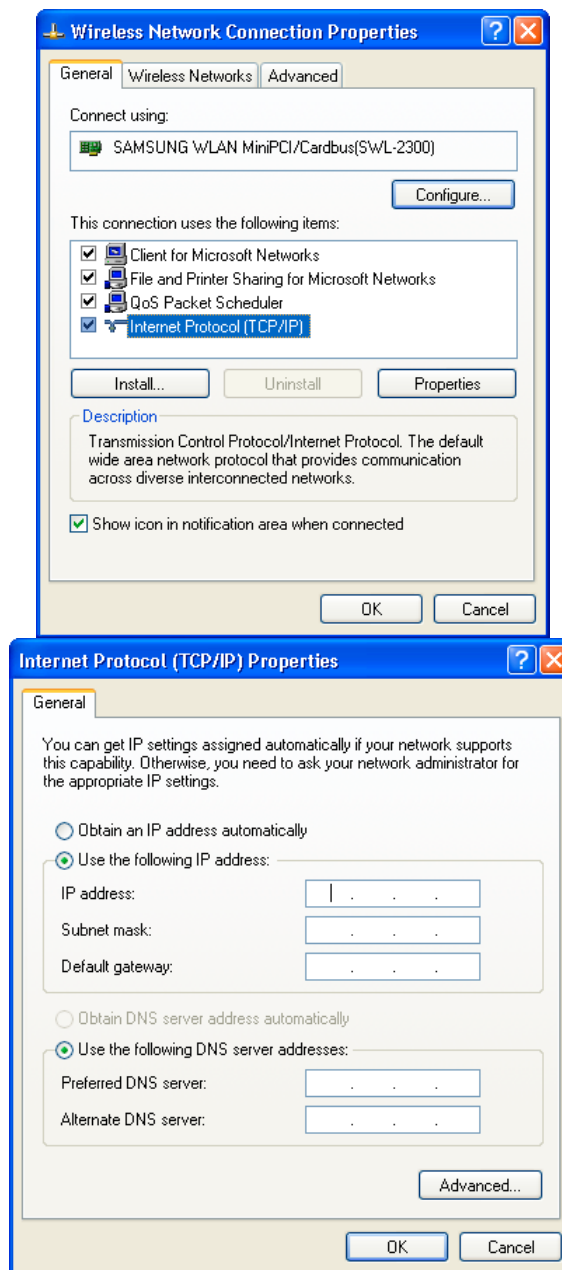
4. After selecting one of the **Available networks**, click **Configure**. Set the SSID and parameters that you want to modify and then click on **OK**.



5. The Access Point that you selected will be displayed on the **Preferred Networks in Wireless Network Connection Properties** dialog window



6. Click on the **General** Tab. After double-clicking the “**Internet Protocol(TCP/IP)**”, set TCP/IP parameters such as IP Address, Gateway and DNS. Then click on OK in **Internet Protocol(TCP/IP) Properties** dialog window. Finally, click on **OK** in **Wireless Network Connection Properties** dialog window.



### Available Channels of Wireless LAN

Channel	Frequenc	Korea	FCC	Canada	ETSI	Spain	France	Japan
1	2412MH	○	○	○	○	○		○
2	2417MH	○	○	○	○	○		○
3	2422MH	○	○	○	○	○		○
4	2427MH	○	○	○	○	○		○
5	2432MH	○	○	○	○	○		○
6	2437MH	○	○	○	○	○		○
7	2442MH	○	○	○	○	○		○
8	2447MH	○	○	○	○	○		○
9	2452MH	○	○	○	○	○		○
10	2457MH	○	○	○	○	○	○	○
11	2462MH	○	○	○	○	○	○	○
12	2467MH	○			○	○	○	○
13	2472MH	○			○	○	○	○
14	2484MH							○

삼성 매직랜

---

한글 매뉴얼

## 주의 사항1

---

이 사용설명서는 삼성전기의 서면 승인 없이는 어떤 형식으로도 이 설명서의 일부 또는 전부를 무단으로 복제하거나 사용할 수 없습니다.

이 사용설명서의 내용은 예고 없이 바뀔 수 있습니다. 삼성전자 홈페이지를 방문하시면 가장 최근의 드라이버나 매뉴얼을 무료로 다운로드 받을 수 있습니다.

이 사용설명서의 특허권, 상표, 저작권, 지적 소유권 등은 삼성전기에 있습니다.

삼성전기와 사용권 계약서에 밝힌 사항을 제외하고는 이 사용설명서의 구입이 특허권, 상표, 저작권, 지적 소유권 등의 양도를 의미하는 것은 아닙니다.

매직랜은 삼성전자 무선 랜의 등록상표입니다.

Microsoft, MS-DOS, Windows, 그리고 Windows NT는 Microsoft Corporation의 등록상표입니다.

여기에 언급된 다른 제품이나 회사 이름은 각 소유자의 등록상표일 수 있습니다.

<http://www.MagicLAN.co.kr/>

### 기술지원

Tel : +82-31-218-2416,8,9,20 Fax : +82-31-218-2431

### 국내영업

Tel : +82-31-218-2442~6 Fax : +82-31-218-2414

Copyright © 1999-2003 Samsung Electro-Mechanics, Co., Ltd.

All rights reserved.

## 주의 사항2

---

- 다음과 같은 제한 사항을 주의 깊게 읽어 보십시오. 이를 어길 때에는 위험한 상황에 처할 수 있고, 또한 법적인 처벌을 받을 수도 있습니다. 그에 따라



발생되는 피해에 대해서는 삼성전기가 책임지지 않습니다.

- 이 사용설명서에서 설명하는 무선 랜카드를 무선랜 네트워크에서 사용되도록 승인된 것입니다.
- 중요한 데이터는 백업해 두는 것을 잊지 마십시오.
- 데이터를 전송할 때는 컴퓨터를 이동하지 마십시오. 액세스 포인트 간에 로밍을 할 경우 연결이 끊어질 수 있습니다.
- 공인된 수리 전문가만이 무선 랜카드를 수리할 수 있습니다.
- 모든 무선 장치들은 주파수 간섭을 받을 수 있고, 그 결과 성능에 영향을 미칠 수도 있습니다.
- 당사의 3V CARD를 사용하는 경우에는 Note PC가 3V PC CARD를 지원해야 합니다.
- 무선 랜카드 제조업체에 의해서 승인된 부속품만을 특정한 무선 랜카드와 함께 사용할 수 있습니다. 다른 형태의 것들을 사용하게 되면 무선 랜카드에 대한 보증을 받을 수 없습니다.
- 현재 사용하고 있는 무선랜 지역 설정과 일치하는 지역에서 사용해야 합니다. 무선 랜카드로 설정된 지역과 다른 곳이나 부적절한 지역 설정을 사용하는 것은 금지되어 있고, 법적인 처벌을 받게 될 수도 있습니다.
- 무선 랜카드를 포함한 어떤 종류의 무선 장치를 사용하게 되면 의료 장비의 기능에 간섭을 일으킬 수 있습니다.
- 비행기 운항 중에는 무선 랜카드를 사용하지 마십시오.
- 연료나 화학 약품과 가까운 곳에서 무선 랜카드를 사용하지 마십시오.
- 폭발 현장에서는 무선 랜카드를 사용하지 마십시오.
- 무선 장치를 사용할 때 간섭이나 위험이 발생할 수 있는 경우에는 무선 랜카드를 사용하지 마십시오.
- 임의로 분해 시 발생하는 문제에 대해서는 책임을 지지 않습니다.

Specifications			
Model Name	SWL-2300M	SWL-2300N	SWL-2300P
System Interface	MiniPCI Spec 1.0 (Type 3B Form Factor)	CardBus Spec 7.0	PCI Spec 2.2

<b>Frequency Band</b>	2.400 ~ 2.4835GHz(Subject to local regulations)	2.400 ~ 2.4835GHz(Subject to local regulations)	2.400 ~ 2.4835GHz(Subject to local regulations)
<b>Operating Voltage</b>	3.3Vdc (±5%)	3.3V±5%	5V±5%
<b>Current Consumption</b>	Receive mode : 315mA (Typical)	Receive : 245mA (Typical)	Receive mode : 315mA (Typical)
	Transmit mode: 360mA (Typical)	Transmit: 310mA (Typical)	Transmit mode: 360mA (Typical)
<b>Data Rate</b>	1, 2, 5.5 or 11Mbps	1, 2, 5.5 or 11Mbps	1, 2, 5.5 or 11Mbps
<b>Spreading</b>	DSSS(Direct Sequence Spread Spectrum)	DSSS(Direct Sequence Spread Spectrum)	DSSS(Direct Sequence Spread Spectrum)
<b>Output Power</b>	16dBm(40mW) for 22MHz Bandwidth	40mW(16dBm) for 22MHz Bandwidth, 7mW/MHz	16dBm(40mW) for 22MHz Bandwidth
<b>Receive Sensitivity</b>	-86dBm at 11Mbps (Typical)	-86dBm(Typical) at 11Mbps	-86dBm at 11Mbps (Typical)
<b>Security</b>	40-bit/128-bit WEP Encryption	40-bit/128-bit WEP Encryption	40-bit/128-bit WEP Encryption
<b>Antenna</b>	SMT Ultra Miniature Coaxial Connector 2 pieces	Dual antennas supporting diversity	External 5dBi Patch Antenna with left-turn SMA connector and 1.5m cable
<b>Available Drivers</b>	Microsoft Windows 98SE/ME/2000/XP/CE	Microsoft Windows 98SE/ME/2000/XP/XPS1/CE	Microsoft Windows 98SE/ME/2000/XP/CE
<b>Standards</b>	IEEE 802.11b	IEEE 802.11b	IEEE 802.11b
<b>Media Access Protocol</b>	CSMA/CA	CSMA/CA	CSMA/CA
<b>Temperature Range</b>	Operating: 0~55℃ (32 ~131°F), Storage : -20~70℃ (-4°F~158°F)	Operating : 0~45℃ (32 ~ 113°F), Storage : -25~70℃ (-13~158°F)	Operating: 0~55℃ (32~131°F), Storage : -20~70℃ (-4~158°F)
<b>Humidity</b>	10% to 90% Non-condensing	10% to 90% Non-condensing	10% to 90% Non-condensing
<b>Operating Range</b> (1024 bytes file transfer)	Open Space : 150m(500ft)at 11Mbps, 200m(660ft) at 2Mbps Closed Office: 30m(100ft) at 11Mbps, 50m(160ft) at 2Mbps	Open Space : 150m(500ft) at 11Mbps, 200m(660ft) at 2Mbps Closed Office: 30m(100ft) at 11Mbps, 50m(160ft) at 2Mbps	Open Space : 100m(330ft) at 11Mbps, 150m(500ft) at 2Mbps Closed Office: 20m(70ft) at 11Mbps, 30m(100ft) at 2Mbps
<b>Dimensions</b>	59.6mm×44.6mm×5.0mm	109mmx54mmx5mm	126.8mm×70.0mm×18.0mm
<b>Certifications &amp; Regulatory Approvals</b>		Wi-Fi certified Korea	

### 무선랜 카드 드라이버 및 유틸리티 설치 순서.

1. 제공되는 CD를 넣으시면, 자동 실행됩니다. 여기서, 'MagicLAN Driver 설치'를 클릭하십시오.



2. 해당 카드의 모델명에 따라 제품의 사진을 볼 수 있으며, 드라이버를 설치하기 위해서는 해당 카드의 모델명을 클릭합니다.



3. 화면 오른쪽에 나타난 Operating System 중에서 설치하고자 하는 OS를 클릭합니다. 설치 중간에 만일 '하드웨어 설치' 또는 '디지털 서명을 찾을 수 없음'이라는 화면이 뜨더라도 '계속' 또는 '예'를 눌러주십시오.



4. 드라이버 설치 후, 'MENU' 버튼과 'Configuration Utility 설치'를 클릭하여 유틸리티를 설치합니다. 드라이버와 유틸리티 설치가 끝나면 카드를 삽입합니다. (주의: SWL-2300M/P와 같은 PCI 제품은 시스템 전원을 끄고 카드를 삽입해야 합니다.)



5. 카드를 인식하고, ‘새 하드웨어 검색 마법사’가 뜨면 ‘다음’을 눌러서 드라이버를 설치합니다.

6. 이제 화면 오른쪽 하단에서 트레이 아이콘(📶)을 확인할 수 있습니다. Windows 2000이나 XP의 경우에는 트레이 아이콘을 띄우기 위해서 재부팅이 필요합니다.

7. 삼성 트레이 아이콘(📶)을 클릭하면 “먼저 프로파일을 생성하십시오.”라는 메시지가 뜹니다. 계속 차례대로 지시에 따라서 설정을 하면, 피어-투-피어(802.11 ad-hoc)나 infrastructure 통신을 사용할 수 있습니다.



Windows CE에 대해 좀 더 자세한 사항을 보기 위해서는 매직랜 설치 CD의 ‘사용자 설명서 보기’를 참조하십시오.

## 무선랜 설정 프로그램의 메인 화면 구성

환경설정 유틸리티는 삼성 무선랜 카드 설치프로그램을 실행할 때 설치가 됩니다. 사용 중에는 바탕화면의 우측하단에 아이콘이 나타나는 것을 볼 수 있고, 아이콘을 클릭하면 아래와 같은 화면이 나타나게 됩니다. 여기서 현재 설정되어 있는 무선랜 카드의 설정을 확인할 수 있습니다.



다음은 무선 랜 환경설정 화면에서 볼 수 있는 각 변수들의 의미를 설명합니다.

**프로파일** : 사용자 임의로 지정하는 것으로서, 각각의 프로파일들을 구분하기 위한 임의의 이름을 나타냅니다. 그러므로 각각의 프로파일이름 설정 시 가지고 있는 내용을 잘 보내줄 수 있는 이름을 사용하십시오.

**연결상태** : Link Status는 클라이언트가 ESS에 연결되어 있는 상태를 보여줍니다. (특히 AP와 802.11Ad-hoc에서 AP/Station 들의 연결 상태를 표시합니다)

**SSID** : SSID 변수는 무선 랜 네트워크를 구성하는 그룹 명을 가리키는 것으로, ESSID라고도 합니다.

**작동모드** : Infrastructure모드(AP를 통한 각 클라이언트들의 연결), 802.11Ad-hoc/Ad-hoc모드(각 클라이언트들간의 직접연결) 세가지가 있습니다.

**BSSID** : Infrastructure Mode에서는 AP의 Physical Address를 나타내며 802.11 Ad-hoc에서는 Random Generation값이 됩니다.

**채널** : 무선 랜 네트워크에서 클라이언트와 AP 또는 클라이언트끼리 통신하는데 사용하는 채널 값을 나타내는 것입니다. 단,네트워크 모드가 infrastructure/802.11Ad-hoc으로 설정되어 있을 때는 채널을 자동으로 찾게 됩니다.

**WEP** : AP가 각 클라이언트들의 인증을 위한 암호 설정 상태입니다. 즉 네트워크로부터의 인증되지 않은 접근을 암호를 설정함으로써 거부합니다.

**절전모드** : 현재 절전모드(power saving)의 여부를 나타냅니다.

**Physical Address** : 현재 사용자의 무선LAN카드의 고유의 Physical어드레스를 나타냅니다.

**IP 주소** : 인터넷상의 한 컴퓨터에서 다른 컴퓨터로 데이터를 보내는데 사용되는 프로토콜로서, 인터넷상의 각 컴퓨터들은 다른 컴퓨터와 구별될 수 있도록 적어도 한 개 이상의 고유한 주소를 갖습니다.


**서브넷 마스크:** 회사내의 LAN내에서 한 네트워크의 주소를 공유 시키기 위해 체계적인 IP주소가 부여된 상태를 말한다.

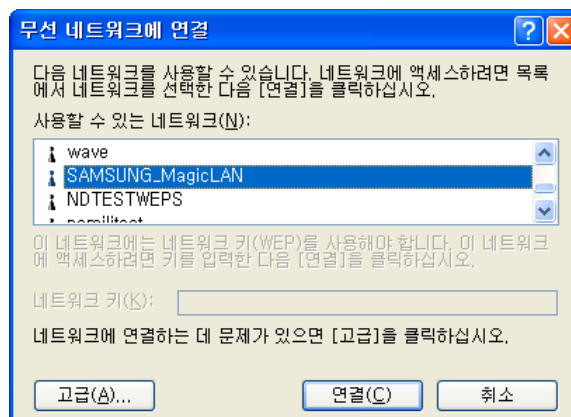
**게이트웨이 :** 어떤 네트워크로 들어가는 입구 역할을 하는 네트워크 포인트입니다.

**DNS :** 인터넷 도메인 이름들의 위치를 알아내기 위한 IP 주소로 바꾸어주는 시스템입니다. 도메인 이름은 인터넷 주소로서 사람들이 기억하기 쉽고, 의미 있게 붙인 이름이지만, 인터넷에서 어떤 컴퓨터를 실제로 찾기 위해서는 숫자 체계로 된 IP 주소가 필요합니다.

**어댑터 이름 :** 현재 사용자가 사용중인 무선 랜 카드의 종류를 나타냅니다.

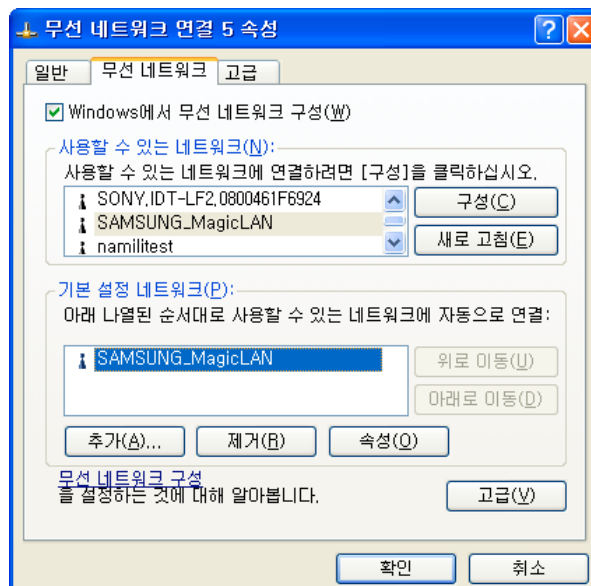
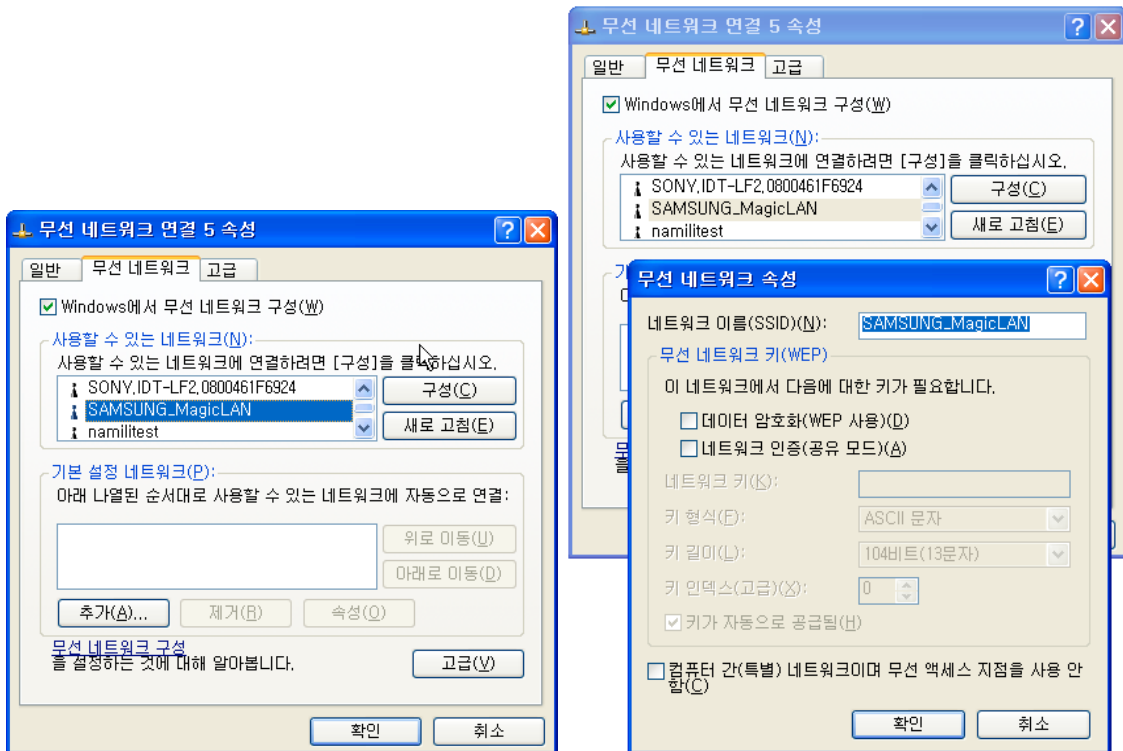
## Windows XP의 Zero Configuration

1. 바탕화면의 오른쪽 맨 하단에 있는 Tray Icon중에서 ‘무선 네트워크 연결’  을 클릭하십시오.

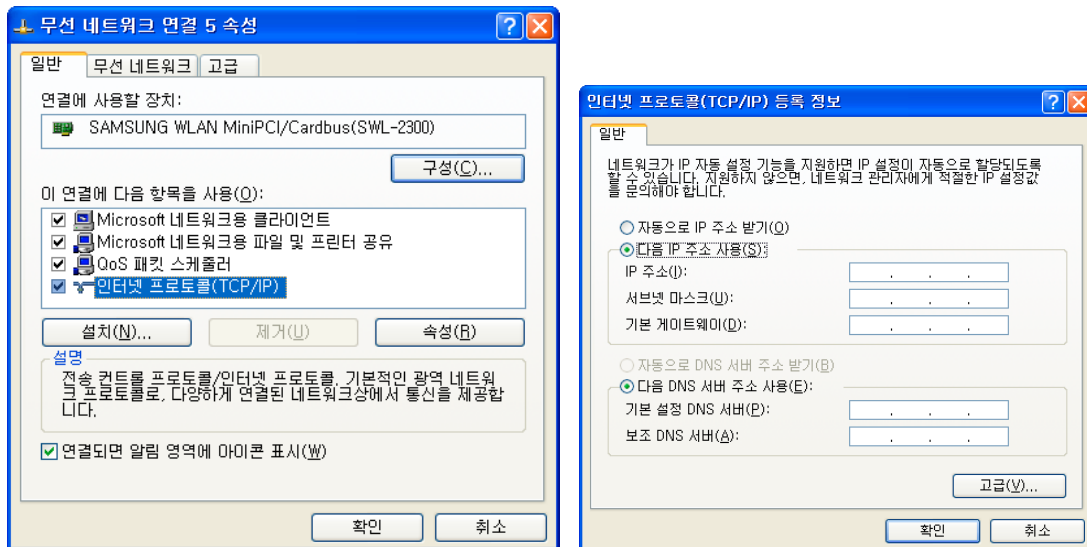


2. DHCP를 이용하실 경우에는 위의 '무선 네트워크에 연결' 메시지 상자에서 연결할 AP를 바로 선택하시면 작업이 완료됩니다.

3. 수동 IP설정이나 WEP, 특별한 환경구성을 할 경우에는 위 그림에서 '고급' 버튼을 클릭하고 '무선 네트워크' 탭에서 '사용할 있는 네트워크'에서 AP를 하나 선택한 다음 '구성'버튼을 클릭하십시오. 이후 나오는 '무선 네트워크 연결 속성'메시지 상자에서 SSID등 필요한 사항을 입력하고 '확인'버튼을 클릭하시면 '기본 설정 네트워크'에 선택한 AP가 추가된 것을 보실 수 있습니다.



4. 그리고, '일반' 탭을 클릭하고 '인터넷 프로토콜(TCP/IP)를 더블클릭해서 IP주소, 게이트웨이, DNS 구성값을 입력한 후 '확인'버튼을 클릭하고 한번 더 '확인'버튼을 클릭하면 모든 작업이 성공적으로 완료된 것입니다.



### 무선랜의 국가별 사용 채널

채널	중심주파수	한국	미국	캐나다	유럽	프랑스	스페인	일본
1	2412MHz	○	○	○	○		○	○
2	2417MHz	○	○	○	○		○	○
3	2422MHz	○	○	○	○		○	○
4	2427MHz	○	○	○	○		○	○
5	2432MHz	○	○	○	○		○	○
6	2437MHz	○	○	○	○		○	○
7	2442MHz	○	○	○	○		○	○
8	2447MHz	○	○	○	○		○	○
9	2452MHz	○	○	○	○		○	○
10	2457MHz	○	○	○	○	○	○	○
11	2462MHz	○	○	○	○	○	○	○
12	2467MHz	○			○	○	○	○
13	2472MHz	○			○	○	○	○
14	2484MHz							○