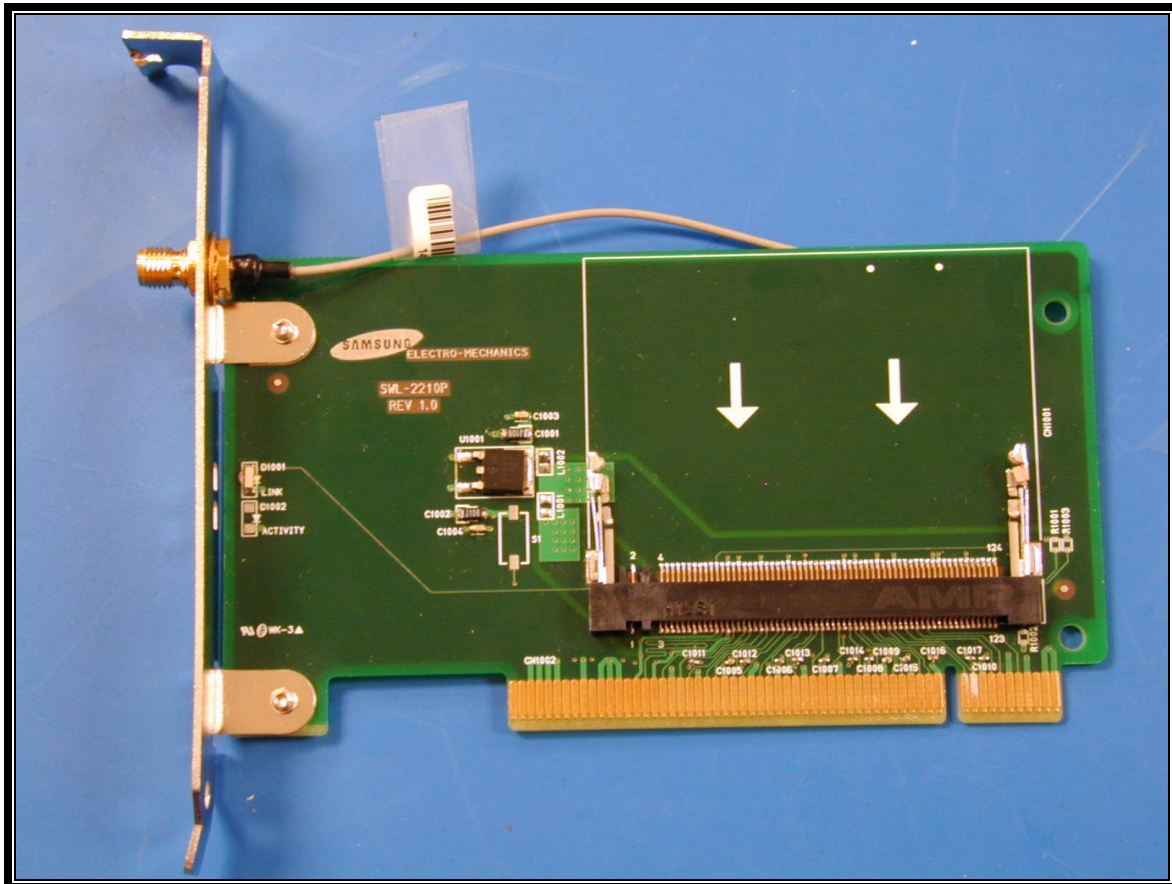


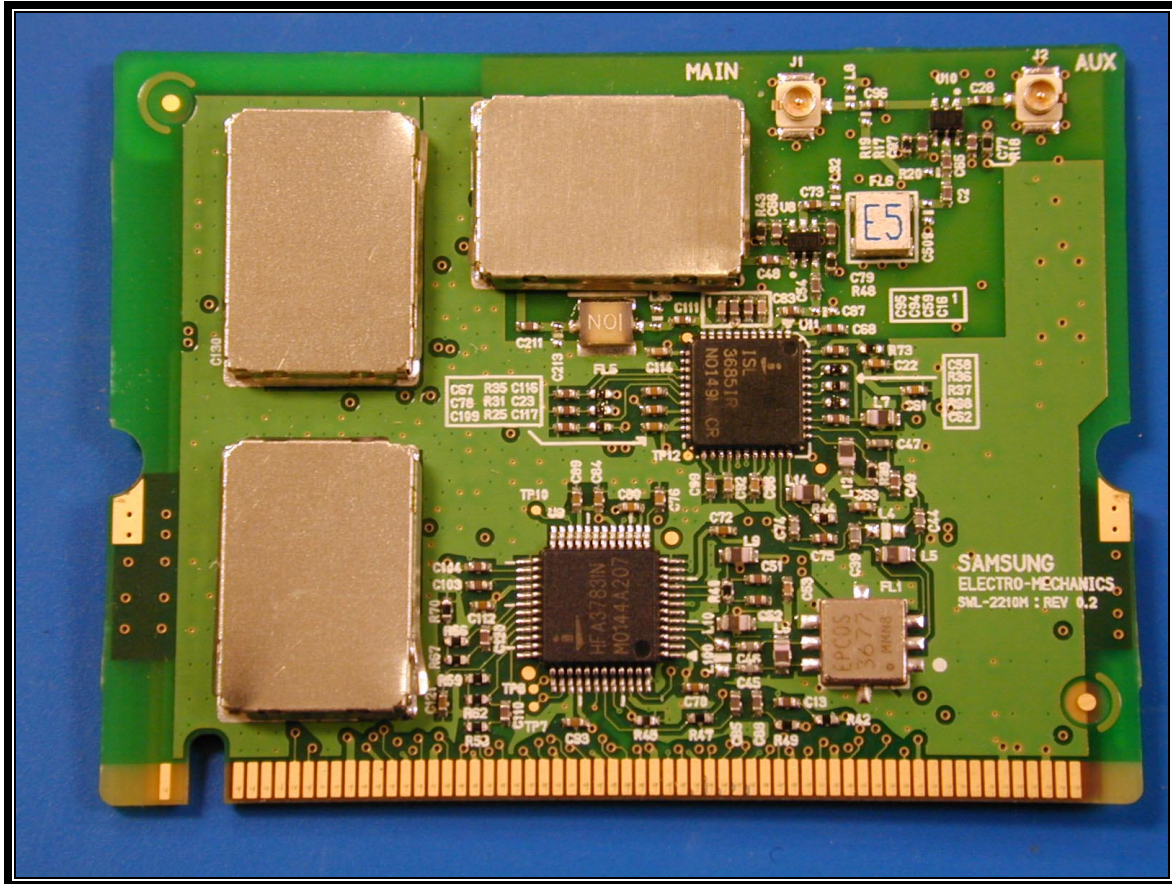
APPENDIX M: INTERNAL PHOTOGRAPHS



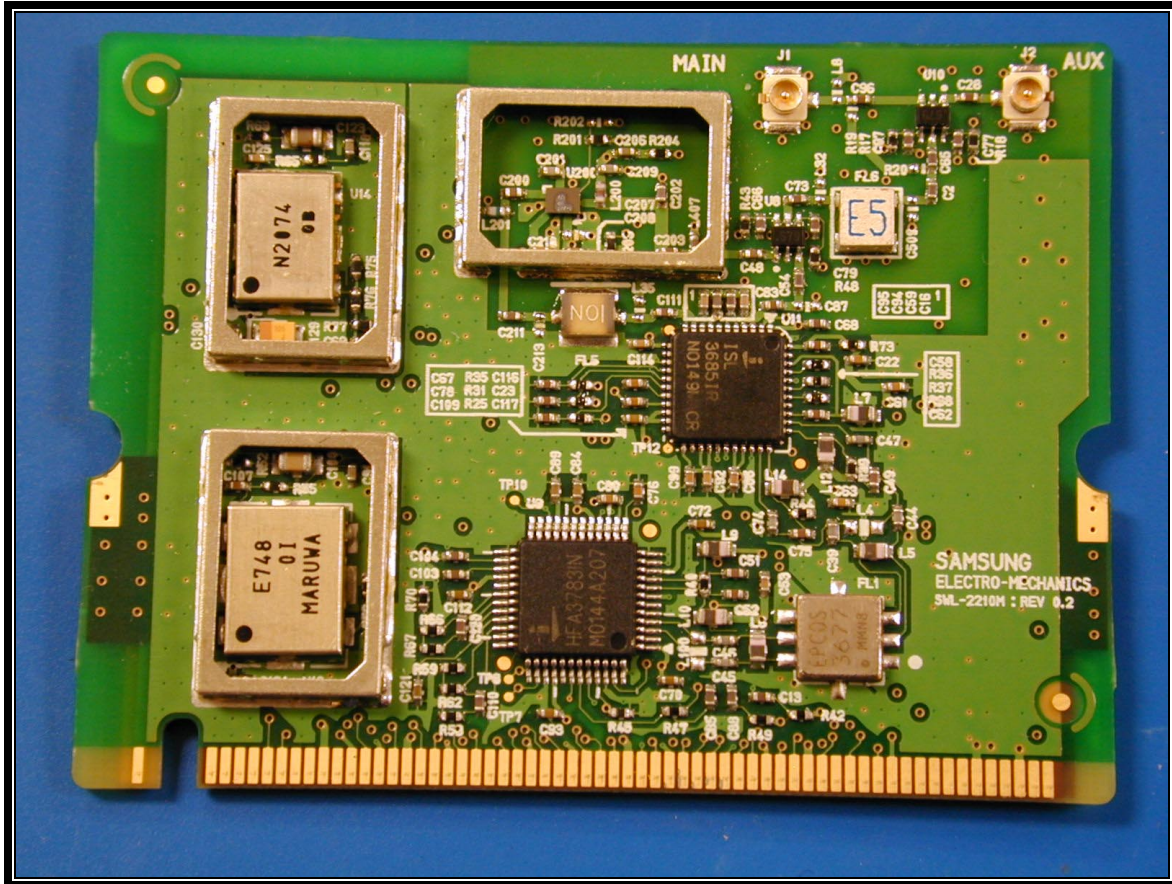
PHOTOGRAPH 9: FRONT VIEW SWL-2210P WITHOUT SWL-2210M

Rhein Tech Laboratories
360 Herndon Parkway
Suite 1400
Herndon, VA 20170
<http://www.rheintech.com>

Report number: 2002120
FCC: Part 15.247
Industry Canada: RSS-210
FCC ID: E2X-SWL2210P
M/N: SWL-2210P



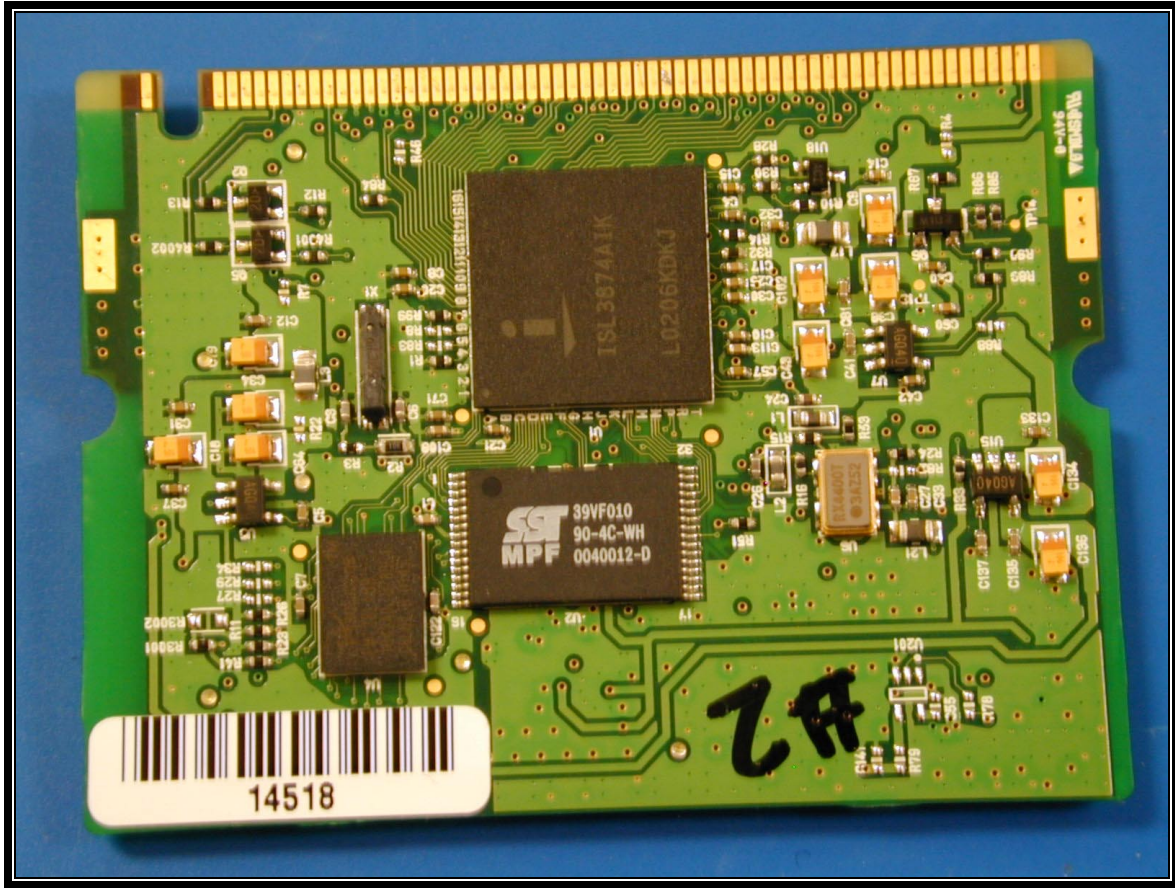
PHOTOGRAPH 10: FRONT VIEW OF SWL-2210M WITH SHIELDS



PHOTOGRAPH 11: FRONT VIEW OF SWL-2210M WITHOUT SHIELDS

Rhein Tech Laboratories
360 Herndon Parkway
Suite 1400
Herndon, VA 20170
<http://www.rheintech.com>

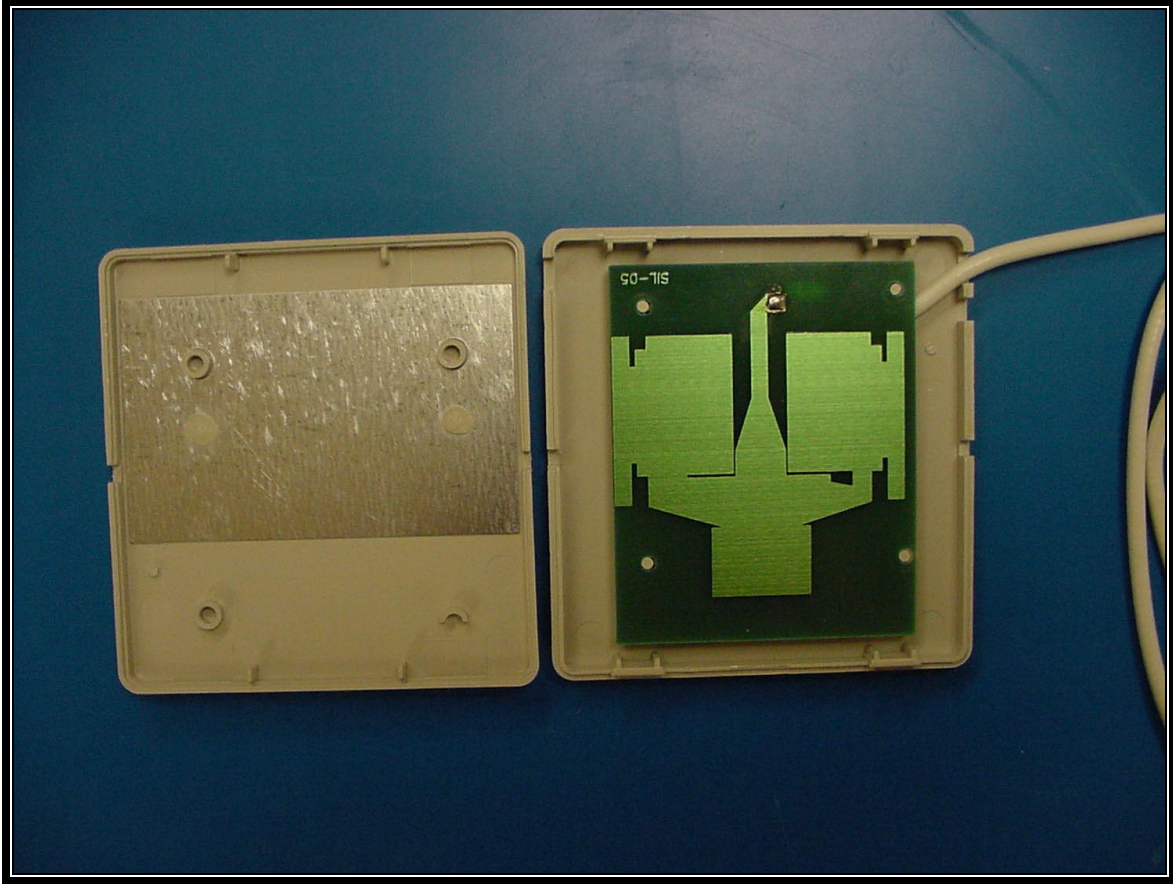
Report number: 2002120
FCC: Part 15.247
Industry Canada: RSS-210
FCC ID: E2X-SWL2210P
M/N: SWL-2210P



PHOTOGRAPH 12: BACK VIEW OF SWL-2210M

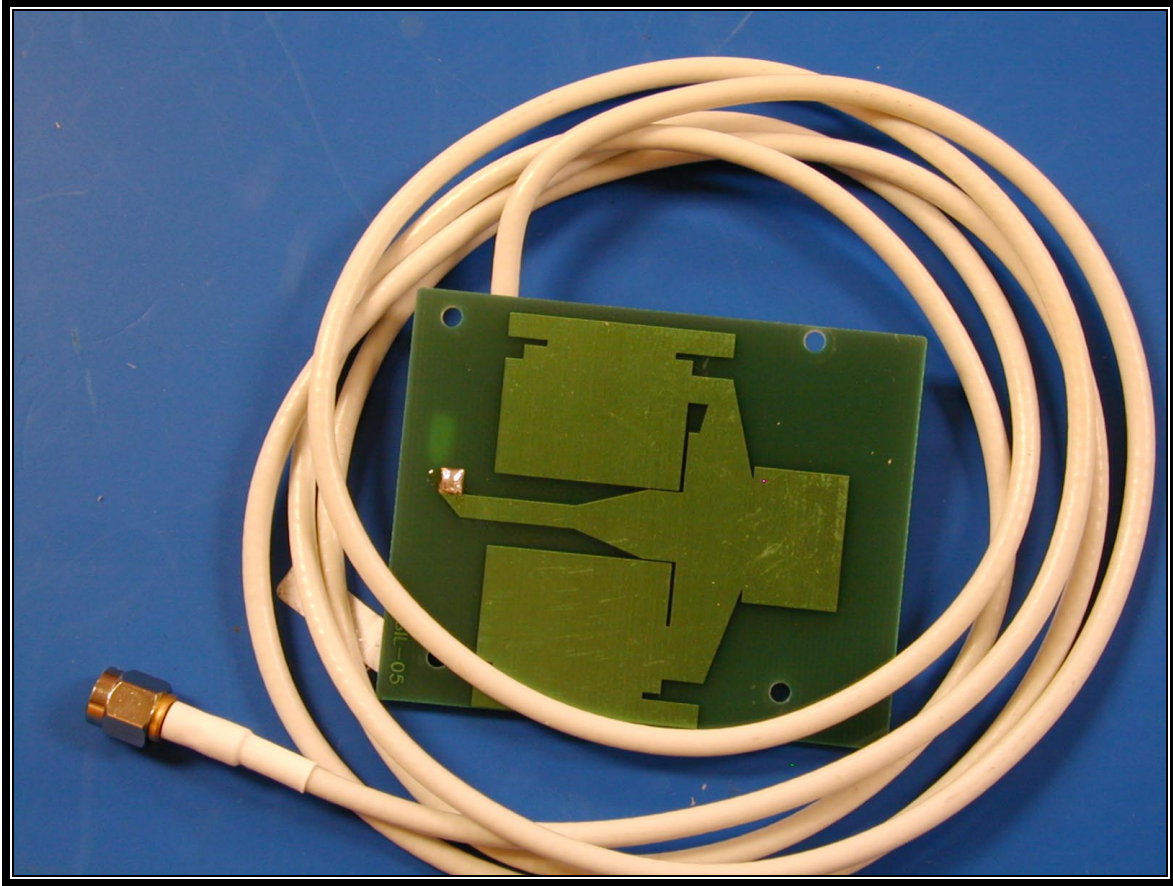
Rhein Tech Laboratories
360 Herndon Parkway
Suite 1400
Herndon, VA 20170
<http://www.rheintech.com>

Report number: 2002120
FCC: Part 15.247
Industry Canada: RSS-210
FCC ID: E2X-SWL2210P
M/N: SWL-2210P



PHOTOGRAPH 13: PCB OF PATCH ANTENNA

I

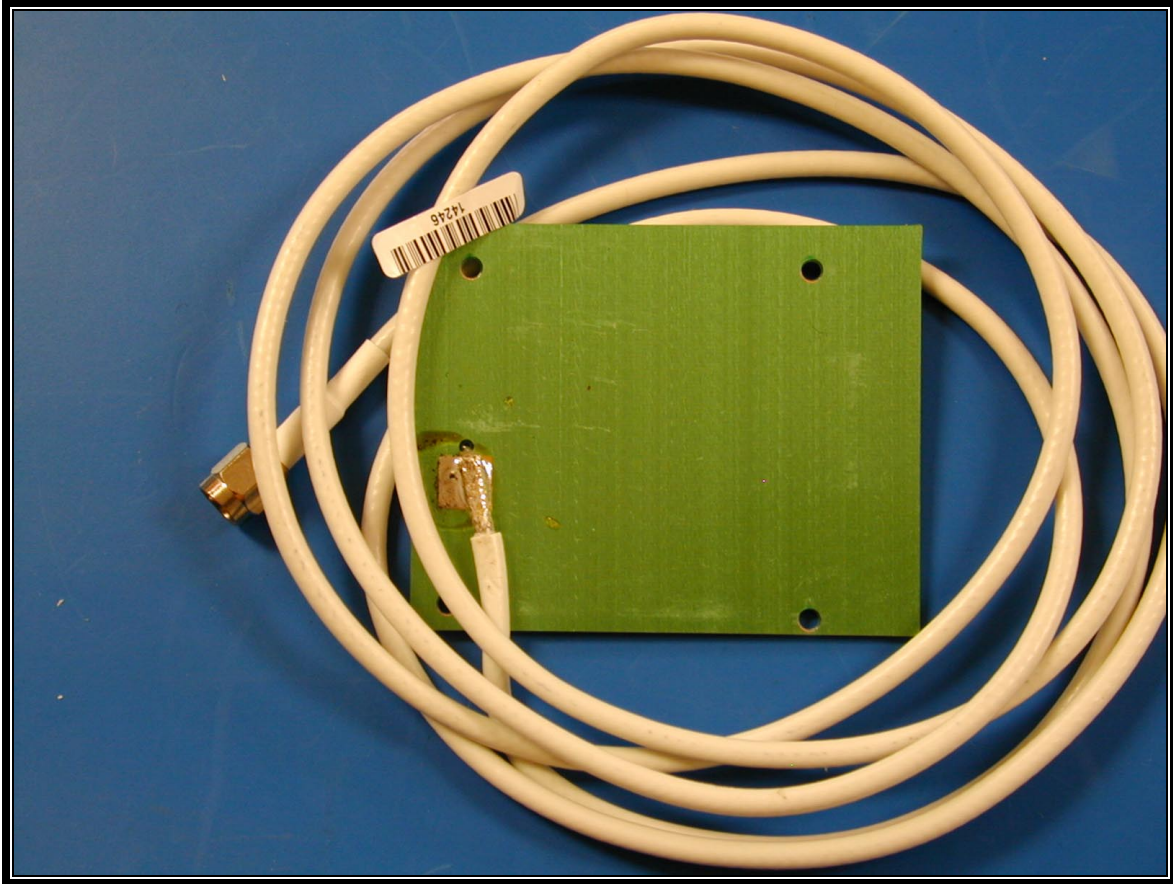


PHOTOGRAPH 14: FRONT PCB OF ANTENNA

Rhein Tech Laboratories
360 Herndon Parkway
Suite 1400
Herndon, VA 20170
<http://www.rheintech.com>

Report number: 2002120
FCC: Part 15.247
Industry Canada: RSS-210
FCC ID: E2X-SWL2210P
M/N: SWL-2210P

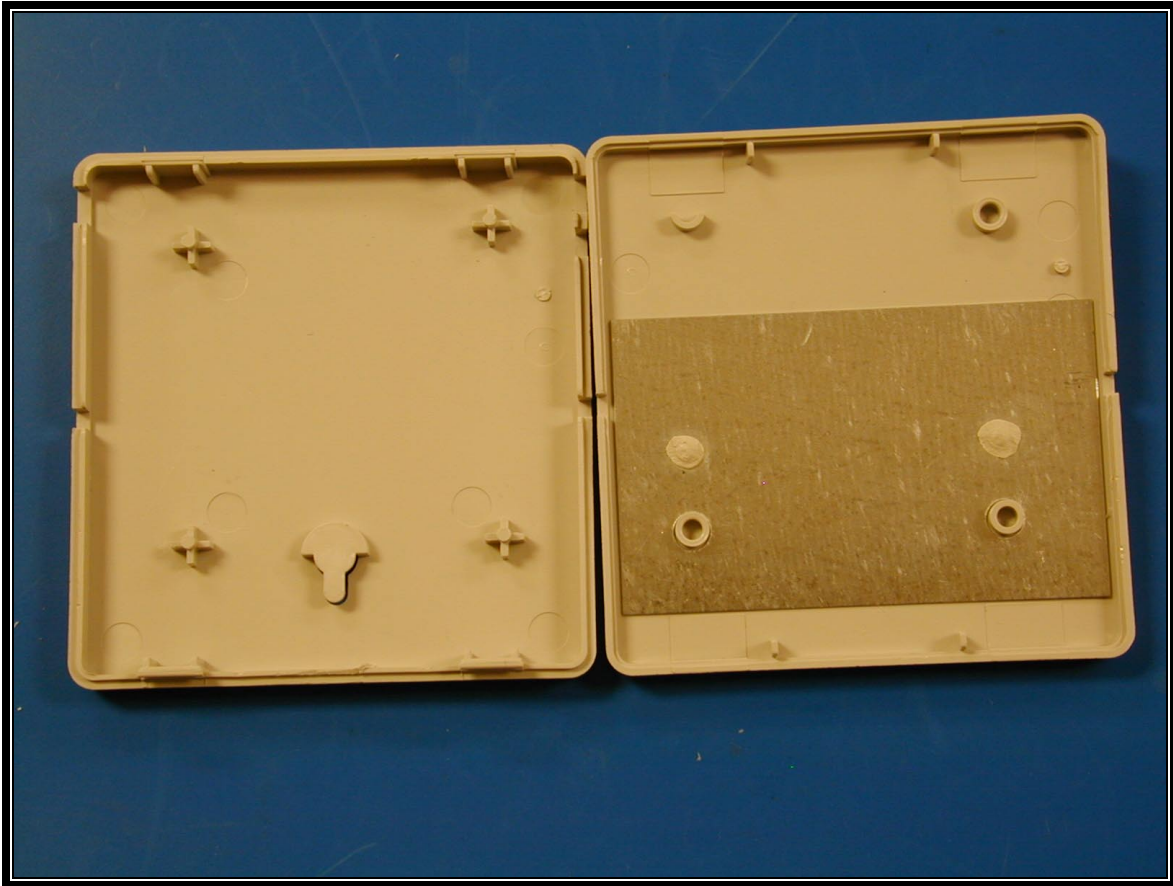
I



PHOTOGRAPH 15: BACK PCB OF ANTENNA

Rhein Tech Laboratories
360 Herndon Parkway
Suite 1400
Herndon, VA 20170
<http://www.rheintech.com>

Report number: 2002120
FCC: Part 15.247
Industry Canada: RSS-210
FCC ID: E2X-SWL2210P
M/N: SWL-2210P



PHOTOGRAPH 16: INSIDE FRONT AND BACK ANTENNA CASE