

**DECLARATION OF COMPLIANCE
SAR EVALUATION**

<u>Test Lab</u>	<u>Applicant Information</u>
CELLTECH RESEARCH INC. Testing and Engineering Lab 1955 Moss Court Kelowna, B.C. Canada V1Y 9L3 Phone: 250-448-7047 Fax: 250-448-7046 e-mail: info@celltechlabs.com web site: www.celltechlabs.com	SAMSUNG ELECTRO-MECHANICS R&D Center, 4th Floor 314, Maetan-3Dong, Paldal-Ku Suwon, Kyunggi-Do, Korea

FCC Rule Part(s):	47 CFR §2.1093
Test Procedure(s):	FCC OET Bulletin 65, Supplement C (01-01)
FCC Device Classification:	Part 15 Spread Spectrum Transmitter (DSS)
FCC ID:	E2XSWL-2200U
Model:	SWL-2200U
Device Type:	Wireless USB LAN Adapter for Laptop PC
Modulation:	Direct Sequence Spread Spectrum (DSSS)
Tx Frequency Range:	2412 - 2462 MHz
RF Output Power Tested:	7.4 dBm EIRP (2412 MHz)
	4.5 dBm EIRP (2437 MHz)
	6.6 dBm EIRP (2462 MHz)
Antenna Type:	Internal
Power Supply:	from Host Laptop PC
Host Laptop PC(s) Tested:	1. Gateway Solo 1400 (Vertical USB Slot)
	2. SONY VAIO PCG-R505 Super Slim Pro (Horizontal USB Slot)
Max. SAR Measured:	0.255 W/kg

Celltech Research Inc. declares under its sole responsibility that this device was found to be in compliance with the Specific Absorption Rate (SAR) RF exposure requirements specified in FCC 47 CFR §2.1093. The device was tested in accordance with the measurement standards and procedures specified in FCC OET Bulletin 65, Supplement C, Edition 01-01 (General Population / Uncontrolled Exposure).

I attest to the accuracy of data. All measurements were performed by me or were made under my supervision and are correct to the best of my knowledge and belief. I assume full responsibility for the completeness of these measurements and vouch for the qualifications of all persons taking them.

This test report shall not be reproduced partially, or in full, without the prior written approval of Celltech Research Inc. The results and statements contained in this report pertain only to the device(s) evaluated.



Russell Pipe
Senior Compliance Technologist
Celltech Research Inc.



TABLE OF CONTENTS		
1.0	INTRODUCTION.....	3
2.0	DESCRIPTION OF EUT.....	3
3.0	SAR MEASUREMENT SYSTEM	4
4.0	MEASUREMENT SUMMARY.....	5
5.0	DETAILS OF SAR EVALUATION.....	6
6.0	EVALUATION PROCEDURES.....	6-7
7.0	SYSTEM PERFORMANCE CHECK.....	8
8.0	EQUIVALENT TISSUES.....	9
9.0	SAR LIMITS.....	9
10.0	SYSTEM SPECIFICATIONS.....	10
11.0	PROBE SPECIFICATION.....	11
12.0	SAM PHANTOM.....	11
13.0	DEVICE HOLDER.....	11
14.0	TEST EQUIPMENT LIST.....	12
15.0	MEASUREMENT UNCERTAINTIES.....	13
16.0	REFERENCES.....	14
	APPENDIX A - SAR MEASUREMENT DATA.....	15
	APPENDIX B - SYSTEM CHECK DATA.....	16
	APPENDIX C - SYSTEM VALIDATION.....	17
	APPENDIX D - PROBE CALIBRATION.....	18
	APPENDIX E - MEASURED FLUID DIELECTRIC PARAMETERS.....	19
	APPENDIX F - SAM PHANTOM CERTIFICATE OF CONFORMITY.....	20
	APPENDIX G - SAR TEST SETUP & EUT PHOTOGRAPHS.....	21

1.0 INTRODUCTION

This measurement report demonstrates that the SAMSUNG ELECTRO-MECHANICS Model: SWL-2200U Wireless USB LAN Adapter for Laptop PC FCC ID: E2XSWL-2200U complies with the RF exposure requirements specified in FCC 47 CFR §2.1093 (see reference [1]) for the General Population environment. The test procedures described in FCC OET Bulletin 65, Supplement C, Edition 01-01 (see reference [2]) were employed. A description of the product, operating configuration, detailed summary of the test results, methodology and procedures used in the evaluation, equipment used, and the various provisions of the rules are included within this test report.

2.0 DESCRIPTION of Equipment Under Test (EUT)

FCC Rule Part(s)	47 CFR §2.1093
Test Procedure	FCC OET Bulletin 65, Supplement C (01-01)
FCC Device Classification	Part 15 Spread Spectrum Transmitter (DSS)
Device Type	Wireless USB LAN Adapter for Laptop PC
FCC ID	E2XSWL-2200U
Model	SWL-2200U
Serial No.	Pre-Production
Modulation	Direct Sequence Spread Spectrum (DSSS)
Tx Frequency Range	2412 - 2462 MHz
Max. RF Output Power Tested	7.4 dBm EIRP (2412 MHz) 4.5 dBm EIRP (2437 MHz) 6.6 dBm EIRP (2462 MHz)
Antenna Type	Internal
Power Supply	From Host Laptop PC
Host Laptop PC(s) Tested	1. Gateway Solo 1400 (Vertical USB Slot) (S/N: BT002062449) 2. SONY VAIO PCG-R505 Super Slim Pro (Horizontal USB Slot) (S/N: 28321630 3205677)

3.0 SAR MEASUREMENT SYSTEM

Celltech Research SAR measurement facility utilizes the Dosimetric Assessment System (DASY™) manufactured by Schmid & Partner Engineering AG (SPEAG™) of Zurich, Switzerland. The DASY system is comprised of the robot controller, computer, near-field probe, probe alignment sensor, specific anthropomorphic mannequin (SAM) phantom, and various planar phantoms for brain and/or body SAR evaluations. The robot is a six-axis industrial robot performing precise movements to position the probe to the location (points) of maximum electromagnetic field (EMF). A cell controller system contains the power supply, robot controller, teach pendant (Joystick), and remote control, is used to drive the robot motors. The Staubli robot is connected to the cell controller to allow software manipulation of the robot. A data acquisition electronic (DAE) circuit performs the signal amplification, signal multiplexing, AD-conversion, offset measurements, mechanical surface detection, collision detection, etc. is connected to the Electro-optical coupler (EOC). The EOC performs the conversion from the optical into digital electric signal of the DAE and transfers data to the PC plug-in card. The DAE3 utilizes a highly sensitive electrometer-grade preamplifier with auto-zeroing, a channel and gain-switching multiplexer, a fast 16-bit AD-converter and a command decoder and control logic unit. Transmission to the PC-card is accomplished through an optical downlink for data and status information and an optical uplink for commands and clock lines. The mechanical probe-mounting device includes two different sensor systems for frontal and sidewise probe contacts. They are also used for mechanical surface detection and probe collision detection. The robot uses its own controller with a built in VME-bus computer.



DASY3 SAR Measurement System with SAM phantom

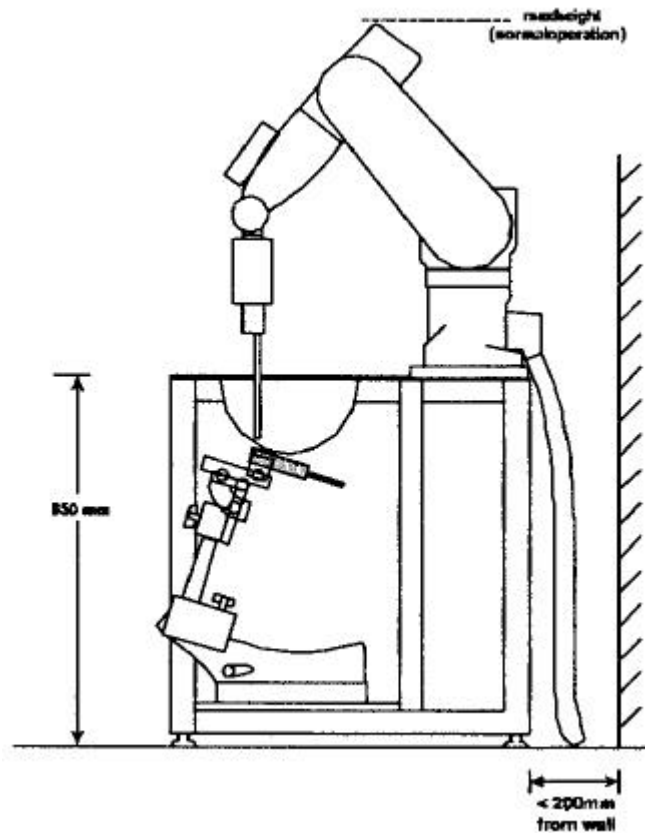


Figure 1. DASY3 Compact Version - Side View

4.0 MEASUREMENT SUMMARY

The measurement results were obtained with the EUT tested in the conditions described in this report. Detailed measurement data and plots showing the maximum SAR location of the EUT are reported in Appendix A.

BODY SAR MEASUREMENT RESULTS									
Freq. (MHz)	Channel	Mode	RF Output Power		Phantom Section	Host Laptop PC Position to Planar Phantom	Host Laptop PC & USB Slot Position	Separation Distance (cm)	Measured SAR 1g (W/kg)
			Before	Drift					
			dBm (EIRP)	dB					
2412	Low	DSSS	7.4	-0.12	Planar	Bottom Side	Gateway PC Vertical Slot	0.0	0.0245
2437	Mid	DSSS	4.5	-0.05	Planar	Bottom Side	Gateway PC Vertical Slot	0.0	0.0283
2462	High	DSSS	6.6	-0.10	Planar	Bottom Side	Gateway PC Vertical Slot	0.0	0.0222
2412	Low	DSSS	7.4	-0.19	Planar	Bottom Side	SONY PC Horizontal Slot	0.0	0.255
2437	Mid	DSSS	4.5	-0.02	Planar	Bottom Side	SONY PC Horizontal Slot	0.0	0.0305
2462	High	DSSS	6.6	-0.10	Planar	Bottom Side	SONY PC Horizontal Slot	0.0	0.200
2412	Low	DSSS	7.4	-0.11	Planar	Back Side	Gateway PC Vertical Slot	1.5	0.0060
2437	Mid	DSSS	4.5	-0.20	Planar	Back Side	Gateway PC Vertical Slot	1.5	0.0044
2462	High	DSSS	6.6	-0.15	Planar	Back Side	Gateway PC Vertical Slot	1.5	0.0026
2412	Low	DSSS	7.4	-0.09	Planar	Back Side	SONY PC Horizontal Slot	1.5	0.0055
2437	Mid	DSSS	4.5	-0.17	Planar	Back Side	SONY PC Horizontal Slot	1.5	0.0037
2462	High	DSSS	6.6	-0.15	Planar	Back Side	SONY PC Horizontal Slot	1.5	0.0171
ANSI / IEEE C95.1 1992 - SAFETY LIMIT BODY: 1.6 W/kg (averaged over 1 gram) Spatial Peak - Uncontrolled Exposure / General Population									
Test Date(s)		12/09/02			Relative Humidity		54 %		
Measured Mixture Type		2450MHz Muscle			Atmospheric Pressure		102.3 kPa		
Dielectric Constant ϵ_r		Target	Measured		Ambient Temperature		Fluid Parameter Check	SAR Evaluation	
		52.7 ±10%	48.3				23.3 °C	23.3 °C	
Conductivity σ (mho/m)		Target	Measured		Fluid Temperature		Fluid Parameter Check	SAR Evaluation	
		1.95 ±5%	2.01				23.2 °C	23.3 °C	
ρ (Kg/m ³)		1000			Fluid Depth		≥ 15 cm		

5.0 DETAILS OF SAR EVALUATION

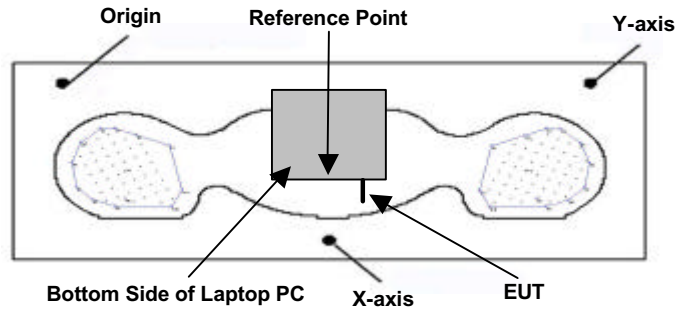
The SAMSUNG ELECTRO-MECHANICS Model: SWL-2200U Wireless USB LAN Adapter for Laptop PC FCC ID: E2XSWL-2200U was found to be compliant for localized Specific Absorption Rate based on the following test provisions and conditions described below. The detailed test setup photographs are shown in Appendix G.

1. The EUT was tested for body SAR with the bottom side of the Gateway Solo 1400 host Laptop PC facing parallel to, and touching, the outer surface of the planar phantom. The Gateway Solo 1400 host Laptop PC provided a vertically positioned USB slot and 0.7cm spacing between the EUT and the planar phantom.
2. The EUT was tested for body SAR with the bottom side of the SONY VAIO PCG-R505 Super Slim Pro host Laptop PC facing parallel to, and touching, the outer surface of the planar phantom. The SONY VAIO PCG-R505 Super Slim Pro host Laptop PC provided a horizontally positioned USB slot and 1.0cm spacing between the EUT and the planar phantom.
3. The EUT was tested for body SAR with the back side of the Gateway Solo 1400 host Laptop PC facing parallel to the outer surface of the planar phantom. A 1.5 cm separation distance was maintained between the top end of the EUT and the outer surface of the planar phantom.
4. The EUT was tested for body SAR with the back side of the SONY VAIO PCG-R505 Super Slim Pro host Laptop PC facing parallel to the outer surface of the planar phantom. A 1.5 cm separation distance was maintained between the top end of the EUT and the outer surface of the planar phantom.
5. The EUT was operated for an appropriate period prior to the evaluation to minimize power drift.
6. The conducted power level(s) could not be measured for the SAR evaluation. The EUT was evaluated for SAR at the maximum conducted power level set by the manufacturer. EIRP measurements were performed prior to the evaluation using the signal substitution method in accordance with §15.247 and ANSI TIA/EIA-603-A-2001.
7. The EUT was controlled via internal software and tested in modulated DSSS continuous transmit mode (100% duty cycle).
8. The location of the maximum spatial SAR distribution (Hot Spot) was determined relative to the device and its antenna(s).
9. The EUT was tested with a fully charged battery in the host Laptop PC.
10. Due to the dimensions of the host device, a stack of low-density, low-loss dielectric foamed polystyrene was used in place of the device holder.

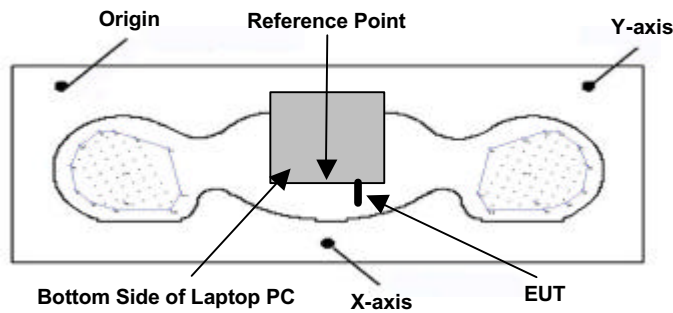
6.0 EVALUATION PROCEDURES

- a. (i) The evaluation was performed in the applicable area of the phantom depending on the type of device being tested. For devices held to the ear during normal operation, both the left and right ear positions were evaluated in accordance with FCC OET Bulletin 65, Supplement C (Edition 01-01) using the SAM phantom.
(ii) For body-worn and face-held devices a planar phantom was used.
- b. The SAR was determined by a pre-defined procedure within the DASY3 software. Upon completion of a reference and optical surface check, the exposed region of the phantom was scanned near the inner surface with a grid spacing of 20mm x 20mm.
- c. Based on the area scan data, the area of maximum absorption was determined by spline interpolation. Around this point, a volume of 40 x 40 x 35 mm (fine resolution volume scan, zoom scan) was assessed by measuring 5 x 5 x 7 points.
- d. The 1g and 10g spatial peak SAR was determined as follows:
 1. The first step was an extrapolation to find the points between the dipole center of the probe and the surface of the phantom. This data cannot be measured, since the center of the dipoles is 2.7 mm away from the tip of the probe and the distance between the surface and the lowest measuring point is 1.3 mm (see probe calibration document in Appendix D). The extrapolation was based on a least square algorithm [W. Gander, Computermathematik, p.168-180] (see reference [4]). Through the points in the first 3 cm in all z-axis, polynomials of the fourth order were calculated. This polynomial was then used to evaluate the points between the surface and the probe tip.
 2. The next step used 3D-spline interpolation to get all points within the measured volume in a 1mm grid (35000 points). The 3D-spline is composed of three one-dimensional splines with the "Not a knot" condition [W. Gander, Computermathematik, p.141-150] (x, y and z -direction) [Numerical Recipes in C, Second Edition, p.123ff] (see reference [4]).
 3. The maximal interpolated value was searched with a straightforward algorithm. Around this maximum the SAR values averaged over the spatial volumes (1g or 10g) were computed using the 3D-spline interpolation algorithm. 8000 points (20x20x20) were interpolated to calculate the average.

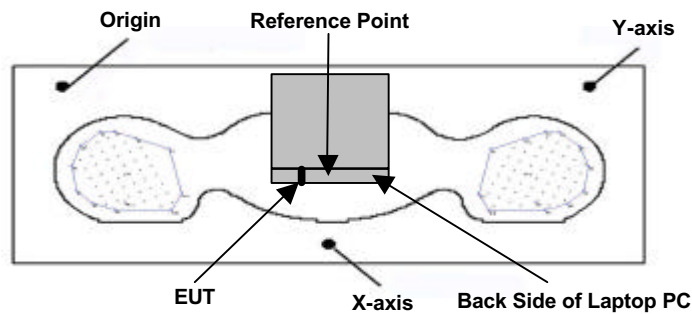
EVALUATION PROCEDURES (Cont.)



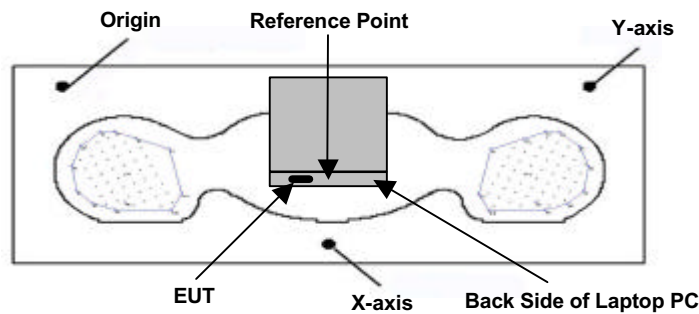
**Figure 2. Phantom Reference Point & EUT Positioning
Bottom Side of Laptop PC - Vertical USB Slot**



**Figure 3. Phantom Reference Point & EUT Positioning
Bottom Side of Laptop PC - Horizontal USB Slot**



**Figure 4. Phantom Reference Point & EUT Positioning
Back Side of Laptop PC - Vertical USB Slot**



**Figure 5. Phantom Reference Point & EUT Positioning
Back Side of Laptop PC - Horizontal USB Slot**

7.0 SYSTEM PERFORMANCE CHECK

Prior to the assessment a system performance check was performed in the planar section of the SAM phantom with a 2450MHz dipole (see Appendix C for detailed system validation procedures). The fluids were verified using an 85070C Dielectric Probe Kit and an 8753E Network Analyzer (see Appendix E for printout of measured fluid dielectric parameters). A forward power of 250 mW was applied to the dipole and the system was verified to a tolerance of $\pm 10\%$ (see Appendix B for system check test plot).

SYSTEM PERFORMANCE CHECK											
Test Date	Equiv. Tissue	SAR 1g (W/kg)		Dielectric Constant ϵ_r		Conductivity σ (mho/m)		ρ (Kg/m ³)	Ambient Temp.	Fluid Temp.	Fluid Depth
		Target	Measured	Target	Measured	Target	Measured				
12/09/02	2450MHz (Brain)	13.1 $\pm 10\%$	14.0	39.2 $\pm 10\%$	36.9	1.80 $\pm 5\%$	1.81	1000	23.3 °C*	24.0 °C*	≥ 15 cm
									23.3 °C**	24.0 °C**	

* Fluid Parameter Check
 ** System Performance Check

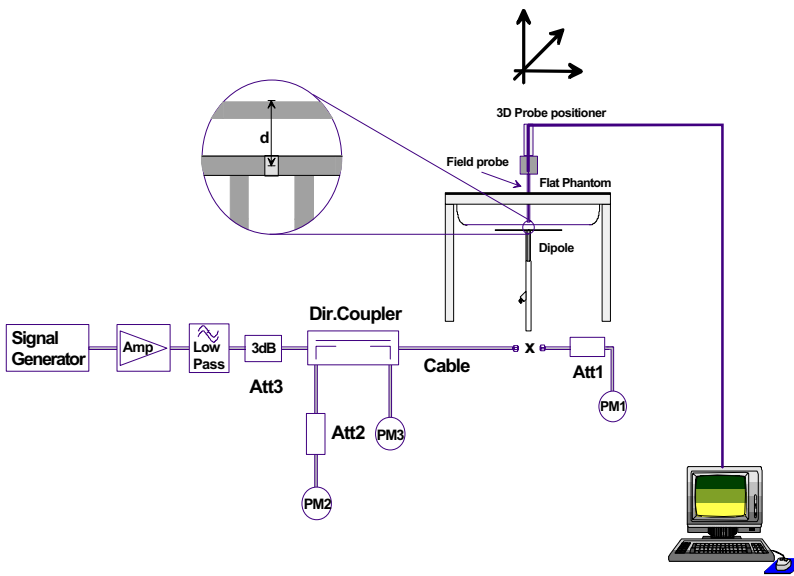


Figure 6. 2450MHz System Check Setup Diagram



2450MHz System Check Setup Photograph

8.0 EQUIVALENT TISSUES

The 2450MHz brain and body mixtures consist of Glycol-monobutyl, water, and salt (body mixture only). The fluid was prepared according to standardized procedures and measured for dielectric parameters (permittivity and conductivity).

TISSUE MIXTURES		
INGREDIENT	2450MHz Brain (System Performance Check)	2450MHz Body (EUT Evaluation)
Water	55.20 %	69.95 %
Glycol Monobutyl	44.80 %	30.00 %
Salt	-	0.05 %

9.0 SAR SAFETY LIMITS

EXPOSURE LIMITS	SAR (W/Kg)	
	(General Population / Uncontrolled Exposure Environment)	(Occupational / Controlled Exposure Environment)
Spatial Average (averaged over the whole body)	0.08	0.4
Spatial Peak (averaged over any 1 g of tissue)	1.60	8.0
Spatial Peak (hands/wrists/feet/ankles averaged over 10 g)	4.0	20.0

Notes:

1. Uncontrolled environments are defined as locations where there is potential exposure of individuals who have no knowledge or control of their potential exposure.
2. Controlled environments are defined as locations where there is potential exposure of individuals who have knowledge of their potential exposure and can exercise control over their exposure.

10.0 ROBOT SYSTEM SPECIFICATIONS

Specifications

POSITIONER: Stäubli Unimation Corp. Robot Model: RX60L
Repeatability: 0.02 mm
No. of axis: 6

Data Acquisition Electronic (DAE) System

Cell Controller

Processor: Pentium III
Clock Speed: 450 MHz
Operating System: Windows NT
Data Card: DASY3 PC-Board

Data Converter

Features: Signal Amplifier, multiplexer, A/D converter, and control logic
Software: DASY3 software
Connecting Lines: Optical downlink for data and status info.
Optical uplink for commands and clock

PC Interface Card

Function: 24 bit (64 MHz) DSP for real time processing
Link to DAE3
16-bit A/D converter for surface detection system
serial link to robot
direct emergency stop output for robot

E-Field Probe

Model: ET3DV6
Serial No.: 1387
Construction: Triangular core fiber optic detection system
Frequency: 10 MHz to 6 GHz
Linearity: ± 0.2 dB (30 MHz to 3 GHz)

Phantom

Type: SAM V4.0C
Shell Material: Fiberglass
Thickness: 2.0 ± 0.1 mm
Volume: Approx. 20 liters

11.0 PROBE SPECIFICATION (ET3DV6)

Construction:	Symmetrical design with triangular core Built-in shielding against static charges PEEK enclosure material (resistant to organic solvents, e.g. glycol)
Calibration:	In air from 10 MHz to 2.5 GHz In brain simulating tissue at frequencies of 900 MHz and 1.8 GHz (accuracy $\pm 8\%$)
Frequency:	10 MHz to >6 GHz; Linearity: ± 0.2 dB (30 MHz to 3 GHz)
Directivity:	± 0.2 dB in brain tissue (rotation around probe axis) ± 0.4 dB in brain tissue (rotation normal to probe axis)
Dynam. Rnge:	5 μ W/g to >100 mW/g; Linearity: ± 0.2 dB
Srfce. Detect.	± 0.2 mm repeatability in air and clear liquids over diffuse reflecting surfaces
Dimensions:	Overall length: 330 mm Tip length: 16 mm Body diameter: 12 mm Tip diameter: 6.8 mm Distance from probe tip to dipole centers: 2.7 mm
Application:	General dosimetry up to 3 GHz Compliance tests of mobile phone



ET3DV6 E-Field Probe

12.0 SAM PHANTOM V4.0C

The SAM phantom V4.0C is a fiberglass shell phantom with a 2.0 mm shell thickness for left and right head and flat planar area integrated in a wooden table. The shape of the fiberglass shell corresponds to the phantom defined by SCC34-SC2. The device holder positions are adjusted to the standard measurement positions in the three sections.



SAM Phantom

13.0 DEVICE HOLDER

The DAS3 device holder has two scales for device rotation (with respect to the body axis) and the device inclination (with respect to the line between the ear openings). The plane between the ear openings and the mouth tip has a rotation angle of 65° . The bottom plate contains three pair of bolts for locking the device holder. The device holder positions are adjusted to the standard measurement positions in the three sections.



Device Holder

14.0 TEST EQUIPMENT LIST

SAR MEASUREMENT SYSTEM		
EQUIPMENT	SERIAL NO.	CALIBRATION DATE
DASY3 System		
-Robot	599396-01	N/A
-ET3DV6 E-Field Probe	1387	Feb 2002
-300MHz Validation Dipole	135	Oct 2002
-450MHz Validation Dipole	136	Oct 2002
-900MHz Validation Dipole	054	June 2001
-1800MHz Validation Dipole	247	June 2001
-2450MHz Validation Dipole	150	Oct 2002
-SAM Phantom V4.0C	N/A	N/A
-Small Planar Phantom	N/A	N/A
-Medium Planar Phantom	N/A	N/A
-Large Planar Phantom	N/A	N/A
85070C Dielectric Probe Kit	N/A	N/A
Gigatronics 8652A Power Meter	1835272	Feb 2002
-Power Sensor 80701A	1833535	Feb 2002
-Power Sensor 80701A	1833542	Mar 2002
Pasternack Attenuator (30dB, 2W)	PE7014-30	N/A
E4408B Spectrum Analyzer	US39240170	Nov 2002
8594E Spectrum Analyzer	3543A02721	Feb 2002
8753E Network Analyzer	US38433013	Feb 2002
8648D Signal Generator	3847A00611	Feb 2002
5S1G4 Amplifier Research Power Amplifier	26235	N/A

15.0 MEASUREMENT UNCERTAINTIES

Error Description	Uncertainty Value ±%	Probability Distribution	Divisor	C_i 1g	Standard Uncertainty ±% (1g)	v_i or v_{eff}
Measurement System						
Probe calibration	± 4.8	Normal	1	1	± 4.8	∞
Axial isotropy of the probe	± 4.7	Rectangular	√3	(1- c_p)	± 1.9	∞
Spherical isotropy of the probe	± 9.6	Rectangular	√3	(c_p)	± 3.9	∞
Spatial resolution	± 0.0	Rectangular	√3	1	± 0.0	∞
Boundary effects	± 5.5	Rectangular	√3	1	± 3.2	∞
Probe linearity	± 4.7	Rectangular	√3	1	± 2.7	∞
Detection limit	± 1.0	Rectangular	√3	1	± 0.6	∞
Readout electronics	± 1.0	Normal	1	1	± 1.0	∞
Response time	± 0.8	Rectangular	√3	1	± 0.5	∞
Integration time	± 1.4	Rectangular	√3	1	± 0.8	∞
RF ambient conditions	± 3.0	Rectangular	√3	1	± 1.7	∞
Mech. constraints of robot	± 0.4	Rectangular	√3	1	± 0.2	∞
Probe positioning	± 2.9	Rectangular	√3	1	± 1.7	∞
Extrapolation & integration	± 3.9	Rectangular	√3	1	± 2.3	∞
Test Sample Related						
Device positioning	± 6.0	Normal	√3	1	± 6.7	12
Device holder uncertainty	± 5.0	Normal	√3	1	± 5.9	8
Power drift	± 5.0	Rectangular	√3		± 2.9	∞
Phantom and Setup						
Phantom uncertainty	± 4.0	Rectangular	√3	1	± 2.3	∞
Liquid conductivity (target)	± 5.0	Rectangular	√3	0.6	± 1.7	∞
Liquid conductivity (measured)	± 5.0	Rectangular	√3	0.6	± 1.7	∞
Liquid permittivity (target)	± 10.0	Rectangular	√3	0.6	± 3.5	∞
Liquid permittivity (measured)	± 10.0	Rectangular	√3	0.6	± 3.5	∞
Combined Standard Uncertainty					± 13.7	
Expanded Uncertainty (k=2)					± 27.5	

Measurement Uncertainty Table in accordance with IEEE Std 1528 (Draft - see Reference [3])

16.0 REFERENCES

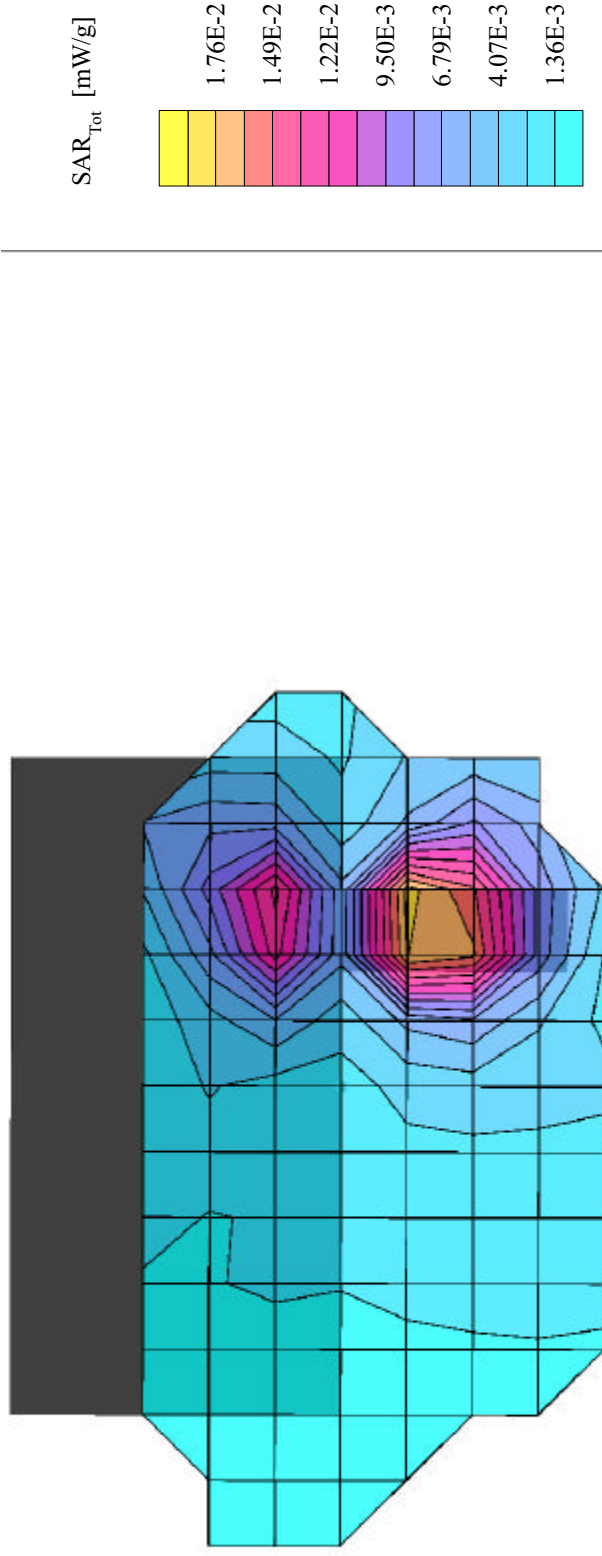
- [1] Federal Communications Commission, "Radiofrequency radiation exposure evaluation: portable devices", Rule Part 47 CFR §2.1093: 1999.
- [2] Federal Communications Commission, "Evaluating Compliance with FCC Guidelines for Human Exposure to Radio frequency Electromagnetic Fields", OET Bulletin 65, Supplement C (Edition 01-01), FCC, Washington, D.C.: June 2001.
- [3] IEEE Standards Coordinating Committee 34, Std 1528-200X, "DRAFT Recommended Practice for Determining the Spatial-Peak Specific Absorption Rate (SAR) in the Human Body Due to Wireless Communications Devices: Experimental Techniques".
- [4] W. Gander, *Computermathematick*, Birkhaeuser, Basel: 1992.

APPENDIX A - SAR MEASUREMENT DATA

Samsung Electro-Mechanics FCC ID: E2XSWL-2200U

SAM Phantom; Flat Section; Position: (90°, 180°)
Probe: ET3DV6 - SN1387; ConvF(4.30,4.30,4.30); Crest factor: 1.0
2450 MHz Muscle: $\sigma = 2.01 \text{ mho/m}$, $\epsilon_r = 48.3$, $\rho = 1.00 \text{ g/cm}^3$
Coarse: Dx = 20.0, Dy = 20.0, Dz = 10.0
Cube 5x5x7; Powerdrift: -0.12 dB
SAR (1g): 0.0245 mW/g, SAR (10g): 0.0125 mW/g

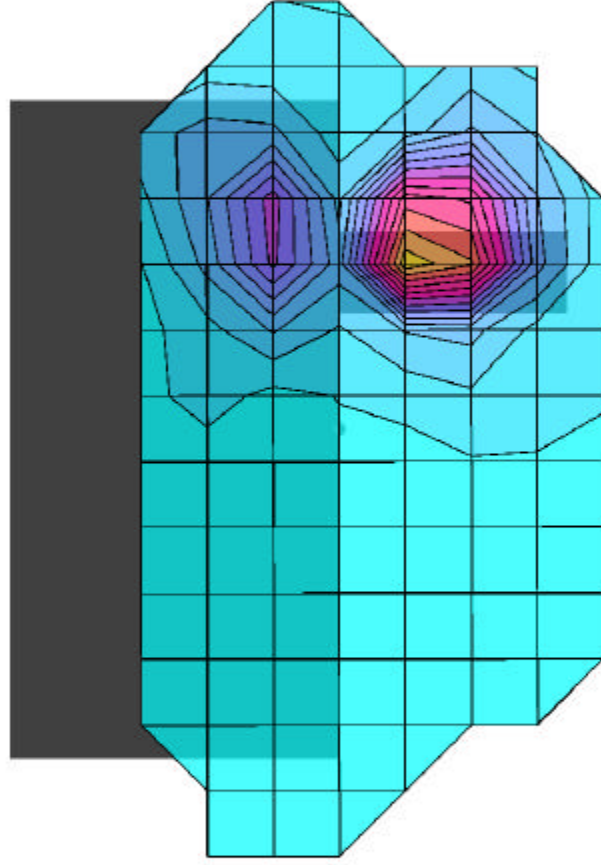
Body SAR - Bottom Side of Laptop PC - 0.0cm Separation Distance
Samsung SWL-2200U Wireless USB LAN Adapter
with Gateway Solo 1400 Laptop PC (Vertical USB Slot)
DSSS Mode (Constant Transmit)
Low Channel [2412.00 MHz]
Power Level: 7.4 dBm (EIRP)
Ambient Temp. 23.3°C; Fluid Temp. 23.3°C
Date Tested: December 09, 2002



Samsung Electro-Mechanics FCC ID: E2XSWL-2200U

SAM Phantom; Flat Section; Position: (90°, 180°)
Probe: ET3DV6 - SN1387; ConvF(4.30,4.30,4.30); Crest factor: 1.0
2450 MHz Muscle: $\sigma = 2.01 \text{ mho/m}$, $\epsilon_r = 48.3$, $\rho = 1.00 \text{ g/cm}^3$
Coarse: Dx = 20.0, Dy = 20.0, Dz = 10.0
Cube 5x5x7; Powerdrift: -0.05 dB
SAR (1g): 0.0283 mW/g, SAR (10g): 0.0139 mW/g

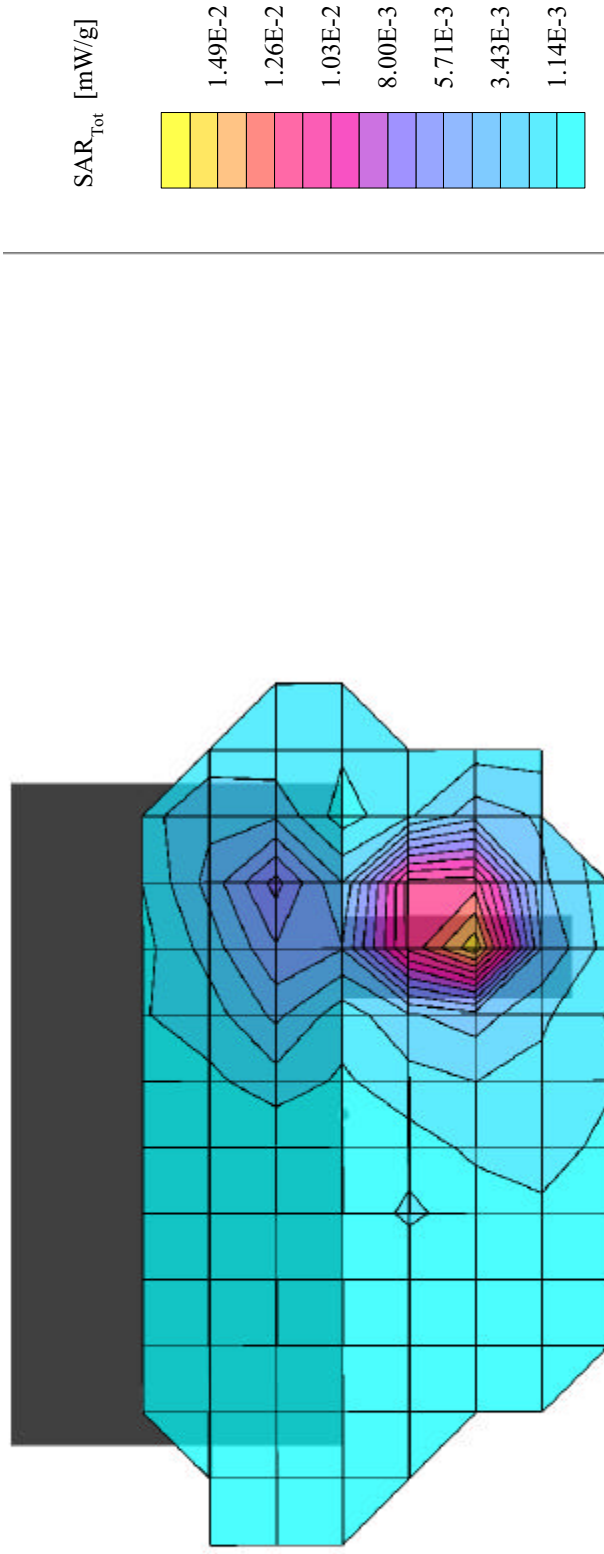
Body SAR - Bottom Side of Laptop PC - 0.0cm Separation Distance
Samsung_SWL-2200U Wireless USB LAN Adapter
with Gateway Solo 1400 Laptop PC (Vertical USB Slot)
DSSS Mode (Constant Transmit)
Mid Channel [2437.00 MHz]
Power Level: 4.5 dBm (EIRP)
Ambient Temp. 23.3°C; Fluid Temp. 23.3°C
Date Tested: December 09, 2002



Samsung Electro-Mechanics FCC ID: E2XSWL-2200U

SAM Phantom; Flat Section; Position: (90°, 180°)
Probe: ET3DV6 - SN1387; ConvF(4.30,4.30,4.30); Crest factor: 1.0
2450 MHz Muscle: $\sigma = 2.01 \text{ mho/m}$, $\epsilon_r = 48.3$, $\rho = 1.00 \text{ g/cm}^3$
Coarse: Dx = 20.0, Dy = 20.0, Dz = 10.0
Cube 5x5x7; Powerdrift: -0.10 dB
SAR (1g): 0.0222 mW/g, SAR (10g): 0.0109 mW/g

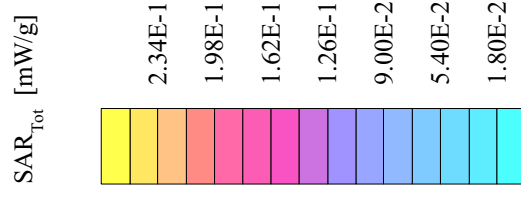
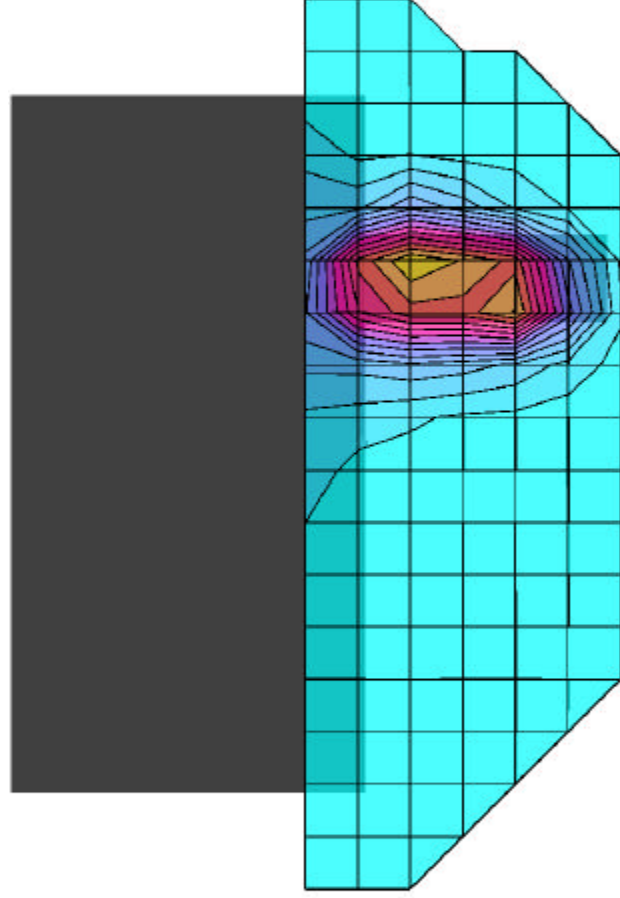
Body SAR - Bottom Side of Laptop PC - 0.0cm Separation Distance
Samsung_SWL-2200U Wireless USB LAN Adapter
with Gateway Solo 1400 Laptop PC (Vertical USB Slot)
DSSS Mode (Constant Transmit)
High Channel [2462.00 MHz]
Power Level: 6.6 dBm (EIRP)
Ambient Temp. 23.3°C; Fluid Temp. 23.3°C
Date Tested: December 09, 2002



Samsung Electro-Mechanics FCC ID: E2XSWL-2200U

SAM Phantom; Flat Section; Position: (90°, 180°)
Probe: ET3DV6 - SN1387; ConvF(4.30,4.30,4.30); Crest factor: 1.0
2450 MHz Muscle: $\sigma = 2.01 \text{ mho/m}$, $\epsilon_r = 48.3$, $\rho = 1.00 \text{ g/cm}^3$
Coarse: Dx = 15.0, Dy = 15.0, Dz = 10.0
Cube 5x5x7; Powerdrift: -0.19 dB
SAR (1g): 0.255 mW/g, SAR (10g): 0.136 mW/g

Body SAR - Bottom Side of Laptop PC - 0.0cm Separation Distance
Samsung SWL-2200U Wireless USB LAN Adapter
with SONY VAIO PCG-R505 Laptop PC (Horizontal USB Slot)
DSSS Mode (Constant Transmit)
Low Channel [2412.00 MHz]
Power Level: 7.4 dBm (EIRP)
Ambient Temp. 23.3°C; Fluid Temp. 23.3°C
Date Tested: December 09, 2002



Samsung Electro-Mechanics FCC ID: E2XSWL-2200U

SAM Phantom; Flat Section

Probe: ET3DV6 - SN1387; ConvF(4.30,4.30,4.30); Crest factor: 1.0
2450 MHz Muscle: $\sigma = 2.01 \text{ mho/m}$ $\epsilon_r = 48.3$ $\rho = 1.00 \text{ g/cm}^3$

Z-Axis Extrapolation at Peak SAR Location

Body SAR - Bottom Side of Laptop PC - 0.0cm Separation Distance
Samsung SWL-2200U Wireless USB LAN Adapter
with SONY VAIO PCG-R505 Laptop PC (Horizontal USB Slot)

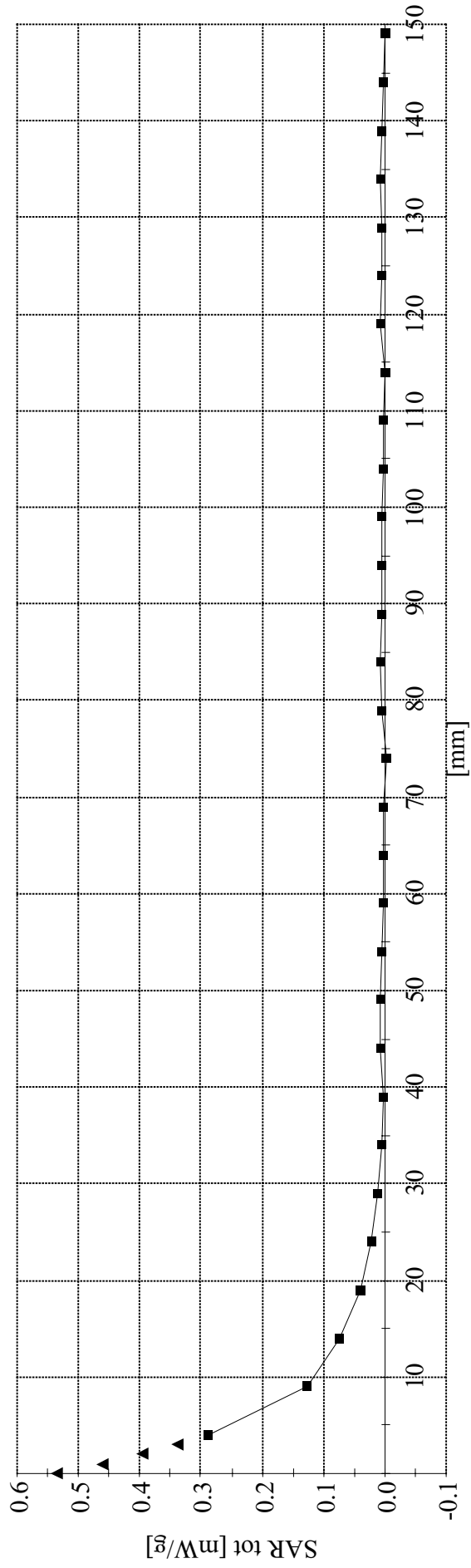
DSSS Mode (Constant Transmit)

Low Channel [2412.00 MHz]

Power Level: 7.4 dBm (EIRP)

Ambient Temp. 23.3°C; Fluid Temp. 23.3°C

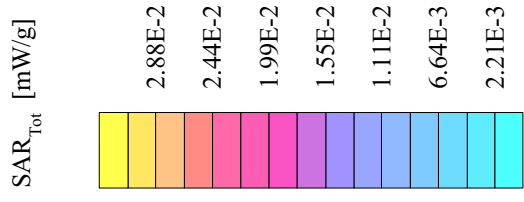
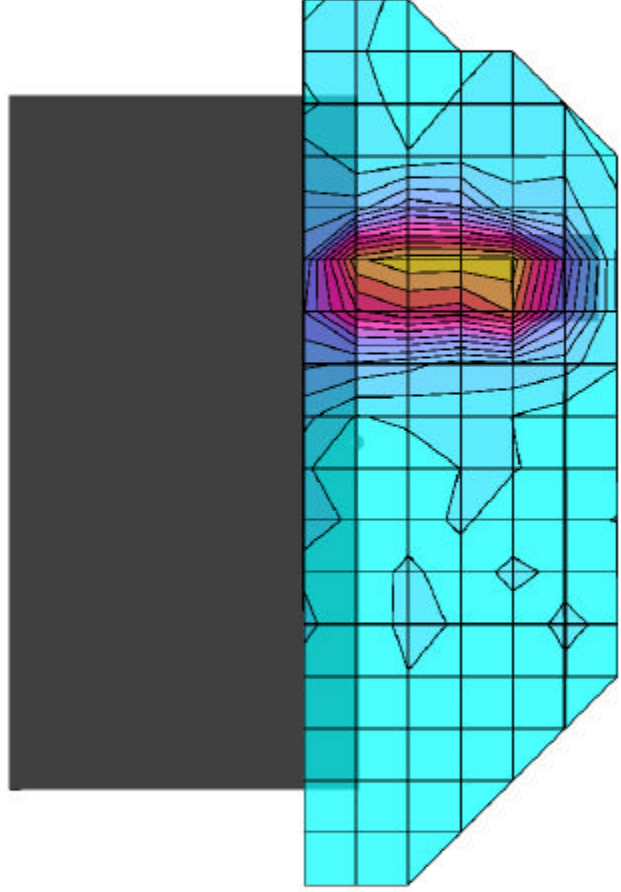
Date Tested: December 09, 2002



Samsung Electro-Mechanics FCC ID: E2XSWL-2200U

SAM Phantom; Flat Section; Position: (90°, 180°)
 Probe: ET3DV6 - SN1387; ConvF(4.30,4.30,4.30); Crest factor: 1.0
 2450 MHz Muscle: $\sigma = 2.01$ mho/m $\epsilon_r = 48.3$ $\rho = 1.00$ g/cm³
 Coarse: Dx = 15.0, Dy = 15.0, Dz = 10.0
 Cube 5x5x7; Powerdrift: -0.02 dB
 SAR (1g): 0.0305 mW/g, SAR (10g): 0.0168 mW/g

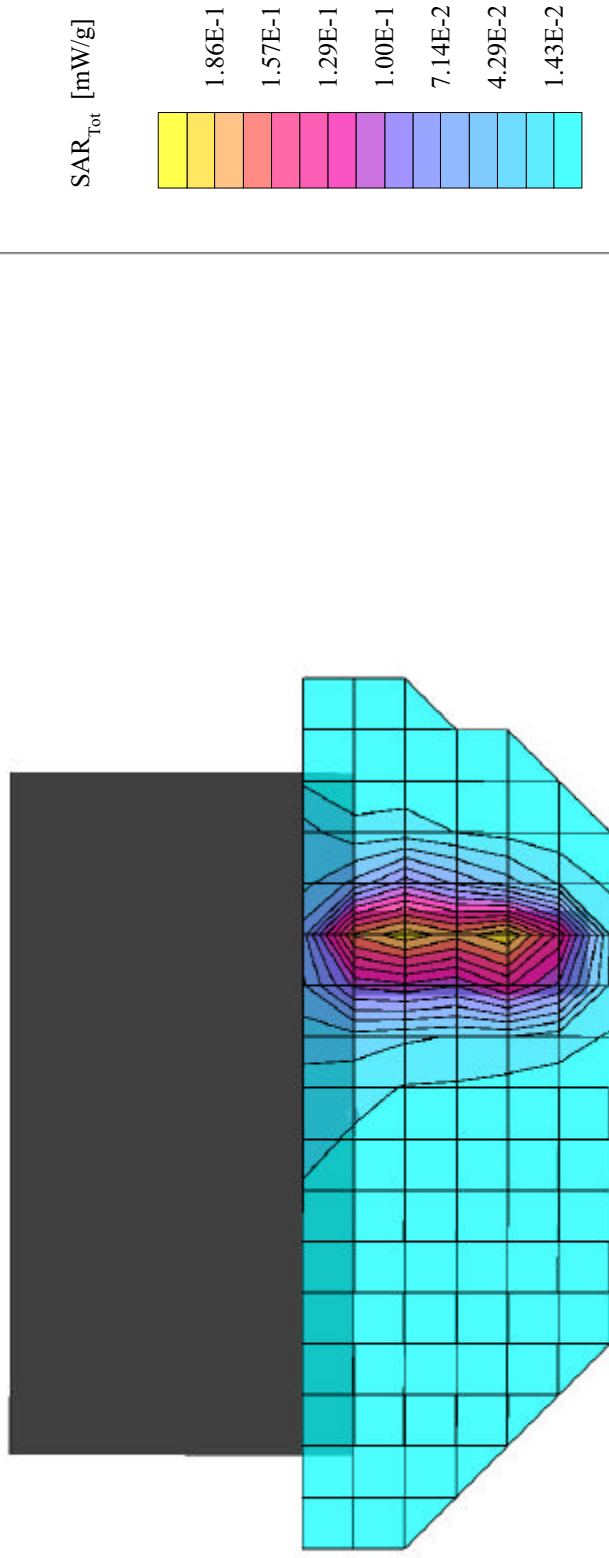
Body SAR - Bottom Side of Laptop PC - 0.0cm Separation Distance
 Samsung SWL-2200U Wireless USB LAN Adapter
 with SONY VAIO PCG-R505 Laptop PC (Horizontal USB Slot)
 DSSS Mode (Constant Transmit)
 Mid Channel [2437.00 MHz]
 Power Level: 4.5 dBm (EIRP)
 Ambient Temp. 23.3°C; Fluid Temp. 23.3°C
 Date Tested: December 09, 2002



Samsung Electro-Mechanics FCC ID: E2XSWL-2200U

SAM Phantom; Flat Section; Position: (90°, 180°)
Probe: ET3DV6 - SN1387; ConvF(4.30,4.30,4.30); Crest factor: 1.0
2450 MHz Muscle: $\sigma = 2.01 \text{ mho/m}$, $\epsilon_r = 48.3$, $\rho = 1.00 \text{ g/cm}^3$
Coarse: Dx = 15.0, Dy = 15.0, Dz = 10.0
Cube 5x5x7; Powerdrift: -0.10 dB
SAR (1g): 0.200 mW/g, SAR (10g): 0.0989 mW/g

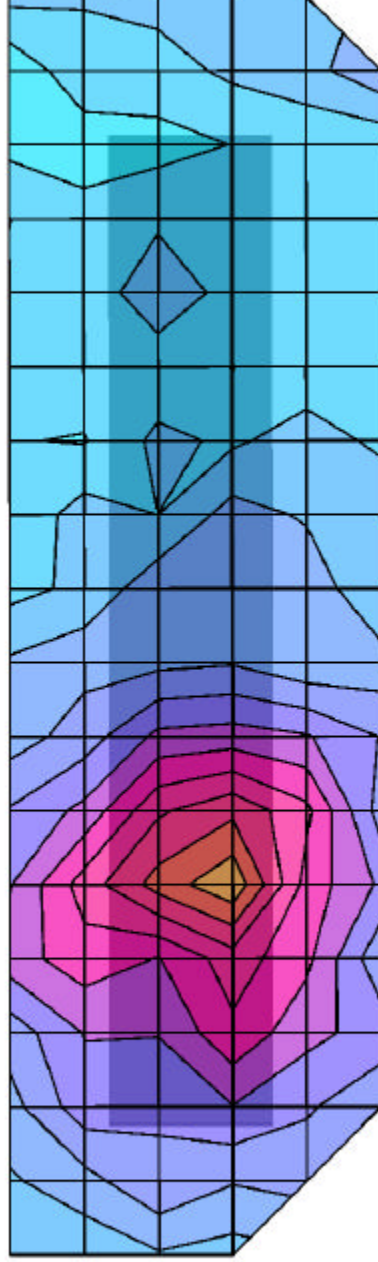
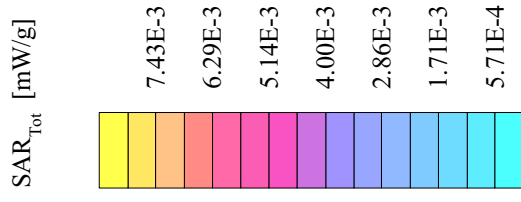
Body SAR - Bottom Side of Laptop PC - 0.0cm Separation Distance
Samsung SWL-2200U Wireless USB LAN Adapter
with SONY VAIO PCG-R505 Laptop PC (Horizontal USB Slot)
DSSS Mode (Constant Transmit)
High Channel [2462.00 MHz]
Power Level: 6.6 dBm (EIRP)
Ambient Temp. 23.3°C; Fluid Temp. 23.3°C
Date Tested: December 09, 2002



Samsung Electro-Mechanics FCC ID: E2XSWL-2200U

SAM Phantom; Flat Section; Position: (180°,180°)
Probe: ET3DV6 - SN1387; ConvF(4.30,4.30,4.30); Crest factor: 1.0
2450 MHz Muscle: $\sigma = 2.01$ mho/m $\epsilon_r = 48.3$ $\rho = 1.00$ g/cm³
Coarse: Dx = 15.0, Dy = 15.0, Dz = 10.0
Cube 5x5x7; Powerdrift: -0.11 dB
SAR (1g): 0.0060 mW/g, SAR (10g): 0.0037 mW/g

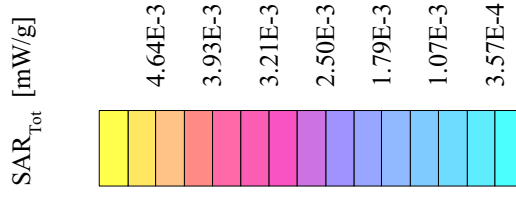
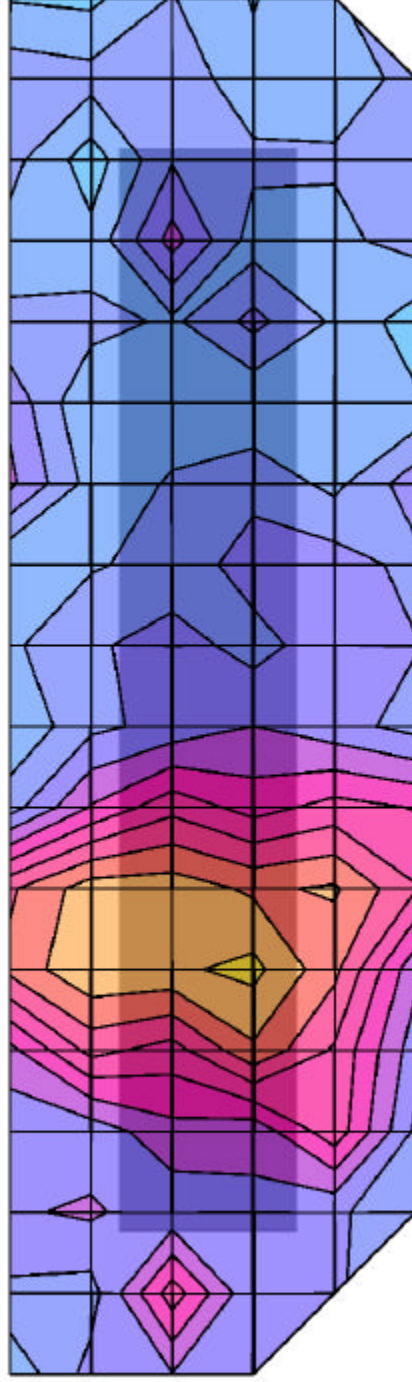
Body SAR - Back Side of Laptop PC - 1.5cm Separation Distance
Samsung SWL-2200U Wireless USB LAN Adapter
with Gateway Solo 1400 Laptop PC (Vertical USB Slot)
DSSS Mode (Constant Transmit)
Low Channel [2412.00 MHz]
Power Level: 7.4 dBm (EIRP)
Ambient Temp. 23.3°C; Fluid Temp. 23.3°C
Date Tested: December 09, 2002



Samsung Electro-Mechanics FCC ID: E2XSWL-2200U

SAM Phantom; Flat Section; Position: (180°,180°)
Probe: ET3DV6 - SN1387; ConvF(4.30,4.30,4.30); Crest factor: 1.0
2450 MHz Muscle: $\sigma = 2.01 \text{ mho/m}$ $\epsilon_r = 48.3$ $\rho = 1.00 \text{ g/cm}^3$
Coarse: Dx = 15.0, Dy = 15.0, Dz = 10.0
Cube 5x5x7; Powerdrift: -0.20 dB
SAR (1g): 0.0044 mW/g, SAR (10g): 0.0028 mW/g

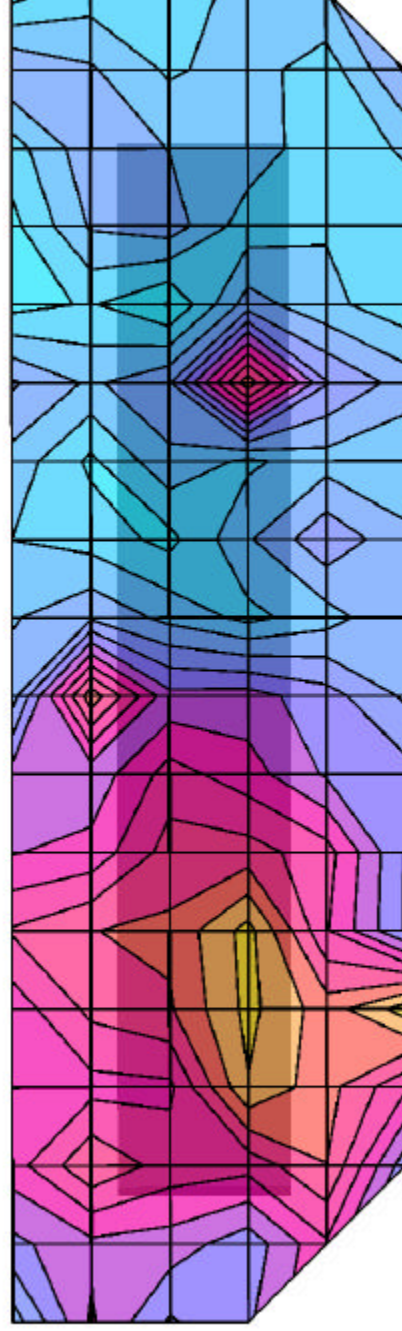
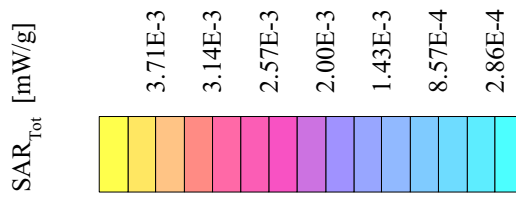
Body SAR - Back Side of Laptop PC - 1.5cm Separation Distance
Samsung SWL-2200U Wireless USB LAN Adapter
with Gateway Solo 1400 Laptop PC (Vertical USB Slot)
DSSS Mode (Constant Transmit)
Mid Channel [2437.00 MHz]
Power Level: 4.5 dBm (EIRP)
Ambient Temp. 23.3°C; Fluid Temp. 23.3°C
Date Tested: December 09, 2002



Samsung Electro-Mechanics FCC ID: E2XSWL-2200U

SAM Phantom; Flat Section; Position: (180°,180°)
 Probe: ET3DV6 - SN1387; ConvF(4.30,4.30,4.30); Crest factor: 1.0
 2450 MHz Muscle: $\sigma = 2.01 \text{ mho/m}$ $\epsilon_r = 48.3$ $\rho = 1.00 \text{ g/cm}^3$
 Coarse: Dx = 15.0, Dy = 15.0, Dz = 10.0
 Cube 5x5x7; Powerdrift: -0.15 dB
 SAR (1g): 0.0026 mW/g, SAR (10g): 0.0016 mW/g

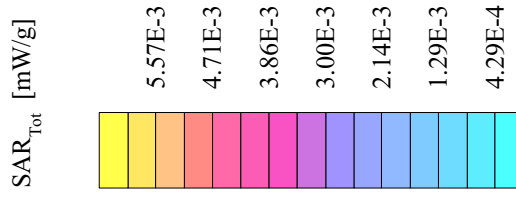
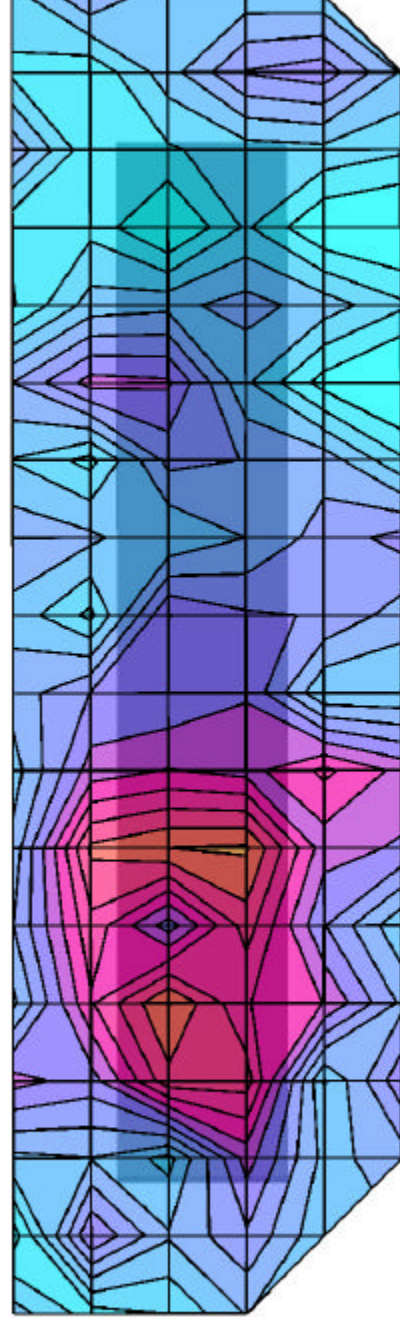
Body SAR - Back Side of Laptop PC - 1.5cm Separation Distance
 Samsung SWL-2200U Wireless USB LAN Adapter
 with Gateway Solo 1400 Laptop PC (Vertical USB Slot)
 DSSS Mode (Constant Transmit)
 High Channel [2462.00 MHz]
 Power Level: 6.6 dBm (EIRP)
 Ambient Temp. 23.3°C; Fluid Temp. 23.3°C
 Date Tested: December 09, 2002



Samsung Electro-Mechanics FCC ID: E2XSWL-2200U

SAM Phantom; Flat Section; Position: (180°,180°)
Probe: ET3DV6 - SN1387; ConvF(4.30,4.30,4.30); Crest factor: 1.0
2450 MHz Muscle: $\sigma = 2.01 \text{ mho/m}$ $\epsilon_r = 48.3$ $\rho = 1.00 \text{ g/cm}^3$
Coarse: Dx = 15.0, Dy = 15.0, Dz = 10.0
Cube 5x5x7; Powerdrift: -0.09 dB
SAR (1g): 0.0055 mW/g, SAR (10g): 0.0032 mW/g

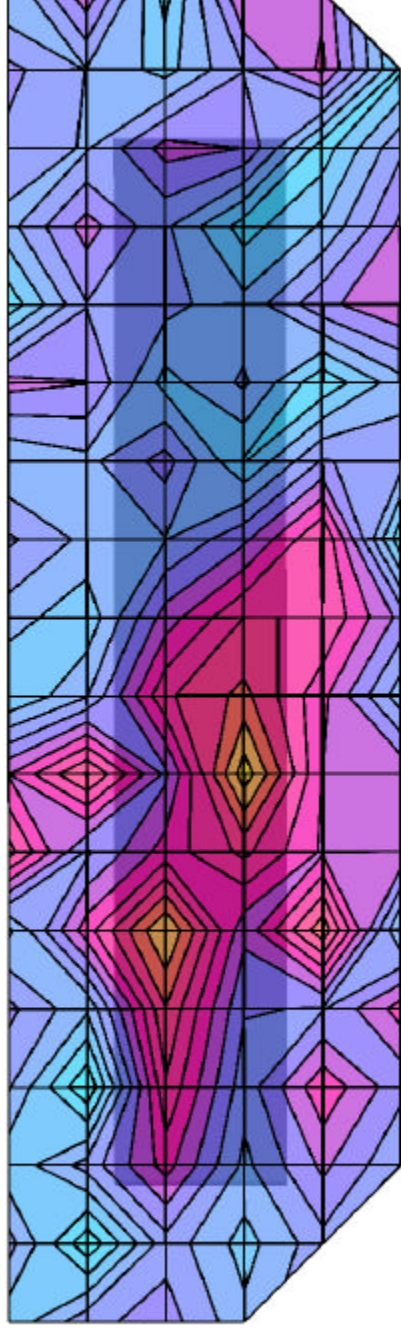
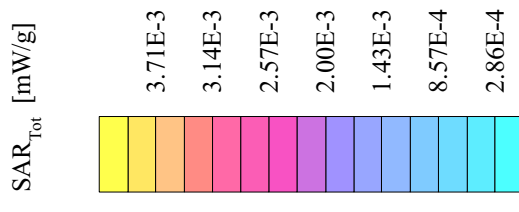
Body SAR - Back Side of Laptop PC - 1.5cm Separation Distance
Samsung SWL-2200U Wireless USB LAN Adapter
with SONY VAIO PCG-R505 Laptop PC (Horizontal USB Slot)
DSSS Mode (Constant Transmit)
Low Channel [2412.00 MHz]
Power Level: 7.4 dBm (EIRP)
Ambient Temp. 23.3°C; Fluid Temp. 23.3°C
Date Tested: December 09, 2002



Samsung Electro-Mechanics FCC ID: E2XSWL-2200U

SAM Phantom; Flat Section; Position: (180°,180°)
 Probe: ET3DV6 - SN1387; ConvF(4.30,4.30,4.30); Crest factor: 1.0
 2450 MHz Muscle: $\sigma = 2.01$ mho/m $\epsilon_r = 48.3$ $\rho = 1.00$ g/cm³
 Coarse: Dx = 15.0, Dy = 15.0, Dz = 10.0
 Cube 5x5x7; Powerdrift: -0.17 dB
 SAR (1g): 0.0037 mW/g, SAR (10g): 0.0022 mW/g

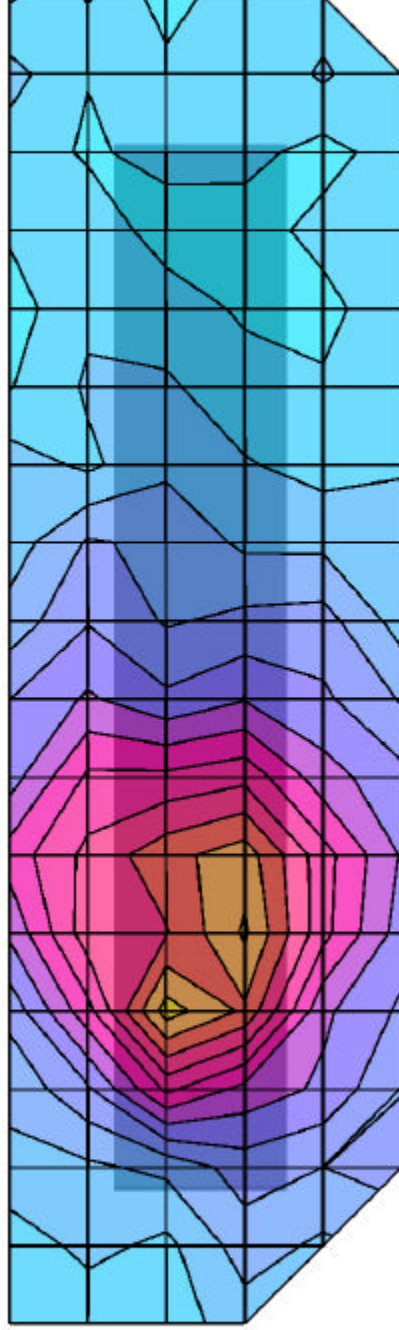
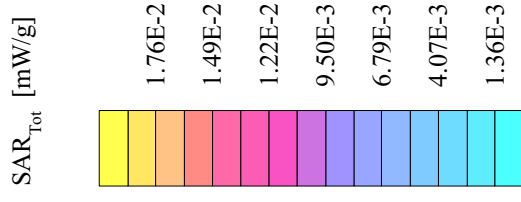
Body SAR - Back Side of Laptop PC - 1.5cm Separation Distance
 Samsung SWL-2200U Wireless USB LAN Adapter
 with SONY VAIO PCG-R505 Laptop PC (Horizontal USB Slot)
 DSSS Mode (Constant Transmit)
 Mid Channel [2437.00 MHz]
 Power Level: 4.5 dBm (EIRP)
 Ambient Temp. 23.3°C; Fluid Temp. 23.3°C
 Date Tested: December 09, 2002



Samsung Electro-Mechanics FCC ID: E2XSWL-2200U

SAM Phantom; Flat Section; Position: (180°,180°)
Probe: ET3DV6 - SN1387; ConvF(4.30,4.30,4.30); Crest factor: 1.0
2450 MHz Muscle: $\sigma = 2.01$ mho/m $\epsilon_r = 48.3$ $\rho = 1.00$ g/cm³
Coarse: Dx = 15.0, Dy = 15.0, Dz = 10.0
Cube 5x5x7; Powerdrift: -0.15 dB
SAR (1g): 0.0171 mW/g, SAR (10g): 0.0099 mW/g

Body SAR - Back Side of Laptop PC - 1.5cm Separation Distance
Samsung SWL-2200U Wireless USB LAN Adapter
with SONY VAIO PCG-R505 Laptop PC (Horizontal USB Slot)
DSSS Mode (Constant Transmit)
High Channel [2462.00 MHz]
Power Level: 6.6 dBm (EIRP)
Ambient Temp. 23.3°C; Fluid Temp. 23.3°C
Date Tested: December 09, 2002



APPENDIX B - SYSTEM CHECK DATA

System Performance Check - 2450MHz Dipole

SAM Phantom; Flat Section

Probe: ET3DV6 - SNI1387; ConvF(4.70,4.70,4.70); Crest factor: 1.0; 2450 MHz Brain: $\sigma = 1.81$ mho/m $\epsilon_r = 36.9$ $\rho = 1.00$ g/cm³

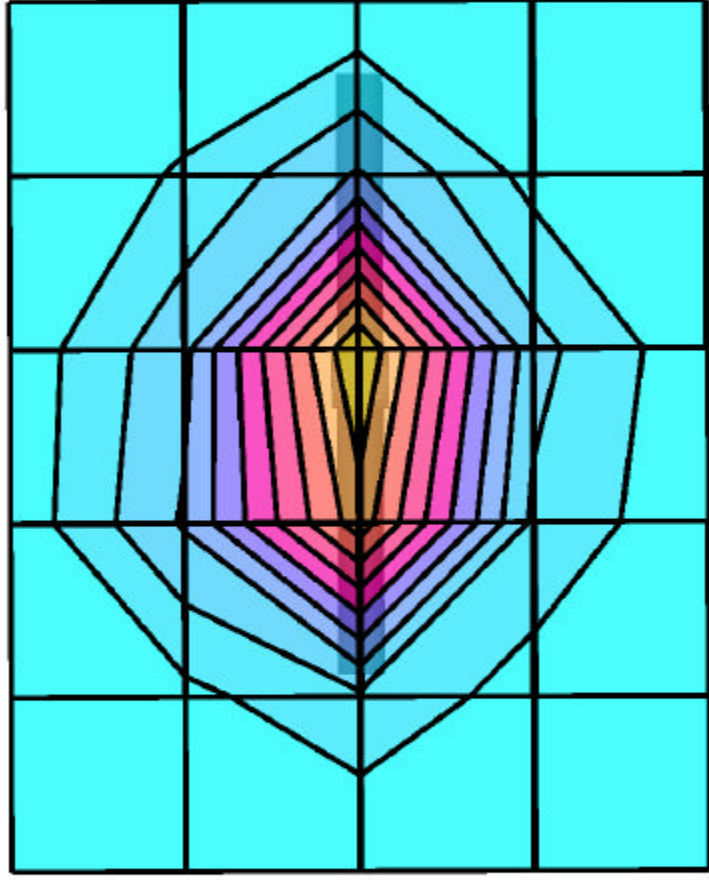
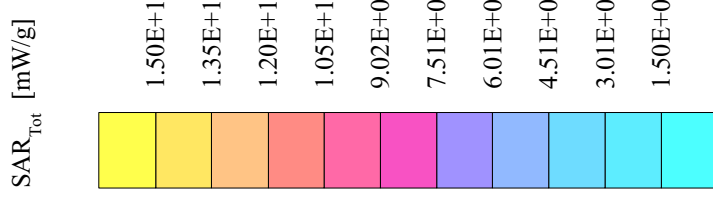
Cube 5x5x7; Peak: 29.9 mW/g, SAR (1g): 14.0 mW/g, SAR (10g): 6.37 mW/g, (Worst-case extrapolation)

Penetration depth: 6.3 (6.0, 7.1) [mm]; Powerdrift: -0.03 dB

Ambient Temp. 23.3°C; Fluid Temp. 24.0°C

Forward Conducted Power: 250 mW

Test Date: December 09, 2002



APPENDIX C - SYSTEM VALIDATION

2450MHz SYSTEM VALIDATION DIPOLE

Type:

2450MHz Validation Dipole

Serial Number:

150

Place of Calibration:

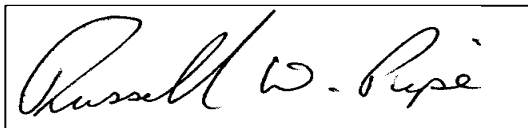
Celltech Research Inc.

Date of Calibration:

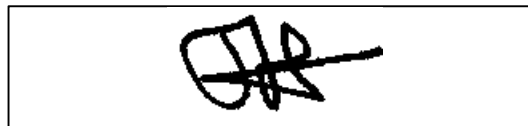
October 24, 2002

Celltech Research Inc. hereby certifies that this device has been calibrated on the date indicated above.

Calibrated by:



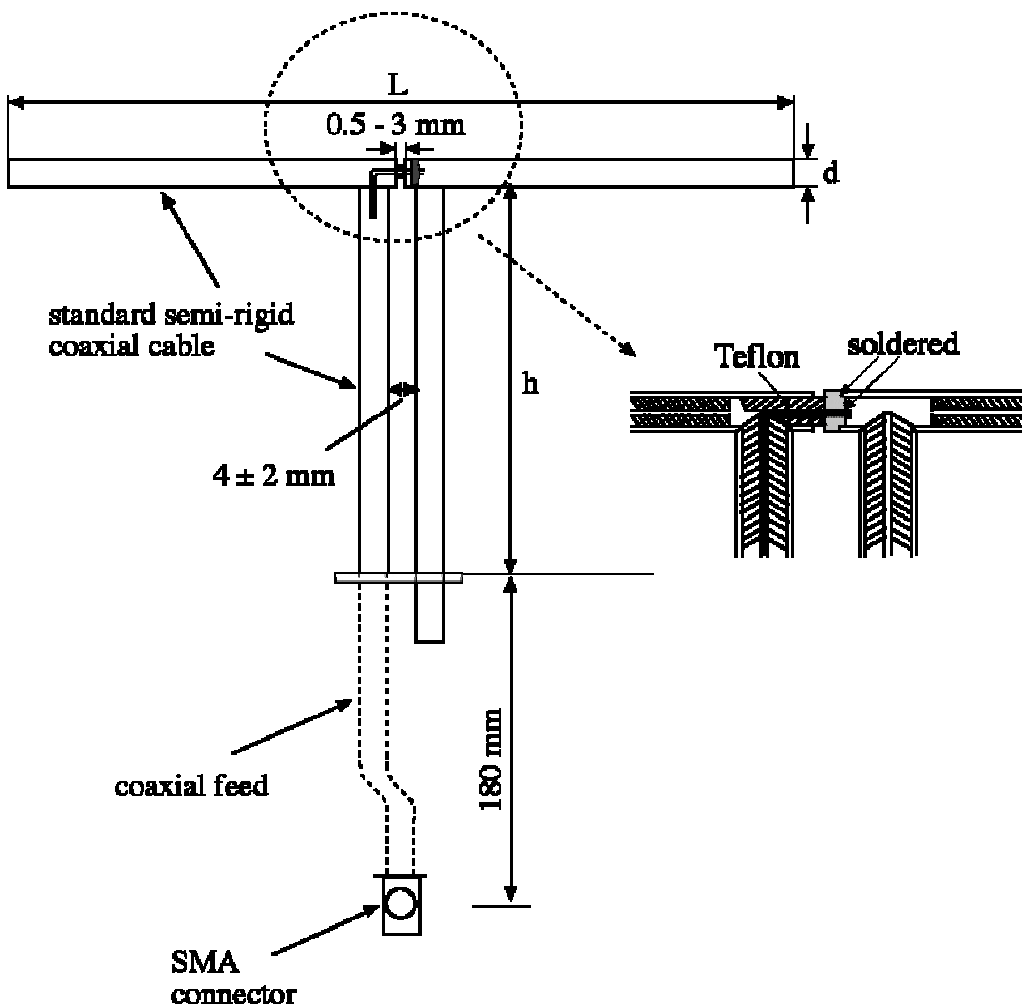
Approved by:



1. Dipole Construction & Electrical Characteristics

The validation dipole was constructed in accordance with the IEEE Std “Recommended Practice for Determining the Spatial-Peak Specific Absorption Rate (SAR) in the Human Body Due to Wireless Communications Devices: Experimental Techniques”. The electrical properties were measured using an HP 8753E Network Analyzer. The network analyzer was calibrated to the validation dipole N-type connector feed point using an HP85032E Type N calibration kit. The dipole was placed parallel to a planar phantom at a separation distance of 10.0mm from the simulating fluid using a loss-less dielectric spacer. The measured input impedance is:

Feed point impedance at 2450MHz	$\text{Re}\{Z\} = 49.838\Omega$ $\text{Im}\{Z\} = 0.2207\Omega$
Return Loss at 2450MHz	-49.398 dB



Validation Dipole Dimensions

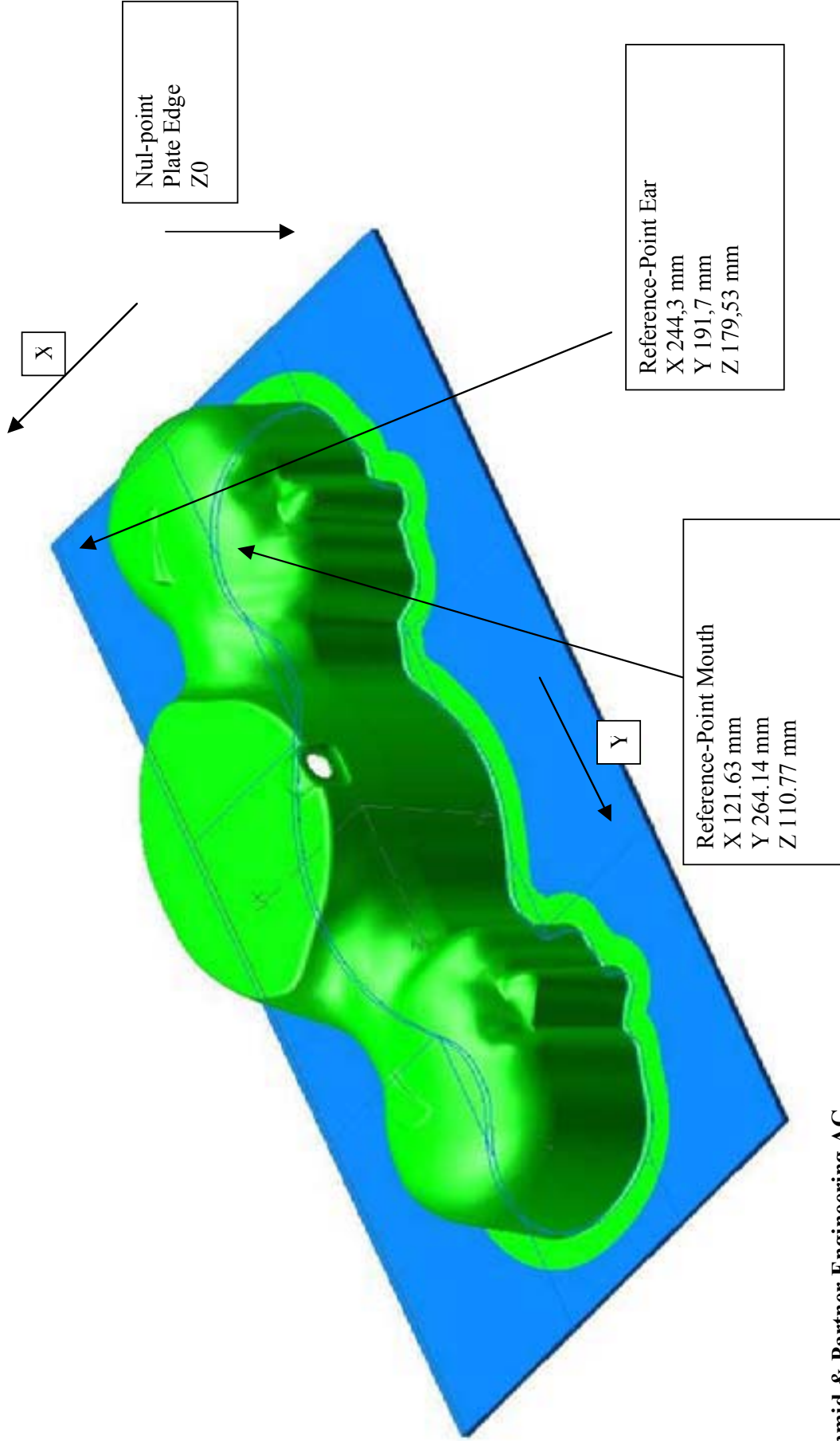
Frequency (MHz)	L (mm)	h (mm)	d (mm)
300	420.0	250.0	6.2
450	288.0	167.0	6.2
835	161.0	89.8	3.6
900	149.0	83.3	3.6
1450	89.1	51.7	3.6
1800	72.0	41.7	3.6
1900	68.0	39.5	3.6
2000	64.5	37.5	3.6
2450	51.8	30.6	3.6
3000	41.5	25.0	3.6

2. Validation Phantom

The validation phantom is the SAM (Specific Anthropomorphic Mannequin) phantom manufactured by Schmid & Partner Engineering AG. The SAM phantom is a Fiberglass shell integrated in a wooden table. The shape of the shell corresponds to the phantom defined by SCC34-SC2. It enables the dosimetric evaluation of left and right hand phone usage as well as body mounted usage at the flat phantom region. A cover prevents evaporation of the liquid. Reference markings on the phantom allow the complete setup of all predefined phantom positions and measurement grids by manually teaching three points in the robot.

Shell Thickness: 2.0 ± 0.1 mm
Filling Volume: Approx. 20 liters
Dimensions: 50 cm (W) x 100 cm (L)

SAM Twin-Phantom



2450MHz Dipole Calibration



2450MHz Dipole Calibration



3. Measurement Conditions

The planar phantom was filled with brain simulating tissue having the following electrical parameters at 2450MHz:

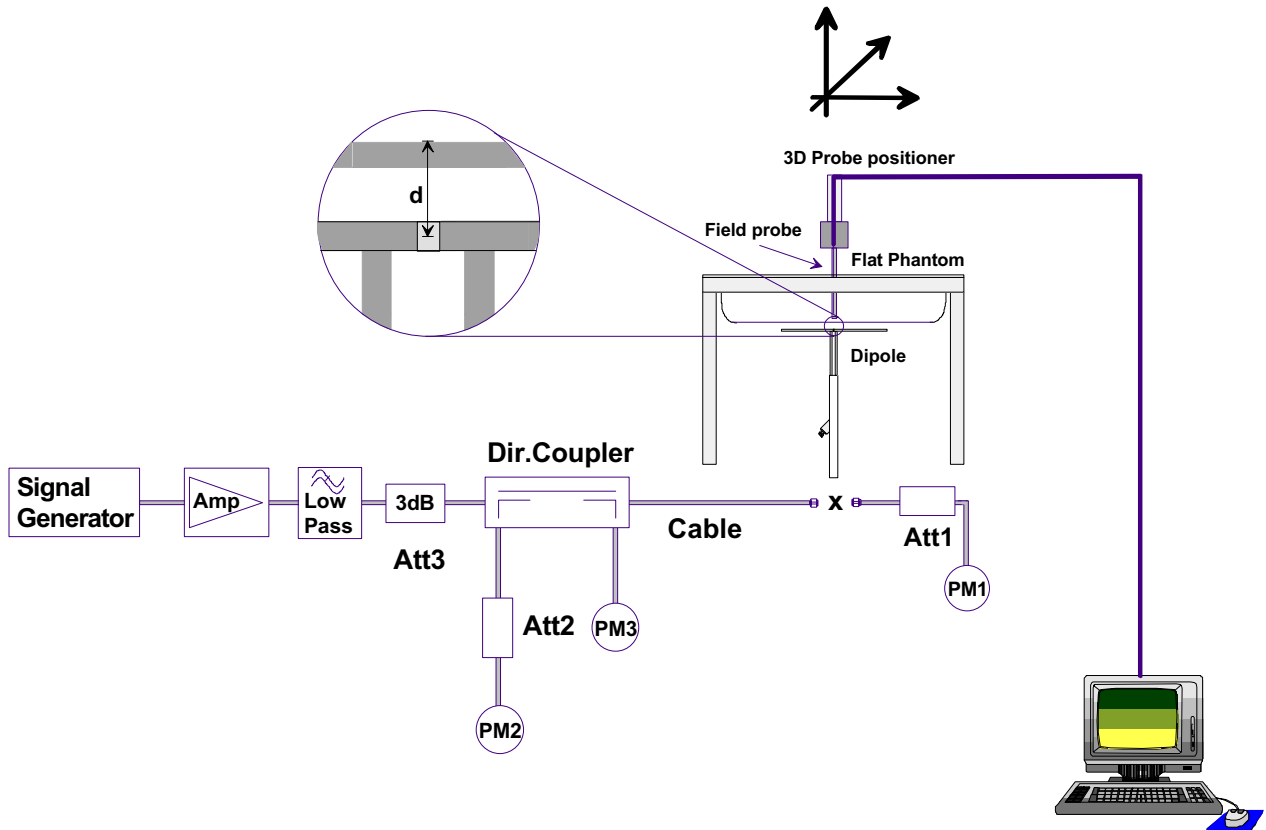
Relative Permittivity:	36.8
Conductivity:	1.79 mho/m
Ambient Temperature:	23.6°C
Fluid Temperature:	23.8°C
Fluid Depth:	≥ 15cm

The 2450MHz simulating tissue consists of the following ingredients:

Ingredient	Percentage by weight
Water	55.20%
Glycol Monobutyl	44.80%
Target Dielectric Parameters at 22°C	$\epsilon_r = 39.2$ (+/-10%) $\sigma = 1.80$ S/m (+/-5%)

4. SAR Measurement

The SAR measurement was performed with the E-field probe in mechanical detection mode only. The setup and determination of the forward power into the dipole was performed using the following procedures.



First, the power meter PM1 (including attenuator Att1) is connected to the cable to measure the forward power at the location of the dipole connector (X). The signal generator is adjusted for the desired forward power at the dipole connector (taking into account the attenuation of Att1) as read by power meter PM2. After connecting the cable to the dipole, the signal generator is readjusted for the same reading at power meter PM2. If the signal generator does not allow adjustment in 0.01dB steps, the remaining difference at PM2 must be taken into consideration. PM3 records the reflected power from the dipole to ensure that the value is not changed from the previous value. The reflected power should be 20dB below the forward power.

Ten SAR measurements were performed in order to achieve repeatability and to establish an average target value.

Validation Dipole SAR Test Results

Validation Measurement	SAR @ 0.25W Input averaged over 1g	SAR @ 1W Input averaged over 1g	SAR @ 0.25W Input averaged over 10g	SAR @ 1W Input averaged over 10g	Peak SAR @ 0.25W Input
Test 1	14.4	57.6	6.55	26.20	30.5
Test 2	14.2	56.8	6.44	25.76	30.0
Test 3	14.0	56.0	6.35	25.40	29.7
Test 4	13.9	55.6	6.32	25.28	29.5
Test 5	14.0	56.0	6.33	25.32	29.7
Test 6	14.0	56.0	6.33	25.32	29.7
Test 7	13.9	55.6	6.31	25.24	29.5
Test 8	13.8	55.2	6.28	25.12	29.3
Test 9	13.8	55.2	6.28	25.12	29.4
Test10	14.0	56.0	6.33	25.32	29.7
Average Value	14.0	56.0	6.35	25.41	29.7

The results have been normalized to 1W (forward power) into the dipole.

Averaged over 1cm (1g) of tissue: 56.00 mW/g

Averaged over 10cm (10g) of tissue: 25.41 mW/g

24 Oct 2002 09:28:50

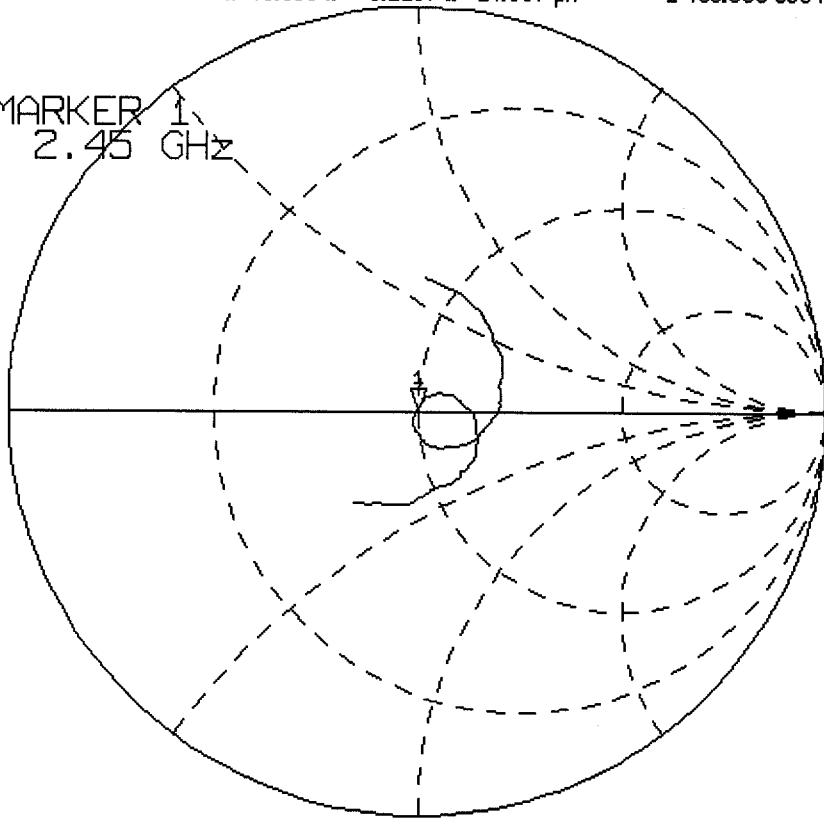
CH1 S11 1 U FS 1: 49.838 Ω 0.2207 Ω 14.337 pH 2 450.000 000 MHz

PRm

MARKER 1
2.45 GHz

Cor

↑

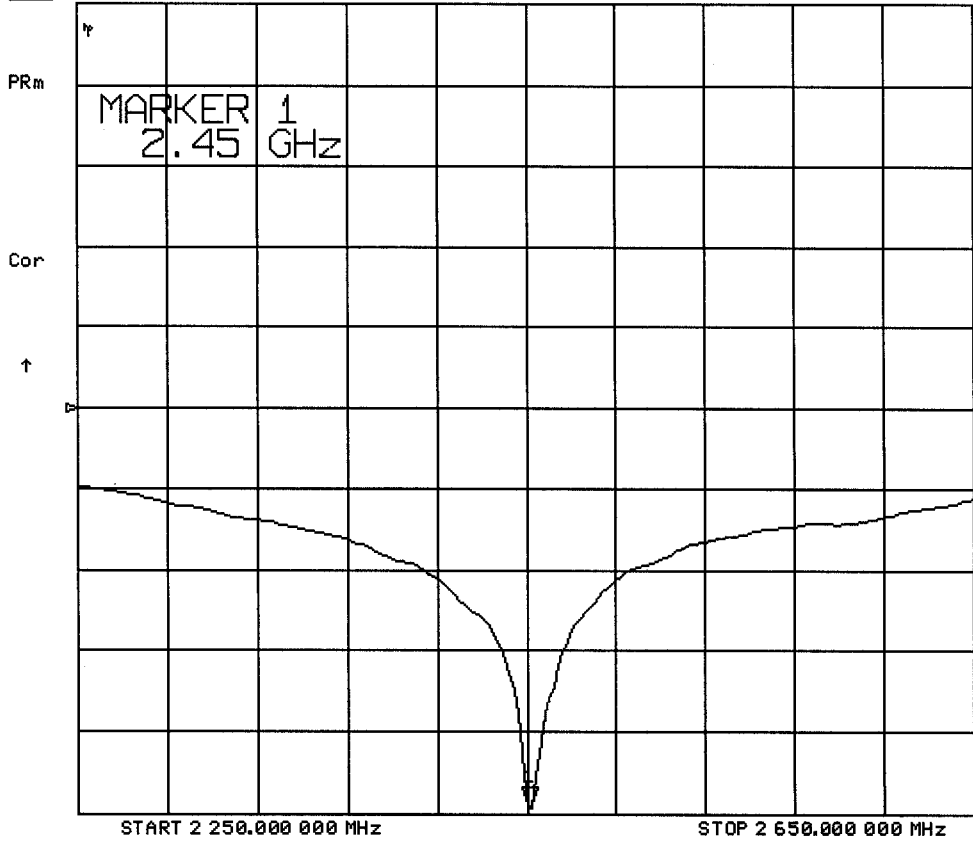


START 2 250.000 000 MHz

STOP 2 650.000 000 MHz

24 Oct 2002 09:28:12

CH1 S11 LOG 10 dB/REF 0 dB 11-49.398 dB 2 450.000 000 MHz



Dipole 2450MHz

SAM Phantom; Flat Section

Probe: ET3DV6 - SNI387; ConvF(4.70,4.70,4.70); Crest factor: 1.0; 2450 MHz Brain: $\sigma = 1.79 \text{ mho/m}$ $\epsilon_r = 36.8 \rho = 1.00 \text{ g/cm}^3$

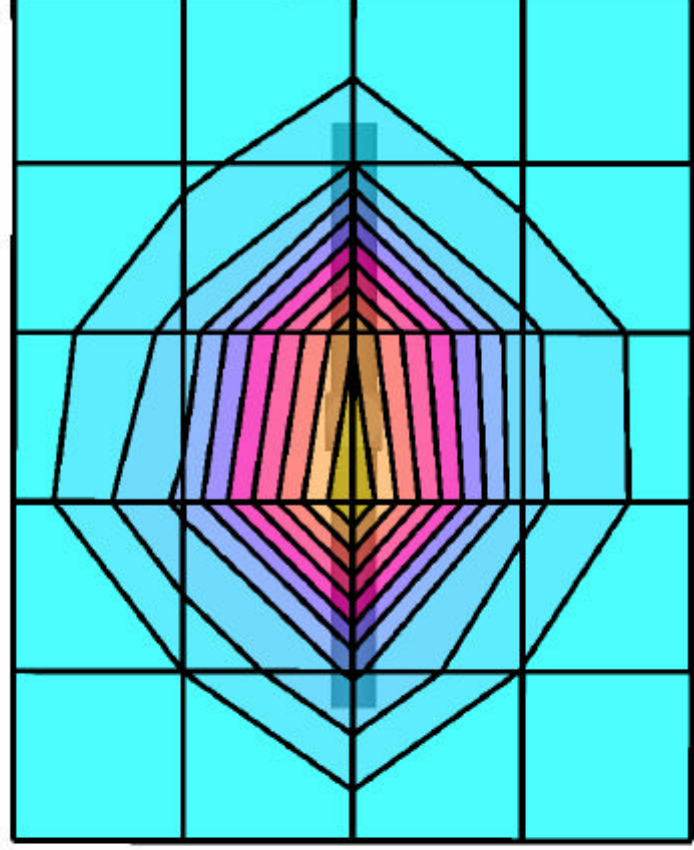
Cubes (4): Peak: 29.7 mW/g $\pm 0.04 \text{ dB}$, SAR (1g): 14.0 mW/g $\pm 0.04 \text{ dB}$, SAR (10g): 6.35 mW/g $\pm 0.04 \text{ dB}$, (Worst-case extrapolation)

Penetration depth: 6.4 (6.1, 7.2) [mm]; Powerdrift: -0.04 dB

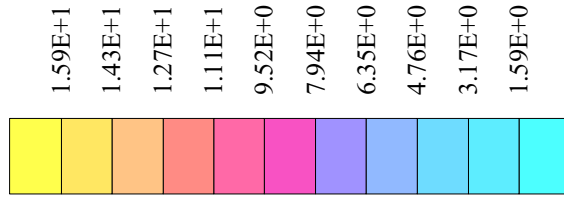
Ambient Temp.: 23.6°C; Fluid Temp.: 23.8°C

Forward Conducted Power: 250 mW

Calibration Date: October 24, 2002



SAR_{tot} [mW/g]



2450MHz System Validation

Measured Fluid Dielectric Parameters (Brain)

October 24, 2002

Frequency	ϵ'	ϵ''
2.350000000 GHz	37.2108	12.9039
2.360000000 GHz	37.1695	12.9350
2.370000000 GHz	37.1398	12.9630
2.380000000 GHz	37.1057	12.9945
2.390000000 GHz	37.0746	13.0290
2.400000000 GHz	37.0424	13.0464
2.410000000 GHz	36.9746	13.0743
2.420000000 GHz	36.9322	13.1074
2.430000000 GHz	36.8908	13.1372
2.440000000 GHz	36.8449	13.1527
2.450000000 GHz	36.7983	13.1767
2.460000000 GHz	36.7651	13.2038
2.470000000 GHz	36.7300	13.2377
2.480000000 GHz	36.7004	13.2677
2.490000000 GHz	36.6658	13.2862
2.500000000 GHz	36.6120	13.2988
2.510000000 GHz	36.5655	13.3268
2.520000000 GHz	36.5147	13.3582
2.530000000 GHz	36.4743	13.3922
2.540000000 GHz	36.4044	13.4131
2.550000000 GHz	36.3807	13.4402

APPENDIX D - PROBE CALIBRATION

Schmid & Partner Engineering AG

Zeughausstrasse 43, 8004 Zurich, Switzerland, Phone +41 1 245 97 00, Fax +41 1 245 97 79

Calibration Certificate

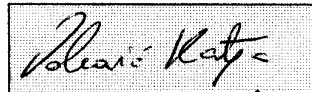
Dosimetric E-Field Probe

Type:	ET3DV6
Serial Number:	1387
Place of Calibration:	Zurich
Date of Calibration:	February 22, 2002
Calibration Interval:	12 months

Schmid & Partner Engineering AG hereby certifies, that this device has been calibrated on the date indicated above. The calibration was performed in accordance with specifications and procedures of Schmid & Partner Engineering AG.

Wherever applicable, the standards used in the calibration process are traceable to international standards. In all other cases the standards of the Laboratory for EMF and Microwave Electronics at the Swiss Federal Institute of Technology (ETH) in Zurich, Switzerland have been applied.

Calibrated by:



Approved by:



Probe ET3DV6

SN:1387

Manufactured:	September 21, 1999
Last calibration:	September 22, 1999
Recalibrated:	February 22, 2002

Calibrated for System DASY3

DASY3 - Parameters of Probe: ET3DV6 SN:1387

Sensitivity in Free Space

NormX	1.58 $\mu\text{V}/(\text{V}/\text{m})^2$
NormY	1.67 $\mu\text{V}/(\text{V}/\text{m})^2$
NormZ	1.67 $\mu\text{V}/(\text{V}/\text{m})^2$

Diode Compression

DCP X	97	mV
DCP Y	97	mV
DCP Z	97	mV

Sensitivity in Tissue Simulating Liquid

Head	900 MHz	$\epsilon_r = 41.5 \pm 5\%$	$\sigma = 0.97 \pm 5\%$ mho/m
Head	835 MHz	$\epsilon_r = 41.5 \pm 5\%$	$\sigma = 0.90 \pm 5\%$ mho/m
	ConvF X	6.6 $\pm 9.5\%$ (k=2)	Boundary effect:
	ConvF Y	6.6 $\pm 9.5\%$ (k=2)	Alpha 0.40
	ConvF Z	6.6 $\pm 9.5\%$ (k=2)	Depth 2.38
Head	1800 MHz	$\epsilon_r = 40.0 \pm 5\%$	$\sigma = 1.40 \pm 5\%$ mho/m
Head	1900 MHz	$\epsilon_r = 40.0 \pm 5\%$	$\sigma = 1.40 \pm 5\%$ mho/m
	ConvF X	5.4 $\pm 9.5\%$ (k=2)	Boundary effect:
	ConvF Y	5.4 $\pm 9.5\%$ (k=2)	Alpha 0.57
	ConvF Z	5.4 $\pm 9.5\%$ (k=2)	Depth 2.18

Boundary Effect

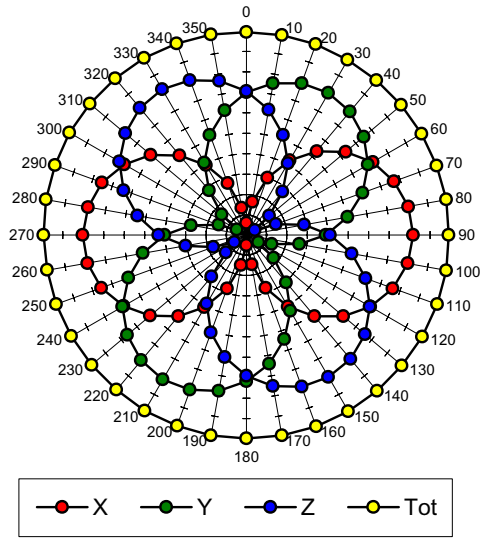
Head	900 MHz	Typical SAR gradient: 5 % per mm	
	Probe Tip to Boundary	1 mm	2 mm
	SAR _{be} [%] Without Correction Algorithm	9.7	5.4
	SAR _{be} [%] With Correction Algorithm	0.3	0.6
Head	1800 MHz	Typical SAR gradient: 10 % per mm	
	Probe Tip to Boundary	1 mm	2 mm
	SAR _{be} [%] Without Correction Algorithm	11.5	7.3
	SAR _{be} [%] With Correction Algorithm	0.1	0.3

Sensor Offset

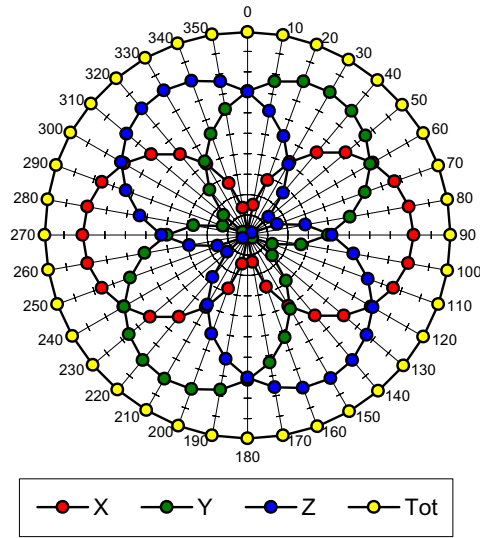
Probe Tip to Sensor Center	2.7	mm
Optical Surface Detection	1.3 \pm 0.2	mm

Receiving Pattern (ϕ , $\theta = 0^\circ$)

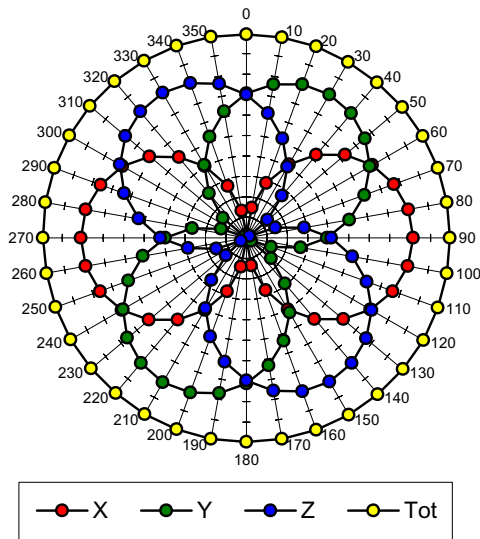
f = 30 MHz, TEM cell ifi110



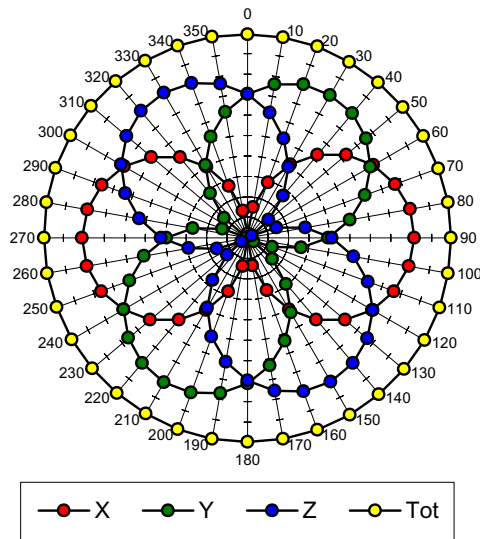
f = 100 MHz, TEM cell ifi110

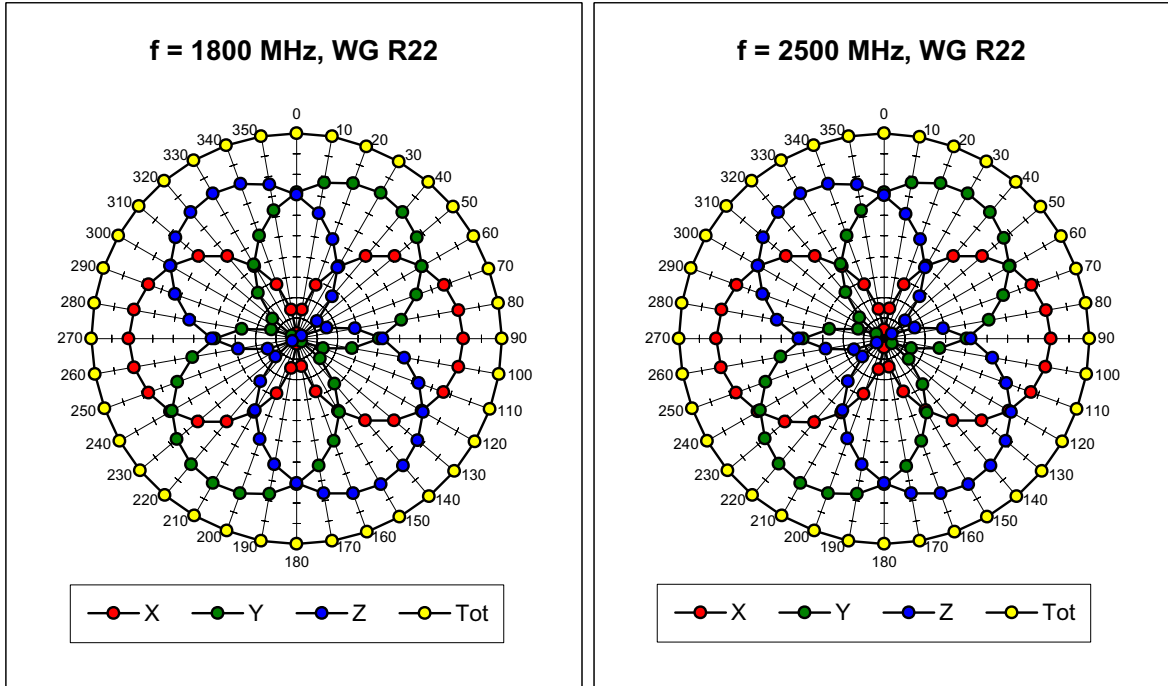


f = 300 MHz, TEM cell ifi110

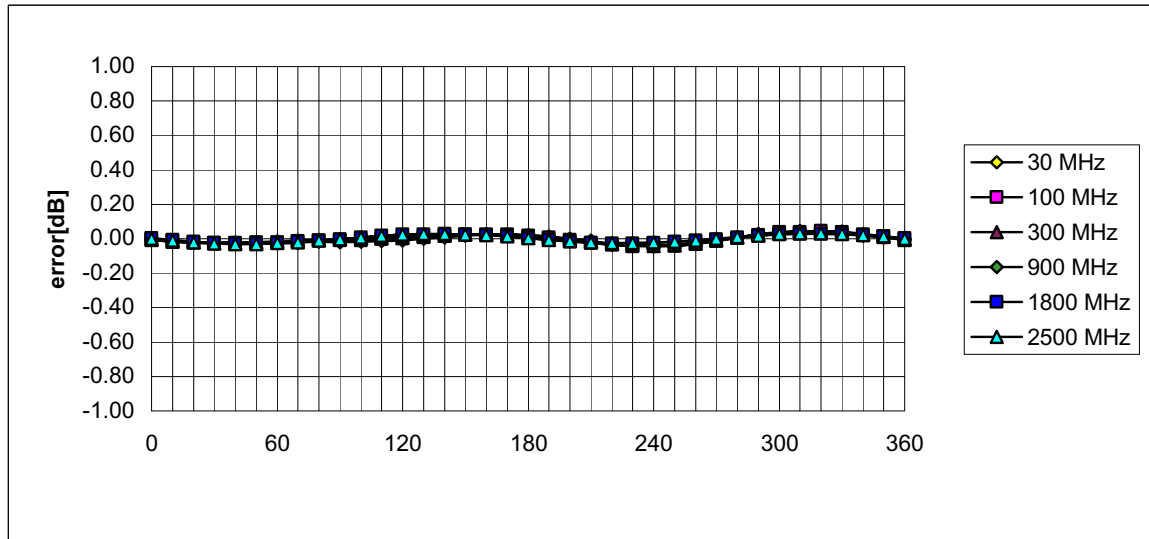


f = 900 MHz, TEM cell ifi110



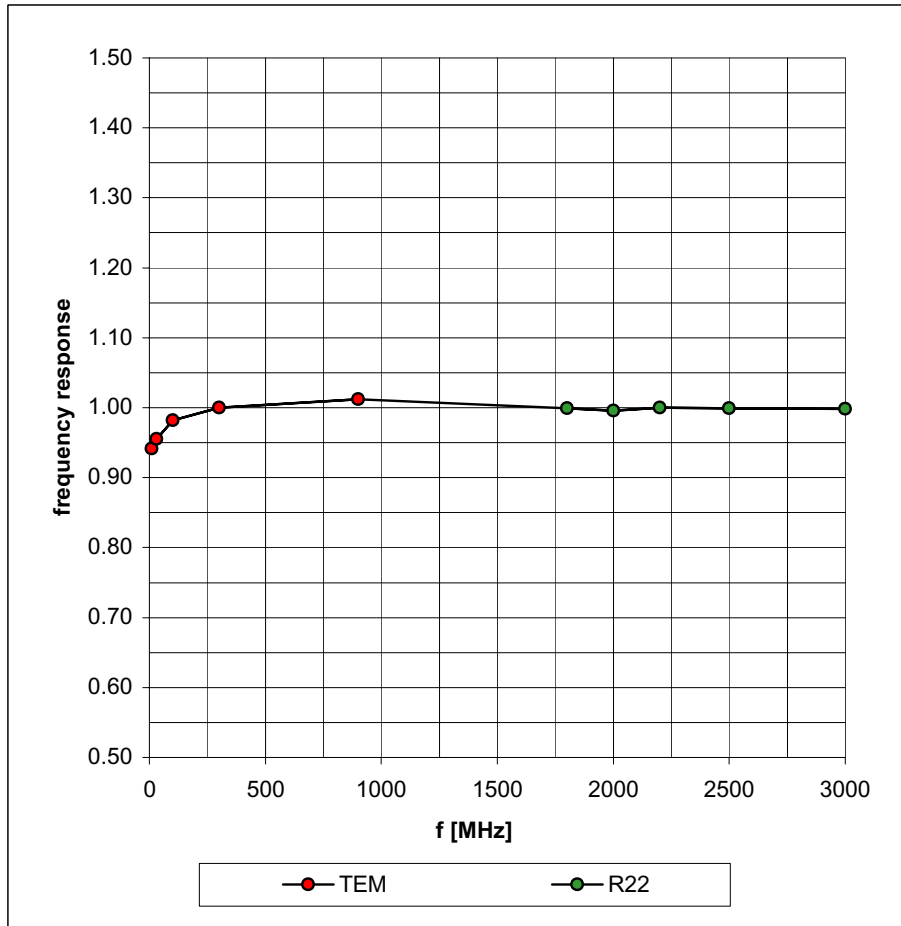


Isotropy Error (ϕ), $\theta = 0^\circ$

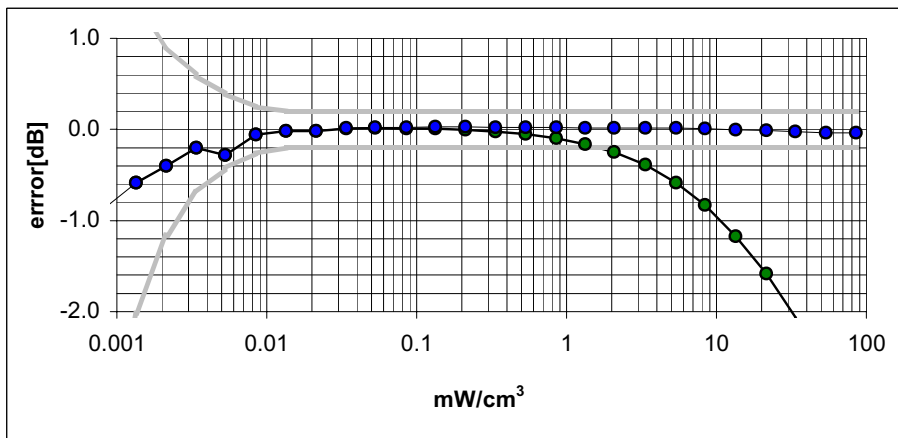
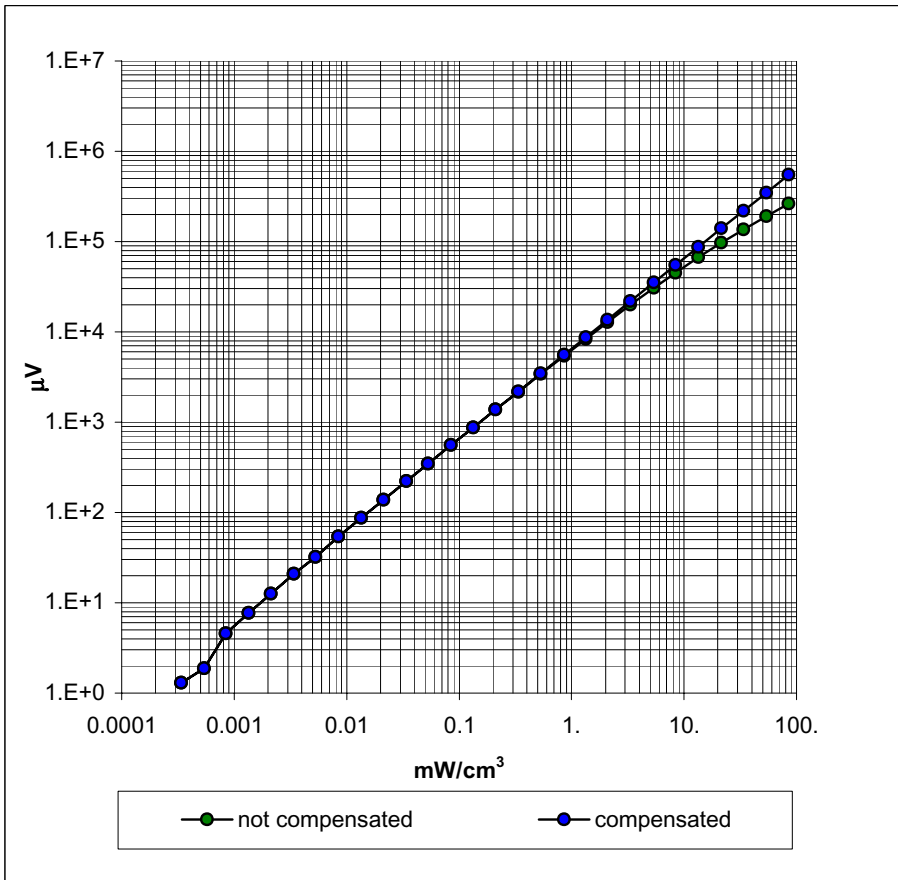


Frequency Response of E-Field

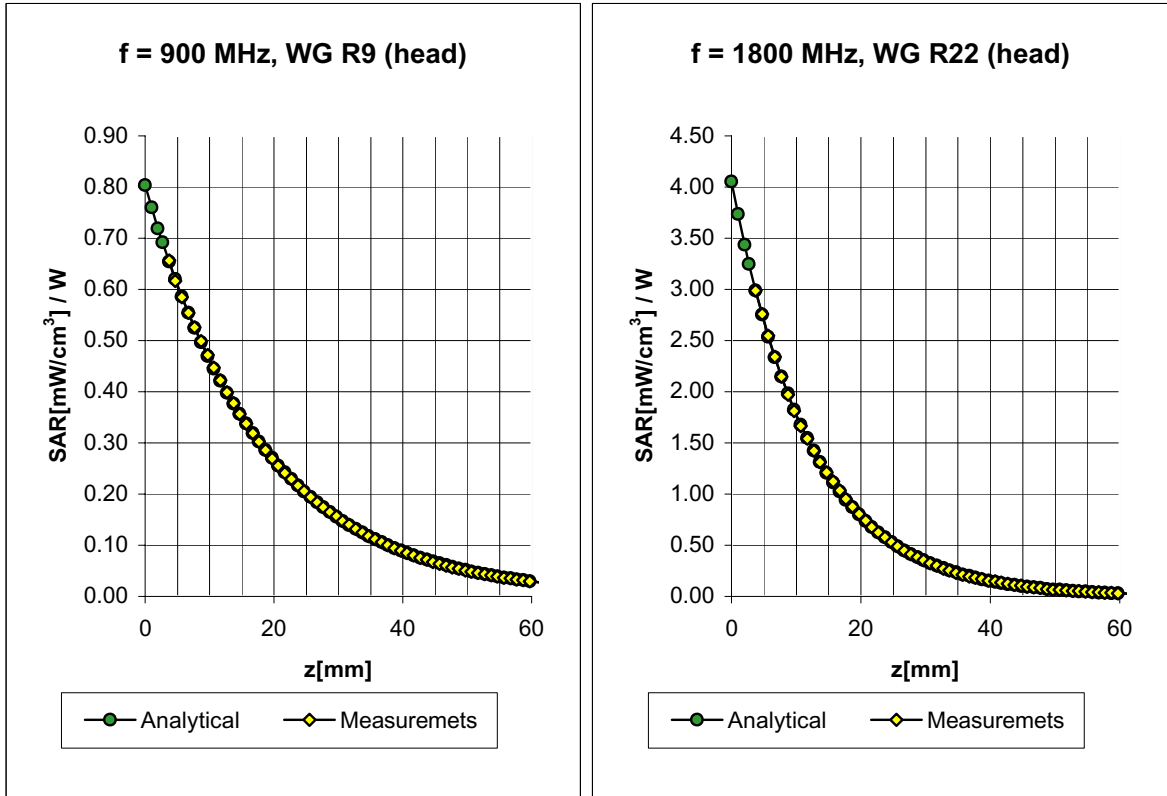
(TEM-Cell:ifi110, Waveguide R22)



Dynamic Range f(SAR_{brain}) (Waveguide R22)



Conversion Factor Assessment

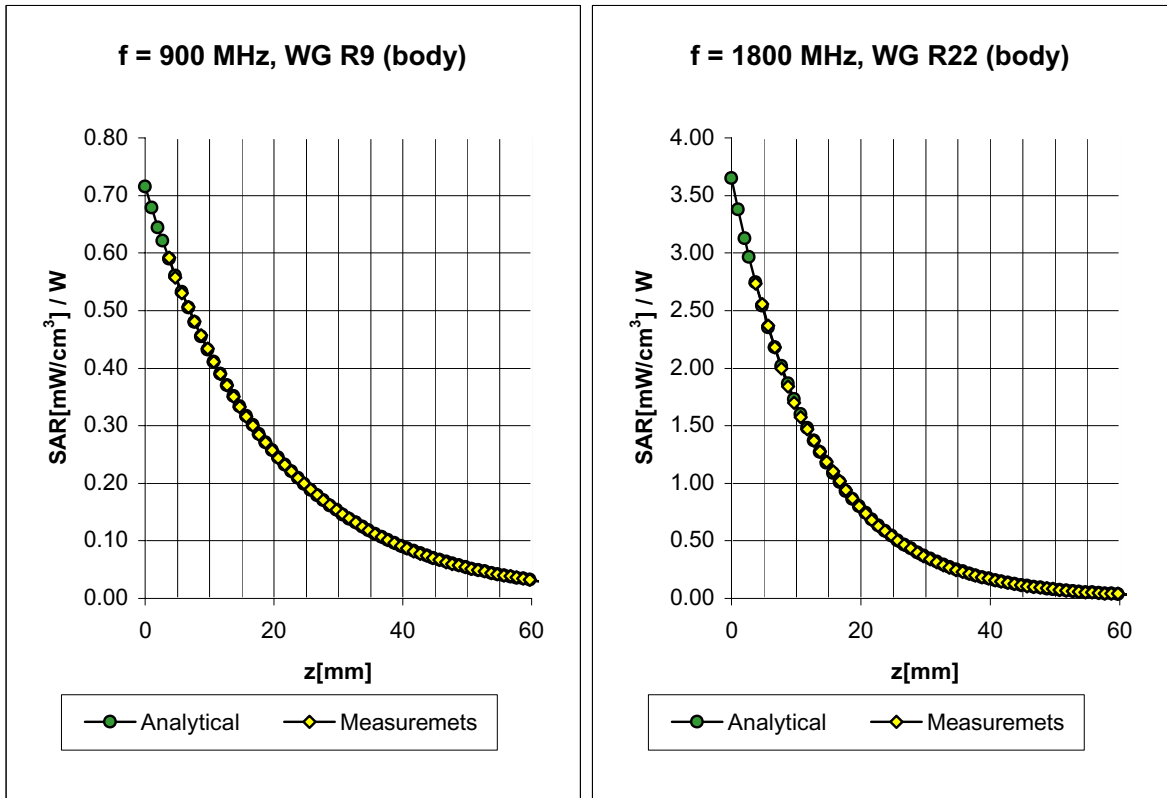


Head	900 MHz	$\epsilon_r = 41.5 \pm 5\%$	$\sigma = 0.97 \pm 5\% \text{ mho/m}$
Head	835 MHz	$\epsilon_r = 41.5 \pm 5\%$	$\sigma = 0.90 \pm 5\% \text{ mho/m}$
	ConvF X	6.6 $\pm 9.5\%$ (k=2)	Boundary effect:
	ConvF Y	6.6 $\pm 9.5\%$ (k=2)	Alpha 0.40
	ConvF Z	6.6 $\pm 9.5\%$ (k=2)	Depth 2.38
Head	1800 MHz	$\epsilon_r = 40.0 \pm 5\%$	$\sigma = 1.40 \pm 5\% \text{ mho/m}$
Head	1900 MHz	$\epsilon_r = 40.0 \pm 5\%$	$\sigma = 1.40 \pm 5\% \text{ mho/m}$
	ConvF X	5.4 $\pm 9.5\%$ (k=2)	Boundary effect:
	ConvF Y	5.4 $\pm 9.5\%$ (k=2)	Alpha 0.57
	ConvF Z	5.4 $\pm 9.5\%$ (k=2)	Depth 2.18

ET3DV6 SN:1387

February 22, 2002

Conversion Factor Assessment



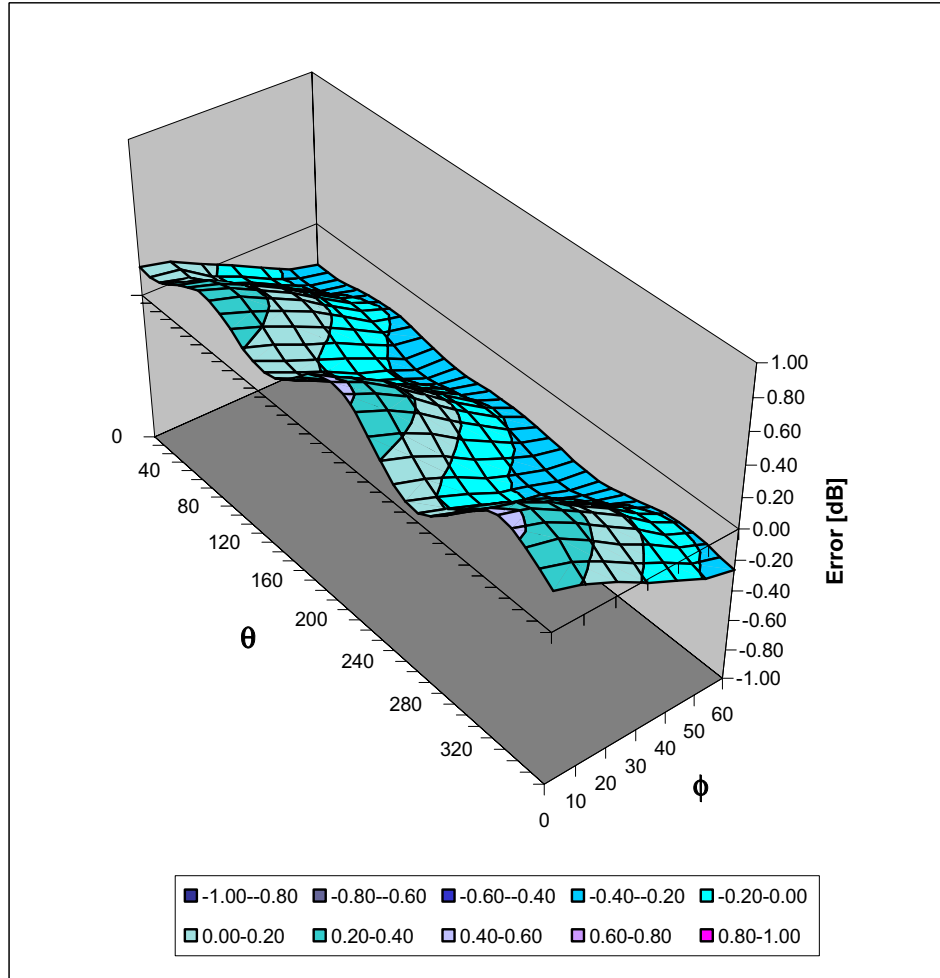
Body	900 MHz	$\epsilon_r = 55.0 \pm 5\%$	$\sigma = 1.05 \pm 5\% \text{ mho/m}$
Body	835 MHz	$\epsilon_r = 55.2 \pm 5\%$	$\sigma = 0.97 \pm 5\% \text{ mho/m}$
	ConvF X	6.3 $\pm 9.5\%$ (k=2)	Boundary effect:
	ConvF Y	6.3 $\pm 9.5\%$ (k=2)	Alpha 0.42
	ConvF Z	6.3 $\pm 9.5\%$ (k=2)	Depth 2.44
Body	1800 MHz	$\epsilon_r = 53.3 \pm 5\%$	$\sigma = 1.52 \pm 5\% \text{ mho/m}$
Body	1900 MHz	$\epsilon_r = 53.3 \pm 5\%$	$\sigma = 1.52 \pm 5\% \text{ mho/m}$
	ConvF X	5.0 $\pm 9.5\%$ (k=2)	Boundary effect:
	ConvF Y	5.0 $\pm 9.5\%$ (k=2)	Alpha 0.76
	ConvF Z	5.0 $\pm 9.5\%$ (k=2)	Depth 2.01

ET3DV6 SN:1387

February 22, 2002

Deviation from Isotropy in HSL

Error (θ, ϕ), $f = 900$ MHz



Additional Conversion Factors for Dosimetric E-Field Probe

Type:

ET3DV6

Serial Number:

1387

Place of Assessment:

Zurich

Date of Assessment:

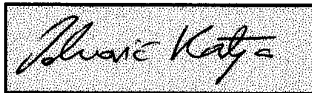
February 25, 2002

Probe Calibration Date:

February 22, 2002

Schmid & Partner Engineering AG hereby certifies that conversion factor(s) of this probe have been evaluated on the date indicated above. The assessment was performed using the FDTD numerical code SEMCAD of Schmid & Partner Engineering AG. Since the evaluation is coupled with measured conversion factors, it has to be recalculated yearly, i.e., following the re-calibration schedule of the probe. The uncertainty of the numerical assessment is based on the extrapolation from measured value at 900 MHz or at 1800 MHz.

Assessed by:



Dosimetric E-Field Probe ET3DV6 SN:1387

Conversion Factor (\pm standard deviation)

150 MHz	ConvF	$9.2 \pm 8\%$	$\epsilon_r = 52.3$ $\sigma = 0.76 \text{ mho/m}$ (head tissue)
300 MHz	ConvF	$8.0 \pm 8\%$	$\epsilon_r = 45.3$ $\sigma = 0.87 \text{ mho/m}$ (head tissue)
450 MHz	ConvF	$7.3 \pm 8\%$	$\epsilon_r = 43.5$ $\sigma = 0.87 \text{ mho/m}$ (head tissue)
2450 MHz	ConvF	$4.7 \pm 8\%$	$\epsilon_r = 39.2$ $\sigma = 1.80 \text{ mho/m}$ (head tissue)
150 MHz	ConvF	$8.8 \pm 8\%$	$\epsilon_r = 61.9$ $\sigma = 0.80 \text{ mho/m}$ (body tissue)
450 MHz	ConvF	$7.7 \pm 8\%$	$\epsilon_r = 56.7$ $\sigma = 0.94 \text{ mho/m}$ (body tissue)
2450 MHz	ConvF	$4.3 \pm 8\%$	$\epsilon_r = 52.7$ $\sigma = 1.95 \text{ mho/m}$ (body tissue)

APPENDIX E - MEASURED FLUID DIELECTRIC PARAMETERS

2450MHz System Performance Check

Measured Fluid Dielectric Parameters (Brain)

December 09, 2002

Frequency	e'	e''
2.400000000 GHz	37.1387	13.1481
2.405000000 GHz	37.1063	13.1535
2.410000000 GHz	37.0862	13.1684
2.415000000 GHz	37.0570	13.1742
2.420000000 GHz	37.0360	13.1873
2.425000000 GHz	36.9995	13.2039
2.430000000 GHz	36.9718	13.2324
2.435000000 GHz	36.9639	13.2518
2.440000000 GHz	36.9528	13.2631
2.445000000 GHz	36.9226	13.2729
2.450000000 GHz	36.8983	13.2939
2.455000000 GHz	36.8758	13.3137
2.460000000 GHz	36.8582	13.3327
2.465000000 GHz	36.8340	13.3460
2.470000000 GHz	36.8243	13.3644
2.475000000 GHz	36.7937	13.3826
2.480000000 GHz	36.7885	13.3926
2.485000000 GHz	36.7592	13.3944
2.490000000 GHz	36.7442	13.4117
2.495000000 GHz	36.7257	13.4135
2.500000000 GHz	36.6990	13.4215

2450MHz EUT Evaluation (Body)

Measured Fluid Dielectric Parameters (Muscle)

December 09, 2002

Frequency	e'	e''
2.350000000 GHz	48.7617	14.3894
2.360000000 GHz	48.7259	14.4372
2.370000000 GHz	48.6960	14.4859
2.380000000 GHz	48.6592	14.5082
2.390000000 GHz	48.6206	14.5400
2.400000000 GHz	48.5735	14.5785
2.410000000 GHz	48.5367	14.6094
2.420000000 GHz	48.4746	14.6382
2.430000000 GHz	48.4280	14.6917
2.440000000 GHz	48.3755	14.7112
2.450000000 GHz	48.3291	14.7624
2.460000000 GHz	48.2912	14.8047
2.470000000 GHz	48.2517	14.8564
2.480000000 GHz	48.2227	14.8827
2.490000000 GHz	48.1942	14.9022
2.500000000 GHz	48.1575	14.9317
2.510000000 GHz	48.1253	14.9460
2.520000000 GHz	48.0724	14.9921
2.530000000 GHz	48.0182	15.0300
2.540000000 GHz	47.9741	15.0636
2.550000000 GHz	47.9339	15.0935

APPENDIX F - SAM PHANTOM CERTIFICATE OF CONFORMITY

Schmid & Partner Engineering AG

Zeughausstrasse 43, 8004 Zurich, Switzerland, Phone +41 1 245 97 00, Fax +41 1 245 97 79

Certificate of conformity / First Article Inspection

Item	SAM Twin Phantom V4.0
Type No	QD 000 P40 BA
Series No	TP-1002 and higher
Manufacturer / Origin	Untersee Composites Hauptstr. 69 CH-8559 Fruthwilen Switzerland

Tests

The series production process used allows the limitation to test of first articles. Complete tests were made on the pre-series Type No. QD 000 P40 AA, Serial No. TP-1001 and on the series first article Type No. QD 000 P40 BA, Serial No. TP-1006. Certain parameters have been retested using further series units (called samples).

Test	Requirement	Details	Units tested
Shape	Compliance with the geometry according to the CAD model.	IT'IS CAD File (*)	First article, Samples
Material thickness	Compliant with the requirements according to the standards	2mm +/- 0.2mm in specific areas	First article, Samples
Material parameters	Dielectric parameters for required frequencies	200 MHz – 3 GHz Relative permittivity < 5 Loss tangent < 0.05.	Material sample TP 104-5
Material resistivity	The material has been tested to be compatible with the liquids defined in the standards	Liquid type HSL 1800 and others according to the standard.	Pre-series, First article

Standards

- [1] CENELEC EN 50361
- [2] IEEE P1528-200x draft 6.5
- [3] IEC PT 62209 draft 0.9

(*) The IT'IS CAD file is derived from [2] and is also within the tolerance requirements of the shapes of [1] and [3].

Conformity

Based on the sample tests above, we certify that this item is in compliance with the uncertainty requirements of SAR measurements specified in standard [1] and draft standards [2] and [3].

Date 18.11.2001

Signature / Stamp



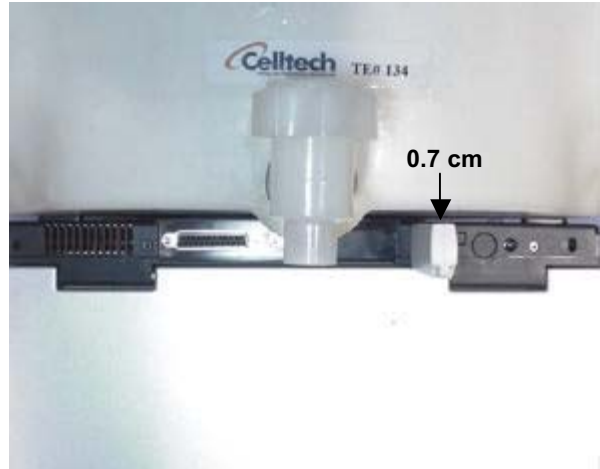
**Schmid & Partner
Engineering AG**



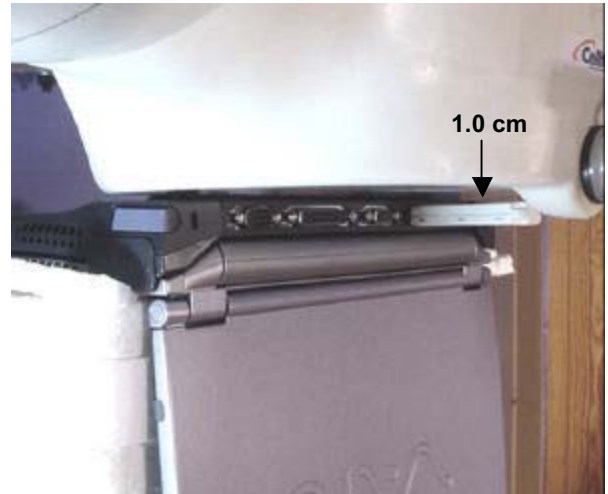
Zeughausstrasse 43, CH-8004 Zurich
Tel. +41 1 245 97 00, Fax +41 1 245 97 79

APPENDIX G - SAR TEST SETUP & EUT PHOTOGRAPHS

BODY SAR TEST SETUP PHOTOGRAPHS
Bottom Side of Gateway Solo 1400 Laptop PC (Vertical USB Slot)
0.0cm Separation Distance (Laptop PC to Planar Phantom)
(0.7 cm Spacing between EUT & Planar Phantom)



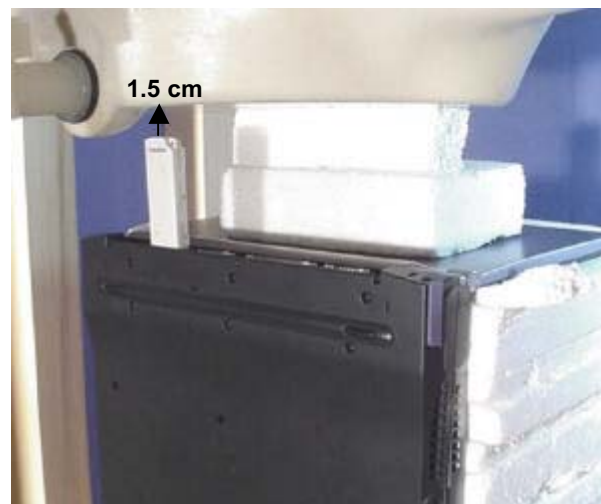
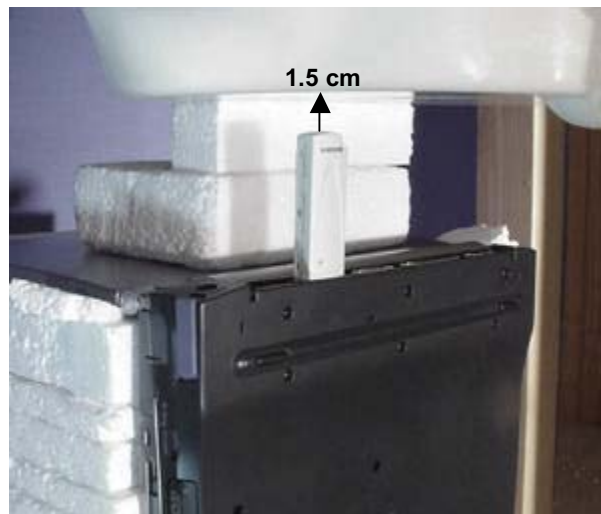
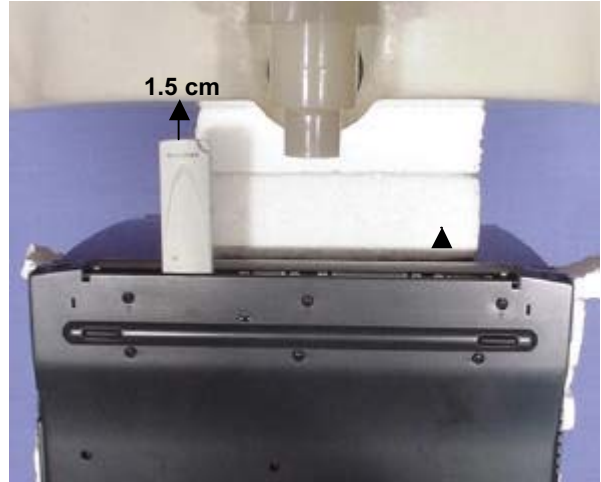
BODY SAR TEST SETUP PHOTOGRAPHS
Bottom Side of SONY VAIO PCG-R505 Laptop PC (Horizontal USB Slot)
0.0cm Separation Distance (Laptop PC to Planar Phantom)
(1.0 cm Spacing between EUT & Planar Phantom)



BODY SAR TEST SETUP PHOTOGRAPHS
Back Side of Gateway Solo 1400 Laptop PC (Vertical USB Slot)
1.5cm Separation Distance (EUT to Planar Phantom)



BODY SAR TEST SETUP PHOTOGRAPHS
Back Side of SONY VAIO PCG-R505 Laptop PC (Horizontal USB Slot)
0.0cm Separation Distance (EUT to Planar Phantom)



EUT PHOTOGRAPHS
Wireless USB LAN Adapter



EUT PHOTOGRAPHS
with Gateway Solo 1400 Host Laptop PC
Vertical USB Slot



EUT PHOTOGRAPHS
with SONY VAIO PCG-R505 Host Laptop PC
Horizontal USB Slot

