
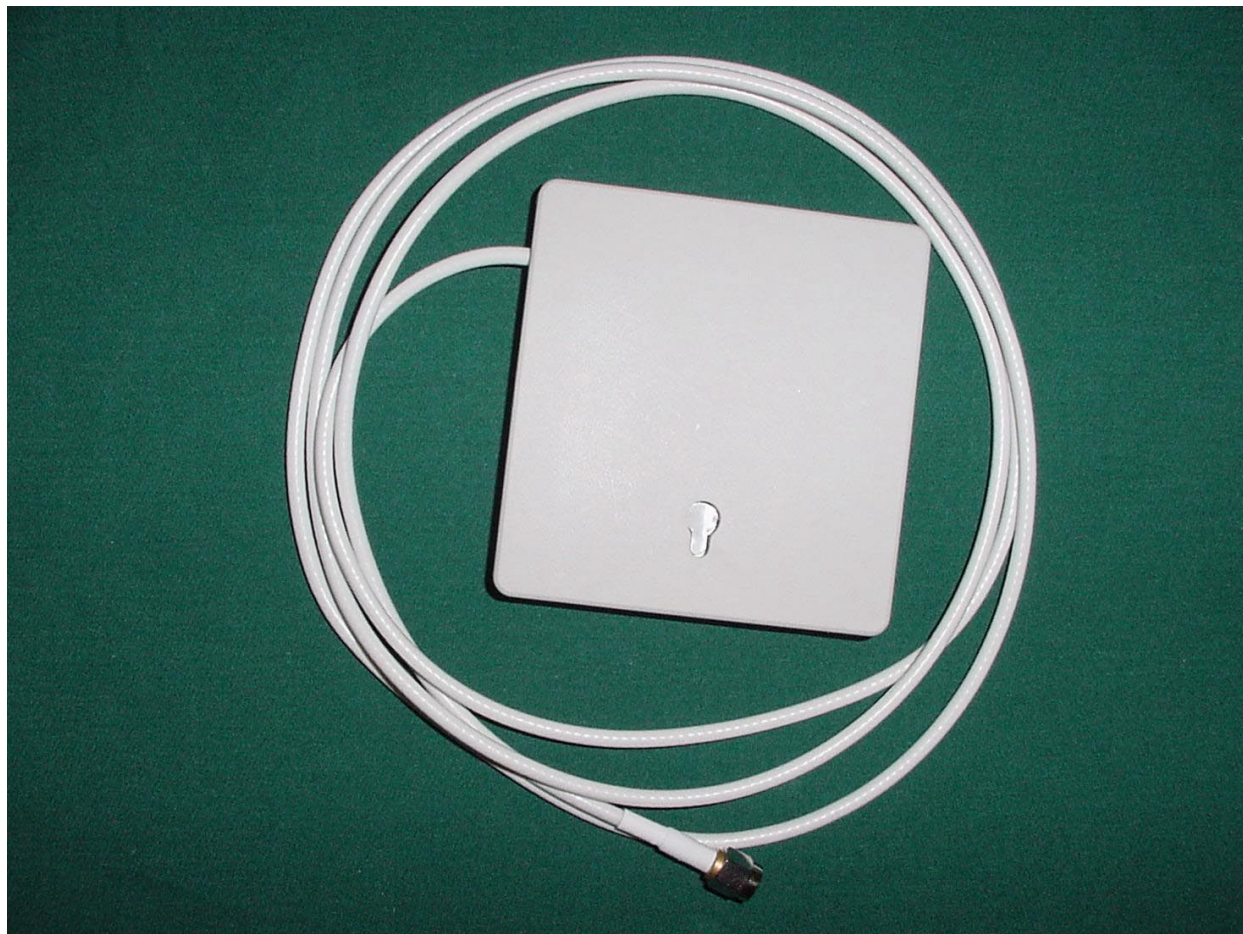
	360 Herndon Parkway, Suite 1400	Report number	2002057
	Herndon, VA 20170	FCC	Part 15.247
	<a href="http://www.rheintech.com">http://www.rheintech.com</a>	Industry Canada	RSS-210
		FCC ID	E2X-SWL2200P
		M/N	SWL-2200P

# APPENDIX N: ANTENNA PHOTOGRAPHS




**PHOTOGRAPH 5: FRONT VIEW OF ANTENNA**

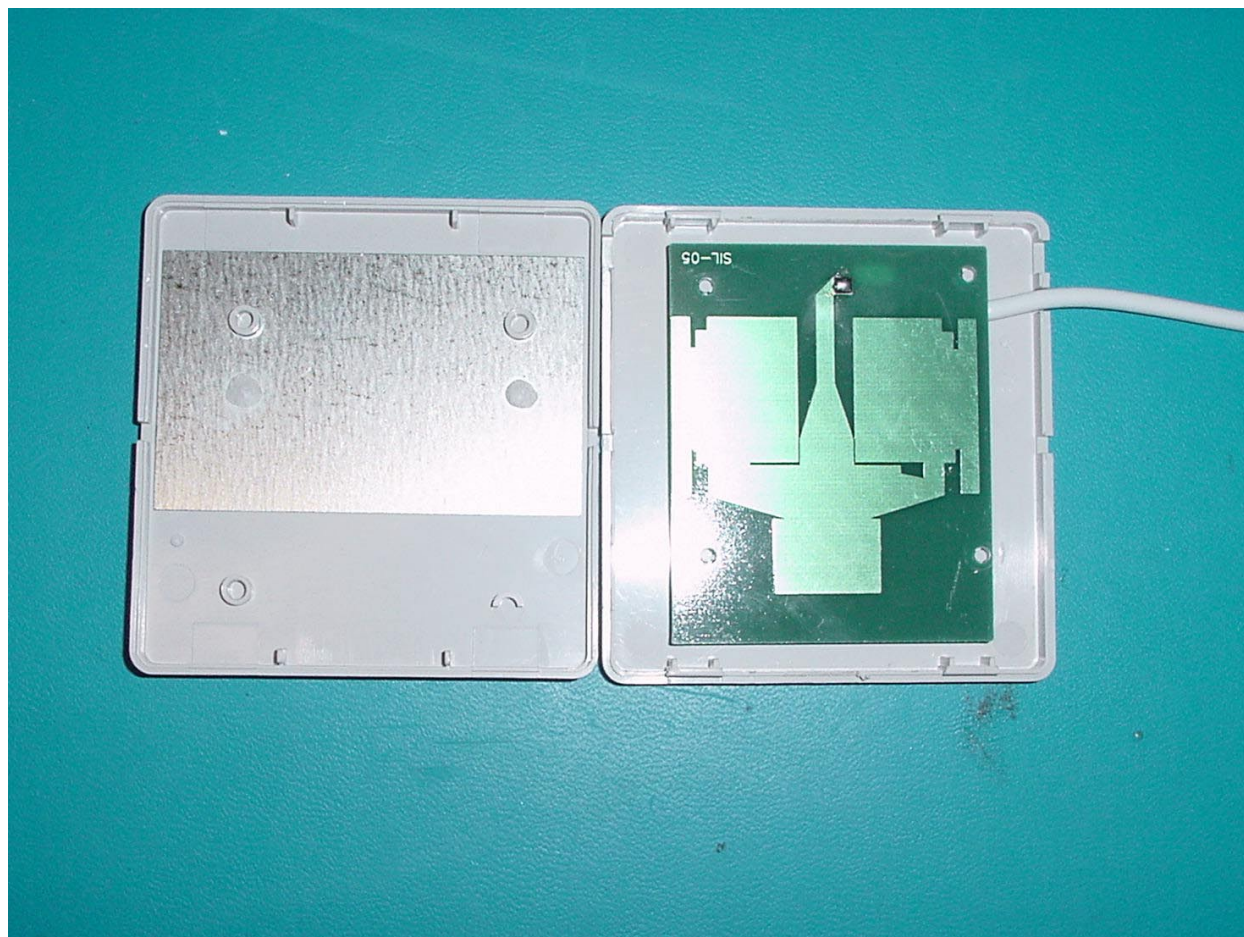
	360 Herndon Parkway, Suite 1400	Report number	2002057
	Herndon, VA 20170	FCC	Part 15.247
	<a href="http://www.rheintech.com">http://www.rheintech.com</a>	Industry Canada	RSS-210
		FCC ID	E2X-SWL2200P
		M/N	SWL-2200P




**PHOTOGRAPH 6: BACK VIEW OF PCB ANTENNA**

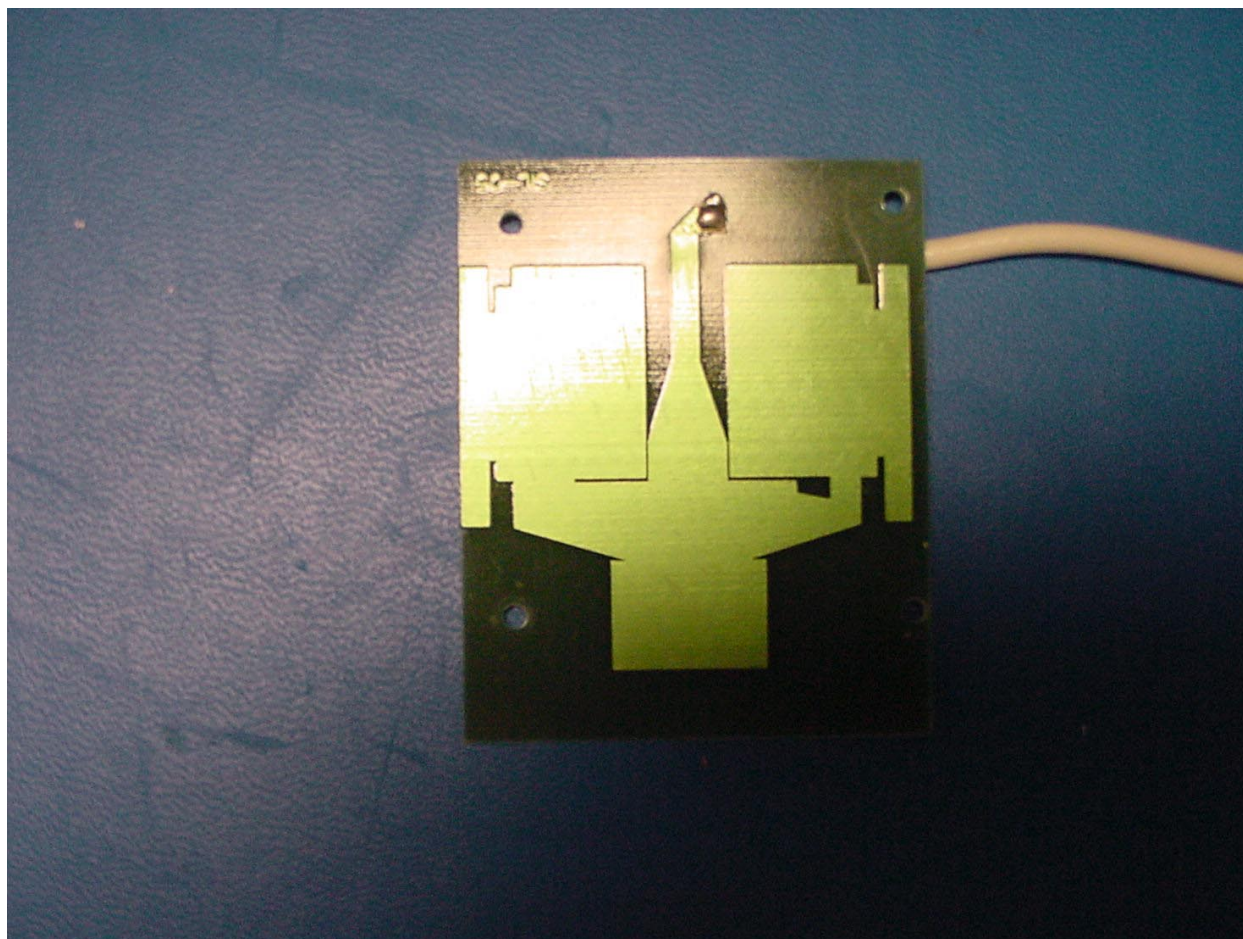


	360 Herndon Parkway, Suite 1400	Report number	2002057
	Herndon, VA 20170	FCC	Part 15.247
	<a href="http://www.rheintech.com">http://www.rheintech.com</a>	Industry Canada	RSS-210
		FCC ID	E2X-SWL2200P
		M/N	SWL-2200P




**PHOTOGRAPH 7: PCB OF PATCH ANTENNA**

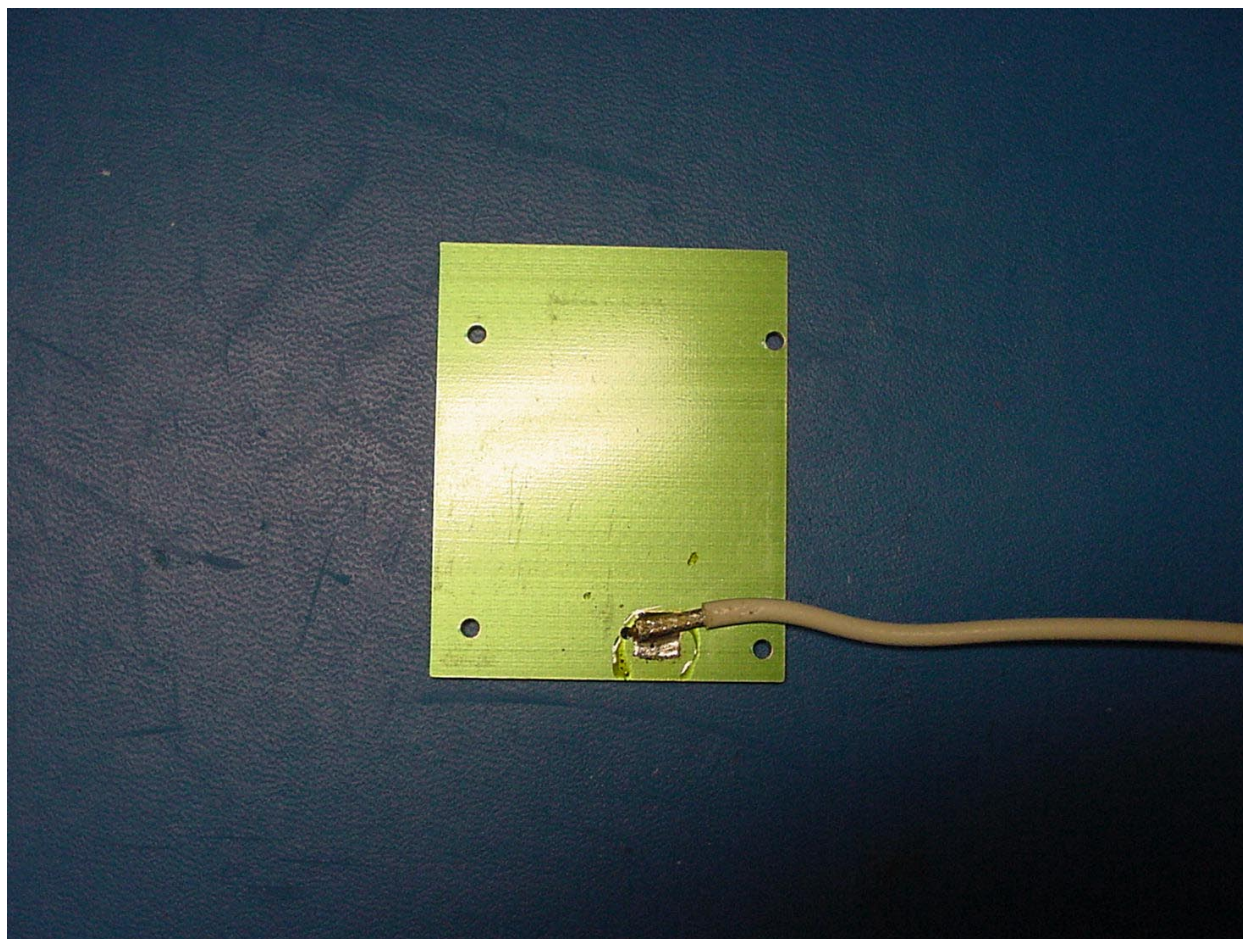
	360 Herndon Parkway, Suite 1400	Report number	2002057
	Herndon, VA 20170	FCC	Part 15.247
	<a href="http://www.rheintech.com">http://www.rheintech.com</a>	Industry Canada	RSS-210
		FCC ID	E2X-SWL2200P
		M/N	SWL-2200P



**PHOTOGRAPH 8: FRONT PCB OF ANTENNA**



	360 Herndon Parkway, Suite 1400	Report number	2002057
	Herndon, VA 20170	FCC	Part 15.247
	<a href="http://www.rheintech.com">http://www.rheintech.com</a>	Industry Canada	RSS-210
		FCC ID	E2X-SWL2200P
		M/N	SWL-2200P



**PHOTOGRAPH 9: BACK PCB OF ANTENNA**