

The Samsung logo, consisting of the word "SAMSUNG" in white, uppercase letters inside a black, horizontally-oriented oval.

User's Manual

Wireless Multimedia Keyboard & Optical Mouse

OMR6000

The Samsung logo, consisting of the word "SAMSUNG" in white, uppercase letters inside a black, horizontally-oriented oval.

► Warranty Period ◀

This product is guaranteed for one year.

- Limited to general or office use only. This period is halved if it is used for business purposes.
- Replacement of consumables that have reached the end of their service life will be subject to a charge.

► A/S Service ◀

<http://www.sem.samsung.com>

www.sem.samsung.com

EW-002

Thank you for purchasing Samsung's wireless keyboard and mouse.

Features

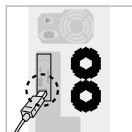
Features	Item	
	Keyboard	Mouse
RF Technology	27MHz, 1Ch	27MHz, 1Ch
Interface	USB	USB
Maximum operating distance	1.5m	1m
Resolution		800 DPI
Wakeup from power-saving	Input of any key	Button click
OS	Win98/Me/2000/XP	Win98/Me/2000/XP

※ Maximum operating distance may differ depending on the situation.

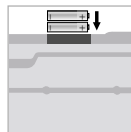
Connect to Computer

(※ **Make sure to install driver after plugging USB receiver to the computer.**)

1. Turn on your computer (Picture 1)
2. Connect the receiver to a USB port (Picture 2)
3. Insert 2 non-rechargeable AA type batteries in keyboard and mouse batteries observing the correct polarities. (Picture 3)



(Picture 1)



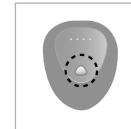
(Picture 2)



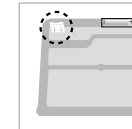
(Picture 3)

4. Click the button on the top of the receiver to connect the keyboard.
5. Click the button on the left upper part on the bottom of keyboard.
6. Click the button on the top of the receiver to connect the mouse.
7. Click the button on the bottom of the mouse.

※ Retry if the mouse or keyboard do not operate.



(Picture 3, 5)



(Picture 4)



(Picture 6)

Install

1. Insert the CD provided with the product into the CD-ROM drive.
2. When the CD is inserted, the installation will run automatically.
3. If the program does not run automatically, click on Setup.exe.
4. Select the installation language and press the Next button.
5. Follow the instructions as they appear on the screen.

※ You can download this program at our website.

Uninstall

1. Select Samsung>OMR6000>Uninstall from the Start menu.
2. Or, select the Add/Remove Program icon from the Control Panel to remove the OMR 6000.

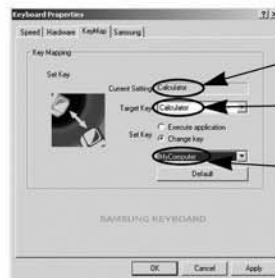
How to Use Key Mapping

1. Key mapping

- Key mapping is the function to convert and set the hot key to the other hot key. For example, you can change the key set for calculator to the key for my computer and mail key through key mapping. In addition, you can designate the execution program to hot key and run it.

2. How to Use 'Key Change'

- 1) Open the keyboard properties of control panel.
- 2) When you select key mapping tap, following window opens.



Displays the function of hot key currently set.

Displays the keyboard key currently selected.

Hot key values are shown in the list so that you can select the hot key you want.

: 3) For example, if you want to change the hot key for calculator to the key for my computer function

① Set the target key to calculator.



② Select My Computer in Drop down box.

③ Press the Apply button at the bottom to change the current setting value to My Computer.

④ Press the calculator key of the keyboard to run My Computer.

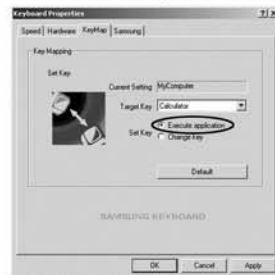


3. How to Use 「Run Program」

: You can run specific program using hot key.

For example, let's run the notepad to the calculator key.

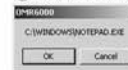
① Select the Run Program.



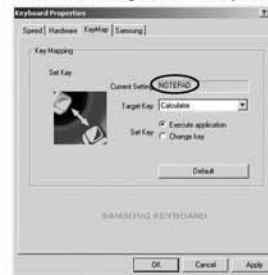
② Find the path of the notepad as shown below and designate the notepad.(You can designate execution file only.)



③ Press OK when confirmation window appears.



④ Current setting value is Notepad.



⑤ After pressing the Apply button, press the calculator key of the keyboard to execute the notepad.

Troubleshooting

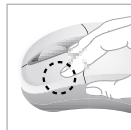
1. Keyboard/mouse does not work.

- Connection of the receiver: check if the receiver is correctly connected to a USB port.
- Batteries exhausted: batteries normally last for over 3 months, depending on usage. Replace them if necessary.

- Initialize ID: click the button on the top of the receiver and then click the button on the bottom of the keyboard/mouse.

2. Mouse does not work.

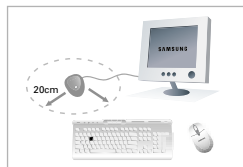
- Wakeup: the power circuit is suspended automatically if you do not use the mouse for 5 minutes or more. Press any button to resume operation. (Picture 7)



(Picture 7)

3. Communication is poor.

- For best performance it is recommended to place the receiver at least 20 cm away from any metal, or electrical devices such as the monitor, computer, or a remote control. Operating distances may differ depending on obstacles and the actual location of the receiver. (Picture 8)



(Picture 8)

4. If the mouse cursor moves unevenly

- Highly reflective surfaces such as glass, or surfaces with a repeated pattern such as wood grain, may affect the operation of the optical mouse sensor. Use the mouse on a different surface.
- It may not operate properly if the voltage of battery is low. Replace battery.

5. The mouse batteries do not last.

- Battery consumption varies greatly depending on the type of surface (mouse pad) on which the wireless optical mouse is used. It is strongly recommended to use a bright (white) surface.

6. Hot key does not work properly.

- Internet key: rerun explorer.
- Office key: may not operate properly at specific program (Ex : Hangul 97 , etc.)
- Media key: update the Windows Media Player.
(Produced based on Win98: Windows media player 7, WinMe/2000/XP: Windows media player 9 series.)

7. Application error occurs while hot key program is used.

- Conflict may occur between applications.
(Rerun keyboard program: Start>Samsung>OMR6000>Keyboard)

8. Cannot install program.

- After connecting USB receiver, insert CD and install the driver.

Keyboard Hot Key Function

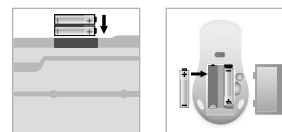
No.	Hot Key Name	Classification	Function
1	Internet	Internet	Run Internet Explorer
2	Mail	Internet	Run Outlook Express
3	Previous page	Internet	Move to previous page
4	Next page	Internet	Move to next page
5	Messenger	Internet	Run MSN
6	My Computer	Internet	Run My Computer
7	Calculator	Internet	Run Calculator
8	Minimize window	Internet	Minimize Windows window

9	Maximize window	Internet	Maximize Windows window
10	Bookmark	Internet	Open/Close Bookmark
11	Volume down	Multimedia	Windows master volume down
12	Volume up	Multimedia	Windows master volume up
13	Volume mute	Multimedia	Windows mater volume mute
14	Media Player	Multimedia	Run Windows Media Player
15	Play/Pause	Multimedia	Play/Pause Windows Media Player
16	Stop	Multimedia	Stop Windows Media Player
17	Previous track	Multimedia	Previous track of Windows Media Player
18	Next track	Multimedia	Next track of Windows Media Player
19	New document	Office	Run New of word processor
20	Open	Office	Run Open of word processor
21	Save	Office	Run Save of word processor
22	Print	Office	Run Print of word processor
23	Copy	Office	Run Copy of word processor
24	Cut	Office	Run Cut of word processor
25	Find	Office	Run Find of word processor
26	Paste	Office	Run Paste of word processor
27	Undo	Office	Run Undo of word processor
28	Rerun	Office	Run Rerun of word processor
29	Close	Office	Close document of word processor
30	Exit	Office	Exit word processor
31	F-Lock	Function	F1~F12 key Function Shift

※ Hot key may not properly work depending on program and version(Outlook Express, Windows Media Player, Word Processor, etc)

Cautions

1. The red LED on the mouse button is tested to the relevant specifications and has been proved to be safe. However, avoid looking at it directly too frequently.
2. If you experience any of the symptoms of CTS (Carpal Tunnel Syndrome) or MD (Musculoskeletal Disorder) after or during computer work, consult your doctor.
3. Insert 2 non-rechargeable AA type batteries in the keyboard/mouse battery compartments.



4. Do not use this product for purpose other than designated.
5. Do not modify this product without approval.
6. If you do not install this program, you may not use some functions of keyboard/mouse.

Cautions

Modifications not expressly approved by the party responsible for compliance could void the user's authority to operate the equipment.

FCC compliance Information

This device complies with part 15 of FCC Rules.

Operation is subject to the following two conditions:

1. This device may not cause harmful interference, and
2. This device must accept any interference received.

Including interference that may cause undesired operation.

Information to User

This equipment has been tested and found to comply with the limits for a Class B digital device, Pursuant to part 15 of the FCC Rules. These limits are designed to provide reasonable protection against harmful interference in a residential installation.

This equipment generates, uses and can radiate radio Frequency energy and, if not installed and used in accordance with the instructions, may cause harmful interference to radio communications.

However, there is no guarantee that interference will not occur in a particular installation. If this equipment does cause harmful interference to radio or television reception, which can be determined by turning the equipment off and on, the user is encouraged to try to correct the interference by one or more of the following measures:

- Reorient or relocate the receiving antenna.
- Increase the separation between the equipment and receiver
- Connect the equipment into an outlet on a circuit different from that to which the receiver is connected.

Consult the dealer or an experienced radio/TV technician for help.