



# Appendix B.1

## NR Band n48(3550-3700)



Unless otherwise agreed in writing, this document is issued by the Company subject to its General Conditions of Service printed overleaf, available on request or accessible at <http://www.sgs.com/en/Terms-and-Conditions.aspx> and, for electronic format documents, subject to Terms and Conditions for Electronic Documents at <http://www.sgs.com/en/Terms-and-Conditions/Terms-e-Documents.aspx>. Attention is drawn to the limitation of liability, indemnification and jurisdiction issues defined therein. Any holder of this document is advised that information contained hereon reflects the Company's findings at the time of its intervention only and within the limits of Client's instructions, if any. The Company's sole responsibility is to its Client and this document does not exonerate parties to a transaction from exercising all their rights and obligations under the transaction documents. This document cannot be reproduced except in full, without prior written approval of the Company. Any unauthorized alteration, forgery or falsification of the content or appearance of this document is unlawful and offenders may be prosecuted to the fullest extent of the law. Unless otherwise stated the results shown in this test report refer only to the sample(s) tested and such sample(s) are retained for 30 days only.  
**Attention: To check the authenticity of testing / inspection report & certificate, please contact us at telephone: (86-755) 8307 1443, or email: CN.Doccheck@sgs.com**

## Effective (Isotropic) Radiated Power Output Data for SA

### Test Result

Band	SCS	Bandwidth	Modulation	Channel	RB Config	Power (dBm)	EIRP (dBm)	Limit	Verdict
N48	30	10	DFT-PI2BPSK	L	Inner_1RB_Left	21.28	22.28	23	PASS
N48	30	10	DFT-PI2BPSK	L	Inner_1RB_Right	21.11	22.11	23	PASS
N48	30	10	DFT-PI2BPSK	L	Outer_Full	20.84	21.84	23	PASS
N48	30	10	DFT-QPSK	L	Inner_1RB_Left	21.33	22.33	23	PASS
N48	30	10	DFT-QPSK	L	Inner_1RB_Right	21.17	22.17	23	PASS
N48	30	10	DFT-QPSK	L	Outer_Full	20.32	21.32	23	PASS
N48	30	10	DFT-16QAM	L	Inner_1RB_Left	20.34	21.34	23	PASS
N48	30	10	DFT-16QAM	L	Inner_1RB_Right	20.21	21.21	23	PASS
N48	30	10	DFT-16QAM	L	Outer_Full	19.30	20.30	23	PASS
N48	30	10	DFT-64QAM	L	Inner_1RB_Left	18.70	19.70	23	PASS
N48	30	10	DFT-64QAM	L	Inner_1RB_Right	18.53	19.53	23	PASS
N48	30	10	DFT-64QAM	L	Outer_Full	18.83	19.83	23	PASS
N48	30	10	DFT-256QAM	L	Inner_1RB_Left	16.61	17.61	23	PASS
N48	30	10	DFT-256QAM	L	Inner_1RB_Right	16.37	17.37	23	PASS
N48	30	10	DFT-256QAM	L	Outer_Full	16.73	17.73	23	PASS
N48	30	10	DFT-PI2BPSK	M	Inner_1RB_Left	21.27	22.27	23	PASS
N48	30	10	DFT-PI2BPSK	M	Inner_1RB_Right	21.20	22.20	23	PASS
N48	30	10	DFT-PI2BPSK	M	Outer_Full	20.77	21.77	23	PASS
N48	30	10	DFT-QPSK	M	Inner_1RB_Left	21.21	22.21	23	PASS
N48	30	10	DFT-QPSK	M	Inner_1RB_Right	21.07	22.07	23	PASS
N48	30	10	DFT-QPSK	M	Outer_Full	20.26	21.26	23	PASS
N48	30	10	DFT-16QAM	M	Inner_1RB_Left	20.21	21.21	23	PASS
N48	30	10	DFT-16QAM	M	Inner_1RB_Right	20.10	21.10	23	PASS
N48	30	10	DFT-16QAM	M	Outer_Full	19.21	20.21	23	PASS
N48	30	10	DFT-64QAM	M	Inner_1RB_Left	18.84	19.84	23	PASS
N48	30	10	DFT-64QAM	M	Inner_1RB_Right	18.69	19.69	23	PASS
N48	30	10	DFT-64QAM	M	Outer_Full	18.79	19.79	23	PASS
N48	30	10	DFT-256QAM	M	Inner_1RB_Left	16.42	17.42	23	PASS
N48	30	10	DFT-256QAM	M	Inner_1RB_Right	16.33	17.33	23	PASS
N48	30	10	DFT-256QAM	M	Outer_Full	16.66	17.66	23	PASS
N48	30	10	DFT-PI2BPSK	H	Inner_1RB_Left	21.01	22.01	23	PASS
N48	30	10	DFT-PI2BPSK	H	Inner_1RB_Right	21.08	22.08	23	PASS
N48	30	10	DFT-PI2BPSK	H	Outer_Full	20.62	21.62	23	PASS



Unless otherwise agreed in writing, this document is issued by the Company subject to its General Conditions of Service printed overleaf, available on request or accessible at <http://www.sgs.com/en/Terms-and-Conditions.aspx> and, for electronic format documents, subject to Terms and Conditions for Electronic Documents at <http://www.sgs.com/en/Terms-and-Conditions/Terms-e-Documents.aspx>. Attention is drawn to the limitation of liability, indemnification and jurisdiction issues defined therein. Any holder of this document is advised that information contained hereon reflects the Company's findings at the time of its intervention only and within the limits of Client's instructions, if any. The Company's sole responsibility is to its Client and this document does not exonerate parties to a transaction from exercising all their rights and obligations under the transaction documents. This document cannot be reproduced except in full, without prior written approval of the Company. Any unauthorized alteration, forgery or falsification of the content or appearance of this document is unlawful and offenders may be prosecuted to the fullest extent of the law. Unless otherwise stated the results shown in this test report refer only to the sample(s) tested and such sample(s) are retained for 30 days only.

Attention: To check the authenticity of testing/inspection report & certificate, please contact us at telephone: (86-755) 8307 1443, or email: [CN.Doccheck@sgs.com](mailto:CN.Doccheck@sgs.com)  
 No.1 Workshop, M-10, Middle Section, Science & Technology Park, Shenzhen, China 518057 t (86-755) 26012053 f (86-755) 26710594 www.sgs.com.cn  
 中国·深圳·科技园中区M-10栋一号厂房 邮编: 518057 t (86-755) 26012053 f (86-755) 26710594 sgs.china@sgs.com



N48	30	10	DFT-QPSK	H	Inner_1RB_Left	21.09	22.09	23	PASS
N48	30	10	DFT-QPSK	H	Inner_1RB_Right	21.04	22.04	23	PASS
N48	30	10	DFT-QPSK	H	Outer_Full	20.13	21.13	23	PASS
N48	30	10	DFT-16QAM	H	Inner_1RB_Left	20.10	21.10	23	PASS
N48	30	10	DFT-16QAM	H	Inner_1RB_Right	20.09	21.09	23	PASS
N48	30	10	DFT-16QAM	H	Outer_Full	19.11	20.11	23	PASS
N48	30	10	DFT-64QAM	H	Inner_1RB_Left	18.53	19.53	23	PASS
N48	30	10	DFT-64QAM	H	Inner_1RB_Right	18.63	19.63	23	PASS
N48	30	10	DFT-64QAM	H	Outer_Full	18.61	19.61	23	PASS
N48	30	10	DFT-256QAM	H	Inner_1RB_Left	16.10	17.10	23	PASS
N48	30	10	DFT-256QAM	H	Inner_1RB_Right	16.25	17.25	23	PASS
N48	30	10	DFT-256QAM	H	Outer_Full	16.48	17.48	23	PASS
N48	30	15	DFT-PI2BPSK	L	Inner_1RB_Left	21.31	22.31	23	PASS
N48	30	15	DFT-PI2BPSK	L	Inner_1RB_Right	21.18	22.18	23	PASS
N48	30	15	DFT-PI2BPSK	L	Outer_Full	20.79	21.79	23	PASS
N48	30	15	DFT-QPSK	L	Inner_1RB_Left	21.26	22.26	23	PASS
N48	30	15	DFT-QPSK	L	Inner_1RB_Right	21.12	22.12	23	PASS
N48	30	15	DFT-QPSK	L	Outer_Full	20.26	21.26	23	PASS
N48	30	15	DFT-16QAM	L	Inner_1RB_Left	20.36	21.36	23	PASS
N48	30	15	DFT-16QAM	L	Inner_1RB_Right	20.18	21.18	23	PASS
N48	30	15	DFT-16QAM	L	Outer_Full	19.30	20.30	23	PASS
N48	30	15	DFT-64QAM	L	Inner_1RB_Left	18.55	19.55	23	PASS
N48	30	15	DFT-64QAM	L	Inner_1RB_Right	18.53	19.53	23	PASS
N48	30	15	DFT-64QAM	L	Outer_Full	18.73	19.73	23	PASS
N48	30	15	DFT-256QAM	L	Inner_1RB_Left	16.49	17.49	23	PASS
N48	30	15	DFT-256QAM	L	Inner_1RB_Right	16.30	17.30	23	PASS
N48	30	15	DFT-256QAM	L	Outer_Full	16.66	17.66	23	PASS
N48	30	15	DFT-PI2BPSK	M	Inner_1RB_Left	21.29	22.29	23	PASS
N48	30	15	DFT-PI2BPSK	M	Inner_1RB_Right	21.17	22.17	23	PASS
N48	30	15	DFT-PI2BPSK	M	Outer_Full	20.72	21.72	23	PASS
N48	30	15	DFT-QPSK	M	Inner_1RB_Left	21.26	22.26	23	PASS
N48	30	15	DFT-QPSK	M	Inner_1RB_Right	21.13	22.13	23	PASS
N48	30	15	DFT-QPSK	M	Outer_Full	20.18	21.18	23	PASS
N48	30	15	DFT-16QAM	M	Inner_1RB_Left	20.25	21.25	23	PASS
N48	30	15	DFT-16QAM	M	Inner_1RB_Right	20.17	21.17	23	PASS
N48	30	15	DFT-16QAM	M	Outer_Full	19.26	20.26	23	PASS
N48	30	15	DFT-64QAM	M	Inner_1RB_Left	18.54	19.54	23	PASS
N48	30	15	DFT-64QAM	M	Inner_1RB_Right	18.49	19.49	23	PASS
N48	30	15	DFT-64QAM	M	Outer_Full	18.66	19.66	23	PASS



Unless otherwise agreed in writing, this document is issued by the Company subject to its General Conditions of Service printed overleaf, available on request or accessible at <http://www.sgs.com/en/Terms-and-Conditions.aspx> and, for electronic format documents, subject to Terms and Conditions for Electronic Documents at <http://www.sgs.com/en/Terms-and-Conditions/Terms-e-Documents.aspx>. Attention is drawn to the limitation of liability, indemnification and jurisdiction issues defined therein. Any holder of this document is advised that information contained hereon reflects the Company's findings at the time of its intervention only and within the limits of Client's instructions, if any. The Company's sole responsibility is to its Client and this document does not exonerate parties to a transaction from exercising all their rights and obligations under the transaction documents. This document cannot be reproduced except in full, without prior written approval of the Company. Any unauthorized alteration, forgery or falsification of the content or appearance of this document is unlawful and offenders may be prosecuted to the fullest extent of the law. Unless otherwise stated the results shown in this test report refer only to the sample(s) tested and such sample(s) are retained for 30 days only.  
**Attention: To check the authenticity of testing/inspection report & certificate, please contact us at telephone: (86-755) 8307 1443, or email: CN.Doccheck@sgs.com**



N48	30	15	DFT-256QAM	M	Inner_1RB_Left	16.37	17.37	23	PASS
N48	30	15	DFT-256QAM	M	Inner_1RB_Right	16.33	17.33	23	PASS
N48	30	15	DFT-256QAM	M	Outer_Full	16.58	17.58	23	PASS
N48	30	15	DFT-PI2BPSK	H	Inner_1RB_Left	20.93	21.93	23	PASS
N48	30	15	DFT-PI2BPSK	H	Inner_1RB_Right	20.98	21.98	23	PASS
N48	30	15	DFT-PI2BPSK	H	Outer_Full	20.57	21.57	23	PASS
N48	30	15	DFT-QPSK	H	Inner_1RB_Left	20.96	21.96	23	PASS
N48	30	15	DFT-QPSK	H	Inner_1RB_Right	20.98	21.98	23	PASS
N48	30	15	DFT-QPSK	H	Outer_Full	20.05	21.05	23	PASS
N48	30	15	DFT-16QAM	H	Inner_1RB_Left	20.00	21.00	23	PASS
N48	30	15	DFT-16QAM	H	Inner_1RB_Right	19.98	20.98	23	PASS
N48	30	15	DFT-16QAM	H	Outer_Full	19.10	20.10	23	PASS
N48	30	15	DFT-64QAM	H	Inner_1RB_Left	18.57	19.57	23	PASS
N48	30	15	DFT-64QAM	H	Inner_1RB_Right	18.55	19.55	23	PASS
N48	30	15	DFT-64QAM	H	Outer_Full	18.51	19.51	23	PASS
N48	30	15	DFT-256QAM	H	Inner_1RB_Left	16.23	17.23	23	PASS
N48	30	15	DFT-256QAM	H	Inner_1RB_Right	16.43	17.43	23	PASS
N48	30	15	DFT-256QAM	H	Outer_Full	16.48	17.48	23	PASS
N48	30	20	DFT-PI2BPSK	L	Inner_1RB_Left	21.18	22.18	23	PASS
N48	30	20	DFT-PI2BPSK	L	Inner_1RB_Right	21.05	22.05	23	PASS
N48	30	20	DFT-PI2BPSK	L	Outer_Full	20.76	21.76	23	PASS
N48	30	20	DFT-QPSK	L	Inner_1RB_Left	21.19	22.19	23	PASS
N48	30	20	DFT-QPSK	L	Inner_1RB_Right	21.06	22.06	23	PASS
N48	30	20	DFT-QPSK	L	Outer_Full	20.22	21.22	23	PASS
N48	30	20	DFT-16QAM	L	Inner_1RB_Left	20.25	21.25	23	PASS
N48	30	20	DFT-16QAM	L	Inner_1RB_Right	20.13	21.13	23	PASS
N48	30	20	DFT-16QAM	L	Outer_Full	19.23	20.23	23	PASS
N48	30	20	DFT-64QAM	L	Inner_1RB_Left	18.83	19.83	23	PASS
N48	30	20	DFT-64QAM	L	Inner_1RB_Right	18.61	19.61	23	PASS
N48	30	20	DFT-64QAM	L	Outer_Full	18.73	19.73	23	PASS
N48	30	20	DFT-256QAM	L	Inner_1RB_Left	16.62	17.62	23	PASS
N48	30	20	DFT-256QAM	L	Inner_1RB_Right	16.49	17.49	23	PASS
N48	30	20	DFT-256QAM	L	Outer_Full	16.63	17.63	23	PASS
N48	30	20	DFT-PI2BPSK	M	Inner_1RB_Left	21.13	22.13	23	PASS
N48	30	20	DFT-PI2BPSK	M	Inner_1RB_Right	20.98	21.98	23	PASS
N48	30	20	DFT-PI2BPSK	M	Outer_Full	20.71	21.71	23	PASS
N48	30	20	DFT-QPSK	M	Inner_1RB_Left	21.13	22.13	23	PASS
N48	30	20	DFT-QPSK	M	Inner_1RB_Right	20.99	21.99	23	PASS
N48	30	20	DFT-QPSK	M	Outer_Full	20.21	21.21	23	PASS



Unless otherwise agreed in writing, this document is issued by the Company subject to its General Conditions of Service printed overleaf, available on request or accessible at <http://www.sgs.com/en/Terms-and-Conditions.aspx> and, for electronic format documents, subject to Terms and Conditions for Electronic Documents at <http://www.sgs.com/en/Terms-and-Conditions/Terms-e-Documents.aspx>. Attention is drawn to the limitation of liability, indemnification and jurisdiction issues defined therein. Any holder of this document is advised that information contained hereon reflects the Company's findings at the time of its intervention only and within the limits of Client's instructions, if any. The Company's sole responsibility is to its Client and this document does not exonerate parties to a transaction from exercising all their rights and obligations under the transaction documents. This document cannot be reproduced except in full, without prior written approval of the Company. Any unauthorized alteration, forgery or falsification of the content or appearance of this document is unlawful and offenders may be prosecuted to the fullest extent of the law. Unless otherwise stated the results shown in this test report refer only to the sample(s) tested and such sample(s) are retained for 30 days only.

Attention: To check the authenticity of testing/inspection report & certificate, please contact us at telephone: (86-755) 8307 1443, or email: [CN.Doccheck@sgs.com](mailto:CN.Doccheck@sgs.com)  
 No. 1 Workshop, M-10, Middle Section, Science & Technology Park, Shenzhen, China 518057 t (86-755) 26012053 f (86-755) 26710594 www.sgs.com.cn  
 中国·深圳·科技园中区M-10栋一号厂房 邮编: 518057 t (86-755) 26012053 f (86-755) 26710594 sgs.china@sgs.com



N48	30	20	DFT-16QAM	M	Inner_1RB_Left	20.20	21.20	23	PASS
N48	30	20	DFT-16QAM	M	Inner_1RB_Right	19.95	20.95	23	PASS
N48	30	20	DFT-16QAM	M	Outer_Full	19.20	20.20	23	PASS
N48	30	20	DFT-64QAM	M	Inner_1RB_Left	18.67	19.67	23	PASS
N48	30	20	DFT-64QAM	M	Inner_1RB_Right	18.55	19.55	23	PASS
N48	30	20	DFT-64QAM	M	Outer_Full	18.65	19.65	23	PASS
N48	30	20	DFT-256QAM	M	Inner_1RB_Left	16.57	17.57	23	PASS
N48	30	20	DFT-256QAM	M	Inner_1RB_Right	16.45	17.45	23	PASS
N48	30	20	DFT-256QAM	M	Outer_Full	16.56	17.56	23	PASS
N48	30	20	DFT-PI2BPSK	H	Inner_1RB_Left	20.90	21.90	23	PASS
N48	30	20	DFT-PI2BPSK	H	Inner_1RB_Right	20.96	21.96	23	PASS
N48	30	20	DFT-PI2BPSK	H	Outer_Full	20.59	21.59	23	PASS
N48	30	20	DFT-QPSK	H	Inner_1RB_Left	20.86	21.86	23	PASS
N48	30	20	DFT-QPSK	H	Inner_1RB_Right	20.90	21.90	23	PASS
N48	30	20	DFT-QPSK	H	Outer_Full	20.02	21.02	23	PASS
N48	30	20	DFT-16QAM	H	Inner_1RB_Left	19.90	20.90	23	PASS
N48	30	20	DFT-16QAM	H	Inner_1RB_Right	19.97	20.97	23	PASS
N48	30	20	DFT-16QAM	H	Outer_Full	19.04	20.04	23	PASS
N48	30	20	DFT-64QAM	H	Inner_1RB_Left	18.53	19.53	23	PASS
N48	30	20	DFT-64QAM	H	Inner_1RB_Right	18.53	19.53	23	PASS
N48	30	20	DFT-64QAM	H	Outer_Full	18.53	19.53	23	PASS
N48	30	20	DFT-256QAM	H	Inner_1RB_Left	16.29	17.29	23	PASS
N48	30	20	DFT-256QAM	H	Inner_1RB_Right	16.33	17.33	23	PASS
N48	30	20	DFT-256QAM	H	Outer_Full	16.42	17.42	23	PASS
N48	30	30	DFT-PI2BPSK	L	Inner_1RB_Left	21.12	22.12	23	PASS
N48	30	30	DFT-PI2BPSK	L	Inner_1RB_Right	21.06	22.06	23	PASS
N48	30	30	DFT-PI2BPSK	L	Outer_Full	20.76	21.76	23	PASS
N48	30	30	DFT-QPSK	L	Inner_1RB_Left	21.14	22.14	23	PASS
N48	30	30	DFT-QPSK	L	Inner_1RB_Right	21.07	22.07	23	PASS
N48	30	30	DFT-QPSK	L	Outer_Full	20.25	21.25	23	PASS
N48	30	30	DFT-16QAM	L	Inner_1RB_Left	20.17	21.17	23	PASS
N48	30	30	DFT-16QAM	L	Inner_1RB_Right	20.07	21.07	23	PASS
N48	30	30	DFT-16QAM	L	Outer_Full	19.28	20.28	23	PASS
N48	30	30	DFT-64QAM	L	Inner_1RB_Left	18.55	19.55	23	PASS
N48	30	30	DFT-64QAM	L	Inner_1RB_Right	18.52	19.52	23	PASS
N48	30	30	DFT-64QAM	L	Outer_Full	18.74	19.74	23	PASS
N48	30	30	DFT-256QAM	L	Inner_1RB_Left	16.55	17.55	23	PASS
N48	30	30	DFT-256QAM	L	Inner_1RB_Right	16.49	17.49	23	PASS
N48	30	30	DFT-256QAM	L	Outer_Full	16.66	17.66	23	PASS



Unless otherwise agreed in writing, this document is issued by the Company subject to its General Conditions of Service printed overleaf, available on request or accessible at <http://www.sgs.com/en/Terms-and-Conditions.aspx> and, for electronic format documents, subject to Terms and Conditions for Electronic Documents at <http://www.sgs.com/en/Terms-and-Conditions/Terms-e-Documents.aspx>. Attention is drawn to the limitation of liability, indemnification and jurisdiction issues defined therein. Any holder of this document is advised that information contained hereon reflects the Company's findings at the time of its intervention only and within the limits of Client's instructions, if any. The Company's sole responsibility is to its Client and this document does not exonerate parties to a transaction from exercising all their rights and obligations under the transaction documents. This document cannot be reproduced except in full, without prior written approval of the Company. Any unauthorized alteration, forgery or falsification of the content or appearance of this document is unlawful and offenders may be prosecuted to the fullest extent of the law. Unless otherwise stated the results shown in this test report refer only to the sample(s) tested and such sample(s) are retained for 30 days only.

Attention: To check the authenticity of testing/inspection report & certificate, please contact us at telephone: (86-755) 8307 1443, or email: [CN.Doccheck@sgs.com](mailto:CN.Doccheck@sgs.com)  
 No. 1 Workshop, M-10, Middle Section, Science & Technology Park, Shenzhen, China 518057 t (86-755) 26012053 f (86-755) 26710594 www.sgs.com.cn  
 中国·深圳·科技园中区M-10栋一号厂房 邮编: 518057 t (86-755) 26012053 f (86-755) 26710594 sgs.china@sgs.com



N48	30	30	DFT-PI2BPSK	M	Inner_1RB_Left	21.12	22.12	23	PASS
N48	30	30	DFT-PI2BPSK	M	Inner_1RB_Right	21.05	22.05	23	PASS
N48	30	30	DFT-PI2BPSK	M	Outer_Full	20.71	21.71	23	PASS
N48	30	30	DFT-QPSK	M	Inner_1RB_Left	21.13	22.13	23	PASS
N48	30	30	DFT-QPSK	M	Inner_1RB_Right	21.11	22.11	23	PASS
N48	30	30	DFT-QPSK	M	Outer_Full	20.18	21.18	23	PASS
N48	30	30	DFT-16QAM	M	Inner_1RB_Left	19.97	20.97	23	PASS
N48	30	30	DFT-16QAM	M	Inner_1RB_Right	19.87	20.87	23	PASS
N48	30	30	DFT-16QAM	M	Outer_Full	19.21	20.21	23	PASS
N48	30	30	DFT-64QAM	M	Inner_1RB_Left	18.93	19.93	23	PASS
N48	30	30	DFT-64QAM	M	Inner_1RB_Right	18.80	19.80	23	PASS
N48	30	30	DFT-64QAM	M	Outer_Full	18.69	19.69	23	PASS
N48	30	30	DFT-256QAM	M	Inner_1RB_Left	16.39	17.39	23	PASS
N48	30	30	DFT-256QAM	M	Inner_1RB_Right	16.25	17.25	23	PASS
N48	30	30	DFT-256QAM	M	Outer_Full	16.55	17.55	23	PASS
N48	30	30	DFT-PI2BPSK	H	Inner_1RB_Left	20.78	21.78	23	PASS
N48	30	30	DFT-PI2BPSK	H	Inner_1RB_Right	20.94	21.94	23	PASS
N48	30	30	DFT-PI2BPSK	H	Outer_Full	20.52	21.52	23	PASS
N48	30	30	DFT-QPSK	H	Inner_1RB_Left	20.79	21.79	23	PASS
N48	30	30	DFT-QPSK	H	Inner_1RB_Right	20.95	21.95	23	PASS
N48	30	30	DFT-QPSK	H	Outer_Full	20.03	21.03	23	PASS
N48	30	30	DFT-16QAM	H	Inner_1RB_Left	19.64	20.64	23	PASS
N48	30	30	DFT-16QAM	H	Inner_1RB_Right	19.83	20.83	23	PASS
N48	30	30	DFT-16QAM	H	Outer_Full	19.06	20.06	23	PASS
N48	30	30	DFT-64QAM	H	Inner_1RB_Left	18.52	19.52	23	PASS
N48	30	30	DFT-64QAM	H	Inner_1RB_Right	18.73	19.73	23	PASS
N48	30	30	DFT-64QAM	H	Outer_Full	18.56	19.56	23	PASS
N48	30	30	DFT-256QAM	H	Inner_1RB_Left	16.06	17.06	23	PASS
N48	30	30	DFT-256QAM	H	Inner_1RB_Right	16.30	17.30	23	PASS
N48	30	30	DFT-256QAM	H	Outer_Full	16.39	17.39	23	PASS
N48	30	40	DFT-PI2BPSK	L	Inner_1RB_Left	20.90	21.90	23	PASS
N48	30	40	DFT-PI2BPSK	L	Inner_1RB_Right	20.92	21.92	23	PASS
N48	30	40	DFT-PI2BPSK	L	Outer_Full	20.73	21.73	23	PASS
N48	30	40	DFT-QPSK	L	Inner_1RB_Left	20.93	21.93	23	PASS
N48	30	40	DFT-QPSK	L	Inner_1RB_Right	20.96	21.96	23	PASS
N48	30	40	DFT-QPSK	L	Outer_Full	20.22	21.22	23	PASS
N48	30	40	DFT-16QAM	L	Inner_1RB_Left	19.95	20.95	23	PASS
N48	30	40	DFT-16QAM	L	Inner_1RB_Right	19.95	20.95	23	PASS
N48	30	40	DFT-16QAM	L	Outer_Full	19.19	20.19	23	PASS



Unless otherwise agreed in writing, this document is issued by the Company subject to its General Conditions of Service printed overleaf, available on request or accessible at <http://www.sgs.com/en/Terms-and-Conditions.aspx> and, for electronic format documents, subject to Terms and Conditions for Electronic Documents at <http://www.sgs.com/en/Terms-and-Conditions/Terms-e-Documents.aspx>. Attention is drawn to the limitation of liability, indemnification and jurisdiction issues defined therein. Any holder of this document is advised that information contained hereon reflects the Company's findings at the time of its intervention only and within the limits of Client's instructions, if any. The Company's sole responsibility is to its Client and this document does not exonerate parties to a transaction from exercising all their rights and obligations under the transaction documents. This document cannot be reproduced except in full, without prior written approval of the Company. Any unauthorized alteration, forgery or falsification of the content or appearance of this document is unlawful and offenders may be prosecuted to the fullest extent of the law. Unless otherwise stated the results shown in this test report refer only to the sample(s) tested and such sample(s) are retained for 30 days only.  
**Attention: To check the authenticity of testing/inspection report & certificate, please contact us at telephone: (86-755) 8307 1443, or email: CN.Doccheck@sgs.com**



N48	30	40	DFT-64QAM	L	Inner_1RB_Left	18.68	19.68	23	PASS
N48	30	40	DFT-64QAM	L	Inner_1RB_Right	18.67	19.67	23	PASS
N48	30	40	DFT-64QAM	L	Outer_Full	18.65	19.65	23	PASS
N48	30	40	DFT-256QAM	L	Inner_1RB_Left	16.25	17.25	23	PASS
N48	30	40	DFT-256QAM	L	Inner_1RB_Right	16.26	17.26	23	PASS
N48	30	40	DFT-256QAM	L	Outer_Full	16.64	17.64	23	PASS
N48	30	40	DFT-PI2BPSK	M	Inner_1RB_Left	20.39	21.39	23	PASS
N48	30	40	DFT-PI2BPSK	M	Inner_1RB_Right	20.54	21.54	23	PASS
N48	30	40	DFT-PI2BPSK	M	Outer_Full	20.16	21.16	23	PASS
N48	30	40	DFT-QPSK	M	Inner_1RB_Left	20.94	21.94	23	PASS
N48	30	40	DFT-QPSK	M	Inner_1RB_Right	20.81	21.81	23	PASS
N48	30	40	DFT-QPSK	M	Outer_Full	20.09	21.09	23	PASS
N48	30	40	DFT-16QAM	M	Inner_1RB_Left	20.19	21.19	23	PASS
N48	30	40	DFT-16QAM	M	Inner_1RB_Right	19.99	20.99	23	PASS
N48	30	40	DFT-16QAM	M	Outer_Full	19.07	20.07	23	PASS
N48	30	40	DFT-64QAM	M	Inner_1RB_Left	18.73	19.73	23	PASS
N48	30	40	DFT-64QAM	M	Inner_1RB_Right	18.43	19.43	23	PASS
N48	30	40	DFT-64QAM	M	Outer_Full	18.55	19.55	23	PASS
N48	30	40	DFT-256QAM	M	Inner_1RB_Left	16.44	17.44	23	PASS
N48	30	40	DFT-256QAM	M	Inner_1RB_Right	16.35	17.35	23	PASS
N48	30	40	DFT-256QAM	M	Outer_Full	16.54	17.54	23	PASS
N48	30	40	DFT-PI2BPSK	H	Inner_1RB_Left	20.58	21.58	23	PASS
N48	30	40	DFT-PI2BPSK	H	Inner_1RB_Right	20.75	21.75	23	PASS
N48	30	40	DFT-PI2BPSK	H	Outer_Full	20.40	21.40	23	PASS
N48	30	40	DFT-QPSK	H	Inner_1RB_Left	20.64	21.64	23	PASS
N48	30	40	DFT-QPSK	H	Inner_1RB_Right	20.77	21.77	23	PASS
N48	30	40	DFT-QPSK	H	Outer_Full	19.92	20.92	23	PASS
N48	30	40	DFT-16QAM	H	Inner_1RB_Left	19.84	20.84	23	PASS
N48	30	40	DFT-16QAM	H	Inner_1RB_Right	20.01	21.01	23	PASS
N48	30	40	DFT-16QAM	H	Outer_Full	18.92	19.92	23	PASS
N48	30	40	DFT-64QAM	H	Inner_1RB_Left	18.29	19.29	23	PASS
N48	30	40	DFT-64QAM	H	Inner_1RB_Right	18.41	19.41	23	PASS
N48	30	40	DFT-64QAM	H	Outer_Full	18.41	19.41	23	PASS
N48	30	40	DFT-256QAM	H	Inner_1RB_Left	16.13	17.13	23	PASS
N48	30	40	DFT-256QAM	H	Inner_1RB_Right	16.27	17.27	23	PASS
N48	30	40	DFT-256QAM	H	Outer_Full	16.31	17.31	23	PASS



Unless otherwise agreed in writing, this document is issued by the Company subject to its General Conditions of Service printed overleaf, available on request or accessible at <http://www.sgs.com/en/Terms-and-Conditions.aspx> and, for electronic format documents, subject to Terms and Conditions for Electronic Documents at <http://www.sgs.com/en/Terms-and-Conditions/Terms-e-Document.aspx>. Attention is drawn to the limitation of liability, indemnification and jurisdiction issues defined therein. Any holder of this document is advised that information contained hereon reflects the Company's findings at the time of its intervention only and within the limits of Client's instructions, if any. The Company's sole responsibility is to its Client and this document does not exonerate parties to a transaction from exercising all their rights and obligations under the transaction documents. This document cannot be reproduced except in full, without prior written approval of the Company. Any unauthorized alteration, forgery or falsification of the content or appearance of this document is unlawful and offenders may be prosecuted to the fullest extent of the law. Unless otherwise stated the results shown in this test report refer only to the sample(s) tested and such sample(s) are retained for 30 days only.  
**Attention: To check the authenticity of testing/inspection report & certificate, please contact us at telephone: (86-755) 8307 1443, or email: CN.Doccheck@sgs.com**



## Peak-to-Average Ratio for SA

### Test Result

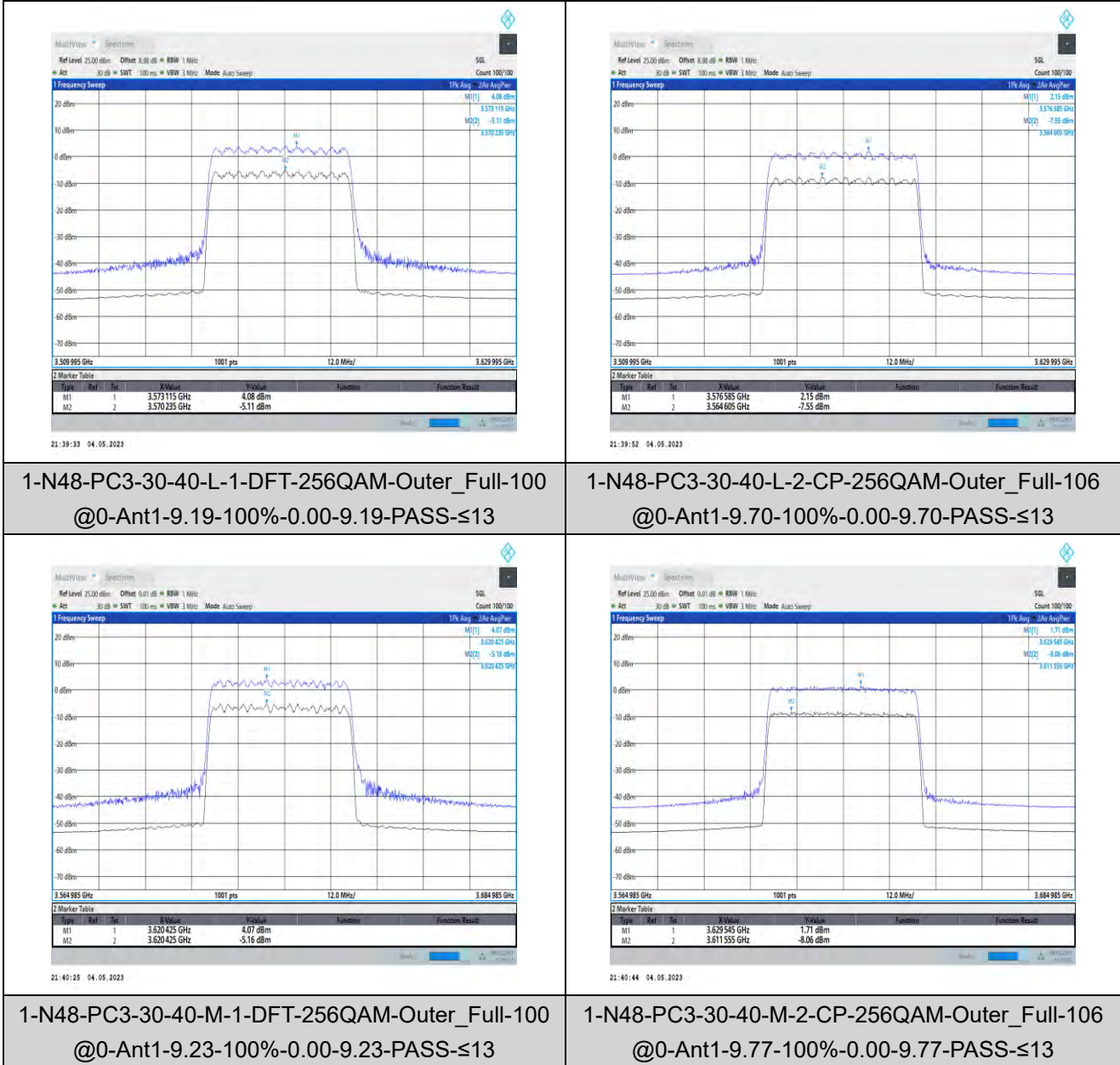
Band	SCS	Bandwidth	Modulation	Channel	RB Config	DutyCycle	Factor	Result	Limit	Verdict
N48	30	40	DFT-256QAM	L	Outer_Full	100%	0.00	9.19	≤13	PASS
N48	30	40	CP-256QAM	L	Outer_Full	100%	0.00	9.70	≤13	PASS
N48	30	40	DFT-256QAM	M	Outer_Full	100%	0.00	9.23	≤13	PASS
N48	30	40	CP-256QAM	M	Outer_Full	100%	0.00	9.77	≤13	PASS
N48	30	40	DFT-256QAM	H	Outer_Full	100%	0.00	9.52	≤13	PASS
N48	30	40	CP-256QAM	H	Outer_Full	100%	0.00	9.66	≤13	PASS



Unless otherwise agreed in writing, this document is issued by the Company subject to its General Conditions of Service printed overleaf, available on request or accessible at <http://www.sgs.com/en/Terms-and-Conditions.aspx> and, for electronic format documents, subject to Terms and Conditions for Electronic Documents at <http://www.sgs.com/en/Terms-and-Conditions/Terms-e-Document.aspx>. Attention is drawn to the limitation of liability, indemnification and jurisdiction issues defined therein. Any holder of this document is advised that information contained hereon reflects the Company's findings at the time of its intervention only and within the limits of Client's instructions, if any. The Company's sole responsibility is to its Client and this document does not exonerate parties to a transaction from exercising all their rights and obligations under the transaction documents. This document cannot be reproduced except in full, without prior written approval of the Company. Any unauthorized alteration, forgery or falsification of the content or appearance of this document is unlawful and offenders may be prosecuted to the fullest extent of the law. Unless otherwise stated the results shown in this test report refer only to the sample(s) tested and such sample(s) are retained for 30 days only.  
**Attention: To check the authenticity of testing / inspection report & certificate, please contact us at telephone: (86-755) 8307 1443, or email: CN.Doccheck@sgs.com**



### Test Graphs



1-N48-PC3-30-40-L-1-DFT-256QAM-Outer\_Full-100  
@0-Ant1-9.19-100%-0.00-9.19-PASS-≤13

1-N48-PC3-30-40-L-2-CP-256QAM-Outer\_Full-106  
@0-Ant1-9.70-100%-0.00-9.70-PASS-≤13

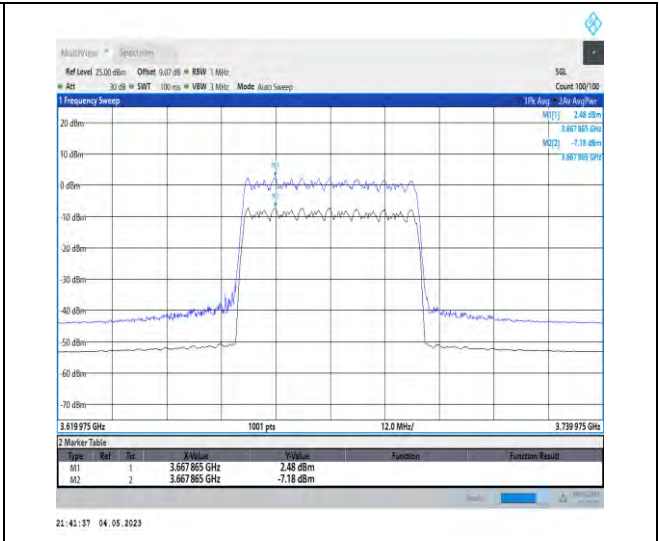
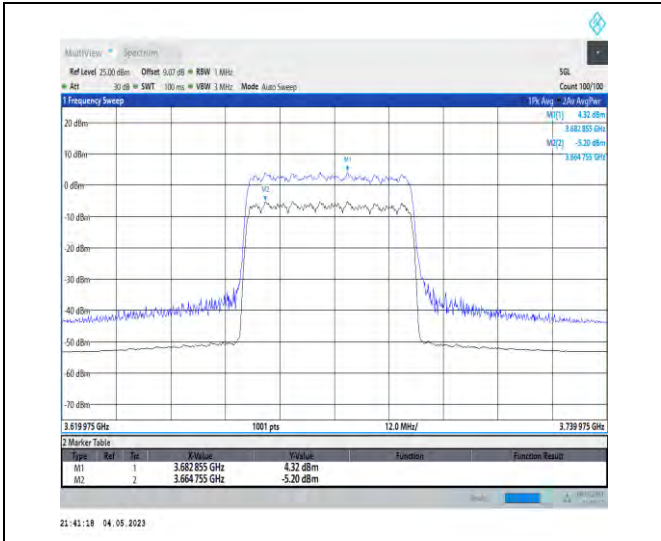
1-N48-PC3-30-40-M-1-DFT-256QAM-Outer\_Full-100  
@0-Ant1-9.23-100%-0.00-9.23-PASS-≤13

1-N48-PC3-30-40-M-2-CP-256QAM-Outer\_Full-106  
@0-Ant1-9.77-100%-0.00-9.77-PASS-≤13



Unless otherwise agreed in writing, this document is issued by the Company subject to its General Conditions of Service printed overleaf, available on request or accessible at <http://www.sgs.com/en/Terms-and-Conditions.aspx> and, for electronic format documents, subject to Terms and Conditions for Electronic Documents at <http://www.sgs.com/en/Terms-and-Conditions/Terms-e-Documents.aspx>. Attention is drawn to the limitation of liability, indemnification and jurisdiction issues defined therein. Any holder of this document is advised that information contained hereon reflects the Company's findings at the time of its intervention only and within the limits of Client's instructions, if any. The Company's sole responsibility is to its Client and this document does not exonerate parties to a transaction from exercising all their rights and obligations under the transaction documents. This document cannot be reproduced except in full, without prior written approval of the Company. Any unauthorized alteration, forgery or falsification of the content or appearance of this document is unlawful and offenders may be prosecuted to the fullest extent of the law. Unless otherwise stated the results shown in this test report refer only to the sample(s) tested and such sample(s) are retained for 30 days only.

Attention: To check the authenticity of testing/inspection report & certificate, please contact us at telephone: (86-755) 8307 1443, or email: [CN.Doccheck@sgs.com](mailto:CN.Doccheck@sgs.com)  
 No.1 Workshop, M-10, Middle Section, Science & Technology Park, Shenzhen, China 518057 t (86-755) 26012053 f (86-755) 26710594 www.sgs.com.cn  
 中国·深圳·科技园中区M-10栋一号厂房 邮编: 518057 t (86-755) 26012053 f (86-755) 26710594 sgs.china@sgs.com



1-N48-PC3-30-40-H-1-DFT-256QAM-Outer\_Full-100  
@0-Ant1-9.52-100%-0.00-9.52-PASS-≤13

1-N48-PC3-30-40-H-2-CP-256QAM-Outer\_Full-106  
@0-Ant1-9.66-100%-0.00-9.66-PASS-≤13



Unless otherwise agreed in writing, this document is issued by the Company subject to its General Conditions of Service printed overleaf, available on request or accessible at <http://www.sgs.com/en/Terms-and-Conditions.aspx> and, for electronic format documents, subject to Terms and Conditions for Electronic Documents at <http://www.sgs.com/en/Terms-and-Conditions/Terms-e-Documents.aspx>. Attention is drawn to the limitation of liability, indemnification and jurisdiction issues defined therein. Any holder of this document is advised that information contained hereon reflects the Company's findings at the time of its intervention only and within the limits of Client's instructions, if any. The Company's sole responsibility is to its Client and this document does not exonerate parties to a transaction from exercising all their rights and obligations under the transaction documents. This document cannot be reproduced except in full, without prior written approval of the Company. Any unauthorized alteration, forgery or falsification of the content or appearance of this document is unlawful and offenders may be prosecuted to the fullest extent of the law. Unless otherwise stated the results shown in this test report refer only to the sample(s) tested and such sample(s) are retained for 30 days only.  
**Attention: To check the authenticity of testing/inspection report & certificate, please contact us at telephone: (86-755) 83071443, or email: CN.Doccheck@sgs.com**

## Modulation characteristics for SA

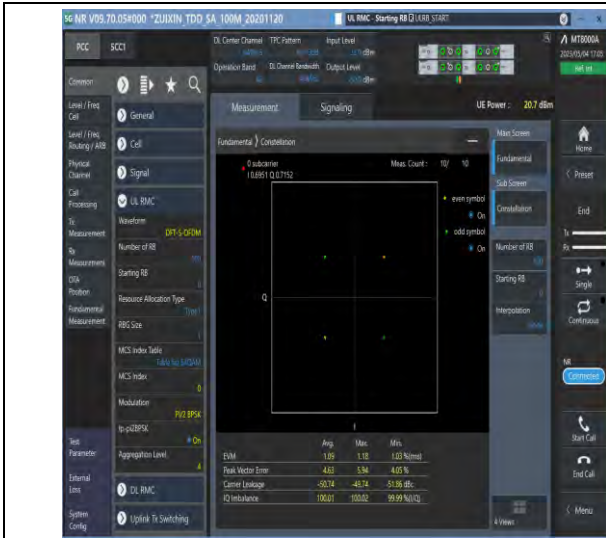
### Test Result

Band	SCS	Bandwidth	Modulation	Channel	RB Config	Result	Verdict
N48	30	40	DFT-PI2BPSK	M	Outer_Full	see graph	PASS
N48	30	40	DFT-QPSK	M	Outer_Full	see graph	PASS
N48	30	40	DFT-16QAM	M	Outer_Full	see graph	PASS
N48	30	40	DFT-64QAM	M	Outer_Full	see graph	PASS
N48	30	40	DFT-256QAM	M	Outer_Full	see graph	PASS
N48	30	40	CP-QPSK	M	Outer_Full	see graph	PASS
N48	30	40	CP-16QAM	M	Outer_Full	see graph	PASS
N48	30	40	CP-64QAM	M	Outer_Full	see graph	PASS
N48	30	40	CP-256QAM	M	Outer_Full	see graph	PASS

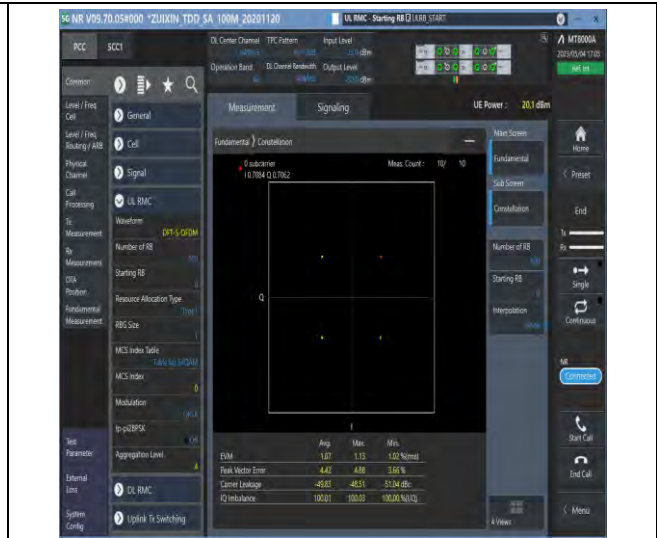


Unless otherwise agreed in writing, this document is issued by the Company subject to its General Conditions of Service printed overleaf, available on request or accessible at <http://www.sgs.com/en/Terms-and-Conditions.aspx> and, for electronic format documents, subject to Terms and Conditions for Electronic Documents at <http://www.sgs.com/en/Terms-and-Conditions/Terms-e-Document.aspx>. Attention is drawn to the limitation of liability, indemnification and jurisdiction issues defined therein. Any holder of this document is advised that information contained hereon reflects the Company's findings at the time of its intervention only and within the limits of Client's instructions, if any. The Company's sole responsibility is to its Client and this document does not exonerate parties to a transaction from exercising all their rights and obligations under the transaction documents. This document cannot be reproduced except in full, without prior written approval of the Company. Any unauthorized alteration, forgery or falsification of the content or appearance of this document is unlawful and offenders may be prosecuted to the fullest extent of the law. Unless otherwise stated the results shown in this test report refer only to the sample(s) tested and such sample(s) are retained for 30 days only.  
**Attention: To check the authenticity of testing / inspection report & certificate, please contact us at telephone: (86-755) 8307 1443, or email: CN.Doccheck@sgs.com**

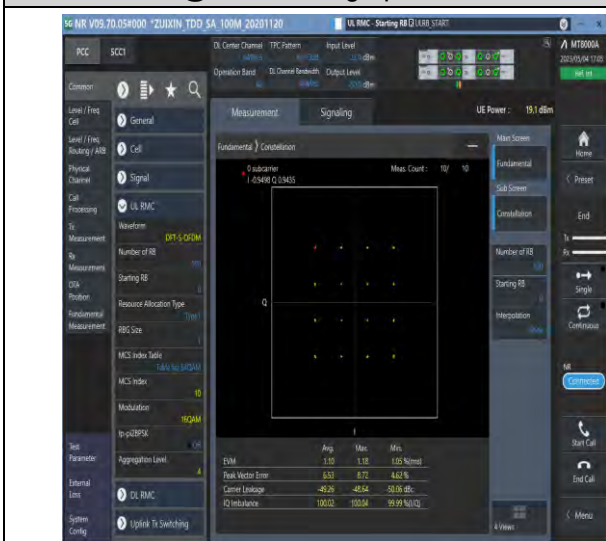
### Test Graphs



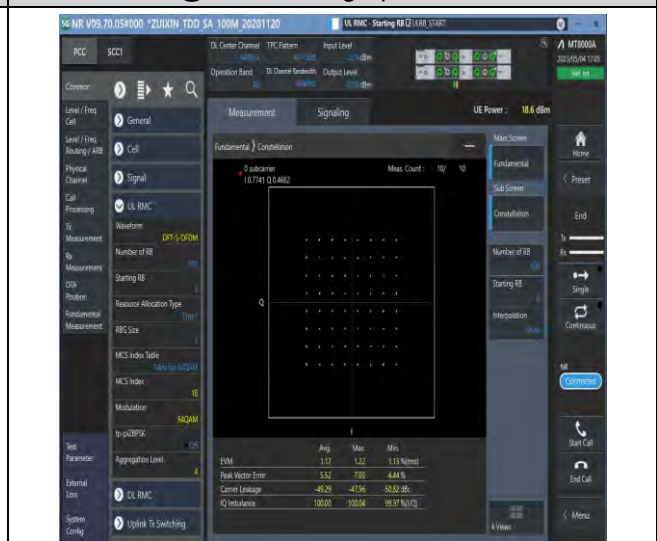
1-N48-PC3-30-40-M-1-DFT-PI2BPSK-Outer\_Full-100  
@0-Ant1-see graph-PASS



1-N48-PC3-30-40-M-2-DFT-QPSK-Outer\_Full-100  
@0-Ant1-see graph-PASS



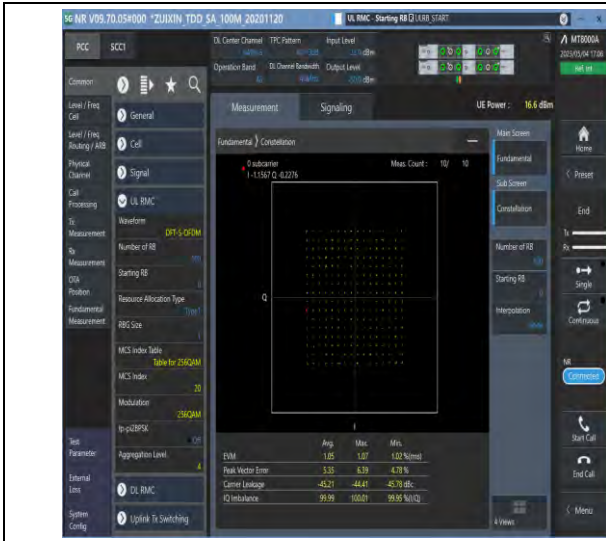
1-N48-PC3-30-40-M-3-DFT-16QAM-Outer\_Full-100  
@0-Ant1-see graph-PASS



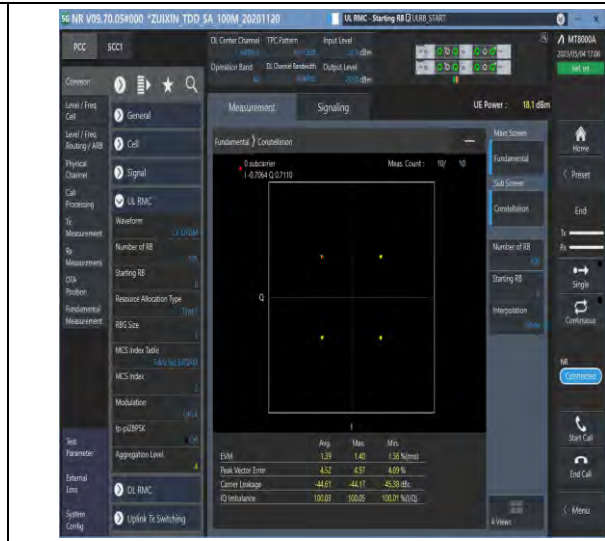
1-N48-PC3-30-40-M-4-DFT-64QAM-Outer\_Full-100  
@0-Ant1-see graph-PASS



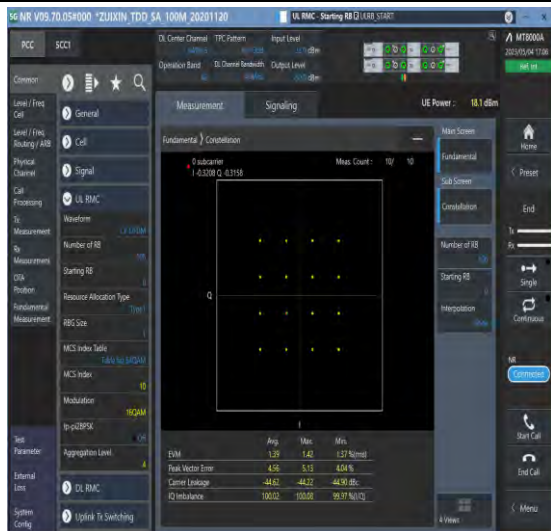
Unless otherwise agreed in writing, this document is issued by the Company subject to its General Conditions of Service printed overleaf, available on request or accessible at <http://www.sgs.com/en/Terms-and-Conditions.aspx> and, for electronic format documents, subject to Terms and Conditions for Electronic Documents at <http://www.sgs.com/en/Terms-and-Conditions/Terms-e-Document.aspx>. Attention is drawn to the limitation of liability, indemnification and jurisdiction issues defined therein. Any holder of this document is advised that information contained hereon reflects the Company's findings at the time of its intervention only and within the limits of Client's instructions, if any. The Company's sole responsibility is to its Client and this document does not exonerate parties to a transaction from exercising all their rights and obligations under the transaction documents. This document cannot be reproduced except in full, without prior written approval of the Company. Any unauthorized alteration, forgery or falsification of the content or appearance of this document is unlawful and offenders may be prosecuted to the fullest extent of the law. Unless otherwise stated the results shown in this test report refer only to the sample(s) tested and such sample(s) are retained for 30 days only.  
**Attention: To check the authenticity of testing/inspection report & certificate, please contact us at telephone: (86-755) 8307 1443, or email: CN.Doccheck@sgs.com**



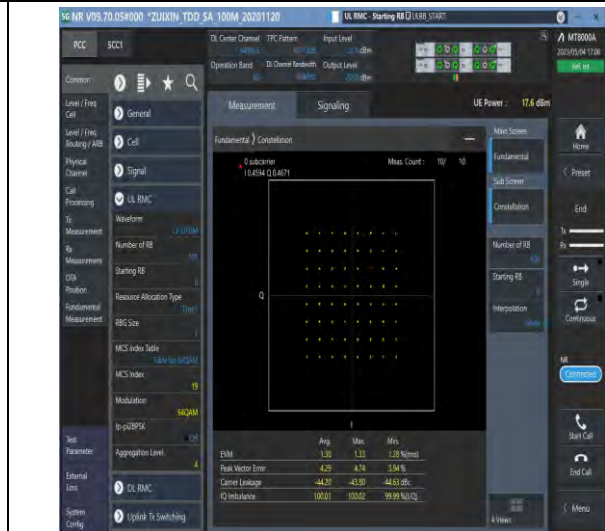
1-N48-PC3-30-40-M-5-DFT-256QAM-Outer\_Full-100  
@0-Ant1-see graph-PASS



1-N48-PC3-30-40-M-6-CP-QPSK-Outer\_Full-106@  
0-Ant1-see graph-PASS



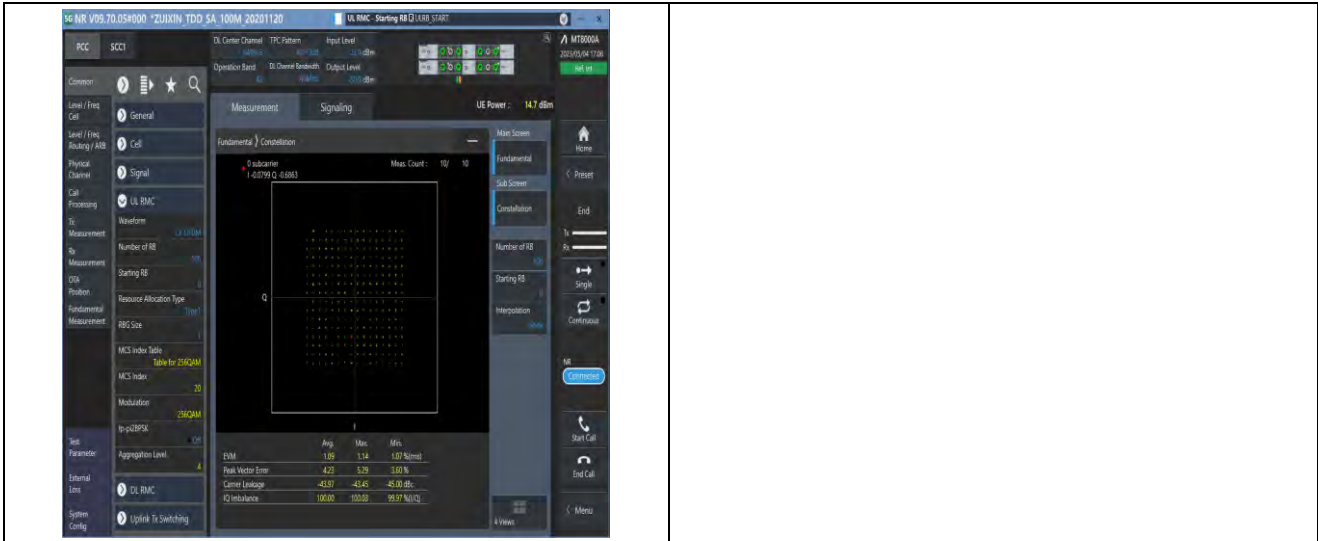
1-N48-PC3-30-40-M-7-CP-16QAM-Outer\_Full-106@  
0-Ant1-see graph-PASS



1-N48-PC3-30-40-M-8-CP-64QAM-Outer\_Full-106  
@0-Ant1-see graph-PASS



Unless otherwise agreed in writing, this document is issued by the Company subject to its General Conditions of Service printed overleaf, available on request or accessible at <http://www.sgs.com/en/Terms-and-Conditions.aspx> and, for electronic format documents, subject to Terms and Conditions for Electronic Documents at <http://www.sgs.com/en/Terms-and-Conditions/Terms-e-Documents.aspx>. Attention is drawn to the limitation of liability, indemnification and jurisdiction issues defined therein. Any holder of this document is advised that information contained hereon reflects the Company's findings at the time of its intervention only and within the limits of Client's instructions, if any. The Company's sole responsibility is to its Client and this document does not exonerate parties to a transaction from exercising all their rights and obligations under the transaction documents. This document cannot be reproduced except in full, without prior written approval of the Company. Any unauthorized alteration, forgery or falsification of the content or appearance of this document is unlawful and offenders may be prosecuted to the fullest extent of the law. Unless otherwise stated the results shown in this test report refer only to the sample(s) tested and such sample(s) are retained for 30 days only.  
**Attention: To check the authenticity of testing/inspection report & certificate, please contact us at telephone: (86-755) 8307 1443, or email: CN.Doccheck@sgs.com**



1-N48-PC3-30-40-M-9-CP-256QAM-Outer\_Full-106  
@0-Ant1-see graph-PASS



Unless otherwise agreed in writing, this document is issued by the Company subject to its General Conditions of Service printed overleaf, available on request or accessible at <http://www.sgs.com/en/Terms-and-Conditions.aspx> and, for electronic format documents, subject to Terms and Conditions for Electronic Documents at <http://www.sgs.com/en/Terms-and-Conditions/Terms-e-Documents.aspx>. Attention is drawn to the limitation of liability, indemnification and jurisdiction issues defined therein. Any holder of this document is advised that information contained hereon reflects the Company's findings at the time of its intervention only and within the limits of Client's instructions, if any. The Company's sole responsibility is to its Client and this document does not exonerate parties to a transaction from exercising all their rights and obligations under the transaction documents. This document cannot be reproduced except in full, without prior written approval of the Company. Any unauthorized alteration, forgery or falsification of the content or appearance of this document is unlawful and offenders may be prosecuted to the fullest extent of the law. Unless otherwise stated the results shown in this test report refer only to the sample(s) tested and such sample(s) are retained for 30 days only.  
**Attention: To check the authenticity of testing/inspection report & certificate, please contact us at telephone: (86-755) 8307 1443, or email: CN.Doccheck@sgs.com**

## 26dB Bandwidth and Occupied Bandwidth for SA

### Test Result

Band	SCS	Bandwidth	Modulation	Channel	RB Config	Result (99%)	Result (26dB)	Verdict
N48	30	10	DFT-QPSK	L	Outer_Full	8.595	8.980	PASS
N48	30	10	DFT-PI2BPSK	L	Outer_Full	8.571	9.300	PASS
N48	30	10	DFT-16QAM	L	Outer_Full	8.609	9.440	PASS
N48	30	10	DFT-64QAM	L	Outer_Full	8.591	9.260	PASS
N48	30	10	DFT-256QAM	L	Outer_Full	8.573	9.380	PASS
N48	30	10	CP-QPSK	L	Outer_Full	8.568	9.180	PASS
N48	30	10	CP-16QAM	L	Outer_Full	8.546	9.240	PASS
N48	30	10	CP-64QAM	L	Outer_Full	8.579	9.180	PASS
N48	30	10	CP-256QAM	L	Outer_Full	8.579	9.440	PASS
N48	30	10	DFT-QPSK	M	Outer_Full	8.532	9.280	PASS
N48	30	10	DFT-PI2BPSK	M	Outer_Full	8.560	9.420	PASS
N48	30	10	DFT-16QAM	M	Outer_Full	8.610	9.120	PASS
N48	30	10	DFT-64QAM	M	Outer_Full	8.620	9.100	PASS
N48	30	10	DFT-256QAM	M	Outer_Full	8.550	9.240	PASS
N48	30	10	CP-QPSK	M	Outer_Full	8.570	9.240	PASS
N48	30	10	CP-16QAM	M	Outer_Full	8.567	9.400	PASS
N48	30	10	CP-64QAM	M	Outer_Full	8.564	9.380	PASS
N48	30	10	CP-256QAM	M	Outer_Full	8.612	9.300	PASS
N48	30	10	DFT-QPSK	H	Outer_Full	8.606	9.360	PASS
N48	30	10	DFT-PI2BPSK	H	Outer_Full	8.598	9.240	PASS
N48	30	10	DFT-16QAM	H	Outer_Full	8.589	9.260	PASS
N48	30	10	DFT-64QAM	H	Outer_Full	8.594	9.340	PASS
N48	30	10	DFT-256QAM	H	Outer_Full	8.543	9.160	PASS
N48	30	10	CP-QPSK	H	Outer_Full	8.555	9.100	PASS
N48	30	10	CP-16QAM	H	Outer_Full	8.570	9.320	PASS
N48	30	10	CP-64QAM	H	Outer_Full	8.585	9.320	PASS
N48	30	10	CP-256QAM	H	Outer_Full	8.583	9.260	PASS
N48	30	15	DFT-QPSK	L	Outer_Full	12.832	14.040	PASS
N48	30	15	DFT-PI2BPSK	L	Outer_Full	12.817	13.830	PASS
N48	30	15	DFT-16QAM	L	Outer_Full	12.849	13.950	PASS
N48	30	15	DFT-64QAM	L	Outer_Full	12.850	13.500	PASS
N48	30	15	DFT-256QAM	L	Outer_Full	12.870	13.950	PASS
N48	30	15	CP-QPSK	L	Outer_Full	13.590	14.970	PASS



Unless otherwise agreed in writing, this document is issued by the Company subject to its General Conditions of Service printed overleaf, available on request or accessible at <http://www.sgs.com/en/Terms-and-Conditions.aspx> and, for electronic format documents, subject to Terms and Conditions for Electronic Documents at <http://www.sgs.com/en/Terms-and-Conditions/Terms-e-Documents.aspx>. Attention is drawn to the limitation of liability, indemnification and jurisdiction issues defined therein. Any holder of this document is advised that information contained hereon reflects the Company's findings at the time of its intervention only and within the limits of Client's instructions, if any. The Company's sole responsibility is to its Client and this document does not exonerate parties to a transaction from exercising all their rights and obligations under the transaction documents. This document cannot be reproduced except in full, without prior written approval of the Company. Any unauthorized alteration, forgery or falsification of the content or appearance of this document is unlawful and offenders may be prosecuted to the fullest extent of the law. Unless otherwise stated the results shown in this test report refer only to the sample(s) tested and such sample(s) are retained for 30 days only.

Attention: To check the authenticity of testing/inspection report & certificate, please contact us at telephone: (86-755) 83071443, or email: [CN.Doccheck@sgs.com](mailto:CN.Doccheck@sgs.com)  
 No.1 Workshop, M-10, Middle Section, Science & Technology Park, Shenzhen, China 518057 t (86-755) 26012053 f (86-755) 26710594 www.sgs.com.cn  
 中国·深圳·科技园中区M-10栋一号厂房 邮编: 518057 t (86-755) 26012053 f (86-755) 26710594 sgs.china@sgs.com



N48	30	15	CP-16QAM	L	Outer_Full	13.550	14.280	PASS
N48	30	15	CP-64QAM	L	Outer_Full	13.607	14.430	PASS
N48	30	15	CP-256QAM	L	Outer_Full	13.611	14.460	PASS
N48	30	15	DFT-QPSK	M	Outer_Full	12.831	14.130	PASS
N48	30	15	DFT-PI2BPSK	M	Outer_Full	12.880	13.950	PASS
N48	30	15	DFT-16QAM	M	Outer_Full	12.818	13.830	PASS
N48	30	15	DFT-64QAM	M	Outer_Full	12.855	14.040	PASS
N48	30	15	DFT-256QAM	M	Outer_Full	12.807	13.770	PASS
N48	30	15	CP-QPSK	M	Outer_Full	13.558	14.280	PASS
N48	30	15	CP-16QAM	M	Outer_Full	13.572	14.370	PASS
N48	30	15	CP-64QAM	M	Outer_Full	13.601	14.370	PASS
N48	30	15	CP-256QAM	M	Outer_Full	13.559	14.400	PASS
N48	30	15	DFT-QPSK	H	Outer_Full	12.884	13.980	PASS
N48	30	15	DFT-PI2BPSK	H	Outer_Full	12.875	13.980	PASS
N48	30	15	DFT-16QAM	H	Outer_Full	12.851	13.740	PASS
N48	30	15	DFT-64QAM	H	Outer_Full	12.844	13.890	PASS
N48	30	15	DFT-256QAM	H	Outer_Full	12.837	14.010	PASS
N48	30	15	CP-QPSK	H	Outer_Full	13.556	14.400	PASS
N48	30	15	CP-16QAM	H	Outer_Full	13.578	14.340	PASS
N48	30	15	CP-64QAM	H	Outer_Full	13.566	14.460	PASS
N48	30	15	CP-256QAM	H	Outer_Full	13.605	14.430	PASS
N48	30	20	DFT-QPSK	L	Outer_Full	17.816	18.720	PASS
N48	30	20	DFT-PI2BPSK	L	Outer_Full	17.853	18.640	PASS
N48	30	20	DFT-16QAM	L	Outer_Full	17.827	18.800	PASS
N48	30	20	DFT-64QAM	L	Outer_Full	17.879	19.000	PASS
N48	30	20	DFT-256QAM	L	Outer_Full	17.835	18.880	PASS
N48	30	20	CP-QPSK	L	Outer_Full	18.220	19.200	PASS
N48	30	20	CP-16QAM	L	Outer_Full	18.132	19.400	PASS
N48	30	20	CP-64QAM	L	Outer_Full	18.235	19.360	PASS
N48	30	20	CP-256QAM	L	Outer_Full	18.131	19.040	PASS
N48	30	20	DFT-QPSK	M	Outer_Full	17.784	18.760	PASS
N48	30	20	DFT-PI2BPSK	M	Outer_Full	17.729	18.800	PASS
N48	30	20	DFT-16QAM	M	Outer_Full	17.835	18.680	PASS
N48	30	20	DFT-64QAM	M	Outer_Full	17.797	18.600	PASS
N48	30	20	DFT-256QAM	M	Outer_Full	17.770	18.960	PASS
N48	30	20	CP-QPSK	M	Outer_Full	18.119	19.320	PASS
N48	30	20	CP-16QAM	M	Outer_Full	18.201	19.080	PASS
N48	30	20	CP-64QAM	M	Outer_Full	18.195	19.120	PASS
N48	30	20	CP-256QAM	M	Outer_Full	18.176	19.120	PASS



Unless otherwise agreed in writing, this document is issued by the Company subject to its General Conditions of Service printed overleaf, available on request or accessible at <http://www.sgs.com/en/Terms-and-Conditions.aspx> and, for electronic format documents, subject to Terms and Conditions for Electronic Documents at <http://www.sgs.com/en/Terms-and-Conditions/Terms-e-Document.aspx>. Attention is drawn to the limitation of liability, indemnification and jurisdiction issues defined therein. Any holder of this document is advised that information contained hereon reflects the Company's findings at the time of its intervention only and within the limits of Client's instructions, if any. The Company's sole responsibility is to its Client and this document does not exonerate parties to a transaction from exercising all their rights and obligations under the transaction documents. This document cannot be reproduced except in full, without prior written approval of the Company. Any unauthorized alteration, forgery or falsification of the content or appearance of this document is unlawful and offenders may be prosecuted to the fullest extent of the law. Unless otherwise stated the results shown in this test report refer only to the sample(s) tested and such sample(s) are retained for 30 days only.  
**Attention: To check the authenticity of testing/inspection report & certificate, please contact us at telephone: (86-755) 8307 1443, or email: CN.Doccheck@sgs.com**  
 No.1 Workshop, M-10, Middle Section, Science & Technology Park, Shenzhen, China 518057 t (86-755) 26012053 f (86-755) 26710594 www.sgsgroup.com.cn  
 中国·深圳·科技园中区M-10栋一号厂房 邮编: 518057 t (86-755) 26012053 f (86-755) 26710594 sgs.china@sgs.com





N48	30	20	DFT-QPSK	H	Outer_Full	17.820	18.760	PASS
N48	30	20	DFT-PI2BPSK	H	Outer_Full	17.790	19.040	PASS
N48	30	20	DFT-16QAM	H	Outer_Full	17.842	18.680	PASS
N48	30	20	DFT-64QAM	H	Outer_Full	17.746	18.880	PASS
N48	30	20	DFT-256QAM	H	Outer_Full	17.793	19.080	PASS
N48	30	20	CP-QPSK	H	Outer_Full	18.185	19.280	PASS
N48	30	20	CP-16QAM	H	Outer_Full	18.237	19.160	PASS
N48	30	20	CP-64QAM	H	Outer_Full	18.203	19.080	PASS
N48	30	20	CP-256QAM	H	Outer_Full	18.203	19.040	PASS
N48	30	30	DFT-QPSK	L	Outer_Full	26.822	27.900	PASS
N48	30	30	DFT-PI2BPSK	L	Outer_Full	26.770	27.900	PASS
N48	30	30	DFT-16QAM	L	Outer_Full	26.740	28.020	PASS
N48	30	30	DFT-64QAM	L	Outer_Full	26.730	27.840	PASS
N48	30	30	DFT-256QAM	L	Outer_Full	26.741	28.320	PASS
N48	30	30	CP-QPSK	L	Outer_Full	27.907	28.920	PASS
N48	30	30	CP-16QAM	L	Outer_Full	27.810	29.580	PASS
N48	30	30	CP-64QAM	L	Outer_Full	27.850	29.520	PASS
N48	30	30	CP-256QAM	L	Outer_Full	27.827	29.460	PASS
N48	30	30	DFT-QPSK	M	Outer_Full	26.676	28.260	PASS
N48	30	30	DFT-PI2BPSK	M	Outer_Full	26.819	27.960	PASS
N48	30	30	DFT-16QAM	M	Outer_Full	26.741	27.780	PASS
N48	30	30	DFT-64QAM	M	Outer_Full	26.748	28.260	PASS
N48	30	30	DFT-256QAM	M	Outer_Full	26.736	28.320	PASS
N48	30	30	CP-QPSK	M	Outer_Full	27.845	28.920	PASS
N48	30	30	CP-16QAM	M	Outer_Full	27.881	29.100	PASS
N48	30	30	CP-64QAM	M	Outer_Full	27.874	28.980	PASS
N48	30	30	CP-256QAM	M	Outer_Full	27.826	28.920	PASS
N48	30	30	DFT-QPSK	H	Outer_Full	26.788	28.320	PASS
N48	30	30	DFT-PI2BPSK	H	Outer_Full	26.798	28.380	PASS
N48	30	30	DFT-16QAM	H	Outer_Full	26.855	28.380	PASS
N48	30	30	DFT-64QAM	H	Outer_Full	26.729	28.260	PASS
N48	30	30	DFT-256QAM	H	Outer_Full	26.778	28.380	PASS
N48	30	30	CP-QPSK	H	Outer_Full	27.814	29.160	PASS
N48	30	30	CP-16QAM	H	Outer_Full	27.866	29.340	PASS
N48	30	30	CP-64QAM	H	Outer_Full	27.882	29.280	PASS
N48	30	30	CP-256QAM	H	Outer_Full	27.795	29.220	PASS
N48	30	40	DFT-QPSK	L	Outer_Full	35.766	37.520	PASS
N48	30	40	DFT-PI2BPSK	L	Outer_Full	35.775	37.200	PASS
N48	30	40	DFT-16QAM	L	Outer_Full	35.745	38.360	PASS



Unless otherwise agreed in writing, this document is issued by the Company subject to its General Conditions of Service printed overleaf, available on request or accessible at <http://www.sgs.com/en/Terms-and-Conditions.aspx> and, for electronic format documents, subject to Terms and Conditions for Electronic Documents at <http://www.sgs.com/en/Terms-and-Conditions/Terms-e-Documents.aspx>. Attention is drawn to the limitation of liability, indemnification and jurisdiction issues defined therein. Any holder of this document is advised that information contained hereon reflects the Company's findings at the time of its intervention only and within the limits of Client's instructions, if any. The Company's sole responsibility is to its Client and this document does not exonerate parties to a transaction from exercising all their rights and obligations under the transaction documents. This document cannot be reproduced except in full, without prior written approval of the Company. Any unauthorized alteration, forgery or falsification of the content or appearance of this document is unlawful and offenders may be prosecuted to the fullest extent of the law. Unless otherwise stated the results shown in this test report refer only to the sample(s) tested and such sample(s) are retained for 30 days only.  
**Attention: To check the authenticity of testing/inspection report & certificate, please contact us at telephone: (86-755) 8307 1443, or email: CN.Doccheck@sgs.com**  
 No. 1 Workshop, M-10, Middle Section, Science & Technology Park, Shenzhen, China 518057 t (86-755) 26012053 f (86-755) 26710594 www.sgsgroup.com.cn  
 中国·深圳·科技园中区M-10栋一号厂房 邮编: 518057 t (86-755) 26012053 f (86-755) 26710594 sgs.china@sgs.com

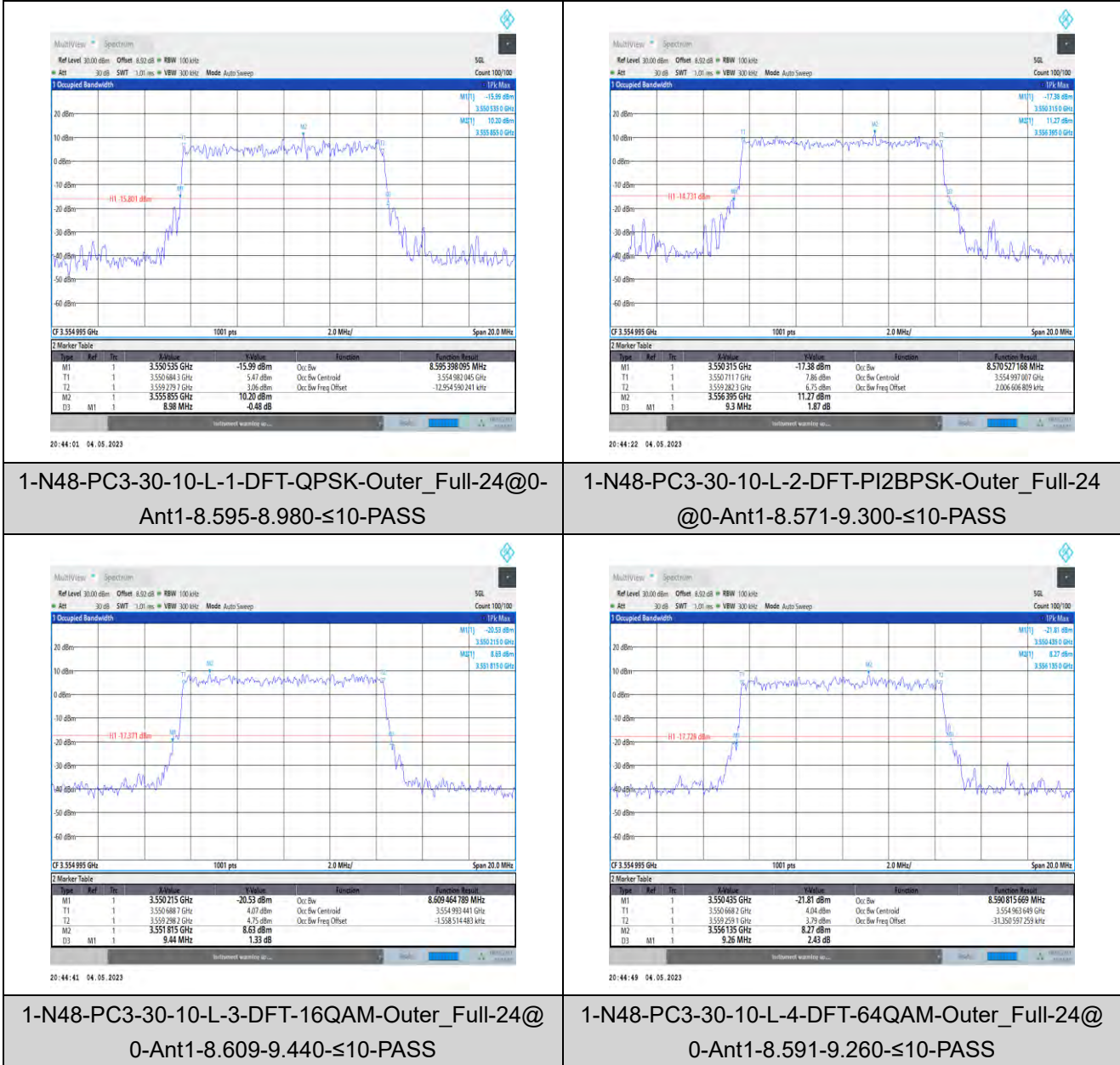


N48	30	40	DFT-64QAM	L	Outer_Full	35.698	37.760	PASS
N48	30	40	DFT-256QAM	L	Outer_Full	35.740	37.440	PASS
N48	30	40	CP-QPSK	L	Outer_Full	37.892	39.760	PASS
N48	30	40	CP-16QAM	L	Outer_Full	37.945	39.600	PASS
N48	30	40	CP-64QAM	L	Outer_Full	37.852	39.840	PASS
N48	30	40	CP-256QAM	L	Outer_Full	37.711	39.600	PASS
N48	30	40	DFT-QPSK	M	Outer_Full	35.703	37.840	PASS
N48	30	40	DFT-PI2BPSK	M	Outer_Full	35.755	37.680	PASS
N48	30	40	DFT-16QAM	M	Outer_Full	35.778	37.280	PASS
N48	30	40	DFT-64QAM	M	Outer_Full	35.760	37.360	PASS
N48	30	40	DFT-256QAM	M	Outer_Full	35.748	37.840	PASS
N48	30	40	CP-QPSK	M	Outer_Full	37.776	39.360	PASS
N48	30	40	CP-16QAM	M	Outer_Full	37.770	39.680	PASS
N48	30	40	CP-64QAM	M	Outer_Full	37.843	39.440	PASS
N48	30	40	CP-256QAM	M	Outer_Full	37.778	39.280	PASS
N48	30	40	DFT-QPSK	H	Outer_Full	35.757	37.760	PASS
N48	30	40	DFT-PI2BPSK	H	Outer_Full	35.686	37.360	PASS
N48	30	40	DFT-16QAM	H	Outer_Full	35.705	37.440	PASS
N48	30	40	DFT-64QAM	H	Outer_Full	35.779	37.520	PASS
N48	30	40	DFT-256QAM	H	Outer_Full	35.769	37.840	PASS
N48	30	40	CP-QPSK	H	Outer_Full	37.772	39.680	PASS
N48	30	40	CP-16QAM	H	Outer_Full	37.769	39.680	PASS
N48	30	40	CP-64QAM	H	Outer_Full	37.868	39.440	PASS
N48	30	40	CP-256QAM	H	Outer_Full	37.708	39.520	PASS



Unless otherwise agreed in writing, this document is issued by the Company subject to its General Conditions of Service printed overleaf, available on request or accessible at <http://www.sgs.com/en/Terms-and-Conditions.aspx> and, for electronic format documents, subject to Terms and Conditions for Electronic Documents at <http://www.sgs.com/en/Terms-and-Conditions/Terms-e-Documents.aspx>. Attention is drawn to the limitation of liability, indemnification and jurisdiction issues defined therein. Any holder of this document is advised that information contained hereon reflects the Company's findings at the time of its intervention only and within the limits of Client's instructions, if any. The Company's sole responsibility is to its Client and this document does not exonerate parties to a transaction from exercising all their rights and obligations under the transaction documents. This document cannot be reproduced except in full, without prior written approval of the Company. Any unauthorized alteration, forgery or falsification of the content or appearance of this document is unlawful and offenders may be prosecuted to the fullest extent of the law. Unless otherwise stated the results shown in this test report refer only to the sample(s) tested and such sample(s) are retained for 30 days only.  
**Attention: To check the authenticity of testing / inspection report & certificate, please contact us at telephone: (86-755) 8307 1443, or email: CN.Doccheck@sgs.com**

## Test Graphs



Unless otherwise agreed in writing, this document is issued by the Company subject to its General Conditions of Service printed overleaf, available on request or accessible at <http://www.sgs.com/en/Terms-and-Conditions.aspx> and, for electronic format documents, subject to Terms and Conditions for Electronic Documents at <http://www.sgs.com/en/Terms-and-Conditions/Terms-e-Documents.aspx>. Attention is drawn to the limitation of liability, indemnification and jurisdiction issues defined therein. Any holder of this document is advised that information contained hereon reflects the Company's findings at the time of its intervention only and within the limits of Client's instructions, if any. The Company's sole responsibility is to its Client and this document does not exonerate parties to a transaction from exercising all their rights and obligations under the transaction documents. This document cannot be reproduced except in full, without prior written approval of the Company. Any unauthorized alteration, forgery or falsification of the content or appearance of this document is unlawful and offenders may be prosecuted to the fullest extent of the law. Unless otherwise stated the results shown in this test report refer only to the sample(s) tested and such sample(s) are retained for 30 days only.

Attention: To check the authenticity of testing/inspection report & certificate, please contact us at telephone: (86-755) 8307 1443, or email: [CN.Doccheck@sgs.com](mailto:CN.Doccheck@sgs.com)

No.1 Workshop, M-10, Middle Section, Science & Technology Park, Shenzhen, China 518057 t (86-755) 26012053 f (86-755) 26710594 www.sgs.com.cn  
 中国·深圳·科技园中区M-10栋一号厂房 邮编: 518057 t (86-755) 26012053 f (86-755) 26710594 sgs.china@sgs.com



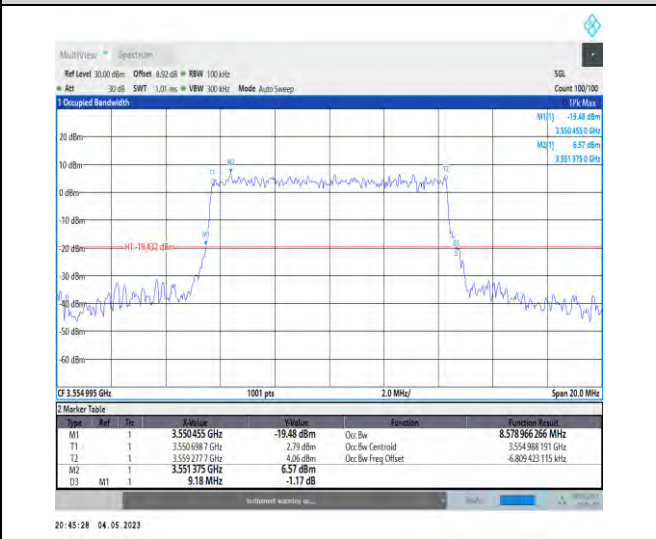
1-N48-PC3-30-10-L-5-DFT-256QAM-Outer\_Full-24  
@0-Ant1-8.573-9.380-≤10-PASS



1-N48-PC3-30-10-L-6-CP-QPSK-Outer\_Full-24@0-  
Ant1-8.568-9.180-≤10-PASS



1-N48-PC3-30-10-L-7-CP-16QAM-Outer\_Full-24@0-  
Ant1-8.546-9.240-≤10-PASS



1-N48-PC3-30-10-L-8-CP-64QAM-Outer\_Full-24@0-  
Ant1-8.579-9.180-≤10-PASS



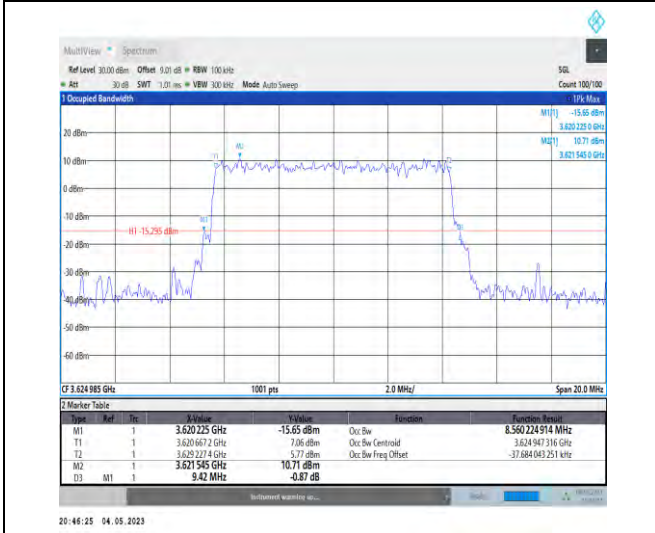
Unless otherwise agreed in writing, this document is issued by the Company subject to its General Conditions of Service printed overleaf, available on request or accessible at <http://www.sgs.com/en/Terms-and-Conditions.aspx> and, for electronic format documents, subject to Terms and Conditions for Electronic Documents at <http://www.sgs.com/en/Terms-and-Conditions/Terms-e-Documents.aspx>. Attention is drawn to the limitation of liability, indemnification and jurisdiction issues defined therein. Any holder of this document is advised that information contained hereon reflects the Company's findings at the time of its intervention only and within the limits of Client's instructions, if any. The Company's sole responsibility is to its Client and this document does not exonerate parties to a transaction from exercising all their rights and obligations under the transaction documents. This document cannot be reproduced except in full, without prior written approval of the Company. Any unauthorized alteration, forgery or falsification of the content or appearance of this document is unlawful and offenders may be prosecuted to the fullest extent of the law. Unless otherwise stated the results shown in this test report refer only to the sample(s) tested and such sample(s) are retained for 30 days only.  
**Attention: To check the authenticity of testing/inspection report & certificate, please contact us at telephone: (86-755) 83071443, or email: CN.Doccheck@sgs.com**



1-N48-PC3-30-10-L-9-CP-256QAM-Outer\_Full-24@  
0-Ant1-8.579-9.440-≤10-PASS



1-N48-PC3-30-10-M-1-DFT-QPSK-Outer\_Full-24@0  
-Ant1-8.532-9.280-≤10-PASS

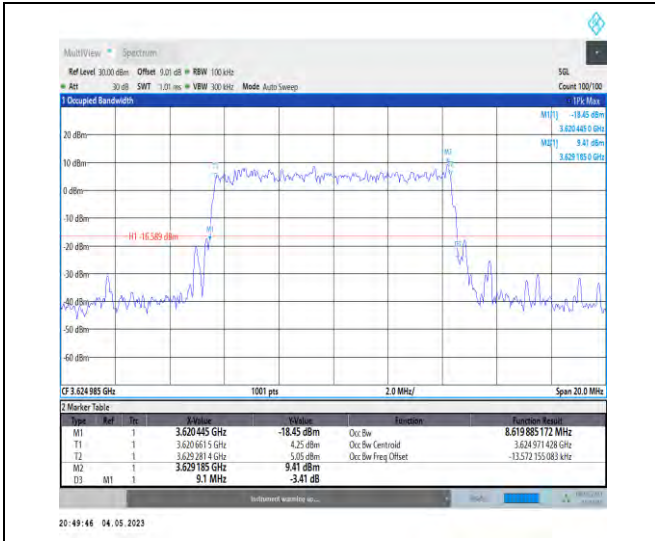


1-N48-PC3-30-10-M-2-DFT-PI2BPSK-Outer\_Full-24  
@0-Ant1-8.56-9.420-≤10-PASS



1-N48-PC3-30-10-M-3-DFT-16QAM-Outer\_Full-24@  
0-Ant1-8.61-9.120-≤10-PASS

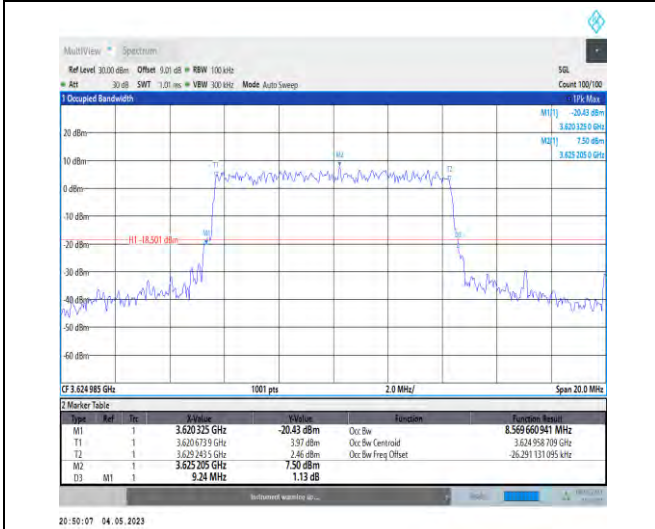




1-N48-PC3-30-10-M-4-DFT-64QAM-Outer\_Full-24@  
0-Ant1-8.62-9.100-≤10-PASS



1-N48-PC3-30-10-M-5-DFT-256QAM-Outer\_Full-24@  
0-Ant1-8.55-9.240-≤10-PASS



1-N48-PC3-30-10-M-6-CP-QPSK-Outer\_Full-24@0-  
Ant1-8.57-9.240-≤10-PASS



1-N48-PC3-30-10-M-7-CP-16QAM-Outer\_Full-24@0-  
-Ant1-8.567-9.400-≤10-PASS



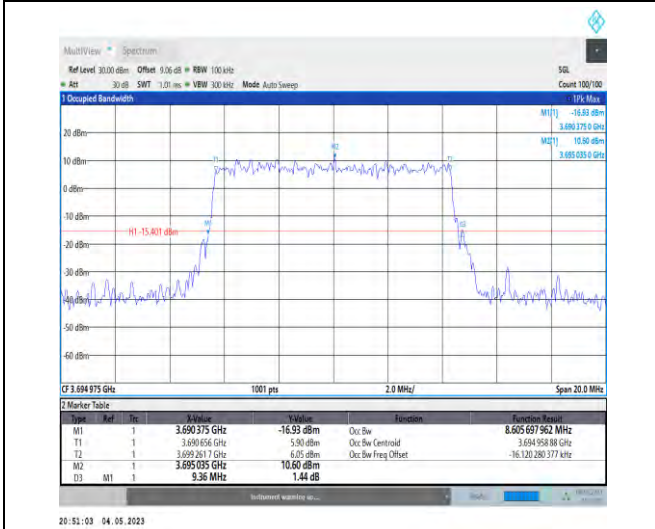
Unless otherwise agreed in writing, this document is issued by the Company subject to its General Conditions of Service printed overleaf, available on request or accessible at <http://www.sgs.com/en/Terms-and-Conditions.aspx> and, for electronic format documents, subject to Terms and Conditions for Electronic Documents at <http://www.sgs.com/en/Terms-and-Conditions/Terms-e-Documents.aspx>. Attention is drawn to the limitation of liability, indemnification and jurisdiction issues defined therein. Any holder of this document is advised that information contained hereon reflects the Company's findings at the time of its intervention only and within the limits of Client's instructions, if any. The Company's sole responsibility is to its Client and this document does not exonerate parties to a transaction from exercising all their rights and obligations under the transaction documents. This document cannot be reproduced except in full, without prior written approval of the Company. Any unauthorized alteration, forgery or falsification of the content or appearance of this document is unlawful and offenders may be prosecuted to the fullest extent of the law. Unless otherwise stated the results shown in this test report refer only to the sample(s) tested and such sample(s) are retained for 30 days only.  
**Attention: To check the authenticity of testing/inspection report & certificate, please contact us at telephone: (86-755) 83071443, or email: CN.Doccheck@sgs.com**



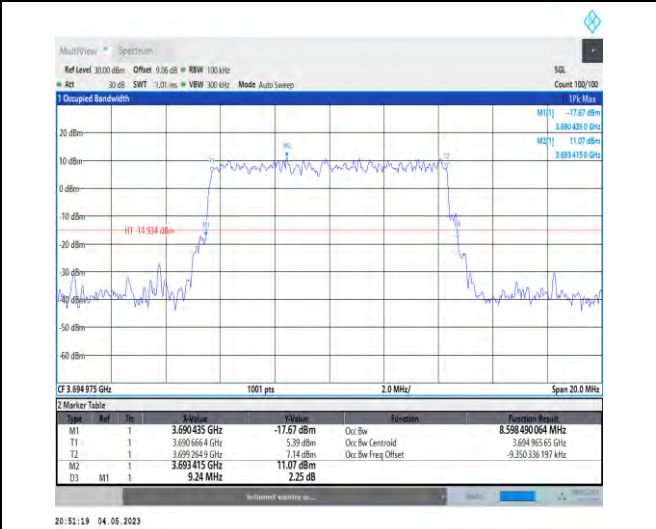
1-N48-PC3-30-10-M-8-CP-64QAM-Outer\_Full-24@0-Ant1-8.564-9.380-≤10-PASS



1-N48-PC3-30-10-M-9-CP-256QAM-Outer\_Full-24@0-Ant1-8.612-9.300-≤10-PASS



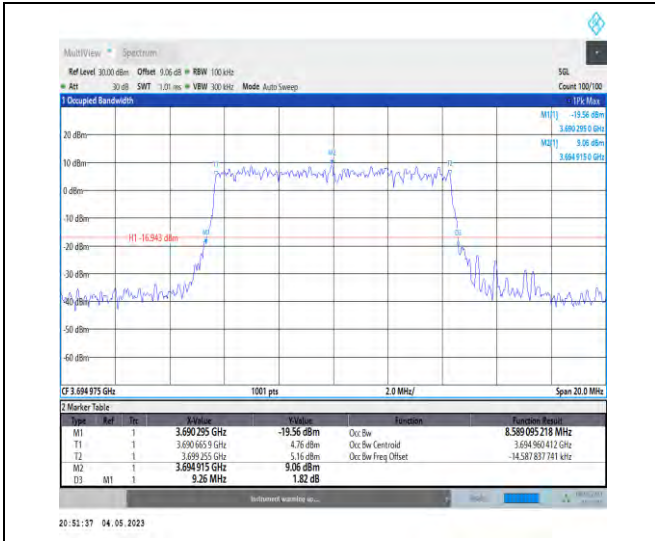
1-N48-PC3-30-10-H-1-DFT-QPSK-Outer\_Full-24@0-Ant1-8.606-9.360-≤10-PASS



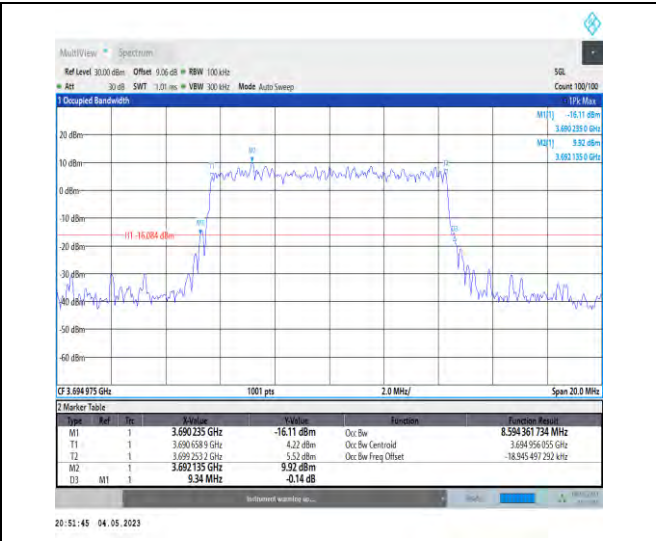
1-N48-PC3-30-10-H-2-DFT-PI2BPSK-Outer\_Full-24@0-Ant1-8.598-9.240-≤10-PASS



Unless otherwise agreed in writing, this document is issued by the Company subject to its General Conditions of Service printed overleaf, available on request or accessible at <http://www.sgs.com/en/Terms-and-Conditions.aspx> and, for electronic format documents, subject to Terms and Conditions for Electronic Documents at <http://www.sgs.com/en/Terms-and-Conditions/Terms-e-Document.aspx>. Attention is drawn to the limitation of liability, indemnification and jurisdiction issues defined therein. Any holder of this document is advised that information contained hereon reflects the Company's findings at the time of its intervention only and within the limits of Client's instructions, if any. The Company's sole responsibility is to its Client and this document does not exonerate parties to a transaction from exercising all their rights and obligations under the transaction documents. This document cannot be reproduced except in full, without prior written approval of the Company. Any unauthorized alteration, forgery or falsification of the content or appearance of this document is unlawful and offenders may be prosecuted to the fullest extent of the law. Unless otherwise stated the results shown in this test report refer only to the sample(s) tested and such sample(s) are retained for 30 days only.  
**Attention: To check the authenticity of testing/inspection report & certificate, please contact us at telephone: (86-755) 83071443, or email: CN.Doccheck@sgs.com**



1-N48-PC3-30-10-H-3-DFT-16QAM-Outer\_Full-24@  
0-Ant1-8.589-9.260-≤10-PASS



1-N48-PC3-30-10-H-4-DFT-64QAM-Outer\_Full-24@  
0-Ant1-8.594-9.340-≤10-PASS



1-N48-PC3-30-10-H-5-DFT-256QAM-Outer\_Full-24  
@0-Ant1-8.543-9.160-≤10-PASS



1-N48-PC3-30-10-H-6-CP-QPSK-Outer\_Full-24@0-  
Ant1-8.555-9.100-≤10-PASS



Unless otherwise agreed in writing, this document is issued by the Company subject to its General Conditions of Service printed overleaf, available on request or accessible at <http://www.sgs.com/en/Terms-and-Conditions.aspx> and, for electronic format documents, subject to Terms and Conditions for Electronic Documents at <http://www.sgs.com/en/Terms-and-Conditions/Terms-e-Documents.aspx>. Attention is drawn to the limitation of liability, indemnification and jurisdiction issues defined therein. Any holder of this document is advised that information contained hereon reflects the Company's findings at the time of its intervention only and within the limits of Client's instructions, if any. The Company's sole responsibility is to its Client and this document does not exonerate parties to a transaction from exercising all their rights and obligations under the transaction documents. This document cannot be reproduced except in full, without prior written approval of the Company. Any unauthorized alteration, forgery or falsification of the content or appearance of this document is unlawful and offenders may be prosecuted to the fullest extent of the law. Unless otherwise stated the results shown in this test report refer only to the sample(s) tested and such sample(s) are retained for 30 days only.  
**Attention: To check the authenticity of testing/inspection report & certificate, please contact us at telephone: (86-755) 83071443, or email: CN.Doccheck@sgs.com**

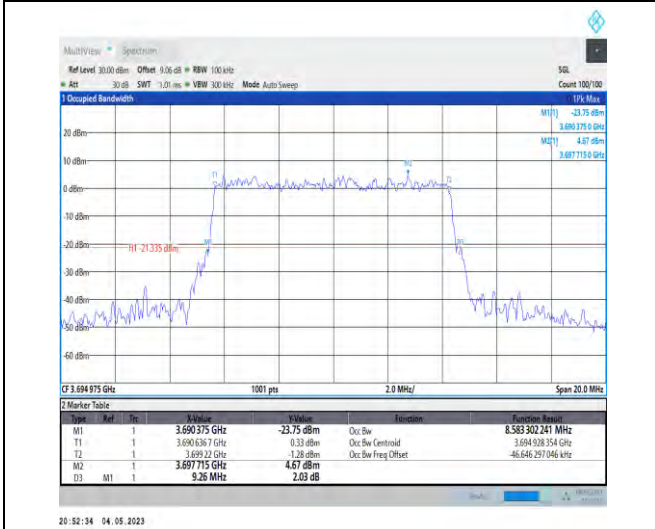




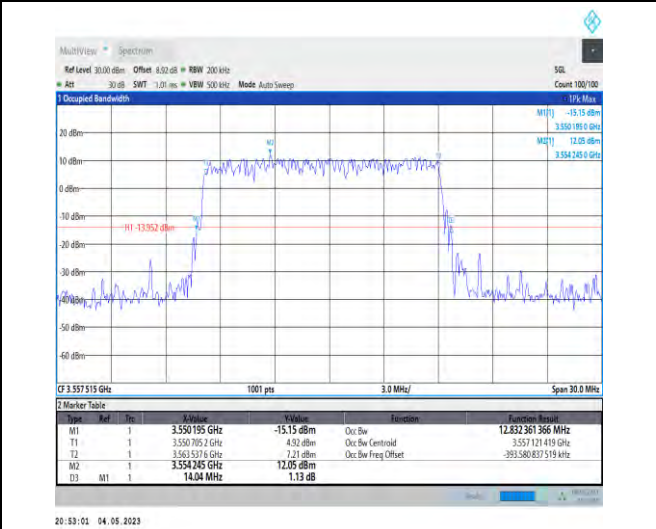
1-N48-PC3-30-10-H-7-CP-16QAM-Outer\_Full-24@0  
-Ant1-8.57-9.320-≤10-PASS



1-N48-PC3-30-10-H-8-CP-64QAM-Outer\_Full-24@0  
-Ant1-8.585-9.320-≤10-PASS



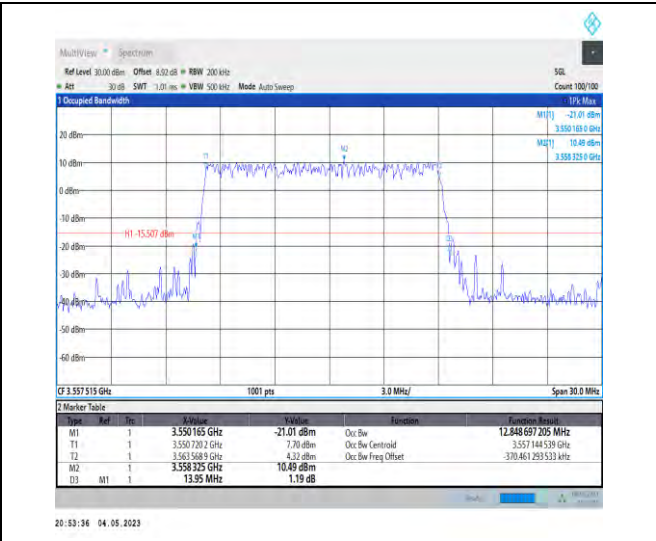
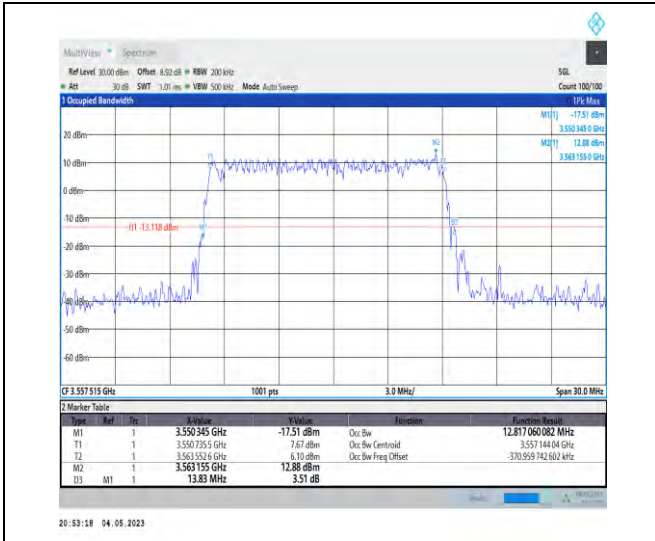
1-N48-PC3-30-10-H-9-CP-256QAM-Outer\_Full-24@0  
0-Ant1-8.583-9.260-≤10-PASS



1-N48-PC3-30-15-L-1-DFT-QPSK-Outer\_Full-36@0-  
Ant1-12.832-14.040-≤15-PASS

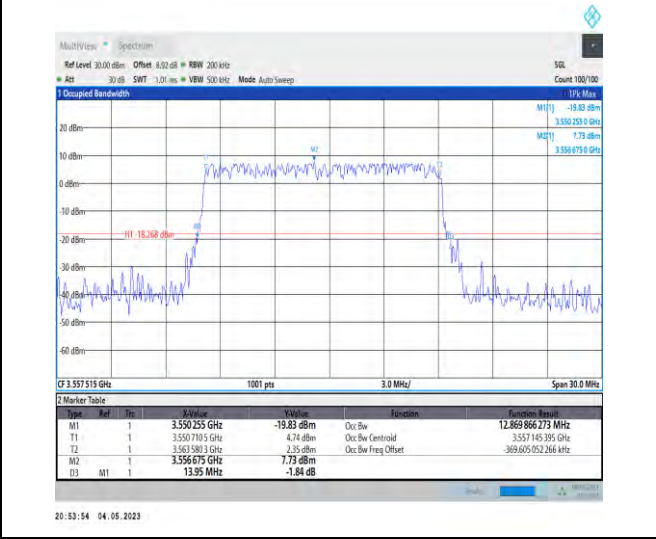
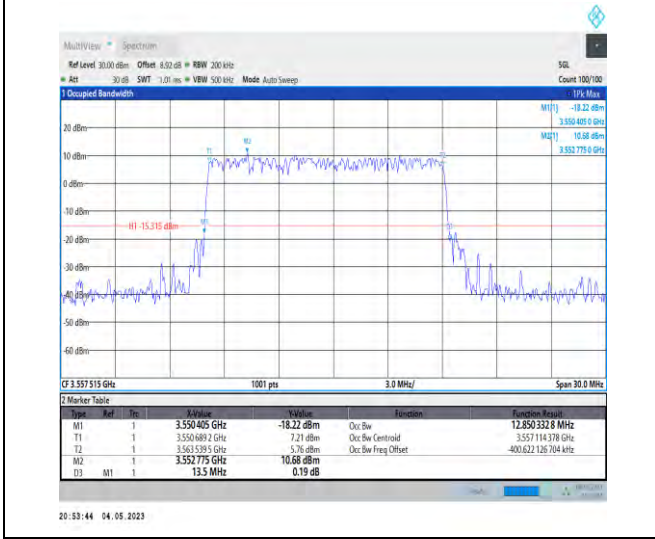


Unless otherwise agreed in writing, this document is issued by the Company subject to its General Conditions of Service printed overleaf, available on request or accessible at <http://www.sgs.com/en/Terms-and-Conditions.aspx> and, for electronic format documents, subject to Terms and Conditions for Electronic Documents at <http://www.sgs.com/en/Terms-and-Conditions/Terms-e-Documents.aspx>. Attention is drawn to the limitation of liability, indemnification and jurisdiction issues defined therein. Any holder of this document is advised that information contained hereon reflects the Company's findings at the time of its intervention only and within the limits of Client's instructions, if any. The Company's sole responsibility is to its Client and this document does not exonerate parties to a transaction from exercising all their rights and obligations under the transaction documents. This document cannot be reproduced except in full, without prior written approval of the Company. Any unauthorized alteration, forgery or falsification of the content or appearance of this document is unlawful and offenders may be prosecuted to the fullest extent of the law. Unless otherwise stated the results shown in this test report refer only to the sample(s) tested and such sample(s) are retained for 30 days only.  
**Attention: To check the authenticity of testing/inspection report & certificate, please contact us at telephone: (86-755) 83071443, or email: CN.Doccheck@sgs.com**



1-N48-PC3-30-15-L-2-DFT-PI2BPSK-Outer\_Full-36 @0-Ant1-12.817-13.830-≤15-PASS

1-N48-PC3-30-15-L-3-DFT-16QAM-Outer\_Full-36 @0-Ant1-12.849-13.950-≤15-PASS



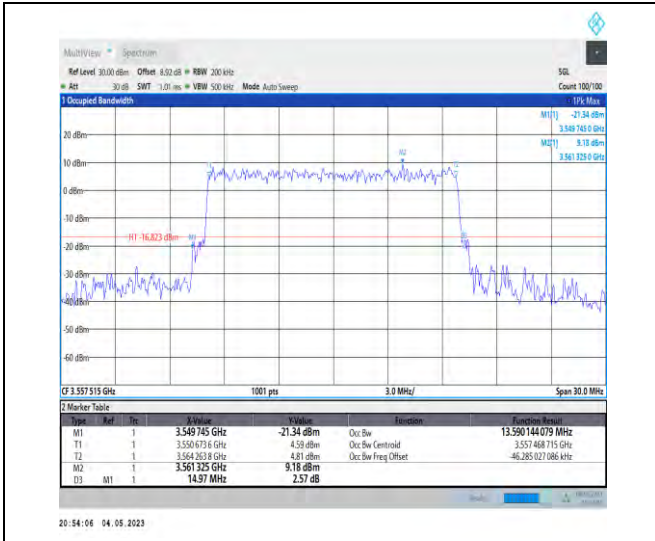
1-N48-PC3-30-15-L-4-DFT-64QAM-Outer\_Full-36 @0-Ant1-12.85-13.500-≤15-PASS

1-N48-PC3-30-15-L-5-DFT-256QAM-Outer\_Full-36 @0-Ant1-12.87-13.950-≤15-PASS

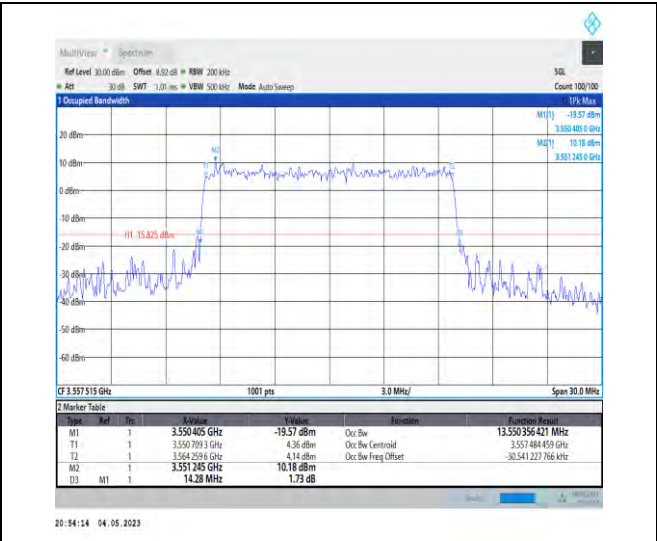


Unless otherwise agreed in writing, this document is issued by the Company subject to its General Conditions of Service printed overleaf, available on request or accessible at <http://www.sgs.com/en/Terms-and-Conditions.aspx> and, for electronic format documents, subject to Terms and Conditions for Electronic Documents at <http://www.sgs.com/en/Terms-and-Conditions/Terms-e-Documents.aspx>. Attention is drawn to the limitation of liability, indemnification and jurisdiction issues defined therein. Any holder of this document is advised that information contained hereon reflects the Company's findings at the time of its intervention only and within the limits of Client's instructions, if any. The Company's sole responsibility is to its Client and this document does not exonerate parties to a transaction from exercising all their rights and obligations under the transaction documents. This document cannot be reproduced except in full, without prior written approval of the Company. Any unauthorized alteration, forgery or falsification of the content or appearance of this document is unlawful and offenders may be prosecuted to the fullest extent of the law. Unless otherwise stated the results shown in this test report refer only to the sample(s) tested and such sample(s) are retained for 30 days only.  
**Attention: To check the authenticity of testing/inspection report & certificate, please contact us at telephone: (86-755) 83071443, or email: CN.Doccheck@sgs.com**

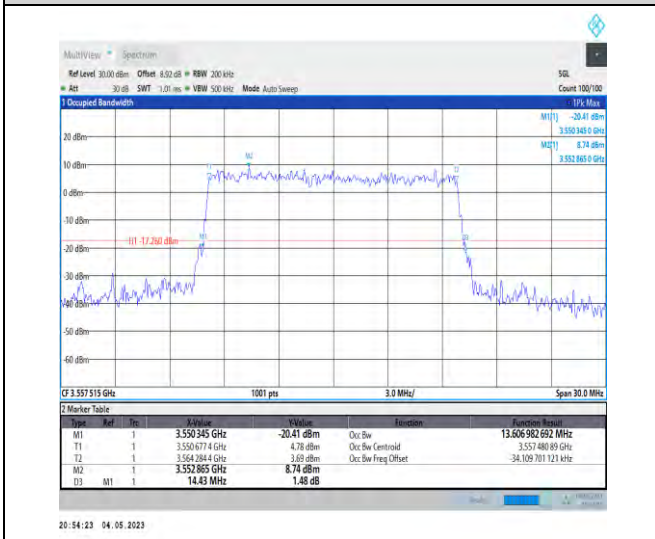
No.1 Workshop, M-10, Middle Section, Science & Technology Park, Shenzhen, China 518057 t (86-755) 26012053 f (86-755) 26710594 www.sgs.com.cn  
中国·深圳·科技园中区M-10栋一号厂房 邮编: 518057 t (86-755) 26012053 f (86-755) 26710594 sgs.china@sgs.com



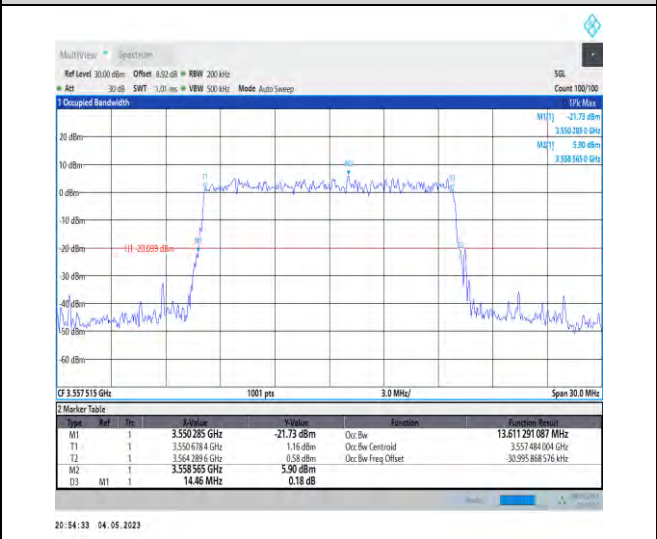
1-N48-PC3-30-15-L-6-CP-QPSK-Outer\_Full-38@0-A  
Ant1-13.59-14.970-≤15-PASS



1-N48-PC3-30-15-L-7-CP-16QAM-Outer\_Full-38@0-  
Ant1-13.55-14.280-≤15-PASS



1-N48-PC3-30-15-L-8-CP-64QAM-Outer\_Full-38@0-  
Ant1-13.607-14.430-≤15-PASS

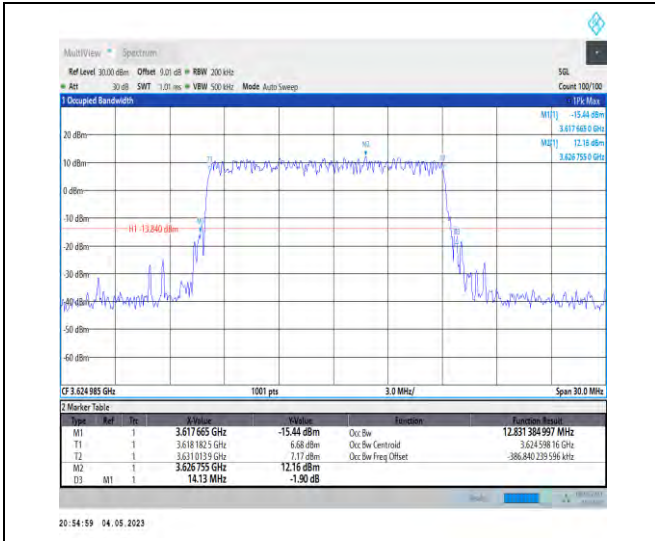


1-N48-PC3-30-15-L-9-CP-256QAM-Outer\_Full-38@0-  
Ant1-13.611-14.460-≤15-PASS

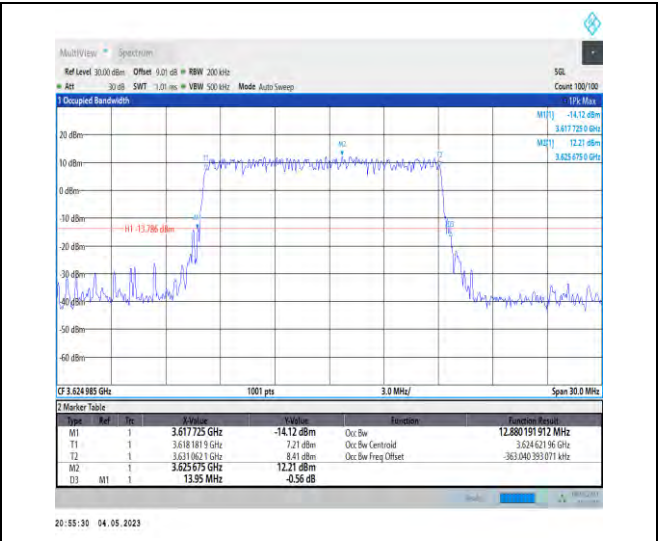


Unless otherwise agreed in writing, this document is issued by the Company subject to its General Conditions of Service printed overleaf, available on request or accessible at <http://www.sgs.com/en/Terms-and-Conditions.aspx> and, for electronic format documents, subject to Terms and Conditions for Electronic Documents at <http://www.sgs.com/en/Terms-and-Conditions/Terms-e-Documents.aspx>. Attention is drawn to the limitation of liability, indemnification and jurisdiction issues defined therein. Any holder of this document is advised that information contained hereon reflects the Company's findings at the time of its intervention only and within the limits of Client's instructions, if any. The Company's sole responsibility is to its Client and this document does not exonerate parties to a transaction from exercising all their rights and obligations under the transaction documents. This document cannot be reproduced except in full, without prior written approval of the Company. Any unauthorized alteration, forgery or falsification of the content or appearance of this document is unlawful and offenders may be prosecuted to the fullest extent of the law. Unless otherwise stated the results shown in this test report refer only to the sample(s) tested and such sample(s) are retained for 30 days only.  
**Attention: To check the authenticity of testing/inspection report & certificate, please contact us at telephone: (86-755) 83071443, or email: CN.Doccheck@sgs.com**

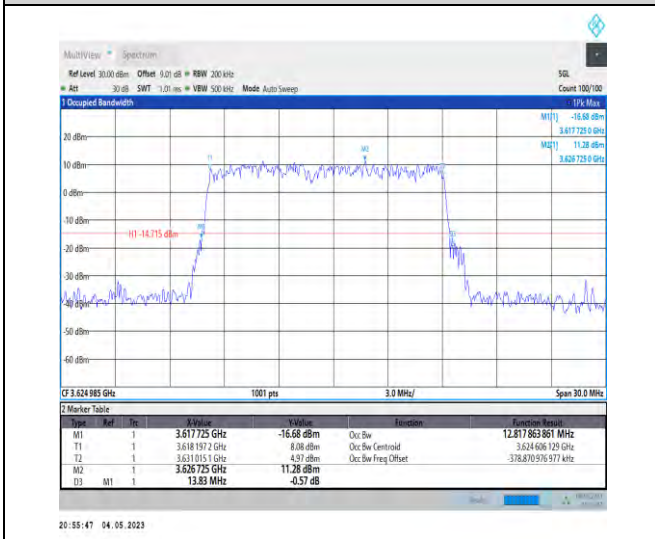
No.1 Workshop, M-10, Middle Section, Science & Technology Park, Shenzhen, China 518057 t (86-755) 26012053 f (86-755) 26710594 www.sgs.com.cn  
中国·深圳·科技园中区M-10栋一号厂房 邮编: 518057 t (86-755) 26012053 f (86-755) 26710594 sgs.china@sgs.com



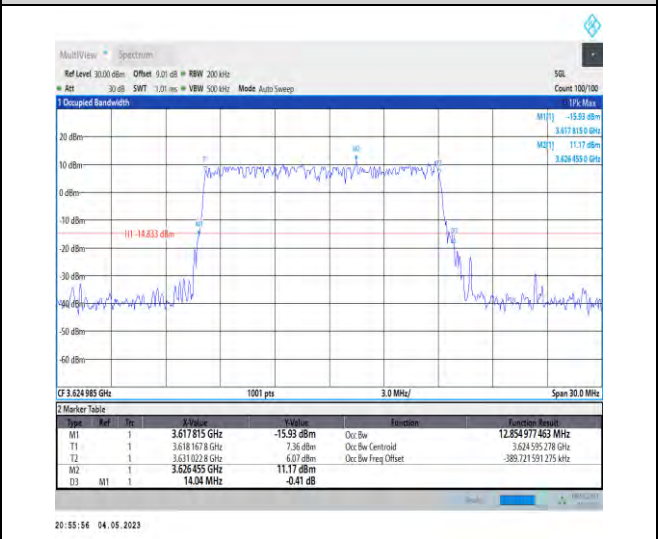
1-N48-PC3-30-15-M-1-DFT-QPSK-Outer\_Full-36@0  
-Ant1-12.831-14.130-≤15-PASS



1-N48-PC3-30-15-M-2-DFT-PI2BPSK-Outer\_Full-36@0-Ant1-12.88-13.950-≤15-PASS



1-N48-PC3-30-15-M-3-DFT-16QAM-Outer\_Full-36@0-Ant1-12.818-13.830-≤15-PASS

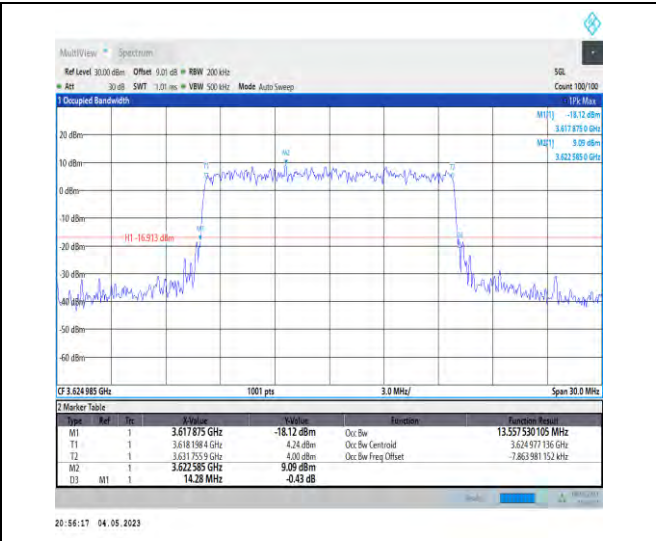


1-N48-PC3-30-15-M-4-DFT-64QAM-Outer\_Full-36@0-Ant1-12.855-14.040-≤15-PASS



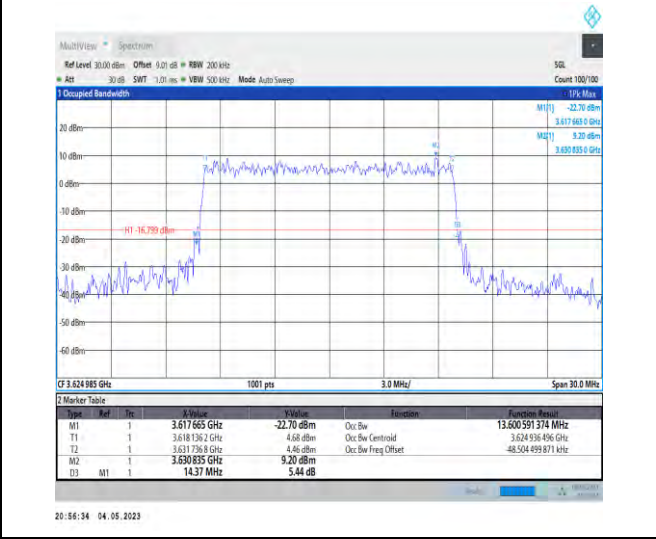
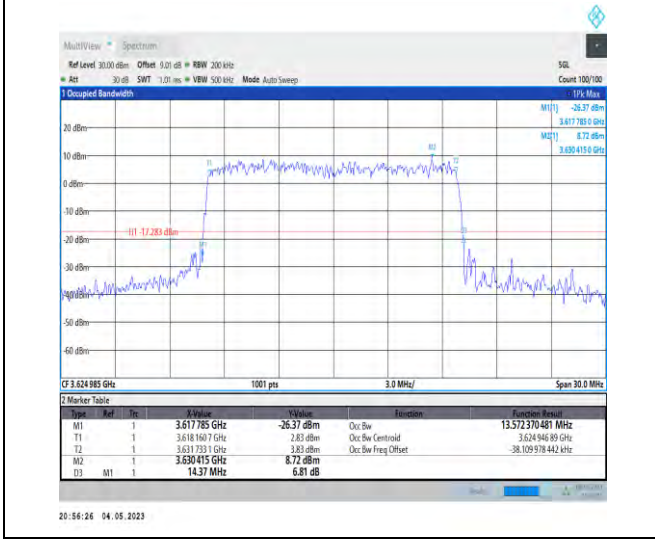
Unless otherwise agreed in writing, this document is issued by the Company subject to its General Conditions of Service printed overleaf, available on request or accessible at <http://www.sgs.com/en/Terms-and-Conditions.aspx> and, for electronic format documents, subject to Terms and Conditions for Electronic Documents at <http://www.sgs.com/en/Terms-and-Conditions/Terms-e-Documents.aspx>. Attention is drawn to the limitation of liability, indemnification and jurisdiction issues defined therein. Any holder of this document is advised that information contained hereon reflects the Company's findings at the time of its intervention only and within the limits of Client's instructions, if any. The Company's sole responsibility is to its Client and this document does not exonerate parties to a transaction from exercising all their rights and obligations under the transaction documents. This document cannot be reproduced except in full, without prior written approval of the Company. Any unauthorized alteration, forgery or falsification of the content or appearance of this document is unlawful and offenders may be prosecuted to the fullest extent of the law. Unless otherwise stated the results shown in this test report refer only to the sample(s) tested and such sample(s) are retained for 30 days only.  
**Attention: To check the authenticity of testing/inspection report & certificate, please contact us at telephone: (86-755) 83071443, or email: CN.Doccheck@sgs.com**

No. 1 Workshop, M-10, Middle Section, Science & Technology Park, Shenzhen, China 518057 t (86-755) 26012053 f (86-755) 26710594 www.sgs.com.cn  
中国·深圳·科技园中区M-10栋一号厂房 邮编: 518057 t (86-755) 26012053 f (86-755) 26710594 sgs.china@sgs.com



1-N48-PC3-30-15-M-5-DFT-256QAM-Outer\_Full-36@0-Ant1-12.807-13.770-≤15-PASS

1-N48-PC3-30-15-M-6-CP-QPSK-Outer\_Full-38@0-Ant1-13.558-14.280-≤15-PASS



1-N48-PC3-30-15-M-7-CP-16QAM-Outer\_Full-38@0-Ant1-13.572-14.370-≤15-PASS

1-N48-PC3-30-15-M-8-CP-64QAM-Outer\_Full-38@0-Ant1-13.601-14.370-≤15-PASS



Unless otherwise agreed in writing, this document is issued by the Company subject to its General Conditions of Service printed overleaf, available on request or accessible at <http://www.sgs.com/en/Terms-and-Conditions.aspx> and, for electronic format documents, subject to Terms and Conditions for Electronic Documents at <http://www.sgs.com/en/Terms-and-Conditions/Terms-e-Document.aspx>. Attention is drawn to the limitation of liability, indemnification and jurisdiction issues defined therein. Any holder of this document is advised that information contained hereon reflects the Company's findings at the time of its intervention only and within the limits of Client's instructions, if any. The Company's sole responsibility is to its Client and this document does not exonerate parties to a transaction from exercising all their rights and obligations under the transaction documents. This document cannot be reproduced except in full, without prior written approval of the Company. Any unauthorized alteration, forgery or falsification of the content or appearance of this document is unlawful and offenders may be prosecuted to the fullest extent of the law. Unless otherwise stated the results shown in this test report refer only to the sample(s) tested and such sample(s) are retained for 30 days only.

**Attention: To check the authenticity of testing/inspection report & certificate, please contact us at telephone: (86-755) 83071443, or email: CN.Doccheck@sgs.com**

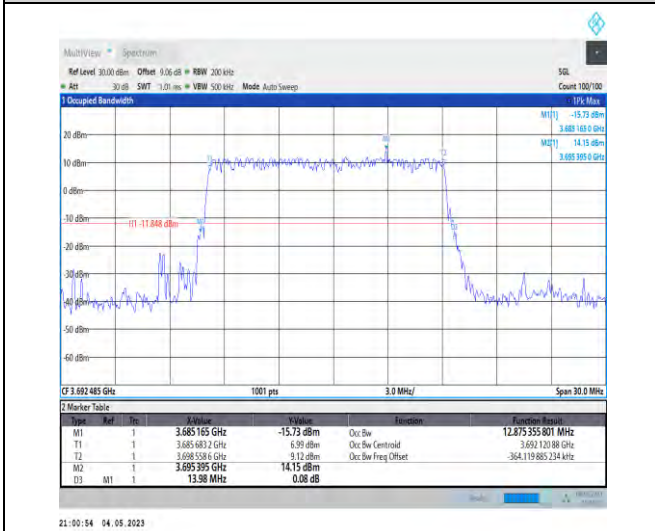
No.1 Workshop, M-10, Middle Section, Science & Technology Park, Shenzhen, China 518057 t (86-755) 26012053 f (86-755) 26710594 www.sgs.com.cn  
 中国·深圳·科技园中区M-10栋一号厂房 邮编: 518057 t (86-755) 26012053 f (86-755) 26710594 sgs.china@sgs.com



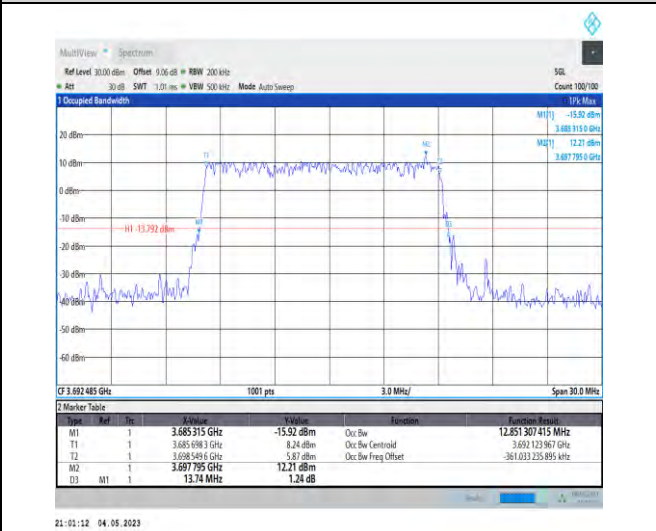
1-N48-PC3-30-15-M-9-CP-256QAM-Outer\_Full-38@  
0-Ant1-13.559-14.400-≤15-PASS



1-N48-PC3-30-15-H-1-DFT-QPSK-Outer\_Full-36@0  
-Ant1-12.884-13.980-≤15-PASS



1-N48-PC3-30-15-H-2-DFT-PI2BPSK-Outer\_Full-36  
@0-Ant1-12.875-13.980-≤15-PASS

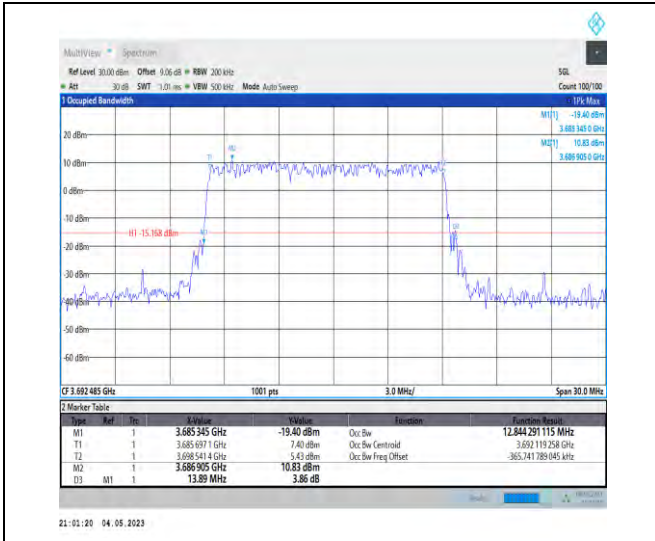


1-N48-PC3-30-15-H-3-DFT-16QAM-Outer\_Full-36@  
0-Ant1-12.851-13.740-≤15-PASS

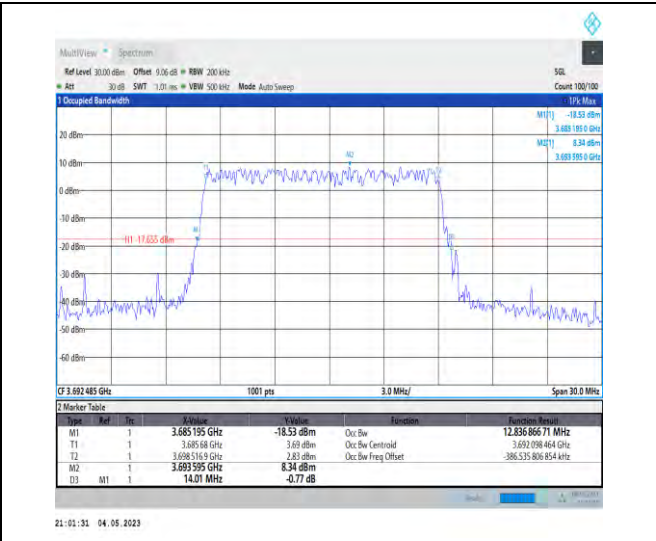


Unless otherwise agreed in writing, this document is issued by the Company subject to its General Conditions of Service printed overleaf, available on request or accessible at <http://www.sgs.com/en/Terms-and-Conditions.aspx> and, for electronic format documents, subject to Terms and Conditions for Electronic Documents at <http://www.sgs.com/en/Terms-and-Conditions/Terms-e-Documents.aspx>. Attention is drawn to the limitation of liability, indemnification and jurisdiction issues defined therein. Any holder of this document is advised that information contained hereon reflects the Company's findings at the time of its intervention only and within the limits of Client's instructions, if any. The Company's sole responsibility is to its Client and this document does not exonerate parties to a transaction from exercising all their rights and obligations under the transaction documents. This document cannot be reproduced except in full, without prior written approval of the Company. Any unauthorized alteration, forgery or falsification of the content or appearance of this document is unlawful and offenders may be prosecuted to the fullest extent of the law. Unless otherwise stated the results shown in this test report refer only to the sample(s) tested and such sample(s) are retained for 30 days only.  
**Attention: To check the authenticity of testing/inspection report & certificate, please contact us at telephone: (86-755) 83071443, or email: CN.Doccheck@sgs.com**

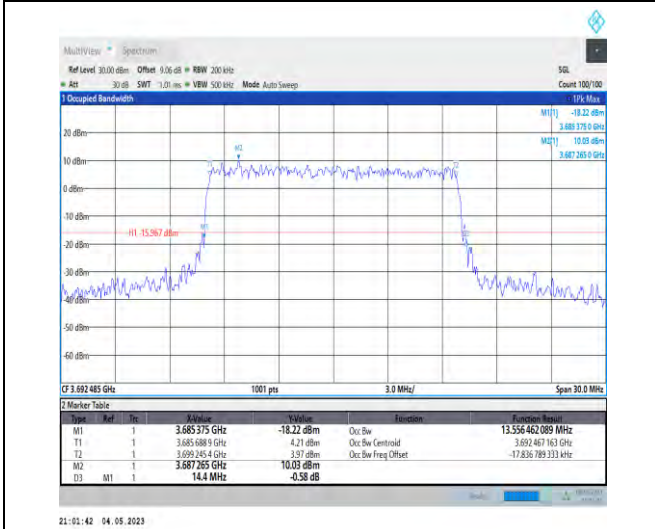
No. 1 Workshop, M-10, Middle Section, Science & Technology Park, Shenzhen, China 518057 t (86-755) 26012053 f (86-755) 26710594 www.sgs.com.cn  
中国·深圳·科技园中区M-10栋一号厂房 邮编: 518057 t (86-755) 26012053 f (86-755) 26710594 sgs.china@sgs.com



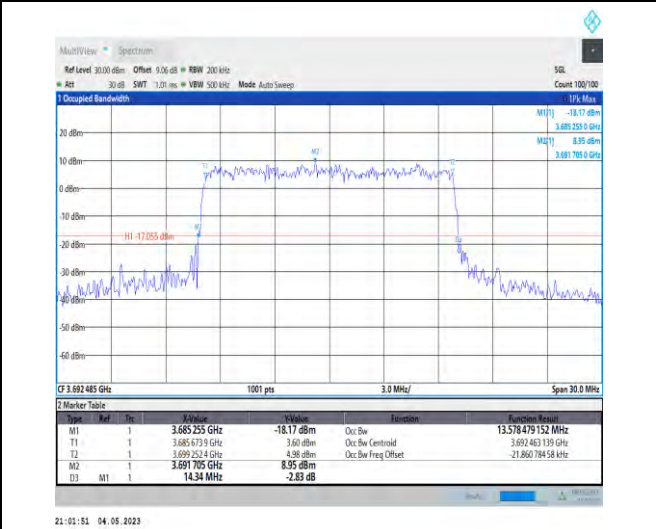
1-N48-PC3-30-15-H-4-DFT-64QAM-Outer\_Full-36@  
0-Ant1-12.844-13.890-≤15-PASS



1-N48-PC3-30-15-H-5-DFT-256QAM-Outer\_Full-36@  
0-Ant1-12.837-14.010-≤15-PASS



1-N48-PC3-30-15-H-6-CP-QPSK-Outer\_Full-38@0-  
Ant1-13.556-14.400-≤15-PASS



1-N48-PC3-30-15-H-7-CP-16QAM-Outer\_Full-38@0-  
Ant1-13.578-14.340-≤15-PASS



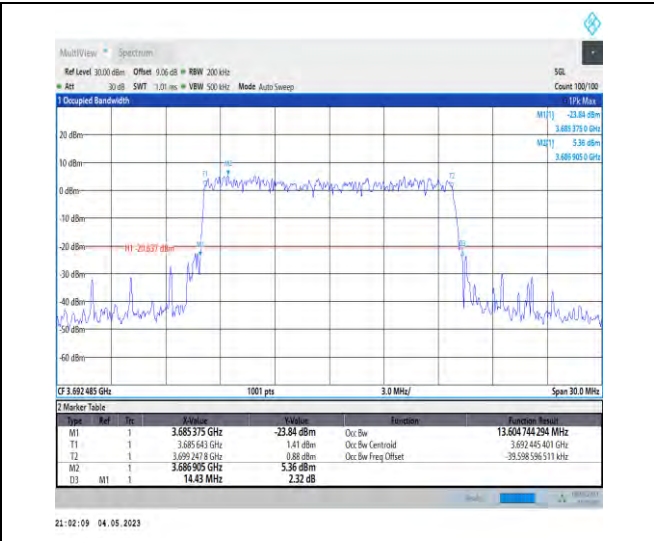
Unless otherwise agreed in writing, this document is issued by the Company subject to its General Conditions of Service printed overleaf, available on request or accessible at <http://www.sgs.com/en/Terms-and-Conditions.aspx> and, for electronic format documents, subject to Terms and Conditions for Electronic Documents at <http://www.sgs.com/en/Terms-and-Conditions/Terms-e-Documents.aspx>. Attention is drawn to the limitation of liability, indemnification and jurisdiction issues defined therein. Any holder of this document is advised that information contained hereon reflects the Company's findings at the time of its intervention only and within the limits of Client's instructions, if any. The Company's sole responsibility is to its Client and this document does not exonerate parties to a transaction from exercising all their rights and obligations under the transaction documents. This document cannot be reproduced except in full, without prior written approval of the Company. Any unauthorized alteration, forgery or falsification of the content or appearance of this document is unlawful and offenders may be prosecuted to the fullest extent of the law. Unless otherwise stated the results shown in this test report refer only to the sample(s) tested and such sample(s) are retained for 30 days only.

Attention: To check the authenticity of testing/inspection report & certificate, please contact us at telephone: (86-755) 83071443, or email: CN.Doccheck@sgs.com

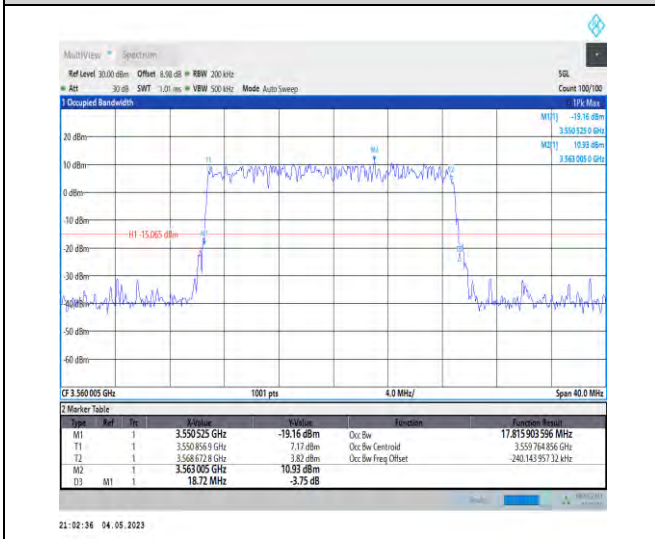
No. 1 Workshop, M-10, Middle Section, Science & Technology Park, Shenzhen, China 518057 t (86-755) 26012053 f (86-755) 26710594 www.sgs.com.cn  
中国·深圳·科技园中区M-10栋一号厂房 邮编: 518057 t (86-755) 26012053 f (86-755) 26710594 sgs.china@sgs.com



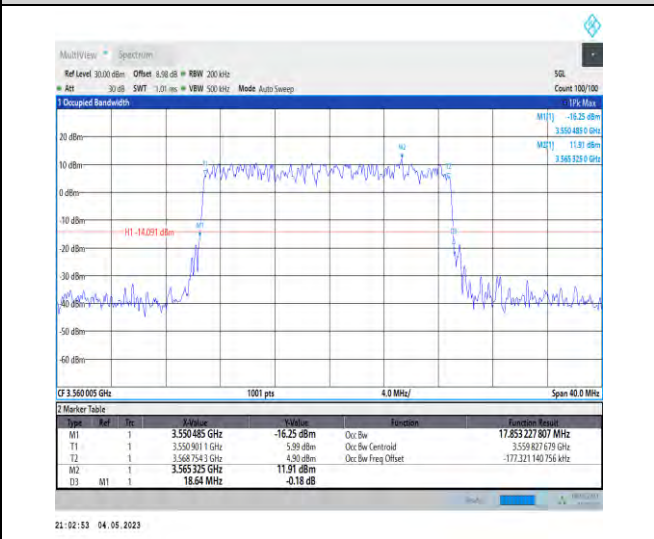
1-N48-PC3-30-15-H-8-CP-64QAM-Outer\_Full-38@0-Ant1-13.566-14.460-≤15-PASS



1-N48-PC3-30-15-H-9-CP-256QAM-Outer\_Full-38@0-Ant1-13.605-14.430-≤15-PASS



1-N48-PC3-30-20-L-1-DFT-QPSK-Outer\_Full-50@0-Ant1-17.816-18.720-≤20-PASS



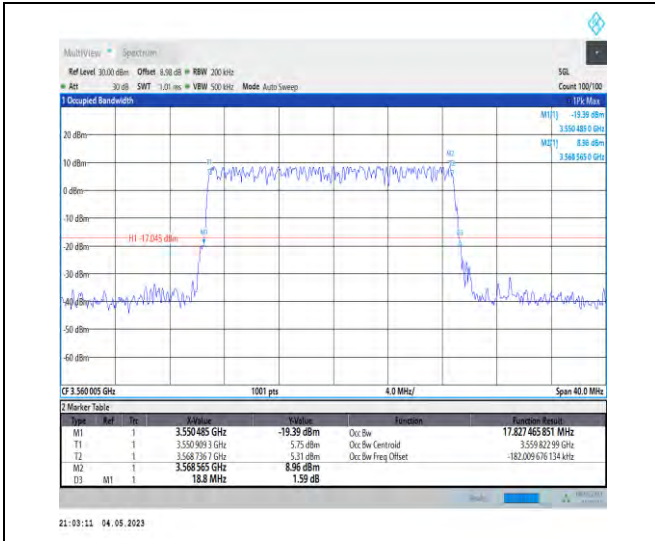
1-N48-PC3-30-20-L-2-DFT-PI2BPSK-Outer\_Full-50@0-Ant1-17.853-18.640-≤20-PASS



Unless otherwise agreed in writing, this document is issued by the Company subject to its General Conditions of Service printed overleaf, available on request or accessible at <http://www.sgs.com/en/Terms-and-Conditions.aspx> and, for electronic format documents, subject to Terms and Conditions for Electronic Documents at <http://www.sgs.com/en/Terms-and-Conditions/Terms-e-Documents.aspx>. Attention is drawn to the limitation of liability, indemnification and jurisdiction issues defined therein. Any holder of this document is advised that information contained hereon reflects the Company's findings at the time of its intervention only and within the limits of Client's instructions, if any. The Company's sole responsibility is to its Client and this document does not exonerate parties to a transaction from exercising all their rights and obligations under the transaction documents. This document cannot be reproduced except in full, without prior written approval of the Company. Any unauthorized alteration, forgery or falsification of the content or appearance of this document is unlawful and offenders may be prosecuted to the fullest extent of the law. Unless otherwise stated the results shown in this test report refer only to the sample(s) tested and such sample(s) are retained for 30 days only.  
**Attention: To check the authenticity of testing/inspection report & certificate, please contact us at telephone: (86-755) 8307 1443, or email: CN.Doccheck@sgs.com**

No. 1 Workshop, M-10, Middle Section, Science & Technology Park, Shenzhen, China 518057 t (86-755) 26012053 f (86-755) 26710594 www.sgs.com.cn  
中国·深圳·科技园中区M-10栋一号厂房 邮编: 518057 t (86-755) 26012053 f (86-755) 26710594 sgs.china@sgs.com

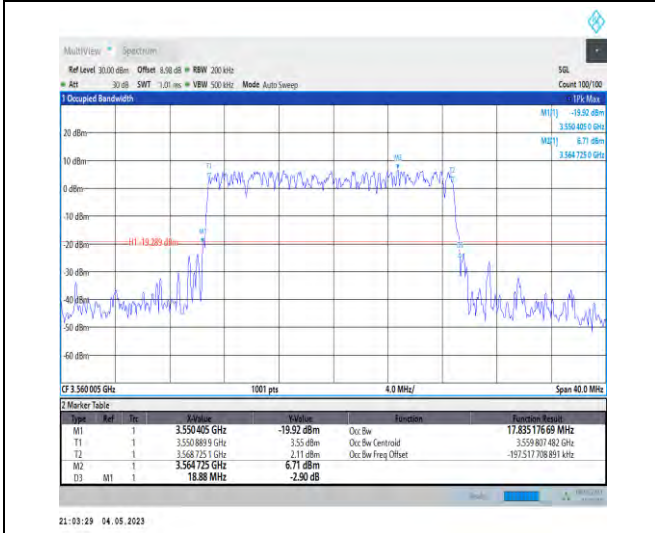




1-N48-PC3-30-20-L-3-DFT-16QAM-Outer\_Full-50@  
0-Ant1-17.827-18.800-<=20-PASS



1-N48-PC3-30-20-L-4-DFT-64QAM-Outer\_Full-50@  
0-Ant1-17.879-19.000-<=20-PASS



1-N48-PC3-30-20-L-5-DFT-256QAM-Outer\_Full-50  
@0-Ant1-17.835-18.880-<=20-PASS



1-N48-PC3-30-20-L-6-CP-QPSK-Outer\_Full-51@0-  
Ant1-18.22-19.200-<=20-PASS



Unless otherwise agreed in writing, this document is issued by the Company subject to its General Conditions of Service printed overleaf, available on request or accessible at <http://www.sgs.com/en/Terms-and-Conditions.aspx> and, for electronic format documents, subject to Terms and Conditions for Electronic Documents at <http://www.sgs.com/en/Terms-and-Conditions/Terms-e-Documents.aspx>. Attention is drawn to the limitation of liability, indemnification and jurisdiction issues defined therein. Any holder of this document is advised that information contained hereon reflects the Company's findings at the time of its intervention only and within the limits of Client's instructions, if any. The Company's sole responsibility is to its Client and this document does not exonerate parties to a transaction from exercising all their rights and obligations under the transaction documents. This document cannot be reproduced except in full, without prior written approval of the Company. Any unauthorized alteration, forgery or falsification of the content or appearance of this document is unlawful and offenders may be prosecuted to the fullest extent of the law. Unless otherwise stated the results shown in this test report refer only to the sample(s) tested and such sample(s) are retained for 30 days only.  
**Attention: To check the authenticity of testing/inspection report & certificate, please contact us at telephone: (86-755) 83071443, or email: CN.Doccheck@sgs.com**

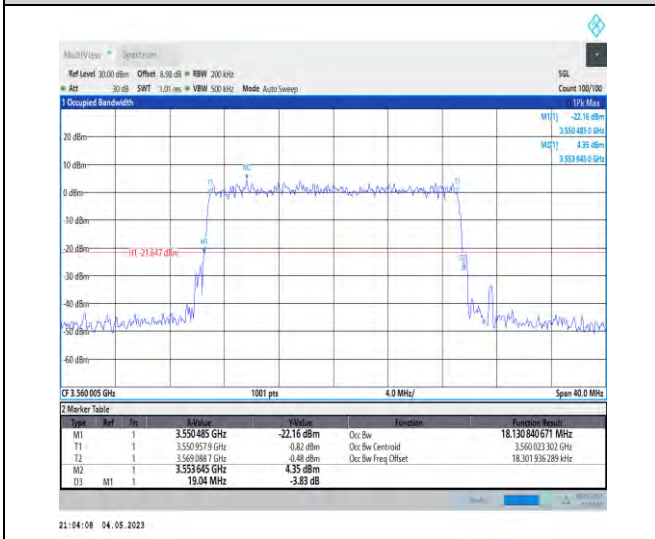
No.1 Workshop, M-10, Middle Section, Science & Technology Park, Shenzhen, China 518057 t (86-755) 26012053 f (86-755) 26710594 www.sgs.com.cn  
中国·深圳·科技园中区M-10栋一厂房 邮编: 518057 t (86-755) 26012053 f (86-755) 26710594 sgs.china@sgs.com



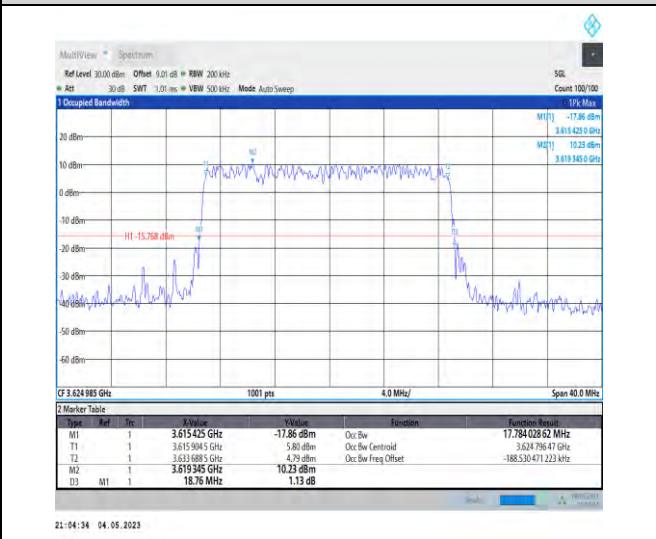
1-N48-PC3-30-20-L-7-CP-16QAM-Outer\_Full-51@0-Ant1-18.132-19.400-<20-PASS



1-N48-PC3-30-20-L-8-CP-64QAM-Outer\_Full-51@0-Ant1-18.235-19.360-<20-PASS



1-N48-PC3-30-20-L-9-CP-256QAM-Outer\_Full-51@0-Ant1-18.131-19.040-<20-PASS

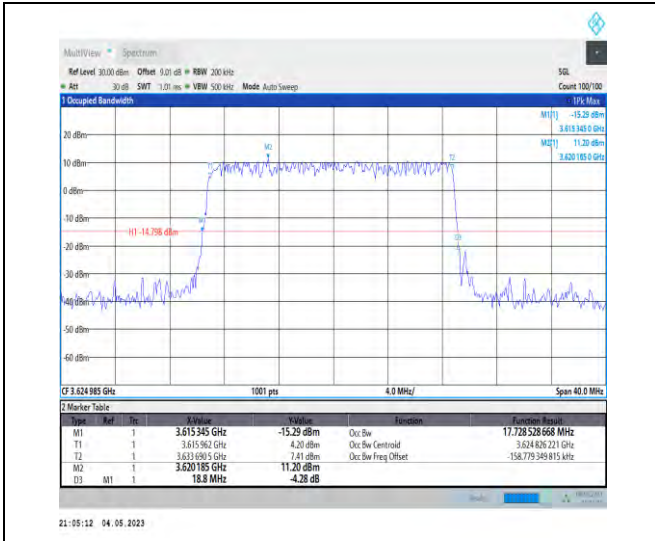


1-N48-PC3-30-20-M-1-DFT-QPSK-Outer\_Full-50@0-Ant1-17.784-18.760-<20-PASS

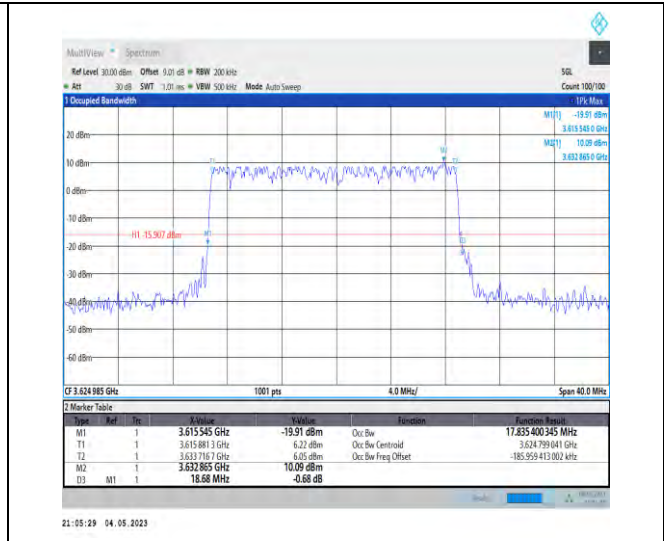


Unless otherwise agreed in writing, this document is issued by the Company subject to its General Conditions of Service printed overleaf, available on request or accessible at <http://www.sgs.com/en/Terms-and-Conditions.aspx> and, for electronic format documents, subject to Terms and Conditions for Electronic Documents at <http://www.sgs.com/en/Terms-and-Conditions/Terms-e-Documents.aspx>. Attention is drawn to the limitation of liability, indemnification and jurisdiction issues defined therein. Any holder of this document is advised that information contained hereon reflects the Company's findings at the time of its intervention only and within the limits of Client's instructions, if any. The Company's sole responsibility is to its Client and this document does not exonerate parties to a transaction from exercising all their rights and obligations under the transaction documents. This document cannot be reproduced except in full, without prior written approval of the Company. Any unauthorized alteration, forgery or falsification of the content or appearance of this document is unlawful and offenders may be prosecuted to the fullest extent of the law. Unless otherwise stated the results shown in this test report refer only to the sample(s) tested and such sample(s) are retained for 30 days only.

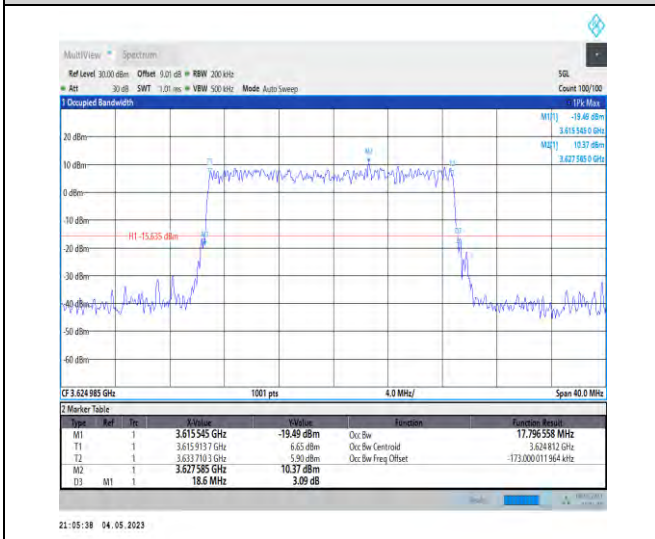
**Attention: To check the authenticity of testing/inspection report & certificate, please contact us at telephone: (86-755) 83071443, or email: CN.Doccheck@sgs.com**



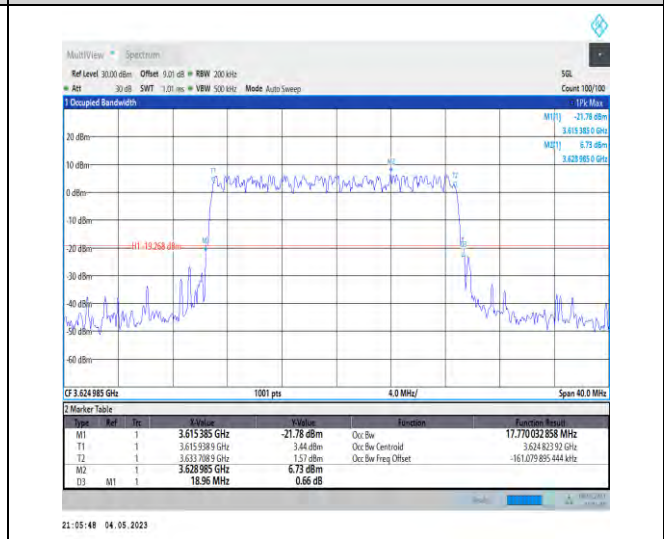
1-N48-PC3-30-20-M-2-DFT-PI2BPSK-Outer\_Full-50 @0-Ant1-17.729-18.800-≤20-PASS



1-N48-PC3-30-20-M-3-DFT-16QAM-Outer\_Full-50 @0-Ant1-17.835-18.680-≤20-PASS

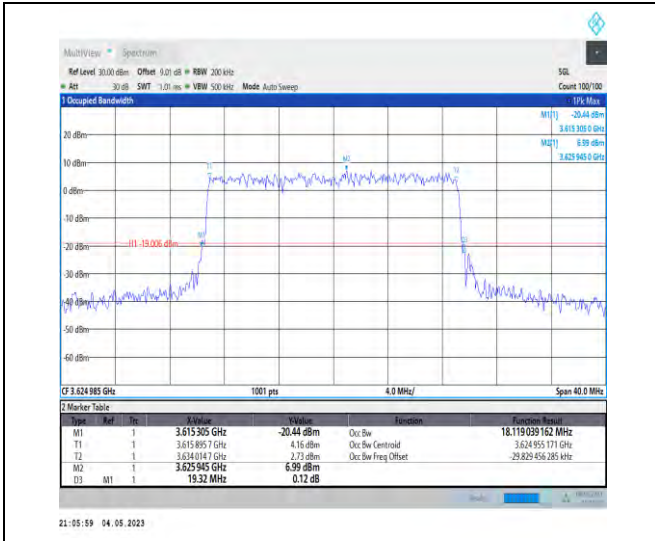


1-N48-PC3-30-20-M-4-DFT-64QAM-Outer\_Full-50 @0-Ant1-17.797-18.600-≤20-PASS



1-N48-PC3-30-20-M-5-DFT-256QAM-Outer\_Full-50 @0-Ant1-17.77-18.960-≤20-PASS

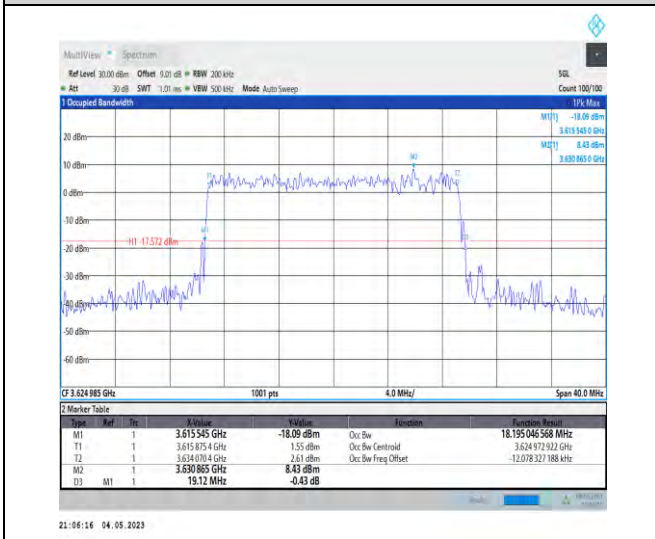




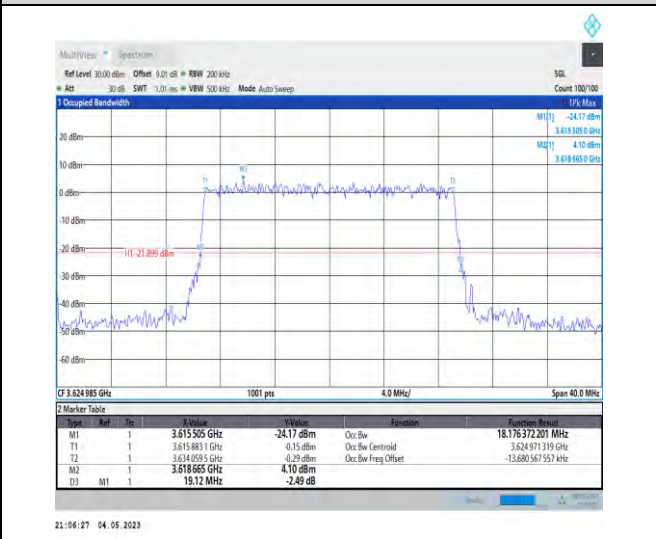
1-N48-PC3-30-20-M-6-CP-QPSK-Outer\_Full-51@0-Ant1-18.119-19.320-<=20-PASS



1-N48-PC3-30-20-M-7-CP-16QAM-Outer\_Full-51@0-Ant1-18.201-19.080-<=20-PASS



1-N48-PC3-30-20-M-8-CP-64QAM-Outer\_Full-51@0-Ant1-18.195-19.120-<=20-PASS

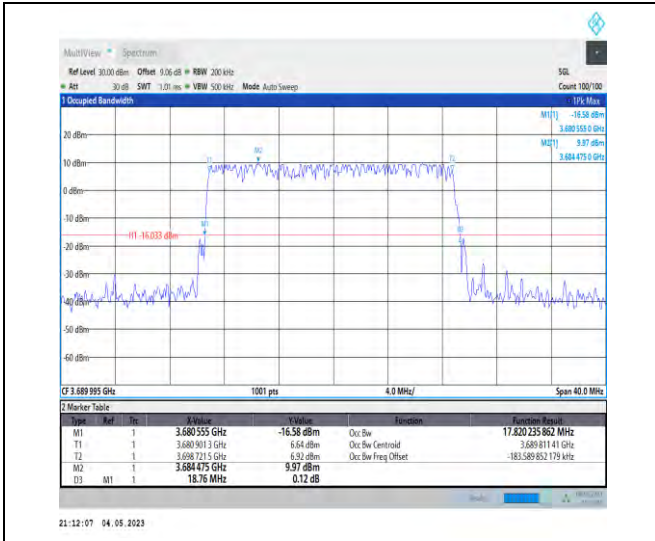


1-N48-PC3-30-20-M-9-CP-256QAM-Outer\_Full-51@0-Ant1-18.176-19.120-<=20-PASS

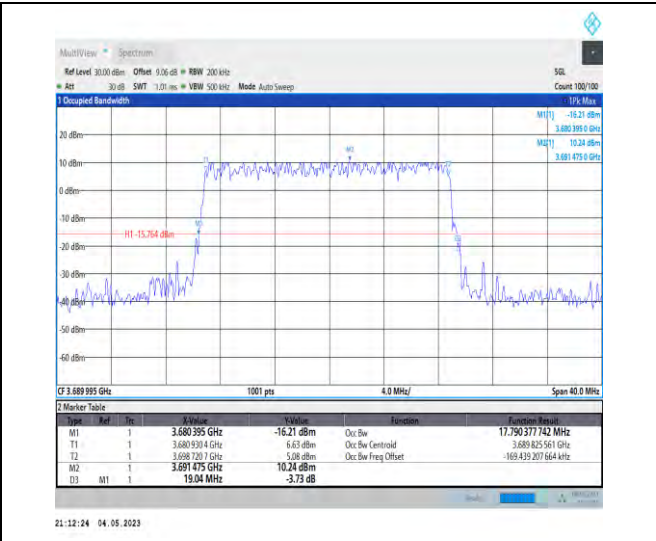


Unless otherwise agreed in writing, this document is issued by the Company subject to its General Conditions of Service printed overleaf, available on request or accessible at <http://www.sgs.com/en/Terms-and-Conditions.aspx> and, for electronic format documents, subject to Terms and Conditions for Electronic Documents at <http://www.sgs.com/en/Terms-and-Conditions/Terms-e-Documents.aspx>. Attention is drawn to the limitation of liability, indemnification and jurisdiction issues defined therein. Any holder of this document is advised that information contained hereon reflects the Company's findings at the time of its intervention only and within the limits of Client's instructions, if any. The Company's sole responsibility is to its Client and this document does not exonerate parties to a transaction from exercising all their rights and obligations under the transaction documents. This document cannot be reproduced except in full, without prior written approval of the Company. Any unauthorized alteration, forgery or falsification of the content or appearance of this document is unlawful and offenders may be prosecuted to the fullest extent of the law. Unless otherwise stated the results shown in this test report refer only to the sample(s) tested and such sample(s) are retained for 30 days only.  
**Attention: To check the authenticity of testing/inspection report & certificate, please contact us at telephone: (86-755) 83071443, or email: CN.Doccheck@sgs.com**

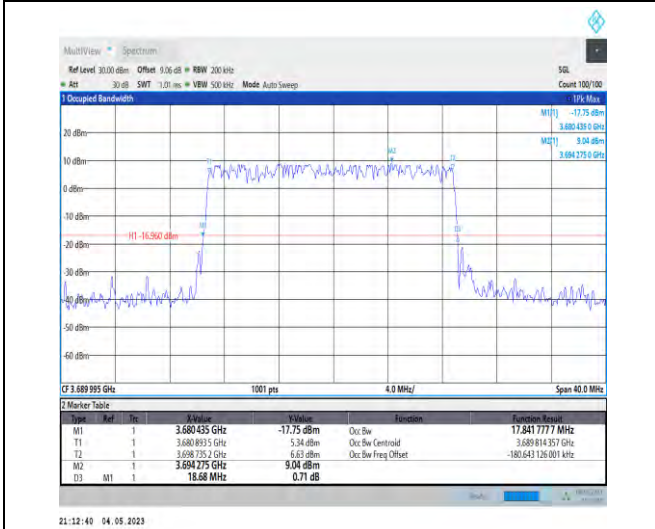
No.1 Workshop, M-10, Middle Section, Science & Technology Park, Shenzhen, China 518057 t (86-755) 26012053 f (86-755) 26710594 www.sgs.com.cn  
中国·深圳·科技园中区M-10栋一号厂房 邮编: 518057 t (86-755) 26012053 f (86-755) 26710594 sgs.china@sgs.com



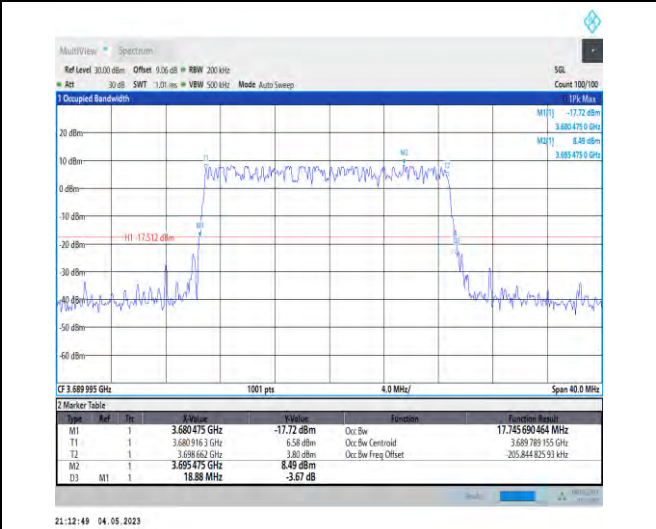
1-N48-PC3-30-20-H-1-DFT-QPSK-Outer\_Full-50@0-Ant1-17.82-18.760-≤20-PASS



1-N48-PC3-30-20-H-2-DFT-PI2BPSK-Outer\_Full-50@0-Ant1-17.79-19.040-≤20-PASS



1-N48-PC3-30-20-H-3-DFT-16QAM-Outer\_Full-50@0-Ant1-17.842-18.680-≤20-PASS



1-N48-PC3-30-20-H-4-DFT-64QAM-Outer\_Full-50@0-Ant1-17.746-18.880-≤20-PASS



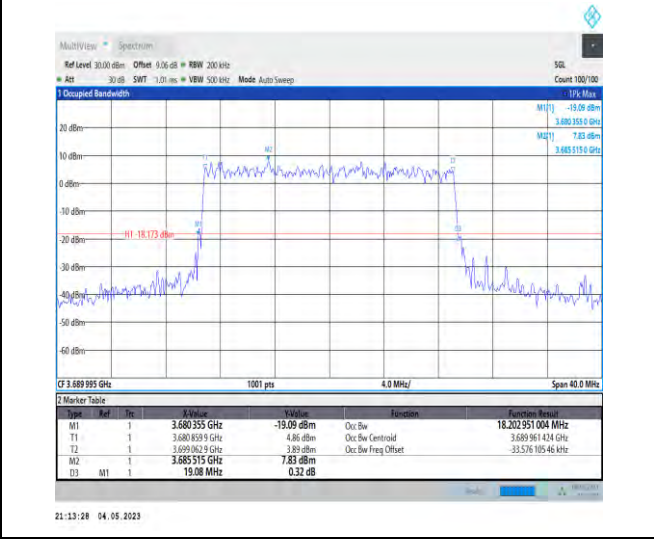
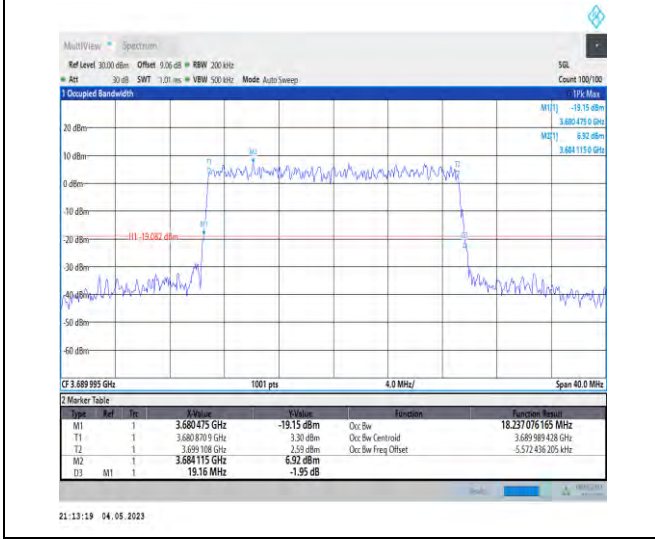
Unless otherwise agreed in writing, this document is issued by the Company subject to its General Conditions of Service printed overleaf, available on request or accessible at <http://www.sgs.com/en/Terms-and-Conditions.aspx> and, for electronic format documents, subject to Terms and Conditions for Electronic Documents at <http://www.sgs.com/en/Terms-and-Conditions/Terms-e-Document.aspx>. Attention is drawn to the limitation of liability, indemnification and jurisdiction issues defined therein. Any holder of this document is advised that information contained hereon reflects the Company's findings at the time of its intervention only and within the limits of Client's instructions, if any. The Company's sole responsibility is to its Client and this document does not exonerate parties to a transaction from exercising all their rights and obligations under the transaction documents. This document cannot be reproduced except in full, without prior written approval of the Company. Any unauthorized alteration, forgery or falsification of the content or appearance of this document is unlawful and offenders may be prosecuted to the fullest extent of the law. Unless otherwise stated the results shown in this test report refer only to the sample(s) tested and such sample(s) are retained for 30 days only.  
**Attention: To check the authenticity of testing/inspection report & certificate, please contact us at telephone: (86-755) 83071443, or email: CN.Doccheck@sgs.com**

No.1 Workshop, M-10, Middle Section, Science & Technology Park, Shenzhen, China 518057 t (86-755) 26012053 f (86-755) 26710594 www.sgs.com.cn  
中国·深圳·科技园中区M-10栋一号厂房 邮编: 518057 t (86-755) 26012053 f (86-755) 26710594 sgs.china@sgs.com



1-N48-PC3-30-20-H-5-DFT-256QAM-Outer\_Full-50 @0-Ant1-17.793-19.080-≤20-PASS

1-N48-PC3-30-20-H-6-CP-QPSK-Outer\_Full-51@0-Ant1-18.185-19.280-≤20-PASS



1-N48-PC3-30-20-H-7-CP-16QAM-Outer\_Full-51@0-Ant1-18.237-19.160-≤20-PASS

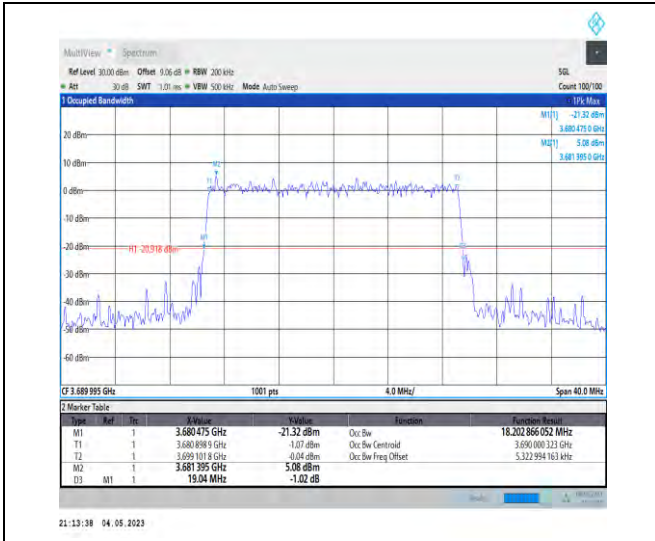
1-N48-PC3-30-20-H-8-CP-64QAM-Outer\_Full-51@0-Ant1-18.203-19.080-≤20-PASS



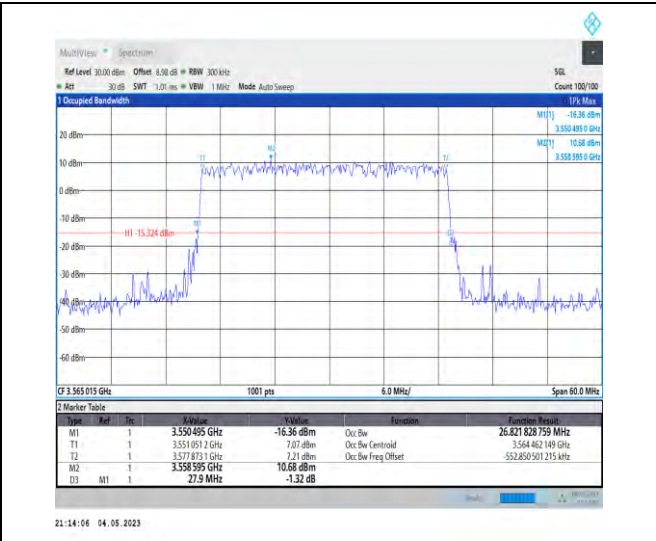
Unless otherwise agreed in writing, this document is issued by the Company subject to its General Conditions of Service printed overleaf, available on request or accessible at <http://www.sgs.com/en/Terms-and-Conditions.aspx> and, for electronic format documents, subject to Terms and Conditions for Electronic Documents at <http://www.sgs.com/en/Terms-and-Conditions/Terms-e-Documents.aspx>. Attention is drawn to the limitation of liability, indemnification and jurisdiction issues defined therein. Any holder of this document is advised that information contained hereon reflects the Company's findings at the time of its intervention only and within the limits of Client's instructions, if any. The Company's sole responsibility is to its Client and this document does not exonerate parties to a transaction from exercising all their rights and obligations under the transaction documents. This document cannot be reproduced except in full, without prior written approval of the Company. Any unauthorized alteration, forgery or falsification of the content or appearance of this document is unlawful and offenders may be prosecuted to the fullest extent of the law. Unless otherwise stated the results shown in this test report refer only to the sample(s) tested and such sample(s) are retained for 30 days only.

**Attention: To check the authenticity of testing/inspection report & certificate, please contact us at telephone: (86-755) 83071443, or email: CN.Doccheck@sgs.com**

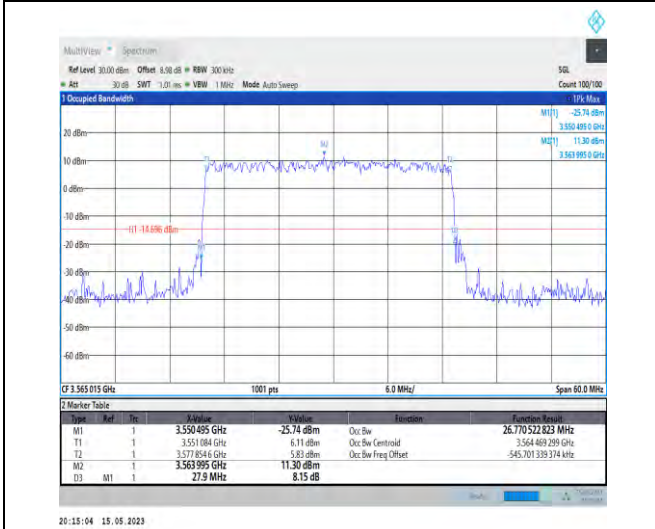
No.1 Workshop, M-10, Middle Section, Science & Technology Park, Shenzhen, China 518057 t (86-755) 26012053 f (86-755) 26710594 www.sgs.com.cn  
中国·深圳·科技园中区M-10栋一号厂房 邮编: 518057 t (86-755) 26012053 f (86-755) 26710594 sgs.china@sgs.com



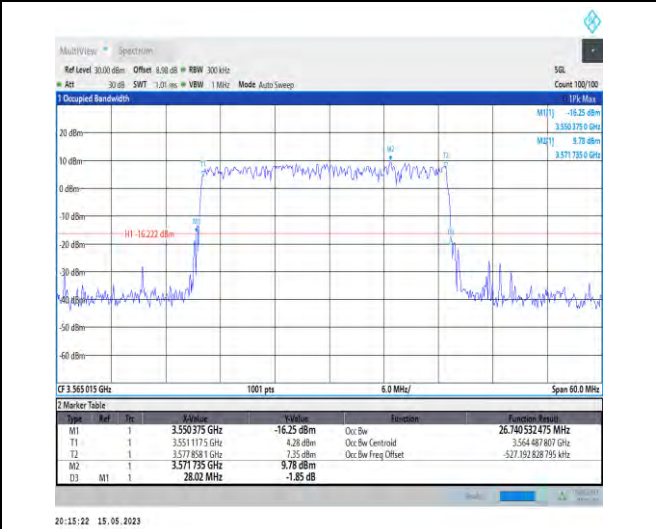
1-N48-PC3-30-20-H-9-CP-256QAM-Outer\_Full-51@  
0-Ant1-18.203-19.040-≤20-PASS



1-N48-PC3-30-30-L-1-DFT-QPSK-Outer\_Full-75@0-  
Ant1-26.822-27.900-≤30-PASS



1-N48-PC3-30-30-L-2-DFT-PI2BPSK-Outer\_Full-75  
@0-Ant1-26.770-27.900-≤30-PASS

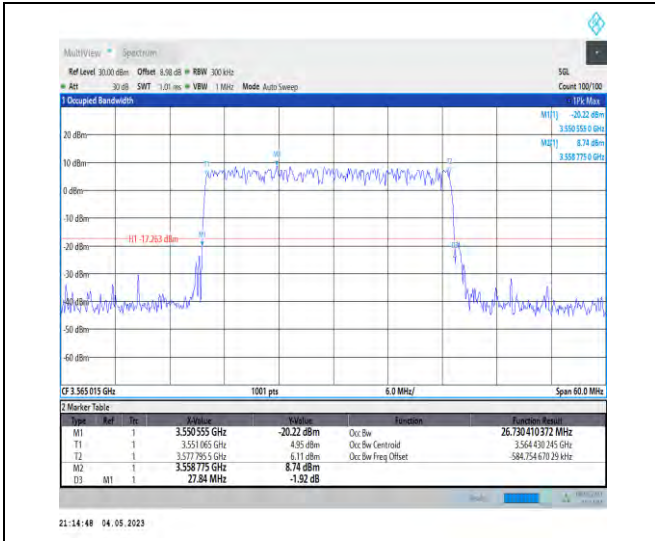


1-N48-PC3-30-30-L-3-DFT-16QAM-Outer\_Full-75@  
0-Ant1-26.740-28.020-≤30-PASS



Unless otherwise agreed in writing, this document is issued by the Company subject to its General Conditions of Service printed overleaf, available on request or accessible at <http://www.sgs.com/en/Terms-and-Conditions.aspx> and, for electronic format documents, subject to Terms and Conditions for Electronic Documents at <http://www.sgs.com/en/Terms-and-Conditions/Terms-e-Documents.aspx>. Attention is drawn to the limitation of liability, indemnification and jurisdiction issues defined therein. Any holder of this document is advised that information contained hereon reflects the Company's findings at the time of its intervention only and within the limits of Client's instructions, if any. The Company's sole responsibility is to its Client and this document does not exonerate parties to a transaction from exercising all their rights and obligations under the transaction documents. This document cannot be reproduced except in full, without prior written approval of the Company. Any unauthorized alteration, forgery or falsification of the content or appearance of this document is unlawful and offenders may be prosecuted to the fullest extent of the law. Unless otherwise stated the results shown in this test report refer only to the sample(s) tested and such sample(s) are retained for 30 days only.  
**Attention: To check the authenticity of testing/inspection report & certificate, please contact us at telephone: (86-755) 83071443, or email: CN.Doccheck@sgs.com**

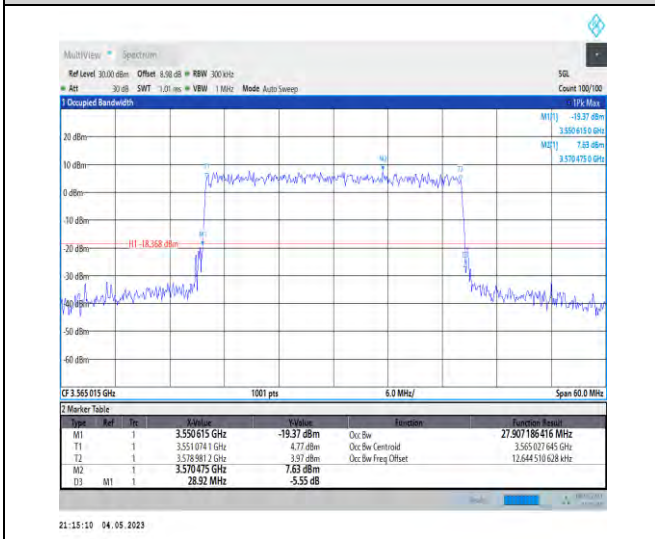
No.1 Workshop, M-10, Middle Section, Science & Technology Park, Shenzhen, China 518057 t (86-755) 26012053 f (86-755) 26710594 www.sgs.com.cn  
中国·深圳·科技园中区M-10栋一号厂房 邮编: 518057 t (86-755) 26012053 f (86-755) 26710594 sgs.china@sgs.com



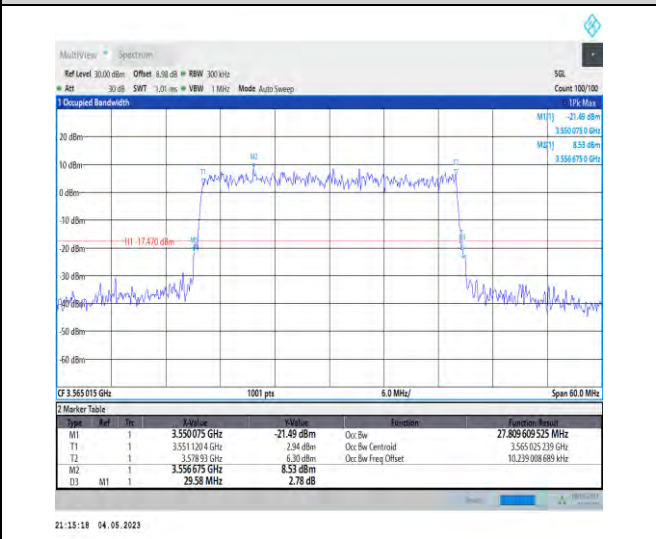
1-N48-PC3-30-30-L-4-DFT-64QAM-Outer\_Full-75@0-Ant1-26.73-27.840-≤30-PASS



1-N48-PC3-30-30-L-5-DFT-256QAM-Outer\_Full-75@0-Ant1-26.741-28.320-≤30-PASS



1-N48-PC3-30-30-L-6-CP-QPSK-Outer\_Full-78@0-Ant1-27.907-28.920-≤30-PASS



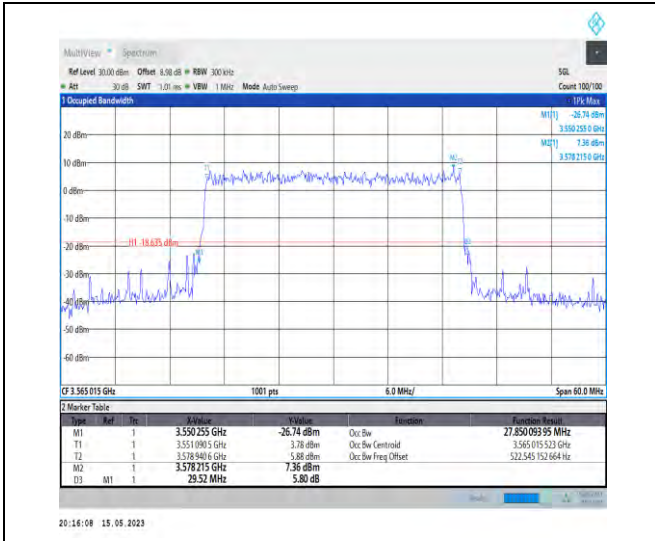
1-N48-PC3-30-30-L-7-CP-16QAM-Outer\_Full-78@0-Ant1-27.81-29.580-≤30-PASS



Unless otherwise agreed in writing, this document is issued by the Company subject to its General Conditions of Service printed overleaf, available on request or accessible at <http://www.sgs.com/en/Terms-and-Conditions.aspx> and, for electronic format documents, subject to Terms and Conditions for Electronic Documents at <http://www.sgs.com/en/Terms-and-Conditions/Terms-e-Documents.aspx>. Attention is drawn to the limitation of liability, indemnification and jurisdiction issues defined therein. Any holder of this document is advised that information contained hereon reflects the Company's findings at the time of its intervention only and within the limits of Client's instructions, if any. The Company's sole responsibility is to its Client and this document does not exonerate parties to a transaction from exercising all their rights and obligations under the transaction documents. This document cannot be reproduced except in full, without prior written approval of the Company. Any unauthorized alteration, forgery or falsification of the content or appearance of this document is unlawful and offenders may be prosecuted to the fullest extent of the law. Unless otherwise stated the results shown in this test report refer only to the sample(s) tested and such sample(s) are retained for 30 days only.  
**Attention: To check the authenticity of testing/inspection report & certificate, please contact us at telephone: (86-755) 83071443, or email: CN.Doccheck@sgs.com**

No.1 Workshop, M-10, Middle Section, Science & Technology Park, Shenzhen, China 518057 t (86-755) 26012053 f (86-755) 26710594 www.sgs.com.cn  
中国·深圳·科技园中区M-10栋一号厂房 邮编: 518057 t (86-755) 26012053 f (86-755) 26710594 sgs.china@sgs.com

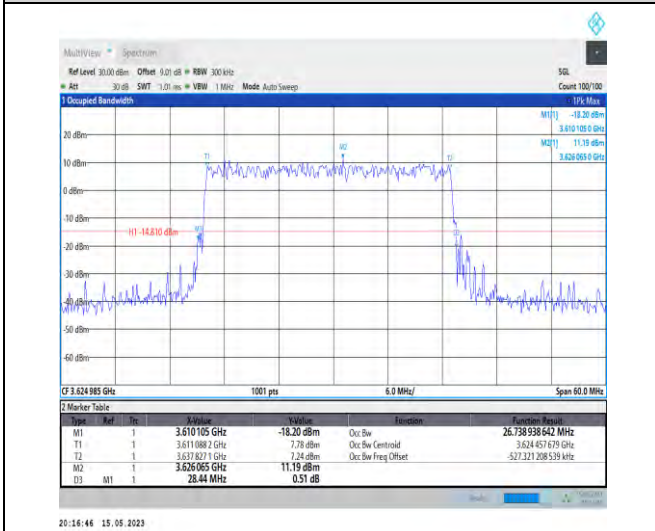




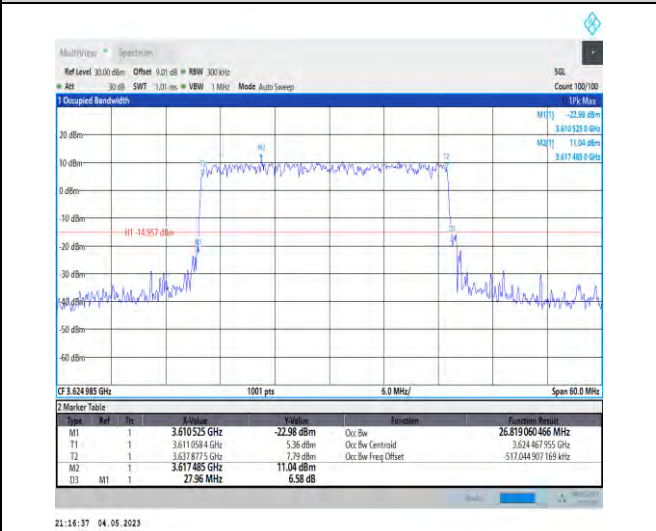
1-N48-PC3-30-30-L-8-CP-64QAM-Outer\_Full-78@0-Ant1-27.850-29.520-<math>\leq 30</math>-PASS



1-N48-PC3-30-30-L-9-CP-256QAM-Outer\_Full-78@0-Ant1-27.827-29.460-<math>\leq 30</math>-PASS



1-N48-PC3-30-30-M-1-DFT-QPSK-Outer\_Full-75@0-Ant1-26.739-28.440-<math>\leq 30</math>-PASS

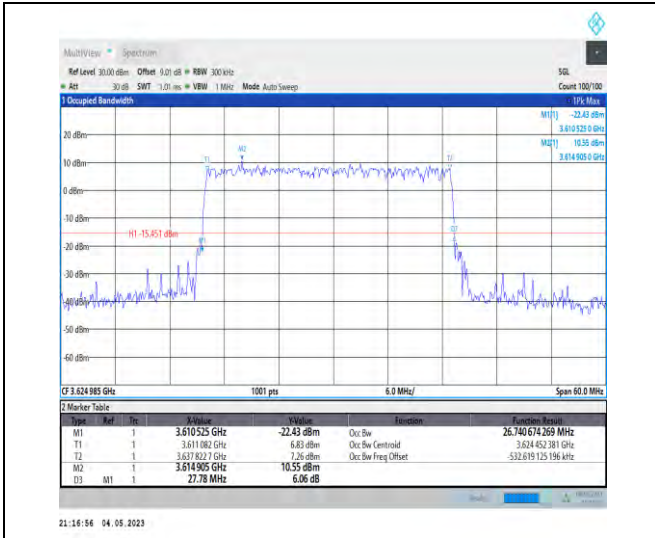


1-N48-PC3-30-30-M-2-DFT-PI2BPSK-Outer\_Full-75@0-Ant1-26.819-27.960-<math>\leq 30</math>-PASS

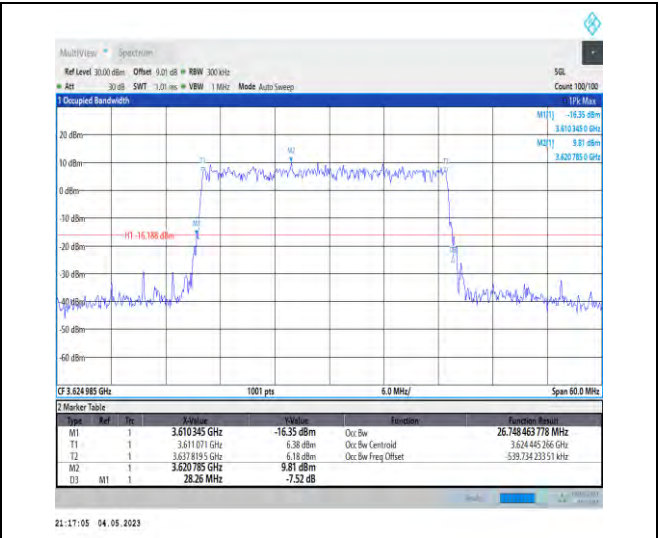


Unless otherwise agreed in writing, this document is issued by the Company subject to its General Conditions of Service printed overleaf, available on request or accessible at <http://www.sgs.com/en/Terms-and-Conditions.aspx> and, for electronic format documents, subject to Terms and Conditions for Electronic Documents at <http://www.sgs.com/en/Terms-and-Conditions/Terms-e-Documents.aspx>. Attention is drawn to the limitation of liability, indemnification and jurisdiction issues defined therein. Any holder of this document is advised that information contained hereon reflects the Company's findings at the time of its intervention only and within the limits of Client's instructions, if any. The Company's sole responsibility is to its Client and this document does not exonerate parties to a transaction from exercising all their rights and obligations under the transaction documents. This document cannot be reproduced except in full, without prior written approval of the Company. Any unauthorized alteration, forgery or falsification of the content or appearance of this document is unlawful and offenders may be prosecuted to the fullest extent of the law. Unless otherwise stated the results shown in this test report refer only to the sample(s) tested and such sample(s) are retained for 30 days only.  
**Attention: To check the authenticity of testing/inspection report & certificate, please contact us at telephone: (86-755) 83071443, or email: CN.Doccheck@sgs.com**

No. 1 Workshop, M-10, Middle Section, Science & Technology Park, Shenzhen, China 518057 t (86-755) 26012053 f (86-755) 26710594 www.sgs.com.cn  
中国·深圳·科技园中区M-10栋一号厂房 邮编: 518057 t (86-755) 26012053 f (86-755) 26710594 sgs.china@sgs.com



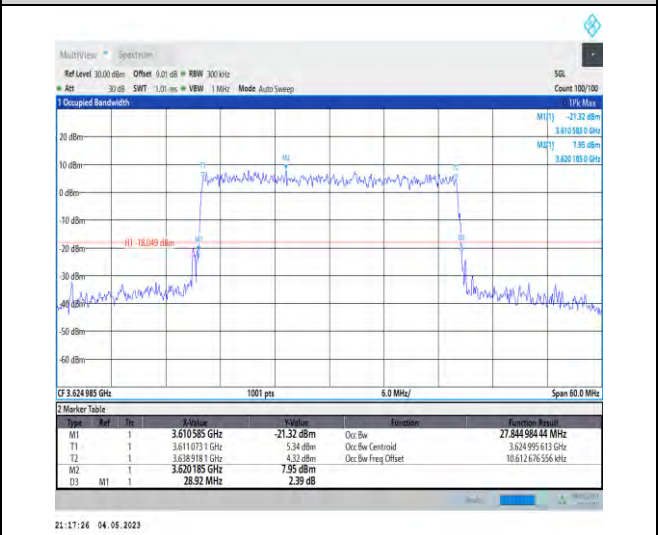
1-N48-PC3-30-30-M-3-DFT-16QAM-Outer\_Full-75@  
0-Ant1-26.741-27.780-≤30-PASS



1-N48-PC3-30-30-M-4-DFT-64QAM-Outer\_Full-75@  
0-Ant1-26.748-28.260-≤30-PASS



1-N48-PC3-30-30-M-5-DFT-256QAM-Outer\_Full-75  
@0-Ant1-26.736-28.320-≤30-PASS

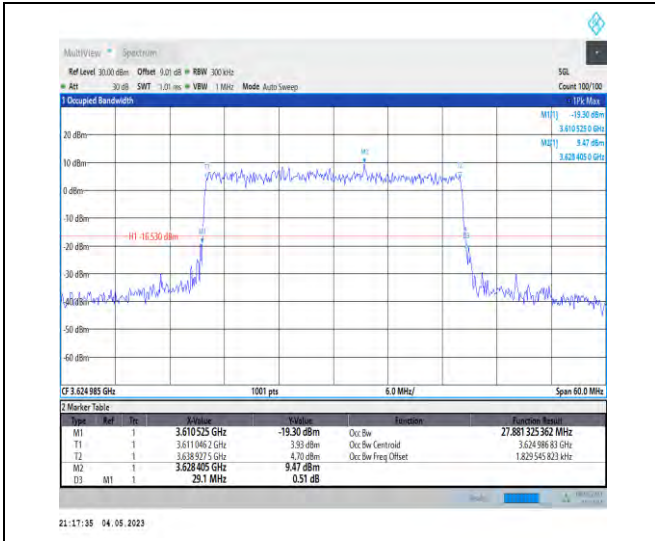


1-N48-PC3-30-30-M-6-CP-QPSK-Outer\_Full-78@0-  
Ant1-27.845-28.920-≤30-PASS



Unless otherwise agreed in writing, this document is issued by the Company subject to its General Conditions of Service printed overleaf, available on request or accessible at <http://www.sgs.com/en/Terms-and-Conditions.aspx> and, for electronic format documents, subject to Terms and Conditions for Electronic Documents at <http://www.sgs.com/en/Terms-and-Conditions/Terms-e-Document.aspx>. Attention is drawn to the limitation of liability, indemnification and jurisdiction issues defined therein. Any holder of this document is advised that information contained hereon reflects the Company's findings at the time of its intervention only and within the limits of Client's instructions, if any. The Company's sole responsibility is to its Client and this document does not exonerate parties to a transaction from exercising all their rights and obligations under the transaction documents. This document cannot be reproduced except in full, without prior written approval of the Company. Any unauthorized alteration, forgery or falsification of the content or appearance of this document is unlawful and offenders may be prosecuted to the fullest extent of the law. Unless otherwise stated the results shown in this test report refer only to the sample(s) tested and such sample(s) are retained for 30 days only.  
**Attention: To check the authenticity of testing/inspection report & certificate, please contact us at telephone: (86-755) 83071443, or email: CN.Doccheck@sgs.com**

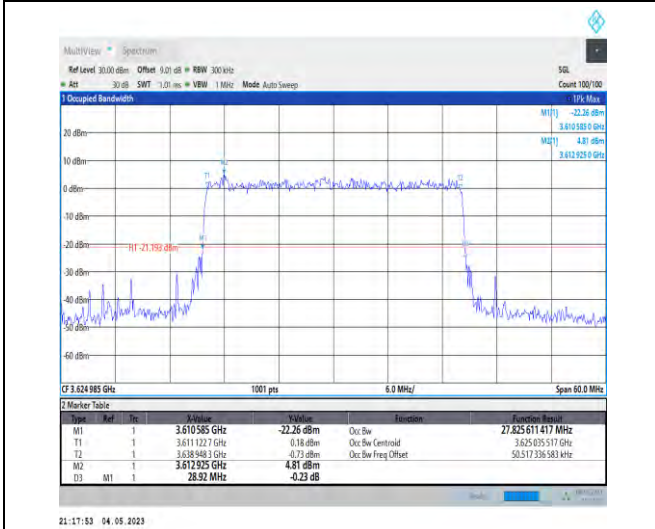
No.1 Workshop, M-10, Middle Section, Science & Technology Park, Shenzhen, China 518057 t (86-755) 26012053 f (86-755) 26710594 www.sgs.com.cn  
中国·深圳·科技园中区M-10栋一号厂房 邮编: 518057 t (86-755) 26012053 f (86-755) 26710594 sgs.china@sgs.com



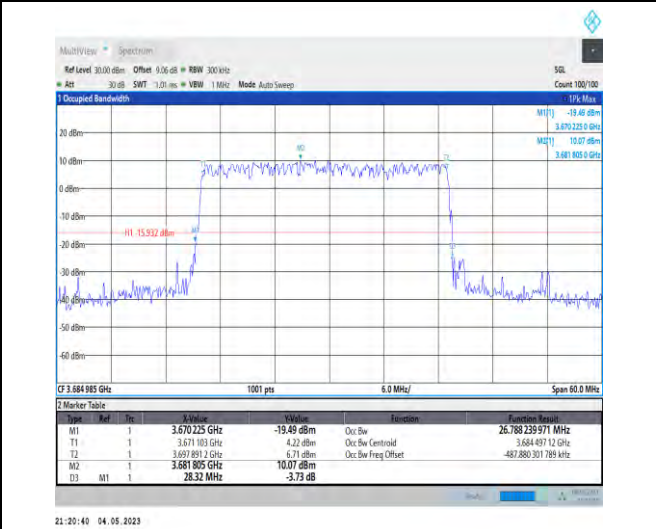
1-N48-PC3-30-30-M-7-CP-16QAM-Outer\_Full-78@0  
-Ant1-27.881-29.100-≤30-PASS



1-N48-PC3-30-30-M-8-CP-64QAM-Outer\_Full-78@0  
-Ant1-27.874-28.980-≤30-PASS



1-N48-PC3-30-30-M-9-CP-256QAM-Outer\_Full-78@0  
0-Ant1-27.826-28.920-≤30-PASS



1-N48-PC3-30-30-H-1-DFT-QPSK-Outer\_Full-75@0  
-Ant1-26.788-28.320-≤30-PASS



Unless otherwise agreed in writing, this document is issued by the Company subject to its General Conditions of Service printed overleaf, available on request or accessible at <http://www.sgs.com/en/Terms-and-Conditions.aspx> and, for electronic format documents, subject to Terms and Conditions for Electronic Documents at <http://www.sgs.com/en/Terms-and-Conditions/Terms-e-Document.aspx>. Attention is drawn to the limitation of liability, indemnification and jurisdiction issues defined therein. Any holder of this document is advised that information contained hereon reflects the Company's findings at the time of its intervention only and within the limits of Client's instructions, if any. The Company's sole responsibility is to its Client and this document does not exonerate parties to a transaction from exercising all their rights and obligations under the transaction documents. This document cannot be reproduced except in full, without prior written approval of the Company. Any unauthorized alteration, forgery or falsification of the content or appearance of this document is unlawful and offenders may be prosecuted to the fullest extent of the law. Unless otherwise stated the results shown in this test report refer only to the sample(s) tested and such sample(s) are retained for 30 days only.  
**Attention: To check the authenticity of testing/inspection report & certificate, please contact us at telephone: (86-755) 83071443, or email: CN.Doccheck@sgs.com**

No.1 Workshop, M-10, Middle Section, Science & Technology Park, Shenzhen, China 518057 t (86-755) 26012053 f (86-755) 26710594 www.sgs.com.cn  
中国·深圳·科技园中区M-10栋一号厂房 邮编: 518057 t (86-755) 26012053 f (86-755) 26710594 sgs.china@sgs.com