

ANTENNA INFORMATION

OEM	Dell
ODM	COMPAL
Platform model name	T07H
Intel platform (ex: Yes, No or NA)	Yes
Platform type (ex: regular NB, convertible PC, AIO...etc)	"Portable Computer – Tablet".
SAR minimum separation (mm)	2mm

Antenna manufacturer	Speed Wireless Technology CO.,LTD.	
Address	25F, No.95, Xinpu 6th St., Taoyuan Dist., Taoyuan City 33044, Taiwan.	
Antenna Part number	Main: MPN:F-0G-FH-6169-001-00 CPN: DC33002U74L	Aux: MPN:F-0G-FH-6169-001-00 CPN:DC33002U74L
Antenna type (ex: PIFA, Dipole...etc)	PIFA	

Antenna Peak gain w/ cable loss (dBi)*										
	2.4GHz 2400-2483.5 MHz	5.2GHz 5150-5250MHz	5.3GHz 5250-5350MHz	5.6GHz 5470-5725MHz	5.8GHz 5725-5850MHz	5.9GHz 5850-5895MHz	6.2GHz 5925-6425MHz	6.5GHz 6425-6525MHz	6.7GHz 6525-6875MHz	7.0 GHz 6875-7125MHz
Main	1.96	0.12	-0.33	1.96	1.64	1.15	2.58	2.21	1.79	1.38
Aux	1.68	-0.24	0.33	0.40	1.72	1.62	1.91	1.48	0.10	0.31

Cable Assembly Part Number and Information					
	Cable PN	Cable length(cm)	Cable diameter(mm)	Impedance(ohm)	Connector type
Main	White 1.13SLLS SY113L/50-143	102.5	1.13	50	I-PEX MHF-4L(20565-001R-13)
Aux	Black 1.13SLLS SY113L/50-118	66	1.13	50	I-PEX MHF-4L(20565-001R-13)

* 3D Antenna Peak Gain required being test in system basis.

Table of Contents

Cover page	1
1. Intel Reference Gain and Type	3
2. Document Revision History	3
3. Test & System Description	
3.1 Measurement Method and System.....	4
3.2 Test setup.....	4
3.3 Equipment list.....	5
4. Radiation characteristics of antenna loaded in Host Platform	6
Annex A. Photographs	
A.1 Setup Photo.....	16
A.2 Test sample.....	17
Annex B. Antenna Location	
B.1 Antenna Host Platform Location Information.....	19
B.2 Antenna dimensional information for SAR evaluation.....	20

1. Intel Reference Gain and Type

Antenna Peak gain w/ cable loss (dBi)											
Band/Frequency		2.4GHz 2400-2483.5 MHz	5.2GHz 5150-5250MHz	5.3GHz 5250-5350MHz	5.6GHz 5470-5725MHz	5.8GHz 5725-5850MHz	5.9GHz 5850-5895MHz	6.2GHz 5925-6425MHz	6.5GHz 6425-6525MHz	6.7GHz 6525-6875MHz	7.0 GHz 6875-7125MHz
Design	EU/UK	3.00	5.00	5.00	5.00	5.00	5.00	5.00	5.00	5.00	5.00
PIFA	For WiFi 6E and earlier	3.24	3.64	3.73	4.77	4.97	4.72	4.83	4.30	5.37	5.59
	From WiFi 7	2.95	5.11	4.55	5.15	5.13	4.45	5.02	5.02	4.96	4.96
Dipole	For WiFi 6E and earlier	2.89	2.92	3.19	4.41	4.22	4.22	4.83	4.30	4.49	5.34
	From WiFi 7	2.95	4.03	4.11	5.15	5.13	4.45	5.02	4.71	4.49	4.96

3D Peak Antenna gain should be equal or greater than -2 dBi

If a host integrator plans to use a lower gain antenna of the same type, additional CBP(FCC)/EDT(EU) testing need to be performed while the module is installed in the host.

2. Document Revision History

Revision #	Revision Details	Issued Date
Rev. 00	First Issue	2023.06.20

3. Test & System Description

3.1 Measurement Method and System

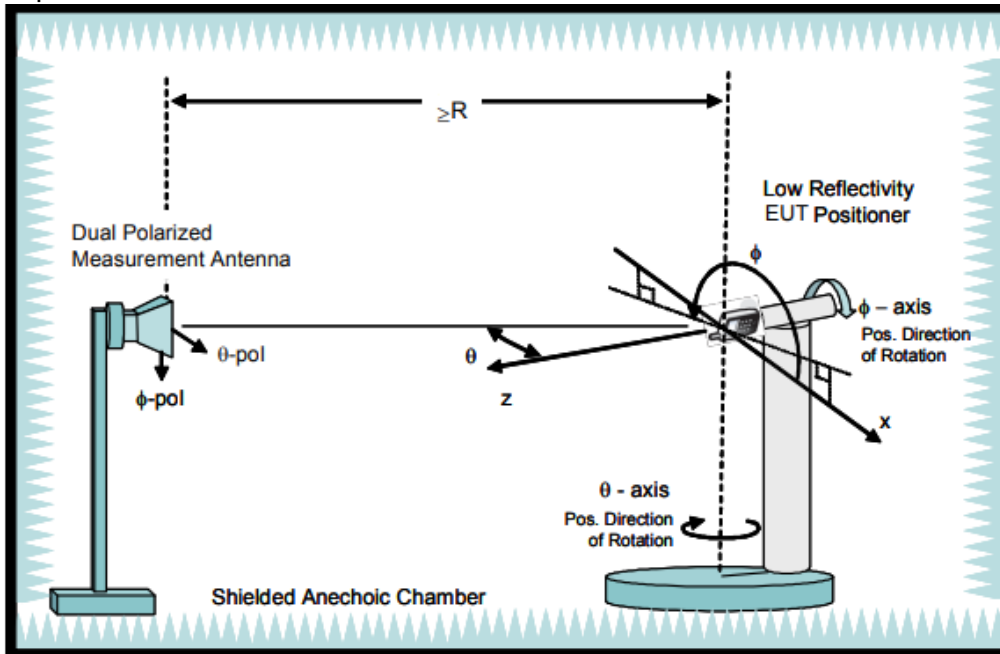
The gain measurement shall follow by following conditions:

- It is required that all the antenna gain to be measured spherically and computed by spatial average be computed of the resultant gain.
- During gain measurement, all other antennas not under test should be terminated by 50 Ohm load in end of cable.
- Space points of 3D gain measurement are increase by specific steps from Theta 0~180 degrees, and Phi, 0~360 degrees, as figure below. The increments steps are different steps are different by antenna functions.

Theta Start	0 degree	Phi Start	0 degree
Theta Stop	165 degree	Phi Stop	345 degree
Theta Increment	15 degree	Phi Increment	15 degree

3.2 Test setup

The testing of antenna gain should be made at a CTIA qualified lab with an RF anechoic chamber with at least 3-meter separation from the receive antenna to the antenna under test. The antenna gain report from unqualified lab can't be referenced a passing. Besides, all test equipment including horn antennas, adapters, cables, network analyzers, and receivers shall be calibrated per manufacturer's minimum calibration requirements.



3.3 Equipment list

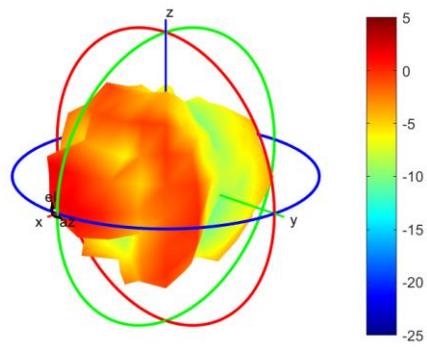
Device	Type/Model	Serial #	Manufacturer	Cal. Date	Cal. Due Date
Anechoic Chamber	AMS8500	-	ETS-Lindgren	22-Jun-22	10-Jul-24
Turn Table	2117-7200	SN00231447	ETS-Lindgren	22-Jun-22	10-Jul-24
Switch & Positioning systems	EMCenter	SN00242606	ETS-Lindgren	22-Jun-22	10-Jul-24
Measurement SW	EMQuest V1.15 build 27347	SN1802	ETS-Lindgren	22-Jun-22	10-Jul-24
Horn antenna	3164-10	SN00246202	ETS-Lindgren	22-Jun-22	10-Jul-24
Vector Network Analyzer	E5071C	PN5188-4462	Keysight	30-May-22	30-Nov-23
Cable 7.5m 400MHz to 18GHz(H-pol)	SS402	00100A1F5A1XXS	WOKEN	22-Jun-22	10-Nov-24
Cable 7.5m 400MHz to 18GHz(V-pol)	SS402	00100A1F5A1XXS	WOKEN	22-Jun-22	10-Nov-24
Cable 14m 400MHz to 18GHz	SS402	00100A1F5A1XXS	WOKEN	22-Jun-22	10-Nov-24
Temp & Humidity Logger	830	SN84972	PROVA	16-Jul-22	10-Jul-23

4. Radiation characteristics of antenna loaded in Host Platform

Main Antenna

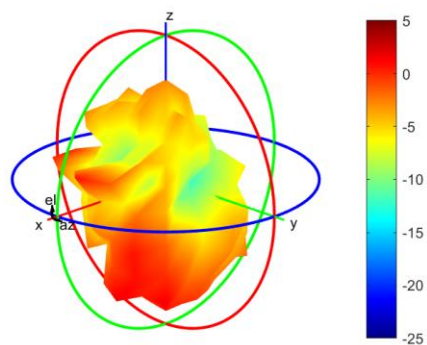
Max Antenna 3D Radiation Pattern 2400 – 2483.5 MHz

Frequency (MHz)	Peak Gain w/ Cable Loss (dBi)
2400-2483.5	1.96



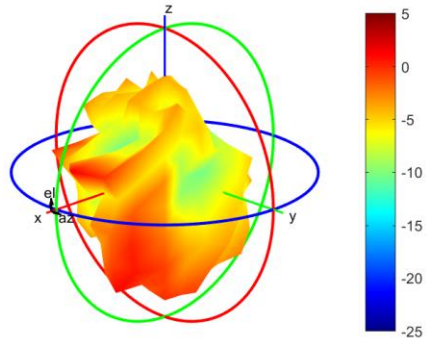
Max Antenna 3D Radiation Pattern 5150-5250 MHz

Frequency (MHz)	Peak Gain w/ Cable Loss (dBi)
5150-5250	0.12



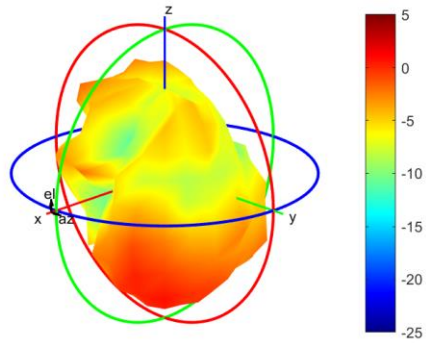
Max Antenna 3D Radiation Pattern 5250-5350 MHz

Frequency (MHz)	Peak Gain w/ Cable Loss (dBi)
5250-5350	-0.33



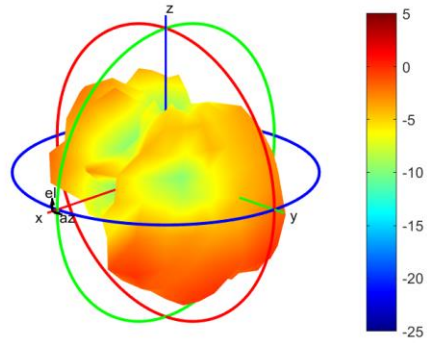
Max Antenna 3D Radiation Pattern 5470-5725 MHz

Frequency (MHz)	Peak Gain w/ Cable Loss (dBi)
5470-5725	1.96



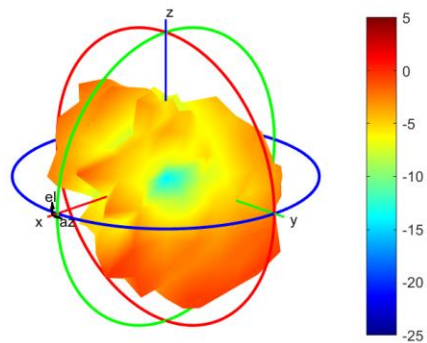
Max Antenna 3D Radiation Pattern 5725-5850 MHz

Frequency (MHz)	Peak Gain w/ Cable Loss (dBi)
5725-5850	1.64



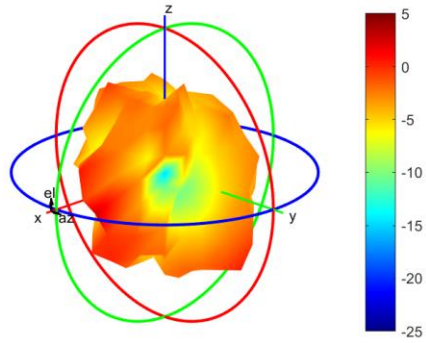
Max Antenna 3D Radiation Pattern 5850-5895 MHz

Frequency (MHz)	Peak Gain w/ Cable Loss (dBi)
5850-5895	1.15



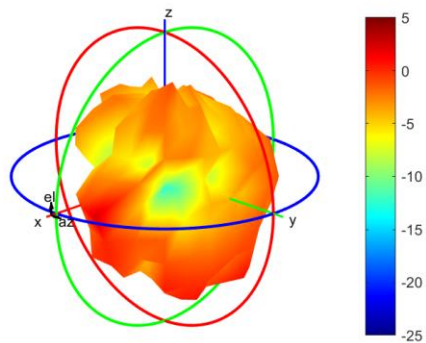
Max Antenna 3D Radiation Pattern 5925-6425 MHz

Frequency (MHz)	Peak Gain w/ Cable Loss (dBi)
5925-6425	2.58



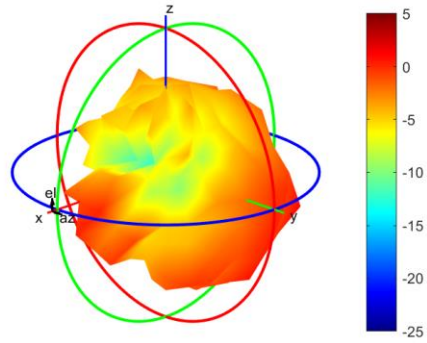
Max Antenna 3D Radiation Pattern 6425-6525 MHz

Frequency (MHz)	Peak Gain w/ Cable Loss (dBi)
6425-6525	2.21



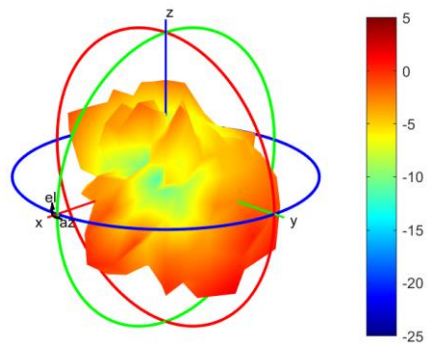
Max Antenna 3D Radiation Pattern 6525-6875 MHz

Frequency (MHz)	Peak Gain w/ Cable Loss (dBi)
6525-6875	1.79



Max Antenna 3D Radiation Pattern 6875-7125 MHz

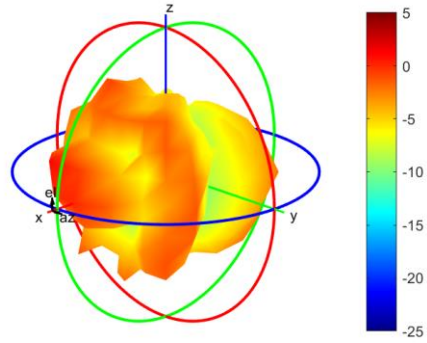
Frequency (MHz)	Peak Gain w/ Cable Loss (dBi)
6875-7125	1.38



Auxiliary Antenna

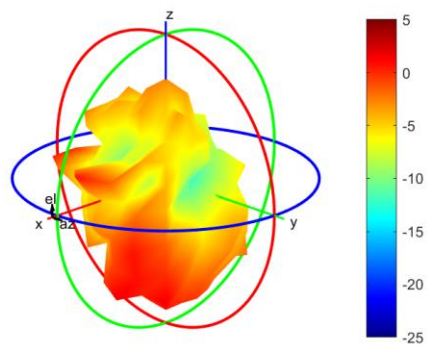
Max Antenna 3D Radiation Pattern 2400 – 2483.5 MHz

Frequency (MHz)	Peak Gain w/ Cable Loss (dBi)
2400-2483.5	1.68



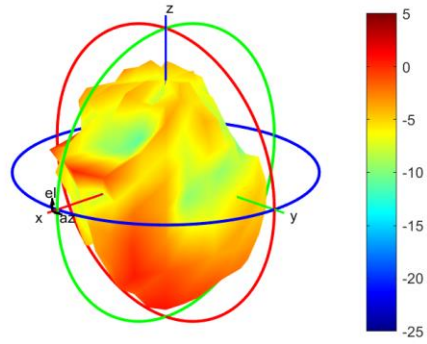
Max Antenna 3D Radiation Pattern 5150-5250 MHz

Frequency (MHz)	Peak Gain w/ Cable Loss (dBi)
5150-5250	-0.24



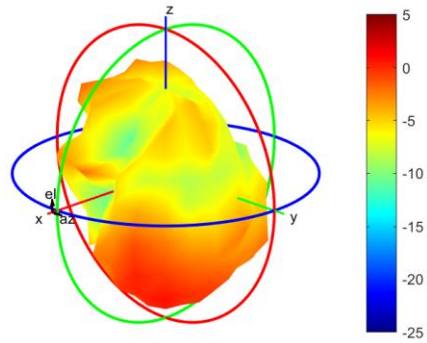
Max Antenna 3D Radiation Pattern 5250-5350 MHz

Frequency (MHz)	Peak Gain w/ Cable Loss (dBi)
5250-5350	0.33



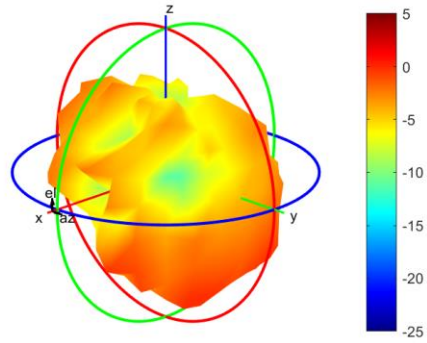
Max Antenna 3D Radiation Pattern 5470-5725 MHz

Frequency (MHz)	Peak Gain w/ Cable Loss (dBi)
5470-5725	0.40



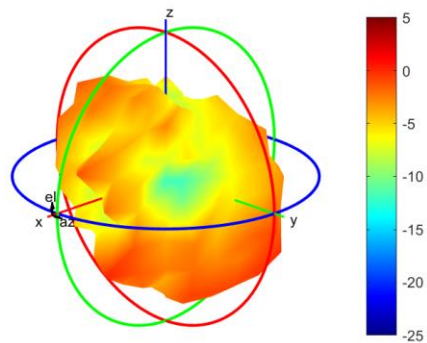
Max Antenna 3D Radiation Pattern 5725-5850 MHz

Frequency (MHz)	Peak Gain w/ Cable Loss (dBi)
5725-5850	1.72



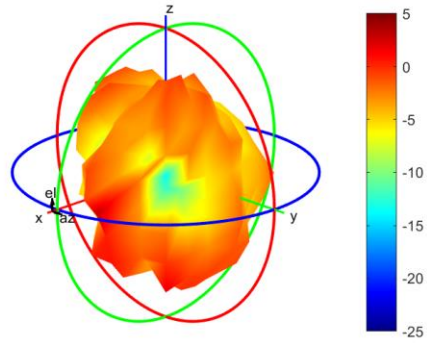
Max Antenna 3D Radiation Pattern 5850-5895 MHz

Frequency (MHz)	Peak Gain w/ Cable Loss (dBi)
5850-5895	1.62



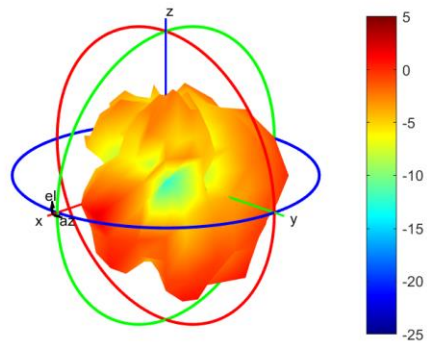
Max Antenna 3D Radiation Pattern 5925-6425 MHz

Frequency (MHz)	Peak Gain w/ Cable Loss (dBi)
5925-6425	1.91



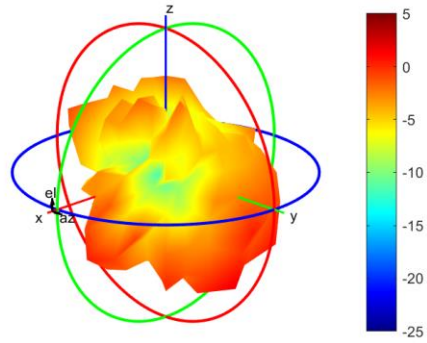
Max Antenna 3D Radiation Pattern 6425-6525 MHz

Frequency (MHz)	Peak Gain w/ Cable Loss (dBi)
6425-6525	1.48



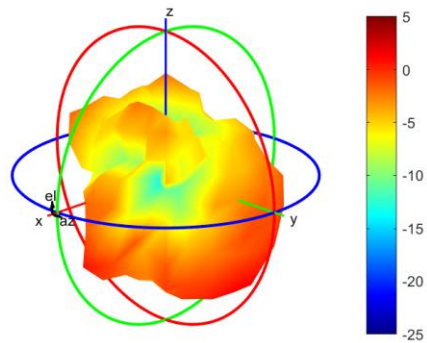
Max Antenna 3D Radiation Pattern 6525-6875 MHz

Frequency (MHz)	Peak Gain w/ Cable Loss (dBi)
6525-6875	0.10



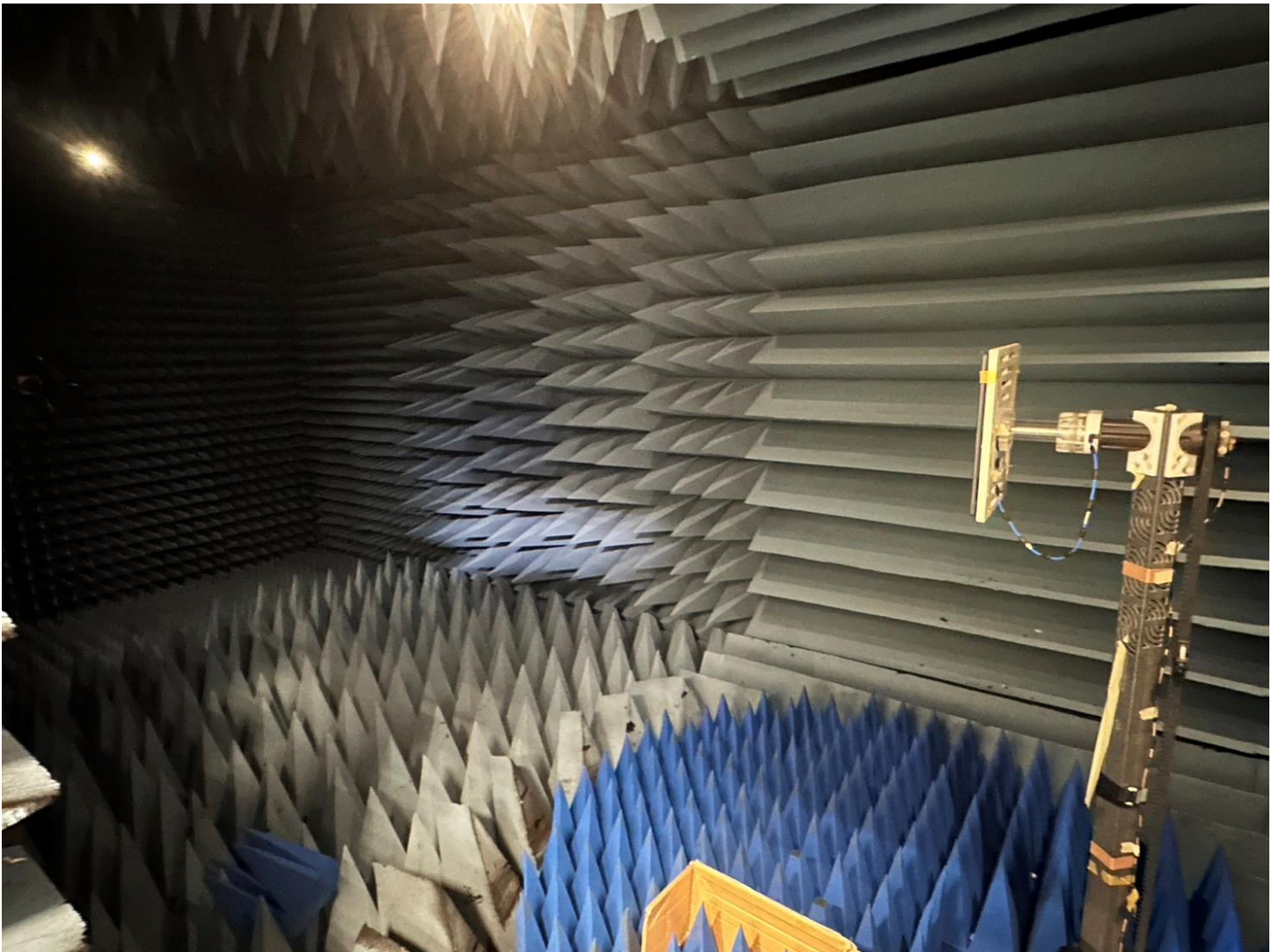
Max Antenna 3D Radiation Pattern 6875-7125 MHz

Frequency (MHz)	Peak Gain w/ Cable Loss (dBi)
6875-7125	0.31



Annex A. Photographs

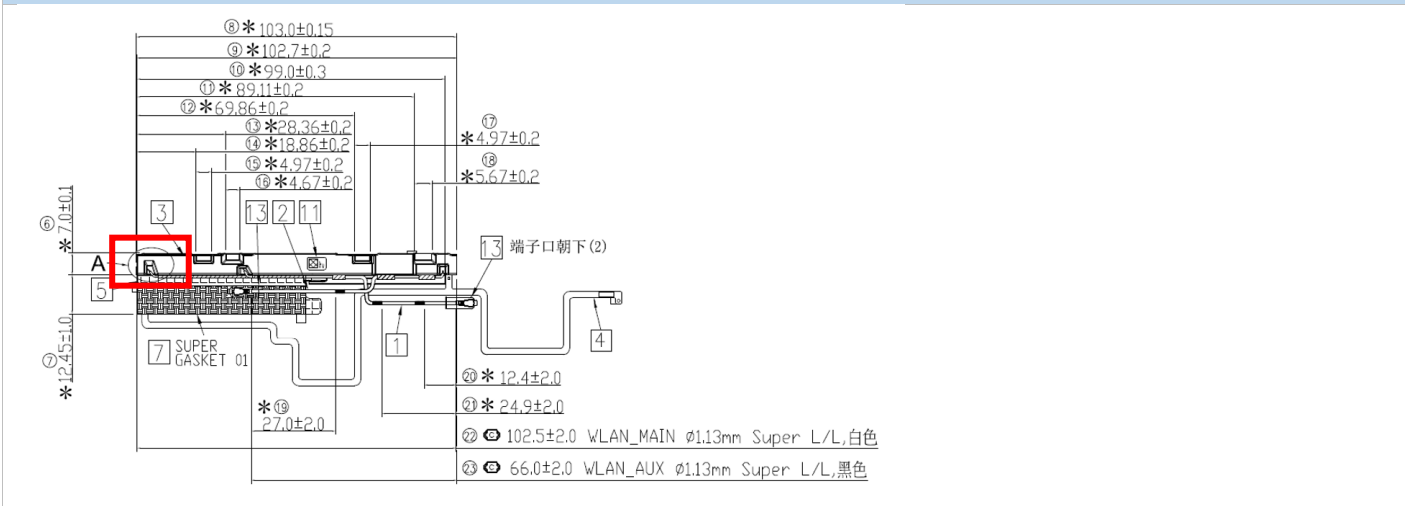
A.1 Setup Photo



A.2 Test sample

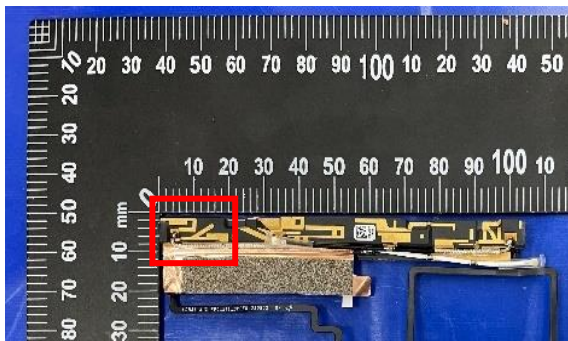
Main Antenna

Antenna Drawing

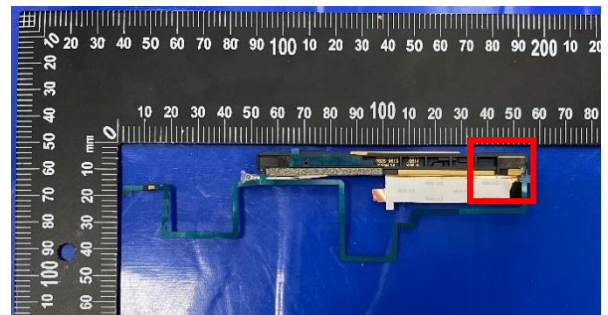
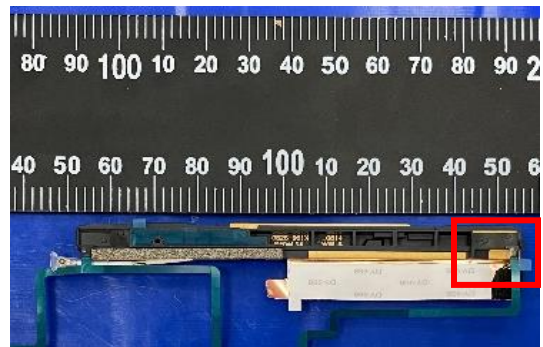


Antenna Photo

Front



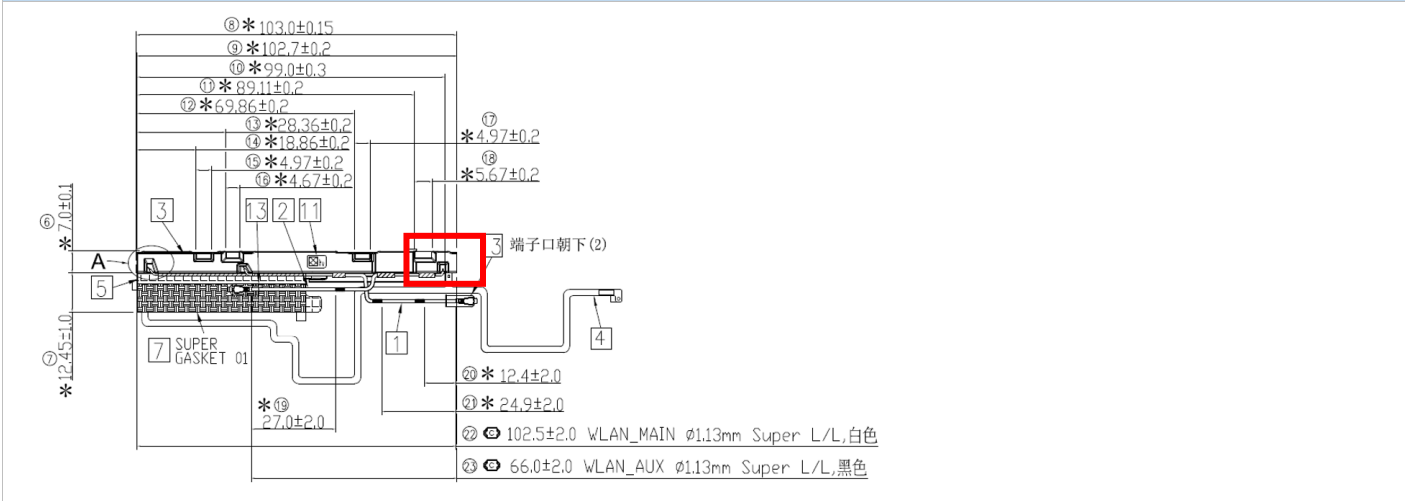
Back



Note: antenna photo should include L type ruler

Aux Antenna

Antenna Drawing

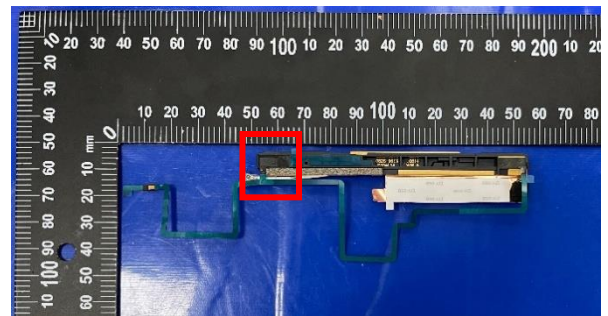
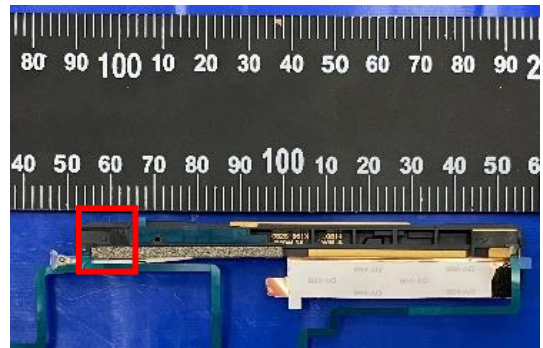


Antenna Photo

Front



Back



Note: antenna photo should include L type ruler

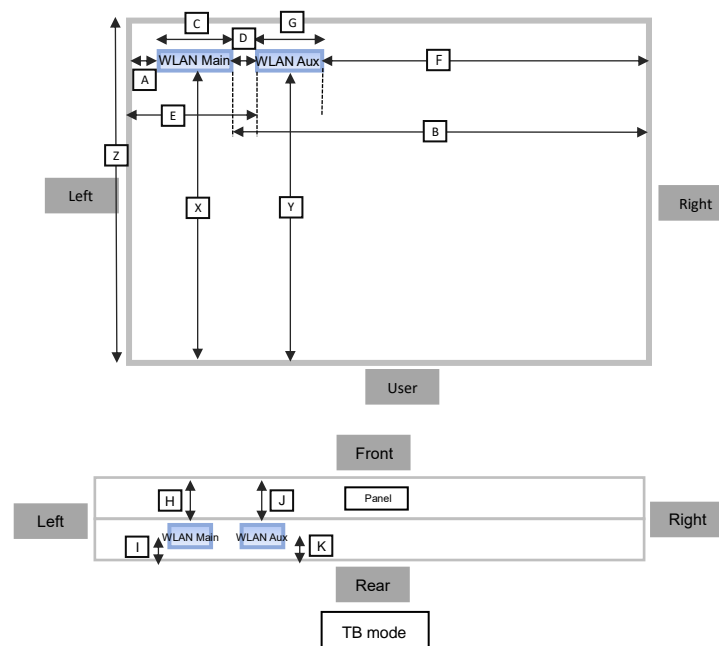
Annex B. Antenna Location

B.1 Antenna Host Platform Location Information

Include a dimensioned photo(s) or dimensioned drawing(s) of Main and Aux antenna placements (measurements are not required for receive-only antenna).

Any antenna that transmits must show dimensions to bottom of laptop. Provide a description of the materials that are used for supporting or surrounding transmit antennas; for example, non-conductive plastics vs. conductive coated plastic or metallic materials.

Minimum Separation Distance			
Item	Antenna	Position	Distance (mm)
A	WLAN-Main	To left	17mm
B	WLAN-Main	To right	256mm
C	WLAN-Main	Main antenna length	18mm
D	Main-Aux	Main to Aux	72mm
E	WLAN-Aux	To left	106mm
F	WLAN-Aux	To right	200mm
G	WLAN-Aux	Aux antenna length	14mm
X	WLAN-Main	To user	202mm
Y	WLAN-Aux	To user	202mm
Z	TB	Depth	206mm



Minimum Separation Distance			
Item	Antenna	Position	Distance (mm)
H	WLAN-Main	To front	3mm
I	WLAN-Main	To rear	2mm
J	WLAN-Aux	To front	3mm
K	WLAN-Aux	To rear	2mm

B.2 Antenna dimensional information for SAR evaluation

Include a dimensioned photo(s) or dimensioned drawing(s) showing the distance (mm) between the transmit antennas and the user. For notebook/laptop hosts show lapheld position (example below). For tablet hosts show all orientations including lapheld, primary & secondary portrait, primary & secondary landscape positions. Include a description of any proximity sensors or power throttling implementations that limit or exclude use of any host orientation.

