



Quick-Start Guide

Wyse® Z Class Cloud Clients, Model Zx0Q

Products: Z00Q (cloud PC), Z50Q, Z90Q7, Z90Q7p, Z90Q8, Z90Q8x (thin clients)

See accompanying documents in the shipping carton for License Agreement and Warranty information.

To find the latest Quick-Start Guide, go to <http://www.wyse.com/manuals> and click on the name of your cloud client.

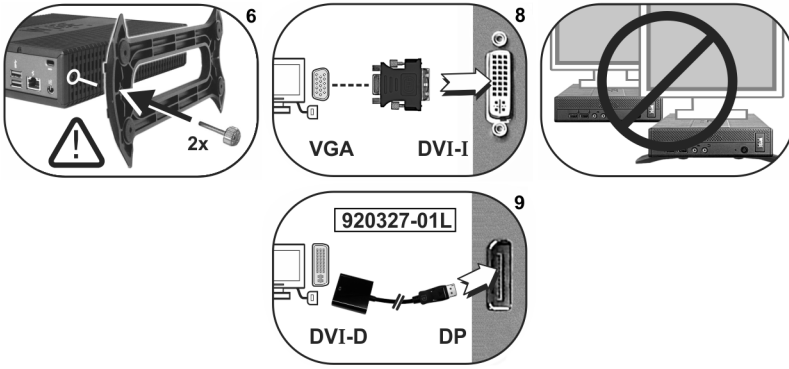
Important: A printed copy of the Wyse Technology End User License Agreement is included in the shipping box and provided for your reference only. The license at <http://www.wyse.com/license> as of the purchase date is the controlling licensing agreement. By copying, using, or installing the software or the product, you agree to be bound by those terms.

Important: If you use Wyse Device Manager Server software for managing your Wyse cloud clients, download the latest version to ensure compatibility at <http://support.wyse.com/selfservice.html>.

Caution: Improper connection, mounting, or use of this product could result in component failure or undesired interference. Read *Safety Guidelines* before setting up and operating the cloud client.

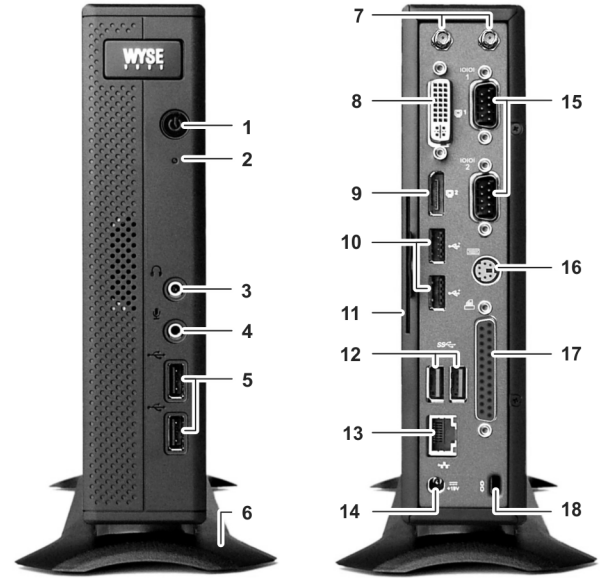
DRAFT

Z00Q, Z50Q, Z90Q7, Z90Q7p, Z90Q8, Z90Q8x



Components

- 1 Power on/off button/light
- 2 Activity light
- 3 Line out/Speaker out^[1]
- 4 Microphone in
- 5 USB 2.0 port (2)^[2]
- 6 Vertical stand
- 7 Wireless antenna port (2) (optional)^[3]
- 8 DVI-I port (1x DVI-D or 1x VGA)
- 9 DisplayPort connector
- 10 USB 2.0 port (2)^[2]
- 11 Product information tab
- 12 SuperSpeed USB 3.0 port (2)^[2]
- 13 Network port, 10/100/1000 Base-T
- 14 +19V Power adapter input
- 15 Serial port (2) (optional)^[4]
- 16 PS/2 keyboard-only port (optional)^[4]
- 17 Parallel port (optional)^[4]
- 18 Lock receptacle
- 19 PS/2 mouse port located on keyboard



Components may vary based on model and location.

^[1] **Warning:** Listening to audio at high volume levels for extended durations can damage your hearing.

^[2] Not all USB devices are supported; check with Wyse or your Wyse representative to find out if a particular device is supported on your cloud client.

^[3] Wireless option not available in all localities.

^[4] The 2x Serial + 1x PS/2 + 1x Parallel ports is a factory-installed option since it requires a different back panel.

Setting Up Your Cloud Client

Read Safety Guidelines before setting up and operating the cloud client. Refer to the figures and proceed as follows:

1. Place the cloud client on a desk, or use a Wyse-approved mounting accessory kit. Make sure that the monitor and the cloud client are turned off and disconnected from AC power.
2. Make all desired connections (video display and keyboard with mouse are required). Connection to a 10/100/1000 Base-T Ethernet network is required unless an optional WiFi network adapter is used for wireless connection to a network. Additional connections of peripheral devices may be made to the other ports.
3. Connect the power adapter to the cloud client power input before connecting to a 100-240V AC, 50-60 Hz electrical outlet, and then press the power button to apply power. When the initialization sequence is complete, the amber activity light changes to green.

Default User Names and Passwords

(Case Sensitive)

	Wyse® Enhanced SUSE Linux Enterprise	Microsoft® Windows® Embedded Standard 2009* / 7* / 7p*
Administrator		
User Name	admin	administrator
Password	admin	Wyse#123
User		
User Name	thinuser	user
Password	thinuser	Wyse#123

* For administrators, log off User desktop while holding down the **Shift** key until the logon box appears.

Windows- and Linux-Based Thin Client - After turning on, the thin client initially goes through several boot sequence procedures before the operating system loads. Information about setting up your server environment is available in the thin client's documentation.

Cloud PC - WSM software is required; no operating system is installed, and therefore no default user name and password are defined. Information about setting up your server environment is available in the WSM documentation.

Safety Guidelines

Improper connection, mounting, or use of this product could result in component failure or undesired interference. Read the following guidelines before setting up and operating the device.

Setup

- Do not connect to AC power until all other connections (including the power adapter) are made. Connecting or disconnecting components or equipment on the back panel when the device is receiving AC power can cause power surges and damage the device.
- Do not force a connector into its socket. If any undue resistance is encountered, ensure that the connector is correctly oriented to the receptacle.
- For wireless usage and requirements, refer to the regulatory notices in the device's documentation.

Venting and Care

- Mount the device only as shown or in accordance with the instructions provided with Wyse-approved mounting accessory kits. Improper orientation could restrict airflow of heat from the device and damage it.
- Allow sufficient space around the device for ventilation; do not place the device in any enclosure that restricts airflow around the device; do not place any objects on the device or block the vent outlets. For environmental operating specifications, locate your product and download the Fact Sheet using the Cloud clients tab at: <http://www.wyse.com/products>

Power Sources

- For regulatory compliance use only the power adapter that comes with your device or a Wyse-approved equivalent. For proper replacement compare the labels on both device and power adapter to ensure that their voltages match.
 - ⚠ **Warning:** Use of any other power adapter may damage your device or the power adapter. The damage caused by an improper power adapter is not covered by warranty.
- Accidental loss of power can damage device. Avoid connecting it to any power outlet which can be accidentally switched off. Do not hard reset the device by holding down the power button during normal operation.
- When turning off the device, be sure to perform a complete shutdown (via the user interface or a light press on the power button). Do not disconnect the AC power cord, DC power cord, or shut off power at a circuit breaker (including power strips), etc., to turn off the device.
- Surge protectors for electrical devices are recommended in areas of lightning. However, when lightning is occurring, your equipment should be properly shut down and unplugged from AC power until the storm has passed.
- Be very careful to not interrupt power while the device is downloading a software update.

Battery

The device contains an internal button cell battery replaceable by Wyse or one of our Authorized Service Centers. For service, visit <http://www.wyse.com/support/authorized-service-centers>.

⚠ **Warning:** There is a risk of explosion if the battery is replaced by an incorrect type. Always dispose of used batteries according to the instructions accompanying the battery.

⚠ **Warning:** Perchlorate Materials - Special Handling May Be Required under California Code of Regulations, title 22. (Only required within the U.S.A.)

Need more information?

Wyse Reference Guides - User, Administrator, and related documentation is available at: <http://www.wyse.com/manuals>

Wyse-Approved Mounting Accessory Kits - Information about approved mounting accessory kit options is available at: <http://www.wyse.com/products/accessories/mounting-options>

Wyse Service and Support - Latest software images are available at: <http://www.wyse.com/downloads>

Wyse Device Manager - Information about Wyse remote management software is available at: <http://www.wyse.com/products/software/management/WDM>

Wyse WSM - Information about Wyse WSM software is available at: <http://www.wyse.com/products/software/cloud/WSM>

Wyse and the Environment - Information about Wyse compliance with RoHS and with the Waste Electrical and Electronic Equipment (WEEE) is available at: <http://www.wyse.com/green>

Wyse and E-Recycling - Information about recycling unwanted Wyse product within the United States is available at: <http://www.wyse.com/erecycling>

Wyse Warranty Registration* - Register your product at: <http://www.wyse.com/registration>

*The standard warranty is three years from the date of purchase.

Notes



Wyse Technology L.L.C.
3471 North First Street
San Jose, CA 95134-1801 U.S.A.

88394x-01L Rev. A
May 2013
Printed in U.S.A.

©2013 Wyse Technology L.L.C. All rights reserved. This product and/or associated software are protected by copyright international treaties, and various patents, including the following U.S. patents: 6,836,885 and 5,918,039.



Printed on 50% post-consumer recycled paper