

Regulatory WLAN Antenna Information

(English Language Required for Intel Regulatory Review / Approval)

Platform	
Platform Owner	Brian Bruce
Brand Name	AMG XFR
Model Name	AMG XFR
ODM	Augmentix
Target Launch Date	2009/6/25
Antenna	
Brand Name	Yageo Corporation
Part Number	<ul style="list-style-type: none"> ■ Tx1 Antenna: CAN4313986012501B ■ Tx2 (or Rx2) Antenna (Rx2 for 512 family ONLY) CAN4313986022501B ■ Tx3 (or Rx3) Antenna (Rx3 for 4965AGN ONLY) CAN4313986022501B
Module	
With WLAN Module	<input type="checkbox"/> WM3B2200BG
(Check Box)	<input type="checkbox"/> WM3B2915ABG
	<input type="checkbox"/> WM3945ABG
	<input type="checkbox"/> 4965AGN
	<input type="checkbox"/> 4965AG_
	<input type="checkbox"/> 533ANX Family
	<input type="checkbox"/> 512ANX Family
	<input type="checkbox"/> 533AN Family
	<input type="checkbox"/> 512AN Family

Antenna Sample / Antenna Data Requirements for worldwide regulatory approval

Section	Description of Required OEM / ODM Antenna Information	US / IC	EU	Japan	Taiwan	S.Korea
1A	Part Number for Antenna only	Required	Required	Required	Required	Required
1B	Antenna Manufacturer Name	Required	Required	Required	Required	Required
1C	Description of Antenna Type	Required	N/A	N/A	N/A	N/A
1D	Part number of Antenna Assembly / cable impedance, length & diameter.	Required	Desired	Desired	Desired	Desired
1E	Tx1, Tx2 & Tx3 antenna (Peak Gain W/ cable loss) *	Required	Required	Required	Required	Required
	1E OR 1F, 1G, 1H					
1F	Tx1, Tx2 & Tx3 antenna (Peak Gain only) *	Required	Required	Required	Required	Required
1G	VSWR of cable including connector	Required	Required	Required	Required	Required
1H	Tx1, Tx2 & Tx3 antenna (Cable loss W/ connector) *	Required	Required	Required	Required	Required
2	Dimensioned Photographs and Drawings of Tx1, Tx2, and Tx3 (or Rx3) antennas	Required	Required	Required	Required	Required
3	Radiation patterns of antennas loaded in the host platform.	Required	Desired	Required	N/A	Required
4	Platform model name / number - correlated to antenna manufacturer and antenna part number	Required	Required	Desired	Required	Desired
5	Photograph(s) or Drawings showing location of antennas in platform. <u>(S. Korea requires photographs of antennas for approval submission). Taiwan requires pictures of each antenna type shown in the system.</u>	Required	Required	Desired	Required (Photos)	Required (Photos)
6	Mech. drawings / photos with dimensions of antenna locations and distance from end-user (For evaluation of SAR testing requirement).	Required	N/A	N/A	N/A	N/A
7	Photograph(s) or Drawings showing the location of all antennas (WLAN, other) and distance between those transmitting antennas. Information will be used to evaluate whether co-location testing is required.	Required	N/A	N/A	N/A	N/A
8	Local representative contact information for LMA/ PARS process.	Required	N/A	N/A	N/A	N/A

NOTE:

(*) if 3rd antenna is Rx only (e.g. receive only for 4965AGN) then peak gain and cable loss not required

Antenna Information

Section 1. Antenna Assembly Specifications

Antenna Assembly Summary:

1A	1B	1C	1D	1E	1F	1G	1H
Antenna Part Number	Manufacture	Antenna Type	Cable Assembly Part Number and Information	*Peak Gain W/ Cable loss (dBi)	Peak Gain w/o Cable Loss (dBi)	VSWR	Cable Loss (dBi)
P/N: CAN4313986012501B	YAGEO Corporation	PIFA	Connector: (Hirose U.FL-LP) (Iplex MHF) 50 ohm Coaxial. Length: 600 mm diameter: 1.37mm	2400-2500MHz -0.43 dBi (peak)	2400-2500MHz 1.16 dBi (peak)	2400-2500MHz 2.50 max	2400-2500MHz 1.59 dBi (peak)
				2496-2690MHz N/A	2496-2690MHz N/A	2496-2690MHz N/A	2496-2690MHz N/A
				5150-5350MHz -0.29 dBi (peak)	5150-5350MHz 2.14 dBi (peak)	5150-5350MHz 2.85 max	5150-5350MHz 2.43 dBi (peak)
				5470-5725MHz 0.02 dBi (peak)	5470-5725MHz 2.55 dBi (peak)	5470-5725MHz 2.85 max	5470-5725MHz 2.53 dBi (peak)
				5725-5850MHz 0.02 dBi (peak)	5725-5850MHz 2.58 dBi (peak)	5725-5850MHz 2.85 max	5725-5850MHz 2.56 dBi (peak)
P/N: CAN4313986022501B Tx2 (or Rx2 for 512 family)	YAGEO Corporation	PIFA	Connector: (Hirose U.FL-LP) (Iplex MHF) 50 ohm Coaxial. Length: 572 mm diameter: 1.37mm	2400-2500MHz -1.10 dBi (peak)	2400-2500MHz 0.42 dBi (peak)	2400-2500MHz 2.50 max	2400-2500MHz 1.52 dBi (peak)
				2496-2690MHz N/A	2496-2690MHz N/A	2496-2690MHz N/A	2496-2690MHz N/A
				5150-5350MHz -0.55 dBi (peak)	5150-5350MHz 1.77 dBi (peak)	5150-5350MHz 2.85 max	5150-5350MHz 2.32 dBi (peak)
				5470-5725MHz -0.99 dBi (peak)	5470-5725MHz 1.42 dBi (peak)	5470-5725MHz 2.85 max	5470-5725MHz 2.41 dBi (peak)
				5725-5850MHz -0.99 dBi (peak)	5725-5850MHz 1.45 dBi (peak)	5725-5850MHz 2.85 max	5725-5850MHz 2.44 dBi (peak)
P/N: CAN4313986022501B Tx3 or Rx3	YAGEO Corporation	PIFA	Connector: (Hirose U.FL-LP) (Iplex MHF) 50 ohm Coaxial. Length: 561 mm diameter: 1.37mm	2400-2500MHz -0.44 dBi (peak)	2400-2500MHz 1.05 dBi (peak)	2400-2500MHz 2.50 max	2400-2500MHz 1.49 dBi (peak)
				2496-2690MHz N/A	2496-2690MHz N/A	2496-2690MHz N/A	2496-2690MHz N/A
				5150-5350MHz -1.07 dBi (peak)	5150-5350MHz 1.21 dBi (peak)	5150-5350MHz 2.85 max	5150-5350MHz 2.28 dBi (peak)
				5470-5725MHz -1.09 dBi (peak)	5470-5725MHz 1.27 dBi (peak)	5470-5725MHz 2.85 max	5470-5725MHz 2.36 dBi (peak)
				5725-5850MHz -1.13 dBi (peak)	5725-5850MHz 1.26 dBi (peak)	5725-5850MHz 2.85 max	5725-5850MHz 2.39 dBi (peak)

NOTE:

(* If Rx2/Rx3 only (2nd or 3rd antenna receives only, e.g. for 512 family & 4965AGN) then the information marked with * is not required

Antenna Peak Gain Table:

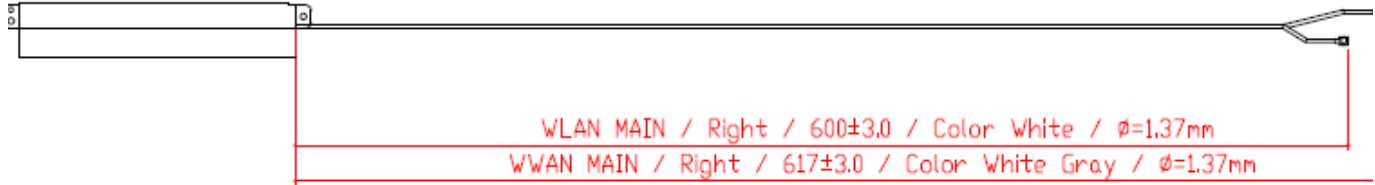
Frequency (MHz)	Tx1 antenna		Tx2 antenna		Tx3 (or Rx3) Antenna	
	Horizontal	Vertical	Horizontal	Vertical	Horizontal	Vertical
2400.00	-3.71	-3.05	-4.57	-3.54	-1.27	-5.13
2450.00	-0.70	-2.42	-3.49	-2.05	-4.26	-2.63
2500.00	-2.94	-5.36	-4.90	-2.10	-1.84	-5.12
5150.00	-3.72	-1.90	-3.35	-1.79	-2.75	-1.44
5250.00	-3.86	-1.21	-3.93	-1.79	-2.51	-1.39
5350.00	-2.67	-1.08	-4.02	-3.03	-4.10	-1.86
5470.00	-3.94	-0.53	-4.26	-2.82	-4.16	-2.18
5600.00	-3.34	-1.12	-3.70	-3.04	-3.78	-1.24
5725.00	-0.82	-0.15	-1.71	-4.00	-4.70	-1.31
5785.00	-1.11	-0.52	-2.84	-4.34	-4.53	-1.52
5850.00	-2.60	-0.90	-2.72	-4.21	-4.38	-1.40

- Antenna Peak Gain required being test in system basis.
- 1E frame contend absolutely peak antenna gain include H/V
- If Rx2 only (2nd antenna receives only, e.g. for 512 family) then the information is not required for Rx2.
- If Rx3 only (3rd antenna receives only, e.g. for 4965AGN) then the information is not required for Rx3.

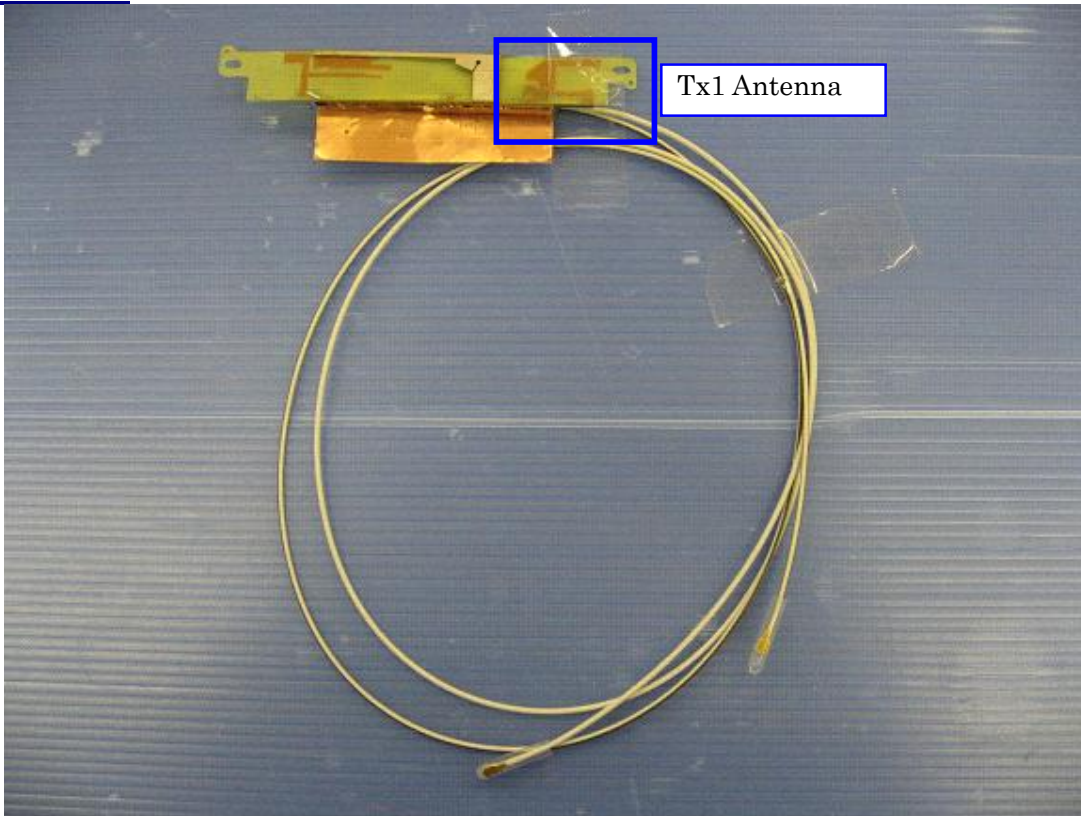
Section 2. Dimensioned Photos or Drawings of Antennas

Include a dimensioned photo and dimensioned drawing of Tx1 antenna here.

Tx1 Antenna Dimensioned Drawing:

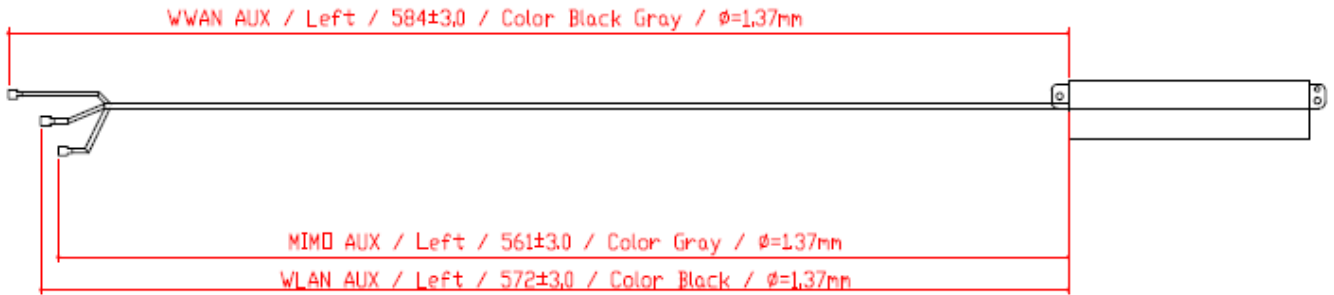


Tx1 Antenna Photo:

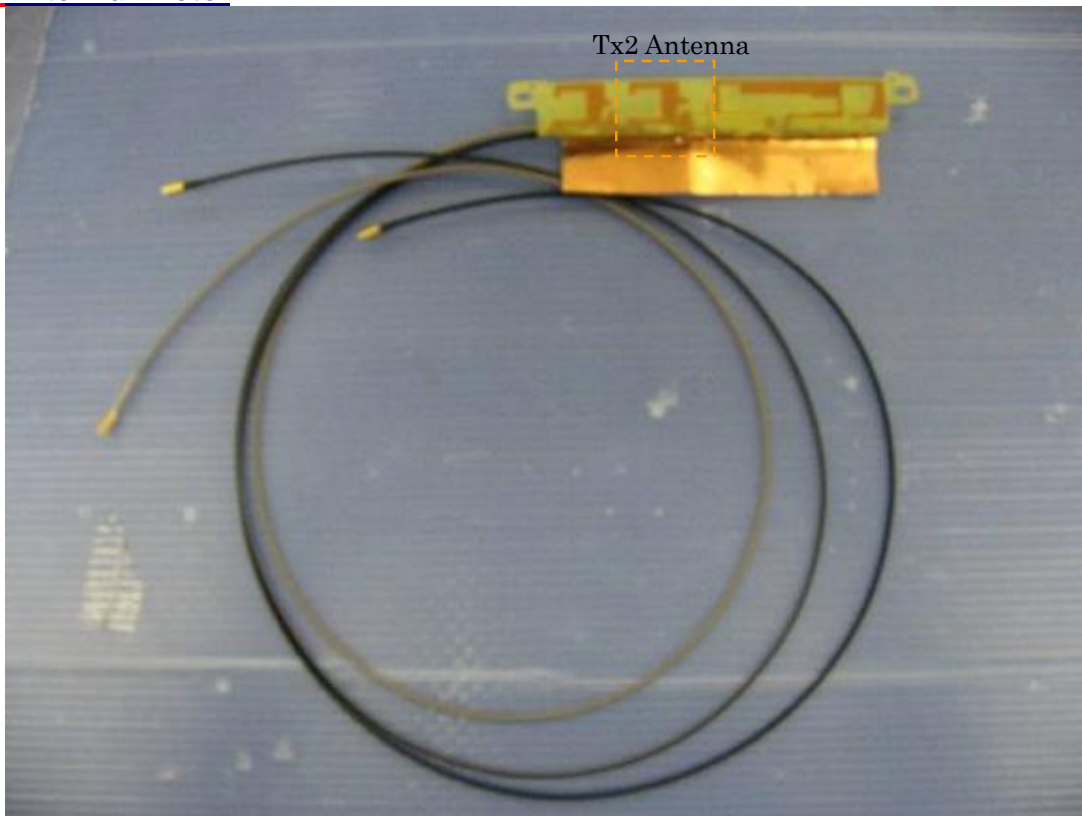


Include a dimensioned photo and dimensioned drawing of Tx2 (or Rx2) antenna here.

Tx2 (or Rx2) Antenna Dimensioned Drawing:

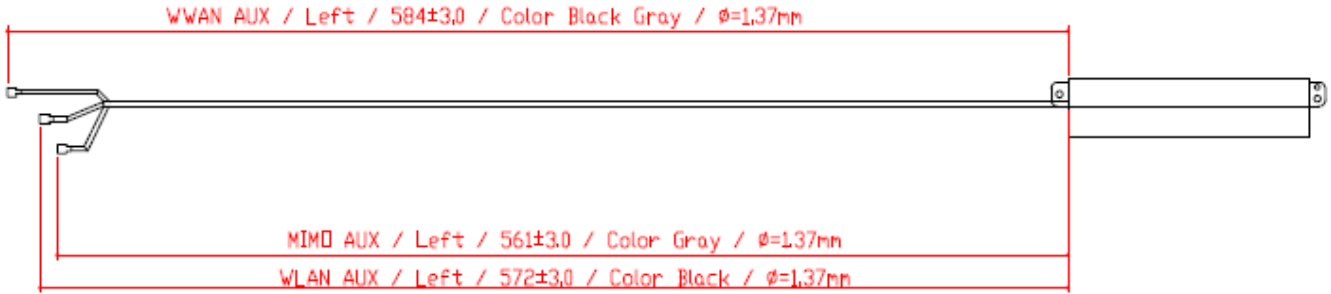


Tx2 (or Rx2) Antenna Photo:

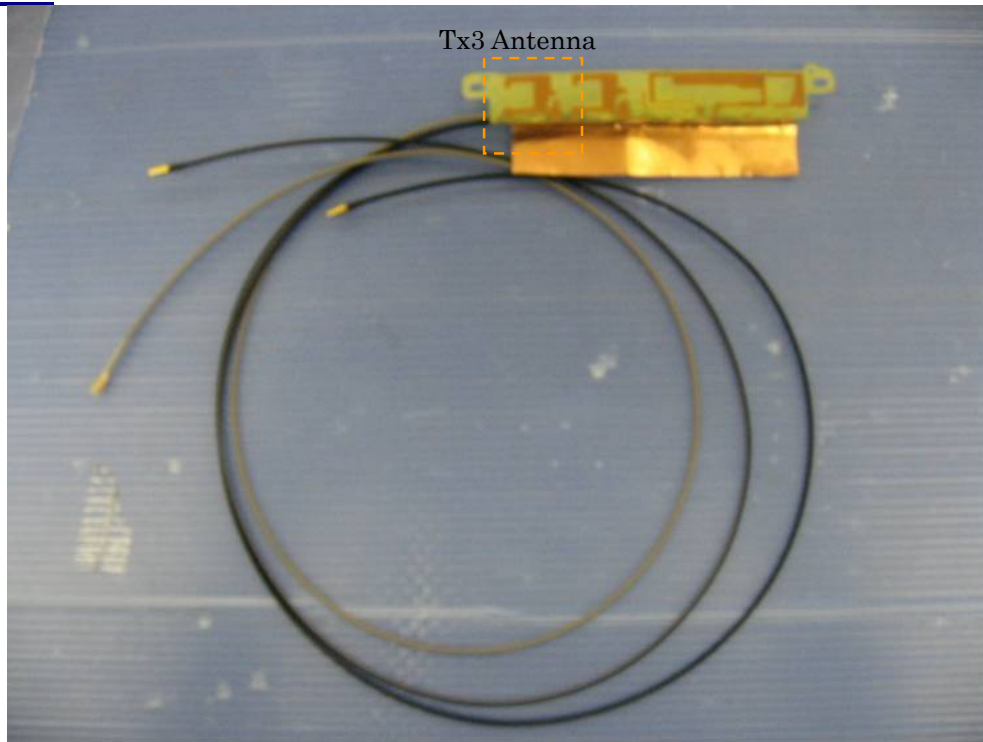


Include a dimensioned photo and dimensioned drawing of Tx3 (or Rx3) antenna here.

Tx3 Antenna Dimensioned Drawing:



Tx3 Antenna Phot

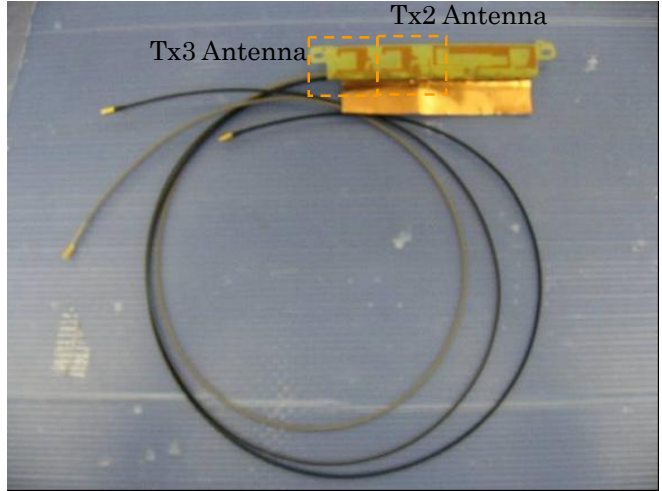
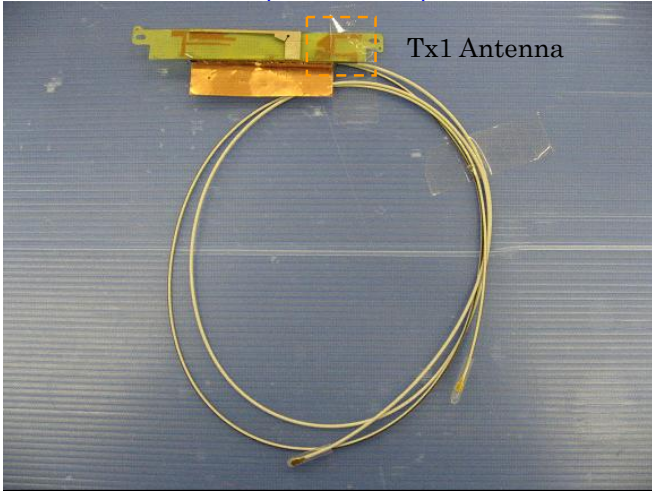


Include front view photo of all 2 antennas here.

Antenna Manufacturer: YAGEO

Antenna Part Number: CAN4313986012501B (Tx1), CAN4313986022501B (Tx2 or Rx2),

CAN4313986012501B(Tx3 or Rx3)

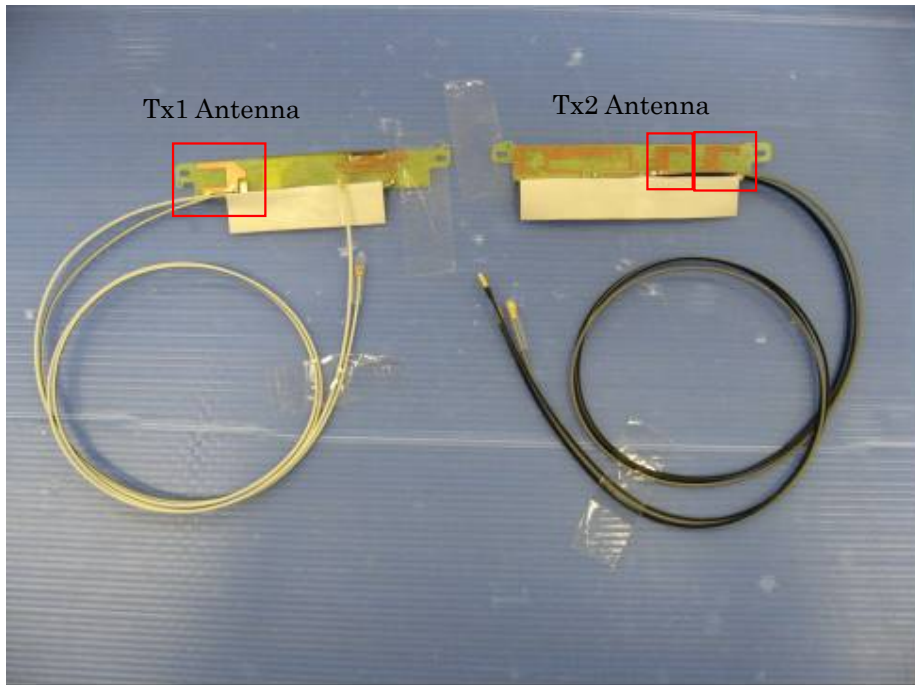


Include back view photo of all 2 antennas here.

Antenna Manufacturer: YAGEO

Antenna Part Number: CAN4313986012501B (Tx1), CAN4313986022501B (Tx2 or Rx2),

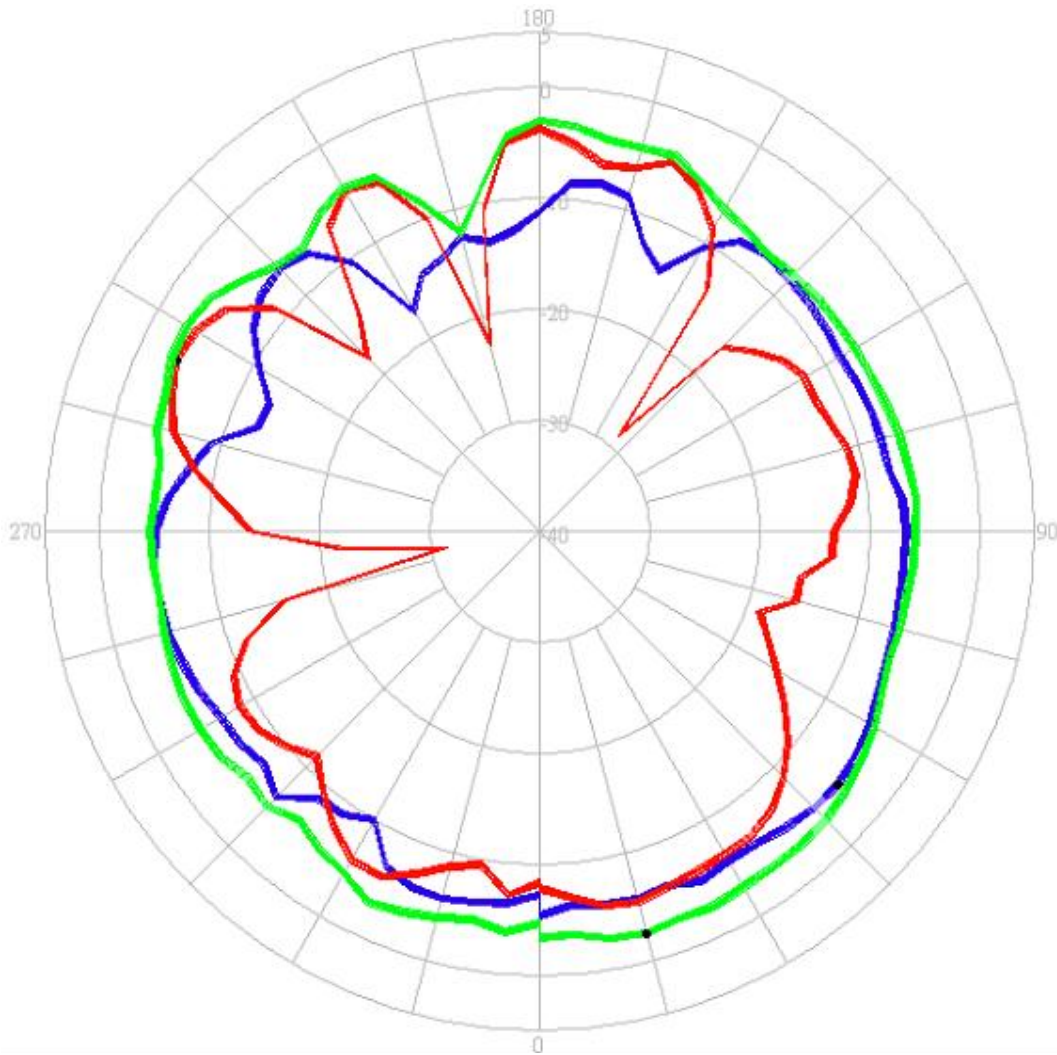
CAN4313986012501B(Tx3 or Rx3)



Section 3. Radiation characteristics of antennae Loaded in Host Platform

2400-2500MHz radiation characteristic

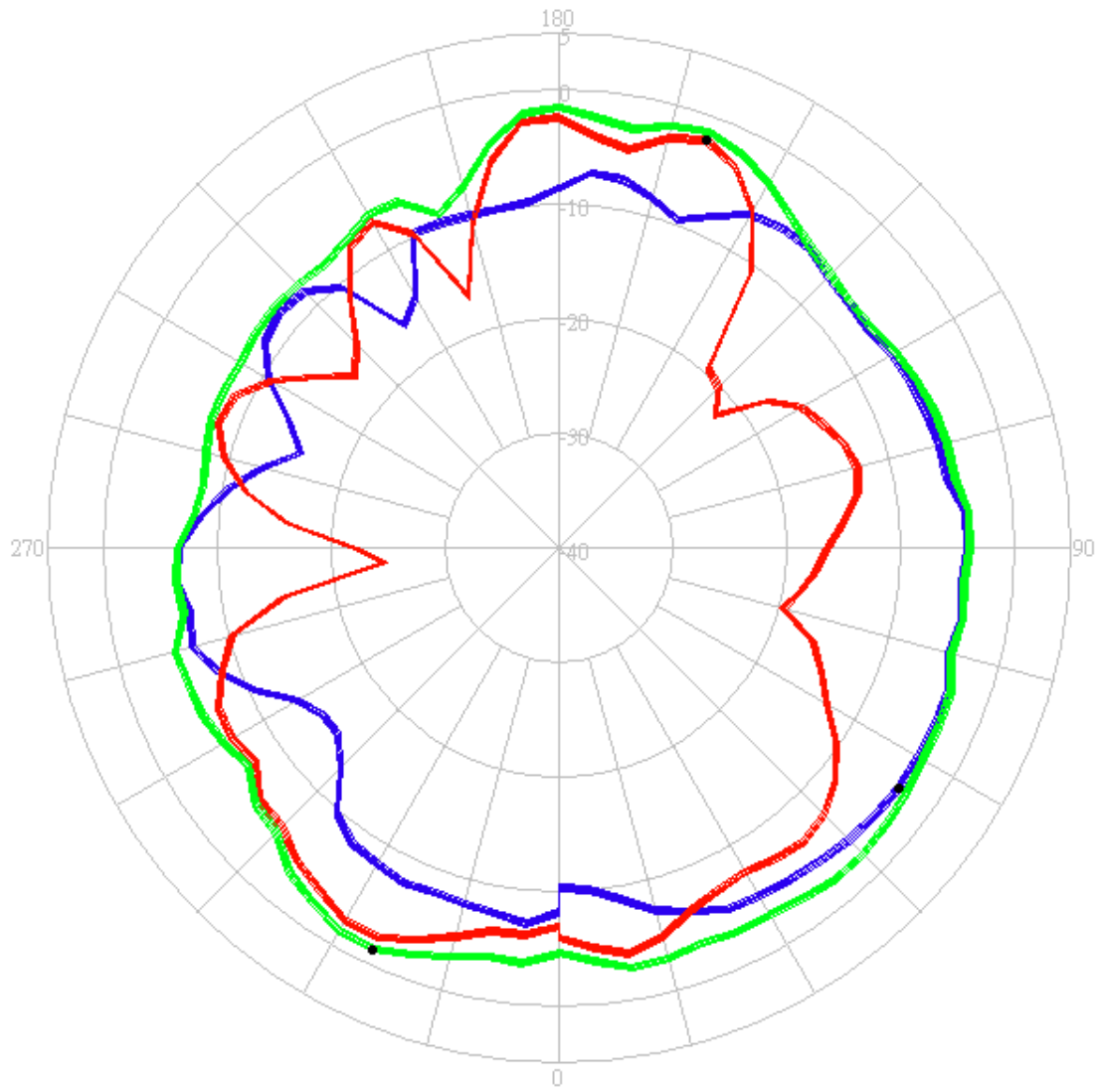
Tx1 antenna: 2400 MHz



- **Horizontal**
- **Vertical**
- **H+V**

Center Frequency	2400 MHz
Horizontal (dBi) peak	-4.57
Vertical (dBi) peak	-3.54

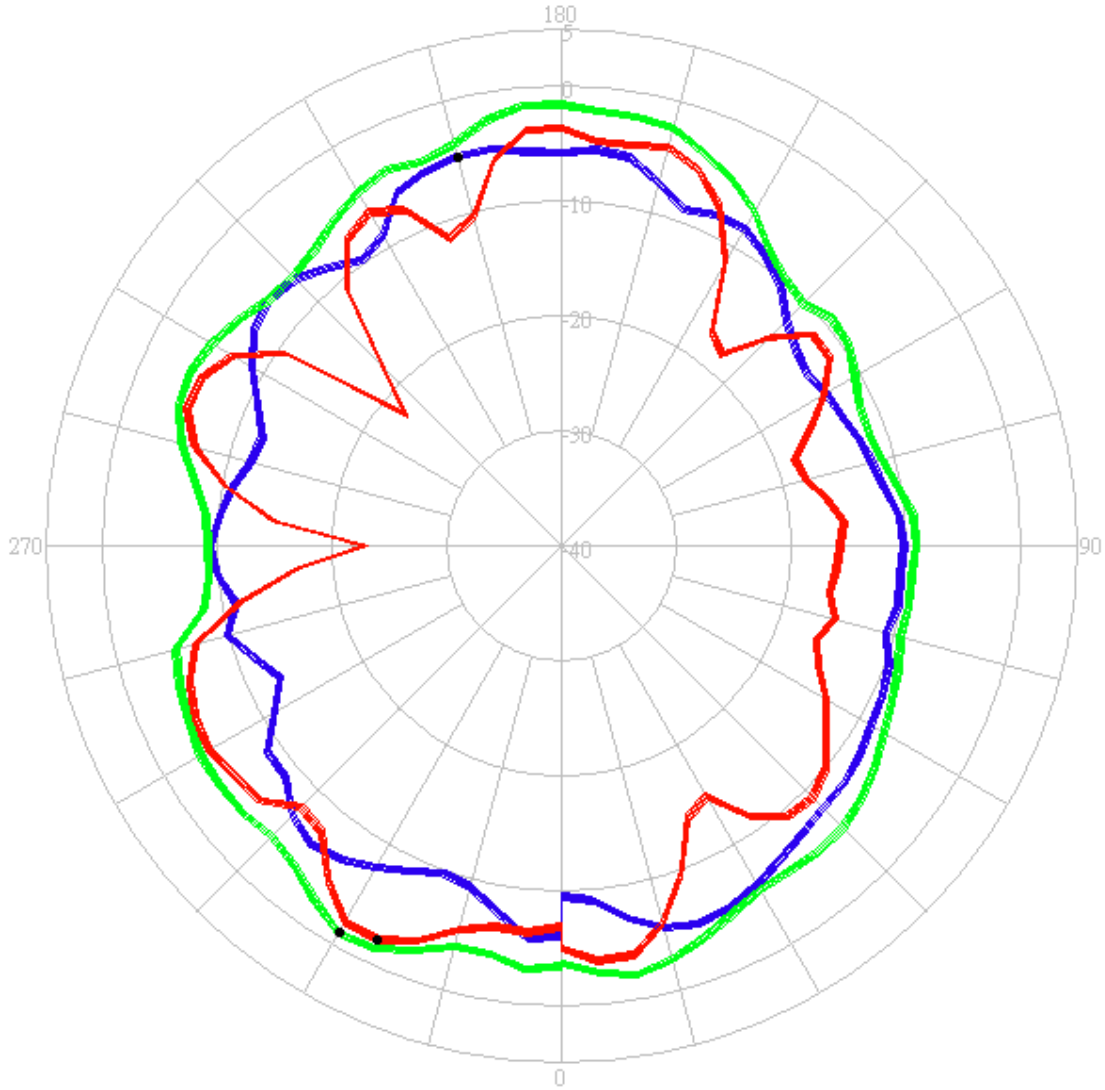
Tx1 antenna: 2450 MHz



- **Horizontal**
- **Vertical**
- **H+V**

Center Frequency	2450 MHz
Horizontal (dBi) peak	-3.49
Vertical (dBi) peak	-2.05

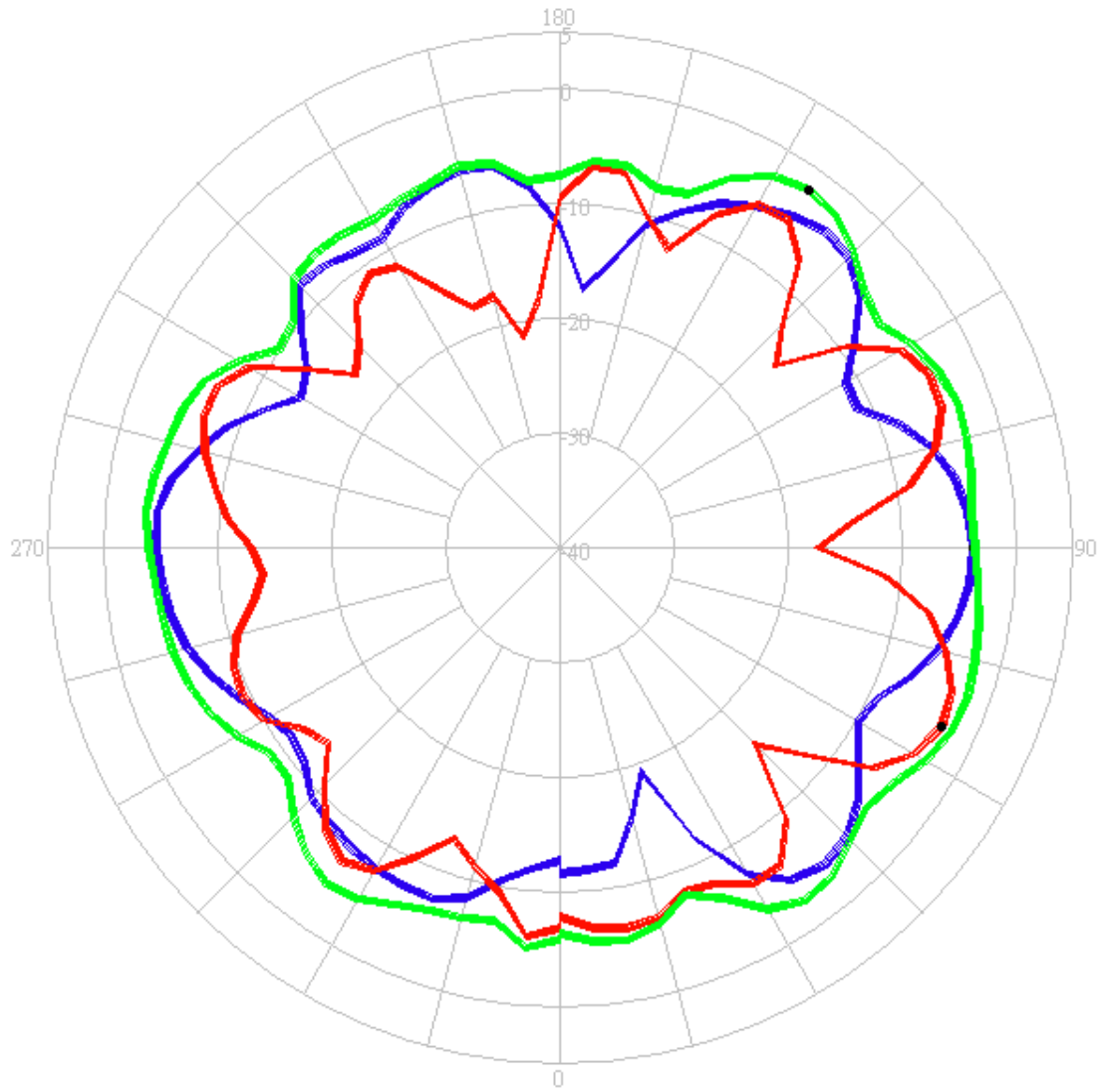
Tx1 antenna: 2500 MHz



- **Horizontal**
- **Vertical**
- **H+V**

Center Frequency	2500 MHz
Horizontal (dBi) peak	-4.90
Vertical (dBi) peak	-2.10

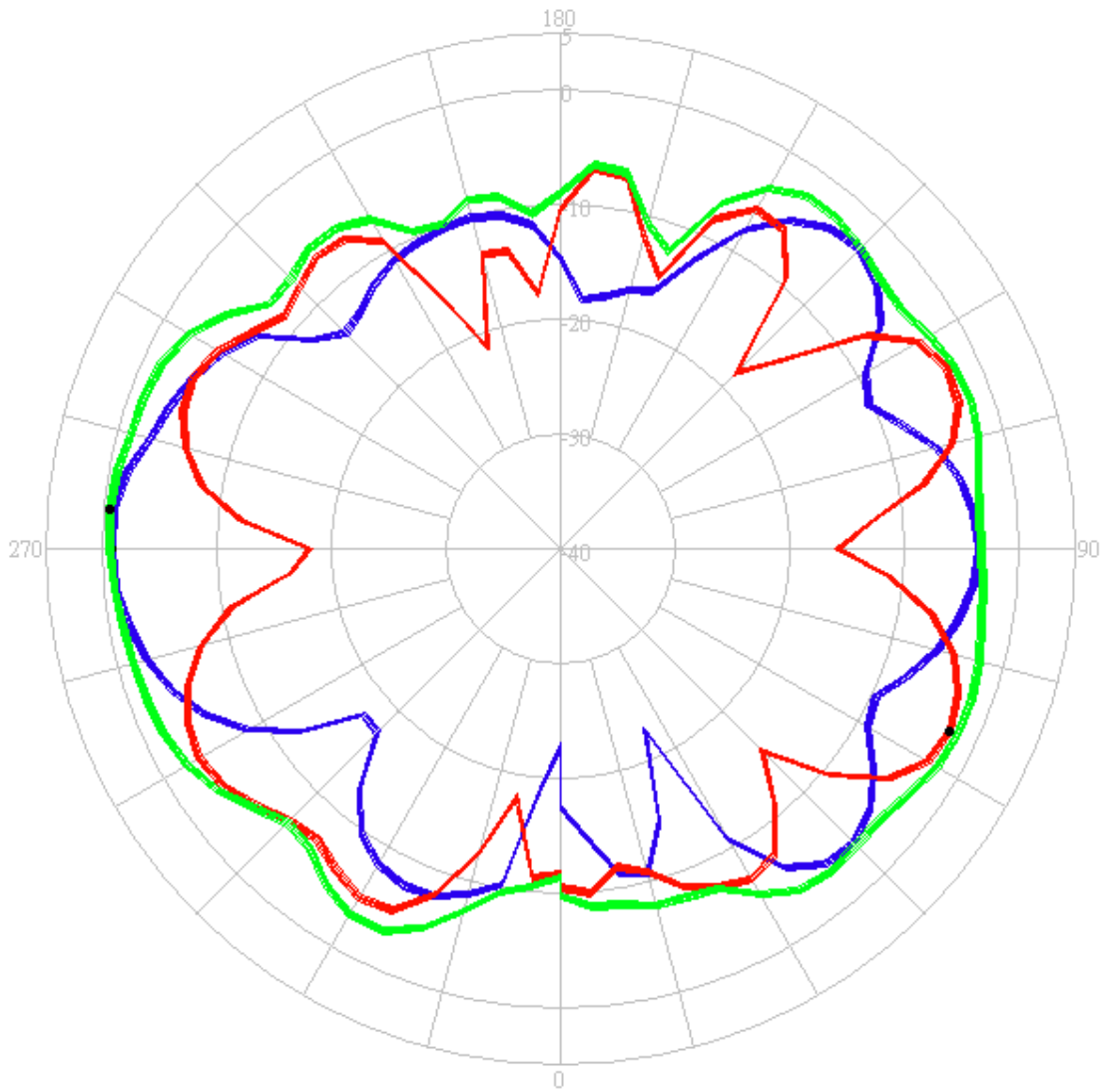
Tx2 (or Rx2) antenna: 2400 MHz (Plot is not required if 2nd Antenna is receive only e.g. Rx2 for 512 family) 2400 MHz



- **Horizontal**
- **Vertical**
- **H+V**

Center Frequency	2400 MHz
Horizontal (dBi) peak	-3.71
Vertical (dBi) peak	-3.05

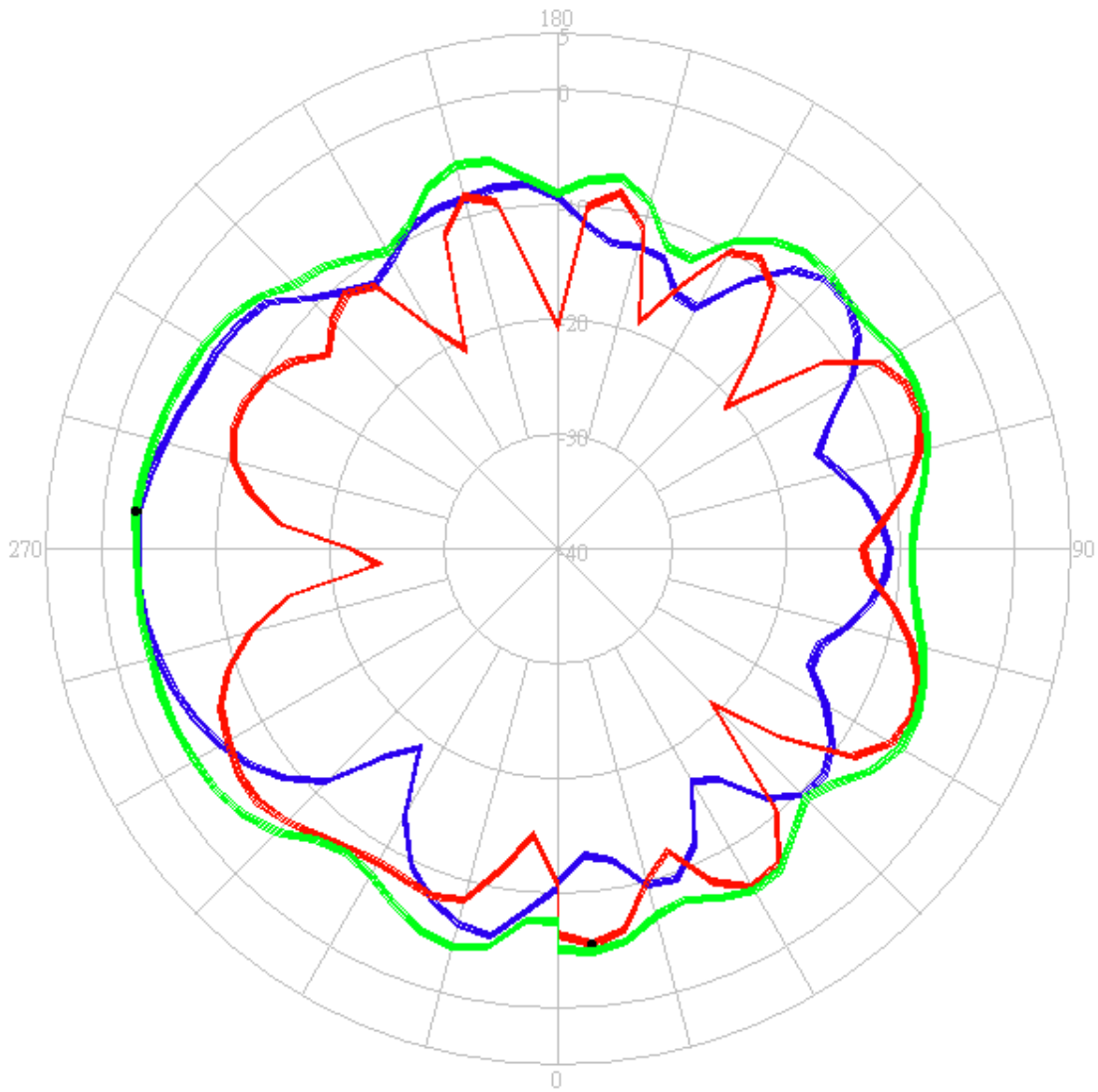
Tx2 (or Rx2) antenna: 2450 MHz (Plot is not required if 2nd Antenna is receive only e.g. Rx2 for 512 family) 2400 MHz



- **Horizontal**
- **Vertical**
- **H+V**

Center Frequency	2450 MHz
Horizontal (dBi) peak	-0.70
Vertical (dBi) peak	-2.42

Tx2 (or Rx2) antenna: 2500 MHz (Plot is not required if 2nd Antenna is receive only e.g. Rx2 for 512 family) 2400 MHz

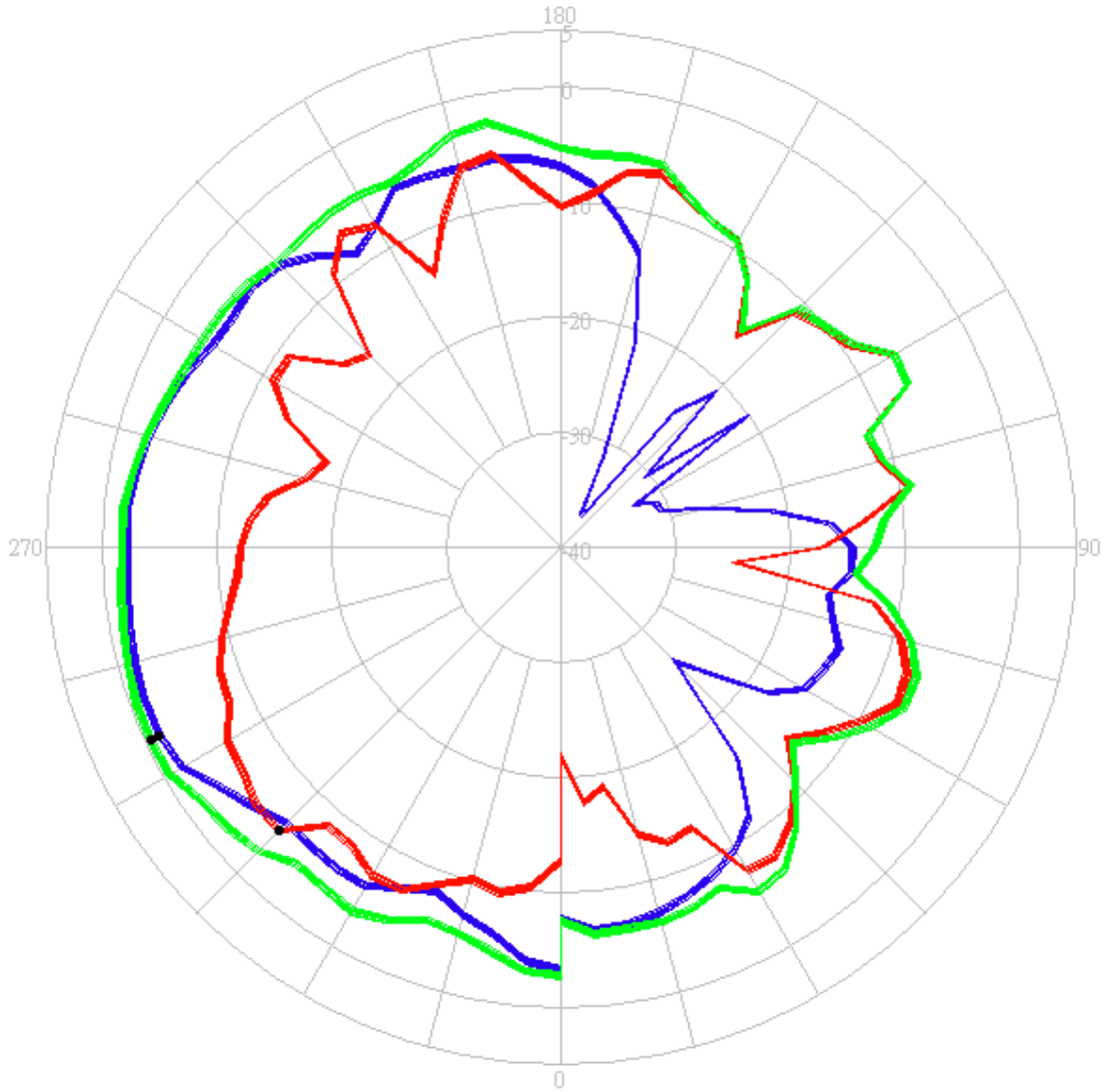


- **Horizontal**
- **Vertical**
- **H+V**

Center Frequency	2500 MHz
Horizontal (dBi) peak	-2.94
Vertical (dBi) peak	-5.36

\

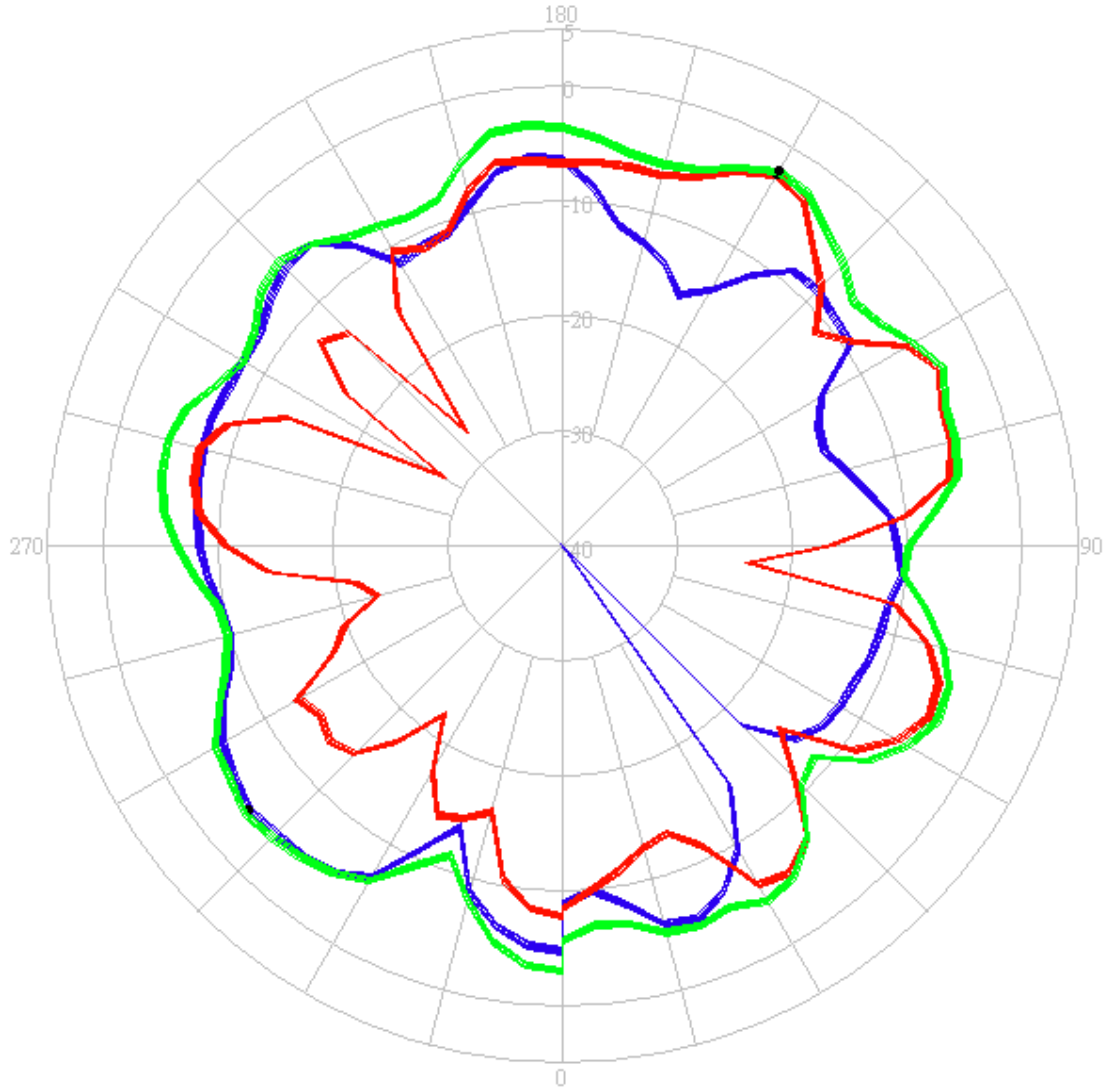
Tx3 (or Rx3) antenna: 2400 MHz (Plot is not required if 3rd Antenna is receive only e.g. Rx3 for 4965AGN)



- **Horizontal**
- **Vertical**
- **H+V**

Center Frequency	2400 MHz
Horizontal (dBi) peak	-1.27
Vertical (dBi) peak	-5.13

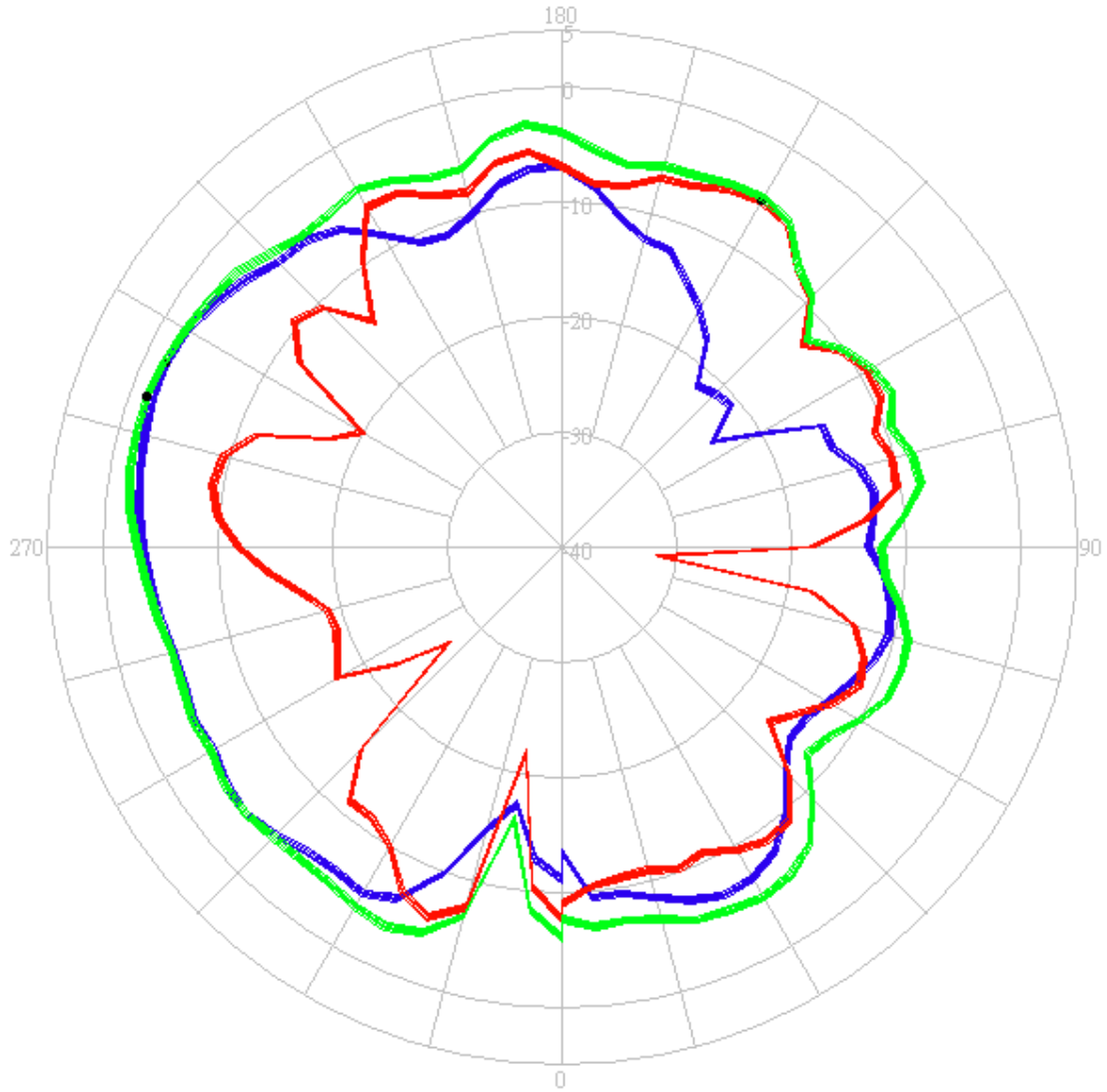
Tx3 (or Rx3) antenna: 2450 MHz (Plot is not required if 3rd Antenna is receive only e.g. Rx3 for 4965AGN)



- **Horizontal**
- **Vertical**
- **H+V**

Center Frequency	2450 MHz
Horizontal (dBi) peak	-4.26
Vertical (dBi) peak	-2.63

Tx3 (or Rx3) antenna: 2500 MHz (Plot is not required if 3rd Antenna is receive only e.g. Rx3 for 4965AGN)

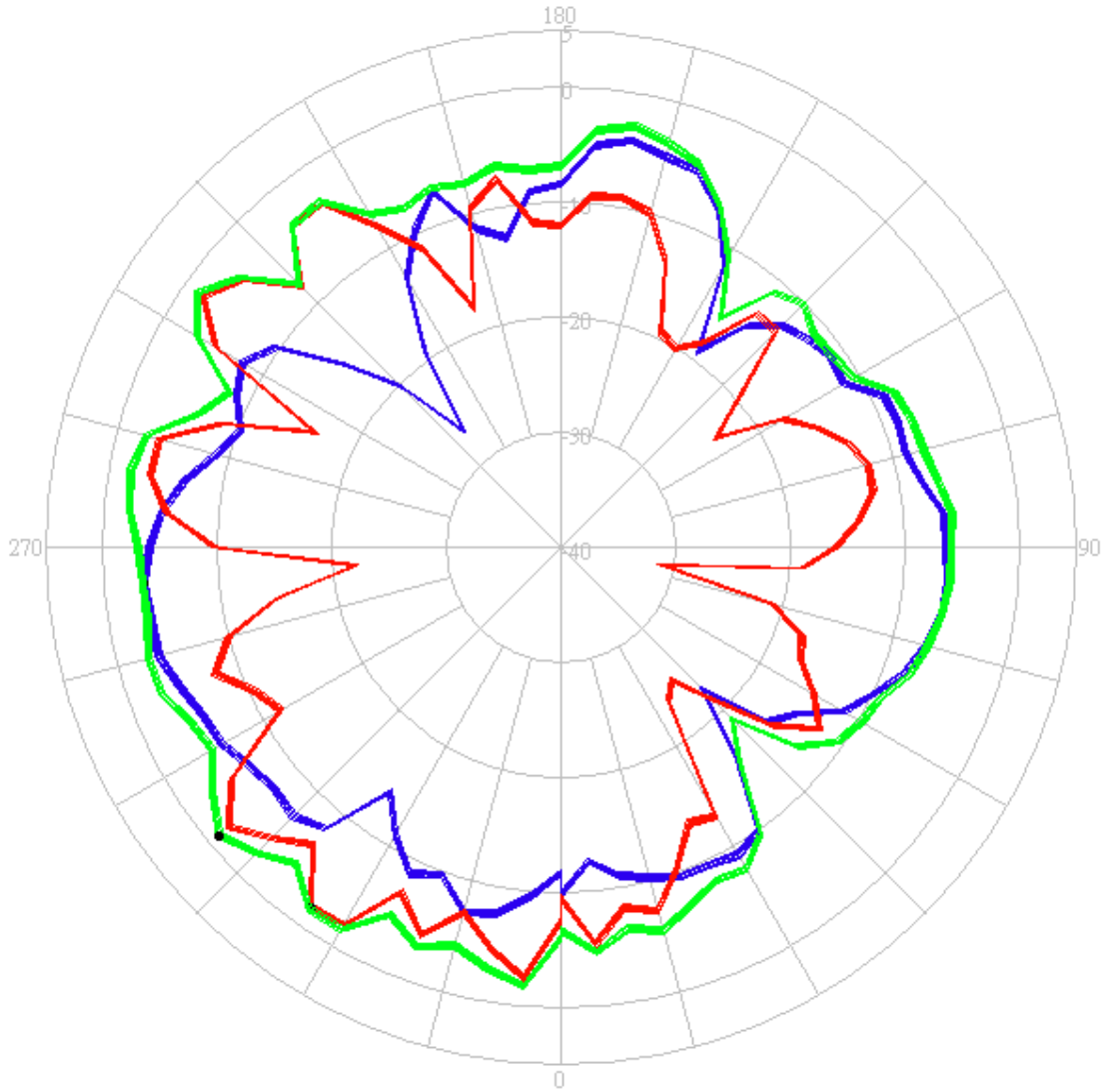


- **Horizontal**
- **Vertical**
- **H+V**

Center Frequency	2500 MHz
Horizontal (dBi) peak	-1.84
Vertical (dBi) peak	-5.12

5150-5350 MHz radiation characteristic

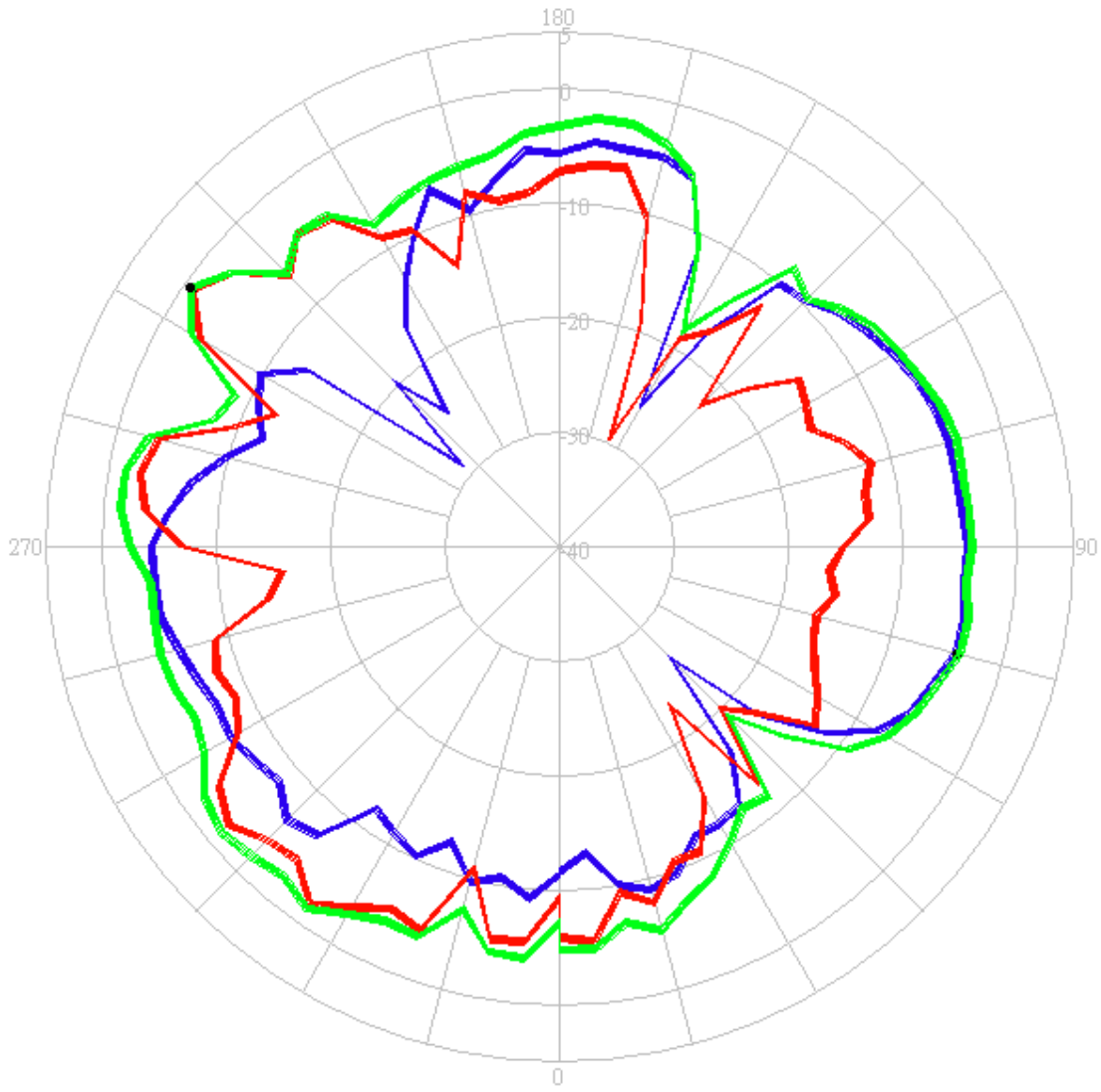
Tx1 antenna: 5150 MHz



- **Horizontal**
- **Vertical**
- **H+V**

Center Frequency	5150 MHz
Horizontal (dBi) peak	-3.35
Vertical (dBi) peak	-1.79

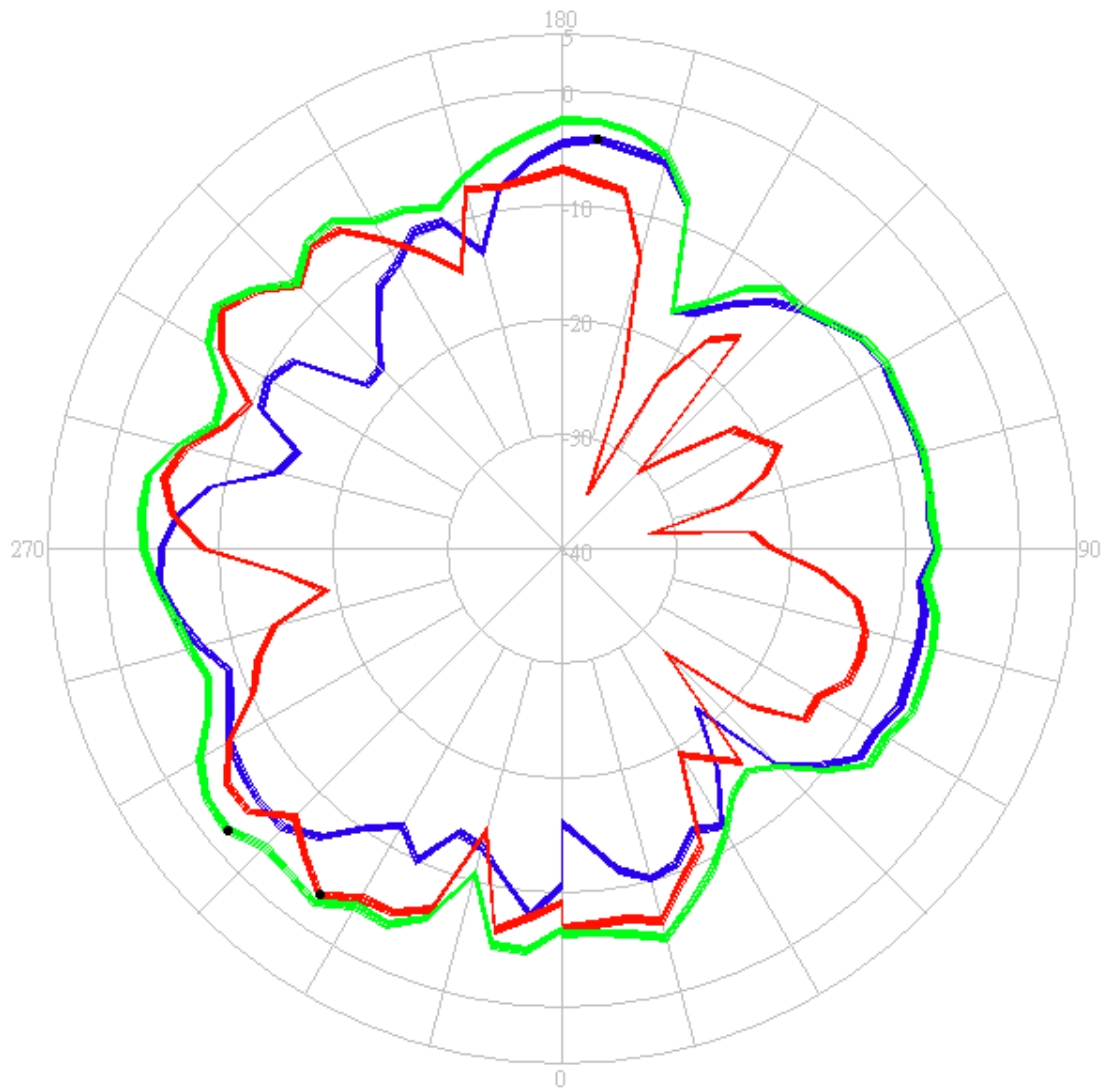
Tx1 antenna: 5250 MHz



- **Horizontal**
- **Vertical**
- **H+V**

Center Frequency	5250 MHz
Horizontal (dBi) peak	-3.93
Vertical (dBi) peak	-0.80

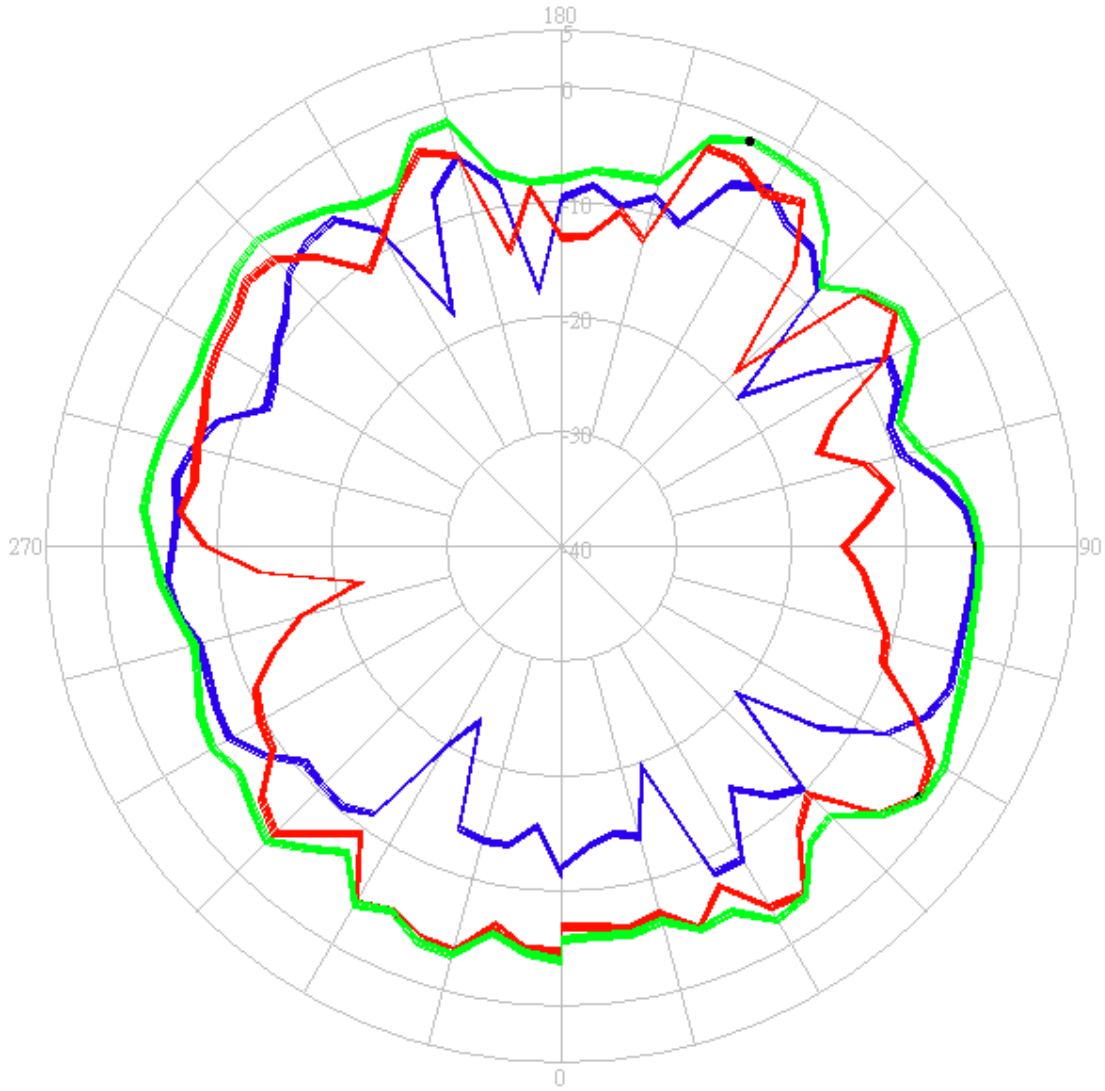
Tx1 antenna: 5350 MHz



- **Horizontal**
- **Vertical**
- **H+V**

Center Frequency	5350 MHz
Horizontal (dBi) peak	-4.02
Vertical (dBi) peak	-3.03

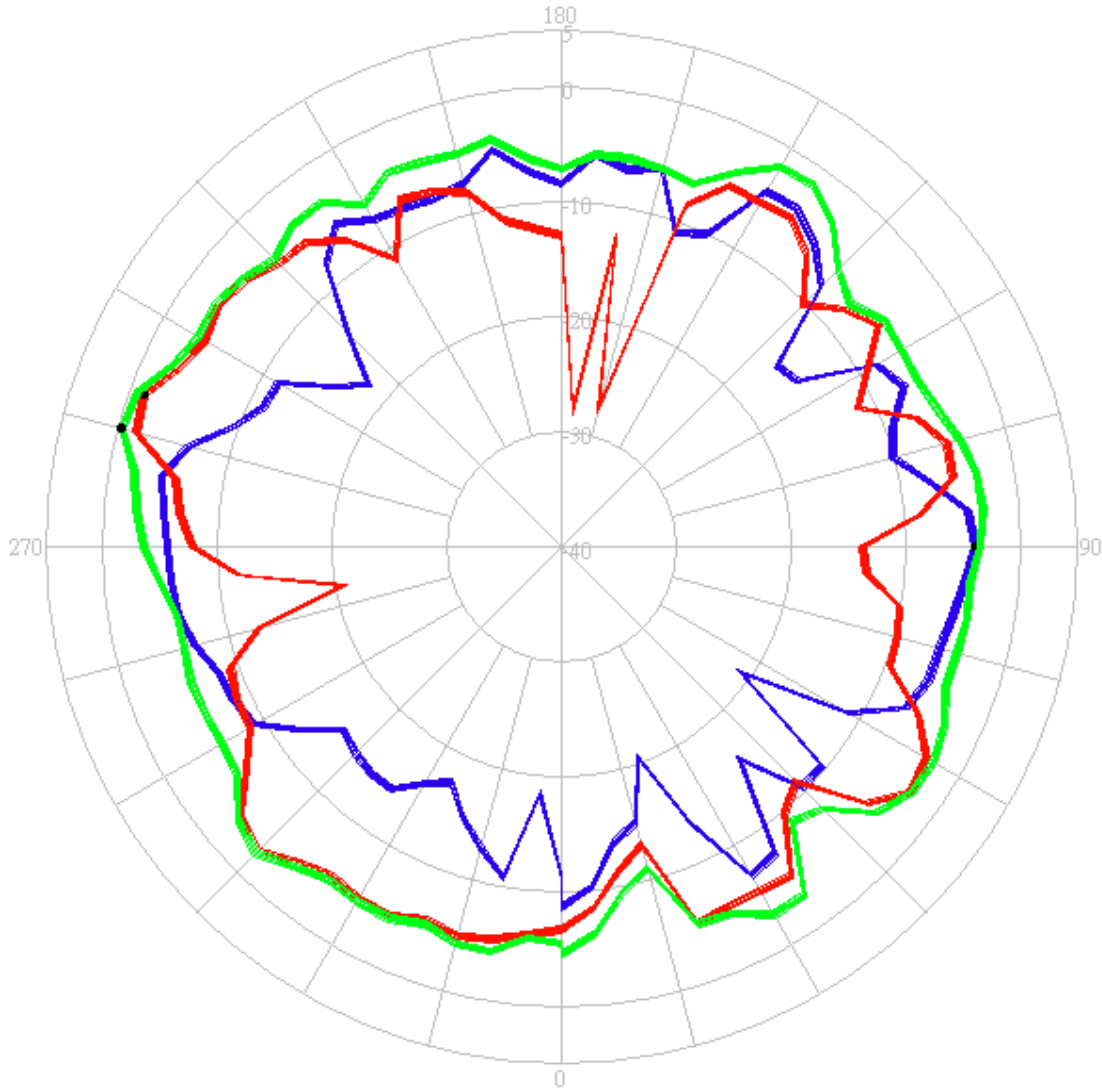
Tx2 (or Rx2) antenna: 5150 MHz (Plot is not required if 2nd Antenna is receive only e.g. Rx2 for 512 family) 5150 MHz



- **Horizontal**
- **Vertical**
- **H+V**

Center Frequency	5150 MHz
Horizontal (dBi) peak	-3.72
Vertical (dBi) peak	-1.90

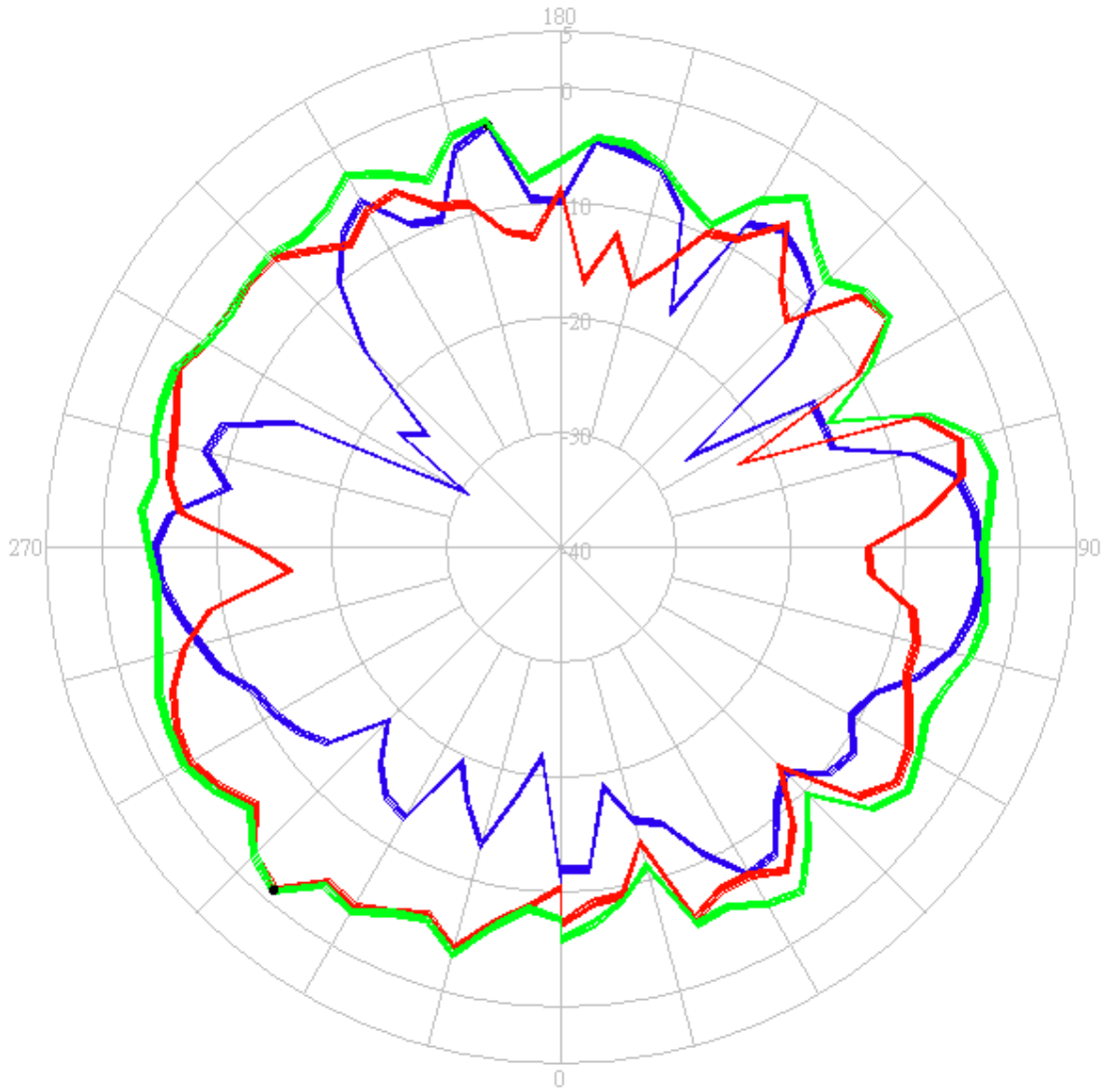
Tx2 (or Rx2) antenna: 5250 MHz (Plot is not required if 2nd Antenna is receive only e.g. Rx2 for 512 family) 5150 MHz



- **Horizontal**
- **Vertical**
- **H+V**

Center Frequency	5250 MHz
Horizontal (dBi) peak	-3.86
Vertical (dBi) peak	-1.90

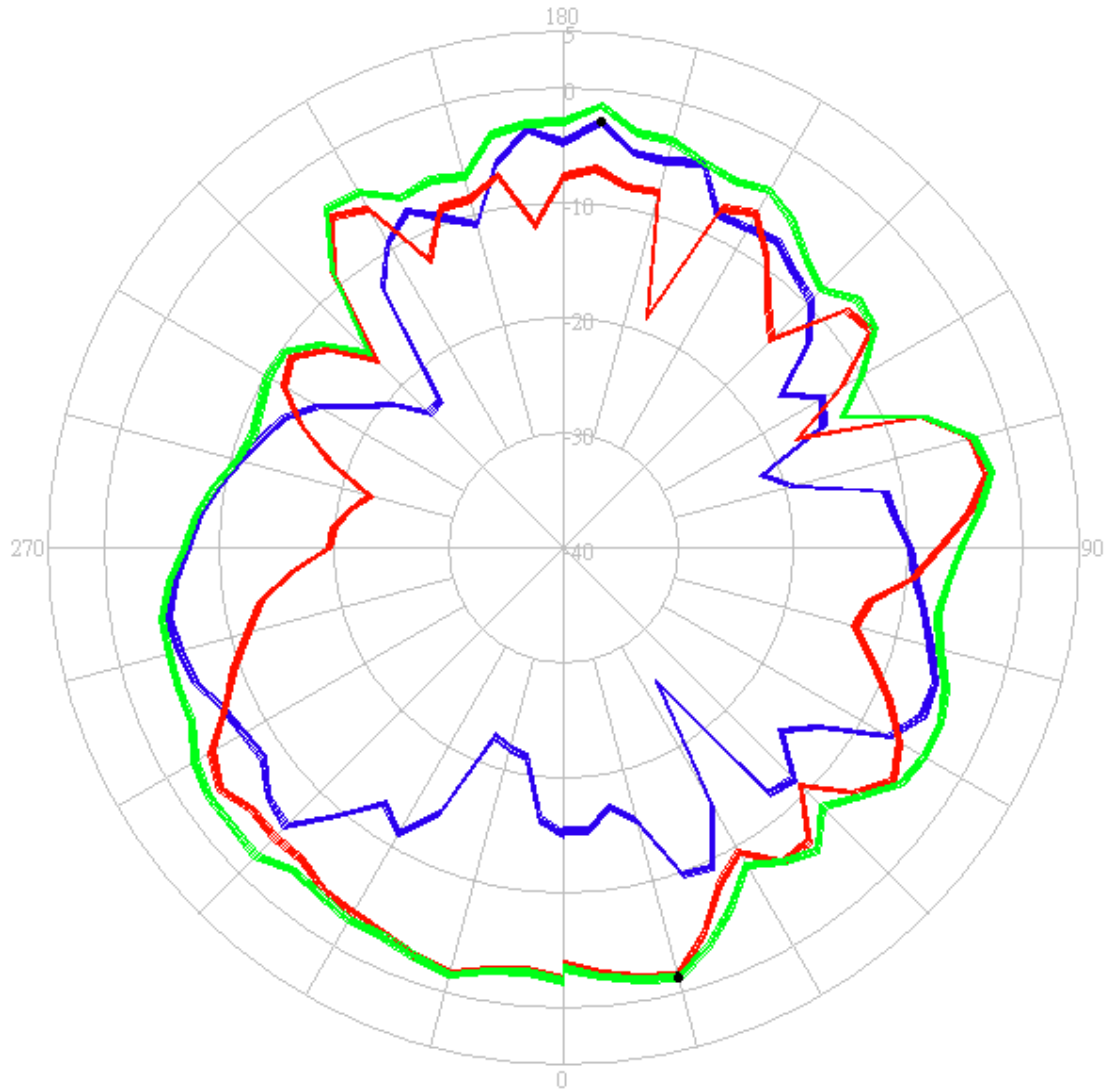
Tx2 (or Rx2) antenna: 5350 MHz (Plot is not required if 2nd Antenna is receive only e.g. Rx2 for 512 family) 5150 MHz



- **Horizontal**
- **Vertical**
- **H+V**

Center Frequency	5350 MHz
Horizontal (dBi) peak	-2.67
Vertical (dBi) peak	-1.08

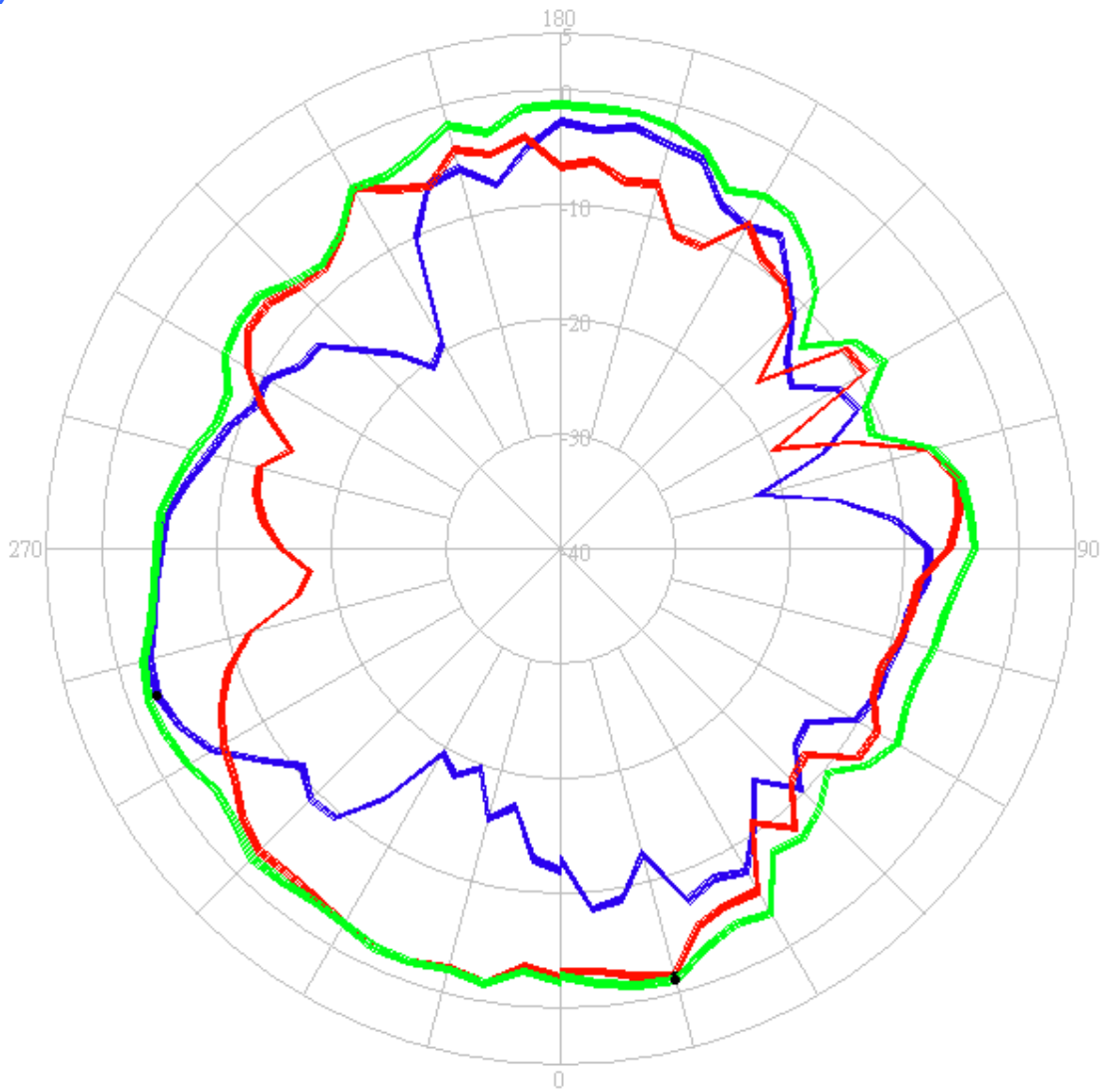
Tx3 (or Rx3) antenna: 5150 MHz (Plot is not required if 3rd Antenna is receive only e.g. Rx3 for 4965AGN)



- **Horizontal**
- **Vertical**
- **H+V**

Center Frequency	5150 MHz
Horizontal (dBi) peak	-2.75
Vertical (dBi) peak	-1.44

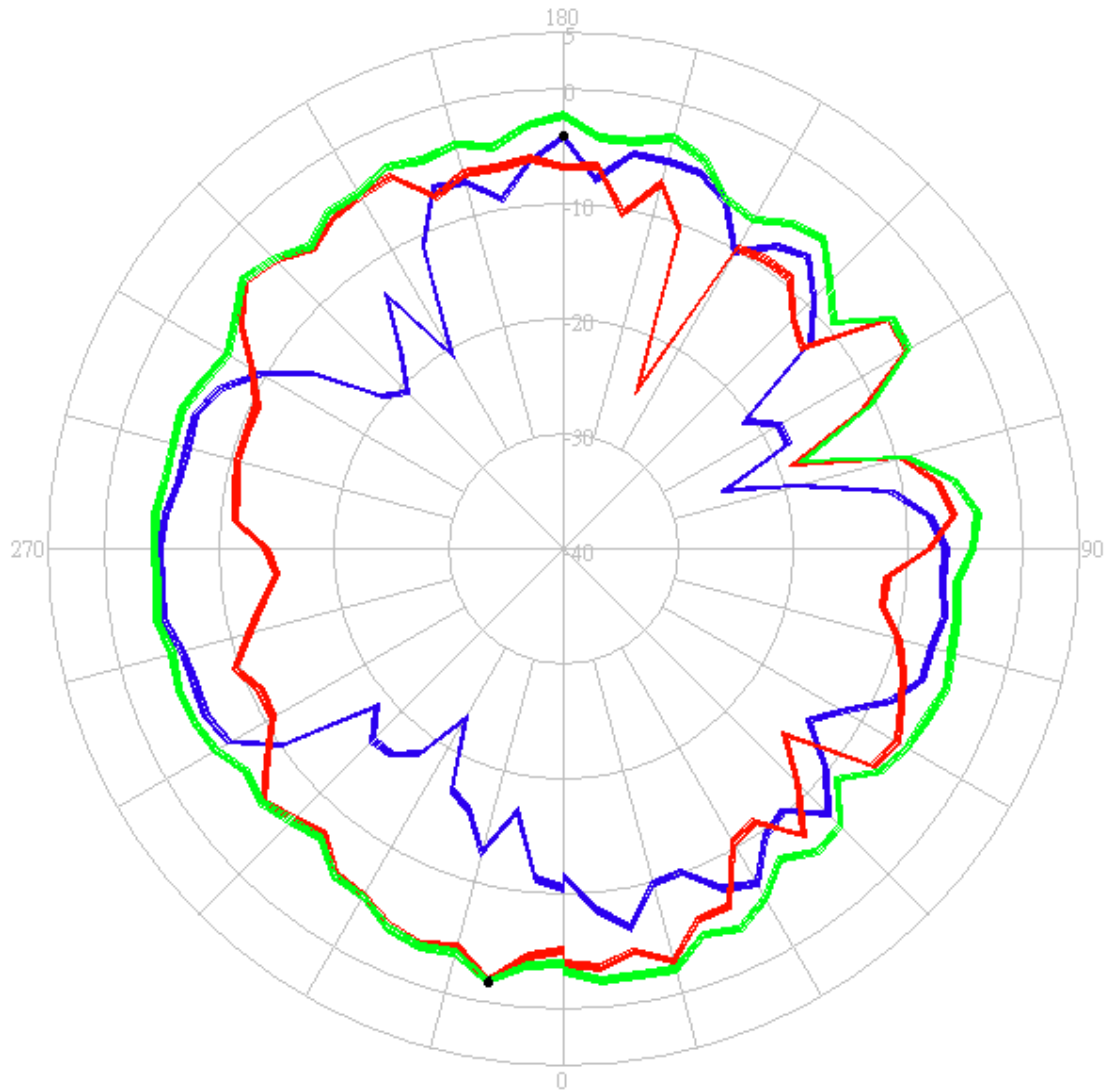
Tx3 (or Rx3) antenna: 5250 MHz (Plot is not required if 3rd Antenna is receive only e.g. Rx3 for 4965AGN)



- **Horizontal**
- **Vertical**
- **H+V**

Center Frequency	5250 MHz
Horizontal (dBi) peak	-2.51
Vertical (dBi) peak	-1.39

Tx3 (or Rx3) antenna: 5350 MHz (Plot is not required if 3rd Antenna is receive only e.g. Rx3 for 4965AGN)

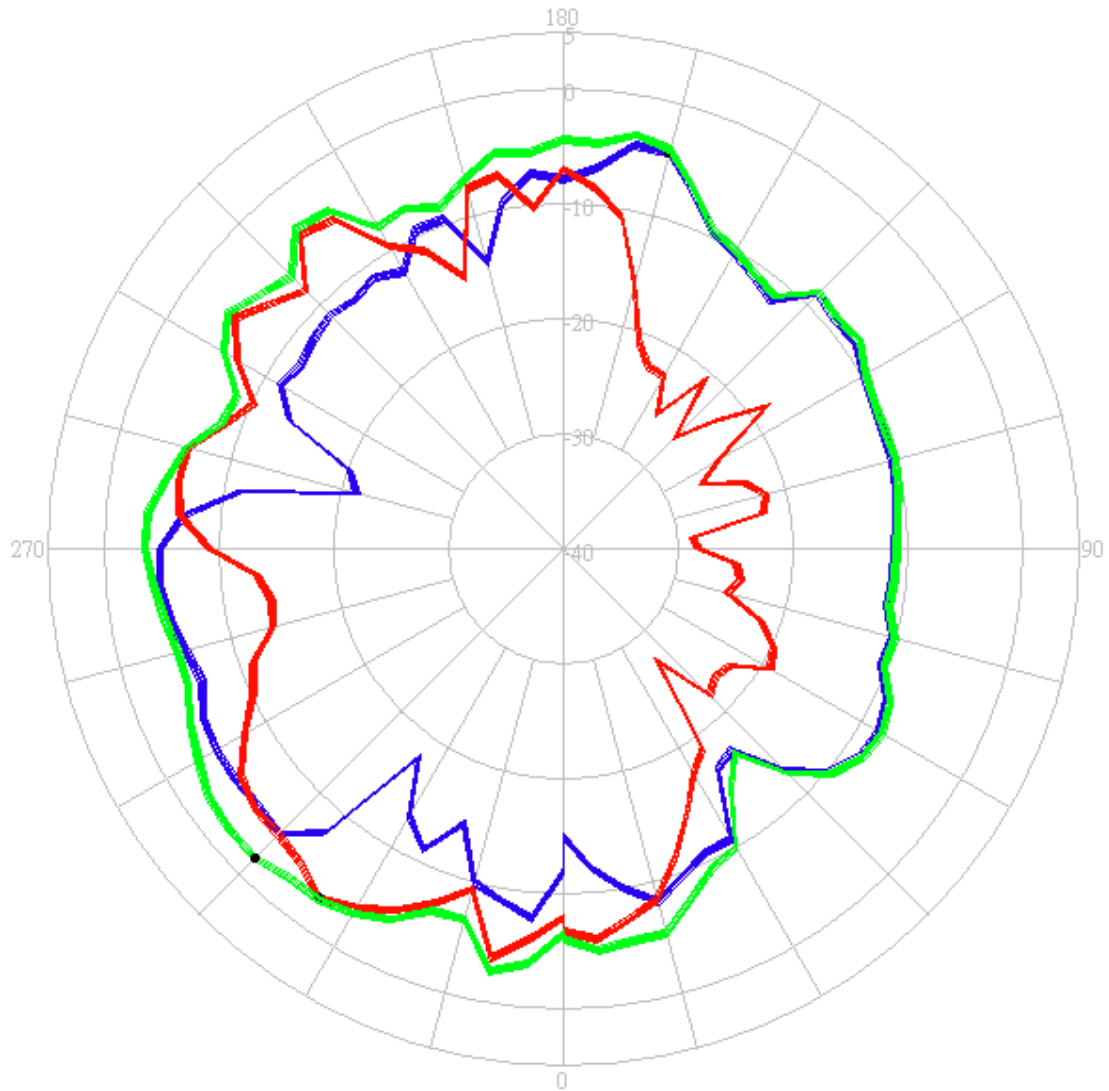


- **Horizontal**
- **Vertical**
- **H+V**

Center Frequency	5350 MHz
Horizontal (dBi) peak	-4.10
Vertical (dBi) peak	-1.86

5470-5725MHz radiation characteristic

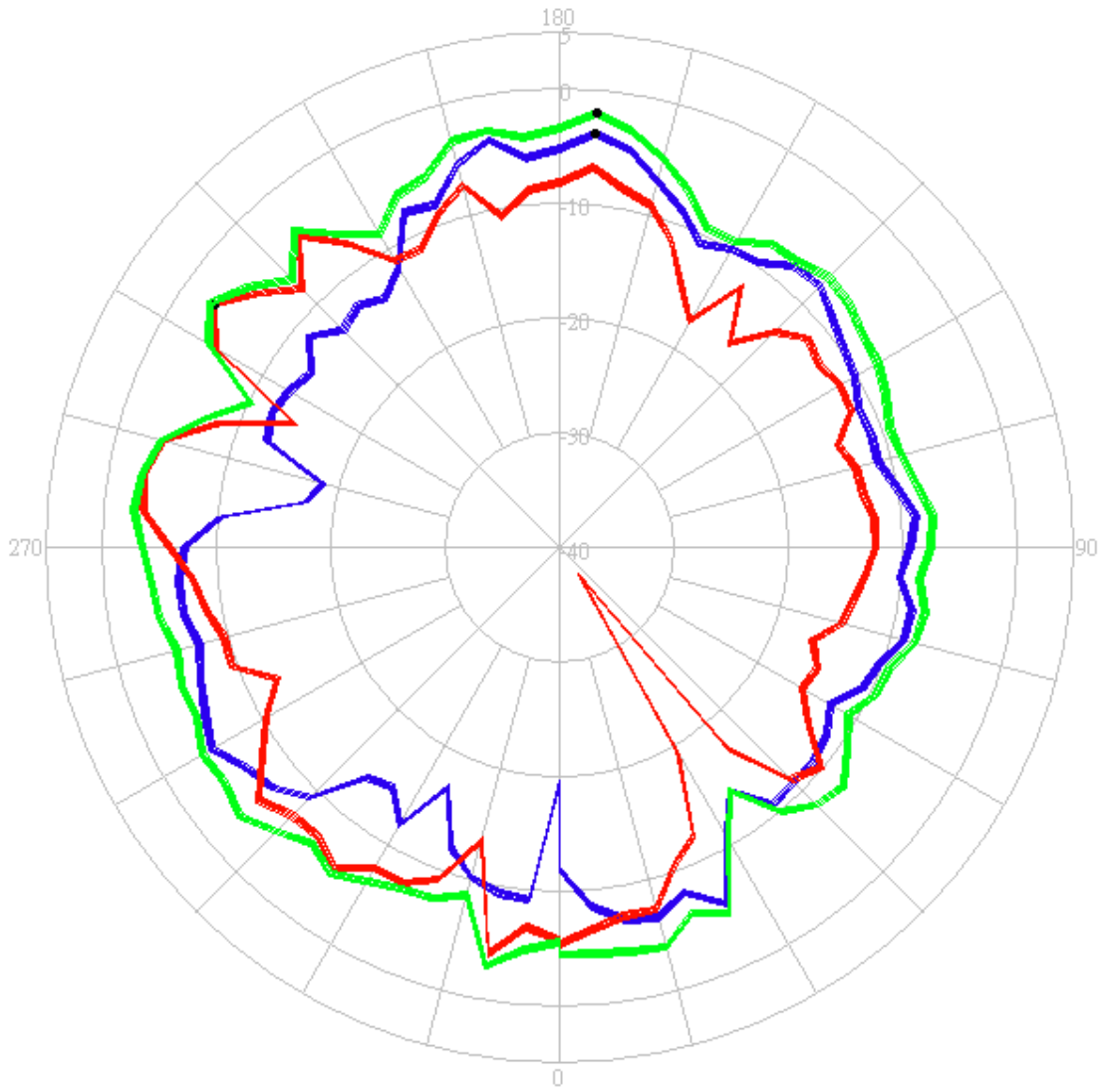
Tx1 antenna: 5470 MHz



- **Horizontal**
- **Vertical**
- **H+V**

Center Frequency	5470 MHz
Horizontal (dBi) peak	-4.26
Vertical (dBi) peak	-2.82

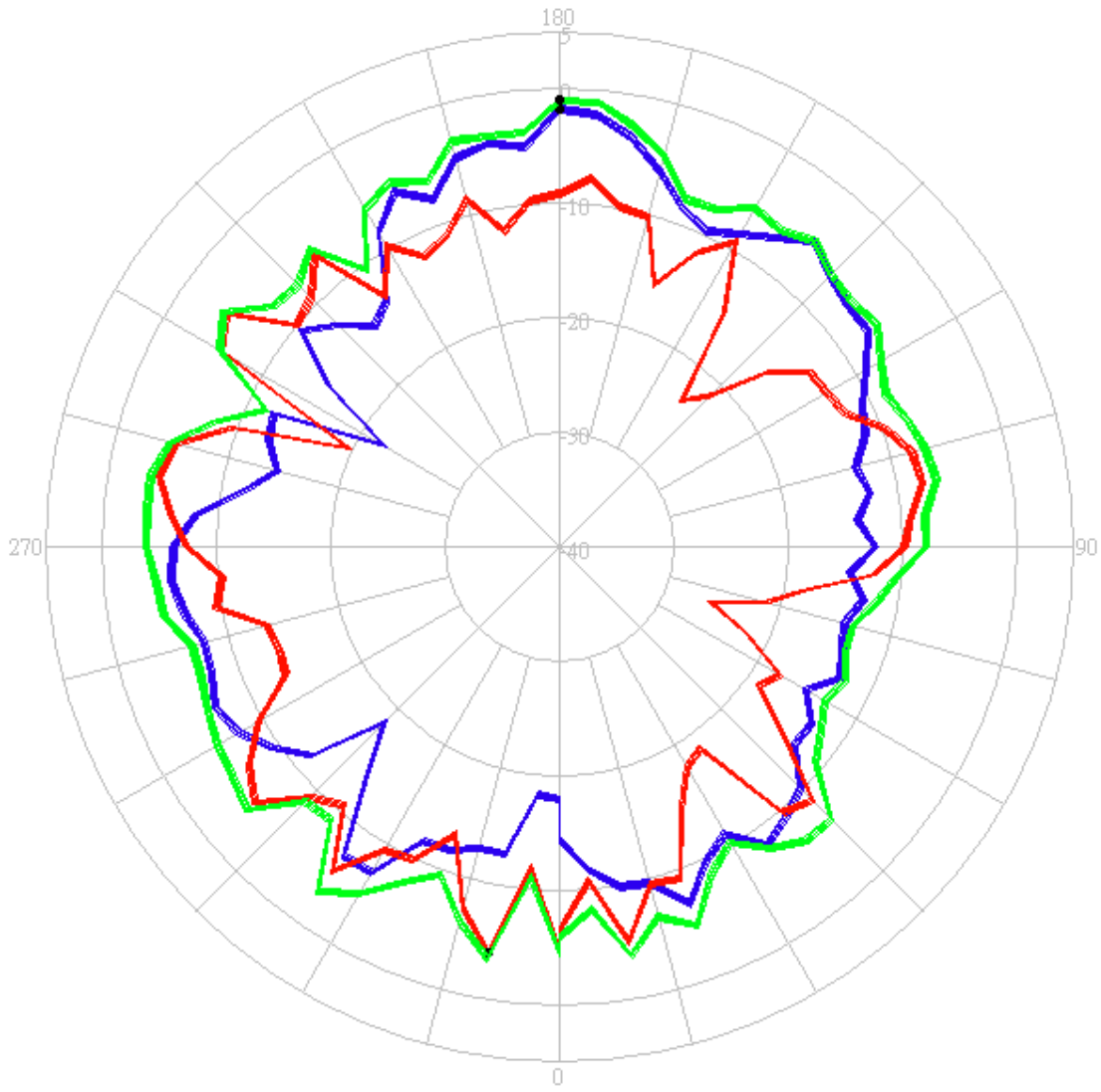
Tx1 antenna: 5600 MHz



- **Horizontal**
- **Vertical**
- **H+V**

Center Frequency	5600 MHz
Horizontal (dBi) peak	-3.70
Vertical (dBi) peak	-3.04

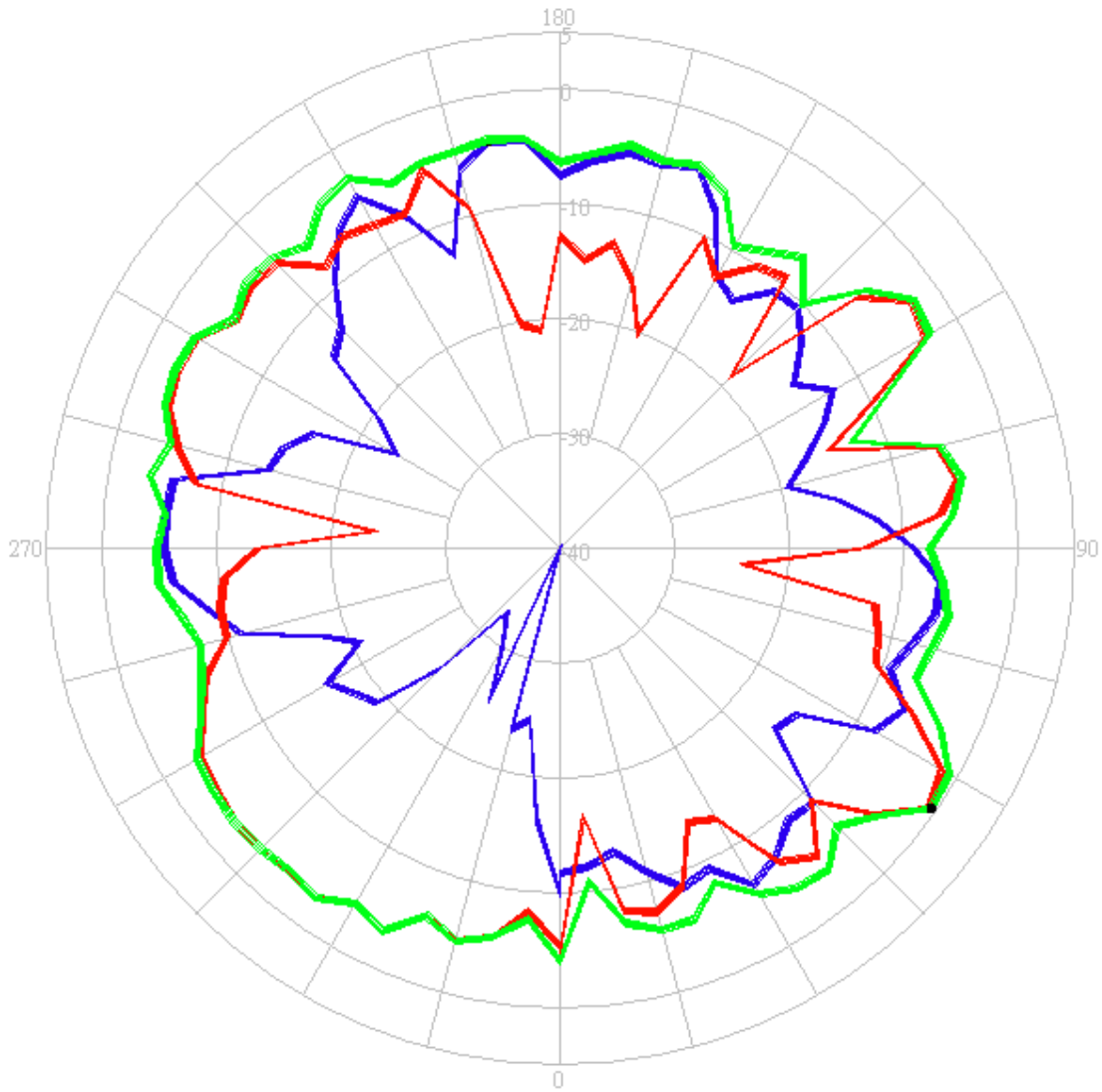
Tx1 antenna: 5725MHz



- **Horizontal**
- **Vertical**
- **H+V**

Center Frequency	5725 MHz
Horizontal (dBi) peak	-1.71
Vertical (dBi) peak	-4.00

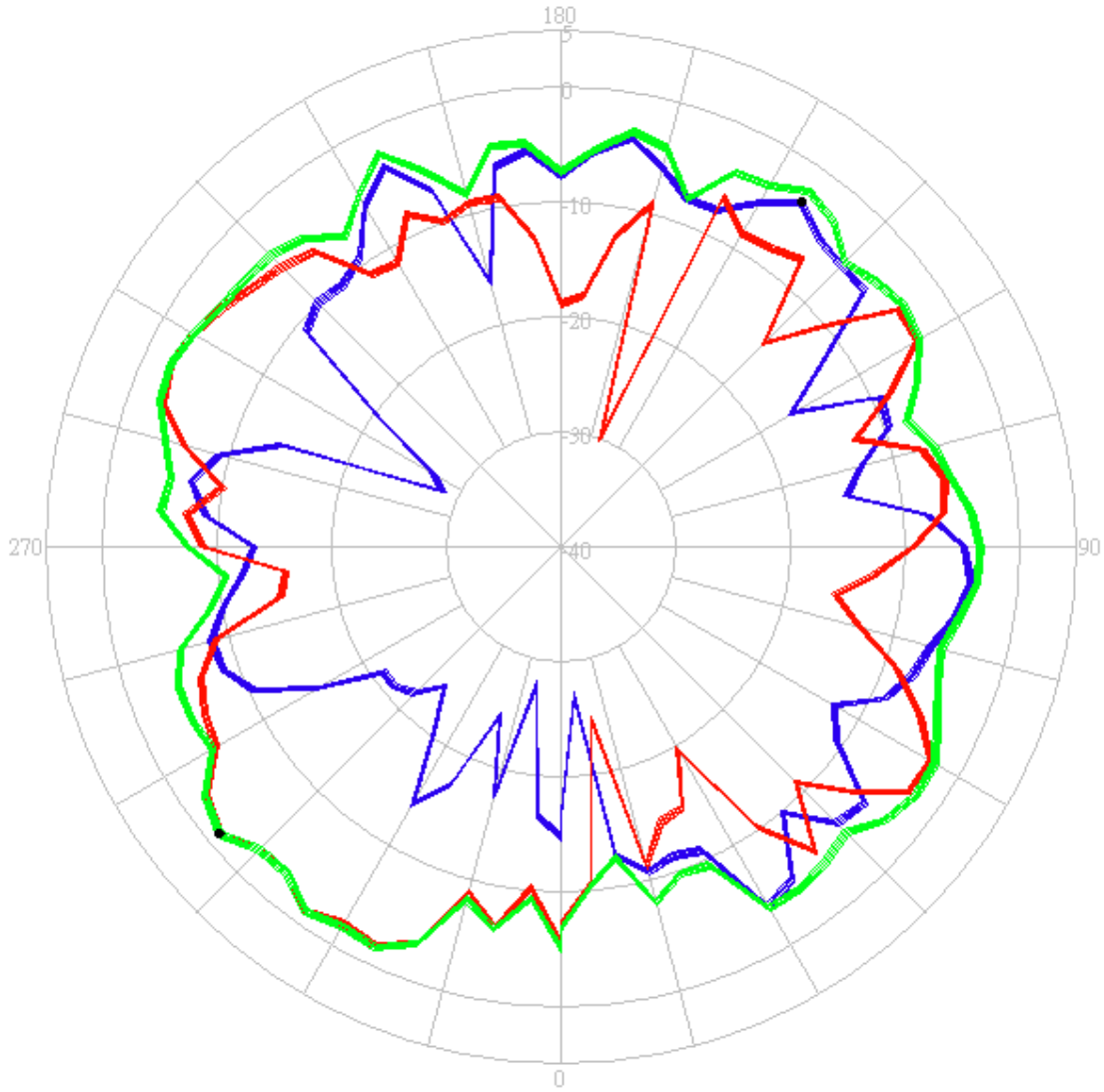
Tx2 (or Rx2) antenna: 5470 MHz (Plot is not required if 2nd Antenna is receive only e.g. Rx2 for 512 family)



- **Horizontal**
- **Vertical**
- **H+V**

Center Frequency	5470 MHz
Horizontal (dBi) peak	-3.94
Vertical (dBi) peak	-0.53

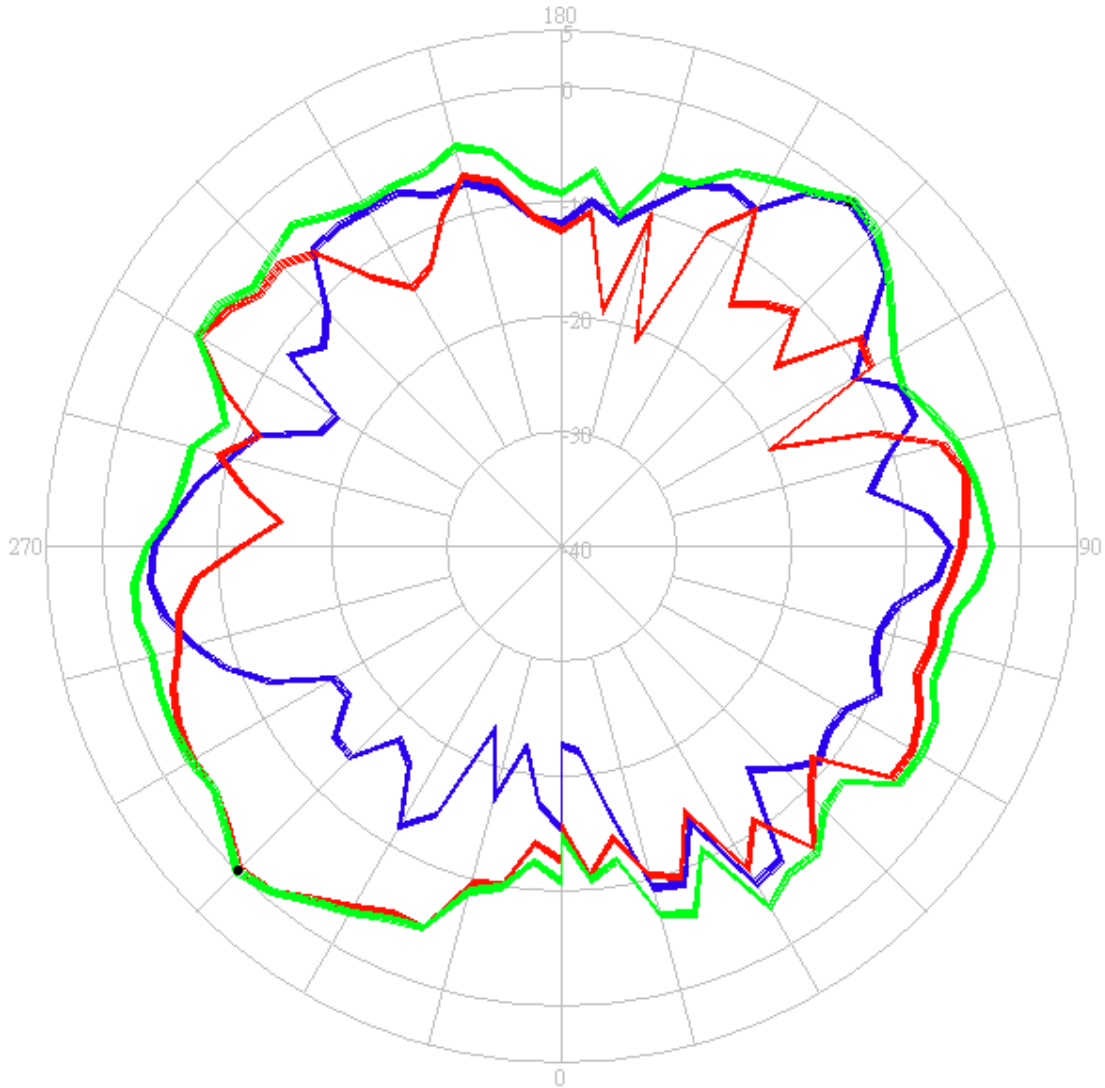
Tx2 (or Rx2) antenna: 5600 MHz (Plot is not required if 2nd Antenna is receive only e.g. Rx2 for 512 family)



- **Horizontal**
- **Vertical**
- **H+V**

Center Frequency	5600 MHz
Horizontal (dBi) peak	-3.34
Vertical (dBi) peak	-1.12

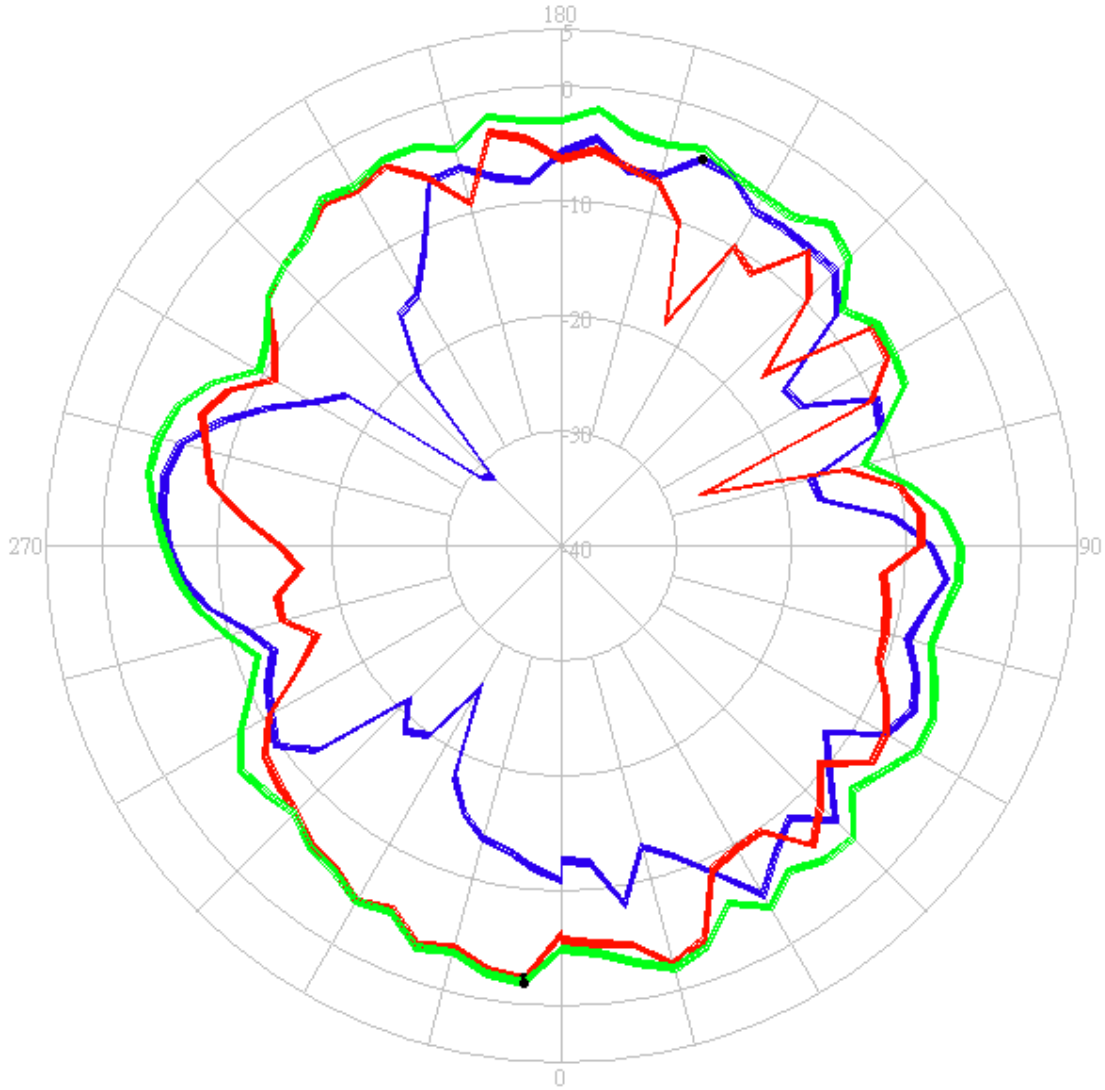
Tx2 (or Rx2) antenna: 5725 MHz (Plot is not required if 2nd Antenna is receive only e.g. Rx2 for 512 family)



- **Horizontal**
- **Vertical**
- **H+V**

Center Frequency	5725 MHz
Horizontal (dBi) peak	-0.82
Vertical (dBi) peak	-0.15

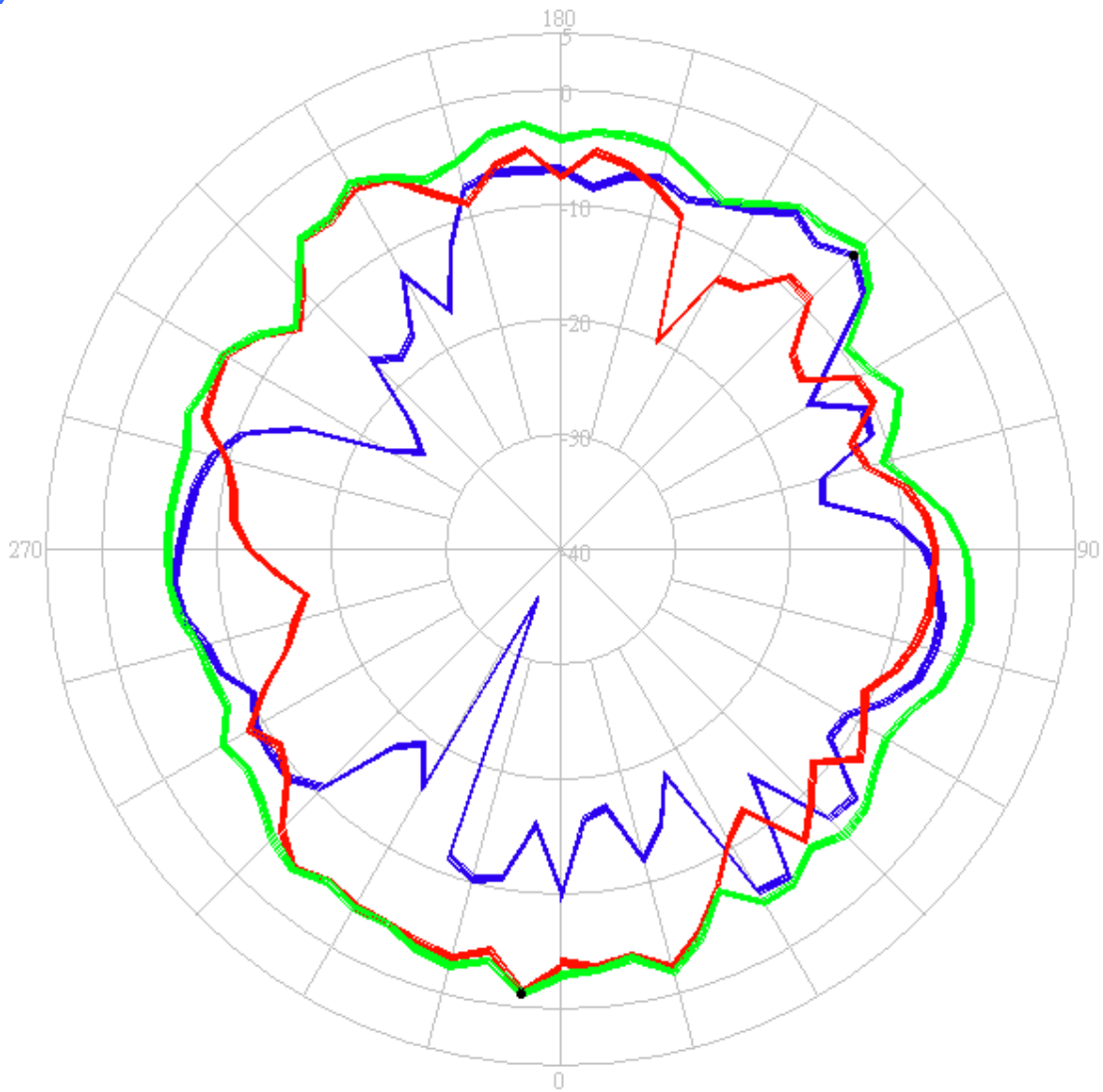
Tx3 (or Rx3): 5470 MHz (Plot is not required if 3rd Antenna is receive only e.g. Rx3 for 4965AGN)



- **Horizontal**
- **Vertical**
- **H+V**

Center Frequency	5470 MHz
Horizontal (dBi) peak	-4.16
Vertical (dBi) peak	-2.18

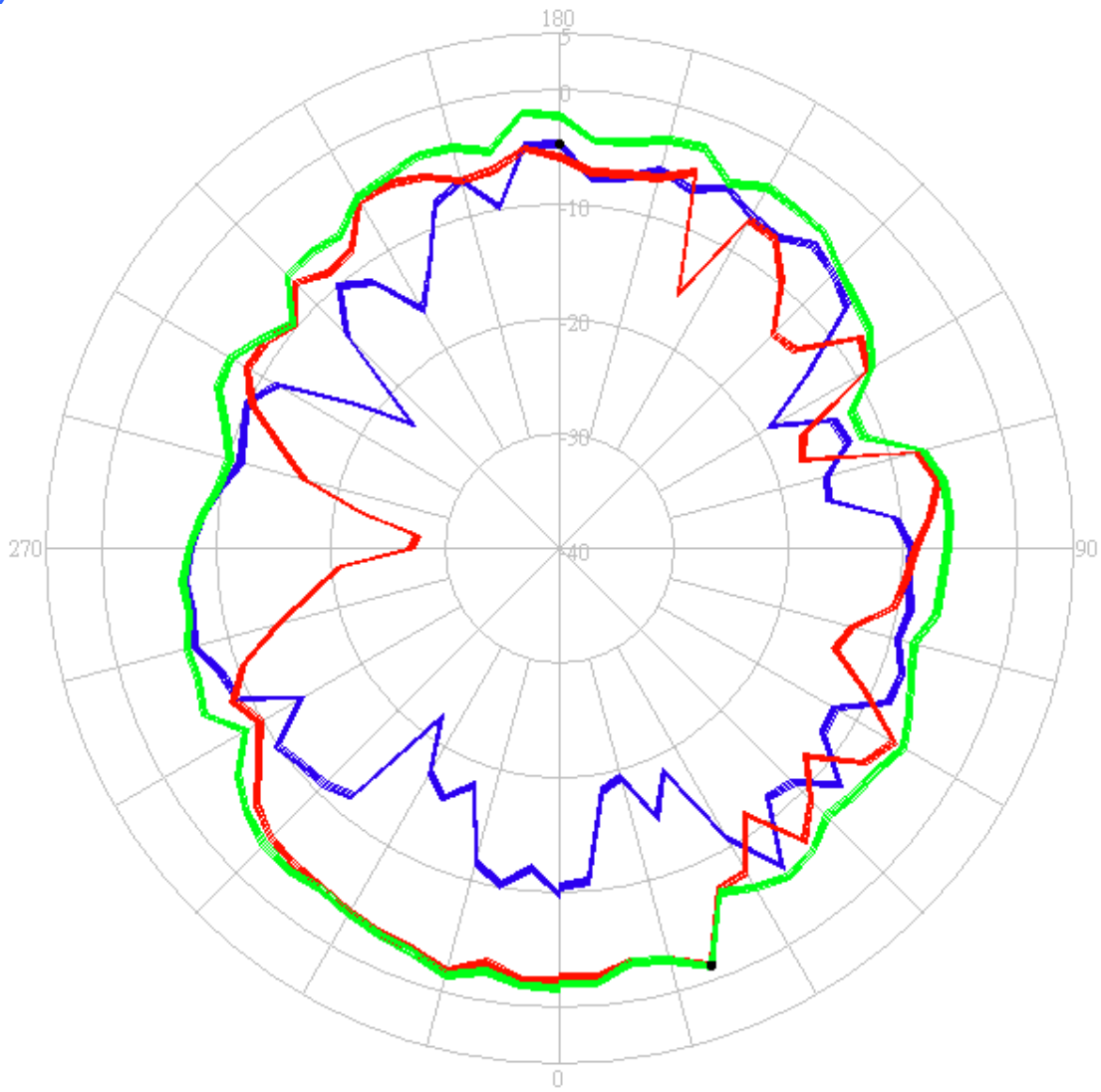
Tx3 (or Rx3) antenna: 5600 MHz (Plot is not required if 3rd Antenna is receive only e.g. Rx3 for 4965AGN)



- **Horizontal**
- **Vertical**
- **H+V**

Center Frequency	5600 MHz
Horizontal (dBi) peak	-3.78
Vertical (dBi) peak	-1.24

Tx3 (or Rx3) antenna: 5725 MHz (Plot is not required if 3rd Antenna is receive only e.g. Rx3 for 4965AGN)

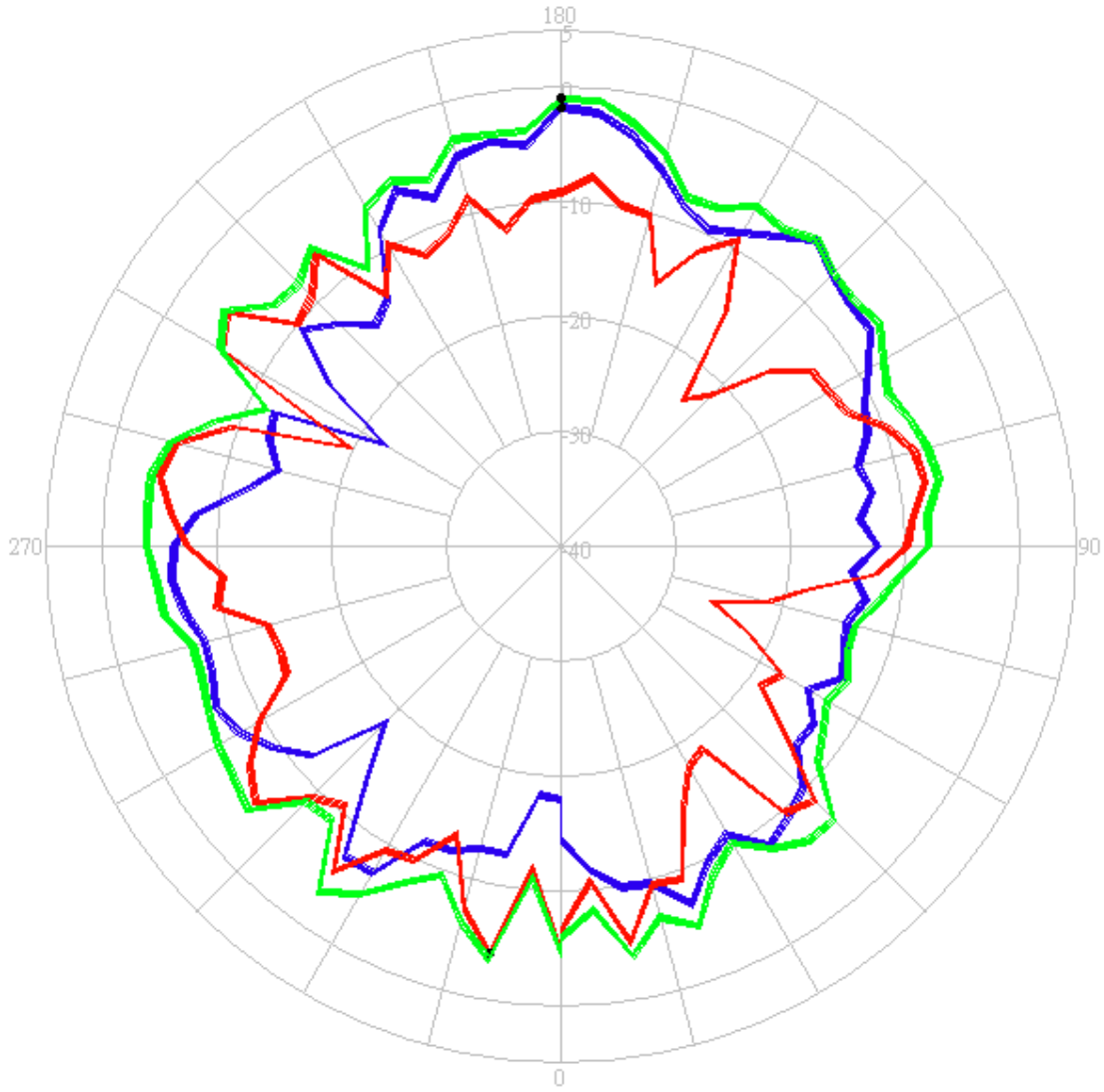


- **Horizontal**
- **Vertical**
- **H+V**

Center Frequency	5725 MHz
Horizontal (dBi) peak	-4.70
Vertical (dBi) peak	-1.31

5725-5850 MHz radiation characteristic

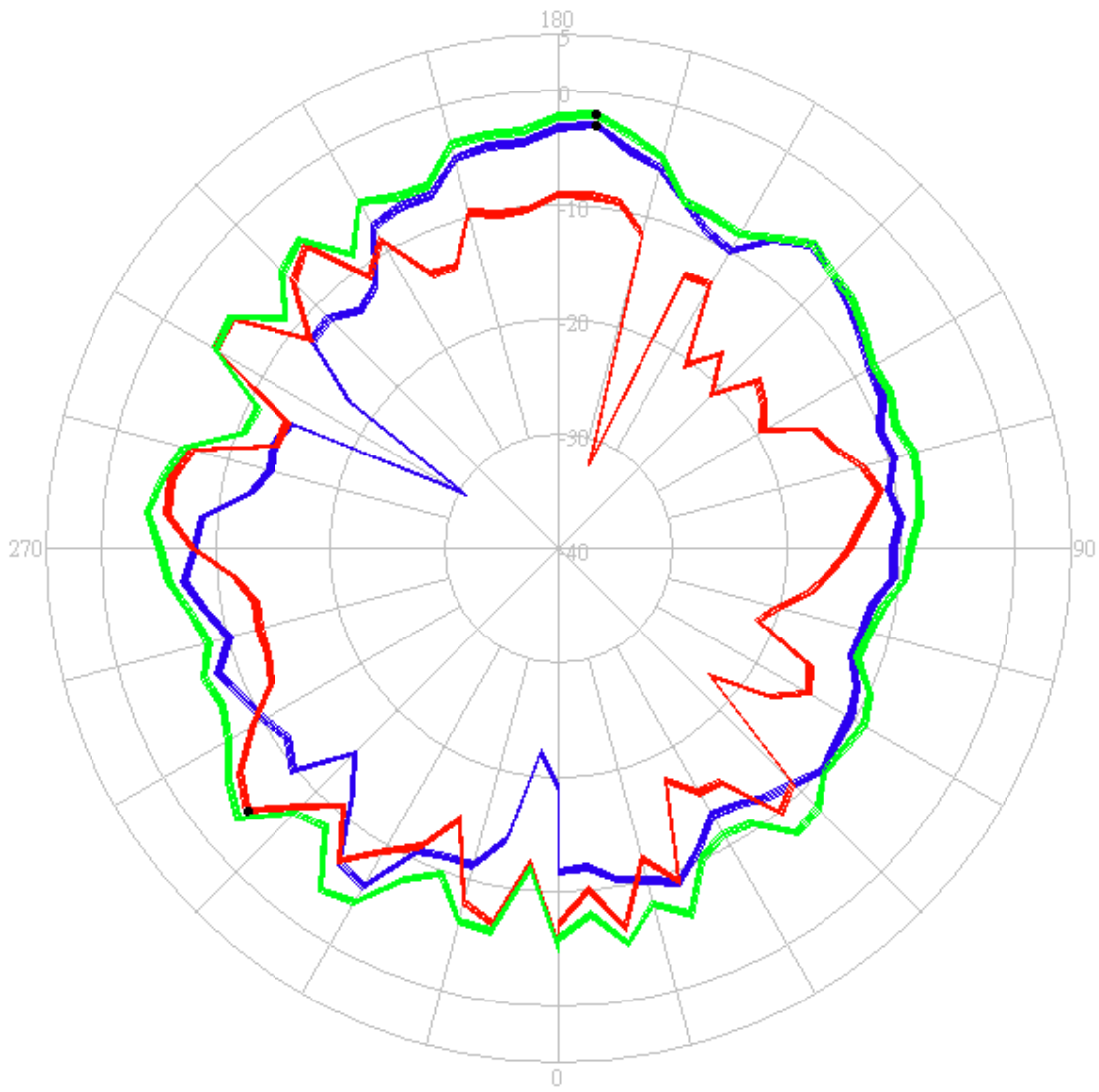
Tx1 antenna: 5725 MHz



- **Horizontal**
- **Vertical**
- **H+V**

Center Frequency	5725 MHz
Horizontal (dBi) peak	-1.71
Vertical (dBi) peak	-4.00

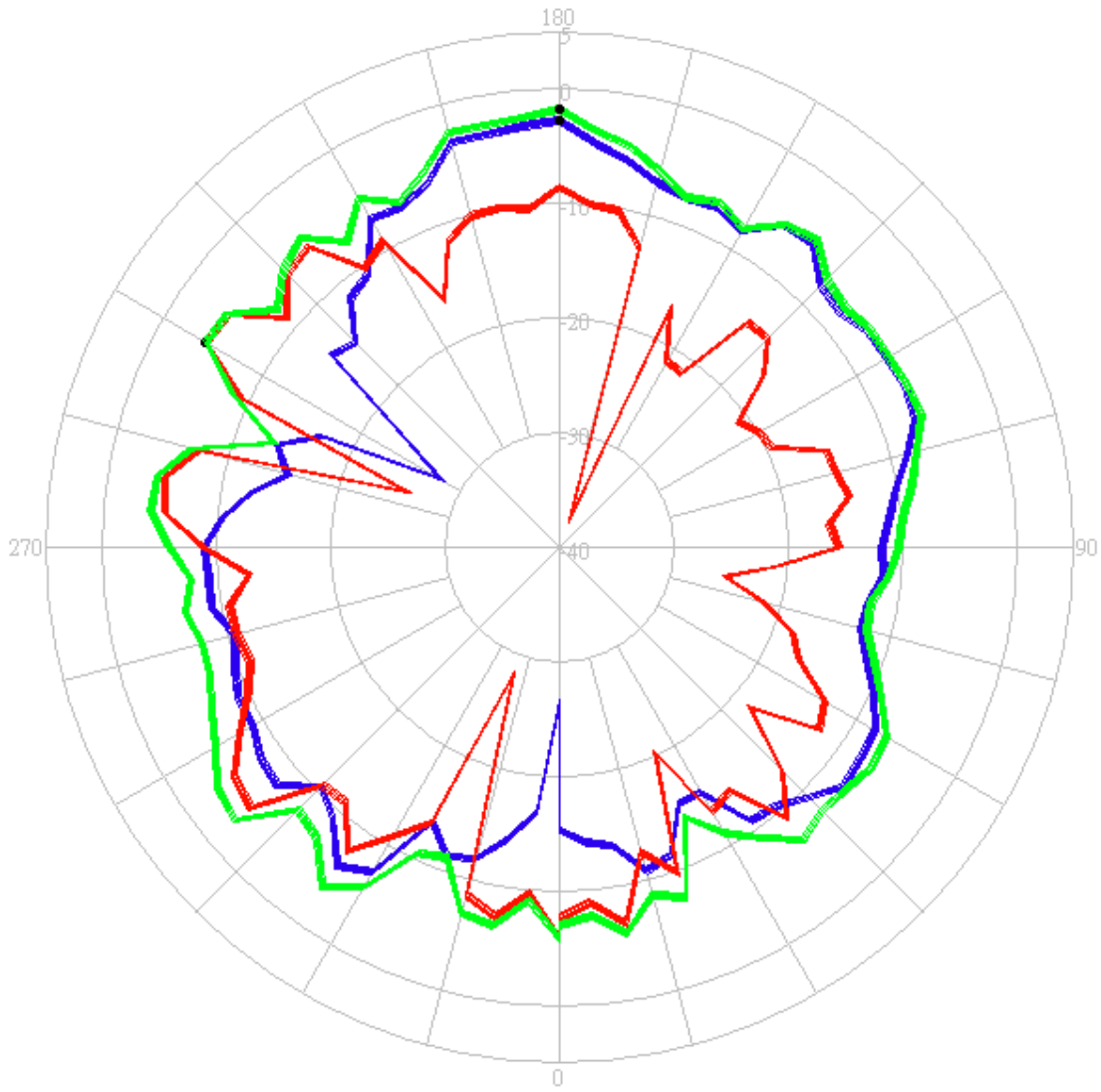
Tx1 antenna: 5785 MHz



- **Horizontal**
- **Vertical**
- **H+V**

Center Frequency	5785 MHz
Horizontal (dBi) peak	-2.84
Vertical (dBi) peak	-4.34

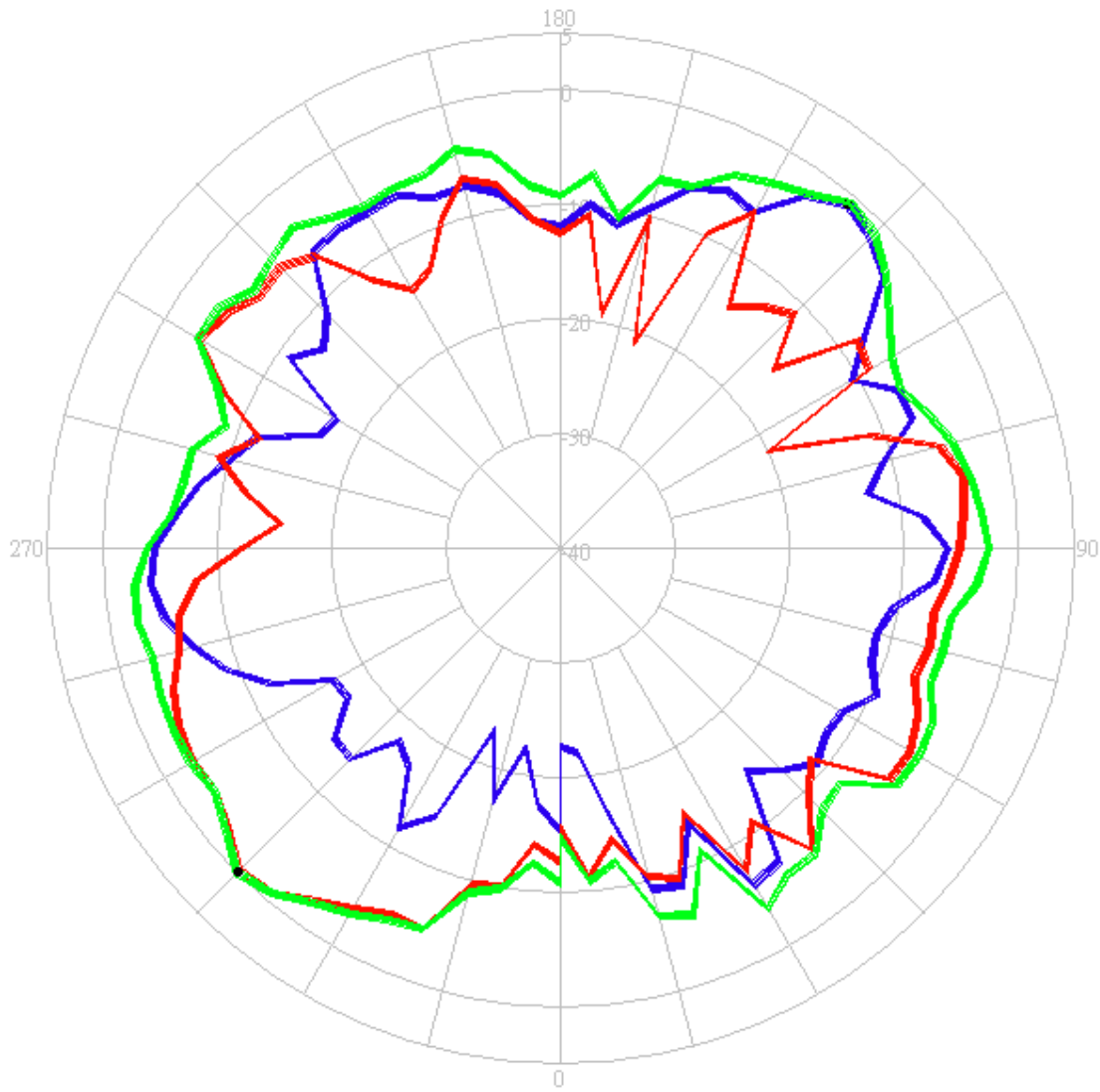
Tx1 antenna: 5850 MHz



- **Horizontal**
- **Vertical**
- **H+V**

Center Frequency	5850 MHz
Horizontal (dBi) peak	-2.72
Vertical (dBi) peak	-4.21

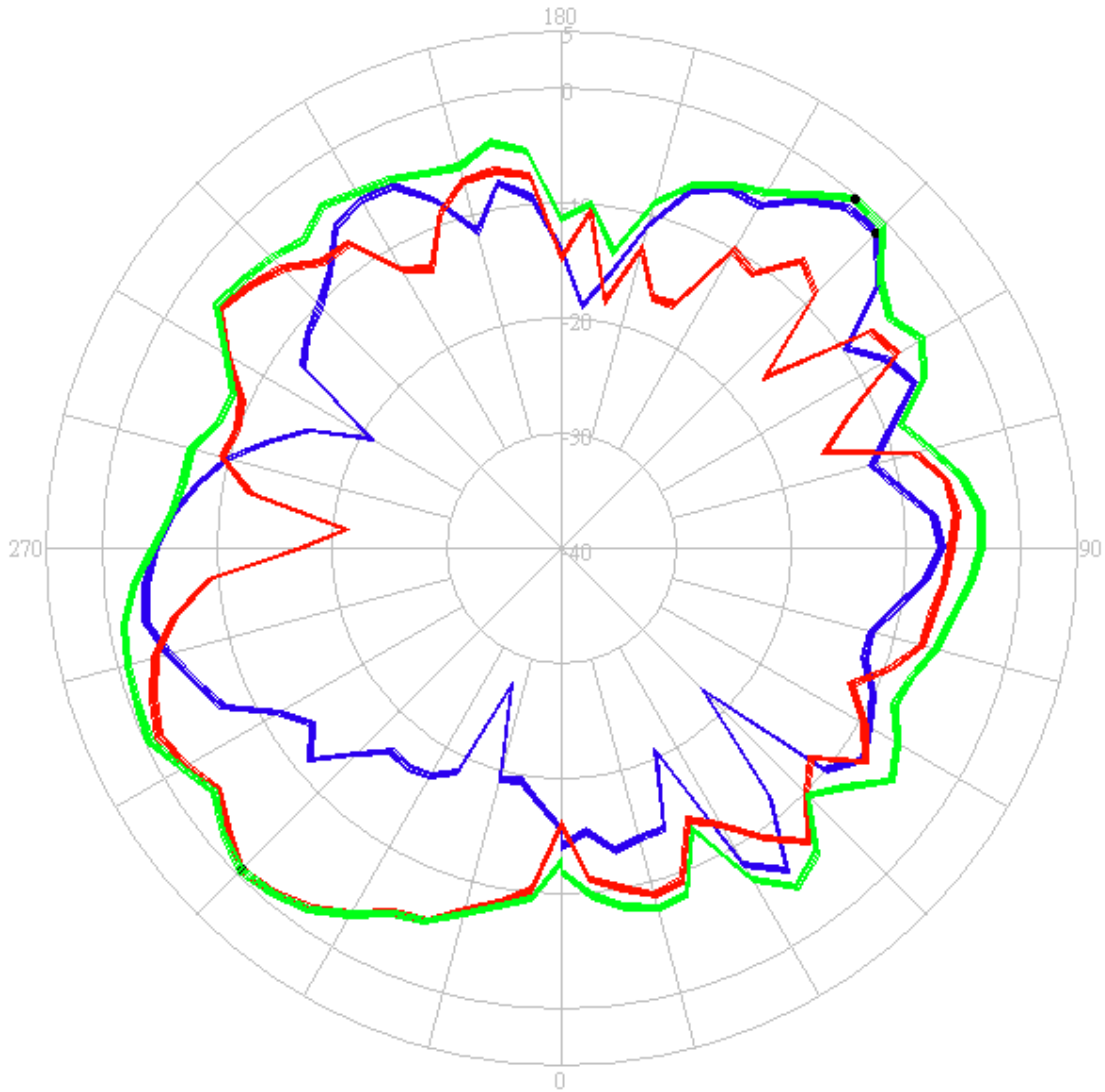
Tx2 (or Rx2) antenna: 5725 MHz (Plot is not required if 2nd Antenna is receive only e.g. Rx2 for 512 family)



- **Horizontal**
- **Vertical**
- **H+V**

Center Frequency	5725 MHz
Horizontal (dBi) peak	-0.82
Vertical (dBi) peak	-0.15

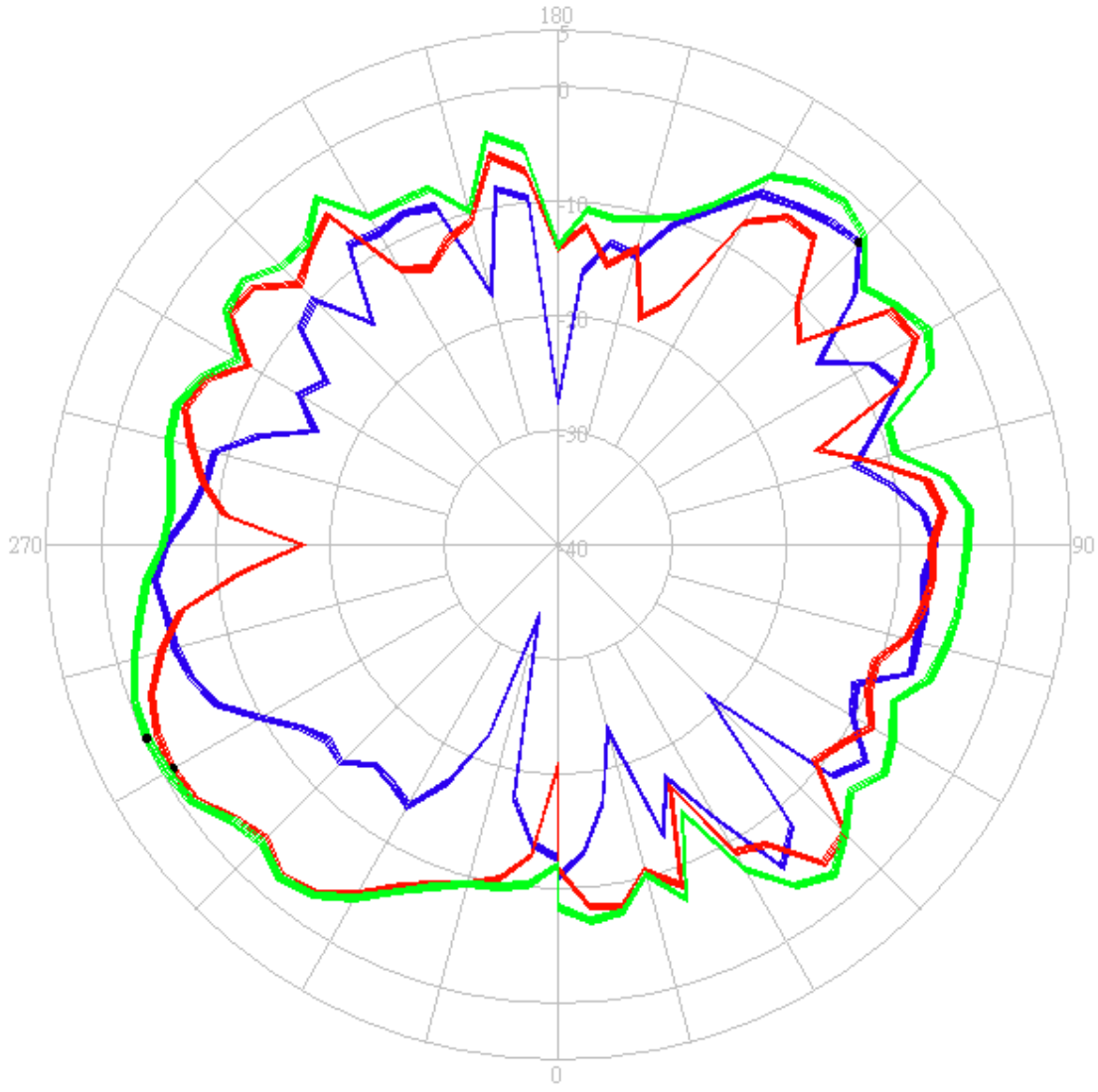
Tx2 (or Rx2) antenna: 5785 MHz (Plot is not required if 2nd Antenna is receive only e.g. Rx2 for 512 family)



- **Horizontal**
- **Vertical**
- **H+V**

Center Frequency	5785 MHz
Horizontal (dBi) peak	-1.11
Vertical (dBi) peak	-0.52

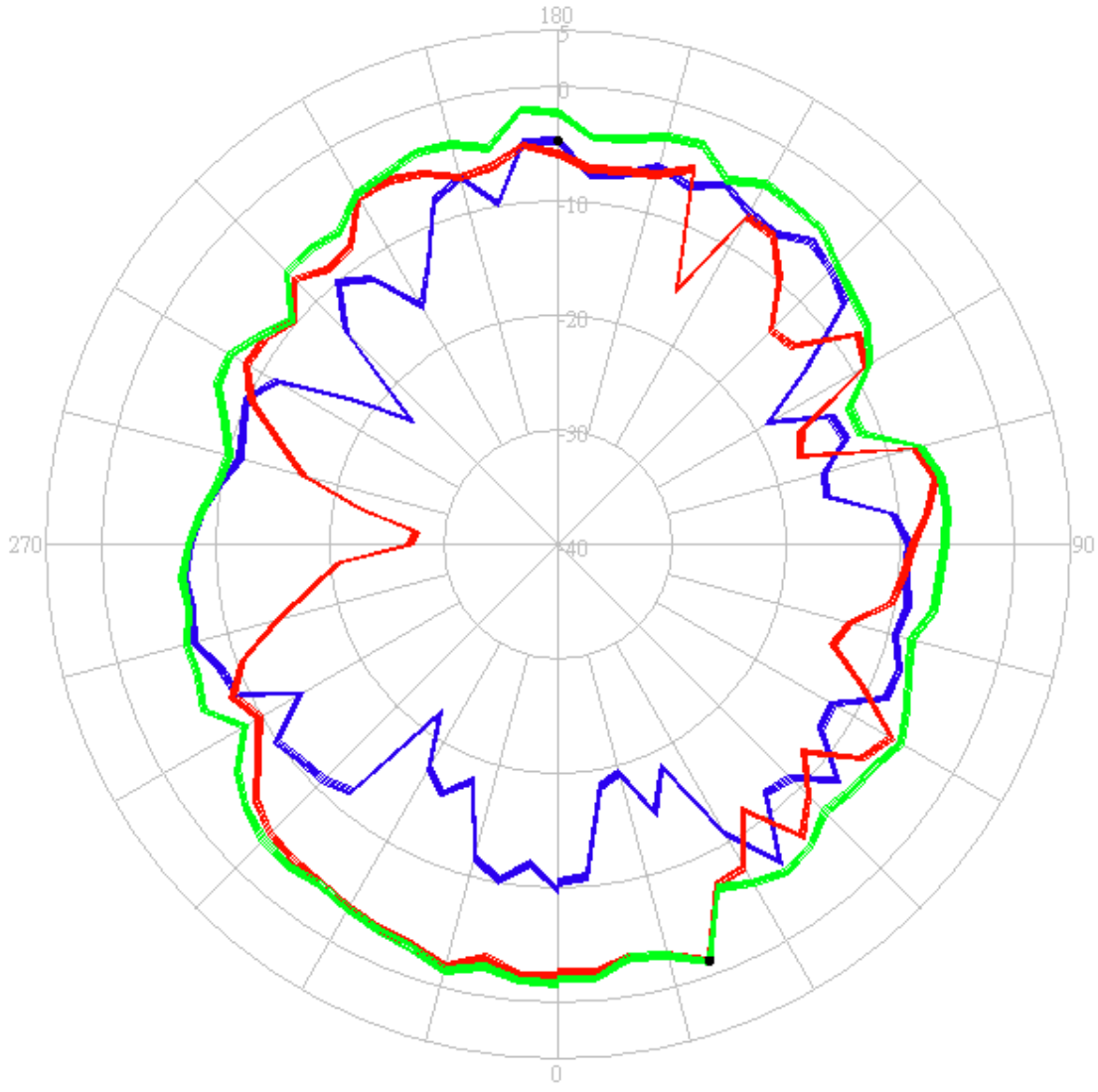
Tx2 (or Rx2) antenna: 5850 MHz (Plot is not required if 2nd Antenna is receive only e.g. Rx2 for 512 family)



- **Horizontal**
- **Vertical**
- **H+V**

Center Frequency	5850 MHz
Horizontal (dBi) peak	-2.60
Vertical (dBi) peak	-0.90

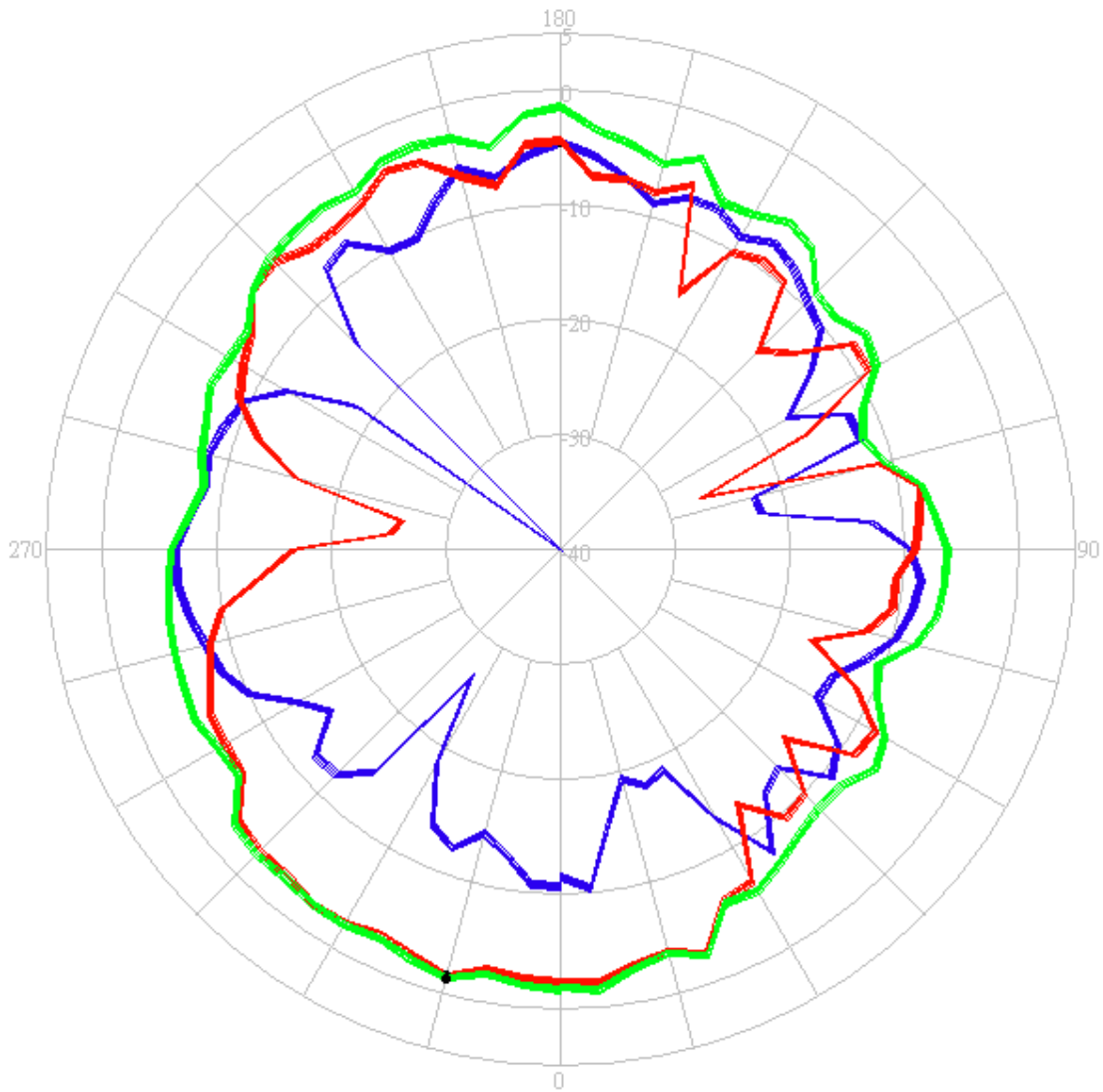
Tx3 (or Rx3) antenna: 5725 MHz (Plot is not required if 3rd Antenna is receive only e.g. Rx3 for 4965AGN)



- **Horizontal**
- **Vertical**
- **H+V**

Center Frequency	5725 MHz
Horizontal (dBi) peak	-4.70
Vertical (dBi) peak	-1.31

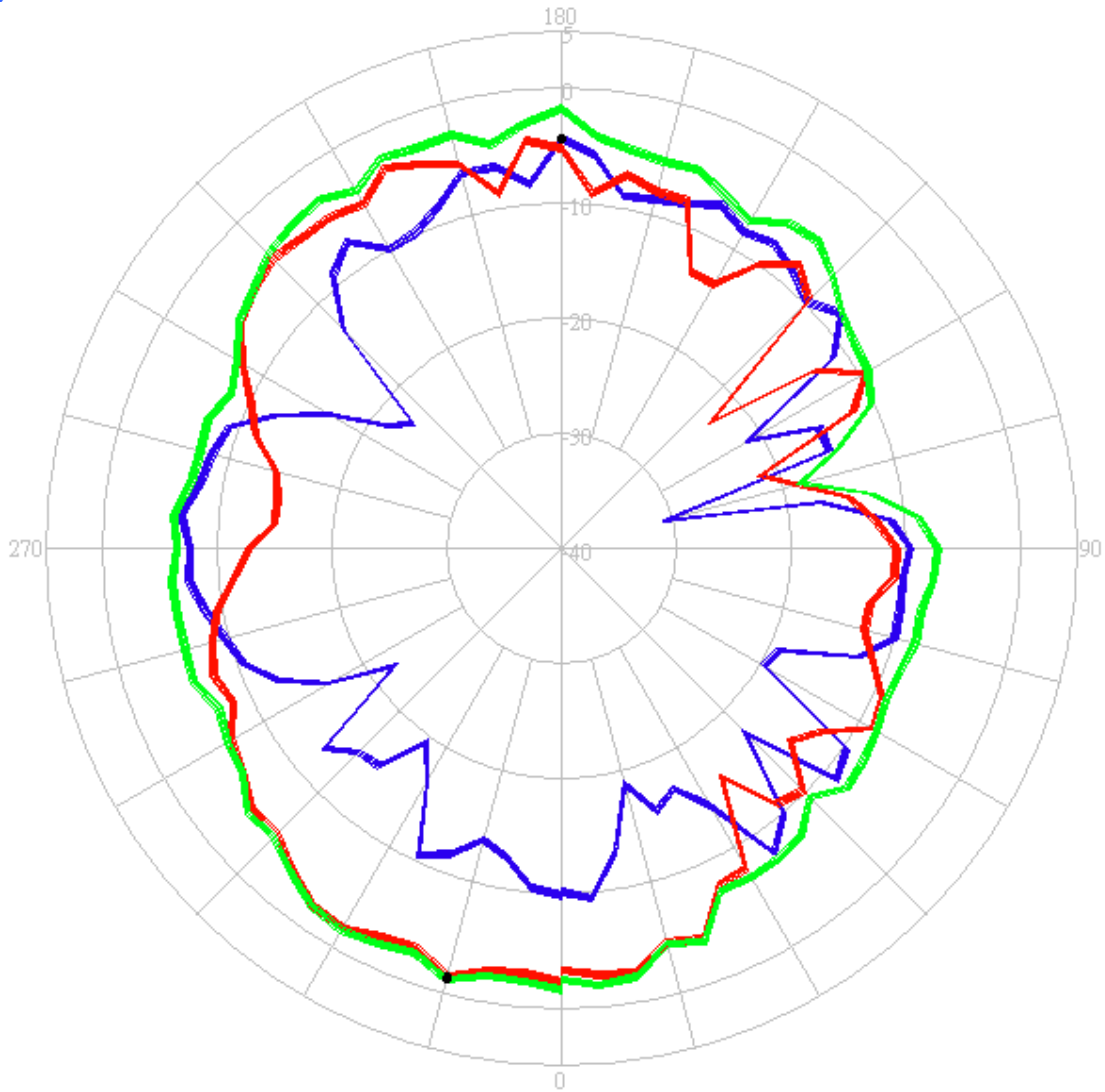
Tx3 (or Rx3) antenna: 5785 MHz (Plot is not required if 3rd Antenna is receive only e.g. Rx3 for 4965AGN



- **Horizontal**
- **Vertical**
- **H+V**

Center Frequency	5785 MHz
Horizontal (dBi) peak	-4.53
Vertical (dBi) peak	-1.52

Tx3 (or Rx3) antenna: 5850 MHz (Plot is not required if 3rd Antenna is receive only e.g. Rx 3 for



- **Horizontal**
- **Vertical**
- **H+V**

Center Frequency	5850 MHz
Horizontal (dBi) peak	-4.38
Vertical (dBi) peak	-1.40

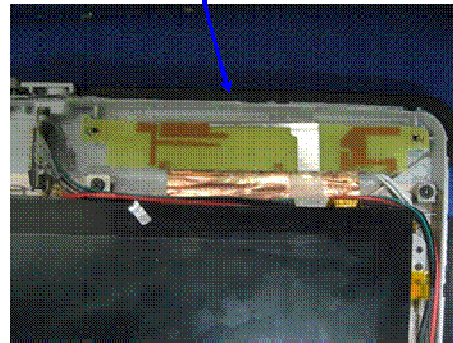
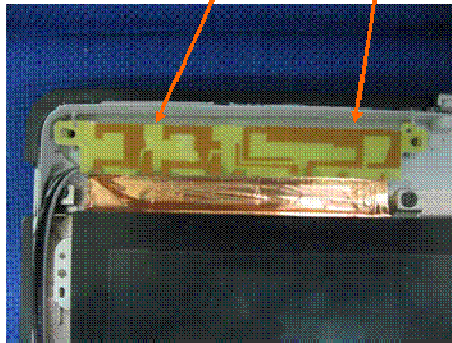
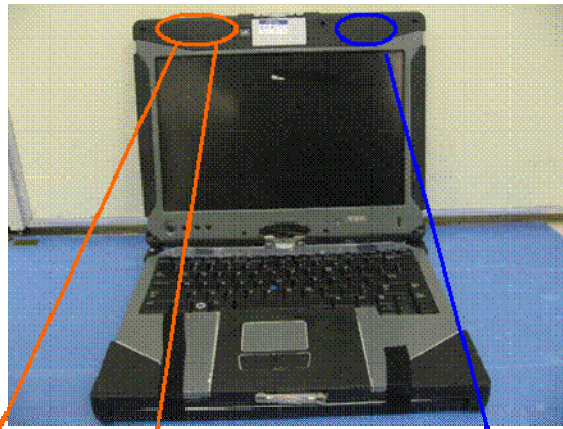
Section 4. Host Platform Information

OEM / ODM Host platform: (EL Camino) platform correlated to antenna data

Rating Label Photo:

Section 5. Antenna Host Platform Location Information

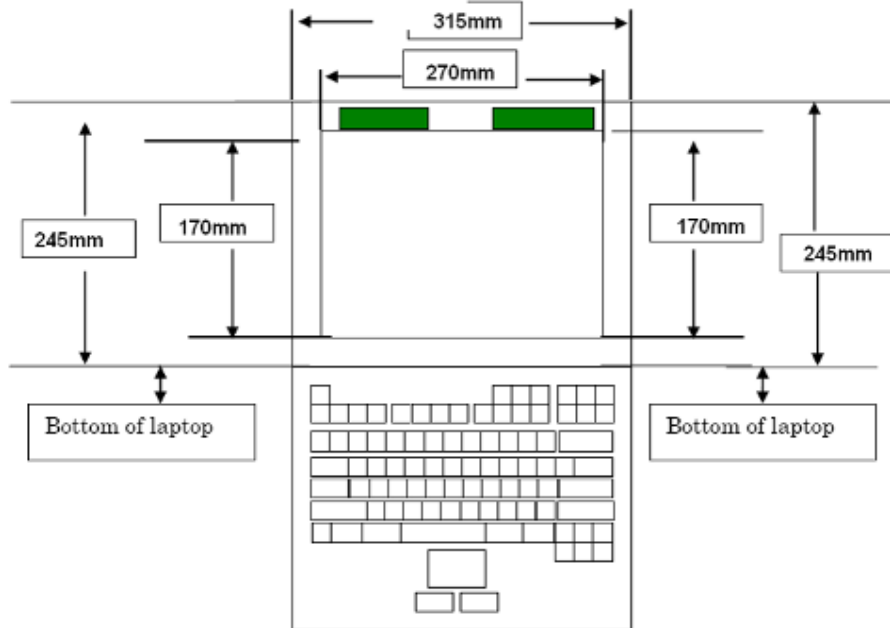
Include a **dimensioned photo or dimensioned drawing** of Tx1, Tx2 and Tx3 antenna placements (measurements are not required for receive-only antenna). Any antenna that transmits must show dimensions to bottom of laptop.



Tx3 Antenna

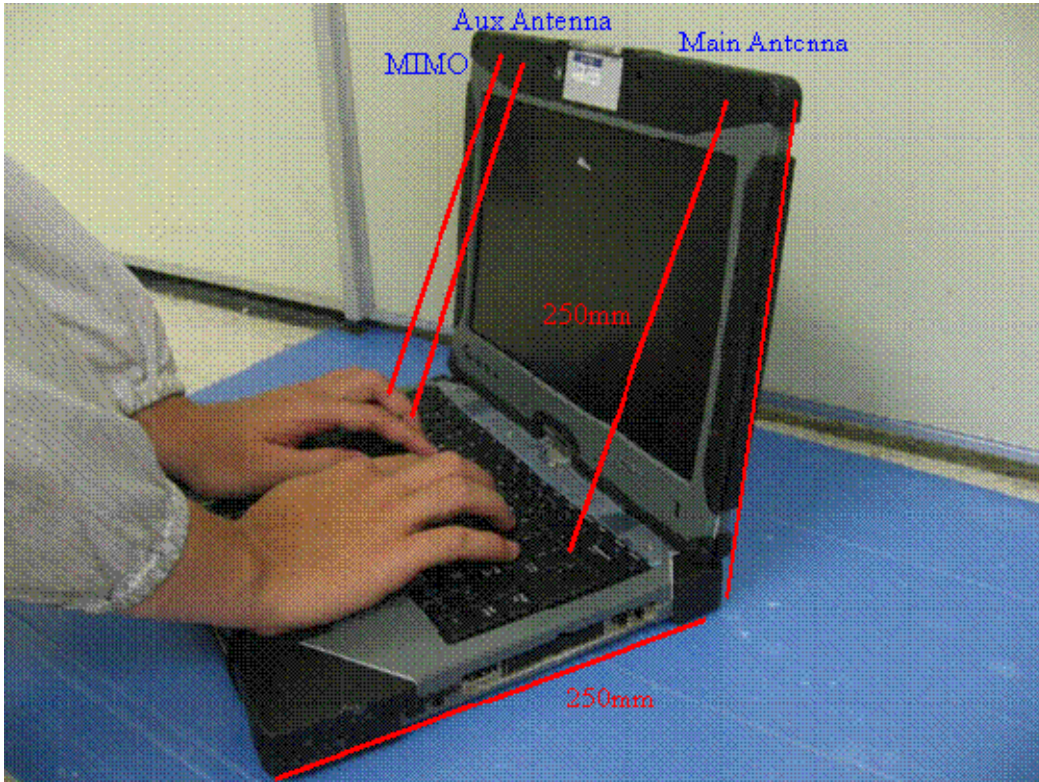
Tx2 Antenna

Tx1 Antenna



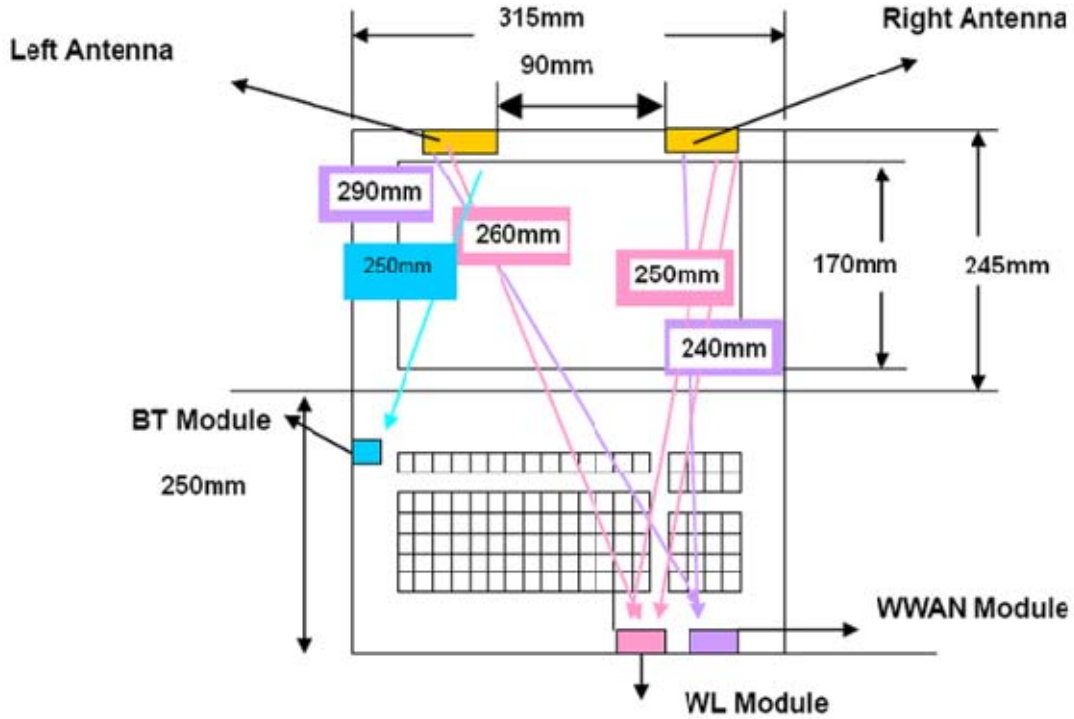
Section 6. Antenna dimensional information for SAR evaluation

Include a **dimensioned photo or dimensioned drawing** showing the distance (mm) between the transmit antennas and the user (excluding hands, wrist, feet, lap/ thigh, and ankle)



Section 7. Diagram Example of Co-Location Antenna Separation

Include a **dimensioned photo or dimensioned drawing** showing the distance (mm) between all WLAN transmit antennas and other co-located radiator transmit antenna such as Bluetooth, WWAN,..



(Note: Due to the evolving rules regarding co-location, each platform will need to be reviewed on a case by case basis)

RX2

Section 8. Local representative contact information

Joseph_hoo@asus.com.tw

Local representative contact information is required for regulatory support for target countries below.

	Local company name	Contact name	Address	Phone number	FAX Number	e-Mail Address	Remark
Korea	ASUS Korea Co. Ltd.	Billy Kim	Room 302, ChungJin Building, 53-5 Wonhyoro3-Ga, YongSan-Gu, Seoul, KOREA	+82-2-702-5168	+82-2-702-5177	billy_kim@asus.com.tw	Registration No.: 106-86-44367
Japan	ASUS Japan	Victor Chen	101-0021 5F Nagai Daiichi bldg., Sotokanda 2-15-8, Chiyoda Ku, Tokyo, Japan89-4, Shinkou Mihama-Ku Chiba-Shi, Chiba-Ku, Japan 280-0002	+81-3-5294-9122	+81-3-5295-0702	victor_chen@asus.com.tw	Mobile phone number: 81-90-1262-1518
Australia	AsusTeK Computer (Australia) PTY LTD.	Emmanuele Silanesu	Unit 6, 112-118 Talavera Rd, North Ryde, NSW 2113, Australia	+61-2-9815-5677	+61-2-9815-6655	Emmanuele_Silanesu@asus.com.tw	ASUS TeK Australia Dealer's License No: 45102396188
New Zealand	ASUS New Zealand Ltd.	Nancy Liang	Level 1, 131 Khyber Pass Road, New Market 1023 Auckland, New Zealand.	+64 9 3689545	+64 9 3681160	liang2_liang@asus.com.tw Nancy_Liang@asus.com.tw	PC #0900278788
UAE+GCC	ASUS Computer MEA	Sameh Kayyali	Al Garhoud area- Zalfa Building- Garhoud road, same building of COMPUME. 1st floor, office#103	+97 1-4-2833728	+97 1-4-2833729	sameh_kj@asus.com.tw	Mobile: 0097 1 50 651 42 97
Iran	No	Aram Pakravan	North 8th floor, Sabz Bldg, between A.S.P. and Hemmat highway, South Shiraz St., Tehran-Iran	+98 912 130 7035	No	aram_pk@asus.com.tw	
KSA	ASUS Technology PTE Ltd (Cimbills)	Waseem Shah	Office # 714, 7th Floor, Al Rossais Commercial Center, Olaya, P.O.Box 68185, Riyadh 11527 - Kingdom of Saudi Arabia	+966-1-460-3216	+966-1-460-3219	Waseem_Shah@asus.com.tw	Mobile: +966 500 142 605
TURKEY	AsusTeK Computer TR Ltd (Cimbills)	Baris Ayartepe	Kısıklı, Alemdağ Cad. Masaldan İş Merkezi No:46 C Blok D:1 Uskudar/Istanbul	Office: +90 0906216 521 46 01 GSM: 0090 0533 308 20 33	0090 216 521 52 64	baris_ayartepe@asus.com.tw	
S. Africa	Asustek Computers PTY LTD	William SA	8th Floor, Twin Tower West, Sandton City, Sandton, Republic of South Africa, 2196	+27 11 783 5450	No	william_sa@asus.com.tw	
Philippine	No	Peter Chua	6808 Wagwag St., Clarmen Village, Sucat, Paranaque City, Metro Manila, Philippines	+63 920 967 8788	No	peter_chua@asus.com.tw	
Singapore	Asus Technology Pte Ltd	Joseph Hoo	10, EUNDS ROAD 8, #12-07, SINGAPORE POST CENTRE, SINGAPORE 408600	+65-66228888 +65-62014505	+65-66228833	Joseph_hoo@asus.com.tw	Telecommunications Dealer's License No: D8 101867
Malaysia	ASUSTEK COMPUTER MALAYSIA SDN BHD (691503T)	Jacky Lim	G-2, IT@SPS, Ground Floor Wisma SPS, Jalan Imbi, 55100, Kuala Lumpur	+601-260-105-58	603-2145-6379	Jacky_lim@asus.com.tw	Field back the office, is helping to in TILAN certification now.
Indonesia	PT ASUS Indonesia	Willy Halim	Rukan Sentra Kelapa Gading, Jl. Mandiri Tengah Blok M / I - 7, Kelapa Gading, Jakarta 14240, Indonesia	+62 21-4586-5050	+62 21-4586-5049	Willy_halim@asus.com.tw	
Thailand	AsusTeK Computer (Thailand) CO., LTD.	Henry Lin Pakorn p	THE MILLENNIA BUILDING, ROOM 1503, 15 TH FLOOR, 62 LUANGSUAN ROAD, KWAENG LUMPINI, KHET PATHUMWAN, BANGKOK 10330, THAILAND.	+66 1 849 0475 +666 1896 3013	+662 651 8915	henry_lin@asus.com.tw	
India	ASUS Techonology Pvt Ltd	Ruth_Lu	4C, Gundecha Onclave, Kherani Rd, Sakinaka,	+91-22-47668800	+91-22-47668856	ruth_lu@asus.com.tw	
Sri Lanka		Francis Kao	Andheri East, Mumbai 400072,			francis_kao@asus.com.tw	
Pakistan			India				
Bangladesh							
HK	Asus Technology HK Ltd.	Eric5 Chen	5/F, Ming Tak Commercial Building, 101 Wan Chai Rd., Wan Chai, Hong Kong	852-3882438	852-3882439	eric5_chen@asus.com.tw	
Argentina	ACI-SA	Jeff_r_wang Linda Wu	ASUS Computer International (ACI) 44370 Nobel Drive Fremont, CA 94538	Doc 510-396-8158	510-608-4555	linda_wu@asus.com.tw	
Brazil	ACI-SA	Jeff_r_wang Don Shieh	ASUS Computer International (ACI) 44370 Nobel Drive Fremont, CA 94538	Doc 510-396-8158	510-608-4555	don_shieh@asus.com	
Mexico	ACI-SA	Felipe Wu Nathalila Lu	ASUS Computer International (ACI) 44370 Nobel Drive Fremont, CA 94538	Doc 510-396-8158	510-608-4555	Felipe_wu@asus.com.tw	
USA	ACI	James Lai	ASUS Computer International (ACI) 44370 Nobel Drive Fremont, CA 94538	Office: +1-510-608-4575 Mobile: +1-510-290-9529	510-608-4555	James_lai@asus.com.tw	
Canada	ACI	Donald Leung	9033 Leslie St. Unit 17/18 Richmond Hill, ON L4B 4K3		905-370-9868	Donald_leung@asus.com	
CE	ASUS COMPUTER GMBH	Eric Chen	Harkortstr. 21-23 40880 Ratingen	49-2102-5600310 (Germany)	49-2102-56 00- 301	eric_chen@asus.com	