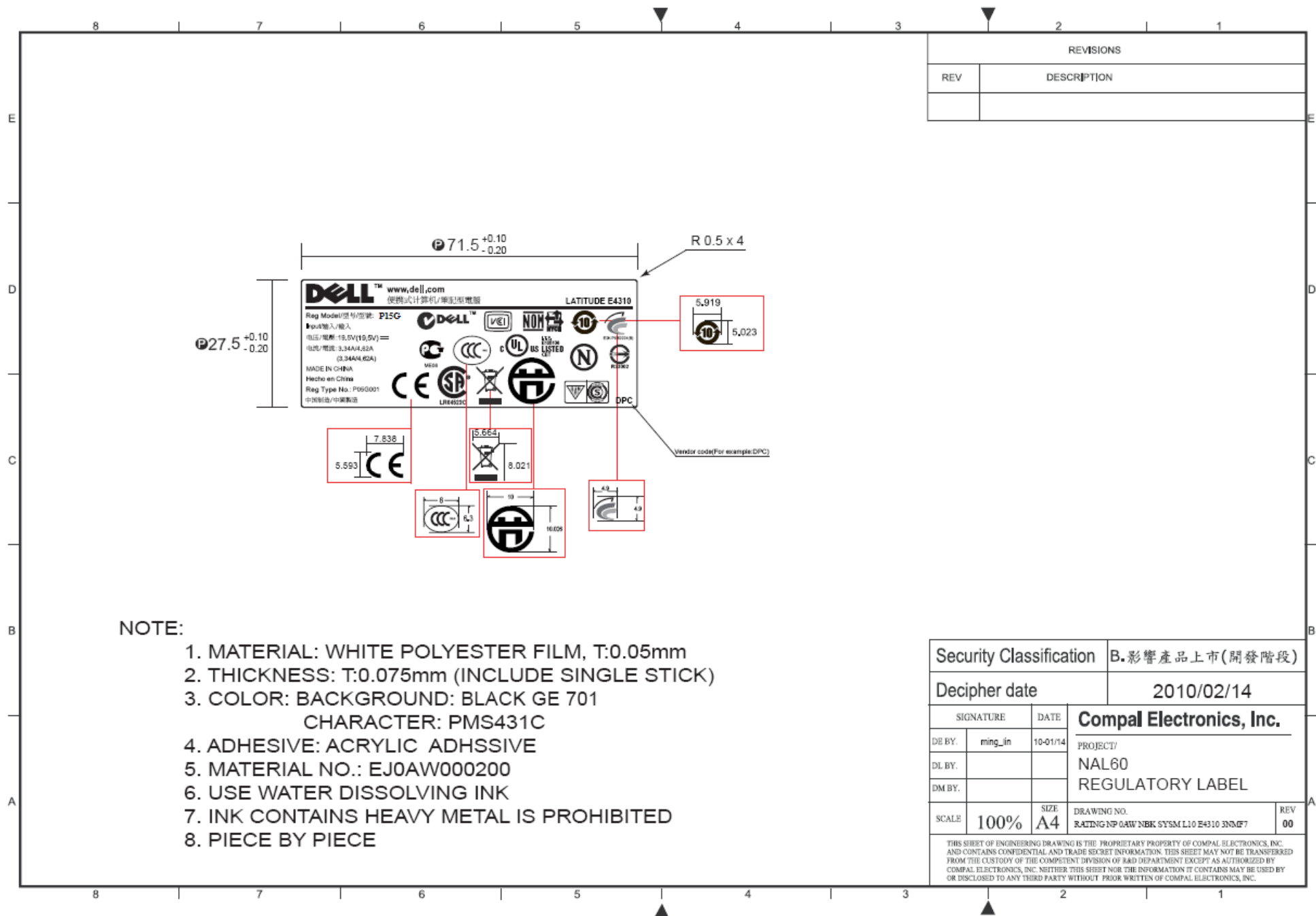


REVISIONS	
REV	DESCRIPTION

- NOTE:
1. MATERIAL: WHITE POLYESTER FILM, T:0.05mm
  2. THICKNESS: T:0.075-0.1mm (INCLUDE SINGLE STICK)
  3. COLOR: BACKGROUND: BLACK GE 701  
CHARACTER: PMS431C
  4. ADHESIVE: ACRYLIC ADHESIVE
  5. MATERIAL NO.: XXXXXXXXXXXXX
  6. USE WATER DISSOLVING INK
  7. INK CONTAINS HEAVY METAL IS PROHIBITED
  8. PIECE BY PIECE

Security Classification		B.影響產品上市(開發階段)		
Decipher date		2010/11/08		
SIGNATURE		DATE	<div>Compal Electronics, Inc.</div> <div>PROJECT/ NCL00 RFID LABEL</div>	
DE BY.	Lynn_Li	10/08-10"		
DL BY.				
DM BY.				
SCALE	100%	SIZE A4	DRAWING NO.	REV 00
THIS SHEET OF ENGINEERING DRAWING IS THE PROPRIETARY PROPERTY OF COMPAL ELECTRONICS, INC. AND CONTAINS CONFIDENTIAL AND TRADE SECRET INFORMATION. THIS SHEET MAY NOT BE TRANSFERRED FROM THE CUSTODY OF THE COMPETENT DIVISION OF R&D DEPARTMENT EXCEPT AS AUTHORIZED BY COMPAL ELECTRONICS, INC. NEITHER THIS SHEET NOR THE INFORMATION IT CONTAINS MAY BE USED BY OR DISCLOSED TO ANY THIRD PARTY WITHOUT PRIOR WRITTEN OF COMPAL ELECTRONICS, INC.				

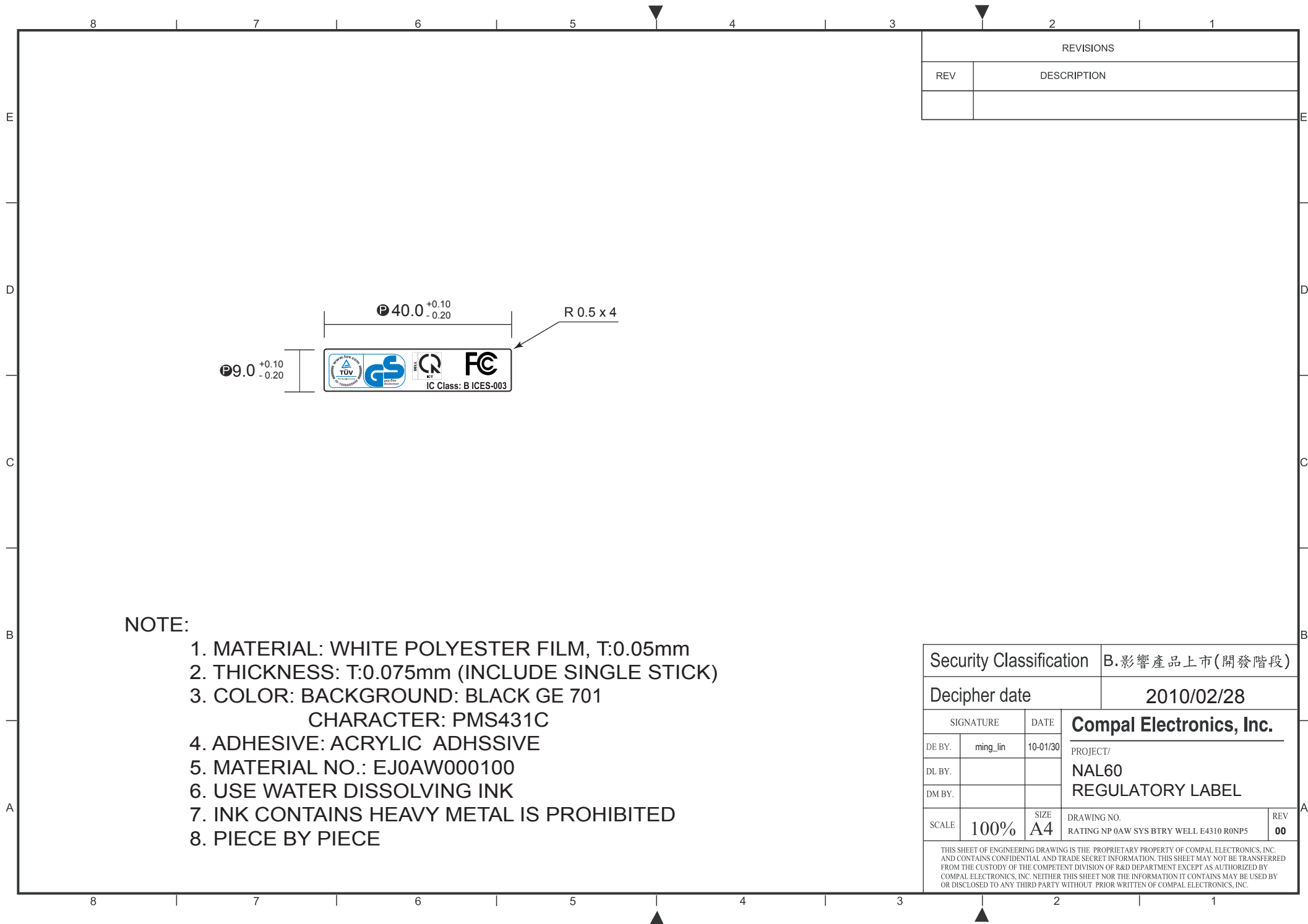


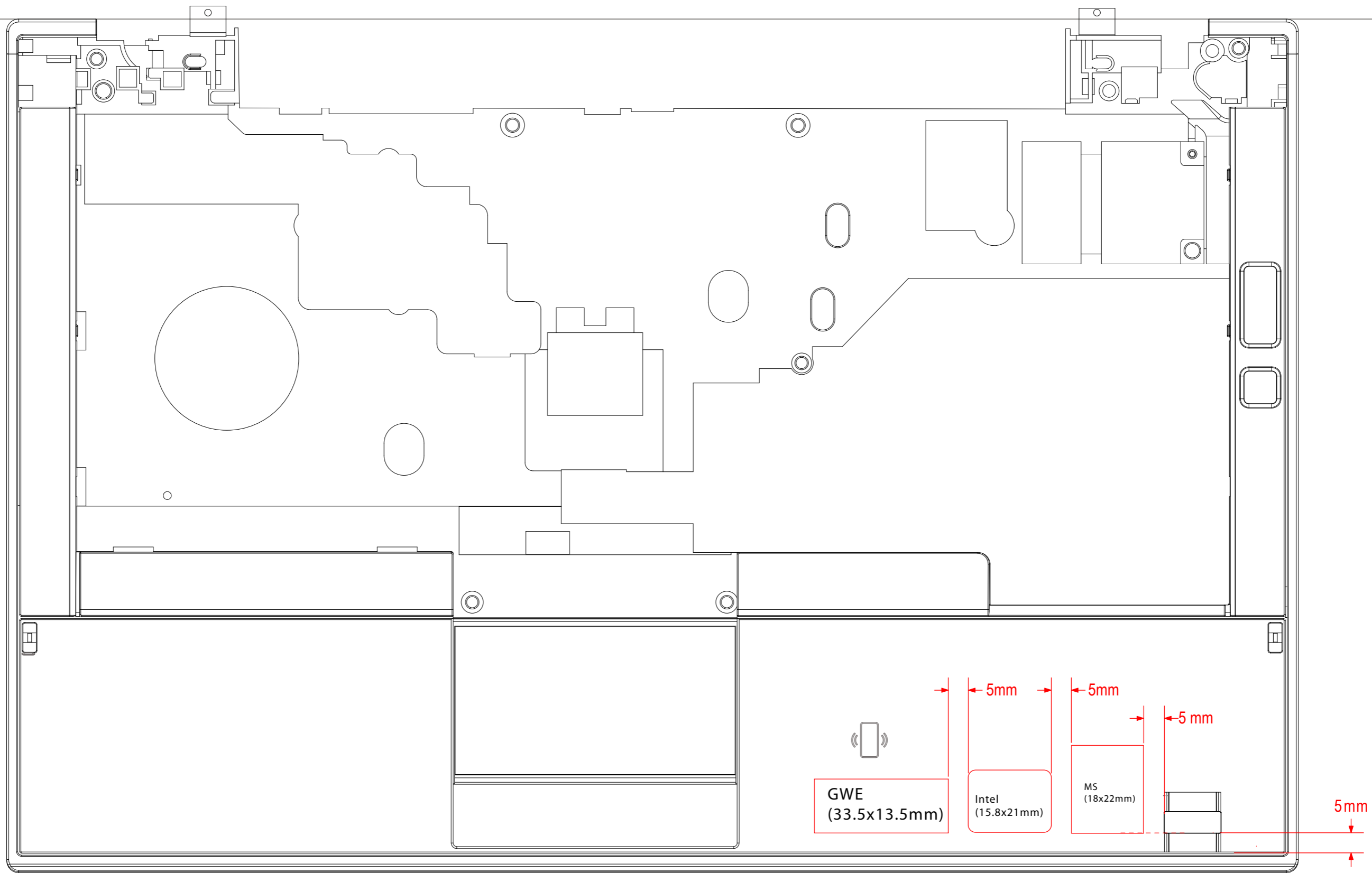
NOTE:

1. MATERIAL: WHITE POLYESTER FILM, T:0.05mm
2. THICKNESS: T:0.075mm (INCLUDE SINGLE STICK)
3. COLOR: BACKGROUND: BLACK GE 701  
CHARACTER: PMS431C
4. ADHESIVE: ACRYLIC ADHSSIVE
5. MATERIAL NO.: EJ0AW000200
6. USE WATER DISSOLVING INK
7. INK CONTAINS HEAVY METAL IS PROHIBITED
8. PIECE BY PIECE

REVISIONS	
REV	DESCRIPTION

Security Classification		B.影響產品上市(開發階段)	
Decipher date		2010/02/14	
SIGNATURE		DATE	<b>Compal Electronics, Inc.</b> PROJECT/ NAL60 REGULATORY LABEL
DE BY.	ming_in	10-01/14	
DL BY.			
DM BY.			
SCALE	100%	SIZE A4	DRAWING NO. RATING NP 0AW NBK SYSML10 E4310 3NDMF7
THIS SHEET OF ENGINEERING DRAWING IS THE PROPRIETARY PROPERTY OF COMPAL ELECTRONICS, INC. AND CONTAINS CONFIDENTIAL AND TRADE SECRET INFORMATION. THIS SHEET MAY NOT BE TRANSFERRED FROM THE CUSTODY OF THE COMPETENT DIVISION OF R&D DEPARTMENT EXCEPT AS AUTHORIZED BY COMPAL ELECTRONICS, INC. NEITHER THIS SHEET NOR THE INFORMATION IT CONTAINS MAY BE USED BY OR DISCLOSED TO ANY THIRD PARTY WITHOUT PRIOR WRITTEN OF COMPAL ELECTRONICS, INC.			
REV		00	

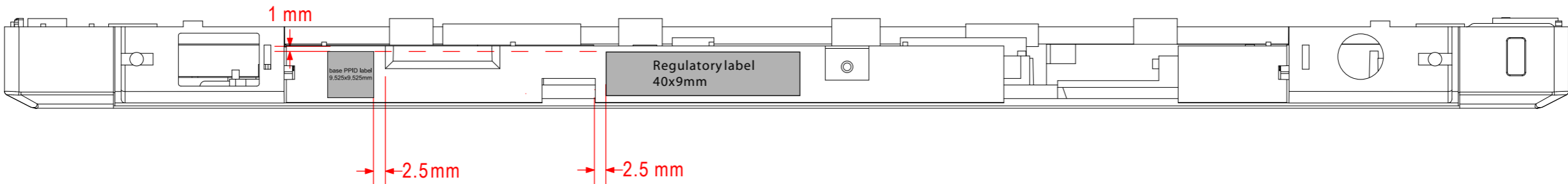




# Lafite label location proposal

(Stick labels on palm rest)

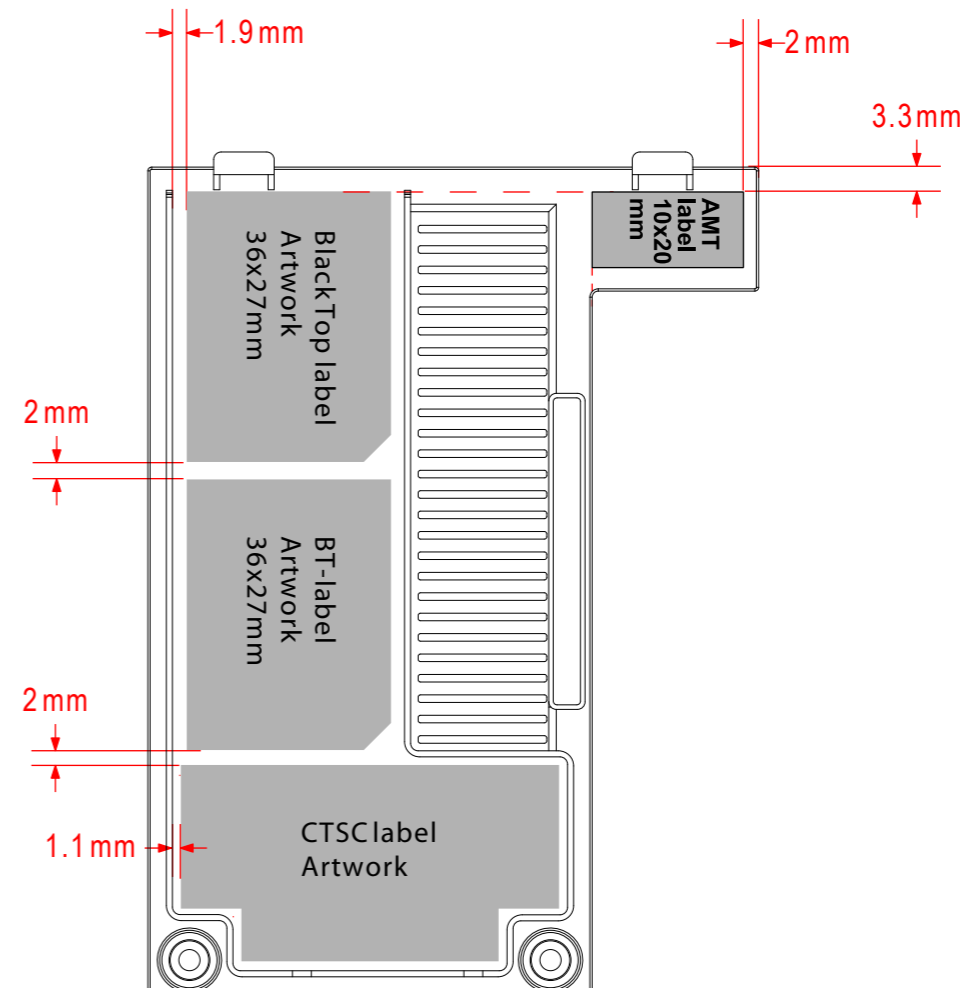
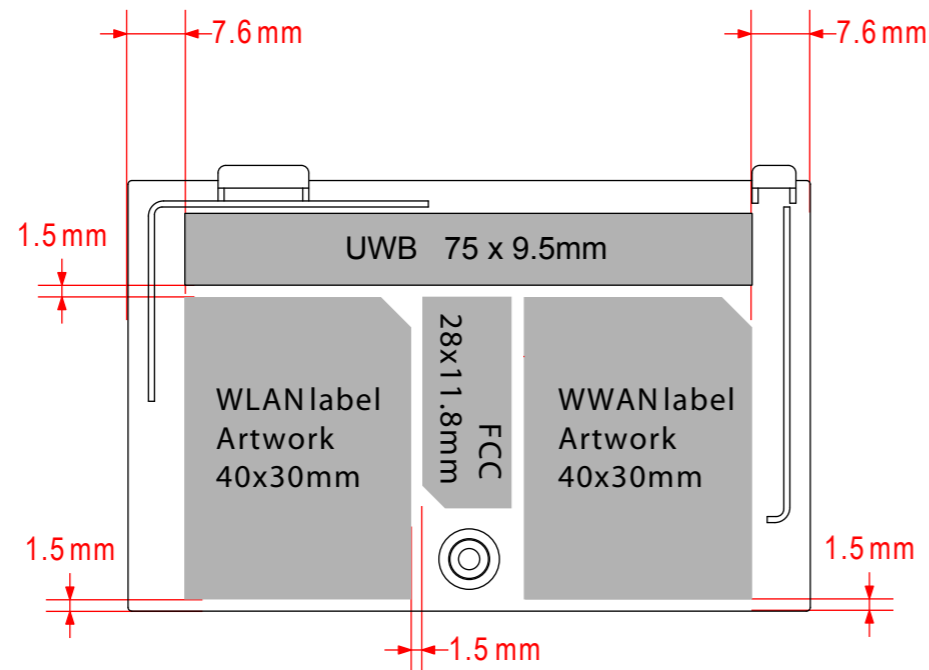
Expiration Data	2010/08/21			Security Classification			B.RD Phase		
Engineer				Sheet	1 of 1	Date	2009.08.21	Rev.	02
Designer	Rex_Cheng			Title Lafite_label_location					
Approved									
Scale	1:1	Unit.	mm	Drawing No.		NAL60_LABEL_03			
<div>COMPAL INDUSTRIAL DESIGN CENTER</div>				THIS SHEET OF ENGINEERING DRAWING IS THE PROPRIETARY PROPERTY OF COMPAL ELECTRONICS, INC. AND CONTAINS CONFIDENTIAL AND TRADE SECRET INFORMATION. THIS SHEET MAY NOT BE TRANSFERRED FROM THE CUSTODY OF THE COMPETENT DIVISION OF R&D DEPARTMENT EXCEPT AS AUTHORIZED BY COMPAL ELECTRONICS, INC. NEITHER THIS SHEET NOR THE INFORMATION IT CONTAINS MAY BE USED BY OR DISCLOSED TO ANY THIRD PARTY WITHOUT PRIOR WRITTEN CONSENT OF COMPAL ELECTRONICS, INC.					



# Lafite label location proposal


(Stick labels on rear side of case )

Expiration Data	2010/11/20			Security Classification			B RD Phase		
Engineer				Sheet	1 of 1	Date	2009.11.20	Rev.	01
Designer	Rex_Cheng			Title Lafite_label_location					
Approved									
Scale	1:1	Unit.	mm	Drawing No.		NCL60_LABEL_04			



# Lafite label location proposal

(Stick labels on back side of DDR/Wireless door )

Expiration Data	2010/09/17			Security Classification			B RD Phase		
Engineer				Sheet	1 of 1	Date	2009.09.17	Rev.	03
Designer	Rex_Cheng			<div>T itle</div> <div>Lafite_label_location</div>					
Approved									
Scale	1:1	Unit.	mm	Draw ing No.		NAL60_LABEL_02			
				THIS SHEET OF ENGINEERING DRAWING IS THE PROPRIETARY PROPERTY OF COMPAL ELECTRONICS, INC. AND CONTAINS CONFIDENTIAL AND TRADE SECRET INFORMATION. THIS SHEET MAY NOT BE TRANSFERRED FROM THE CUSTODY OF THE COMPETENT DIVISION OF R&D DEPARTMENT EXCEPT AS AUTHORIZED BY COMPAL ELECTRONICS, INC. NEITHER THIS SHEET NOR THE INFORMATION IT CONTAINS MAY BE USED BY OR DISCLOSED TO ANY THIRD PARTY WITHOUT PRIOR WRITTEN CONSENT OF COMPAL ELECTRONICS, INC.					
INDUSTRIAL DESIGN CENTER									

