

Venue 10 Keyboard

7000 Series

Quick Start Guide

Translated Text Here

Translated Text Here

Translated Text Here



1 Connect the keyboard

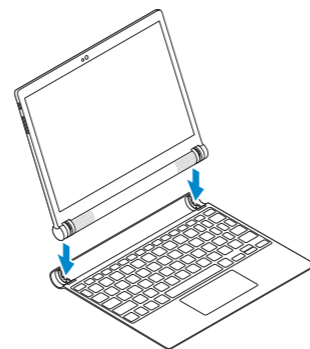
Connect the keyboard | Connect the keyboard
Connect the keyboard

- Turn on the tablet and ensure Bluetooth is enabled.
- Align the keyboard slots with the tablet connectors, and insert the tablet into the keyboard.
- The keyboard backlight and the Caps Lock status light turn on.

- Turn on the tablet and ensure Bluetooth is enabled.
- Align the keyboard slots with the tablet connectors, and insert the tablet into the keyboard.
- The keyboard backlight and the Caps Lock status light turn on.

- Turn on the tablet and ensure Bluetooth is enabled.
- Align the keyboard slots with the tablet connectors, and insert the tablet into the keyboard.
- The keyboard backlight and the Caps Lock status light turn on.

- Turn on the tablet and ensure Bluetooth is enabled.
- Align the keyboard slots with the tablet connectors, and insert the tablet into the keyboard.
- The keyboard backlight and the Caps Lock status light turn on.



2 Pair the keyboard

Pair the keyboard | Pair the keyboard
Pair the keyboard

- Wait for the keyboard to be detected by your tablet.
- Tap **Scan** if a message appears stating that the keyboard is not connected.
- Enter the password displayed on the screen when prompted.

- Wait for the keyboard to be detected by your tablet.
- Tap **Scan** if a message appears stating that the keyboard is not connected.
- Enter the password displayed on the screen when prompted.

- Wait for the keyboard to be detected by your tablet.
- Tap **Scan** if a message appears stating that the keyboard is not connected.
- Enter the password displayed on the screen when prompted.

- Wait for the keyboard to be detected by your tablet.
- Tap **Scan** if a message appears stating that the keyboard is not connected.
- Enter the password displayed on the screen when prompted.

Product support and manuals
Product support and manuals
Product support and manuals
Product support and manuals

Contact Dell
Contact Dell
Contact Dell
Contact Dell

Regulatory and safety
Regulatory and safety
Regulatory and safety
Regulatory and safety

Regulatory model
Regulatory model
Regulatory model
Regulatory model

dell.com/support
dell.com/support/manuals

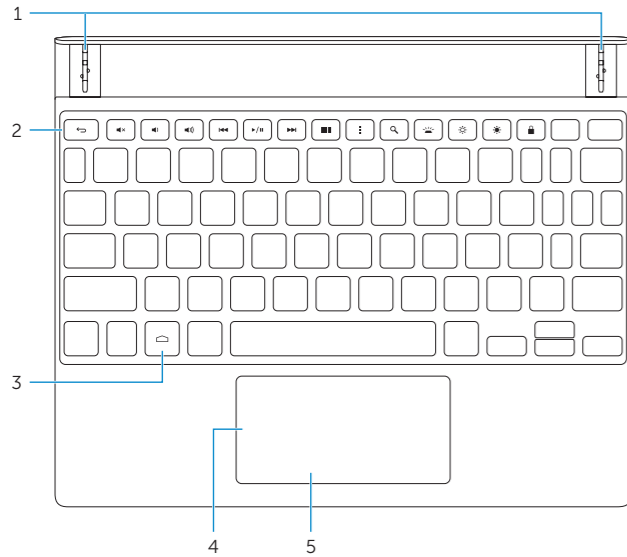
dell.com/contactdell

dell.com/regulatory_compliance

KW14M02

Features

Features | Features | Features



1. Tablet connectors (2)
2. Shortcut keys
3. Home key
4. Touchpad
5. Click area

1. Tablet connectors (2)
2. Shortcut keys
3. Home key
4. Touchpad
5. Click area

Shortcut keys

Shortcut keys | Shortcut keys | Shortcut keys



Back
Back | Back | Back



Mute audio
Mute audio | Mute audio
Mute audio



Decrease volume
Decrease volume | Decrease volume
Decrease volume



Increase volume
Increase volume | Increase volume
Increase volume



Play previous track/chapter
Play previous track/chapter
Play previous track/chapter
Play previous track/chapter



Play/Pause
Play/Pause | Play/Pause
Play/Pause



Play next track/chapter
Play next track/chapter
Play next track/chapter
Play next track/chapter



All apps
All apps | All apps
All apps



Action menu
Action menu | Action menu
Action menu



Search
Search | Search | Search



Toggle keyboard backlight
Toggle keyboard backlight
Toggle keyboard backlight
Toggle keyboard backlight



Decrease brightness
Decrease brightness | Decrease brightness
Decrease brightness



Increase brightness
Increase brightness | Increase brightness
Increase brightness



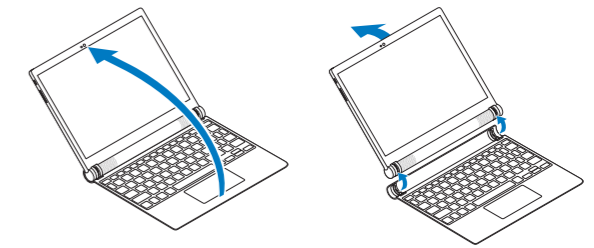
Screen lock
Screen lock | Screen lock
Screen lock



Home
Home | Home | Home

Disconnecting the keyboard

Disconnecting the keyboard | Disconnecting the keyboard
Disconnecting the keyboard




Turn the tablet outward to disconnect the keyboard.

Turn the tablet outward to disconnect the keyboard.

Turn the tablet outward to disconnect the keyboard.

Turn the tablet outward to disconnect the keyboard.

FCC Radiation Exposure Statement

 **WARNING:** The radiated output power of this device is below the FCC radio frequency exposure limits. Nevertheless, this device should be used in such a manner that the potential for human contact during normal operation is minimized. This device has been evaluated for and shown compliant with the FCC RF Exposure limits under **mobile** exposure conditions (antennas are greater than 20cm from a person's body). This device has also been evaluated for and shown compliant with the FCC RF exposure limits under **portable** exposure conditions (antennas are within 20 cm of a person's body) when installed in certain specific configurations. Details of the authorized configurations can be found at <https://fjallfoss.fcc.gov/oetcf/eas/reports/GenericSearch.cfm> by entering the FCC ID number on the device.

Interference Statement

This equipment generates, uses, and can radiate radio frequency energy and, if not installed and used in accordance with the manufacturer's instruction manual, may cause interference with radio and television reception. This equipment has been tested and found to comply with the limits for a Class B digital device pursuant to Part 15 of the FCC Rules.

This device complies with Part 15 of the FCC Rules. Operation is subject to the following two conditions:


- 1) This device may not cause harmful interference.
- 2) This device must accept any interference received, including interference that may cause undesired operation.

Notice: The FCC regulations provide that changes or modifications not expressly approved by Dell Inc. could void your authority to operate this equipment.

These limits are designed to provide reasonable protection against harmful interference in a residential installation. However, there is no guarantee that interference will not occur in a particular installation. If this equipment does cause harmful interference with radio or television reception, which can be determined by turning the equipment off and on, you are encouraged to try to correct the interference by one or more of the following measures:

- Reorient the receiving antenna.
- Relocate the system with respect to the receiver.
- Move the system away from the receiver.
- Plug the system into a different outlet so that the system and the receiver are on different branch circuits.

If necessary, consult a representative of Dell Inc. or an experienced radio/television technician for additional suggestions.

 NOTE: Dell Bluetooth devices must be installed and used in strict accordance with the manufacturer's instructions as described in the user documentation that comes with the product. Any other installation or use will violate FCC Part 15 regulations. Modifications not expressly approved by Dell could void your authority to operate the equipment.