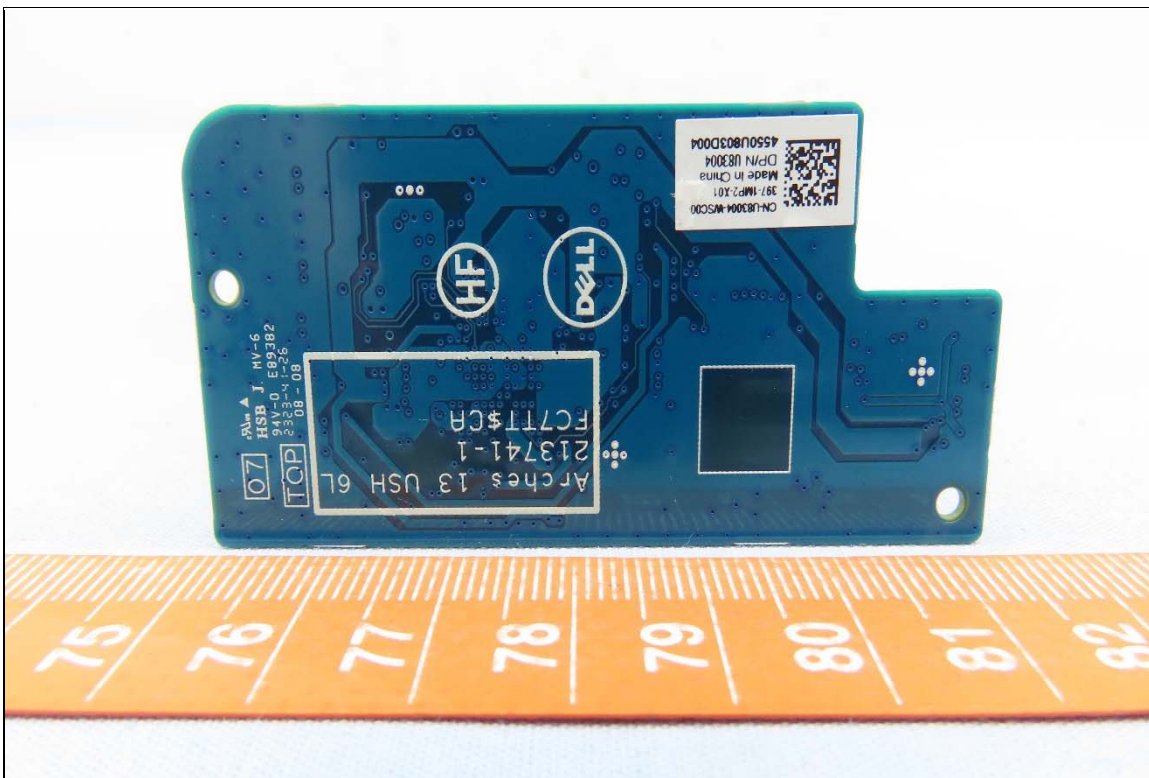
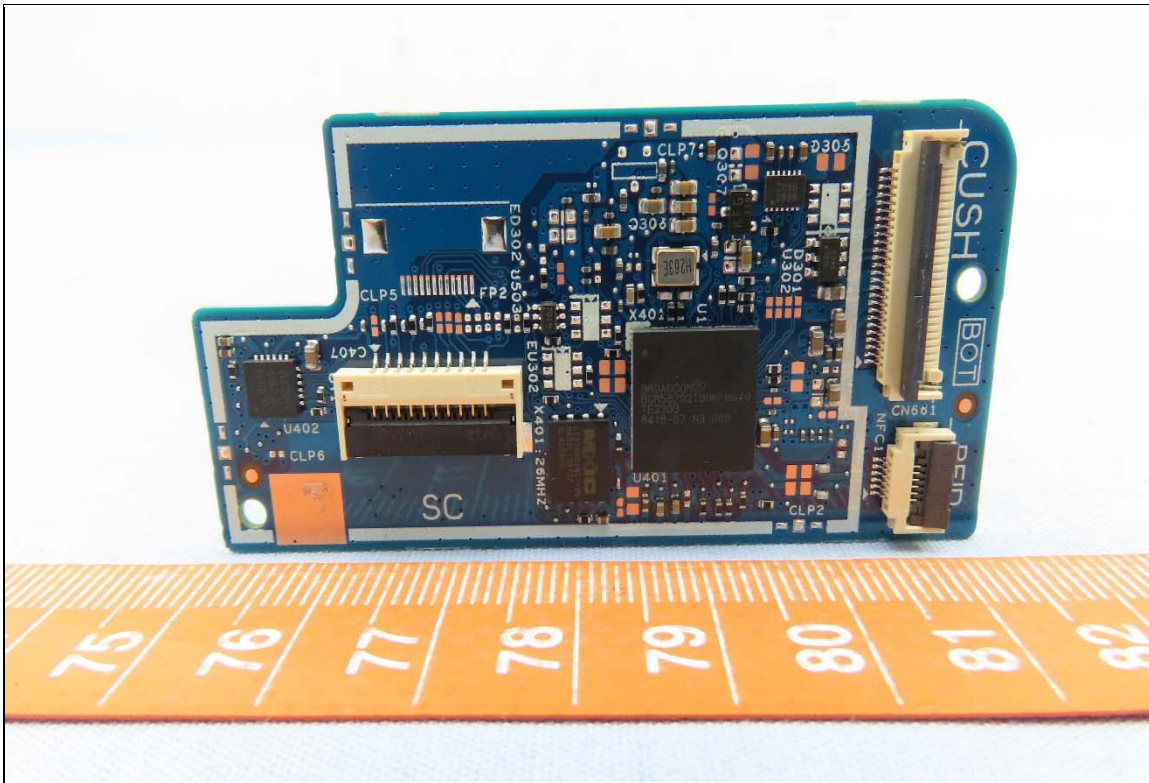
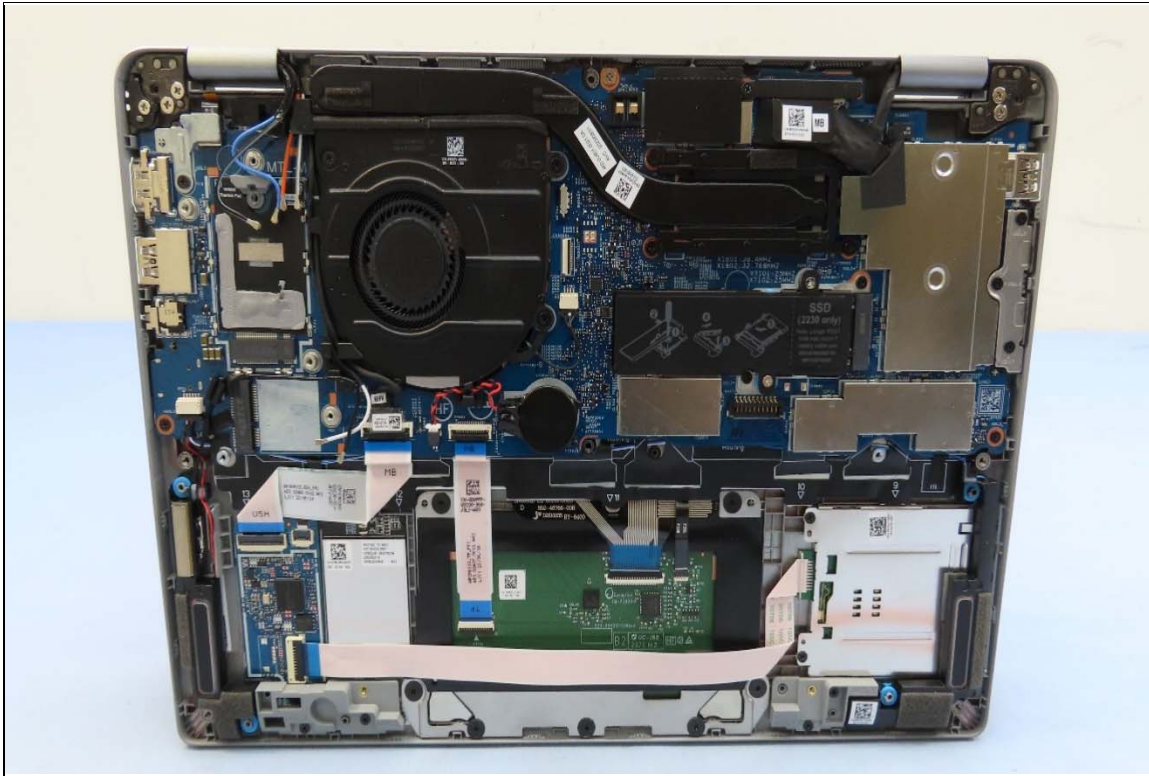


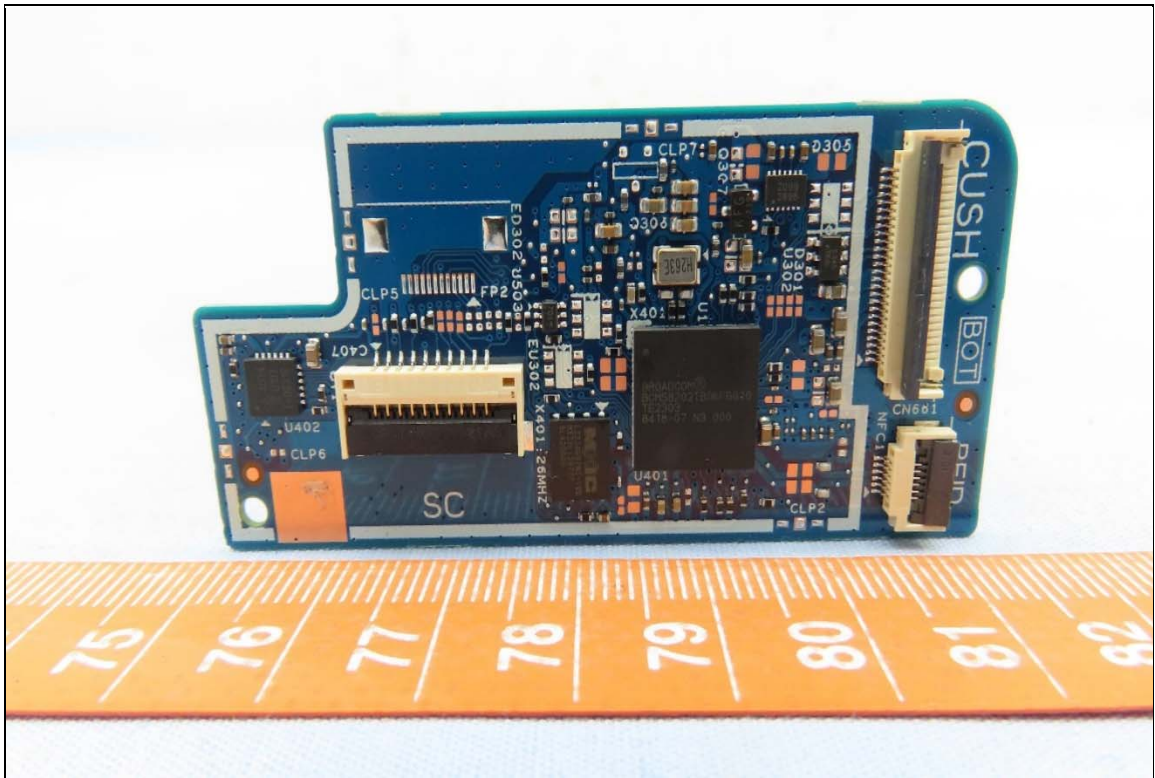
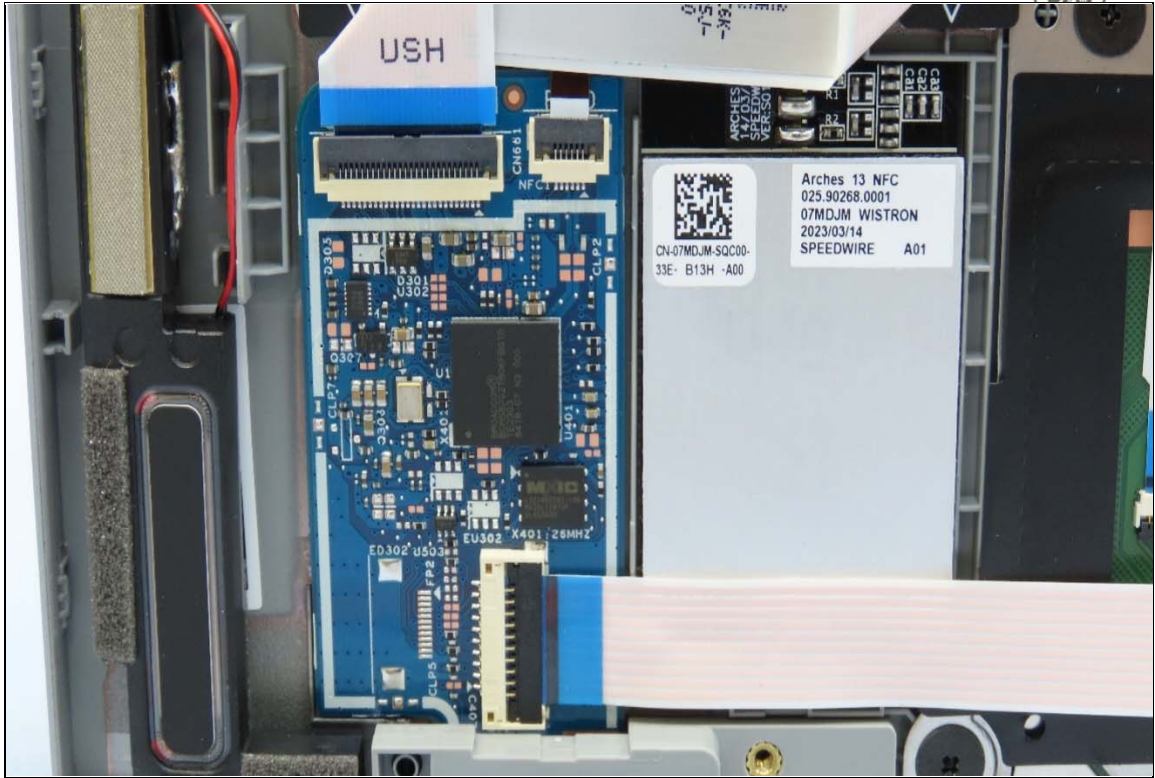
## CONSTRUCTION PHOTOS OF EUT

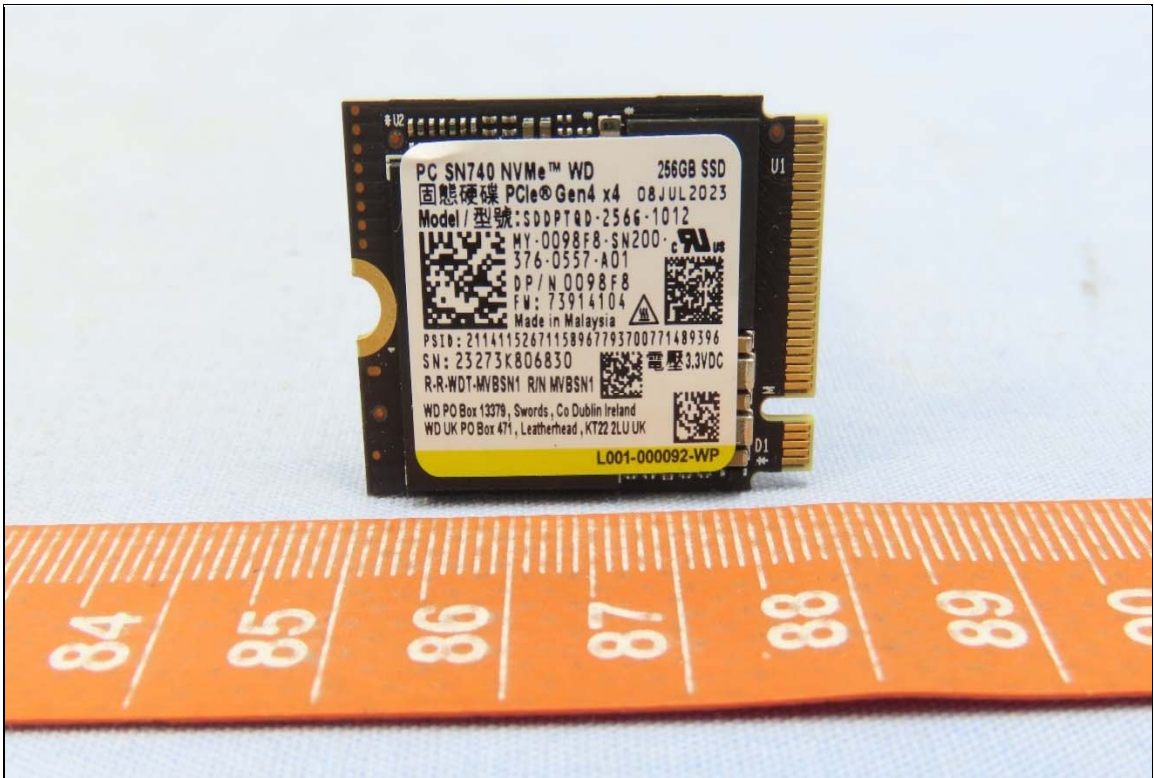
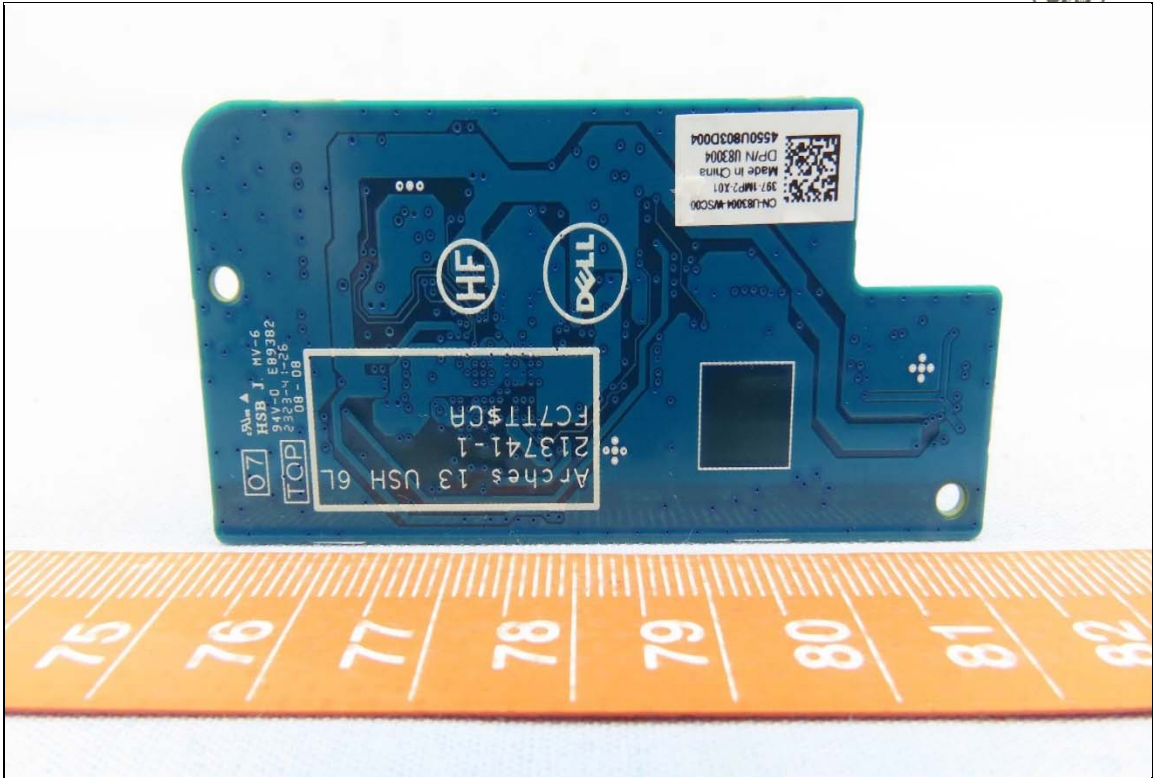
Brand: DELL, Model: DWRFID2305-01

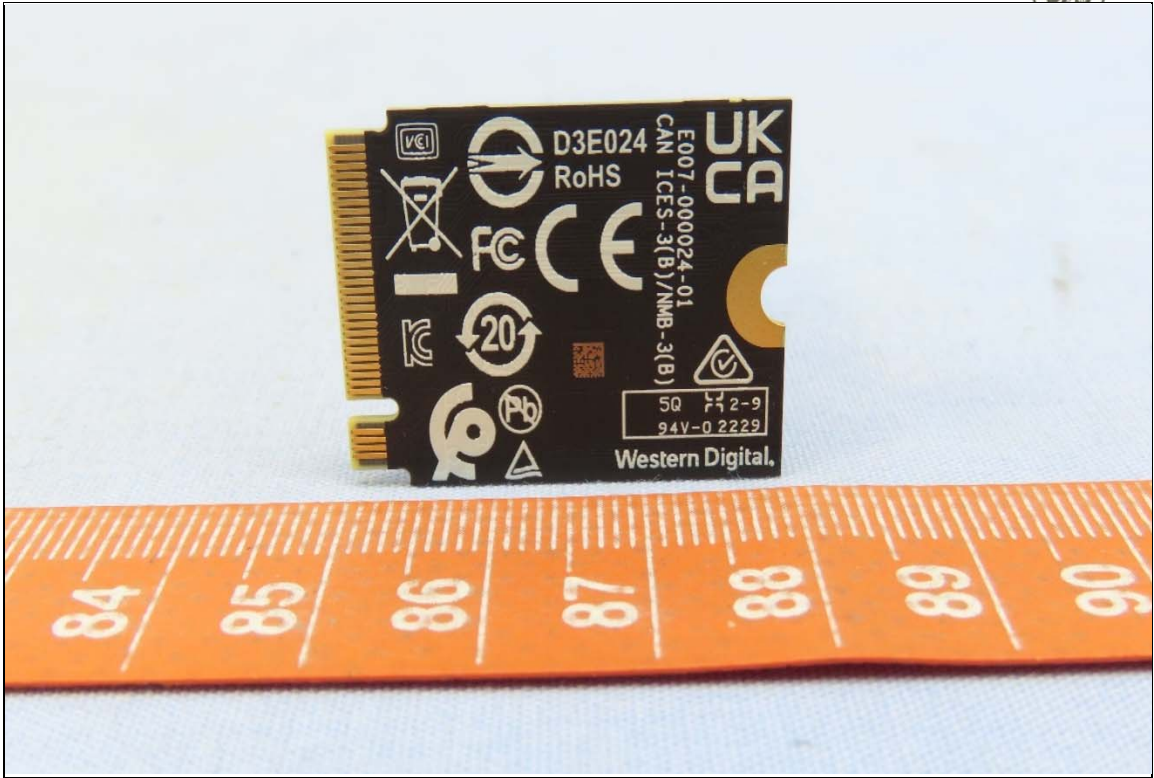


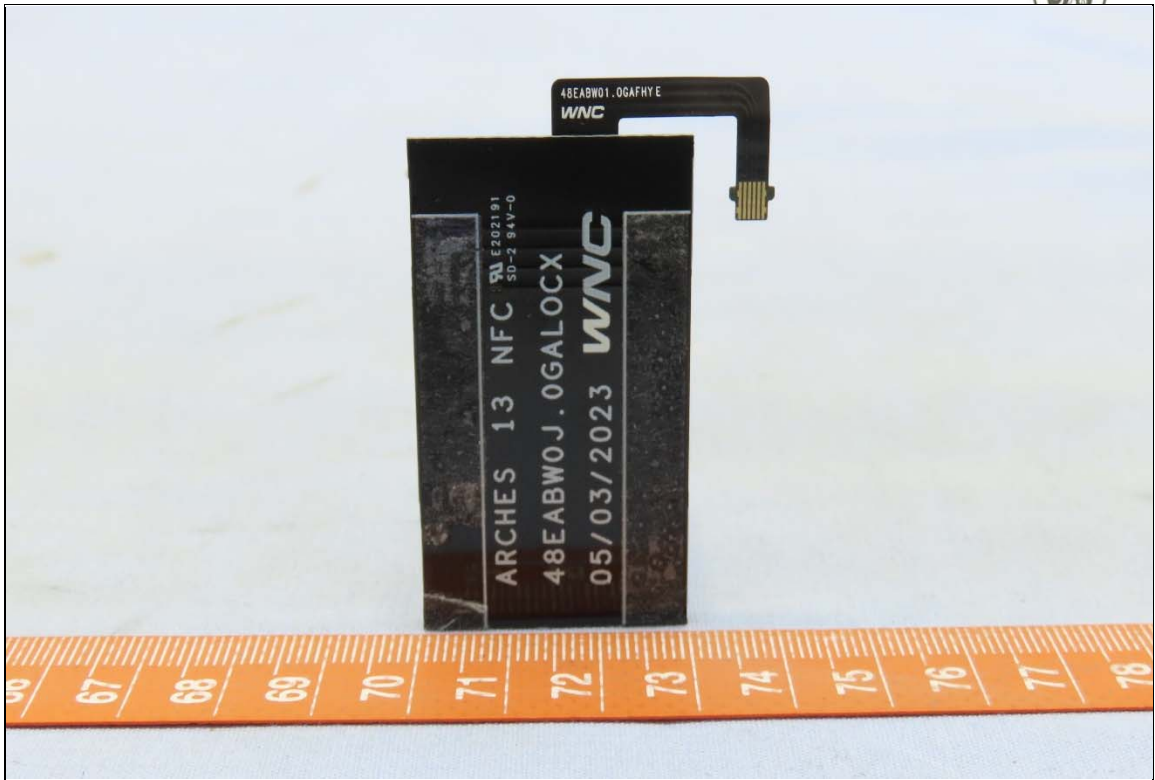
End-product, Portable Computer (Brand: DELL, Model: P182G)

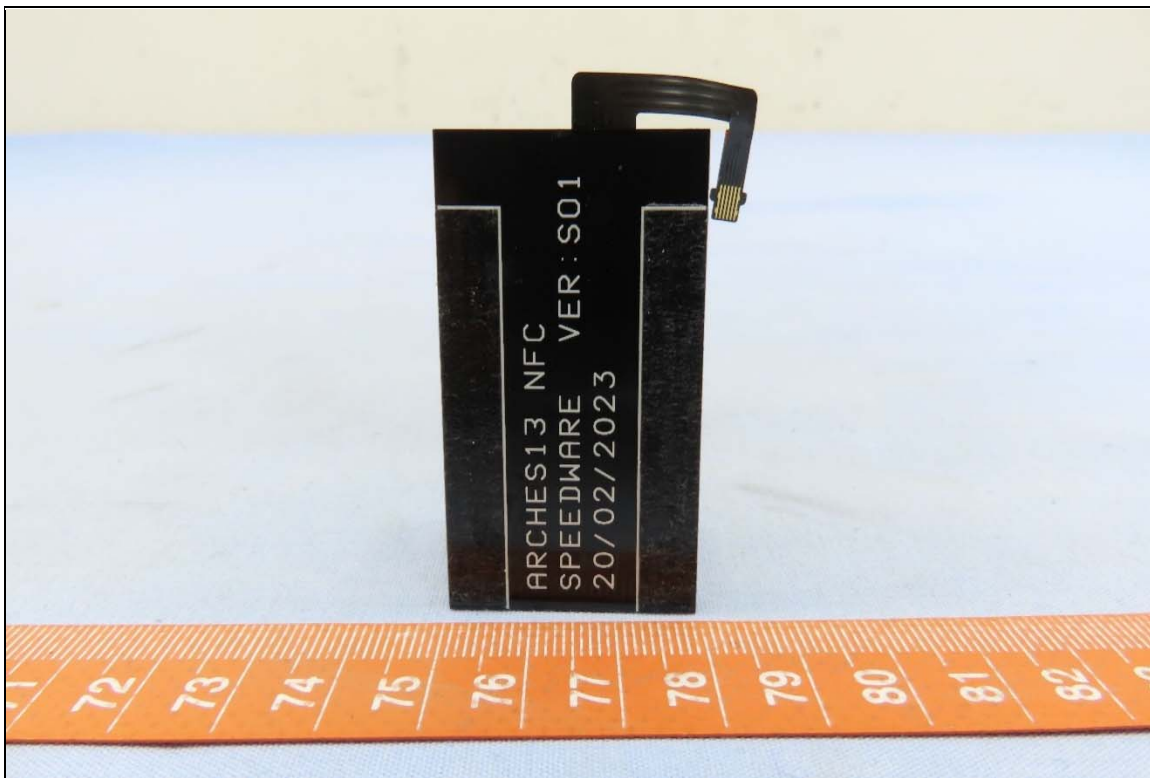
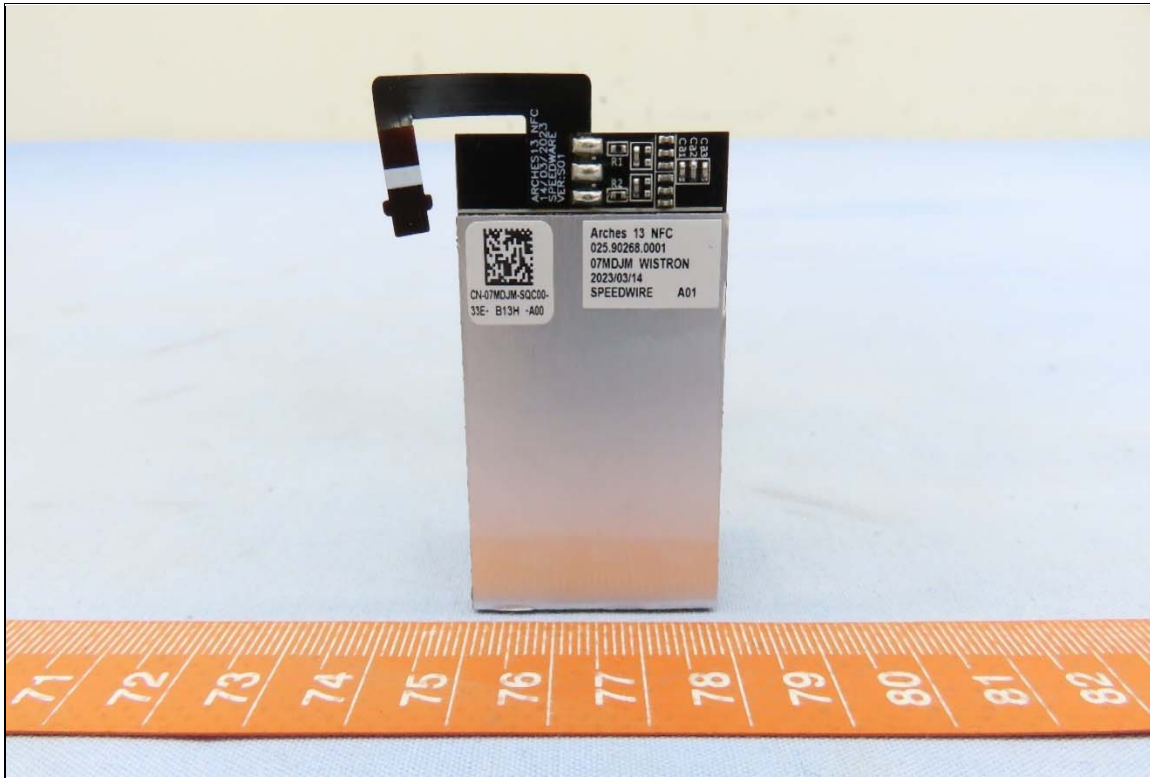




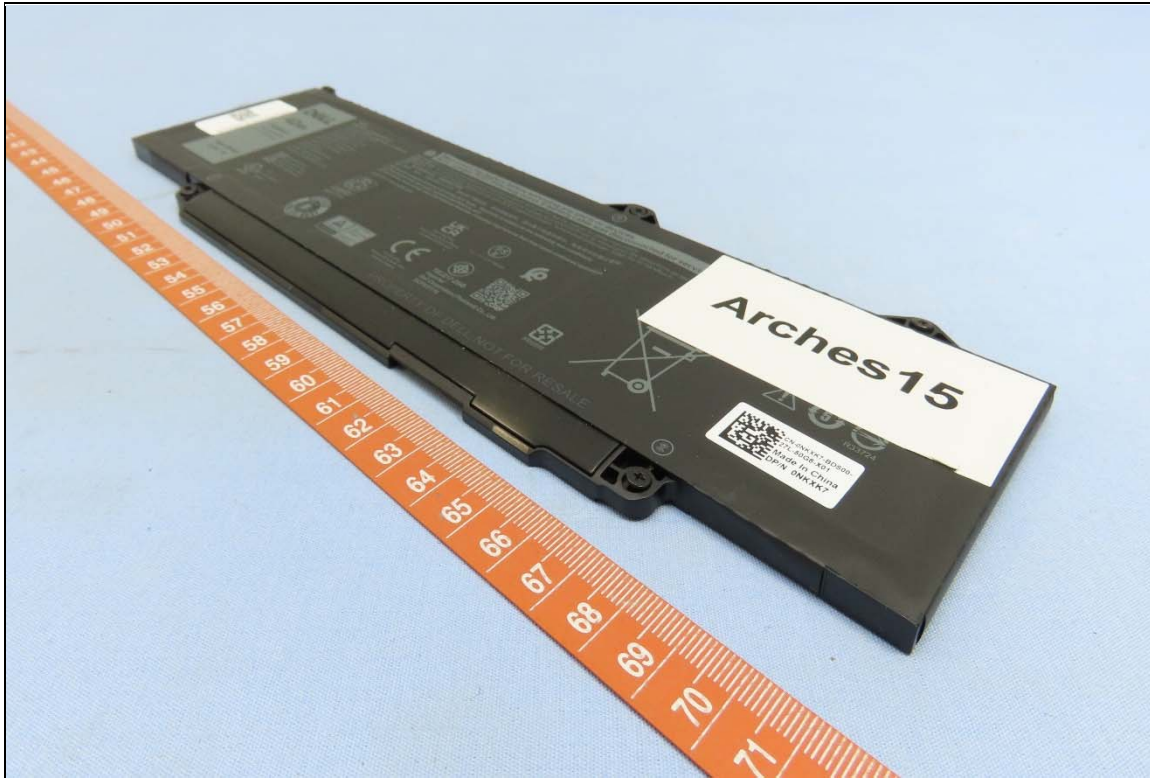









Battery (Brand: DELL, Model: GRWKG)







WTW221214/014Q17N01

DELL


42Wh

Standard  
Rechargeable  
Li-ion Battery

Type GRWKG  
11.4V


**DELL**  
Battery Questions?  
Go to [www.dell.com/regulatory\\_compliance](http://www.dell.com/regulatory_compliance)  
Cells made in China/  
电芯制造地: 中国  
Assembled in China/  
电池组组装地: 中国  
Rechargeable Li-ion Battery/  
锂离子电池组/二次锂电池组  
Model/型号/型号: GRWKG  
Rated Capacity/  
额定容量/额定容量: 3500mAh  
Limited Charging Voltage/  
充电限制电压/充电限制电压: 13.20V


XXXXXXXX-XXXXX  
Shenzhen BYD Lithium  
Battery Company Limited  
A/S 연락처: 080-854-0066


 24LY  
LISTED I.T.E. ACCESSORY  
MH29637

**!** **Disconnect the battery**  
**Note: Longer POST time**

**CAUTION** Do not expose the battery to temp  
**PRÉCAUTION** Ne pas soumettre la batterie à  
**VORSICHT** Der Akku darf niemals Temperatur  
注意: 電池警告事項, 請參閱說明書  
禁止拆解、撞擊、擠壓或投入火中。若出現嚴重  
This device complies with part 15 of the FCC Ru  
(1) This device may not cause harmful interferen  
(2) this device must accept any interference rece  
CAN ICES-3(B)/NMB-3(B)

  
Li-ion 00  
Japan Only

  
RECYCLE  
RBRC  
1.800.822.8837

  
Type Approved  
Safety  
Regulatory Production  
Specifications  
www.ul.com  
UL 1642