

System Check_Head_13MHz

DUT: CLA13-1022

Communication System: CW; Frequency: 13 MHz; Duty Cycle: 1:1

Medium: HSL_13_231117 Medium parameters used: $f = 13$ MHz; $\sigma = 0.729$ S/m; $\epsilon_r = 54.454$; $\rho = 1000$ kg/m³

Ambient Temperature : 23.3 °C; Liquid Temperature : 22.3 °C

DASY5 Configuration:

- Probe: EX3DV4 - SN7695; ConvF(18.04, 18.04, 18.04) @ 13 MHz; Calibrated: 2023/5/22
- Sensor-Surface: 1.4mm (Mechanical Surface Detection)
- Electronics: DAE4 Sn1424; Calibrated: 2023/1/9
- Phantom: ELI V4.0 (20deg probe tilt); Type: QD OVA 001 Bx; Serial: 1079
- Measurement SW: DASY52, Version 52.10 (4); SEMCAD X Version 14.6.14 (7501)

Pin=1000mW/Area Scan (81x81x1): Interpolated grid: dx=1.500 mm, dy=1.500 mm

Maximum value of SAR (interpolated) = 0.803 W/kg

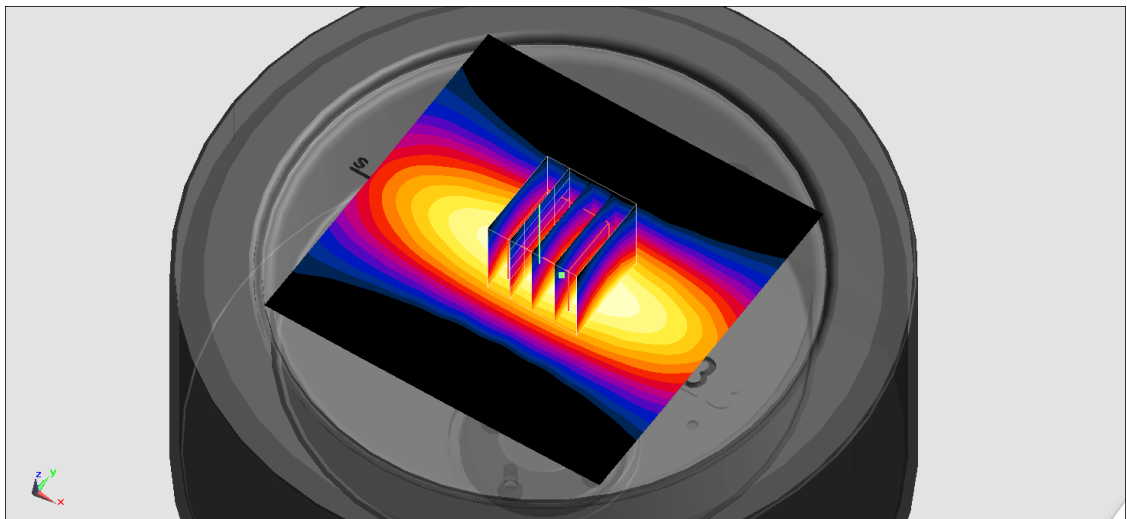
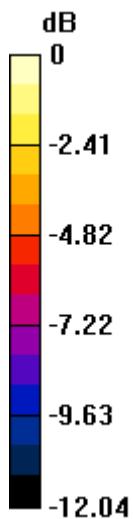
Pin=1000mW/Zoom Scan (5x5x7)/Cube 0: Measurement grid: dx=8mm, dy=8mm, dz=5mm

Reference Value = 32.77 V/m; Power Drift = -0.07 dB

Peak SAR (extrapolated) = 0.995 W/kg

SAR(1 g) = 0.536 W/kg; SAR(10 g) = 0.335 W/kg

Maximum value of SAR (measured) = 0.792 W/kg



0 dB = 0.792 W/kg = -1.01 dBW/kg