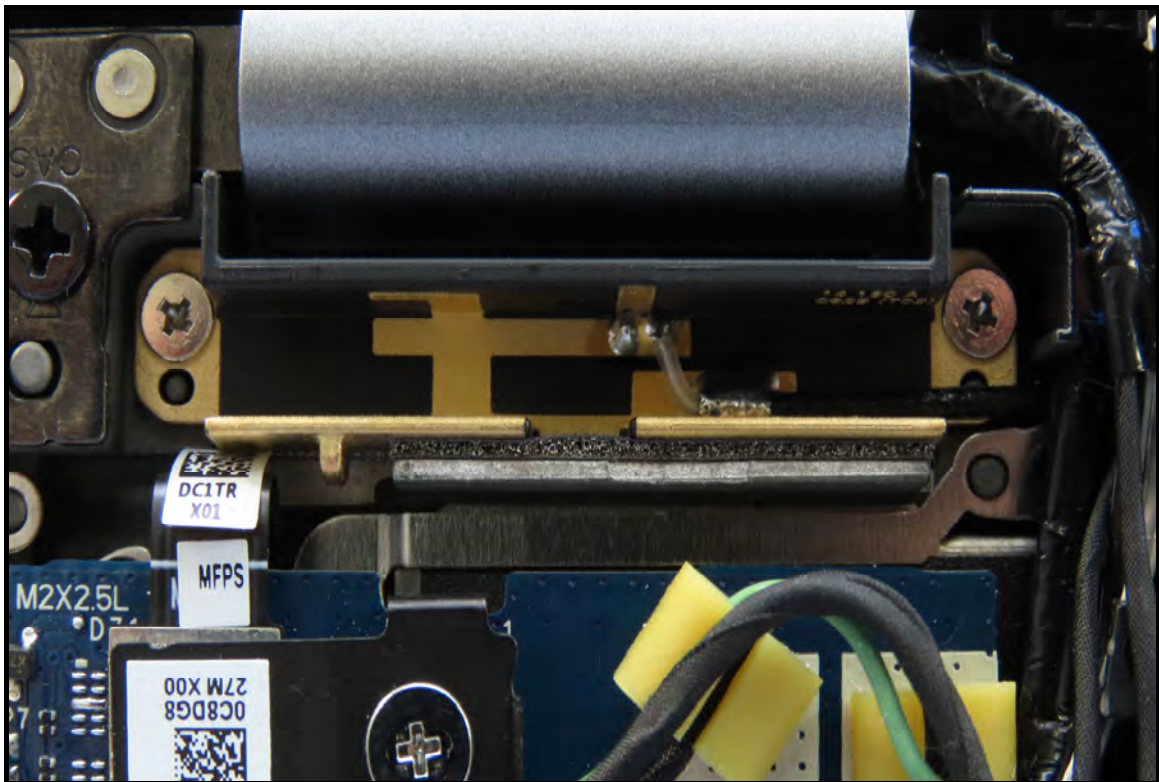
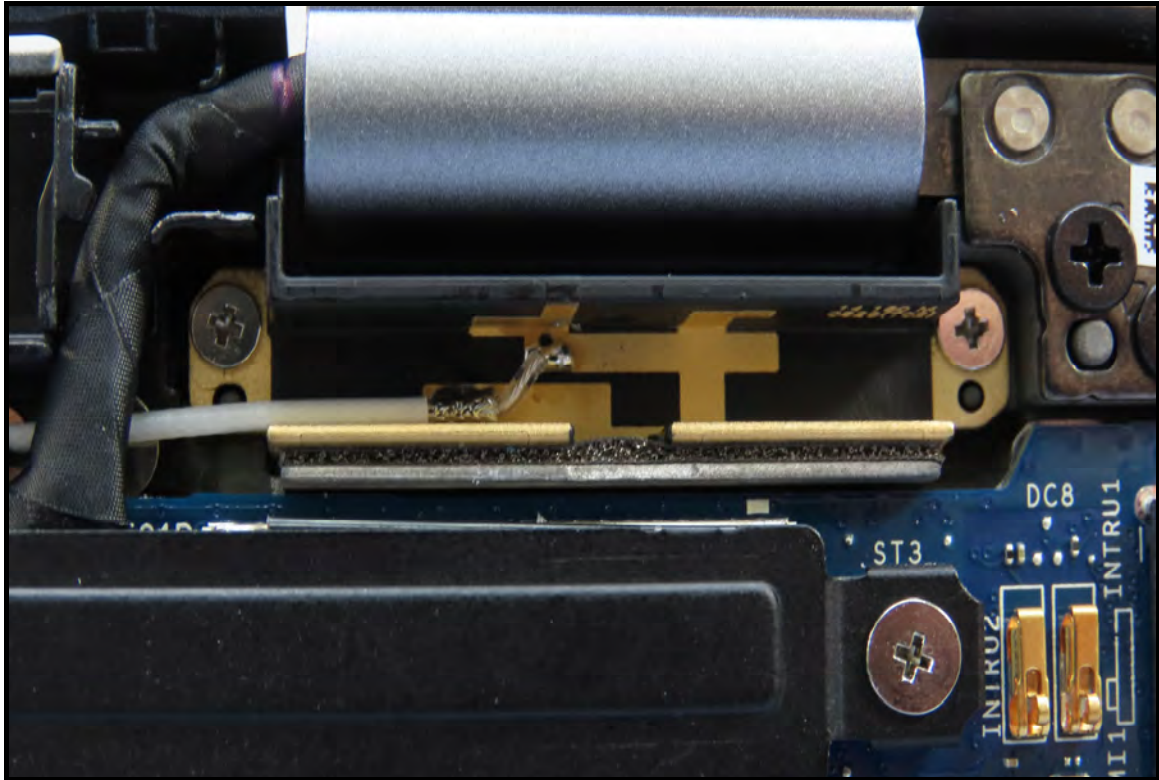
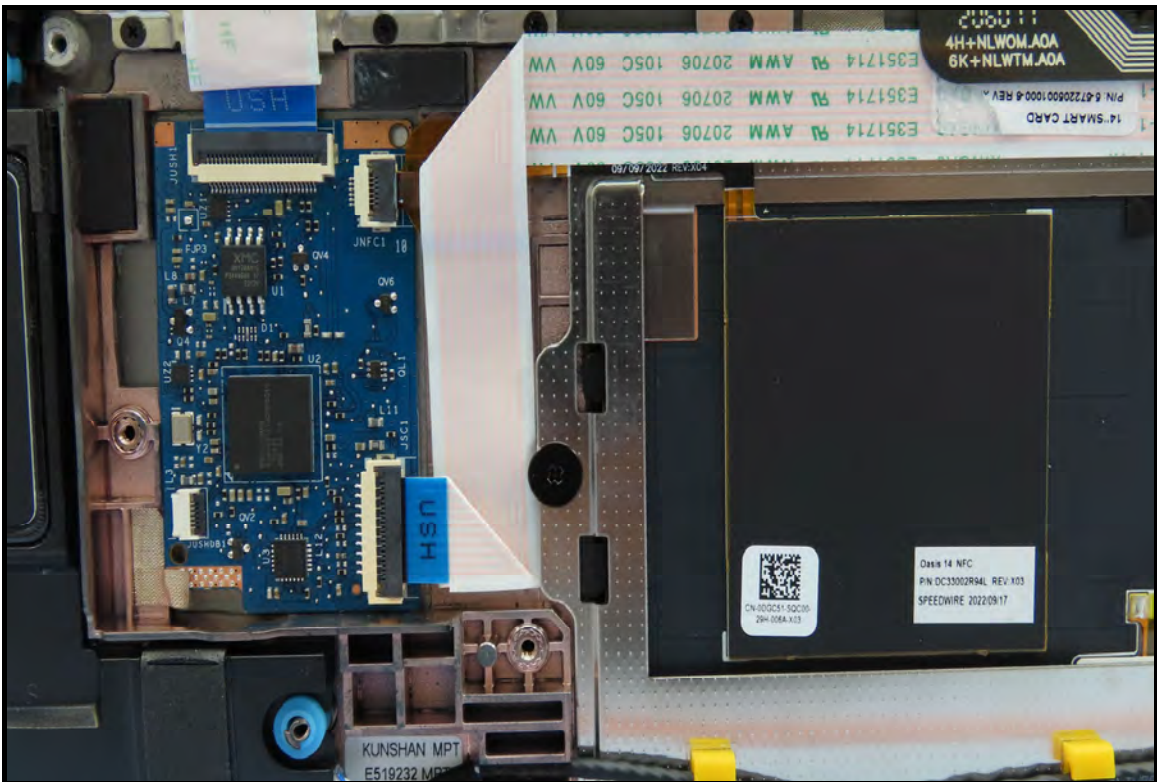
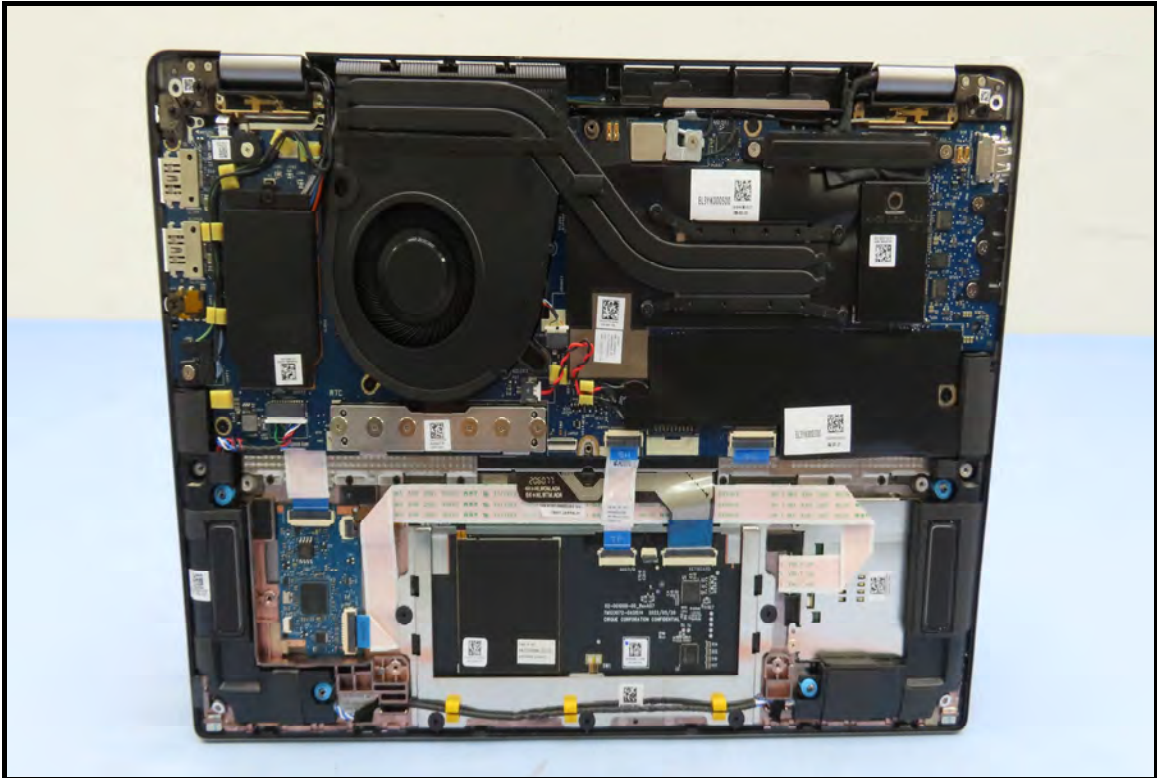


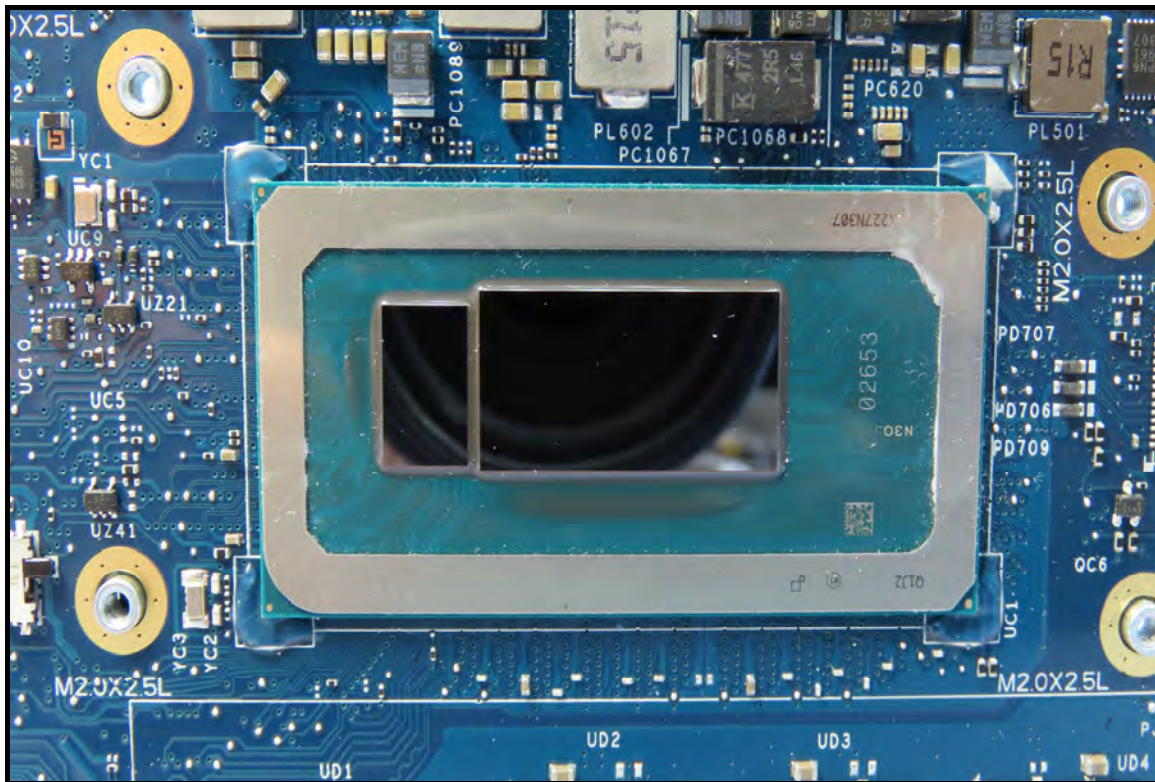
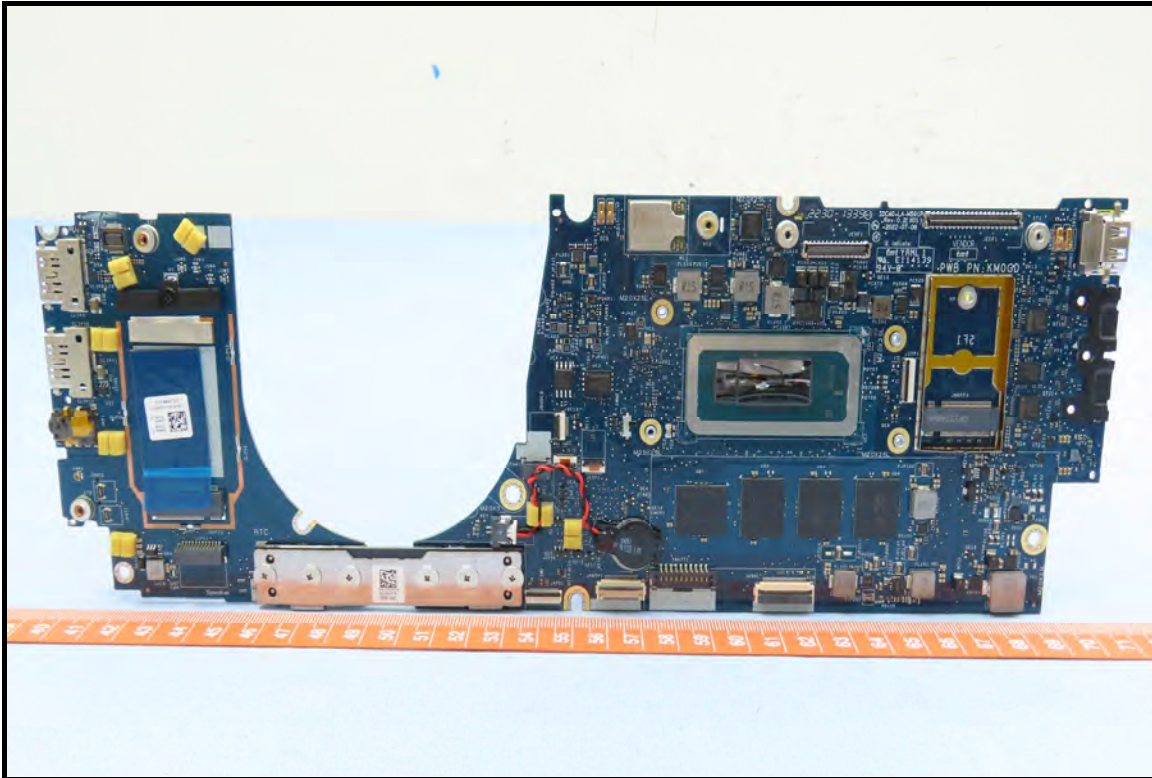
## CONSTRUCTION PHOTOS OF EUT



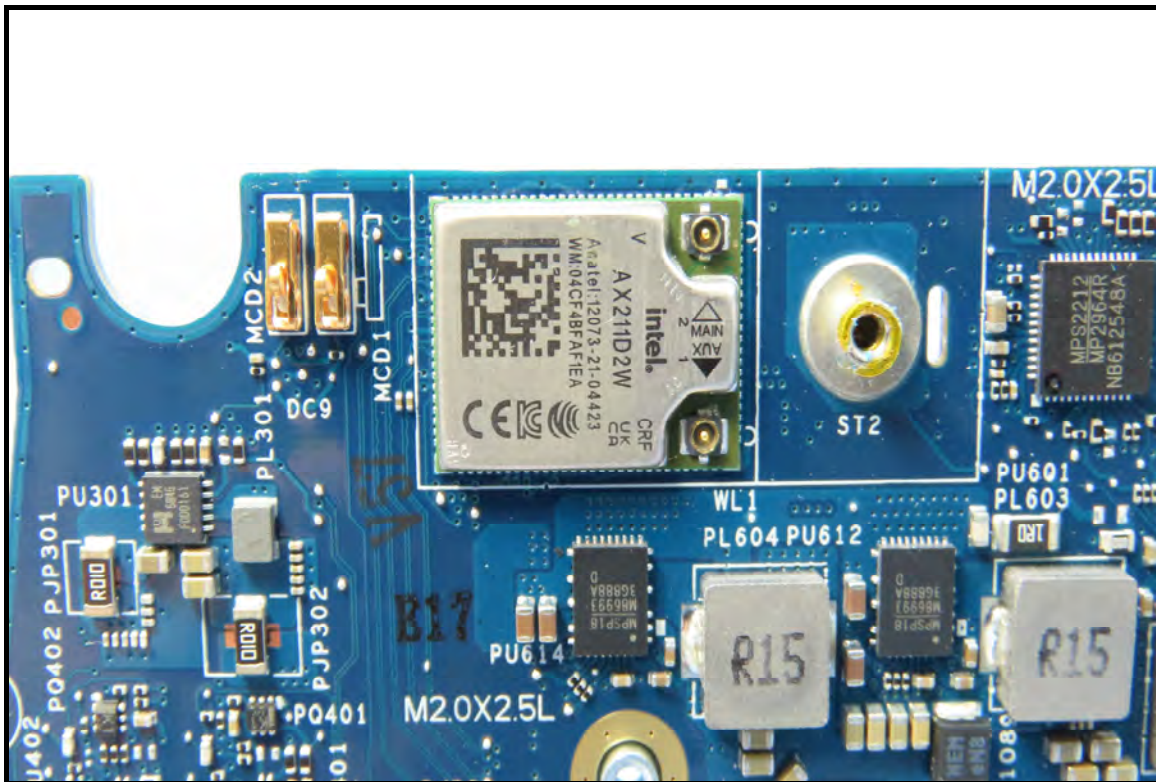
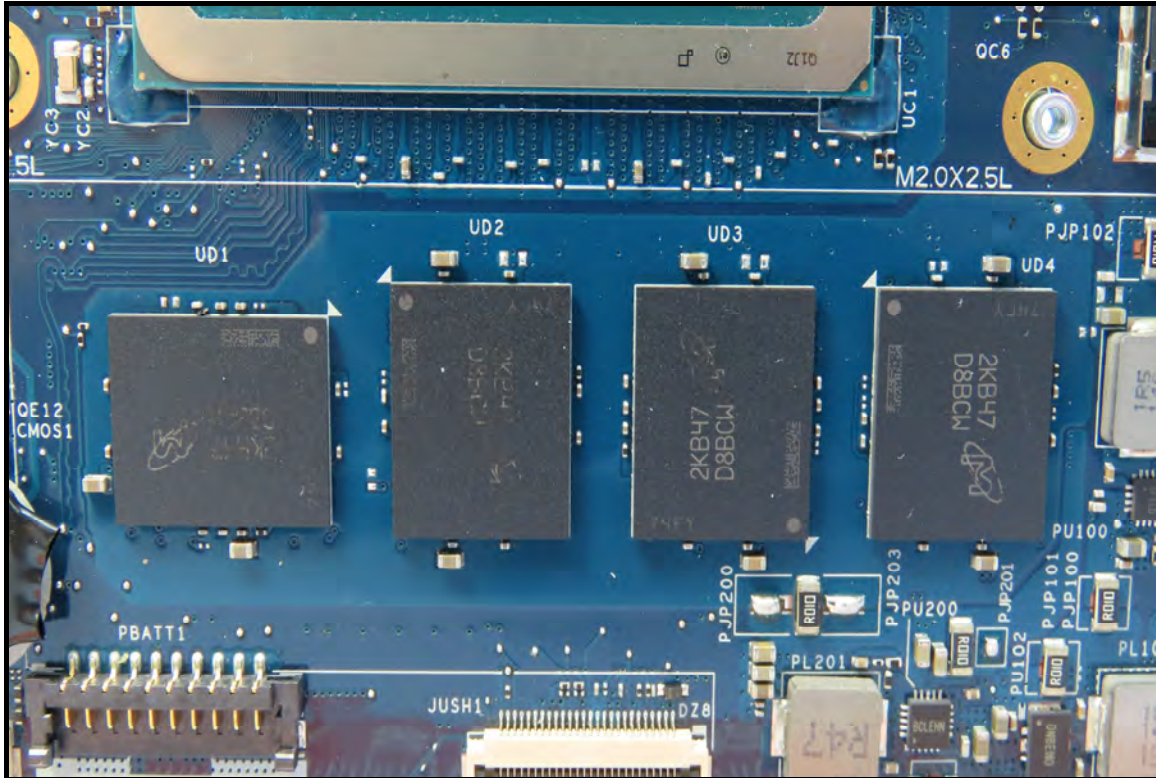






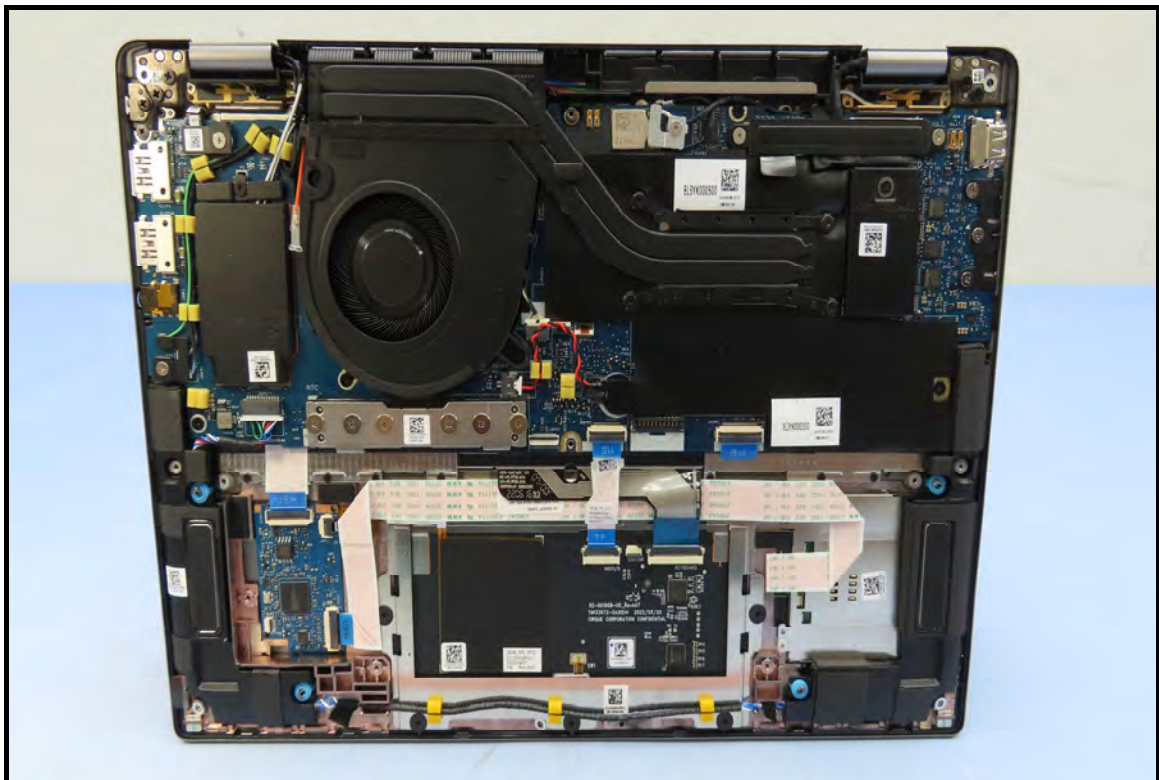
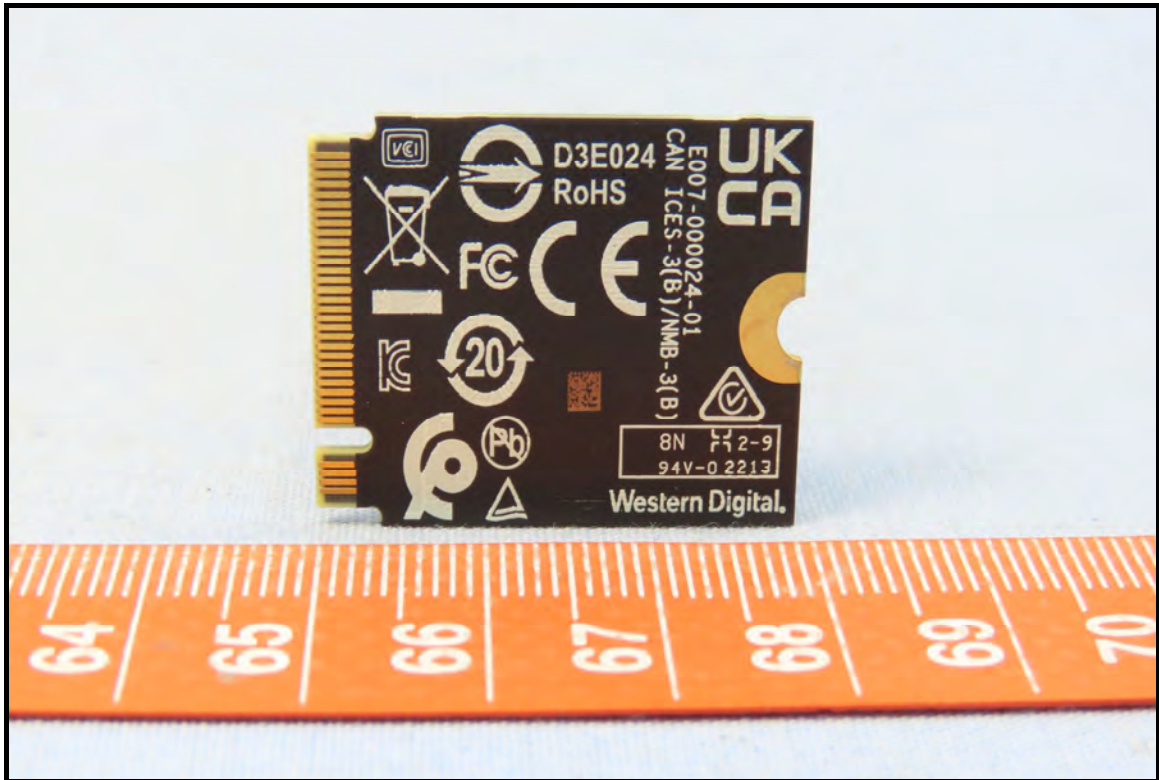






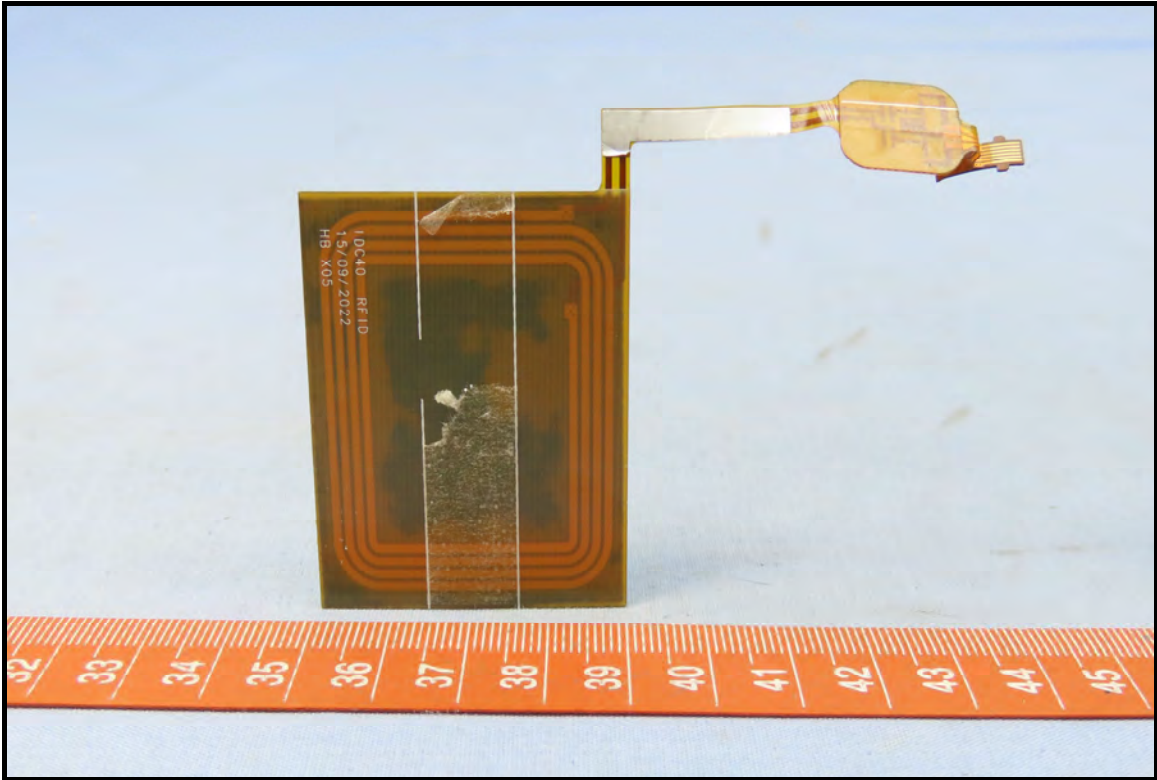






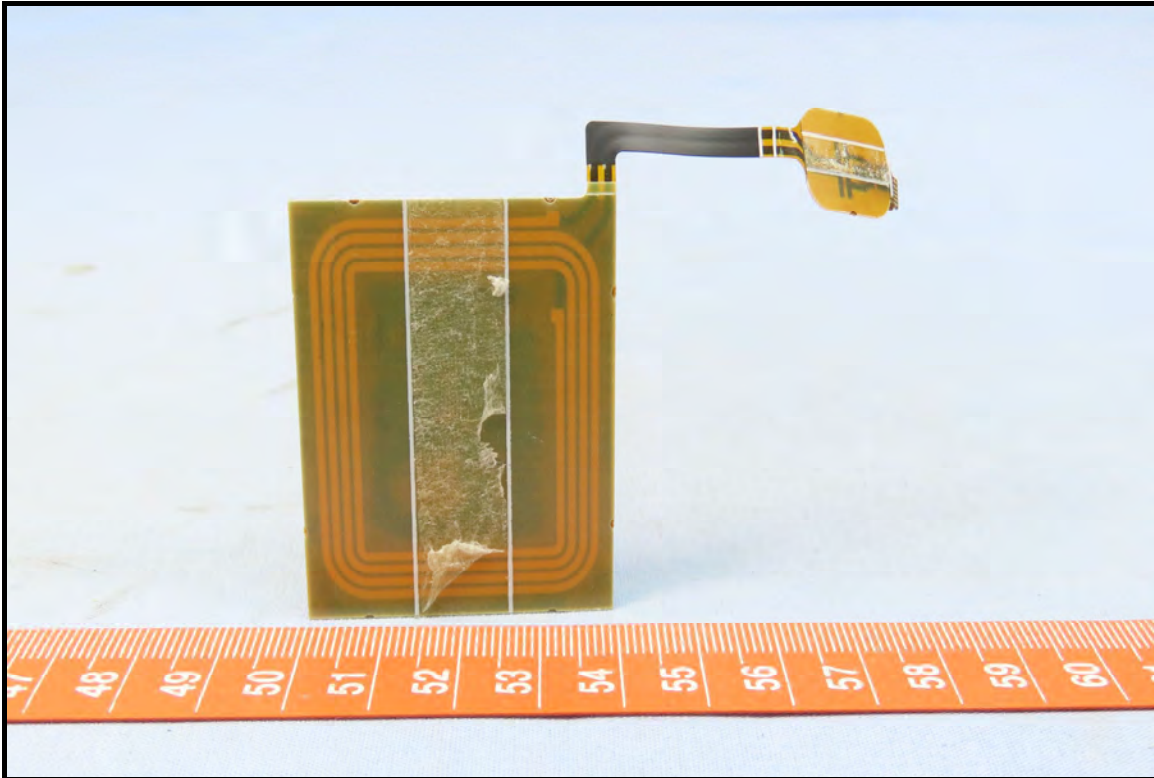




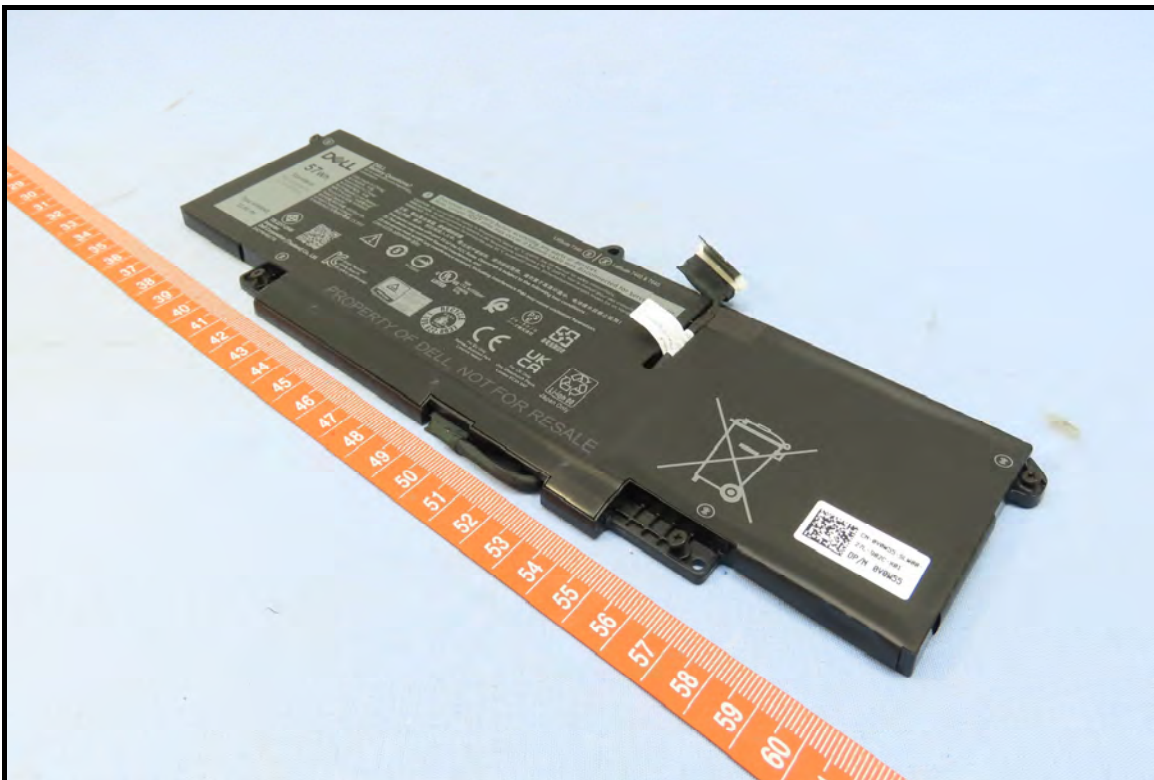


Speedwire Antenna






**Battery, Brand: DELL, Model: WW8N8**









**57Wh**

**Standard**  
Rechargeable  
Li-ion Battery

Type WW8N8  
11.4V

**DELL**  
**Battery Questions?**  
Go to [www.dell.com/regulatory\\_compliance](http://www.dell.com/regulatory_compliance)


Cells made in China/  
电芯制造地: 中国  
Assembled in China/  
电池组装地: 中国  
Rechargeable Li-ion Battery/  
锂离子電池組/二次鋰電池組  
Model/型号/型號: WW8N8  
Rated Capacity/  
額定容量/額定容量: 4878mAh  
Limited Charging Voltage/  
充電限制電壓/充電限制電壓: 13.35V

**!** **Disconnect the battery**  
**Note: Longer POST**


**CAUTION** Do not expose the battery  
**PRÉCAUTION** Ne pas soumettre la batterie  
**VORSICHT** Der Akku darf niemals  
注意: 電池警告事項, 請參閱說明  
禁止拆解、撞擊、擠壓或投入火中


**This device complies with part 15 of FCC Rule 15.247**  
**(1) This device may not cause harmful interference**  
**(2) this device must accept any interference that may be received**  
**CAN ICES-3(B)/NMB-3(B)**





TIS 2217-2548  
Importer:  
Dell Corporation (Thailand) Co., Ltd.  
31CP6/65/78





Simple Technology  
(Chong Qing) Inc.  
A/S 연락처: 080-854-0066



Latitude 7340 | Latitude 7440 & 7640

**!** Disconnect the battery before accessing any parts or devices.  
Note: Longer POST time may occur if battery cable was disconnected for service/repair.

**CAUTION** Do not expose the battery to temperatures above 65 °C (149°F). See the manual for safety instructions.  
**PRÉCAUTION** Ne pas soumettre la batterie à des températures supérieures à 65 °C (149°F). Voir le manuel pour des instructions de sécurité.  
**VORSICHT** Der Akku darf niemals Temperaturen über 65 °C ausgesetzt werden. Sicherheitsanweisungen finden Sie im Handbuch.

注意：電池警告事項，請參閱說明書  
禁止拆解、撞擊、擠壓或投入火中。若出現嚴重鼓脹，請勿繼續使用。請勿置于高溫環境中，電池浸水後禁止使用！

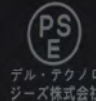
This device complies with part 15 of the FCC Rules. Operation is subject to the following two conditions :

- (1) This device may not cause harmful interference, and
  - (2) this device must accept any interference received, including interference that may cause undesired operation.
- CAN ICES-3(B)/NMB-3(B)

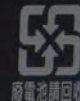
電壓: 13.35V



7G04  
I.T.E. ACCESSORY  
E184259  
SCQ



デル・テクノロ  
ジーズ株式会社



廢電池請回收



ailand) Co., Ltd.



Simplo Technology  
(Chong Qing) Inc.  
A/S 연락처: 080-854-0066



For EU Only  
Raheen Business Park  
Limerick Ireland



For UK Only  
One Creechurch Place,  
London EC3A 5AF



PROPERTY OF DELL, NOT FOR RESAL