

# Latitude 13 7000 Series

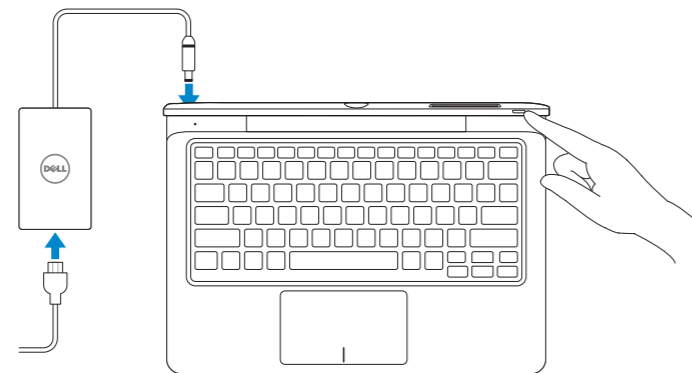
## Quick Start Guide

Quick Start Guide  
Quick Start Guide  
Quick Start Guide  
Quick Start Guide

For Proof Only  
Dell Confidential

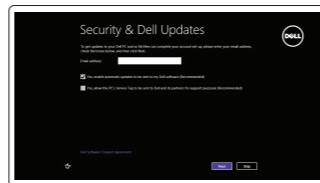
### 1 Connect the power adapter and turn on your computer

Connect the power adapter and turn on your computer  
Connect the power adapter and turn on your computer  
Connect the power adapter and turn on your computer  
Connect the power adapter and turn on your computer



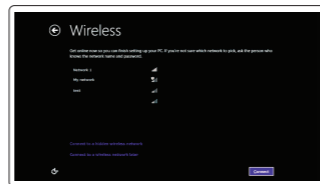
### 2 Finish Windows setup

Finish Windows setup | Finish Windows setup  
Finish Windows setup | Finish Windows setup



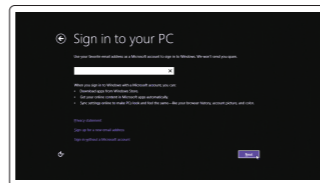
#### Enable security and updates

Enable security and updates  
Enable security and updates  
Enable security and updates  
Enable security and updates



#### Connect to your network

Connect to your network  
Connect to your network  
Connect to your network  
Connect to your network



#### Sign in to your Microsoft account or create a local account

Sign in to your Microsoft account or create a local account  
Sign in to your Microsoft account or create a local account  
Sign in to your Microsoft account or create a local account  
Sign in to your Microsoft account or create a local account

### 3 Explore resources

Explore resources | Explore resources  
Explore resources | Explore resources



#### Help and Tips

Help and Tips | Help and Tips  
Help and Tips | Help and Tips



#### My Dell

My Dell | My Dell  
My Dell | My Dell

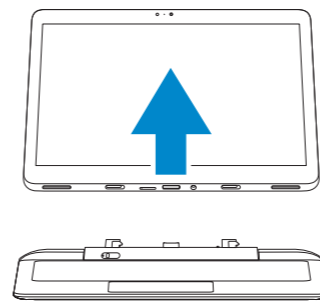
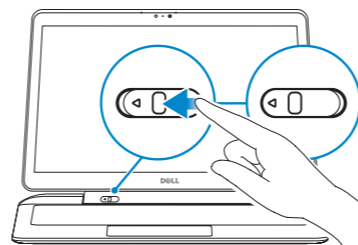


#### Register your computer

Register your computer | Register your computer  
Register your computer | Register your computer

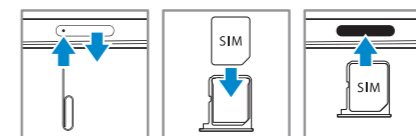
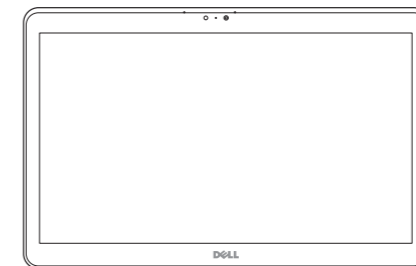
### Undock

Undock | Undock  
Undock | Undock



### Insert micro-SIM card (on LTE/HSPA+ models only)

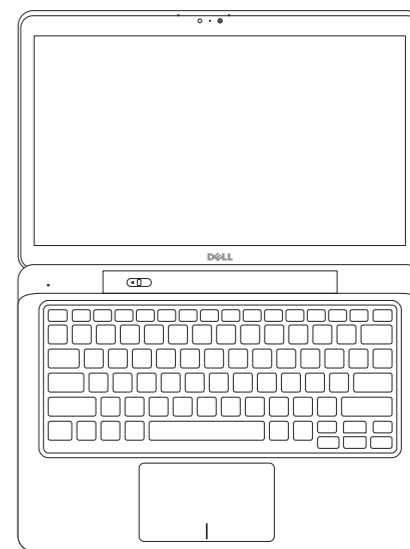
Insert micro-SIM card (on LTE/HSPA+ models only)  
Insert micro-SIM card (on LTE/HSPA+ models only)  
Insert micro-SIM card (on LTE/HSPA+ models only)  
Insert micro-SIM card (on LTE/HSPA+ models only)



**NOTE:** Undock the computer to access SIM card slot.  
**NOTE:** Undock the computer to access SIM card slot.  
**NOTE:** Undock the computer to access SIM card slot.  
**NOTE:** Undock the computer to access SIM card slot.  
**NOTE:** Undock the computer to access SIM card slot.

### Insert optional SD memory card (sold separately)

Insert optional SD memory card (sold separately)  
Insert optional SD memory card (sold separately)  
Insert optional SD memory card (sold separately)  
Insert optional SD memory card (sold separately)



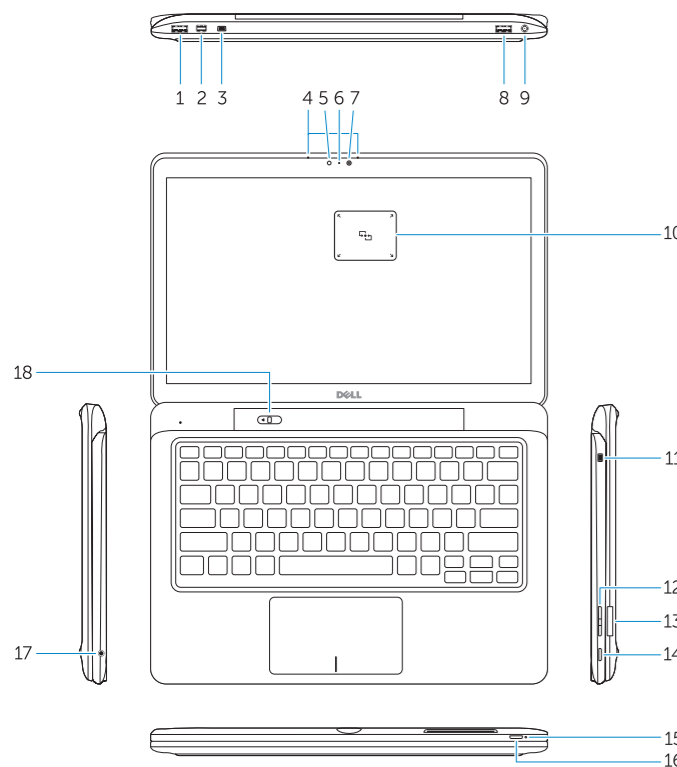
© 2014 Dell Inc.  
© 2014 Microsoft Corporation.

For Proof Only  
Dell Confidential

Printed in China.  
Printed on recycled paper.  
2014-06

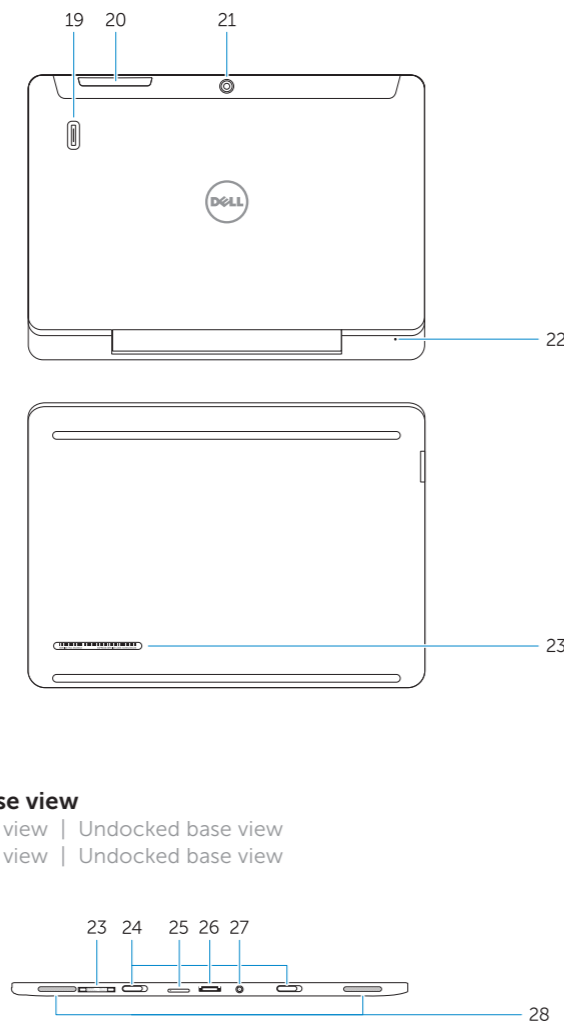
# Features

Features | Features | Features | Features



## Undocked base view

Undocked base view | Undocked base view  
Undocked base view | Undocked base view



1. USB 3.0 connector
2. Mini-DisplayPort connector
3. Noble security-cable slot
4. Microphones
5. Ambient light sensor
6. Camera-status light
7. Camera
8. USB 3.0 connector with PowerShare
9. Power connector
10. Near Field Communication (NFC) reader
11. Noble security-cable slot
12. Volume button
13. Full-sized SD memory card reader
14. Windows button
15. Power-status light
16. Power button
17. Headset connector
18. Undock slider
19. Finger print reader
20. Security card reader
21. Rear camera
22. Power-status light
23. Service-tag label
24. Dock guide slots
25. Micro-SIM reader (LTE/HSPA+ models only)
26. Dock connector
27. Power connector
28. Speakers

1. Language2
2. Language language language
3. Language
4. Language language
5. Language
6. Language language language
7. Language language
8. Language language language
9. Language language language
10. Language language
11. Language
12. Language language language
13. Language language
14. Language language language
15. Language
16. Language language
17. Language language language
18. Language
19. Language language language
20. Language
21. Language language language
22. Language language
23. Language language language
24. Language
25. Language language
26. Language language language
27. Language
28. Language language language

1. Language3
2. Language language language
3. Language
4. Language language
5. Language
6. Language language language
7. Language language
8. Language language language
9. Language language language
10. Language language
11. Language
12. Language language language
13. Language language
14. Language language language
15. Language
16. Language language
17. Language language language

1. Language4
2. Language language language
3. Language
4. Language language
5. Language
6. Language language language
7. Language language
8. Language language language
9. Language language language
10. Language language
11. Language
12. Language language language
13. Language language
14. Language language language
15. Language
16. Language language

1. Language5
2. Language language language
3. Language
4. Language language
5. Language
6. Language language language
7. Language language
8. Language language language
9. Language language language
10. Language language
11. Language
12. Language language language
13. Language language
14. Language language language
15. Language
16. Language language
17. Language language language

17. Language language language
18. Language
19. Language language language
20. Language
21. Language language language
22. Language language
23. Language language language
24. Language
25. Language language
26. Language language language
27. Language
28. Language language language



Bateria integrada de íon de lítio recarregável:  
 Marca: Dell Modelo: X9RG3 / 4H6NV / CDF57 (19.5Vdc, 45Wh)  
 Carregador: AA45NM131 / DA45NM131 / LA45NM131  
 Este produto está homologado pela Anatel, de acordo com os procedimentos regulamentados pela Resolução nº 242/2000 e atende aos requisitos técnicos aplicados, incluindo os limites de exposição da Taxa de Absorção Específica referente a campos elétricos, magnéticos e eletromagnéticos de radiofrequência, de acordo com as Resoluções nº 303/2002 e 533/2009. Este dispositivo está em conformidade com as diretrizes de exposição à radiofrequência quando posicionado a pelo menos 1,0 centímetro de distância do corpo. Para maiores informações, consulte o site da ANATEL - [www.anatel.gov.br](http://www.anatel.gov.br).

**Product support and manuals**  
 Product support and manuals  
 Product support and manuals  
 Product support and manuals  
 Product support and manuals  
[dell.com/support](http://dell.com/support)  
[dell.com/support/manuals](http://dell.com/support/manuals)

**Contact Dell**  
 Contact Dell | Contact Dell  
 Contact Dell | Contact Dell  
[dell.com/contactdell](http://dell.com/contactdell)

**Regulatory and safety**  
 Regulatory and safety | Regulatory and safety  
 Regulatory and safety | Regulatory and safety  
[dell.com/regulatory\\_compliance](http://dell.com/regulatory_compliance)

**Regulatory model**  
 Regulatory model | Regulatory model  
 Regulatory model | Regulatory model  
**P58G**

**Regulatory type**  
 Regulatory type | Regulatory type  
 Regulatory type | Regulatory type  
**P58G001**

**Computer model**  
 Computer model | Computer model  
 Computer model | Computer model  
**Latitude 13-7350**  
**Latitude 13-7350 series [ZHCN only]**

Please keep the device at least 20 cm away from the body. [\[translate in KO only\]](#)

**Información para NOM, o Norma Oficial Mexicana**  
 La información que se proporciona a continuación se mostrará en los dispositivos que se describen en este documento, en conformidad con los requisitos de la Norma Oficial Mexicana (NOM):  
**Importador:**  
 Dell México S.A. de C.V.  
 Paseo de la Reforma 2620 - Piso 11.º  
 Col. Lomas Altas  
 11950 México, D.F.  
 Número de modelo reglamentario: P58G  
 Voltaje de entrada: 100 VAC–240 VAC  
 Corriente de entrada (máxima): 1,3 A  
 Frecuencia de entrada: 50 Hz–60 Hz  
 Corriente de salida: 2,31 A  
 Voltaje de salida: 19,5 VDC