
DWBT2

Secure Digital Input/Output

802.11b/g (54 Mbps) module

Quick Installation Guide

Version 1.0

March 22, 2006

Statement of RoHS

We recognize the need to be a responsible corporate citizen. With respect to the current EU directive and the equivalent domestic legislation which implement Restriction of Hazardous Substances (RoHS), We are committed to producing products supplied into the EU that are fully compliant to the directive on or before its respective effective date.



Note

The SDIO module works based on the operating frequency ranging from 2412 MHz to 2462 MHz and the operating channels 1 to 11.

Installing SDIO wireless driver

This *Quick Installation Guide* provides you with some basic instructions only. The following instructions will guide you through overall installation procedure. In OS-specific situations, you should follow the on-screen instructions to proceed.

Follow these steps below to install the wireless dongle driver.

Step 1: Close all Windows programs that are running.

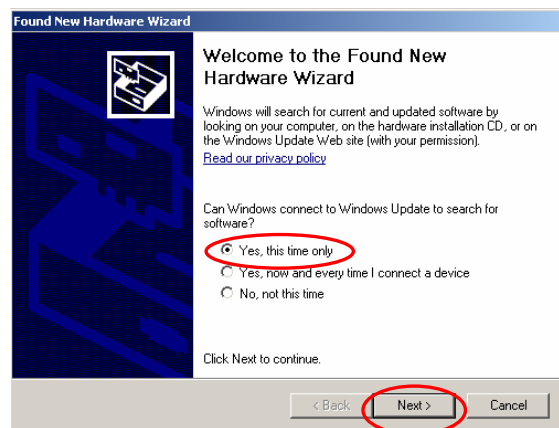
Step 2:

Insert the SDIO into a SD port of your computer, first. Then, a **Welcome to the Found New Hardware Wizard** window pops up.



Step 3:

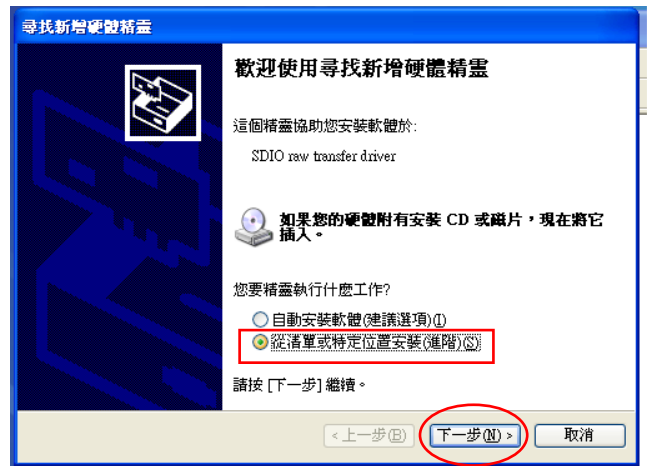
Now, you may, for example, select **Yes, this time only**. Then, click **Next**.



Quick Installation Guide

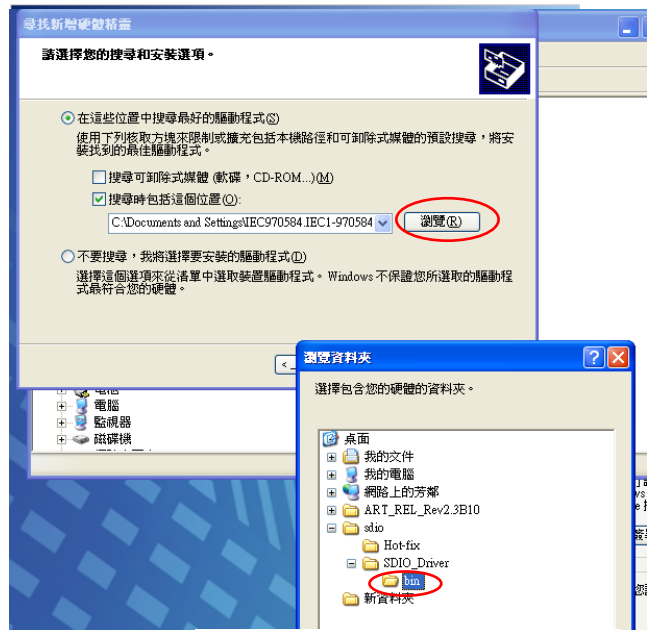
Step 4:

On the window, select **Install from a list or specific location (Advanced)** to search and install the driver. Then, click **Next**.



Step 5:

Tick off **Include this location in the search:** and then click **Browse** to search the driver in a specified directory.



Step 6:

Select the folder that contains the driver for your hardware. Then, click **OK**.

Step 7:

Click **Next**.

Step 8:

You may see a **Hardware Installation** window indicating that you are installing the driver for this hardware . Then, click **Continue Anyway**.

Quick Installation Guide

Step 9:

You see a processing window indicating that the wizard installs the driver... Please wait a moment.

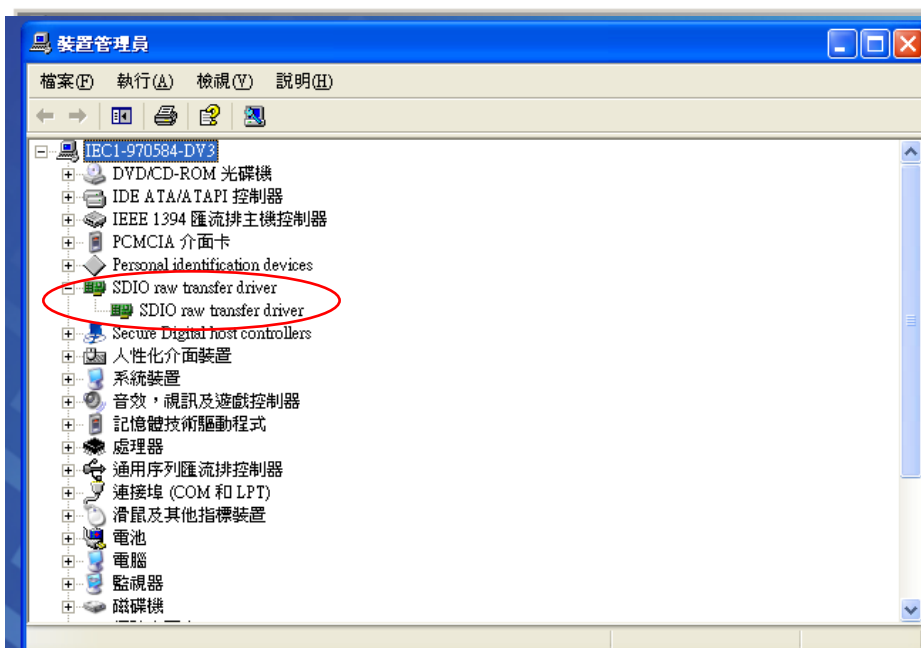


Step 10:

This hardware driver installation is completed. Click **Finish** to complete the installation process.

Step 12:

When you succeed in installing the driver, you will see the hardware name in the platform of Device Manager.



Federal Communication Commission Interference Statement

□

This equipment has been tested and found to comply with the limits for a Class B digital device, pursuant to Part 15 of the FCC Rules. These limits are designed to provide reasonable protection against harmful interference in a residential installation. This equipment generates, uses and can radiate radio frequency energy and, if not installed and used in accordance with the instructions, may cause harmful interference to radio communications. However, there is no guarantee that interference will not occur in a particular installation. If this equipment does cause harmful interference to radio or television reception, which can be determined by turning the equipment off and on, the user is encouraged to try to correct the interference by one of the following measures:

- Reorient or relocate the receiving antenna.
- Increase the separation between the equipment and receiver.
- Connect the equipment into an outlet on a circuit different from that to which the receiver is connected.
- Consult the dealer or an experienced radio/TV technician for help.

□

FCC Caution: Any changes or modifications not expressly approved by the party responsible for compliance could void the user's authority to operate this equipment.

□

This device complies with Part 15 of the FCC Rules. Operation is subject to the following two conditions: (1) This device may not cause harmful interference, and (2) this device must accept any interference received, including interference that may cause undesired operation.

IMPORTANT NOTE:

FCC Radiation Exposure Statement:

This equipment complies with FCC radiation exposure limits set forth for an uncontrolled environment. This equipment should be installed and operated with minimum distance 20cm between the radiator & your body

□

This transmitter must not be co-located or operating in conjunction with any other antenna or transmitter.

This device is intended only for OEM integrators under the following conditions:

- 1)•The antenna must be installed such that 20 cm is maintained between the antenna and users, and
- 2)•The transmitter module may not be co-located with any other transmitter or antenna,
- 3)•For all products market in US, OEM has to limit the operation channels in CH1 to CH11 for 2.4G band by supplied firmware programming tool. OEM shall not supply any tool or info to the end-user regarding to Regulatory Domain change.

As long as 3 conditions above are met, further transmitter test will not be required. However, the OEM integrator is still responsible for testing their end-product for any additional compliance requirements required with this module installed

□

IMPORTANT NOTE: In the event that these conditions can not be met (for example certain laptop configurations or co-location with another transmitter), then the FCC authorization is no longer considered valid and the FCC ID can not be used on the final product. In these circumstances, the OEM integrator will be responsible for re-evaluating the end product (including the transmitter) and obtaining a separate FCC authorization.

End Product Labeling

This transmitter module is authorized only for use in device where the antenna may be installed such that 20 cm may be maintained between the antenna and users. The final end product must be labeled in a visible area with the following:

“Contains FCC ID: E2K-DWBT2”.

Manual Information To the End User

The OEM integrator has to be aware not to provide information to the end user regarding how to install or remove this RF module in the user's manual of the end product which integrates this module.

The end user manual shall include all required regulatory information/warning as show in this manual.

□

European Union Notice:

Radio products with the CE marking comply with the R&TTE Directive (1999/5/EC), the EMC Directive (89/336/EEC) and the Low Voltage Directive (73/23/EEC) issued by the Commission of the European Community.

Compliance with these directives implies conformity to the following European Norms:

- ◆ EN 60950 Product Safety
- ◆ EN 300 328 Technical requirement for radio equipment
- ◆ EN 301 489-1/-17 General EMC requirements for radio equipment

DGT 警語

根據交通部低功率管理辦法規定：

第十二條

經型式認證合格之低功率射頻電機，非經許可，公司、商號或使用者均不得擅自變更頻率、加大功率或變更原設計之特性及功能。

第十四條

低功率射頻電機之使用不得影響飛航安全及干擾合法通信；經發現有干擾現象時，應立即停用，並改善至無干擾時方得繼續使用。

前項合法通信，指依電信規定作業之無線電信。低功率射頻電機須忍受合法通信或工業、科學及醫療用電波輻射性電機設備之干擾。