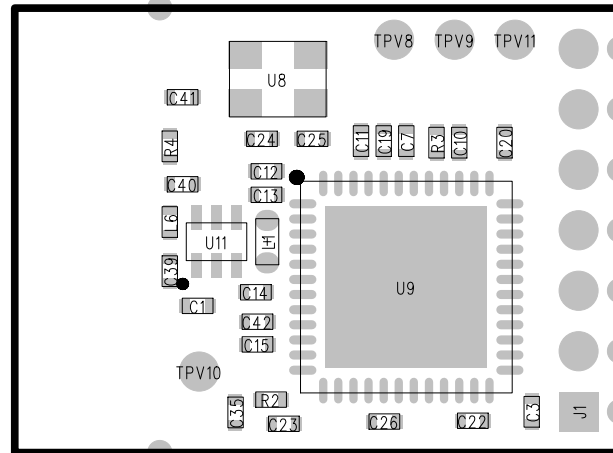
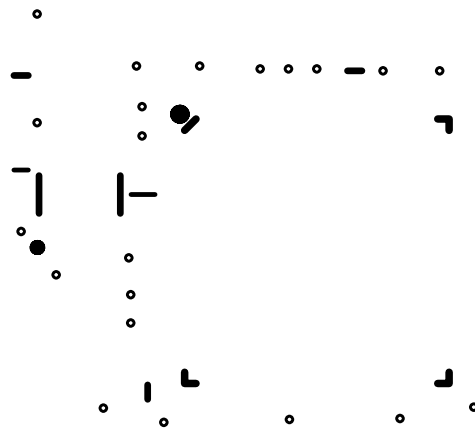


# PRIMARY ASSEMBLY

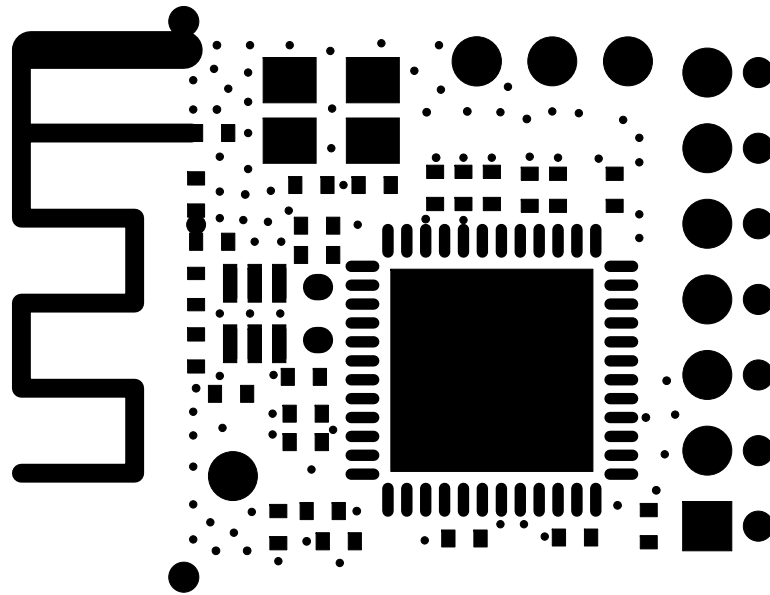
## PRIMARY SILKSCREEN

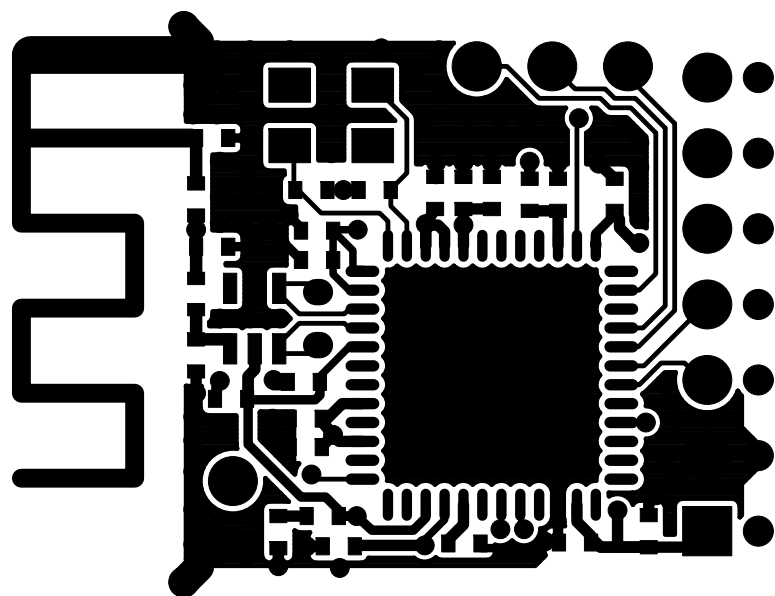


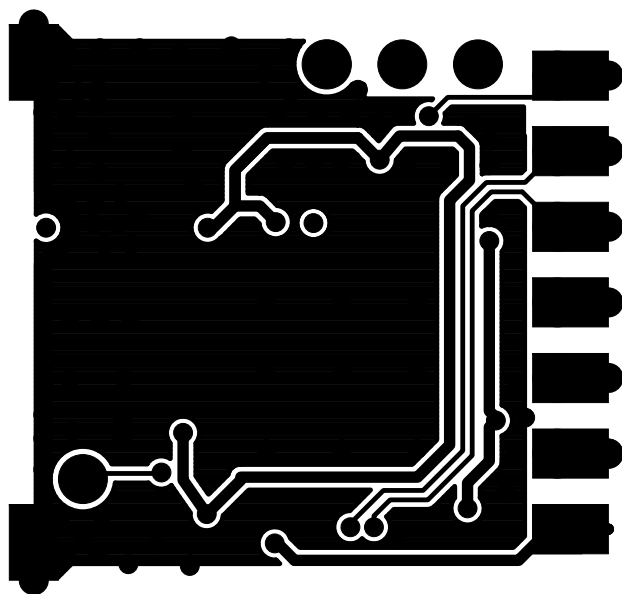
# PRIMARY SILKSCREEN



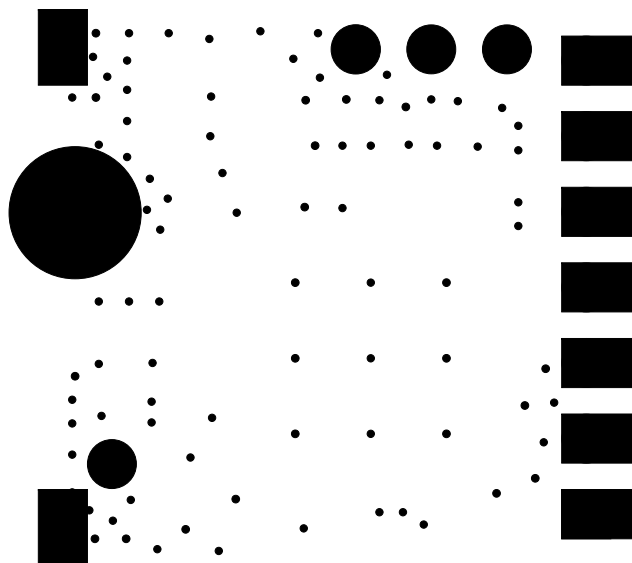
# PRIMARY SOLDER MASK







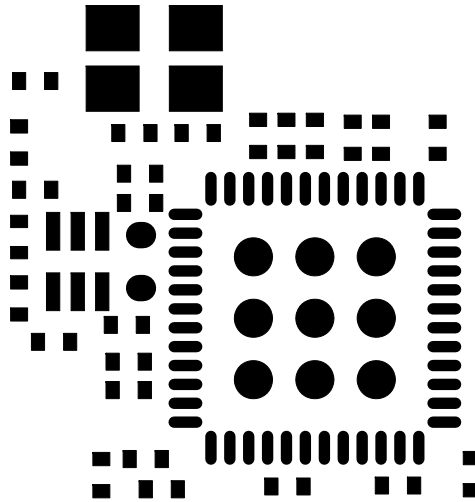
# SECONDARY SOLDER MASK



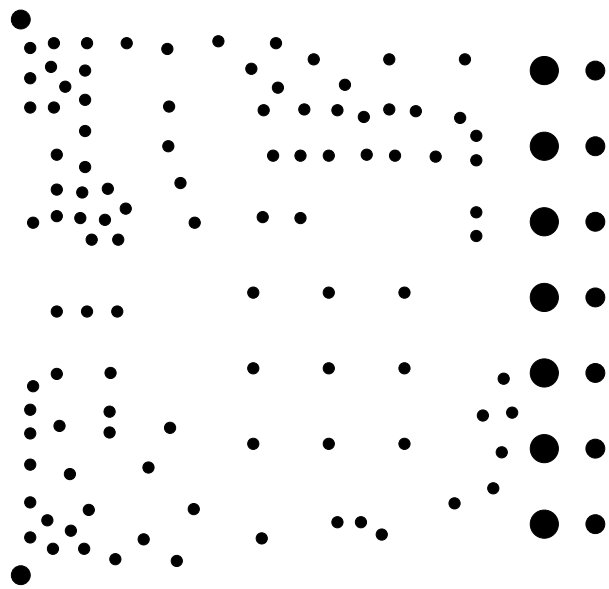


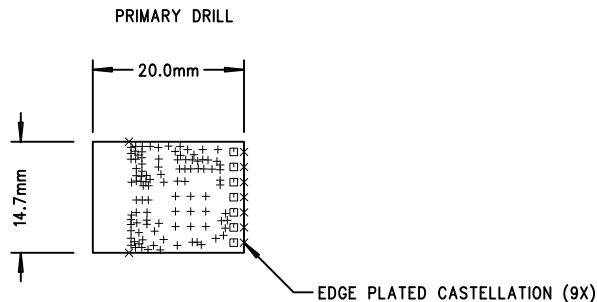


# PRIMARY SOLDER PASTE









# NOTES : UNLESS OTHERWISE SPECIFIED

1. MANUFACTURE IN ACCORDANCE WITH IPC-6012, TYPE 3, CLASS 2.
2. END PRODUCT FEATURES SHALL NOT VARY MORE THAN 20% FROM ARTWORK ORIGINALS.
3. MATERIAL SHALL BE COPPER CLAD FR-4, NEMA GRADE PER IPC-4101/26, COLOR NATURAL.
4. COPPER WEIGHT SHALL BE 0.5 OZ./SQ. FT. BEFORE PLATING.
5. ALL PLATED THROUGH HOLES SHALL HAVE A MINIMUM OF 0.001" COPPER.
6. DRILL HOLE TOLERANCE AFTER PLATING SHALL BE  $\pm 0.003$ ".
7. MINIMUM ANNULAR RING SHALL BE 0.001".
8. MINIMUM ANNULAR RING AT EMERGENT CONDUCTORS SHALL BE 0.003".
9. FINAL PCB THICKNESS SHALL BE 0.031"  $\pm 10\%$ .
10. WARP/TWIST SHALL NOT EXCEED 1.0%.
11. FINISH SHALL BE LPI, BLACK SMOBC, ENIG BOTH SIDES.
12. SILKSCREEN WITH NONCONDUCTIVE WHITE EPOXY INK.
13. REFERENCE ADDITIONAL FAB NOTES IN FILE README.TXT


## LAYER STACKUP

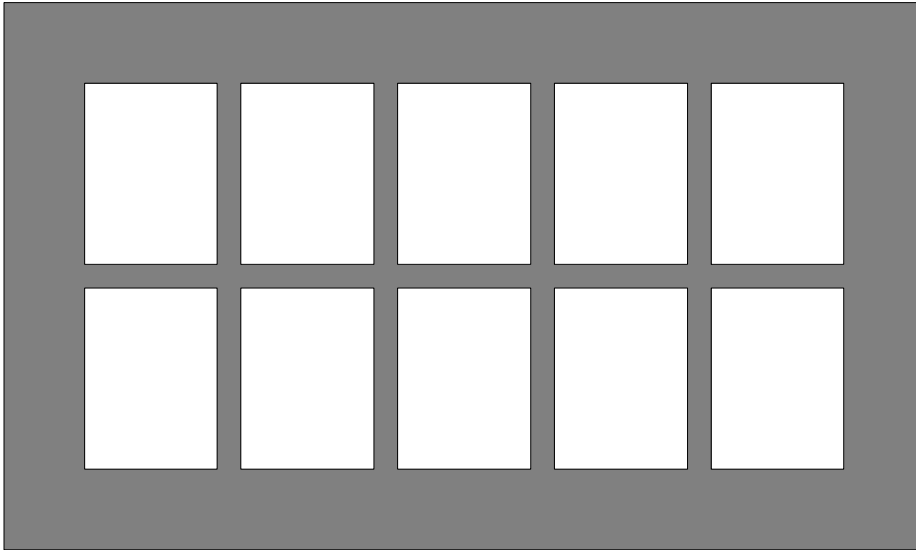
## FILE NAMES

PRIMARY SILKSCREEN	A09_PSS.PHO
PRIMARY SOLDERMASK	A09_PSM.PHO
PRIMARY SIDE	A09_PRI.PHO
SECONDARY SIDE	A09_SEC.PHO
SECONDARY SOLDERMASK	A09_SSM.PHO
SECONDARY SILKSCREEN	A09_SSS.PHO

SCALE: NONE

SIZE	QTY	SYM	PLT	TOOL	TOL
0.30	101	+	P	1	+0/-0.30
0.50	9	X	P	2	+/-0.075
0.75	7	□	P	3	+/-0.075

UNLESS OTHERWISE SPECIFIED			THIS DOCUMENT CONTAINS PROPRIETARY INFORMATION AND SHALL NOT BE DUPLICATED OR USED FOR ANY PURPOSE OTHER THAN THAT FOR WHICH PROVIDED OR DISCLOSED IN WHOLE OR IN PART, WITHOUT THE WRITTEN CONSENT OF SILICON LABORATORIES, INC..			COMPANY:  400 W Cesar Chavez AUSTIN, TX 78701 (512)416-8500 www.silabs.com		
DIMENSIONS ARE IN MILLIMETERS AND APPLY AFTER FINISH			DESIGN CD 22APR2015 LAYOUT CT 23APR2015			NAME: <b>IST-A09</b>		
INTERPRET DRAWING PER MIL-D-1000						OSRAM F ANTENNA		
TOLERANCES						REV : <b>4.C</b>		
HOLE TOLERANCES PER 78027								
DECIMALS .XX +/- .XXX +/-	ANGLES +/-	SURFACES MICROINCHES	PART TO BE FREE OF BURRS			SIZE <b>A</b> PART NUMBER: .		
BREAK EDGES MAX	BEND RADIUS MAX	BEND RELIEF MAX	DO NOT SCALE DRAWING			SCALE 1:1 FABRICATION DRAWING SHEET 1 OF 1		



**IST-A09 REV 4c**

**Size:**

Array: 3.993701 x 2.374803

Part: 0.57874 x 0.787402

**Parts On Array:**

10 Parts

**Matrix:**

5 x 2

**Spacing:**

0.1 x 0.1

**Array Borders:**

Left: 0.35 Right: 0.35

Top: 0.35 Bottom: 0.35

**Notes:**

Please add 4, 0.125" NP tooling holes located 0.125" from tab corners and 3, 40/120 fiduials to each side of array located 0.25" from tooling holes.