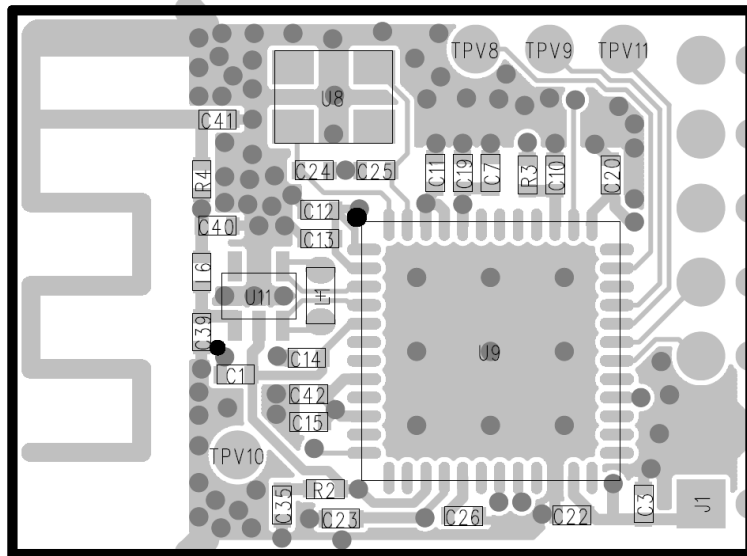




The Aether Module is a small PCB with a 2.4GHz ISM-band transceiver capable of communicating on an 802.15.4 network, such as ZigBee, Thread or 6LoPAN. The module is pictured below:



It has a PCB trace antenna. There is one IC, the EM3555 from Silicon Laboratories, which provides the radio functionality as well as SoC functionality.

Other notable components include a passive balun and a 24 MHz XTAL.

Resistors and capacitors complete the BOM.