

# diNovo **Mini**<sup>™</sup>



User's Guide

Guide de l'utilisateur

## Contents / Table des matières

|   |    |                                       |    |
|---|----|---------------------------------------|----|
| Welcome                                       | 3  | Bienvenue                             | 23 |
| Product package                               | 4  | Coffret du produit                    | 24 |
| Your diNovo Mini                              | 5  | Votre diNovo Mini                     | 25 |
| diNovo Mini at a glance (top)                 | 6  | Aperçu du clavier diNovo Mini (haut)  | 26 |
| diNovo Mini at a glance (base)                | 7  | Aperçu du clavier diNovo Mini (bas)   | 27 |
| Installation                                  | 10 | Installation                          | 28 |
| Configuration                                 | 11 | Configuration                         | 31 |
| Using diNovo Mini                             | 12 | Utilisation du clavier diNovo Mini    | 32 |
| Tips and troubleshooting                      | 17 | Astuces et dépannage                  | 37 |
| Service and support                           | 18 | Services et assistance                | 38 |
| Compliance and FCC statement                  | 20 | Conformité et déclaration FCC         | 40 |
| Logitech hardware product<br>limited warranty | 21 | Garantie limitée du matériel Logitech | 41 |

## Welcome

Thank you for purchasing the Logitech®  
diNovo Mini™.

This document provides a comprehensive guide  
to using your new diNovo Mini.

If you need more information about this product,  
visit *[www.logitech.com](http://www.logitech.com)*

## Product package



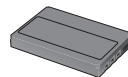
diNovo Mini



Power supply



USB mini-receiver



Rechargeable lithium-ion battery



CD-ROM with SetPoint™ software



Cleaning cloth

## Your diNovo Mini

The Logitech® diNovo Mini™ puts you in total control of your PC entertainment with a palm-sized keyboard plus media remote and ClickPad™.

Sit back and enjoy movies and music, share photos, and surf the Web—from anywhere in the room. Bluetooth® wireless technology delivers reliable operation from up to 30 feet (10 meters) under most conditions.

The diNovo Mini gives you all the advantages of a full-size keyboard. Type search text, URLs, and IM messages. Automatic backlighting allows effortless text entry, even in low light.

Convenient media controls make the diNovo Mini the perfect remote control for PC entertainment.

The dual-purpose ClickPad gives you more ways to enjoy your digital life. Use it as a touch pad to point, scroll, and click, or as a directional pad to navigate your favorite media (perfect for Windows Media® Center).

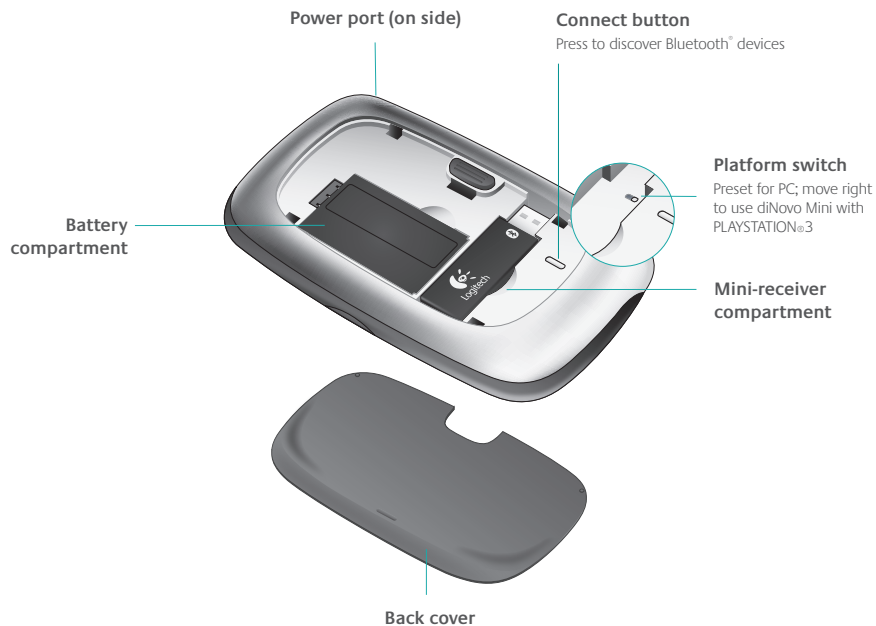
Advanced lithium-ion batteries recharge faster and last longer—up to one month between charges.

Compact and stylish, the diNovo Mini helps keep your home free of clutter.

## diNovo Mini at a glance (top)



## diNovo Mini at a glance (base)



# Installation

## Insert battery

- 1 Open the back cover of the diNovo Mini by sliding the tab up.
- 2 Insert the lithium-ion battery as shown in the illustration.
- 3 Replace the back cover.

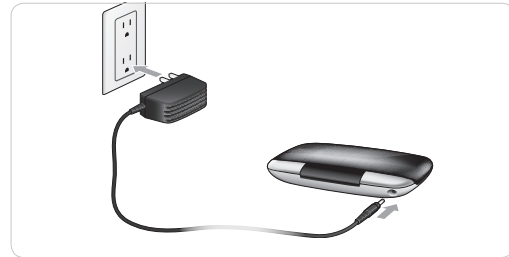
**Note:** If you are going to use your diNovo Mini with a PLAYSTATION®3, move the platform switch to the right to enable the device for use with the console. (See page 7.)





### Connect power

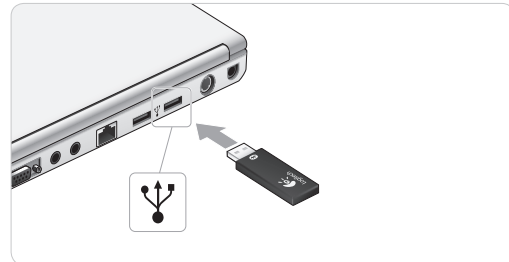
- 1 Plug the AC cable into the power port on the side of the diNovo Mini.
- 2 Plug the AC adapter into a wall socket to start charging the lithium-ion battery. A full charge is about four hours for up to one month of use. A ten-minute charge provides about one day of use.



### Connect mini-receiver

- Plug the mini-receiver into a USB port on your computer.

**Note:** The mini-receiver is not required for a PLAYSTATION®3 or PC with built-in Bluetooth® wireless technology. Follow the host device instructions for discovering Bluetooth® devices. When prompted, press the red connect button on the base of the diNovo Mini to make it discoverable. However, for best results we recommend that you use the USB mini-receiver.



# Installation

## **Install the SetPoint software**

Insert the provided CD-ROM and follow the instructions for installing the device drivers and setup software.

Check for updates to SetPoint at *[www.logitech.com/downloads](http://www.logitech.com/downloads)*