



022211255

Testing the Future

LABORATORIES, INC.

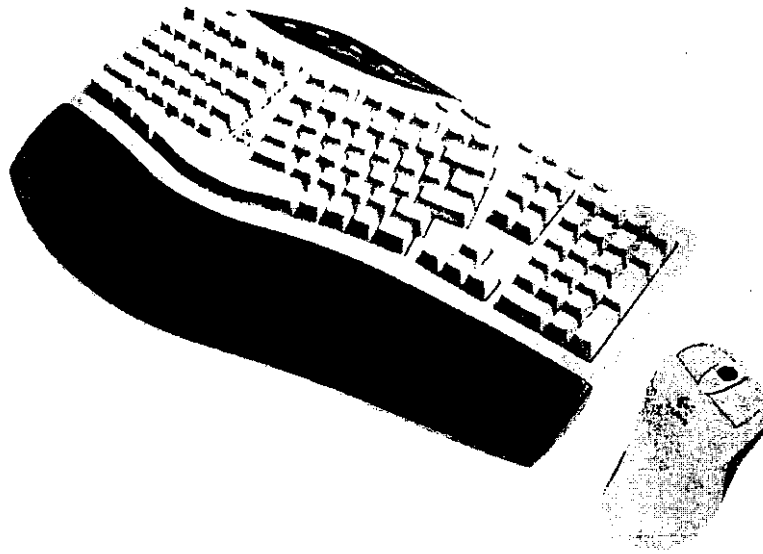
EXHIBIT E

SYSTEM MANUAL



Logitech Cordless Desktop™

User's Guide



© 1999 Logitech. All Rights Reserved. Logitech, the Logitech logo, and the Logitech products referred to herein are either the trademarks or the registered trademarks of Logitech. All other trademarks are the property of their respective owners.

Part Number:

Software License Agreement. LOGITECH IS WILLING TO LICENSE THE ENCLOSED SOFTWARE TO YOU ONLY ON THE CONDITION THAT YOU ACCEPT ALL OF THE TERMS CONTAINED IN THIS LICENSE AGREEMENT. **This is a legal agreement between you (either an individual end-user or an entity) and Logitech. By opening the software package, you are agreeing to be bound by the terms and conditions of the Agreement. If you do not agree to the terms of this Agreement, promptly return the software package and other items that are part of this product in their original package with your payment receipt to your point of purchase for a full refund. Grant of License.** Logitech and its suppliers grant you a nonexclusive license to use one copy of the enclosed software program ("Software") on one computer only with the Logitech product you have purchased. No other rights are granted. The Software is in use if it is loaded on the computer's permanent or temporary memory. For backup purposes only, you may make one copy of the Software. You must include on the backup copy all copyright and other notices included on the Software as supplied by Logitech. Installation on a network server for the sole purpose of your internal distribution of the Software is permitted only if you have purchased an individual Software package for each networked computer to which the Software is distributed. **Restrictions.** Logitech and its suppliers retain ownership of the Software. You shall not decompile, disassemble, reverse-engineer, or modify the Software in any way. You may not transmit the Software over a network (except as expressly permitted above), by telephone, or electronically using any means. You may not transfer the Software except upon a permanent transfer of the enclosed Logitech product provided that all Software updates are included in the transfer, you do not retain a copy of the Software, and the transferee agrees to be bound by the terms and conditions in this license. Upon any violation of any of the provisions of this Agreement, rights to use the Software shall automatically terminate and the Software must be returned to Logitech or all copies of the Software destroyed. **Limited Product Warranty.** Logitech warrants that any hardware products accompanying this documentation shall be free from significant defects in material and workmanship for a period of five years from the date of purchase. Logitech also warrants that the software accompanying this documentation will perform substantially in accordance with the documentation for a period of 90 days from the date of purchase. Logitech's hardware and software warranty is nontransferable and is limited to the original purchaser. **Product Remedies.** Logitech's entire liability and the Licensee's exclusive remedy for any breach of warranty, shall be, at Logitech's option, either (a) return of the price paid or (b) repair or replacement of the hardware or software, provided that the hardware or software is returned to the point of purchase, with a copy of the sales receipt. Any replacement hardware or software will be warranted for the remainder of the original warranty period or 30 days for the hardware and 30 days for the software, whichever is longer. These remedies are void if failure of the hardware or software has resulted from accident, abuse, or misapplication.

LIMITATION OF LIABILITY. THE WARRANTIES SET FORTH IN THIS AGREEMENT REPLACE ALL OTHER WARRANTIES. LOGITECH EXPRESSLY DISCLAIMS ALL OTHER WARRANTIES, INCLUDING, BUT NOT LIMITED TO, THE IMPLIED WARRANTIES OF MERCHANTABILITY AND FITNESS FOR A PARTICULAR PURPOSE AND NON-INFRINGEMENT OF THIRD-PARTY RIGHTS WITH RESPECT TO THE DOCUMENTATION, SOFTWARE, AND HARDWARE. NO LOGITECH DEALER, AGENT, OR EMPLOYEE IS AUTHORIZED TO MAKE ANY MODIFICATION, EXTENSION, OR ADDITION TO THIS WARRANTY. IN NO EVENT WILL LOGITECH OR ITS SUPPLIERS BE LIABLE FOR ANY COSTS OF PROCUREMENT OF SUBSTITUTE PRODUCTS OR SERVICES, LOST PROFITS, LOSS OF INFORMATION OR DATA, OR ANY OTHER SPECIAL, INDIRECT, CONSEQUENTIAL, OR INCIDENTAL DAMAGES ARISING IN ANY WAY OUT OF THE SALE OF, USE OF, OR INABILITY TO USE ANY LOGITECH PRODUCT OR SERVICE, EVEN IF LOGITECH HAS BEEN ADVISED OF THE POSSIBILITY OF SUCH DAMAGES. IN NO CASE SHALL LOGITECH'S LIABILITY EXCEED THE ACTUAL MONEY PAID FOR THE PRODUCTS AT ISSUE. Because some jurisdictions do not allow the limitation of implied warranties or liability for incidental, consequential, special, or indirect damages, the above limitation may not always apply. The above limitations will not apply in case of personal injury where and to the extent that applicable law requires such liability.

U.S. Government Restricted Rights. The Software is provided to the U.S. Government only with restricted rights and limited rights. Use, duplication, or disclosure by the U.S. Government is subject to restrictions set forth in 48 C.F.R. 2.101 (October 1995), consisting of "Commercial Computer Software" and "Commercial Computer Software Documentation" as such terms are used in 48 C.F.R. 12.212 (September 1995), and in FAR Sections 52-227-14 and 52-227-19 or DFARS Section 52.227-7013 (C) (1) (ii), or their successors, as applicable. Consistent with 48 C.F.R. 12.212 and 48 C.F.R. 227.7202-1 through 227.7204-4 (June 1995), or any successor regulations, this Software is provided to U.S. Government users pursuant to the terms and conditions herein. Contractor/Manufacturer is Logitech Inc., 6505 Kaiser Drive, Fremont, CA 94555.

FCC Compliance and Advisory Statement. This hardware device complies with Part 15 of the FCC Rules. Operation is subject to the following two conditions: 1) this device may not cause harmful interference, and 2) this device must accept any interference received, including interference that may cause undesired operation. This equipment has been tested and found to comply with the limits for a Class B digital device, pursuant to Part 15 of the FCC Rules. These limits are designed to provide reasonable protection against harmful interference in a residential installation. This equipment generates, uses, and can radiate radio frequency energy and, if not installed or used in accordance with the instructions, may cause harmful interference to radio communications. However, there is no guarantee that interference will not occur in a particular installation. If this equipment does cause harmful interference to radio or television reception, which can be determined by turning the equipment off and on, the user is encouraged to try to correct the interference by one or more of the following measures: 1) reorient or relocate the receiving antenna; 2) increase the separation between the equipment and the receiver; 3) connect the equipment to an outlet on a circuit different from that to which the receiver is connected; 4) consult the dealer or an experienced radio/TV technician for help. Any changes or modifications not expressly approved by the party responsible for compliance could void the user's authority to operate the equipment. Where shielded interface cables have been provided with the product or specified additional components or accessories elsewhere defined to be used with the installation of the product, they must be used in order to ensure compliance with FCC regulations.

Canadian DOC Statement. This digital device does not exceed the Class B limits for radio noise emissions from digital apparatus specified in the interference-causing equipment standard entitled "Digital Apparatus," ICES-003 of the Department of Communications.

Cet appareil numérique respecte les limites bruits radioélectriques applicables aux appareils numériques de Classe B prescrites dans la norme sur le matériel brouilleur: "Appareils Numériques," NMB-003 édictée par le Ministère des Communications.

This device complies with RSS-210 of Industry and Science Canada. Operation is subject to the following two conditions: 1) this device may not cause interference, and 2) this device must accept any interference, including interference that may cause undesired operation of the device.

Transmitter frequency: 26.995; 27.045; 27.145; 27.195 MHz. **Power Output:** < 10mW/m @ 3m.

Important Ergonomic Information

Some research suggests that long periods of repetitive motion using an improperly setup workspace, incorrect body position, and poor work habits may be associated with physical discomfort and injury to nerves, tendons, and muscles.

If you feel pain, numbness, tingling, weakness, swelling, burning, cramping, or stiffness in your hands, wrists, arms, shoulders, neck, or back while using a keyboard, mouse, or trackball, see a qualified health professional.

TO REDUCE THE RISK OF INJURY, FOLLOW THESE PRECAUTIONS:

- Take frequent short breaks. Get up and walk around several times every hour.
- Vary your tasks throughout the day. Do something different with your hands and arms from time to time.
- Use a light touch on the keyboard and for better control of the mouse or trackball.
- Keep your shoulders relaxed with your elbows at your side. Position your keyboard and mouse so you do not have to reach to use them.
- Adjust your chair and keyboard so your upper arms and wrists are straight.
- Avoid resting your wrists on sharp edges.
- Use the software features of your keyboard, mouse, or trackball to help reduce stress to your arms, wrists, or hands by minimizing repetitive or awkward motions.

For additional information that may reduce your risk of injury, read the *Comfort Guidelines* that comes with your product, or read these same guidelines on Logitech's Internet site: www.logitech.com.

Using the Cordless Keyboard and iTouch™ Software

Your Logitech cordless keyboard, with the included iTouch™ software, brings you closer and keep you in better touch with your desktop world. Browsing the web, sending e-mail, launching applications, and playing CDs or DVDs are more intuitive, easy to use, efficient, fun, and natural with your cordless keyboard and iTouch software.

Set up and organize your keyboard your way. Using the iTouch keys and the iTouch software, customize your keyboard so you can be at your Internet home page, or favorite chat room, and run your e-mail application with the push of a button. The iTouch keys are divided into three groups, as defined by their functions.

Using the Internet Keys

There are five programmable Internet keys, which you must set up before using. (Refer to the *Quick Start Guide* for their location on the keyboard, and for the location of the other iTouch keys.) You can customize the Internet keys to suit your specific needs. For example, you can set up the Internet keys so



- The My Home key accesses your home web page or favorite Internet address



- The E-mail key launches an e-mail application



- The Search key displays a menu of Internet search engines



- The Go key starts an application, accesses a web site, or displays a menu of applications and web sites

- The Logitech key starts an application, accesses a web site, or displays a menu of applications and web sites, like the Go key example above

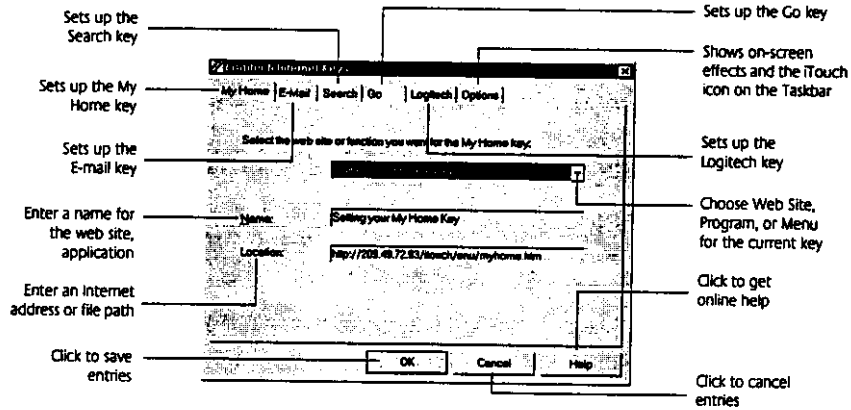
The Internet keys have built-in flexibility. If you find it more convenient, for example, to program the Search key to access a favorite web site instead of displaying a menu of Internet search engines, the iTouch software makes it very easy for you to do so.

Launching the iTouch™ Software

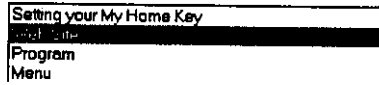
To launch the iTouch™ software, double-click the iTouch icon on the Windows® Taskbar.

Setting Up the Internet Keys

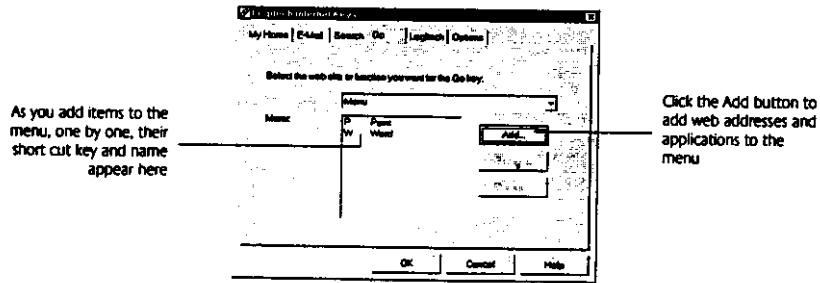
1. **Connect to the Internet so you can easily assign Internet addresses to the iTouch™ Internet keys, if desired.**
2. **Launch the iTouch software.** The Logitech® Internet Keys dialog box displays.



3. **Choose an Internet key to set up by clicking a "tab," such as the My Home tab or the Go tab.**
4. **Choose "Web Site," "Program," or "Menu" for the key you are customizing.** Click the down arrow to display these choices, then highlight your choice by clicking it.



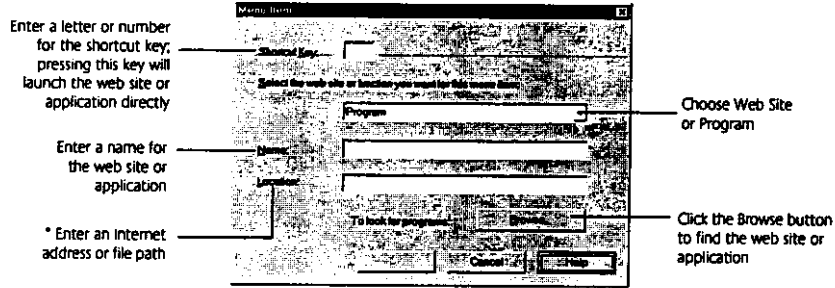
- **Web Site** links a web site to the key.
- **Program** links an application to the key.
- **Menu** links a menu of web addresses, Internet search engines, and/or applications to the key, which you will need to specify. The Internet Keys dialog box has a different layout when Menu is chosen.





5. Enter information about the web site, program, or menu.

- **Web Site.** You can use the Browse button under the Location box of the Logitech Internet Keys dialog box to open your web browser (if it is not already running) and to navigate to the desired site. Enter a name for the web site in the Name box, then enter the web address in the Location box.
- **Program.** Use the Browse button under the Location box to find the application. Enter a name for the application in the Name box, then enter a file path in the Location box.
- **Menu.** Click the Add button to display the Menu Item dialog box. Enter information in this dialog box, as indicated below.



When specifying an Internet address, you can navigate to the desired web site, and once there, press CTRL and the iTouch key you are setting up (e.g., the Go key) to have the Internet address entered automatically in the Location box.

6. **Click the OK button to save your changes.** To modify your entries or to make changes to your iTouch keys at a later time, refer to Steps 1- 5.

Assigning a Web Site to an Internet Key Quickly

You can easily assign a web site to an iTouch™ key while surfing the Net.

1. **While logged on to the Internet, navigate to the web site to which you want to assign an iTouch key.**
2. **After you have reached the desired web site, press CTRL and the iTouch key you are assigning.** For example, if you are assigning the My Home key, press CTRL and the My Home key simultaneously.

Using the Multimedia Keys



Play CD music and DVD music and movies (sound board or AV board required) with the Multimedia keys.

- Play/Pause.** Plays the CD/DVD; pauses play.
- Stop.** Stops play.
- Previous Track.** Plays the previous track.
- Next Track.** Plays the next track.
- Mute.** Mutes sound volume by a specified amount.
- Volume Up.** Increases sound volume.
- Volume Down.** Decreases sound volume.



Using Your Cordless Wheel Mouse

The iTouch™ software provides visual feedback on your screen for each of these operations.

Using the Suspend Key



Access the Windows® Shut Down dialog box, where you can put your system on stand-by or shut down Windows.

Getting Additional Information about the iTouch™ Keys

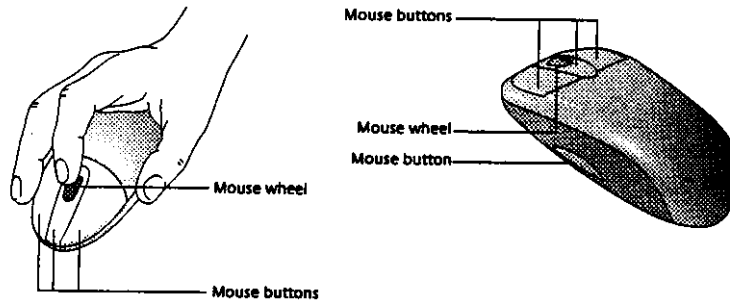
A quick way to get information about an Internet key is to use the Logitech® iTouch™ web site.

1. Connect to the Internet to access the Logitech iTouch web site.
2. Press the key you want information about, then click "Yes" in the dialog box that displays.
3. Read the help page that appears.

You can also obtain information about the iTouch software by clicking a help key while using the iTouch software, or by double-clicking the help folder in the Logitech iTouch program group. To access the Logitech iTouch program group from the Windows® Taskbar, choose Start, Programs, Logitech iTouch, then help.

Using Your Cordless Wheel Mouse

Your cordless mouse has a wheel that functions both as a wheel and as a button. To scroll, simply move the wheel. To use the wheel like a standard mouse button, click (press down) the wheel.



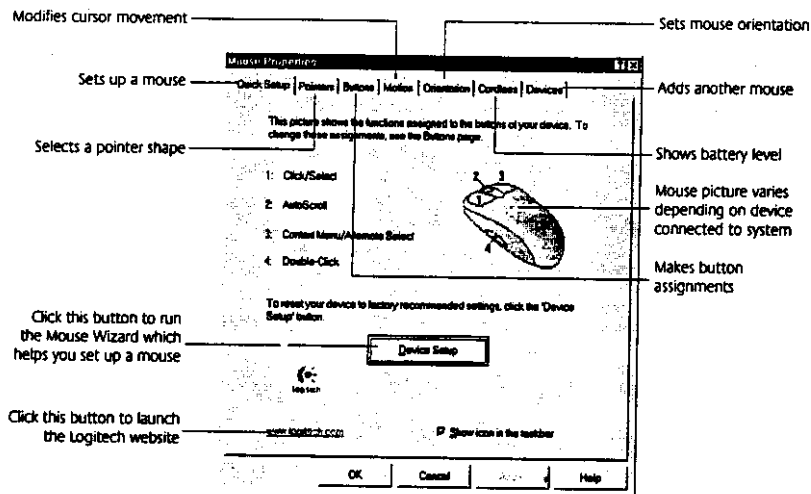
Scrolling with the Cordless Wheel Mouse in Windows® 95/Windows® 98/Windows NT® 4.0

With the cordless wheel mouse, you can scroll both vertically and horizontally and you can zoom. Read this table to find out more about scrolling and zooming with your cordless wheel mouse.

Task	What is It?	How to Do It?
Wheel Scroll	Use Wheel Scroll for precise up and down movement.	To scroll up, move the wheel forward; to scroll down, move the wheel back.
Horizontal Scroll	Use Horizontal Scroll in Windows® 95, Windows® 98, and Windows NT® 4.0 to scroll left to right, or right to left, whenever horizontal scroll bars are present in the active window.	When both vertical and horizontally scroll bars are present in a window, press the Ctrl and Shift keys on your keyboard, then move the mouse wheel forward to scroll left; move the mouse wheel backward to scroll right. If no vertical scroll bars are present, simply move the mouse wheel to scroll horizontally.
Zoom	Use Zoom to either magnify or demagnify the view of a document in an application that supports it.	Place the cursor in an application that is Microsoft Office 97 compliant. Press and hold the Ctrl key on the keyboard, then to zoom in, move the wheel forward; to zoom out, move the wheel backwards.

Using the MouseWare® Software in Windows® 95/Windows® 98/Windows NT® 4.0

Your cordless wheel mouse comes with the MouseWare® software, which includes features for making button assignments, controlling cursor movement, and setting up the mouse. **To access the MouseWare software, double-click the mouse icon on the Windows® Taskbar, or start MouseWare from the Control Panel.** The Mouse Properties tabs display, as shown below. Choose from the available options to set up the mouse.



Choosing Options for the Cordless Wheel Mouse

Need help choosing options? Let the Mouse Wizard show you how. To begin, go to the Mouse Properties. To do this, double-click the mouse icon in the Windows Taskbar. Now choose the Quick Setup tab. Click Device Setup, then follow the on-screen instructions.



Finding Out What Is Assigned to the Mouse Buttons

By default, the mouse buttons are assigned various useful functions, such as Click/Select, AutoScroll, Context Menu/Alternate Select, Double-Click, etc. Using the Buttons tab of the Mouse Properties, you can change the button settings of your mouse and configure the mouse wheel. (Refer to the figure to the right.)

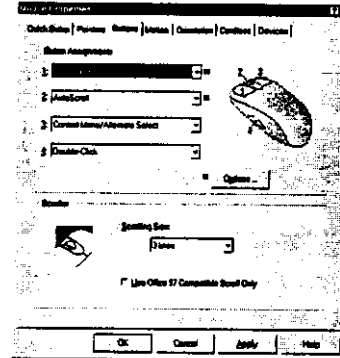
Note The setting Context Menu/Alternate Select provides easy-to-use short-cuts to speed up common tasks, such as cut and paste.

To change button assignments, click the down arrow to select a function for a button. (Note that at least one button must be assigned to Click/Select.)

Click the down arrow under Scrolling Size: to choose the amount of scrolling. **This sets the amount of scrolling in relation to how much you move the scroll wheel.**

Click the Options button to specify settings for AutoScroll, CyberJump, HyperJump and double-click timing.

For more information, click the Help button.



Using the Cordless Tab

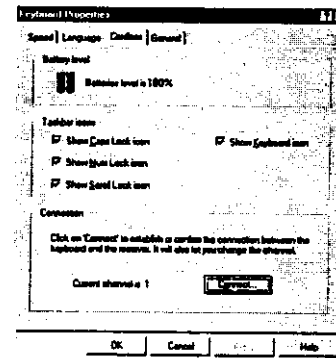
Access the Windows Keyboard Properties tabs by selecting Start on the Windows Taskbar, followed by Settings, Control Panel, then Keyboard. To display the page shown, click the Cordless tab.

The Cordless tab shows battery level for the keyboard (alkalines only), and allows you to display icons on the Windows Taskbar for the keyboard and for Caps Lock, Num Lock, and Scroll Lock.

By clicking the Connect button, you can use the software to help you establish communication between the keyboard and the receiver.

Battery Warning – Important!

When battery power is low for the mouse or keyboard, the MouseWare software displays a dialog box in Windows 95, Windows 98, and Windows NT 4.0 suggesting that you change the batteries. A light on the receiver will also blink, which is the *only* warning you will receive if you are using Windows 3.1 or DOS. It is recommended that when you change batteries you change them for the mouse and keyboard at the same time to optimize performance. When replacing the batteries, use alkalines. You may use other battery types, but do not mix them with alkalines. Note that the battery level indicator in the Cordless tab of the Keyboard Properties or the Mouse Properties is calibrated for alkaline batteries only, and will not give an accurate indication of battery life for batteries other than alkalines.



Discard all used batteries according to the battery manufacturer's instructions. Exercise care when handling batteries. When batteries are misused, they may explode or leak, causing burns and personal injury. Do not open a battery or mutilate, dispose of in a fire, expose to heat above 212° F (100° C), immerse in water, install improperly, or recharge. Conducting materials, such as rings, bracelets, and keys, can short out a battery causing it to overheat and possibly leak or explode. When you are not using your cordless device for long periods of time, remove the batteries and store them in a dry place at normal room temperature.

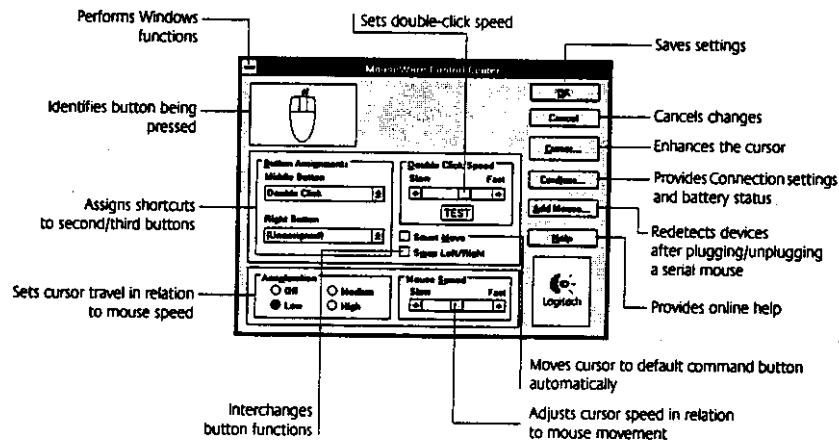
Using the Cordless Desktop Icons on the Windows® Taskbar

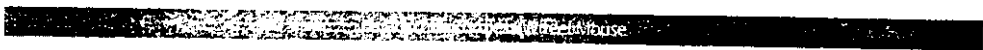
Various Cordless Desktop icons appear on the Windows® Taskbar. These icons provide valuable information about the Cordless desktop, and make it possible for you to display keyboard and mouse property sheets easily and quickly. Clicking either the keyboard or mouse icon launches its respective property sheet in which you can specify options. Standard keyboard functions are also conveniently displayed on the Taskbar, which give the status of Num Lock, Caps Lock, and Scroll Lock. When mouse or keyboard battery power is low, a warning icon appears to let you know that it is time to change the batteries. Whenever you change the batteries, it is a good idea to change the batteries in both the keyboard and mouse at the same time for best performance.

Using the Cordless Wheel Mouse in Windows® 3.1x

Double-click the MouseWare® icon located in the Logitech® MouseWare group window (or in the Windows Control Panel). Choose from the available options to configure the wheel mouse. **Note that Scroll and Zoom, as well as CyberJump and HyperJump functions, are not supported in Windows 3.1x.**

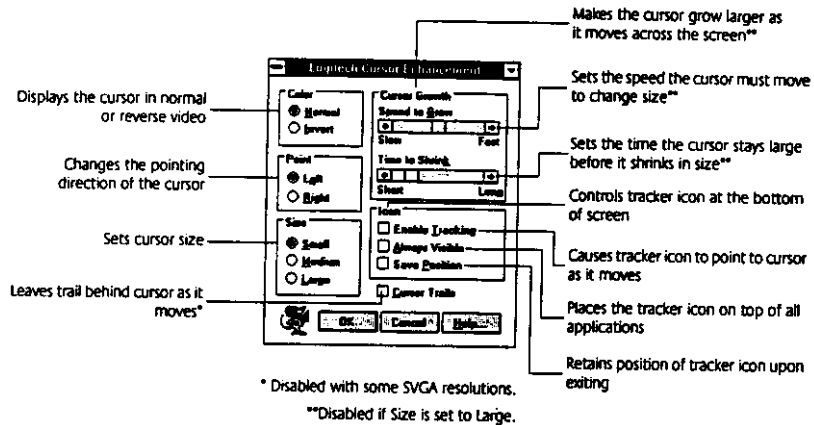
The MouseWare® Control Center in Windows® 3.1x





Cursor Enhancement in Windows® 3.1x

Use the Cursor Enhancement dialog box to customize the cursor. To display the dialog box, click the Cursor button in the Mouse Control Center.



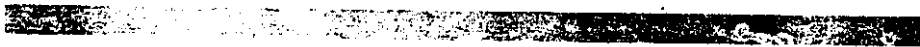
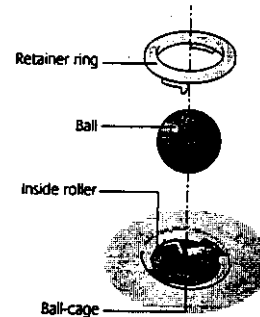
Button Assignments in Windows® 3.1x

MouseWare allows you to assign functions to three mouse buttons and replaces frequently used tasks, such as Double-Click, DragLock, etc., to a single button click. To override a button assignment temporarily so you can use an application-specific feature, press the Control key while clicking the button to be overridden.

Maintaining the Cordless Wheel Mouse

If the cursor skips or moves abnormally, clean the ball of your mouse.

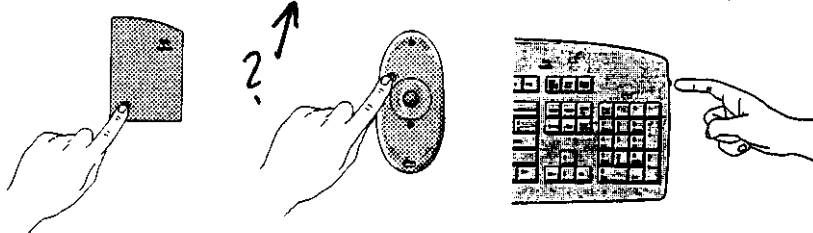
- 1. Remove the retainer ring to remove the ball. On the bottom of the mouse, press in the direction of the Open arrow imprinted on the retainer-ring cover.**
- 2. Wipe the ball with a clean, lint-free cloth, then blow carefully into the ball-cage to dislodge dust and lint.** Look for a build-up of dirt on the rubber roller(s) inside the ball-cage.
- 3. If dirty, clean the roller(s) using a cotton swab moistened lightly with isopropyl (rubbing) alcohol.** After cleaning, make sure the roller(s) are still centered in their channels. Make sure that fluff from the swab is not left on the roller(s).
- 4. Replace the ball and retainer ring.**



Troubleshooting the Cordless Keyboard and Mouse

The Cordless Mouse or Keyboard Does Not Work after Installation

- Make sure you have connected the receiver correctly. The receiver cable goes into the computer's PS/2 mouse port or serial port. **For optimal performance, place the receiver at least 8 inches or 20 centimeters away from other electrical devices, such as the computer, the computer monitor, or external storage drives.**
- Make sure you have installed the batteries correctly.
- Establish communication between the receiver and the mouse and keyboard. Press the Connect button on the receiver, then press the Channel t button under the mouse and on the right side of the keyboard.



- If you are working on a metallic surface, try using a mouse pad and turning the receiver on its side for better reception.

The Cordless Mouse or Keyboard Is Not Detected

- Make sure the receiver cable is plugged into the PS/2 mouse port or serial port. **Do not plug or unplug the receiver cable while the computer is running.**
- Make sure the PS/2 mouse port or serial port has the proper configuration. Refer to your computer documentation for the correct port configuration.
- You may have other system devices that conflict with the mouse and keyboard. Check the IRQ/address settings of these devices for conflicts, and change the settings as required. Refer to your computer documentation to make these changes.

The Cordless Mouse or Keyboard Does Not Work after Changing the Batteries

Check to make sure the batteries you have installed are not dead. Try the batteries in another device. You may also need to re-establish the connection between the mouse/keyboard and its receiver. To do this, press the Connect button on the receiver, then press the Channel button on the bottom of the mouse or on the side of the right side of the keyboard.

The Screen Cursor Does Not Move Properly on the Screen

Clean the mouse ball and roller(s). Try changing the position of the receiver. It is possible that the receiver may be too far from the mouse. Or the computer monitor (or a large metal object) may be interfering with the receiver's radio reception. Also, the mouse batteries may be nearly dead. Check the mouse batteries as described above. You may also need to re-establish the connection between the mouse and its receiver. To do this, press the Connect button on the receiver, then press the Channel button on the bottom of the mouse.

Logitech Addresses and Phone Numbers*

Benelux (B, LUX, NL) LOGITECH Benelux	Bedrijvenpark Lindenholt Kerkenbos 1045 NL - 6546 88 <u>Nirneegen</u>	☎ +31 (0)10 243 88 97 ☎ +32 (0)2 626 89 63 ☎ +32 (0)2 626 89 61	<i>Nederlands</i> <i>Francais (Belg.)</i> <i>Vlaams (Belg.)</i>	☎ +31 (0)10 243 88 98 ☎ +32 (0)2 626 89 62 ☎ +32 (0)2 626 89 60	<i>Nederlands</i> <i>Francais (Belg.)</i> <i>Vlaams (Belg.)</i>
Denmark LOGITECH Representation	Mesteriodden 16 DK - 2620 <u>Centofoe</u>	☎ +45-35 44 55 16		☎ +45-35 44 55 17	
Deutschland & Eastern European countries LOGITECH GmbH	Gabriele-Münter-Strasse 3 D - 82110 <u>Gemering</u>	☎ +49 (0)69-92 032 165		☎ +49 (0)69-92 032 166	
España LOGITECH S.A.	Oficina de representación en España Calle Nicaragua, 48 2º 1ª E - 08029 <u>Barcelona</u>	☎ +34 91-375 33 68		☎ +34 91-375 33 69	
France LOGITECH France S.A.R.L.	26-28 Rue Danielle Casanova F - 75002 <u>Paris</u>	☎ +33 (0)1-43 62 34 13		☎ +33 (0)1-43 62 34 14	
Hungary Logitech Sales Office in Hungary	Rubin Business Center/308 Dayka Gabór utca 3 H - 1118 <u>Budapest</u>	☎ +41 (0)21 863 54 00	<i>English</i>	☎ +41 (0)21 863 54 01	<i>English</i>
Italia LOGITECH Italia S.r.l.	Centro Direzionale Colleoni Palazzo Andromeda 3 I - 20041 <u>Asiate Brianza, MI</u>	☎ +39-02 215 1062		☎ +39-02 214 0871	
Österreich LOGITECH Repräsentanz	Córa 580, Postfach 77 A - 5580 <u>Tarnawa</u>	☎ +43 (0)1 502 221 349		☎ +43 (0)1 502 221 348	
Schweiz/Suisse/Svizzera LOGITECH Switzerland	Täferstrasse 16 CH - 5405 <u>Baden-Dättwil</u>	☎ D +41 (0)21 863 54 10 ☎ F +41 (0)21 863 54 30 ☎ I +41 (0)21 863 54 60		☎ D +41 (0)21 863 54 11 ☎ F +41 (0)21 863 54 31 ☎ I +41 (0)21 863 54 61	
Sweden, Iceland, Norway & Finland Logitech Representation	Geometrvägen 3-7 S - 141 75 <u>Kundens Kurva</u>	☎ +46 (0)8-519 920 19 ☎ +47 (0)23 500 084 ☎ +358 (0)9 817 100 21	<i>Sweden</i> <i>Norway</i> <i>Finland</i>	☎ +46 (0)8-519 920 20 ☎ +47 (0)23 500 083 ☎ +358 (0)9 817 100 21	<i>Sweden</i> <i>Norway</i> <i>Finland</i>
UK + Eire LOGI (U.K.) Ltd.	The Old Court House 267-273 High Street GB - <u>Dorking</u> , RH4 1RL, Surrey	☎ +44 (0)181 308 6582		☎ +44 (0)181 308 6581	

Logitech Headquarters

European, Middle Eastern & African Headquarters LOGITECH Trading S.A.	Moulin-du-Choc CH - 1122 <u>Romanel-sur-Morges</u>	☎ +41 (0)21 863 54 00 Fax +41 (0)21 863 54 02	<i>English</i>	☎ +41 (0)21 863 54 01 Fax +41 (0)21 863 54 02	<i>English</i>
Corporate Headquarters LOGITECH Inc.	6505 Kaiser Drive USA - <u>Fremont</u> , CA 94555	☎ (800) 231-7717		☎ +1 702 269 3457	
Asian Pacific Headquarters LOGITECH Far East Ltd.	#2 Creabon Road IV Science-Based - Industrial Park ROC - <u>Hsinchu</u> , Taiwan			☎ +886 (2) 7466601 x2206	
Australia Logitech Australia Computer Peripherals Pty Ltd.	Level 2, 633 Pittwater Road AUS - <u>Dee Why</u> NSW 2099, Australia			☎ +61 (0)2)9804 6968 ☎ +61 (0)2)9972 3561	
Canada Sales & Marketing Office	5025 Orbitor Dr., Bldg. 6, Suite 200 CAN - <u>Mississauga</u> , ON L4W 4Y5	☎ (800) 231-7717		☎ +1 702 269 3457	
Japan LOGICOOL Co. Ltd.	Ryoshin Ginza East Mirror Bldg., 7F 3-15-10 Ginza <u>Chuo-ku, Tokyo</u> , Japan 104-0061			☎ +81 (3) 3543 2122 Fax +81 (3) 3543 2911	
In Latin America and the Caribbean: Contact your local authorized distributor, or call our Customer Support Hotline in the USA, at ☎ +1 702 269 3457.					
World Wide Web: http://www.logitech.com FTP: ftp://ftp.logitech.com/pub					

* Refer to your Registration Card for the most up-to-date addresses and phone numbers. *

Note For USA and Canadian customers only: please read the following prior to exchanging or returning your product. To exchange or return your product within the first 30 days, we recommend returning it to the point of purchase. If you return or exchange your product through Logitech, you must first contact Customer Support to obtain a Return Merchandise Authorization (RMA) number. Customer Support will give you an RMA number and a special address for the exchange.