



User's Manual



Logitech **io**[™] 2
Digital Pen with **Bluetooth**

623495-0100.B0

Limited Warranty. Logitech warrants that any hardware product accompanying this documentation shall be free from significant defects in material and workmanship for a period of two (2) years from the date of purchase. Logitech's limited warranty is nontransferable and is limited to the original purchaser. This warranty gives you specific legal rights, and you may also have other rights which vary under local laws.

Remedies. Logitech's entire liability and your exclusive remedy for any breach of warranty shall be, at Logitech's option, to: (a) repair or replace the hardware, or (b) refund the price paid, provided that the hardware is returned to the point of purchase or such other place as Logitech may direct, with a copy of the sales receipt. Any replacement hardware will be warranted for the remainder of the original warranty period or thirty (30) days, whichever is longer. These remedies are void if failure of the hardware has resulted from accident, abuse, misapplication, or any unauthorized repair, modification or disassembly. Further, for cordless devices, these remedies are void if you use battery types other than those recommended by Logitech. Upon request from Logitech, you must prove the date of the original purchase of the hardware by a dated bill of sale or dated itemized receipt. **DISCLAIMER OF WARRANTY.** THE WARRANTIES EXPRESSLY SET FORTH IN THIS AGREEMENT REPLACE ALL OTHER WARRANTIES. LOGITECH AND ITS SUPPLIERS EXPRESSLY DISCLAIM ALL OTHER WARRANTIES, INCLUDING, BUT NOT LIMITED TO, THE IMPLIED WARRANTIES OF MERCHANTABILITY AND FITNESS FOR A PARTICULAR PURPOSE AND NONINFRINGEMENT OF THIRD-PARTY RIGHTS WITH RESPECT TO THE HARDWARE, SOFTWARE, DOCUMENTATION AND ANY OTHER MATERIALS PROVIDED BY LOGITECH AND/OR ITS SUPPLIERS, AND ANY WARRANTIES OF NON-INTERFERENCE OR ACCURACY OF INFORMATIONAL CONTENT. NO LOGITECH DEALER, AGENT, OR EMPLOYEE IS AUTHORIZED TO MAKE ANY MODIFICATION, EXTENSION, OR ADDITION TO THIS WARRANTY. Some jurisdictions do not allow limitations on how long an implied warranty lasts, so the above limitation may not apply to you. **LIMITATION OF LIABILITY.** IN NO EVENT WILL LOGITECH OR ITS SUPPLIERS BE LIABLE FOR ANY COSTS OF PROCUREMENT OF SUBSTITUTE PRODUCTS OR SERVICES, LOST PROFITS, LOSS OF INFORMATION OR DATA, OR ANY OTHER SPECIAL, INDIRECT, CONSEQUENTIAL, OR INCIDENTAL DAMAGES ARISING IN ANY WAY OUT OF THE SALE OF, USE OF, OR INABILITY TO USE ANY LOGITECH PRODUCT OR SERVICE, EVEN IF LOGITECH HAS BEEN ADVISED OF THE POSSIBILITY OF SUCH DAMAGES. IN NO CASE SHALL LOGITECH'S AND ITS SUPPLIERS' TOTAL LIABILITY EXCEED THE ACTUAL MONEY PAID FOR THE LOGITECH PRODUCT OR SERVICE GIVING RISE TO THE LIABILITY. Some jurisdictions do not allow the exclusion or limitation of incidental or consequential damages, so the above limitation or exclusion may not apply to you. The above limitations will not apply in case of personal injury where and to the extent that applicable law requires such liability.

How to Obtain Warranty Support. Before submitting a warranty claim, we recommend you visit the support section at www.logitech.com for technical assistance. Valid warranty claims are generally processed through the point of purchase during the first two years of the warranty period; however, this period may vary in different countries, such as in the U.K., where valid warranty claims are processed through the point of purchase during the first year only. Valid warranty claims that are not processed through the point of purchase, and any other warranty related questions, should be addressed directly to Logitech. The addresses and customer service telephone numbers for Logitech can be found in the documentation accompanying your product and on the web at www.logitech.com.

FCC Compliance and Advisory Statement. This hardware device complies with Part 15 of the FCC Rules. Operation is subject to the following two conditions: 1) this device may not cause harmful interference, and 2) this device must accept any interference received, including interference that may cause undesired operation. This equipment has been tested and found to comply with the limits for a Class B digital device, pursuant to Part 15 of the FCC Rules. These limits are designed to provide reasonable protection against harmful interference in a residential installation. This equipment generates, uses, and can radiate radio frequency energy and, if not installed or used in accordance with the instructions, may cause harmful interference to radio communications. However, there is no guarantee that interference will not occur in a particular installation. If this equipment does cause harmful interference to radio or television reception, which can be determined by turning the equipment off and on, the user is encouraged to try to correct the interference by one or more of the following measures: 1) reorient or relocate the receiving antenna; 2) increase the separation between the equipment and the receiver; 3) connect the equipment to an outlet on a circuit different from that to which the receiver is connected; 4) consult the dealer or an experienced radio/TV technician for help. Any changes or modifications not expressly approved by the party responsible for compliance could void the user's authority to operate the equipment. Where shielded interface cables have been provided with the product or specified additional components or accessories elsewhere defined to be used with the installation of the product, they must be used in order to ensure compliance with FCC regulations.

Canadian DOC Statement. This digital device does not exceed the Class B limits for radio noise emissions from digital apparatus specified in the interference-causing equipment standard entitled "Digital Apparatus" ICES-003 of the Department of Communications. This device complies with RSS-210 of Industry and Science Canada. Operation is subject to the following two conditions: 1) this device may not cause interference, and 2) this device must accept any interference, including interference that may cause undesired operation of the device.

Table of Contents

Welcome!	1
Features	1
Connecting and Charging the Digital Pen	2
Opening and Closing the USB Cradle	3
Turning the Digital Pen On/OFF	4
Placing the Digital Pen in Bluetooth® Discoverable Mode	4
Recharging the Digital Pen	4
Replacing the Ink Cartridge	5
Customizing Digital Pen Settings	6
Bluetooth® Compatibility and Functionality	6
Getting More Information	9
Troubleshooting	9
Battery Information	10
Important Ergonomic Information	10
International Standards and Safety	10
Country Safety Approvals Emissions and Immunity EMC	11

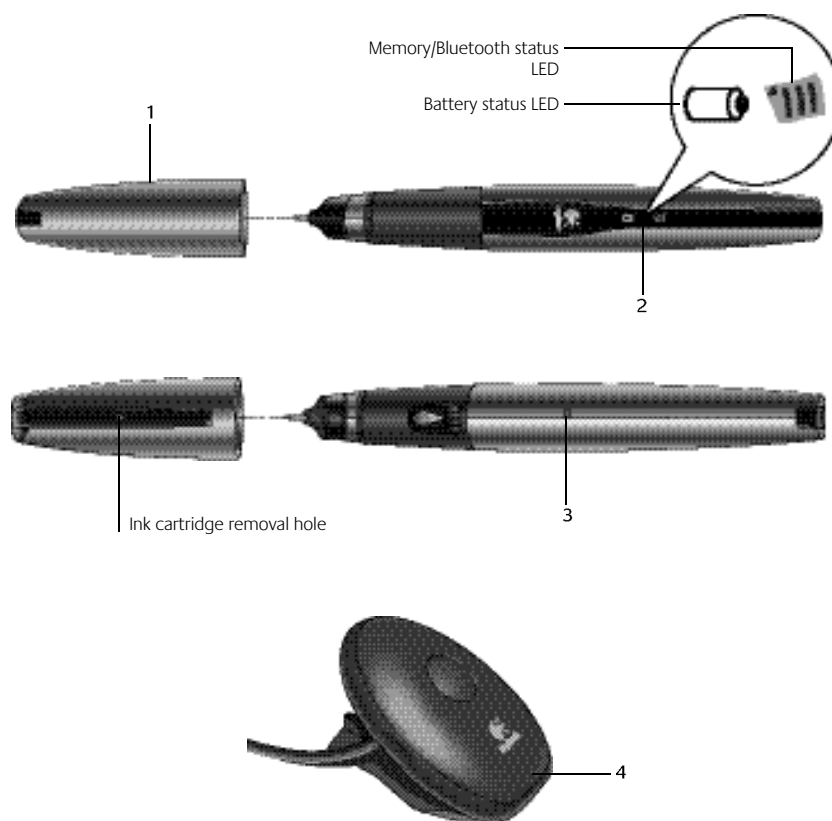
Welcome!

Congratulations on your purchase of the Logitech® io™₂ Digital Pen with Bluetooth® wireless technology.

This manual provides valuable information about your digital pen, its features and functionality, as well as information about how to obtain additional support from Logitech.

After you have become familiar with the Logitech's digital pen with Bluetooth, be sure to visit www.logitechio.com to learn more about what other customers have done to maximize the benefits of this unique data capture device.

Features



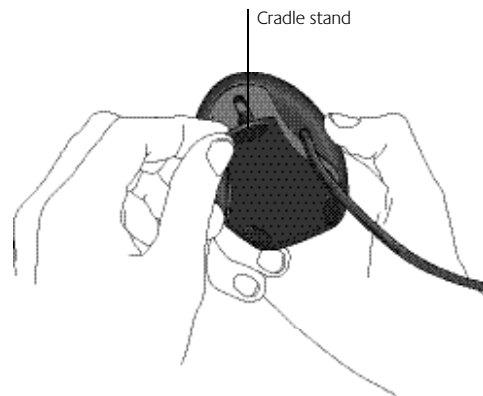
- 1. Pen Cap.** Acts as the on/off switch for the digital pen. The hole in the clip also serves as the ink cartridge remover.
- 2. Battery and Memory/Bluetooth Status LEDs.** Provides battery and memory level, as well as Bluetooth® connectivity status information.
- 3. Reset Button.** Resets the digital pen. (See Troubleshooting for more information.)
- 4. USB Cradle.** Charges the digital pen.

Connecting and Charging the Digital Pen

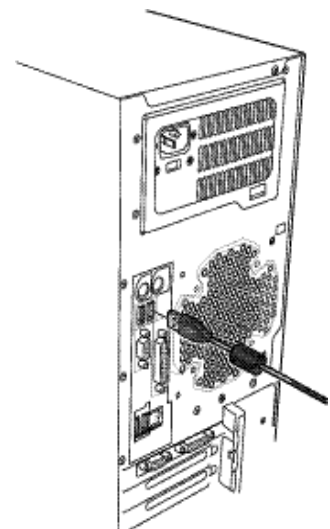
You **must** charge the digital pen before using it. Battery charging takes up to two hours.

Note In order for the digital pen to charge, the USB cradle must be plugged into a USB port on your computer and your computer must be running. The digital pen draws the power it needs from the computer through the USB port. Additionally, the digital pen can be charged using a wall or car charging adapter, which connects to the USB cradle. (For more information, see Recharging the Digital Pen.)

1. Turn on your computer.
2. Open the USB cradle by pulling the top of the cradle stand away from its bottom.



3. Place the USB cradle on a flat surface.
4. Connect the cradle's USB connector to the computer's USB port.
5. Remove the pen cap. The Battery and Memory/Bluetooth Status LEDs flash red, yellow, and then green. The digital pen will vibrate once to indicate it is on. The Memory/Bluetooth Status LED will flash blue to indicate the pen is in Bluetooth discoverable mode. The discoverable mode (with cap off) lasts for two minutes.
6. Insert the digital pen into the USB cradle. The Microsoft® Windows® operating system will detect the new hardware and a dialog box will launch asking if you would like to load the appropriate drivers.



Note If you are charging the digital pen only, you do not need to load the digital pen drivers, and you should exit the Microsoft Windows dialog box.

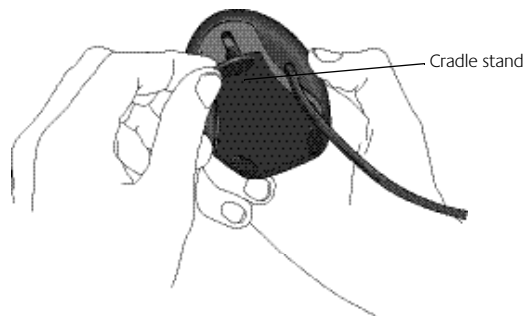
If you wish to configure pen settings, such as power management, Bluetooth passkey, and ISP settings, you must first install the Bluetooth Digital Pen Configuration Utility. This utility is part of the Logitech io: Digital Pen with Bluetooth Business Kit, which can be downloaded from the io for Business Solutions area of the Logitech.com website. See Customizing Digital Pen Settings for more details.

7. Charge the digital pen. While the digital pen is charging, the Battery Status LED will slowly flash either red, yellow, or green depending upon the power level of the battery. It will turn solid green when the digital pen is done charging. After the digital pen has been fully charged, remove it from the USB cradle, or disconnect the USB cord. Charging the digital pen continuously may “age” the battery unnecessarily.

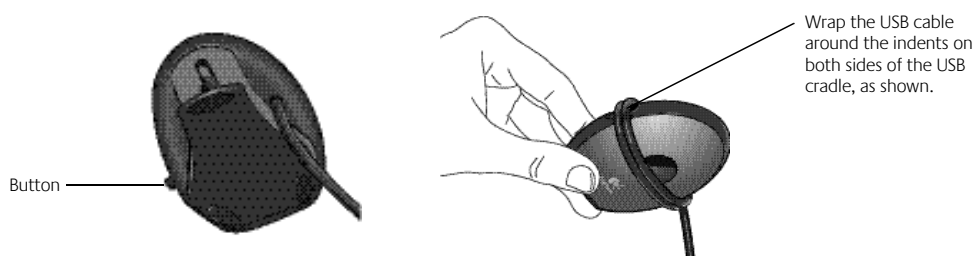
Caution You should only charge the battery in temperatures between 41F° – 104°F (5C° – 40°C). Never place the digital pen in temperatures that exceed 140°F (60°C).

Opening and Closing the USB Cradle

1. Open the USB cradle by pulling the top of the cradle stand away from its bottom.



2. To close the cradle stand, push the button on the side of the cradle. The cradle stand retracts automatically.



3. When the cradle is not in use, you can wrap its USB cable around the cradle body as shown in the picture.



Turning the Digital Pen On/OFF

You can switch ON the pen by

- Removing the cap from the pen
- Docking the pen in its USB cradle when the cradle is attached to a powered USB port
- Docking the pen in its USB cradle when the cradle is attached to a charging adapter

You can switch OFF the pen by

- Placing the cap on the pen
- Detaching the cradle from the PC while the pen is docked
- Configuring the Auto Power Off pen settings

Placing the Digital Pen in Bluetooth® Discoverable Mode

The pen is placed in discoverable mode each time the cap is removed from the pen. The Memory/Bluetooth Status LED flashes blue to indicate that this mode has been activated. When in this mode, the pen can be discovered by Bluetooth devices in the area. This mode is required to pair the pen successfully with a Bluetooth device. This mode is also activated each time the pen is removed from the cradle.

To disable discoverable mode, use the Bluetooth Digital Pen Configuration Utility control panel. See Customizing Digital Pen Settings for more information.

Recharging the Digital Pen

You can use the digital pen for up to 25 pages before the battery needs recharging. When the Battery Status LED turns red, the digital pen battery is low, and when this LED flashes red, the digital pen is about to run out of battery power.

Recharge the digital pen immediately by removing the cap and inserting the digital pen into the USB cradle. Connect the USB cradle to the computer. (See Connecting and Charging the Digital Pen for more information.)

Additionally, the digital pen can be charged using a wall or car charging adapter, which connects to the USB cradle (a qualified wall socket charger is provided in the Logitech Digital Pen with Bluetooth product package). These accessories are also available for separate purchase from Logitech. Contact your Logitech regional sales representative for more information about these products.

While the digital pen is charging, the Battery Status LED will slowly flash either red, yellow, or green depending upon the power level of the battery. If the battery is completely empty, it may take up to ten minutes before the LED flashes to indicate that the digital pen is charging. Refer to the table below for more information about the Battery, Memory, and Bluetooth Status LED:

Color of LED	Battery Level
Green	Battery has full charge. Stop charging the digital pen.
Yellow	Battery is less than 50% charged.
Red	Battery is low. Recharge now.
Blinking Red	Battery level is critically low. You must recharge now.

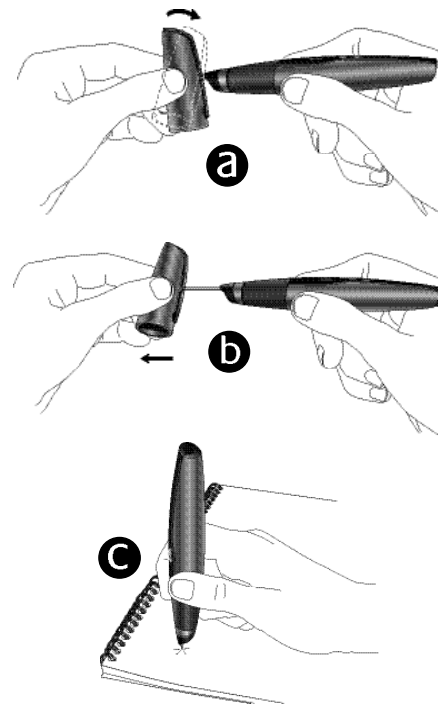
After the digital pen has been fully recharged, remove it from the USB cradle. Or disconnect the USB cable from the computer.

Replacing the Ink Cartridge

When the ink cartridge in the digital pen runs out, replace it with one of the refills supplied with your digital pen.

Note Only replace the ink cartridge when it is empty. The process of removing the cartridge can damage the cartridge tip. If you attempt to reuse a cartridge with a damaged tip, it may leak ink.

1. Remove the cap from the digital pen.
2. Place the ink cartridge tip in the hole in the pen's cap clip **a**.
3. Tilt the pen cap **a** slightly clockwise. Pull the cap away from the pen **b**. The ink cartridge should pull away with the cap. Remove the cartridge completely from the pen and discard it.
4. Insert a new ink cartridge into the digital pen.
5. Press the ink cartridge tip against the surface of the digital notebook to secure it in place **c**.



If you need ink cartridge refills, in the United States or Canada please check the Logitech® web site at www.iodirect.com. In Europe check www.logitechio.com.

The ink color and type is important for the functioning of the Logitech io² Digital Pen. If you purchase ink cartridge refills from another manufacturer, make sure the refills are ISO 12757-1 D1 compliant and use blue ink. This color works best. Black and green ink cartridges from other manufacturers are more likely to affect the digital pen's ability to record your writing.



Customizing Digital Pen Settings

A PC-based Bluetooth Digital Pen Configuration Utility software is available to support pen configuration and setup including ISP settings, power management, and customizable Bluetooth passkey management. The utility communicates with the pen through a connected mobile USB cradle.

The utility is part of the Logitech io² Digital Pen with Bluetooth Business Kit, which can be downloaded from the io for Business Solutions area of the Logitech.com website. Visit www.logitechio.com/jobusiness for more information.

Bluetooth® Compatibility and Functionality

The Logitech io² Digital Pen with Bluetooth wireless technology is compliant* with Bluetooth specifications 1.1 and 1.2.

Note *Interoperability between the Logitech io² Digital Pen with Bluetooth and products with Bluetooth wireless technology (BT 1.1 / 1.2 specifications) is not guaranteed. This functionality should be validated by the application developer or integrator before final mobile device selection is made.

Bluetooth® Specifications

Bluetooth Compatibility	Bi-directional, Bluetooth 1.1 / 1.2, Class 2
Bluetooth Range	3 Meters [Typical]
Bluetooth Passkey	4 Digit [Customizable]
Bluetooth Security Mode	Level 3: Authentication and Link Encryption
Bluetooth Interface Profiles	Bluetooth Dial-up Networking Profile (DUN)
	Bluetooth Object Push Profile (OPP)
	Bluetooth Serial Port Profile (SPP)



Bluetooth® Profiles

Bluetooth profiles include dial-up networking, object push profile, and serial port profile.

Dial-up Networking

The Dial-up Networking profile is used to get a network connection via a mobile phone. The digital pen will act as a data terminal and the phone as a gateway.

Object Push Profile

The Object Push Profile is used to send objects such as Anoto PGC files to compatible phones and PCs.



Serial Port Profile

A Bluetooth serial port named, "ANOTO OBEX," can be used to transfer digital files, if push via the standard Object Push Profile is not possible or desired.

Bluetooth profiles, associated with the digital pen, are intrinsically linked with Anoto communication protocol implementations. Please visit www.anoto.com for more information.

Bluetooth® Pairing

The digital pen supports both initiating and responding to pairing requests from compatible Bluetooth devices.

Initiating pairing from the digital pen occurs when you "tick" the Anoto pairing magic box. There are different pairing boxes for PCs and mobile devices.

The digital pen can also respond to a pairing request from a Bluetooth enabled device. The pairing respond state starts when the cap is removed. During this state, the digital pen is in discoverable, connectable, and pairable mode. Once started, the digital pen will remain in this state for a limited time of two minutes.

Pairing can be enabled/disabled by setting the pen's Discoverable Mode in the Bluetooth Digital Pen Configuration Utility.

Multiple-device Pairing

The digital pen can be paired against one mobile device and one PC at the same time. If the pen is successfully paired against a PC, any previous pairing against a PC is removed. In the same way, if the pen is successfully paired with a mobile device, any previous mobile device pairing will be removed.

Bluetooth® Passkey

A Bluetooth Passkey is used when you need to pair the digital pen with another device (e.g., a mobile phone/PDA or PC). A four-digit passkey is provided on the Logitech Pen Identification card that comes with your Logitech io² Digital Pen with Bluetooth.



Customized Paskey

The Bluetooth Paskey can be customized using the Bluetooth Digital Pen Configuration Utility, available from Logitech. See Customizing Digital Pen Settings for more information.

Digital Pen States

Pen State	Memory Indicator			Vibrating System	Description
	Color	Intensity	Blink		
Cap Off Discoverable	Blue	High	Pulse every 2 secs.		Timeout two minutes, pen down, cap on, or USB connected.
Pairing	Blue	High	Slow triangle wave		Tick on pairing pidget; it indicates that the digital pen is searching for a device to pair with. Timeout two minutes, or pairing succeeded/failed
Pairing Succeeded	Green	High	Solid for 2 secs.	Triple click	Shows when pairing has succeeded, then goes into standby.
Pairing Failed	Red	High	Two pulses then solid for 2 secs.	1 sec. on	No Bluetooth devices or problem with Bluetooth pin code, or similar. After the two pulses, the red light is solid to finish the timeout, then goes to standby.
Connecting	Blue	High	Slow triangle wave		Connecting to a Bluetooth device. Timeout depends on the type of the connection with the remote device.
Connection Failed	Red	High	Two pulses then solid for 2 secs.	1 sec. on	No Bluetooth devices, or similar. After the two pulses, the red light is solid to finish the timeout, then goes into standby.
Sending	Blue	High	Fast triangle wave		Sending data to a Bluetooth device.
Sent OK	Blue	High	Solid for 2 secs.	Triple click	Shows when sending has succeeded, then goes into standby.
Sending Failed	Red	High	Two pulses then solid for 2 secs.	1 sec. on	No Bluetooth devices, or similar. After the two pulses, the red light is solid to finish the timeout, then goes into standby.

Note If a Bluetooth transmission is active and the cap has been put on, the digital pen will finish the transmission before turning off, and it will continue to give indicator feedback.

If a Bluetooth transmission is active and the digital pen is docked in the cradle, the pen will finish the transmission prior to setting itself to communicate with the Bluetooth Digital Pen Configuration Utility software.

If a Bluetooth transmission is active and the pen is being used to write, the pen will buzz to indicate that it is busy until the transmission is finished. It cannot record new strokes until the transmission is complete.



Getting More Information

To learn more about the Logitech io² Digital Pen with Bluetooth®, visit the Logitech website at www.logitechio.com. There you'll find information about case studies and you will have access to the Logitech io² Digital Pen with Bluetooth Business Kit, which contains additional information on the product's features and functioning.

Troubleshooting

The Digital Pen Doesn't Turn on When I Take Off the Pen Cap.

Make sure the digital pen is fully charged. Insert the digital pen into the USB cradle to recharge the battery. If recharging does not correct the problem, the battery may be dead. Refer to Battery Information for more information.

The Digital Pen Doesn't Charge When Connected to the Cradle.

1. Make sure your computer is turned on.
2. Make sure the USB cradle is connected to your computer's USB port.
3. Try using another USB port on the computer.

The Digital Pen Is Non-Responsive.

If the digital pen exhibits the following symptoms, you may need to reset it:

- Does not turn off when you put the cap on.
- Does not vibrate after you mark an Anoto Pidget box.
- Vibrates when you attempt to write with it.

Use the following instructions to reset the digital pen:

1. Take off the digital pen cap.
2. Reset the digital pen by pressing the reset button with a paper clip or pencil tip. You will not lose any information in the digital pen.

If the digital pen is still frozen after performing a reset, you can perform a master reset to restore the digital pen to the factory settings. **Use this procedure only as a last resort because you will lose all the information in the digital pen's memory.** To perform a master reset, do the following:

1. Take off the digital pen cap, and then press the pen tip on a surface while you press the reset button with a paper clip or pencil tip.
2. Continue pressing the digital pen to the surface while you remove the paper clip or pencil tip from the reset button. Hold the digital pen to the surface until the Battery, Memory, and Bluetooth Status LEDs stop blinking red, and then lift the pen. The digital pen restarts and vibrates to indicate that it can be used again.
3. Insert the digital pen into the USB cradle. This allows the digital pen to upload the paper definition files it had before you reset the pen.



The Pen Is Not Discoverable by My Bluetooth Device.

If the digital pen is not discoverable by your Bluetooth device, check to ensure the discoverable mode is checked in the Bluetooth Digital Pen Configuration Utility control panel. This option must be checked to enable the activation of the Bluetooth discoverable mode.

Battery Information

This device uses a 3.6V 180mA Lithium Ion battery that should last the lifetime of the device. If you suspect your battery may be dead, try charging it. If the battery does not recharge, please contact Logitech Customer Support for repair information. The Logitech io does not have a user-serviceable battery. Please do **NOT** attempt to change the battery yourself. If the battery has died and you do not want Logitech to replace your battery, you should remove the pen cap and ink cartridge and dispose of the digital pen safely. Consult local laws and regulations for proper battery disposal in your region. If there are no local regulations concerning battery disposal, please dispose of the digital pen in an waste bin for electronic devices.

Caution The battery used in this device may present a risk of fire or chemical burn if mistreated. Do not disassemble, expose to heat above 100° C (212° F), or incinerate.

Do not use or charge the batteries if they appear to be leaking, discolored, deformed, or in any way abnormal. Do not leave your batteries discharged or unused for extended periods of time. When batteries are misused, they may explode or leak, causing burns and personal injury. If your batteries leak, use normal precaution and discard the batteries immediately. Leaking batteries can cause skin burns or other personal injury. Do not dispose of batteries in a fire or expose them to heat above 130° F (54° C). Do not immerse batteries in water. Keep batteries out of the reach of children.

Important Ergonomic Information

THIS DEVICE IS NOT INTENDED FOR EXTENDED OR INTENSIVE USE. Long periods of repetitive motion using an improperly set-up workspace, incorrect body position, and poor work habits may be associated with physical discomfort and injury to nerves, tendons, and muscles. If you feel pain, numbness, weakness, swelling, burning, cramping, or stiffness in your hands, wrists, arms, shoulders, neck, or back, see a qualified health professional. For more information, please read the Comfort Guidelines located on the Logitech web site at <http://www.logitech.com/comfort>.

International Standards and Safety

The Logitech io² complies with International Standard IEC 60825-1: 1998.



Caution Laser Radiation; Class 1M LED Product. Do not view directly with optical instruments, such as eye loupes, magnifiers, binoculars, and microscopes. Use of controls or adjustments or performance of procedures other than those specified herein may result in hazardous radiation exposure.

LED power is less than 20 mW in normal operation. Wavelength is 850 nm. Pulse duration is 200 microseconds/75Hz. This product is rated as a commercial product for operation at 32° F (0° C) to 104° F (40° C).



Country Safety Approvals Emissions and Immunity EMC

Country	Safety Approvals	RF and EMC (Emission and Immunity)
USA	<p>UL approval with US / C UL Listed Mark or CSA equivalent</p> <p>UL 60950 / CSA C22.2 No.60950 3rd Edition ITE device, Class III, SELV, supplied by Limited power source</p>	<p>Declaration of Conformity (DoC) as per FCC Part 15 Subpart B.</p> <p>TCB certification as per FCC Part 15 Subpart C.</p>
Canada	<p>US / C UL Listed Mark or CSA equivalent</p> <p>CSA C22.2 No.60950 3rd Edition</p>	<p>ICES-003:1997 (for the cradle through FCC approval)</p> <p>RSS-210 Issue 5 November 2002 (Low Power Licence-Exempt Radio communication Devices) (accepts & recognizes FCC Part 15 Subpart C.)</p>
Europe	<p>LVD Directives 73/23/EEC (safety part of CE marking)</p> <p>TUV-mark : - EN 60950-1 :2001 + A11 (safety part of CE marking.)</p> <p>Laser Safety - EN 60825-1 (1994) + A11 (1996) + A2 (2001) + A1 (2002)</p>	<p>R&TTE Directive 1999/5/EEC</p> <p>EMC : - EN 301 489-1 v.1.4.1 (2002:08) - EN 301 489-17 v.1.2.1 (2002:08)</p> <p>Emission : - EN 55022 class B - EN 61000-3-2 :2000 : Harmonics emission - EN 61000-3-3 :1995 : Fluctuations and flicker emission</p> <p>Immunity : - EN 61000-4-2 :1995 + A1(1998) + A2(2001) : Electrostatic Discharge (ESD) - EN 61000-4-3 :1996 + A1(1998) + A2(2001) : Immunity to Radiated, Radio- frequency Electromagnetic field, 80 MHz to 1000 MHz - EN 61000-4-4 :1995 + A1(2001) + A2(2001) : Electrical Fast transients / Bursts Immunity Test. - EN 61000-4-5 :1995 + A1(2001) : Surges, common and differential mode on AC power ports - EN61000-4-6 :1996 + A1(2001) : RF common mode (current clamp injection) on AC and DC ports (0,15 - 80 MHz) - EN61000-4-11 :1994 + A1(2001) : Voltage dips and interruptions</p> <p>RF : - EN 300 328-2 v.1.6.1 (2004-11)</p>
Australia/New Zealand	No additional requirement	<p>C-Tick mark: EMC as per AS/NZS3548 RF as per AS/NZS 4771:2000</p>

Please visit <http://logitech.com/compliance> for additional compliance information for your digital pen.



www.logitech.com/support



Location	Hotline Technical Help (Aide Technique)
Americas (USA)	English: +1 702 269 3457
Austria	+43-(0)1 502 221 348
Belgium	Dutch: +32-(0)2 626 89 60; French: +32-(0)2 626 89 62
Denmark	+45-35 44 55 17
Eastern Europe	English: +41-(0)21 863 54 01
Finland	+358-(0)9 817 100 21
France	+33-(0)1-43 62 34 14
Germany	+49-(0)69-92 032 166
Hungary	English: +41-(0)21 863 54 01
Ireland	+353-(0)1-605 8357
Italy	+39-02-214 08 71
Netherlands	+31-(0)10-243 88 98
Norway	+47-(0)23 500 063
Portugal	+351-21 316 4124
Spain	+34 -91-375 33 69
Sweden	+46-(0)8-519 920 20
Switzerland	D +41-(0)21-863 54 11; F +41-(0)21-863 54 31 I +41-(0)21-863 54 61
United Kingdom	+44 -(0)207-309-01 26
Other countries	English: +41-(0)21 863 54 01



www.logitech.com
www.logitechio.com

© 2005 Logitech. All rights reserved. Logitech, the Logitech logo, and other Logitech marks are owned by Logitech and may be registered. All other trademarks are the property of their respective owners. Logitech assumes no responsibility for any errors that may appear in this manual. Information contained herein is subject to change without notice.

623495-0100.80