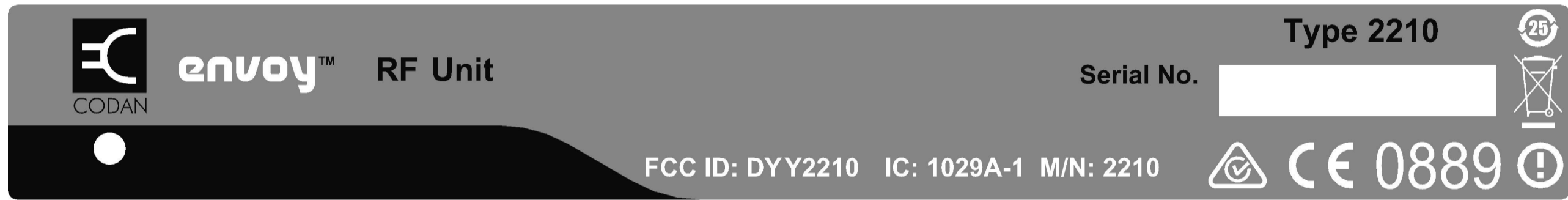


	1	2	3	4	5	6	7	8	9	10	11	12
A	DO NOT SCALE											ISSUE 2 REFER SH 1
B												ISSUE 3 REFER SH 1
C												ISSUE 4 REFER SH 1
D												ISSUE 5 REFER SH 1
E												
F												
G												
H												



0.2 x 45° R0.2 max				SCALE 2:1	©CODAN LIMITED, ACN 007 590 605: 2013 CONFIDENTIAL The information contained herein is proprietary to Codan Limited, and is to be used by the recipient solely for the purpose for which it is supplied. Codan does not permit the recipient to copy, adapt, publish or disclose the information to third parties except as otherwise agreed with Codan in writing.
MATERIAL	CHKD	NJA	16-04-2012	DATE 29-02-2012	
FINISH	APPD	NJA	26-11-2012		TITLE ESCUTCHEON, RF UNIT 2210
	TOLERANCES UNLESS OTHERWISE SPECIFIED				
	LINEAR ± 0.2 ANGULAR ± 0.5° FLATNESS ± 0.2 ROUGHNESS 1.6 µmRa			ISS 5a	DRAWING/DOC NO. 06-02806
					SHT 2 OF 2

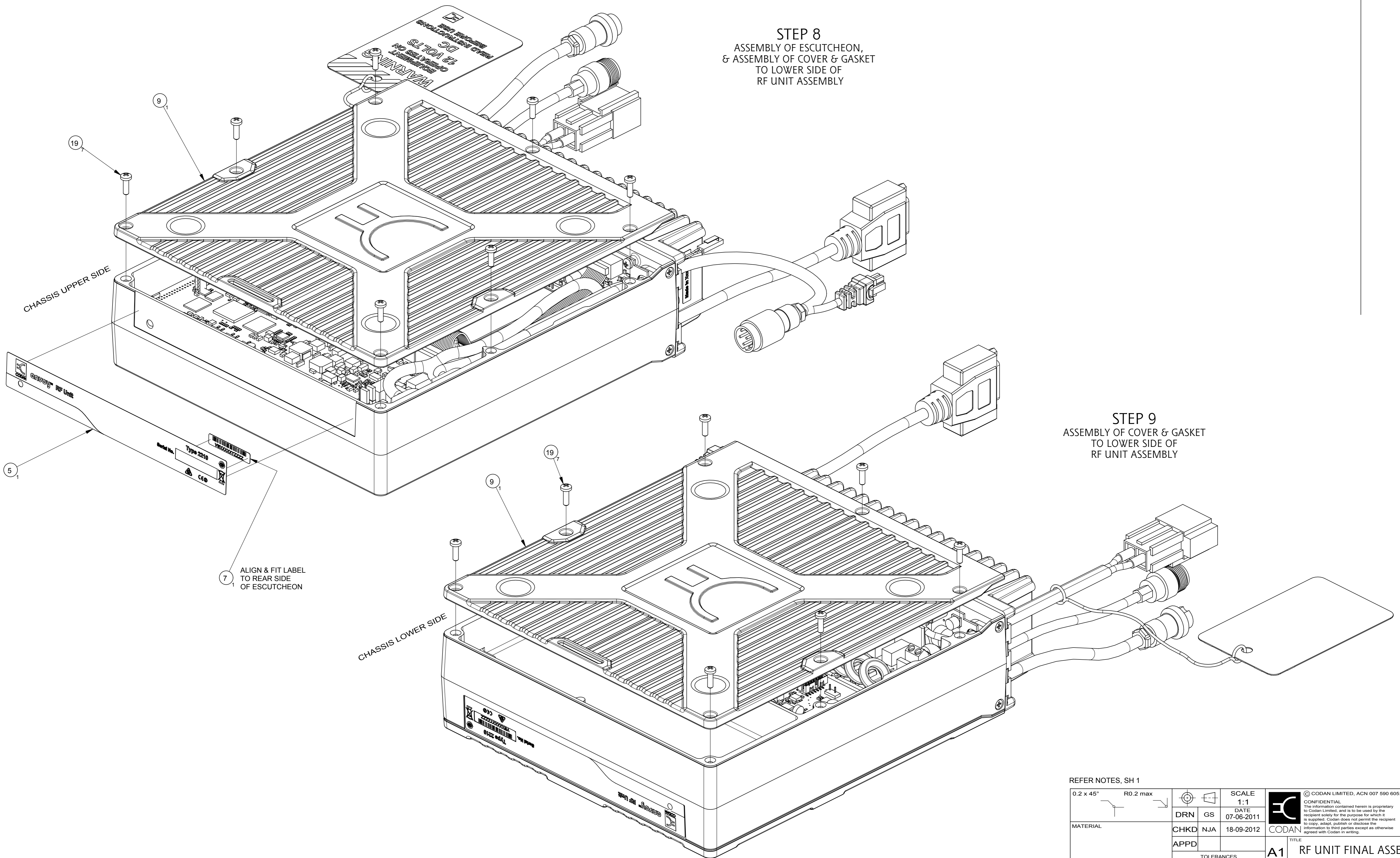
DIMENSIONS IN mm

DO NOT SCALE

A
B
C
D
E
F
G
H

STEP 8
ASSEMBLY OF ESCUTCHEON,
& ASSEMBLY OF COVER & GASKET
TO LOWER SIDE OF
RF UNIT ASSEMBLY

STEP 9
ASSEMBLY OF COVER & GASKET
TO LOWER SIDE OF
RF UNIT ASSEMBLY



CHASSIS UPPER SIDE

CHASSIS LOWER SIDE

7 ALIGN & FIT LABEL TO REAR SIDE OF ESCUTCHEON

REFER NOTES, SH 1

0.2 x 45°	R0.2 max		SCALE 1:1	© CODAN LIMITED, ACN 007 590 605: 2012 CONFIDENTIAL The information contained herein is proprietary to Codan Limited, and is to be used by the recipient solely for the purpose for which it is supplied. Codan does not permit the recipient to copy, edit, publish or disclose the information to third parties except as otherwise agreed with Codan in writing.
MATERIAL	CHKD	GS	DATE 07-06-2011	
FINISH	APPD	NJA	18-09-2012	A1 TITLE RF UNIT FINAL ASSEMBLY 2210
TOLERANCES UNLESS OTHERWISE SPECIFIED			ISS	
LINEAR ± 0.2 ANGULAR ± 0.5° FLATNESS ± 0.2 ROUGHNESS 1.6 µmRa			1	DRAWING/DOC NO. 08-07175
				SHT 5 OF 5

DIMENSIONS IN mm