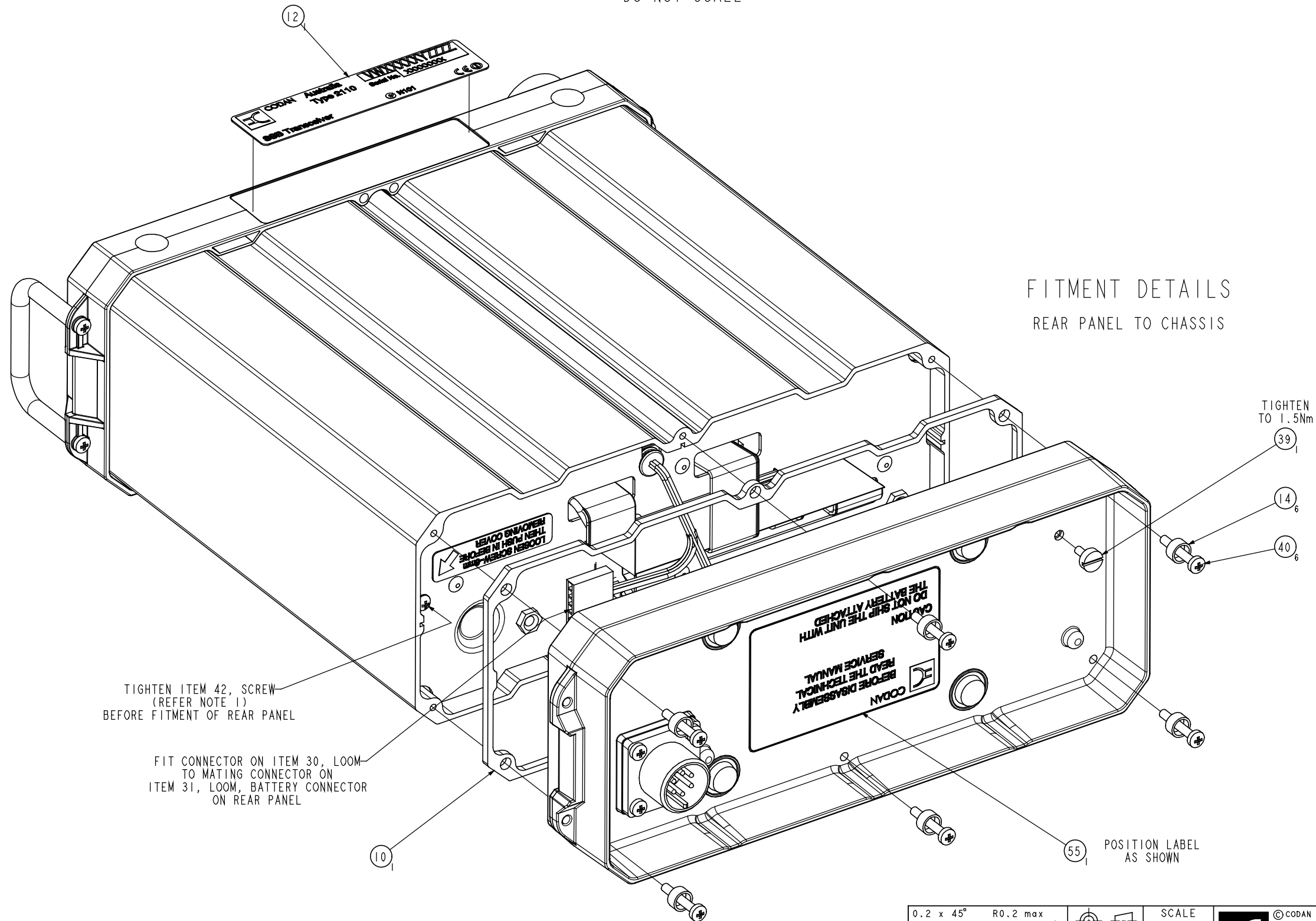


1 2 3 4 5 6 7 8 9 10 11 12

DO NOT SCALE

ISSUE B:
NOTE 3 ADDED
ITEM 39 BALLOON ADDED
REFER ALSO SH 2, 6
& 7

ISSUE 1:
TORQUE ADDED TO
ITEM 39
GREASE NOTE DELETED
FROM ITEM 10,
REFER ALSO SH 1,3,6-9



FITMENT DETAILS
REAR PANEL TO CHASSIS

TIGHTEN ITEM 42, SCREW
(REFER NOTE 1)
BEFORE FITMENT OF REAR PANEL

FIT CONNECTOR ON ITEM 30, LOOM
TO MATING CONNECTOR ON
ITEM 31, LOOM, BATTERY CONNECTOR
ON REAR PANEL

TIGHTEN
TO 1.5Nm

POSITION LABEL
AS SHOWN

NOTES:

1. TIGHTEN FASTENERS TO CODAN STD 01-01459, UNLESS OTHERWISE SPECIFIED
2. APPLY CONTACT GREASE, ITEM 48, TO EXTERNAL FASTENERS
3. ASSEMBLY TO BE PRESSURE TIGHT TO 20kPa

DIMENSIONS IN mm

0.2 x 45° R0.2 max	SCALE 1:1	©CODAN LIMITED, ACN 007 590 605: 2004 The information contained herein is proprietary to Codan Limited, and is to be used by the recipient solely for the purpose for which it is supplied. Codan does not permit the recipient to copy, adapt, publish or disclose the information to third parties except as otherwise agreed with Codan in writing.	
	DRN DJM	DATE	
	CHKD NJA	30-08-2004	
	APPD AJC	07-02-2005	
	TOLERANCES UNLESS OTHERWISE SPECIFIED		
	LINEAR ± 0.2		
	ANGULAR ± 0.5°		
	FLATNESS ± 0.2		
	ROUGHNESS 1.6 µmRa		
	ISS DRAWING/DOC NO.		SHT 11 OF 11
	A2		
	TITLE		
	FINAL ASSY 2110		
	08-06155		