

#### NOTES: QUICK START GUIDE

I've attached a draft of the Quick Start Guide for Model WT9450XE. The final edition will be the same as this document, except for the following modifications:

- Photographs on pages 1 and 2 will be replaced with those of Model WT9450XE.
- Back Panel Connectors chart on page 2 will be updated.

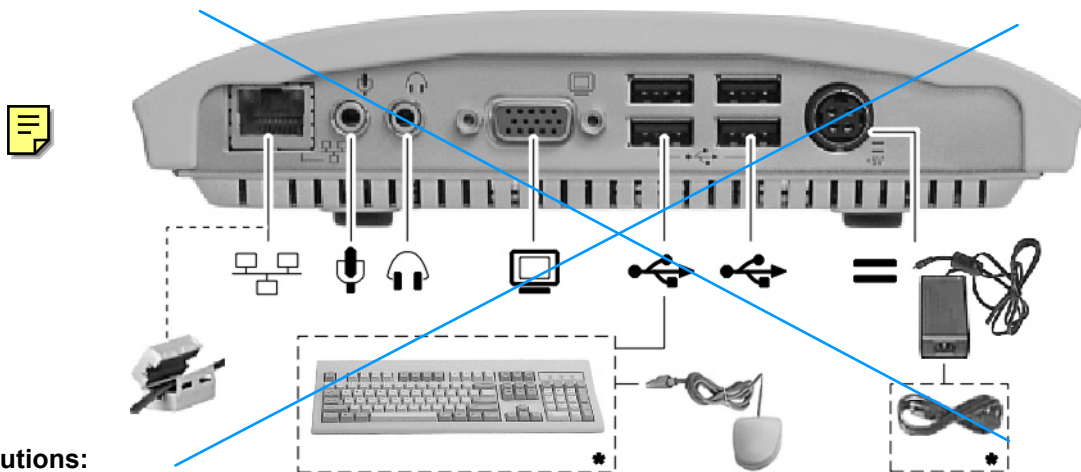
The existing text, including the Power Source information and the ferrite bead installation instructions, will remain in the WT9450XE Quick Start Guide.

# Winterm™ Model 9450XE XPE-Based Terminal

## Quick-Start Guide

### 1 Connect –

**Caution:** Improper connection, mounting, or use of this product could result in component failure and/or flash memory corruption. Read the following caution statements before setting up and operating the terminal.



#### Cautions:

##### Setup

- Do not connect power until all other connections are made. Connecting or disconnecting components or devices on the back panel when the terminal is receiving power can cause power surges and damage the terminal. (USB ports are hot-swappable.)
- Do not force a connector into its socket. If any undue resistance is encountered, ensure that the connector is correctly oriented to the receptacle.

##### Orientation and Venting

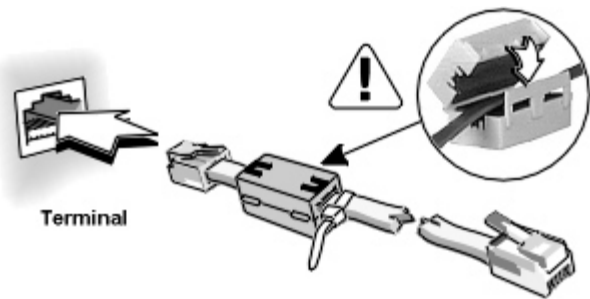
- Mount the terminal only as shown above or in accordance with the instructions provided with the Wyse-approved wall mount (see Note below). Improper orientation (such as component side down, where the back panel's symbols are upside down) could inhibit the dissipation of heat from the terminal and damage it.
- Allow sufficient space around the terminal for ventilation; do not place the terminal in any enclosure that restricts airflow around the terminal; do not place any objects on the terminal. Product environmental specifications are available through Wyse's Web site at <http://www.wyse.com/products/winterm/products.htm>.

##### Power Sources

- To ensure regulatory compliance, use only the power supply included in the shipping box, or a Wyse-approved equivalent, with the terminal. Also, the noise suppressor (ferrite bead) included in the box with the terminal must be installed on the network cable as described following these caution statements. Refer to the regulatory notices in the terminal's on-line documentation at <http://www.wyse.com/products/winterm/quickstart/9000.htm>.
- To prevent accidental loss of power, brown out, and spikes which could damage the terminal, avoid connecting it to any form of switching device (including power strips) or hard resetting the terminal by holding down the power button.
- When turning off the terminal, be sure to perform a complete shutdown (via the user interface or power button); do not disconnect the power cord, shut off power at a circuit breaker, etc., to turn off the terminal.

**Note:** Visit <http://www.wyse.com/products/accessories/mounting.htm> for information about approved wall-mount and monitor-mount accessory kits.

\*Supplied for U.S.A.; in other locales, check package contents or contact your Wyse reseller.



**Note:** To ensure that the product complies with EN55022B and FCC Class B requirements, follow these instructions to install the ferrite bead on your LAN cable.

**Note:** Attach ferrite bead to the terminal-end of the cable.

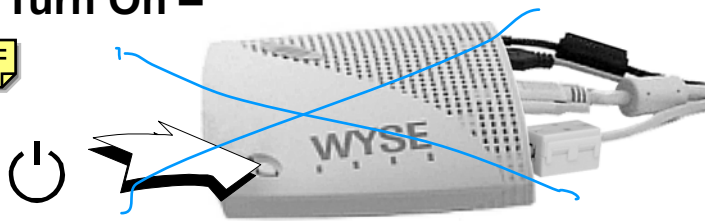
## Models 9235LE Back Panel Connectors

Icon	Connector/Indicator	Description
	Network	LAN connection, 10/100Base-T
	Microphone <sup>1</sup>	Audio input jack for a microphone
	Headphones	Audio output jack for headphones or powered speakers
	Video	Monitor interface
	USB port (4) <sup>2</sup>	USB device connection (keyboard connects to any USB port)
	Mouse	PS/2-type mouse interface, connect to USB keyboard
	Power	Power module cable interface

1. Supported in a future firmware release.

2. Only the use of up to two USB to Serial converters are supported at one time.

## 2 Turn On –



Wait until the initialization sequence is completed (amber light goes off) before pressing the power button.

**Important:** By unpacking and using the terminal, you agree to be bound by the license agreements in the users and administrators guides. See those agreements for specific details.

## 3 Configure – Setup is quick and simple...

The terminal is preset to auto-login as **User** (password: **User**). For administrative access, the terminal is preset to accept the user name **Administrator** (password: **Administrator**). VNC is also preset to start automatically (password: **Wyse**). User names are not case sensitive; passwords are case sensitive.

**Caution:** It is strongly advised that the administrative password be changed immediately upon configuring the terminal for use.

## 4 Help – Need more information or upgrades/accessories?

<http://www.wyse.com/products/winterm/quickstart/9000.htm>

Need more information on Wyse Rapport, the remote management software that comes with this terminal, or Wyse's automated warranty registration<sup>†</sup> process?

<http://www.wyse.com/bundle>

<sup>†</sup>Register within 90 days to get 2 years' extended warranty at no cost.



Wyse Technology Inc.  
3471 North First Street  
San Jose, CA 95134-1801 U.S.A.



883753-01 Rev. A  
July 2002