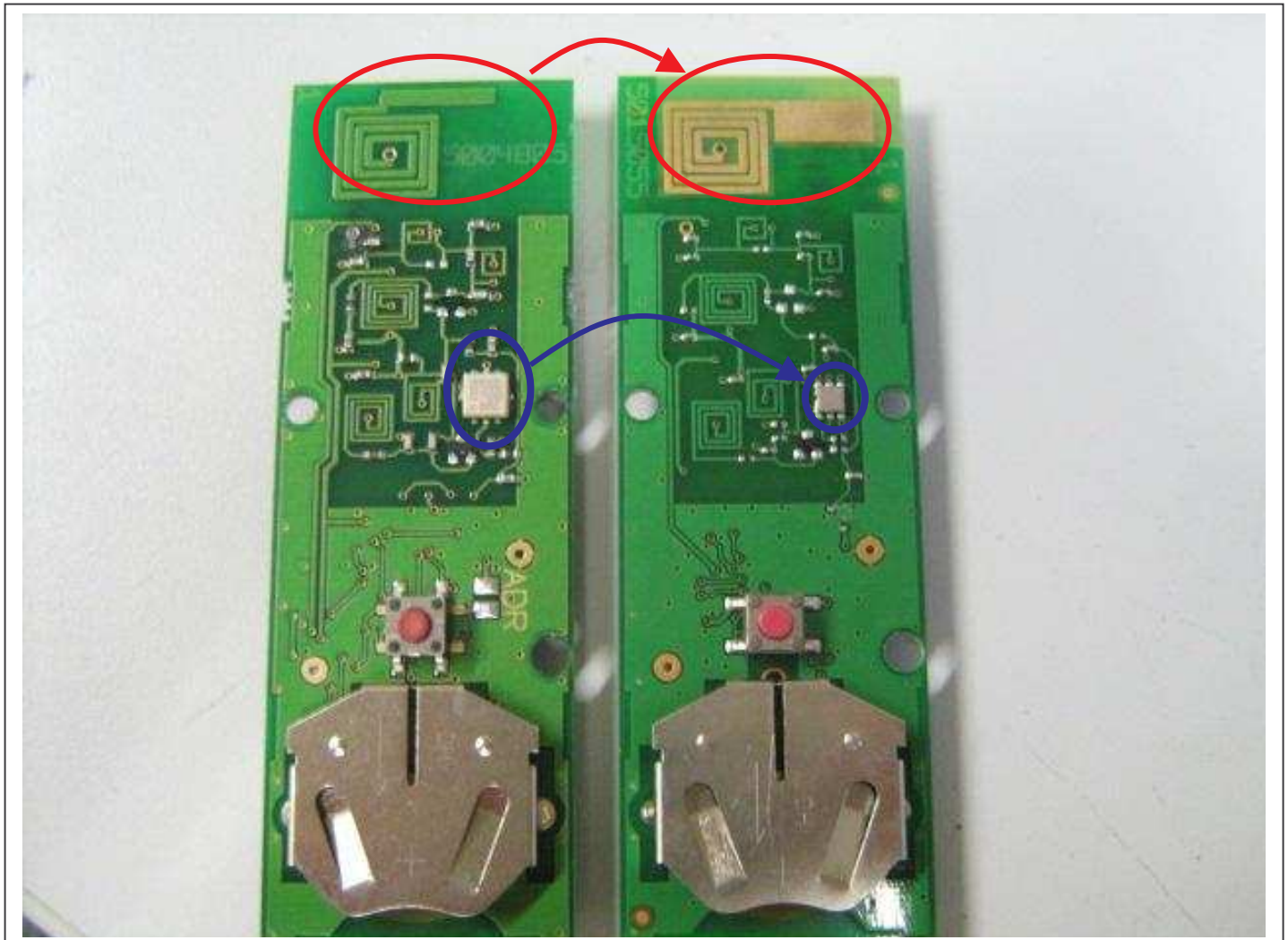


# IMPROVEMENT OF THE NEW DESIGN OF THE TELIS 4 AND TELIS SOLIRIS

Side 1:

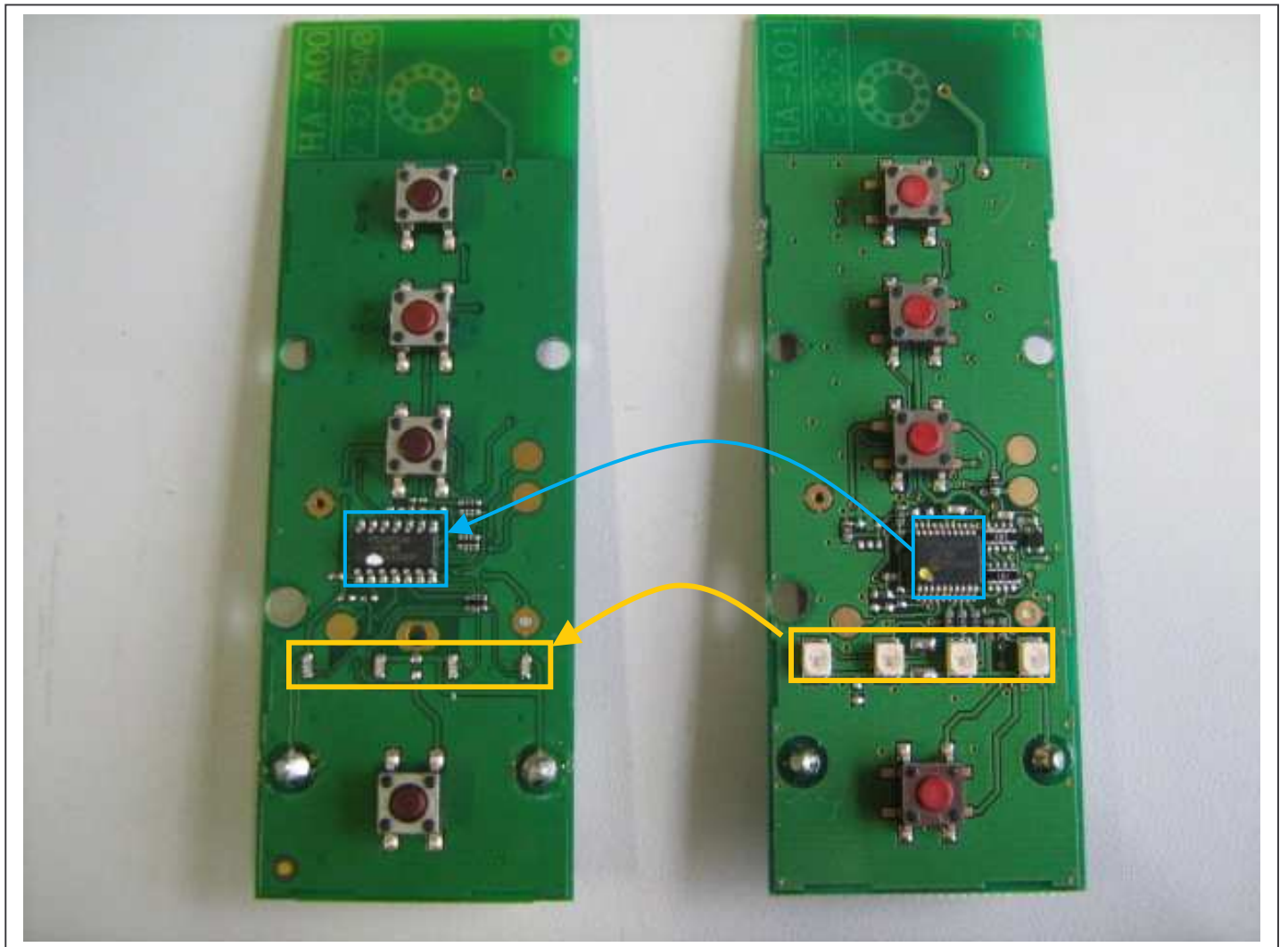


Old Version

New Version

New resonator CMS  
New design of antenna  
Smallest CMS components.  
New design of PCB for the components improvements

## Side 2:



New Version

Old Version

- New microprocessor
- Smallest Leds
- Smallest CMS components.
- New design of PCB for the components improvements

Guillaume BRUNEAU