



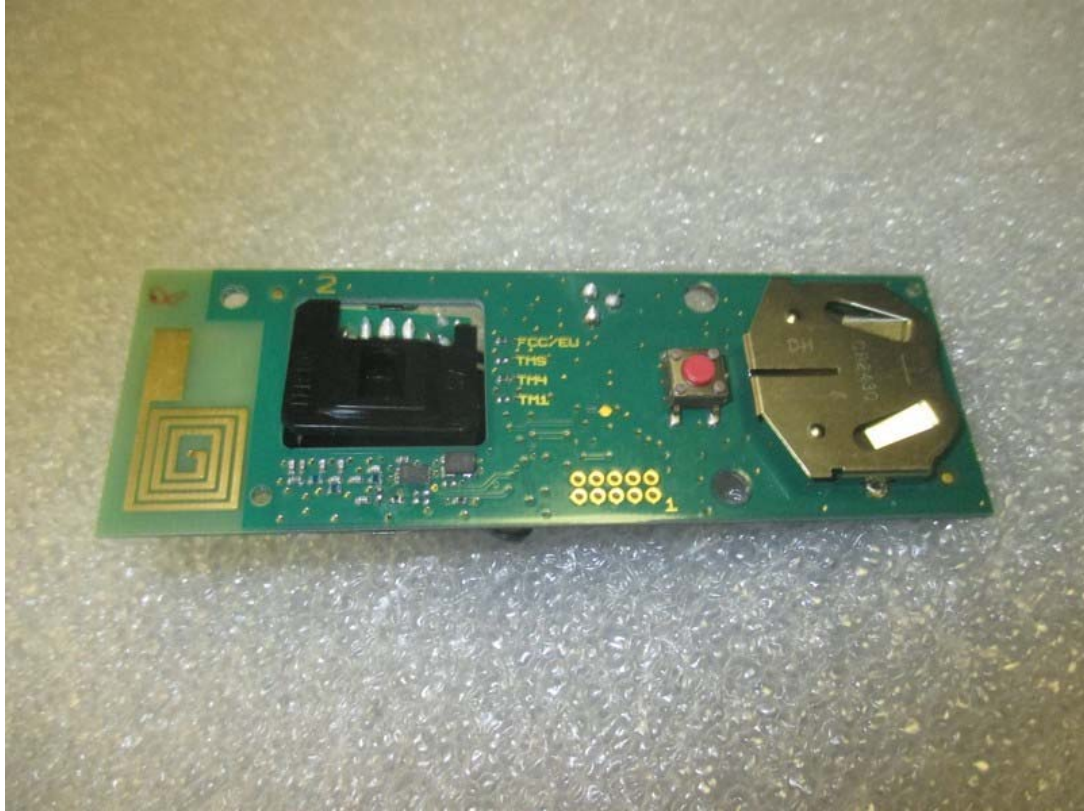
**Figure 7.3 Inside View (TELIS 4)**



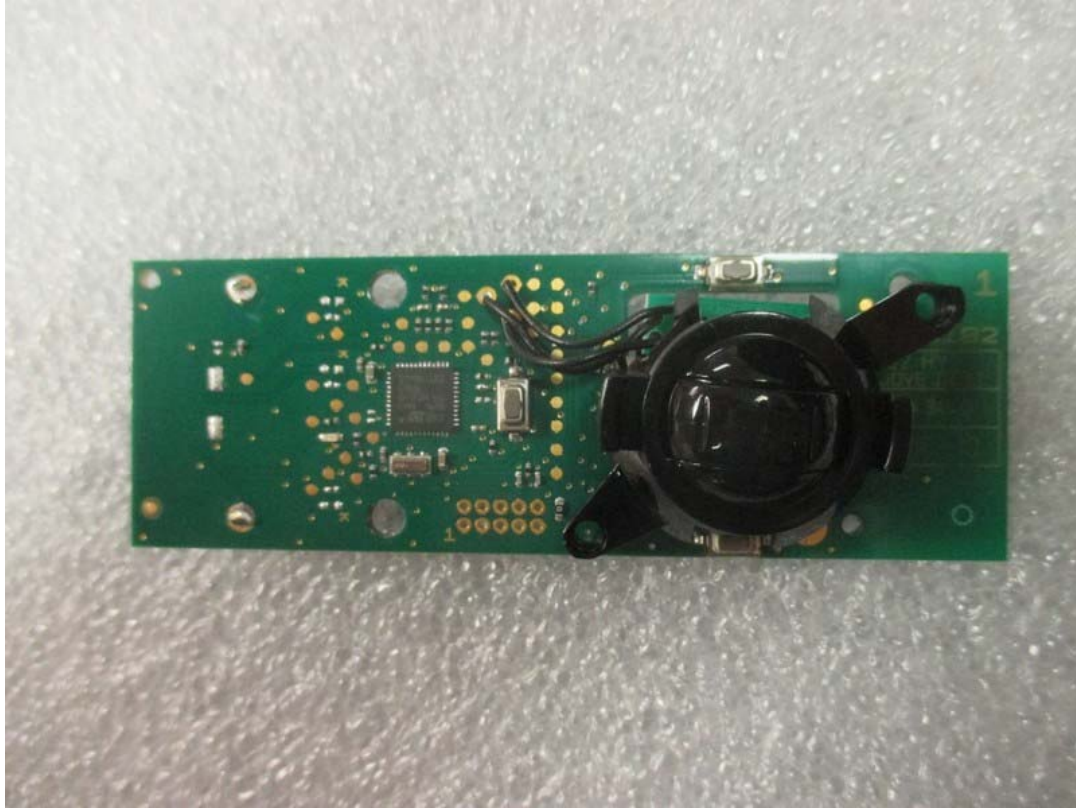
**Figure 7.3.1 Inside View (TELIS 1)**



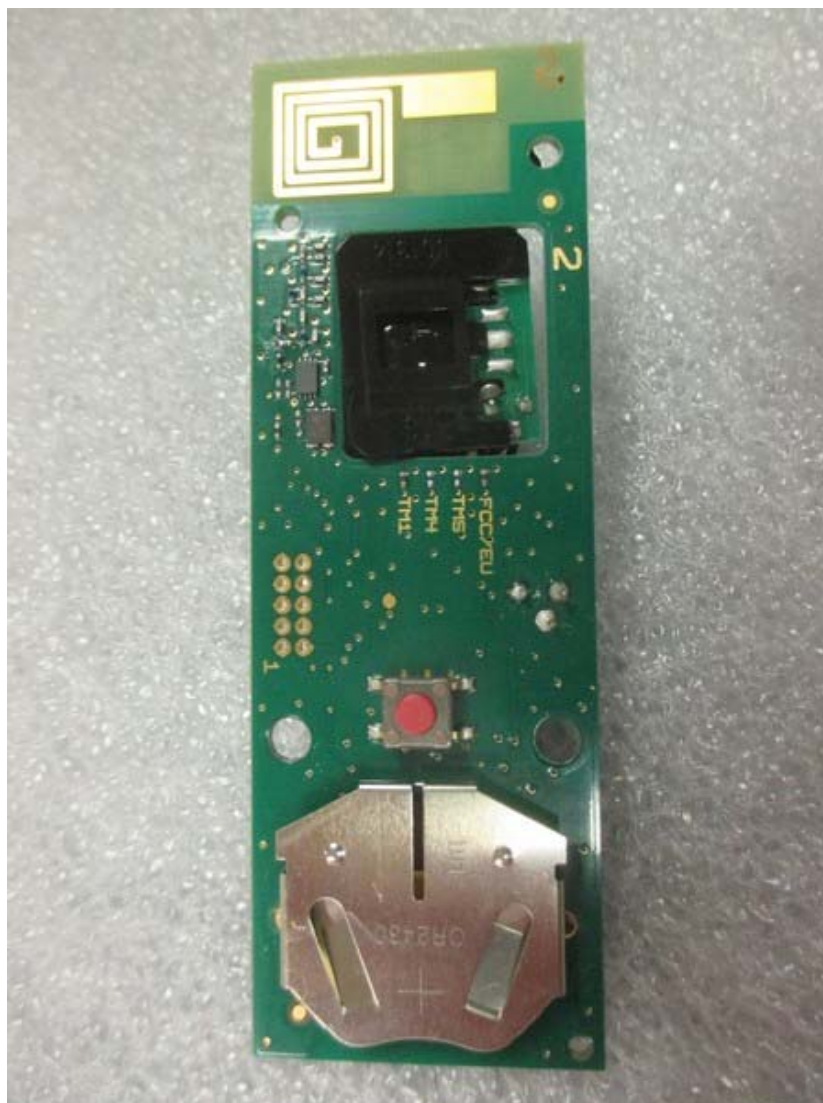
**Figure 7.4 PCB Front Side (TELIS 4)**



**Figure 7.5 PCB Back Side (TELIS 4)**



**Figure 7.6 PCB Front Side (TELIS 1)**



**Figure 7.7 PCB Back Side (TELIS 1)**