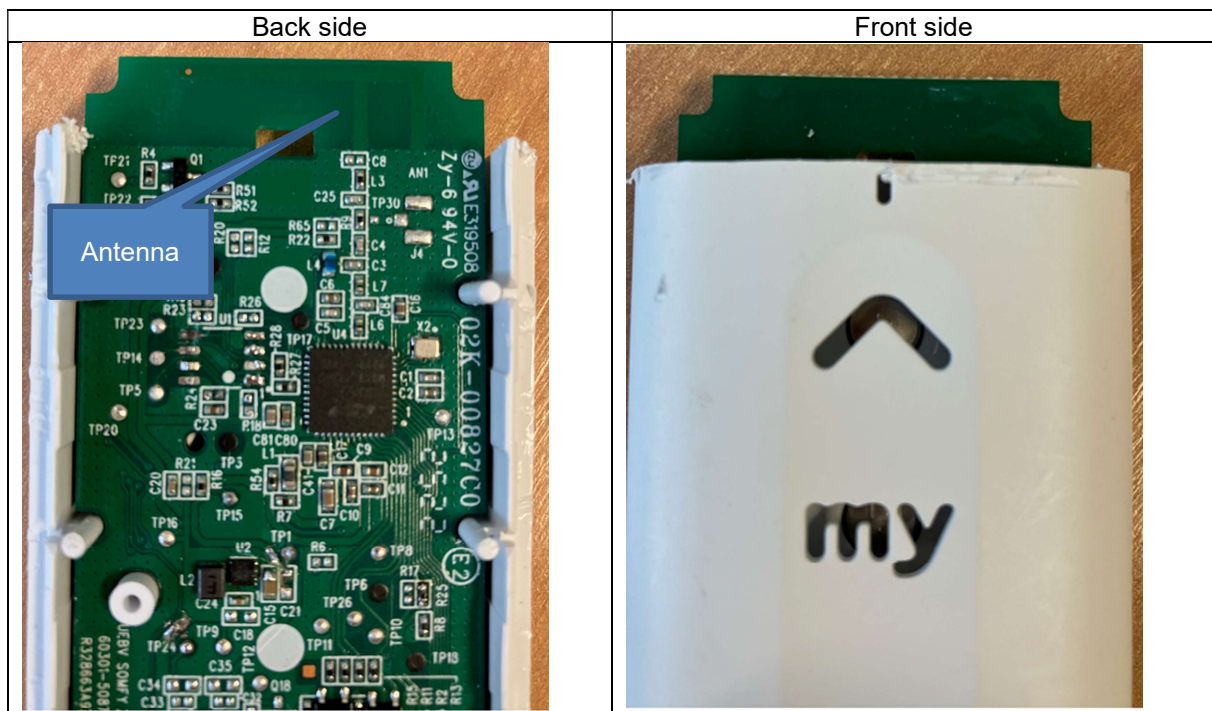


1. PRESENTATION

This technical document aims to define the user's exposure to Zigbee frames (distance and radio power)

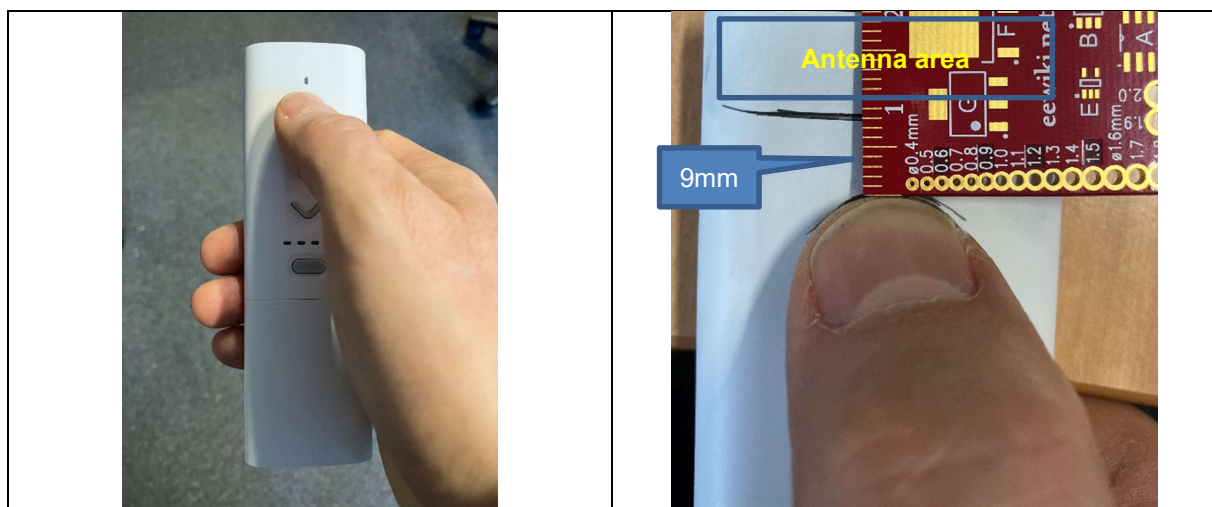
2. DISTANCE BETWEEN ANTENNA AND USER'S FINGER

2.1. Location of the antenna



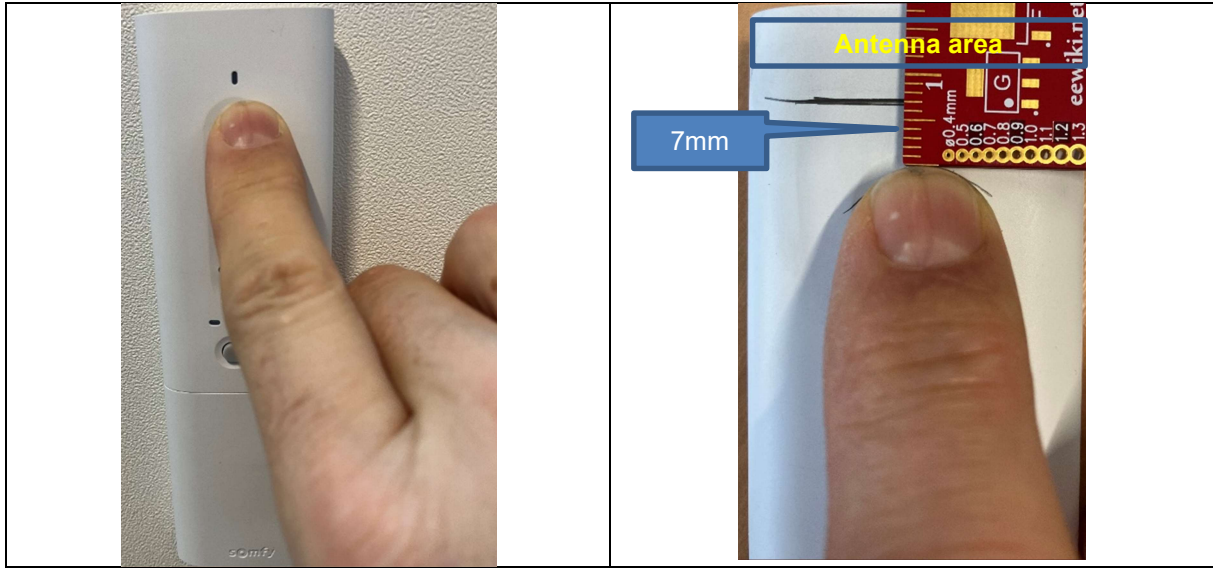
The antenna is on the opposite side of the buttons

2.2. Normal use in the hand



	MEASUREMENT REPORT	17/02/2023
	YSIA 1C 5C ZIGBEE	R0

2.3. On the wall



2.4. Conclusion

in a normal mode, the distance between the finger and the antenna of the remote control is more than 5mm.