

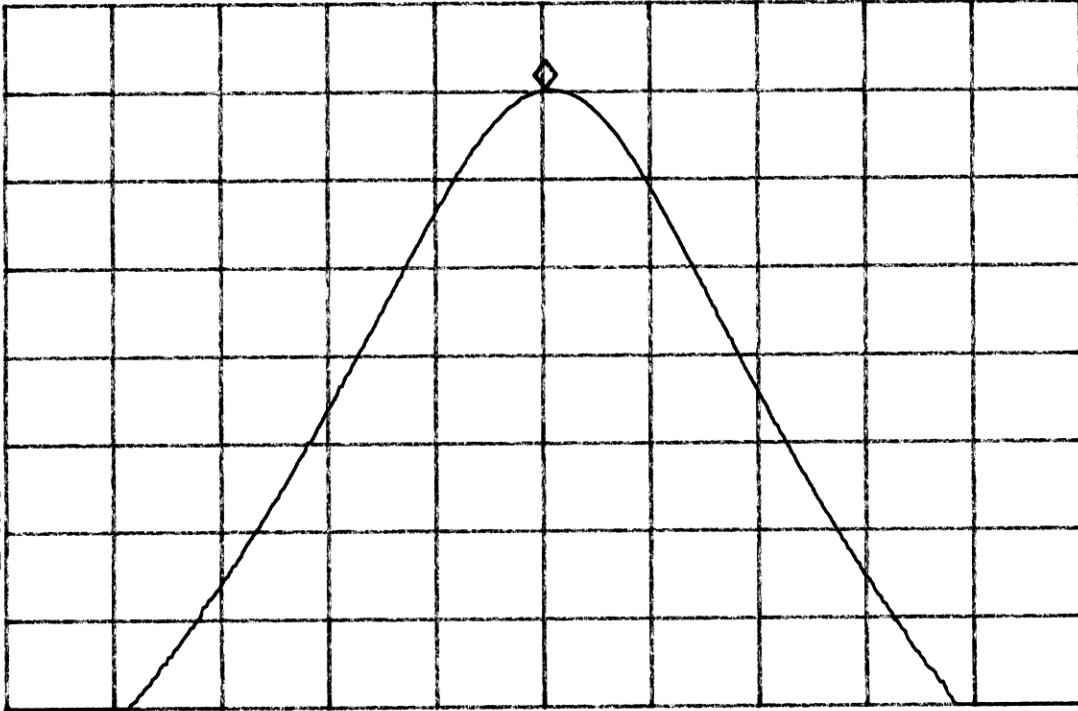
10:40:45 AUG 16, 1999

LX5120, STABILITY, HIGH FREQ, 50° MKR 469.98763 MHz
REF 110.0 dBμV AT 10 dB PG -21.0 dB 105.14 dBμV

No user
Menu

PEAK
LOG
5
dB/

VA SB
SC FC
CORR



CENTER 469.98763 MHz
#RES BW 10 KHz

#VBW 10 KHz

SPAN 77.30 kHz
SWP 30.0 msec

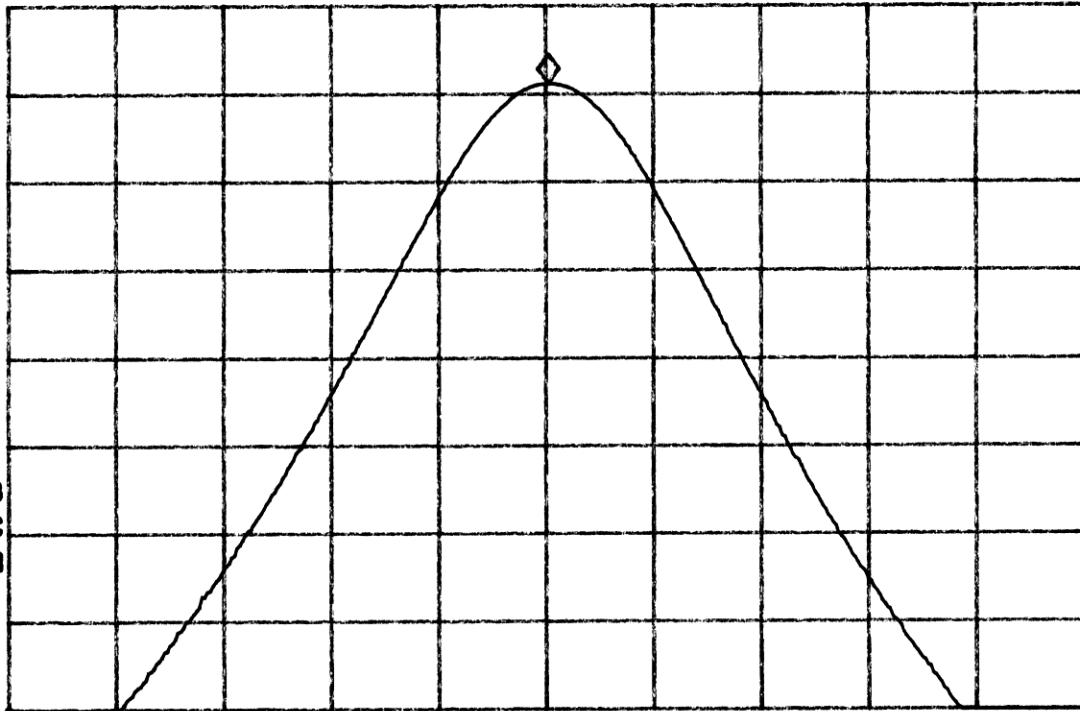
10:20:48 AUG 16, 1999

LX5120, STABILITY, HIGH FREQ, 30^c MKR 469.98783 MHz
REF 110.0 dB μ V AT 10 dB PG -21.0 dB 105.63 dB μ V

No user
Menu

PEAK
LOG
5
dB/

VA SB
SC FC
CORR



CENTER 469.98763 MHz
#RES BW 10 KHz

#VBW 10 KHz

SPAN 77.30 KHz
SWP 30.0 msec

09: 56: 49 AUG 16, 1999

LX5120, STABILITY, HIGH FREQ, 10°

MKR 469.98725 MHz

REF 110.0 dBμV

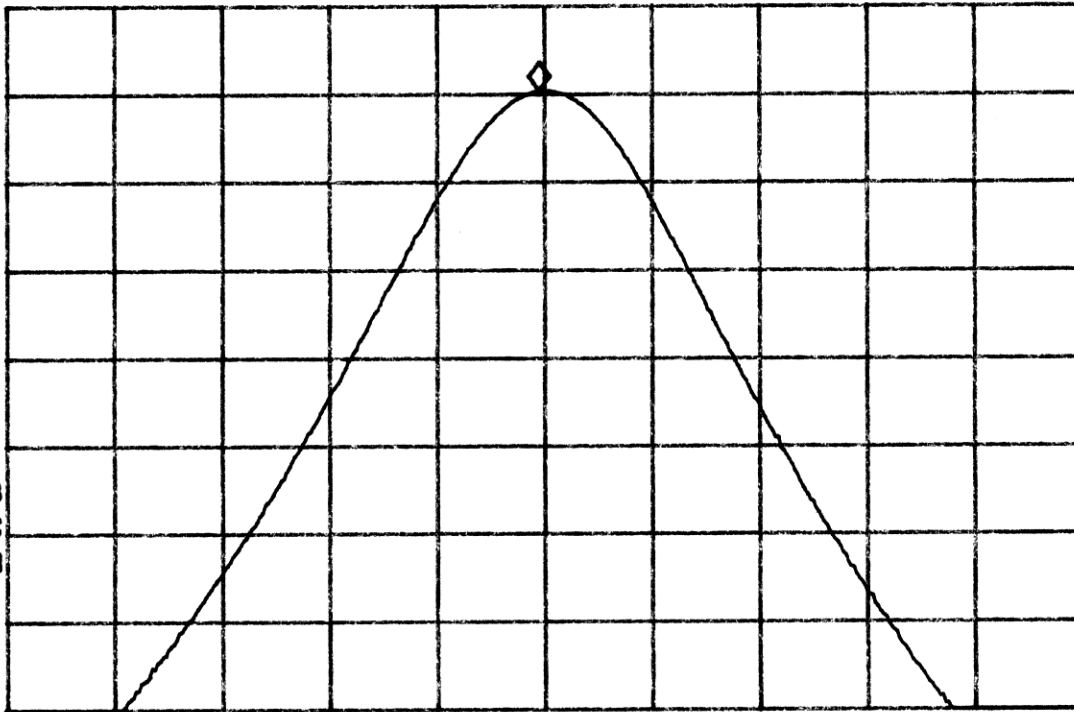
AT 10 dB PG -21.0 dB

105.21 dBμV

No user
Menu

PEAK
LOG
5
dB/

VA SB
SC FC
CORR



CENTER 469.98763 MHz

#RES BW 10 KHz

#VBW 10 KHz

SPAN 77.30 KHz

SWP 30.0 msec

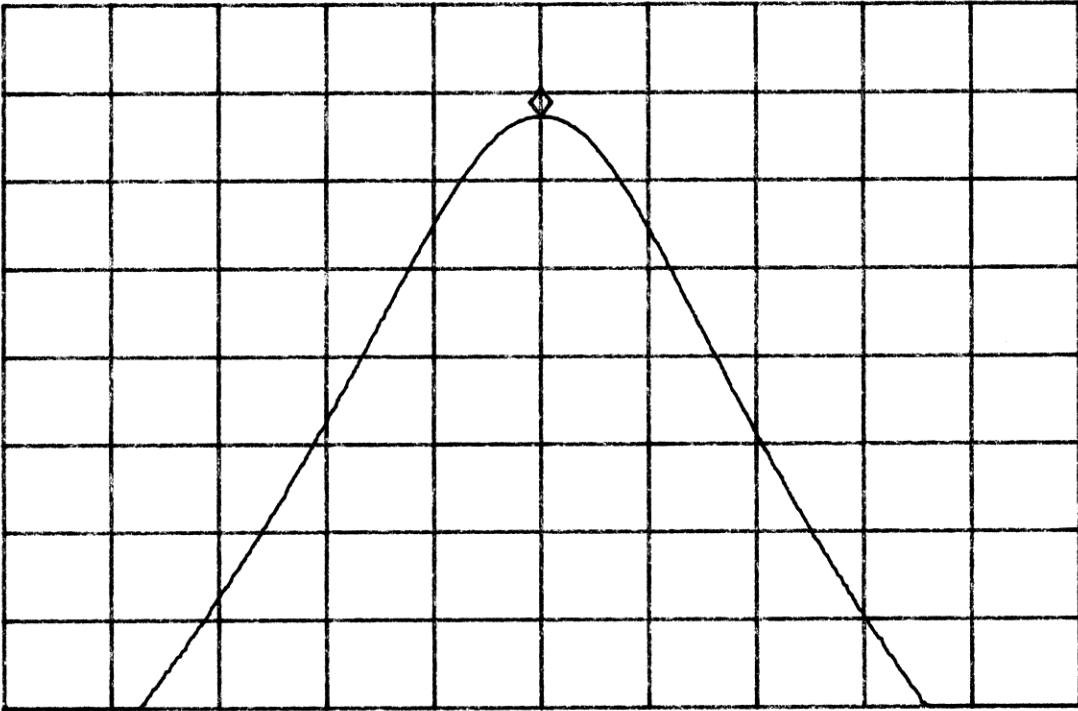
09: 32: 55 AUG 16, 1999

LX5120, STABILITY, HIGH FREQ, -10^c MKR 469.98763 MHz
REF 110.0 dB μ V AT 10 dB PG -21.0 dB 103.63 dB μ V

No user
Menu

PEAK
LOG
5
dB/

VA SB
SC FC
CORR



CENTER 469.98763 MHz
#RES BW 10 KHz

#VBW 10 KHz

SPAN 77.30 KHz
SWP 30.0 msec

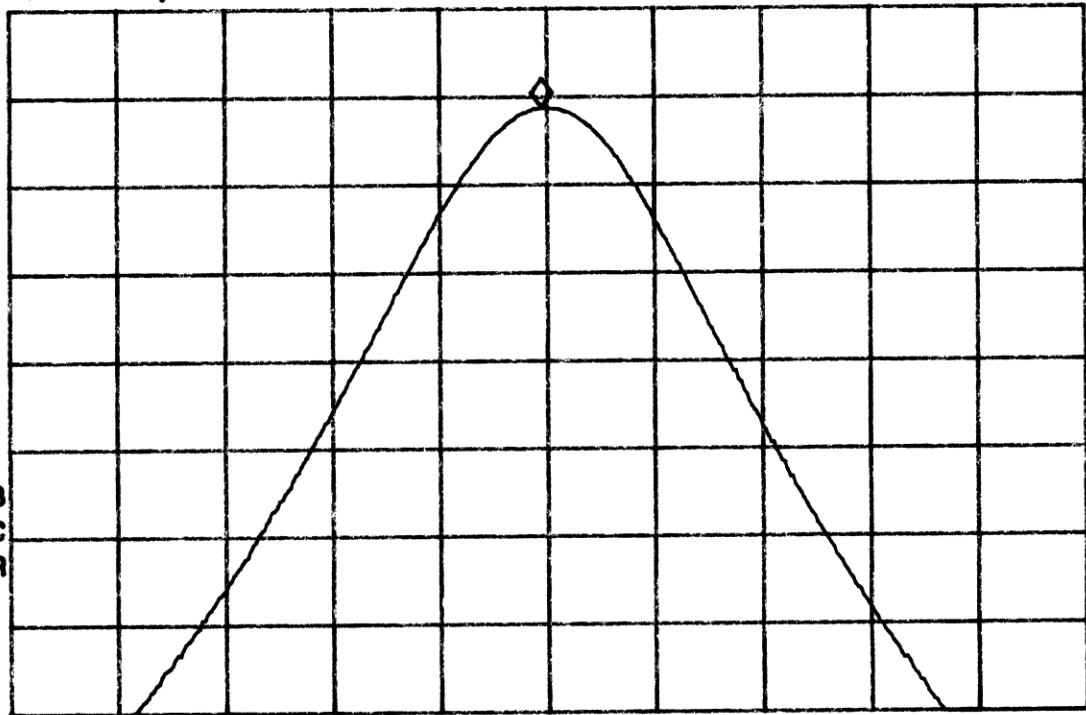
09:04:47 AUG 16, 1999

LX5120, STABILITY, HIGH FREQ, -30° MKR 469.98725 MHz
REF 110.0 dBμV AT 10 dB PG -21.0 dB 104.42 dBμV

No user
Menu

PEAK
LOG
5
dB/

VA SB
SC FC
CORR



CENTER 469.98763 MHz
RES BW 10 kHz

VBW 10 kHz

SPAN 77.30 kHz
SWP 30.0 msec

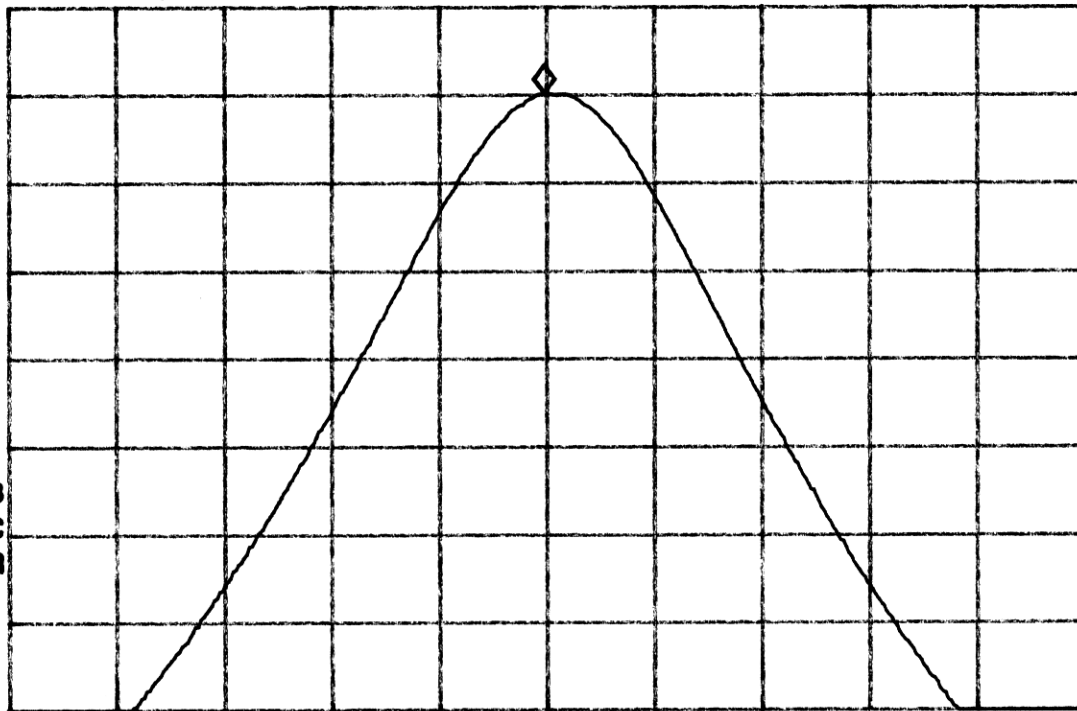
10:32:18 AUG 16, 1999

LX5120, STABILITY, HIGH FREQ, 40° MKR 469.98744 MHz
REF 110.0 dBμV AT 10 dB PG -21.0 dB 105.11 dBμV

No user
Menu

PEAK
LOG
5
dB/

VA SB
SC FC
CORR



CENTER 469.98763 MHz
#RES BW 10 KHz

#VBW 10 KHz

SPAN 77.30 KHz
SWP 30.0 msec

10:08:52 AUG 16, 1999

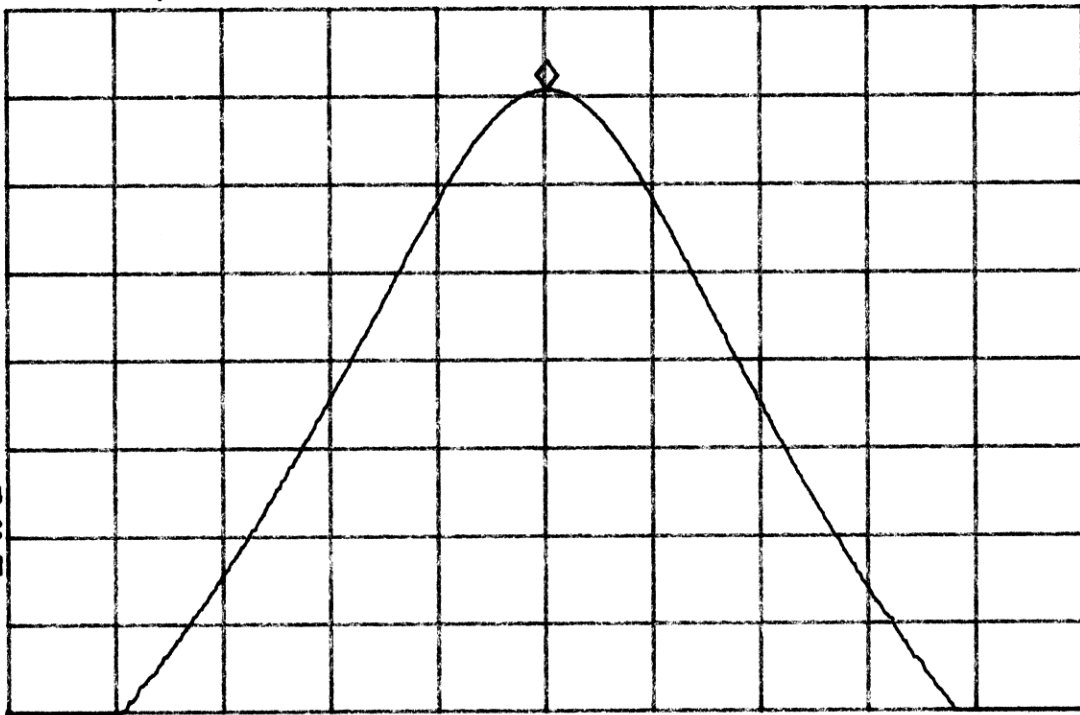
LX5120, STABILITY, HIGH FREQ, 20 MKR 469.98783 MHz

REF 110.0 dBμV AT 10 dB PG -21.0 dB 105.40 dBμV

No user
Menu

PEAK
LOG
5
dB/

VA SB
SC FC
CORR



CENTER 469.98763 MHz

#RES BW 10 KHz

#VBW 10 KHz

SPAN 77.30 KHz

SWP 30.0 msec

09: 48: 25 AUG 16, 1999

LX5120, STABILITY, HIGH FREQ, 0

MKR 469.98744 MHz

REF 110.0 dB μ V

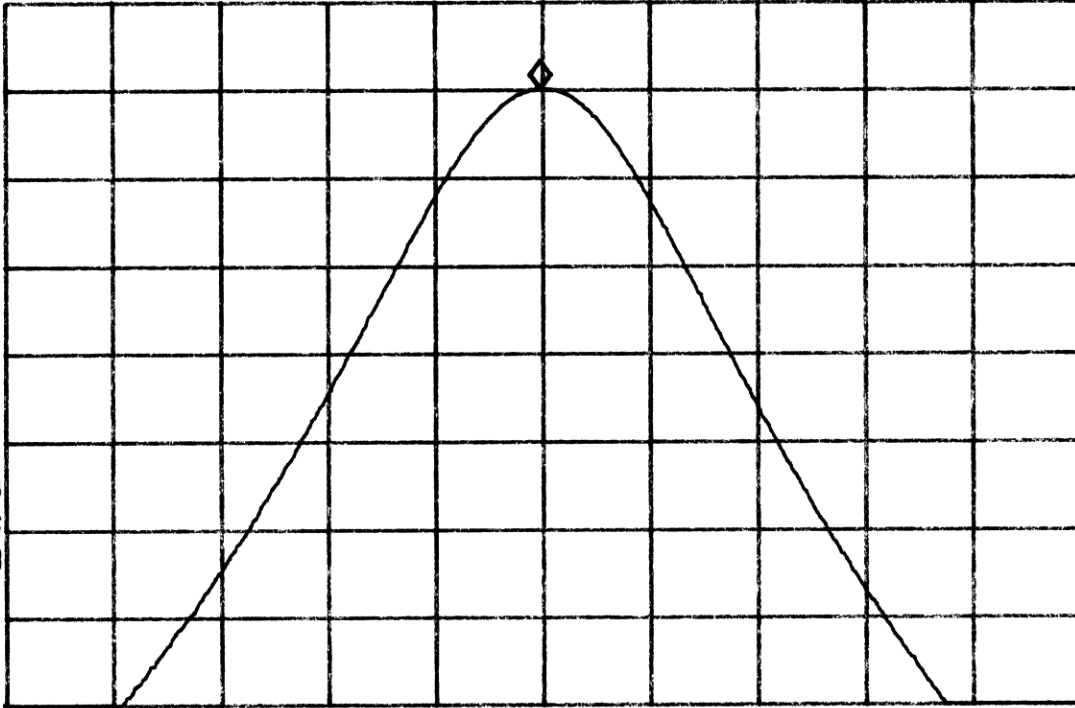
AT 10 dB PG -21.0 dB

105.07 dB μ V

No user
Menu

PEAK
LOG
5
dB/

VA SB
SC FC
CORR



CENTER 469.98763 MHz

#RES BW 10 kHz

#VBW 10 kHz

SPAN 77.30 kHz

SWP 30.0 msec

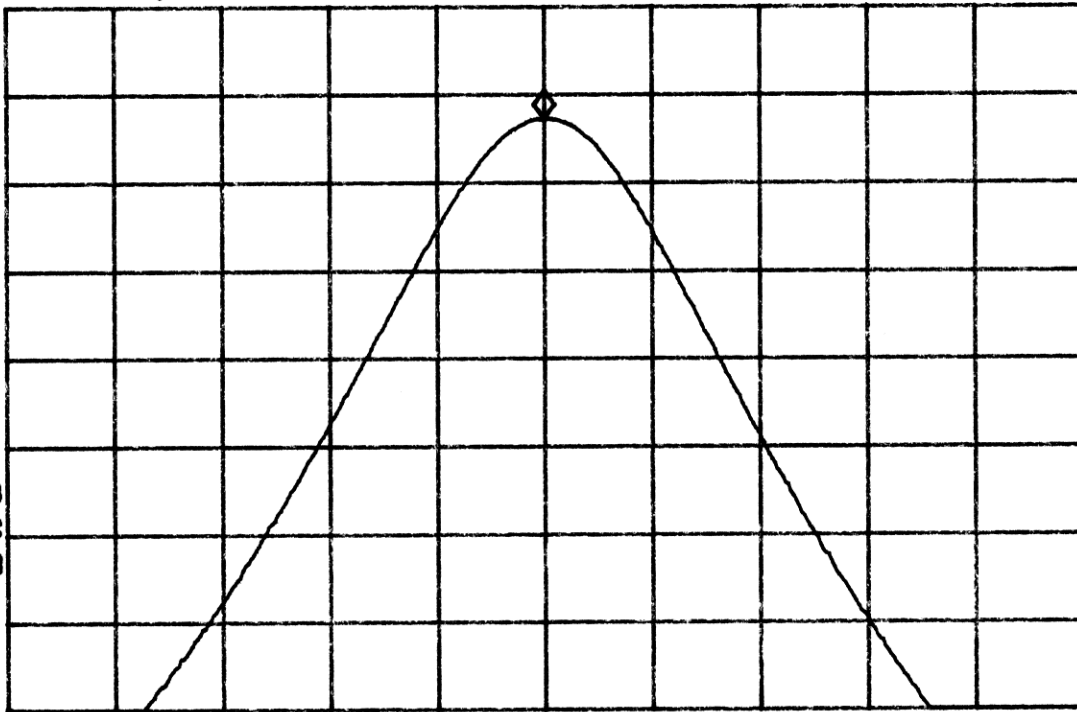
09:20:28 AUG 16, 1999

LX5120, STABILITY, HIGH FREQ, -20° MKR 469.98763 MHz
REF 110.0 dBμV AT 10 dB PG -21.0 dB 103.63 dBμV

No user
Menu

PEAK
LOG
5
dB/

VA SB
SC FC
CORR



CENTER 469.98763 MHz
#RES BW 10 KHz

#VBW 10 KHz

SPAN 77.30 KHz
SWP 30.0 msec