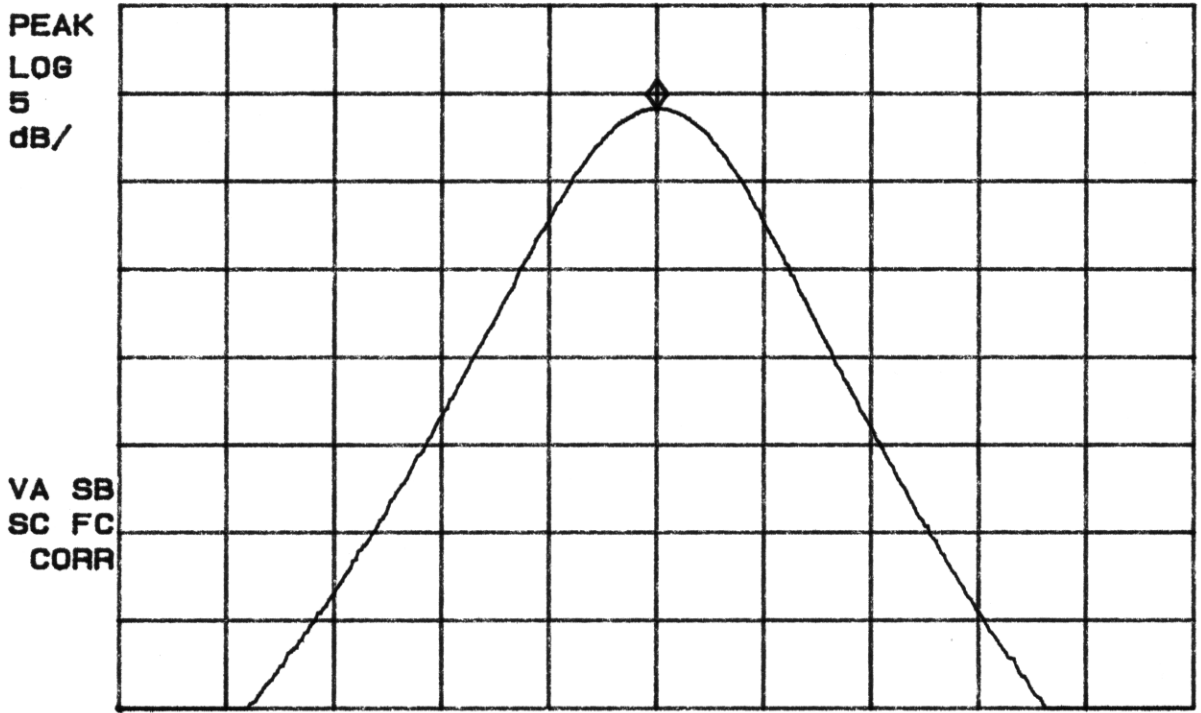


09:55:37 AUG 12, 1999
LX5120, STABILITY, LO FREQ, 1.0V MKR 460.01325 MHz
REF 110.0 dBμV AT 10 dB PG -21.0 dB 104.17 dBμV

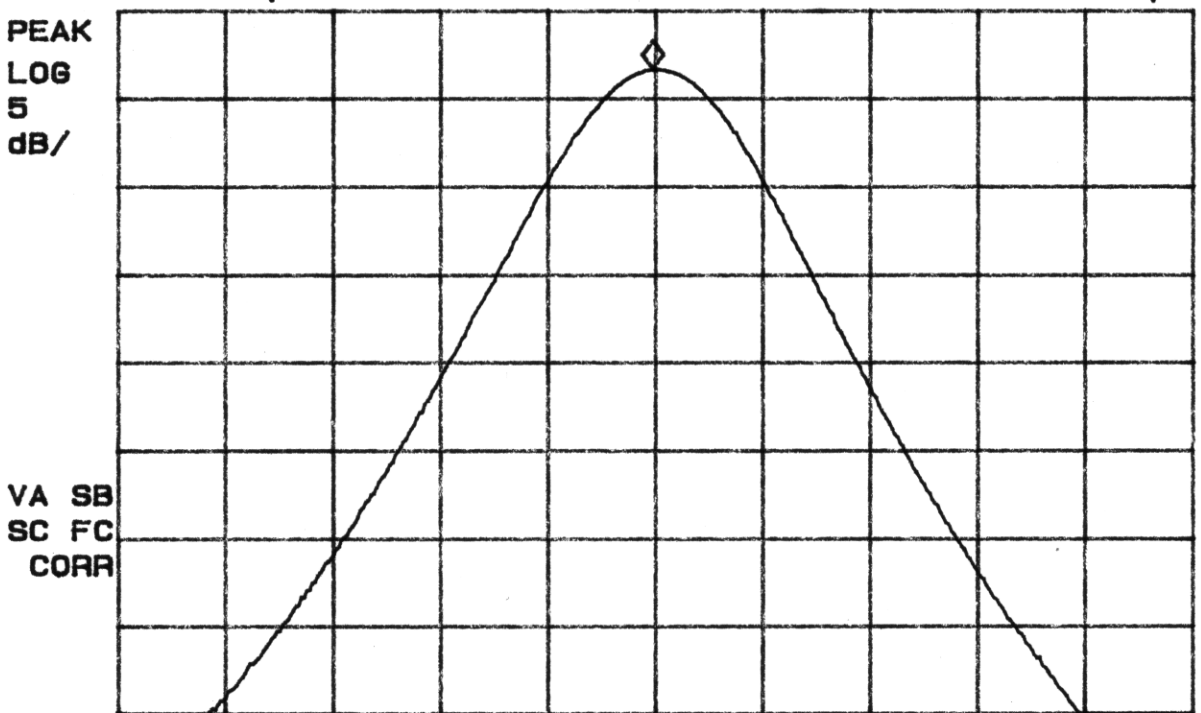
No user Menu



CENTER 460.01325 MHz SPAN 77.30 kHz
#RES BW 10 kHz #VBW 10 kHz SWP 30.0 msec

09:58:45 AUG 12, 1999
LX5120, STABILITY, LO FREQ, 1.5V MKR 460.01306 MHz
REF 110.0 dBμV AT 10 dB PG -21.0 dB 106.69 dBμV

No user Menu

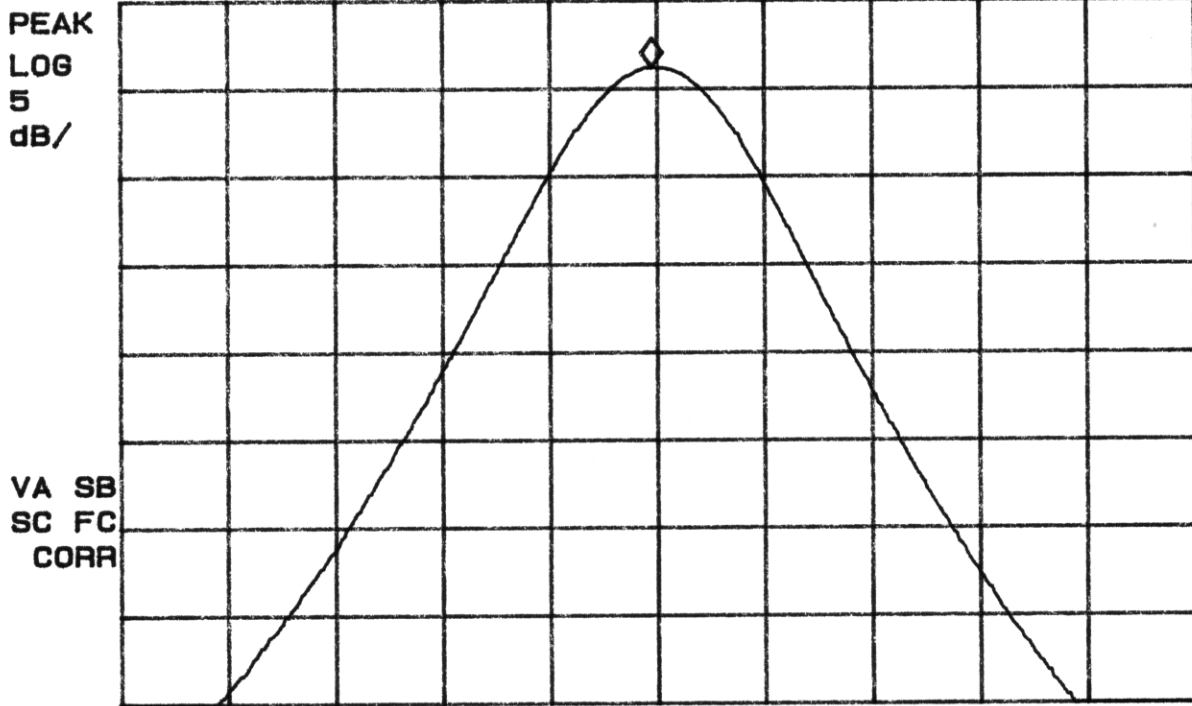


CENTER 460.01325 MHz SPAN 77.30 kHz
#RES BW 10 kHz #VBW 10 kHz SWP 30.0 msec

10:02:57 AUG 12, 1999

LX5120, STABILITY, MID FREQ, 1.5V MKR 465.00058 MHz
REF 110.0 dB μ V AT 10 dB PG -21.0 dB 106.23 dB μ V

No user
Menu

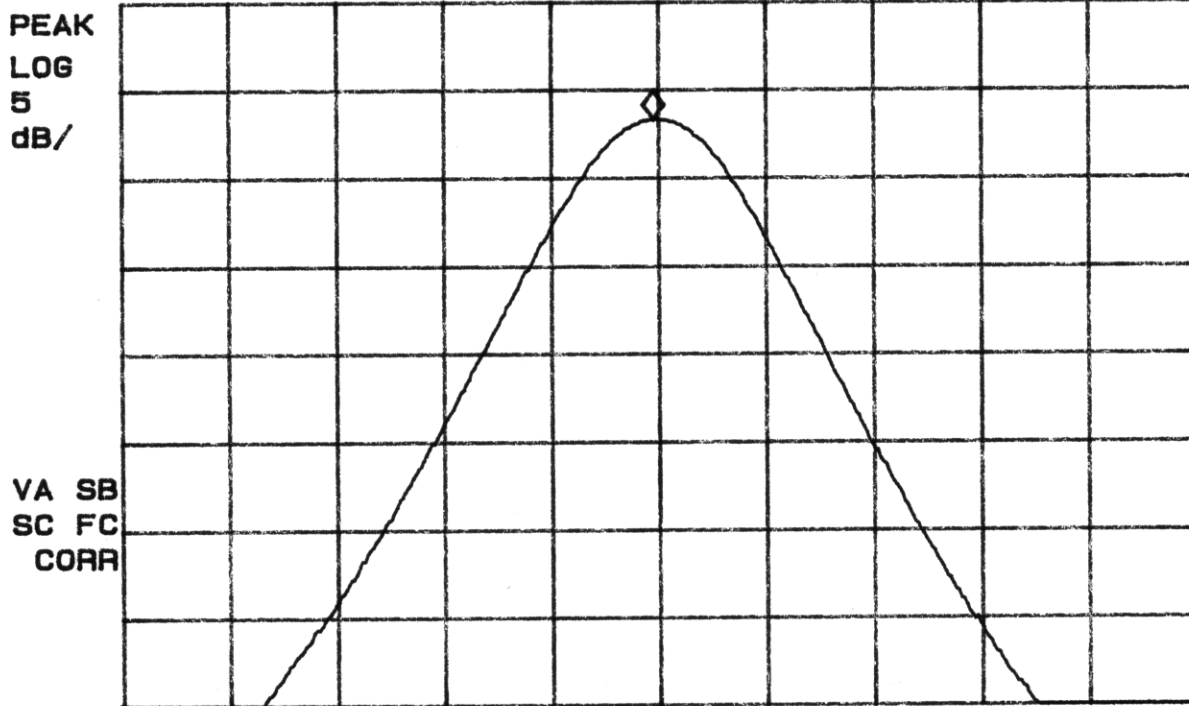


CENTER 465.00097 MHz SPAN 77.30 kHz
#RES BW 10 kHz #VBW 10 kHz SWP 30.0 msec

10:04:34 AUG 12, 1999

LX5120, STABILITY, MID FREQ, 1.0V MKR 465.00058 MHz
REF 110.0 dB μ V AT 10 dB PG -21.0 dB 103.35 dB μ V

No user
Menu



CENTER 465.00097 MHz SPAN 77.30 kHz
#RES BW 10 kHz #VBW 10 kHz SWP 30.0 msec

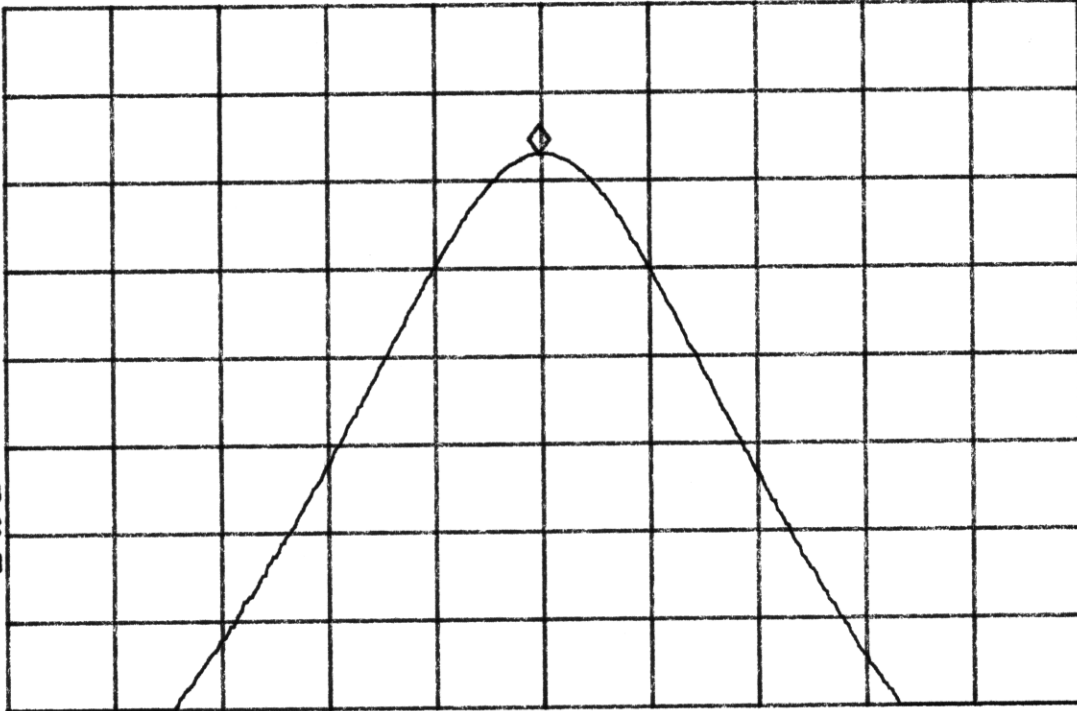
11:00:22 AUG 12, 1999

LX5120, STABILITY, HIGH FREQ, 1.0V MKR 469.98808 MHz
REF 110.0 dBμV AT 10 dB PG -21.0 dB 101.53 dBμV

No user
Menu

PEAK
LOG
5
dB/

VA SB
SC FC
CORR



CENTER 469.98827 MHz
#RES BW 10 KHz

#VBW 10 KHz

SPAN 77.30 kHz
SWP 30.0 msec

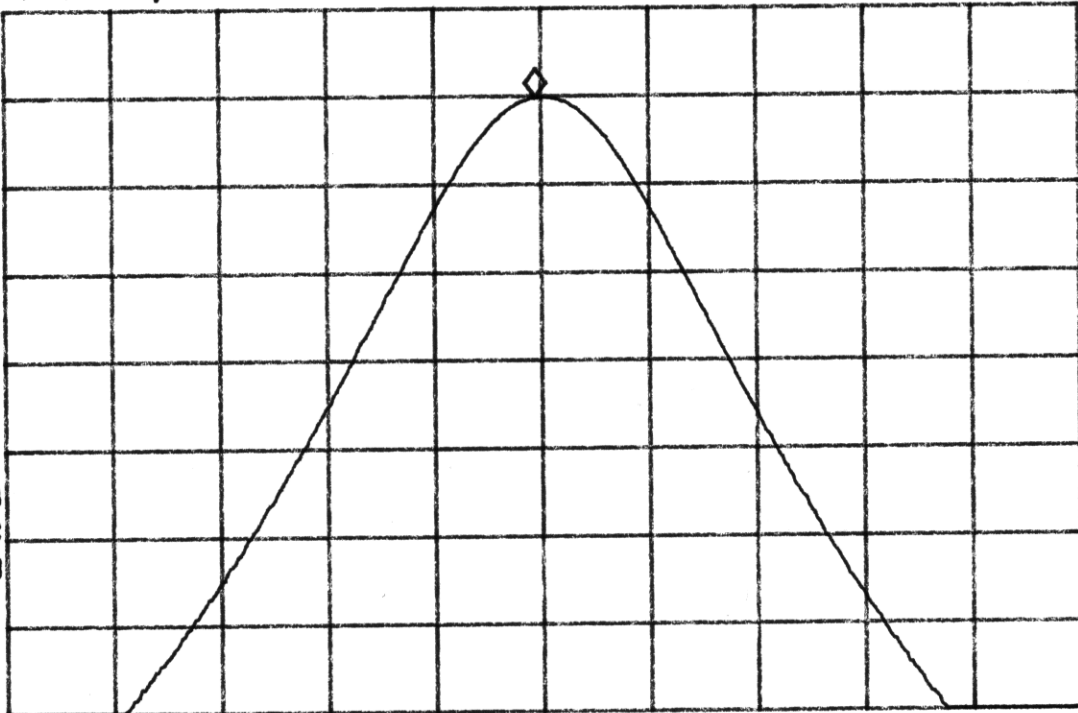
11:02:26 AUG 12, 1999

LX5120, STABILITY, HIGH FREQ, 1.5V MKR 469.98789 MHz
REF 110.0 dBμV AT 10 dB PG -21.0 dB 104.94 dBμV

No user
Menu

PEAK
LOG
5
dB/

VA SB
SC FC
CORR



CENTER 469.98827 MHz
#RES BW 10 KHz

#VBW 10 KHz

SPAN 77.30 kHz
SWP 30.0 msec