

15:09:00 AUG 10, 1999

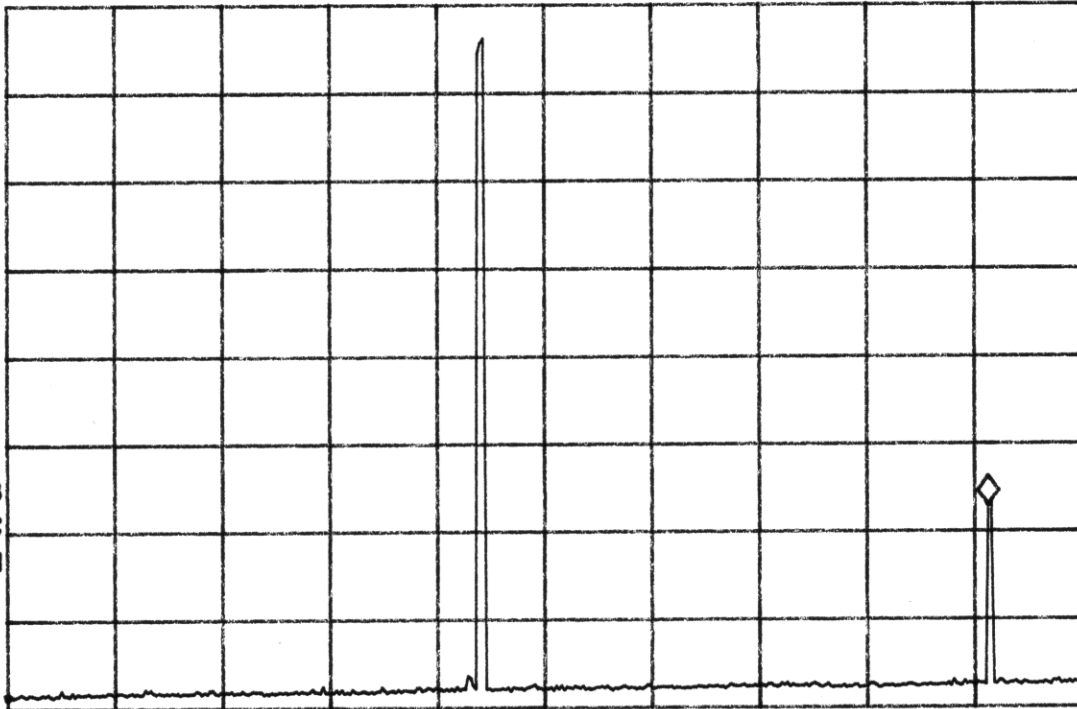
LX-5120, SPURIOUS EMISSIONS-LOW FREQ  
REF 110.0 dBμV #AT 0 dB PG -21.0 dB

MKR 915.1 MHz  
53.04 dBμV

No user  
Menu

PEAK  
LOG  
10  
dB/

VA SB  
SC FC  
CORR



START 30.0 MHz  
#RES BW 10 KHz

#VBW 10 KHz

STOP 1.0000 GHz  
SWP 29.1 sec

15:10:29 AUG 10, 1999

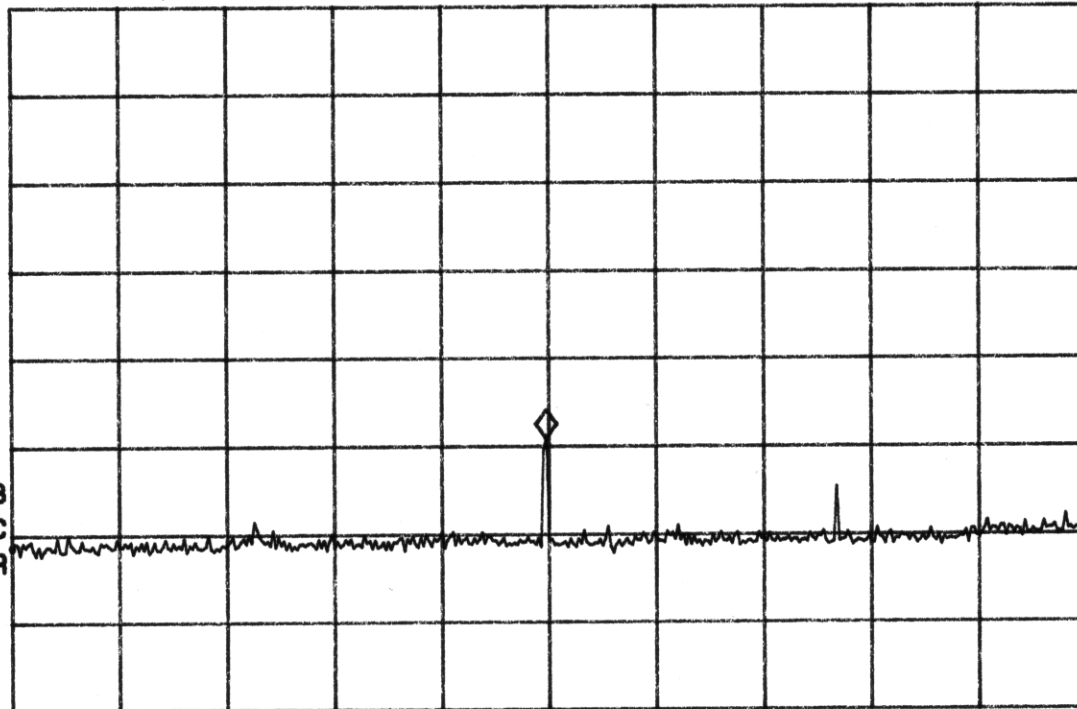
LX-5120, SPURIOUS EMISSIONS-LOW FREQ  
REF 110.0 dBμV #AT 0 dB PG -21.0 dB

MKR 1.846 GHz  
60.92 dBμV

No user  
Menu

PEAK  
LOG  
10  
dB/

VA SB  
SC FC  
CORR



START 1.000 GHz  
#RES BW 1.0 MHz

#VBW 1 MHz

STOP 2.700 GHz  
SWP 34.0 msec

15: 12: 40 AUG 10, 1999

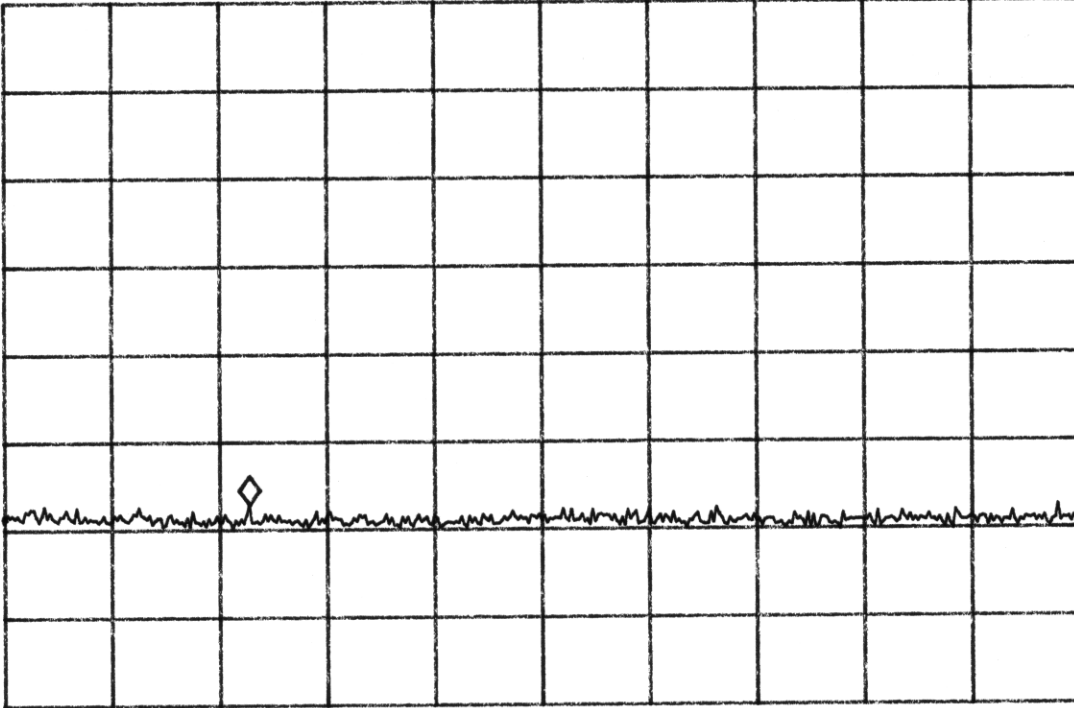
LX-5120, SPURIOUS EMISSIONS-LOW FREQ  
REF 110.0 dBμV #AT 0 dB PG -21.0 dB

MKR 3.223 GHz  
52.93 dBμV

No user  
Menu

PEAK  
LOG  
10  
dB/

VA SB  
SC FC  
CORR



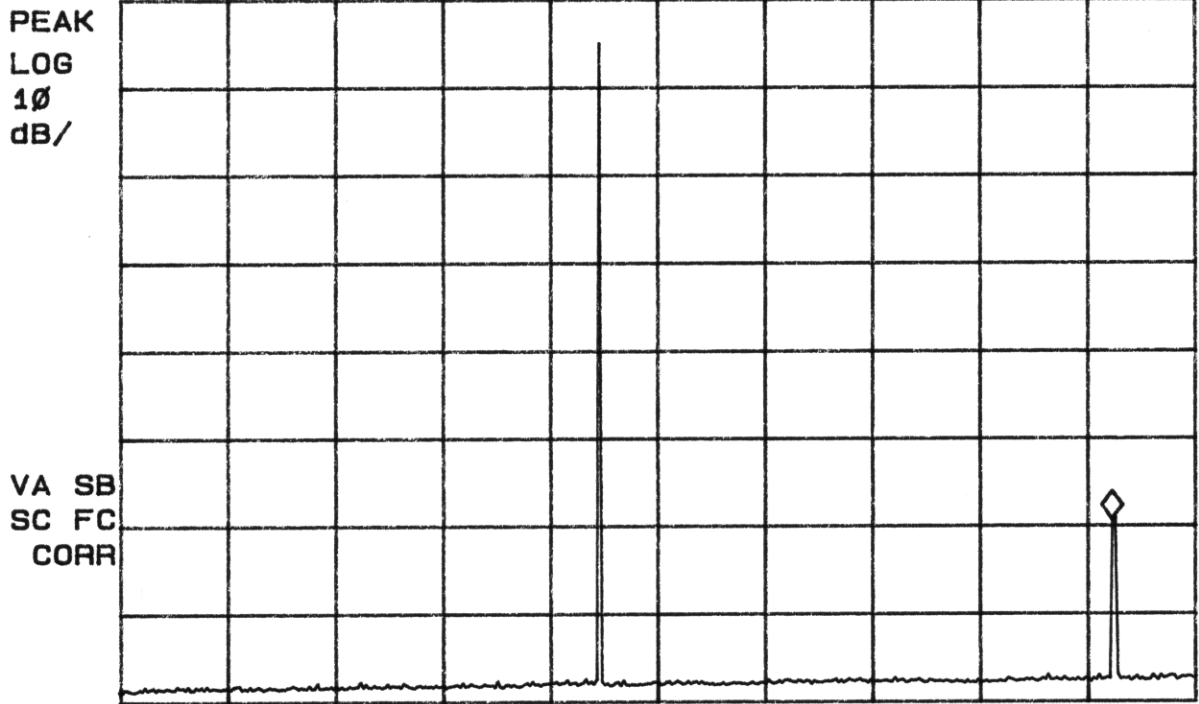
START 2.700 GHz  
#RES BW 1.0 MHz

#VBW 1 MHz

STOP 5.000 GHz  
SWP 46.0 msec

15:00:35 AUG 10, 1999  
LX-5120, SPURIOUS EMISSIONS-MID FREQ MKR 924.8 MHz  
REF 110.0 dBμV #AT 0 dB PG -21.0 dB 50.75 dBμV

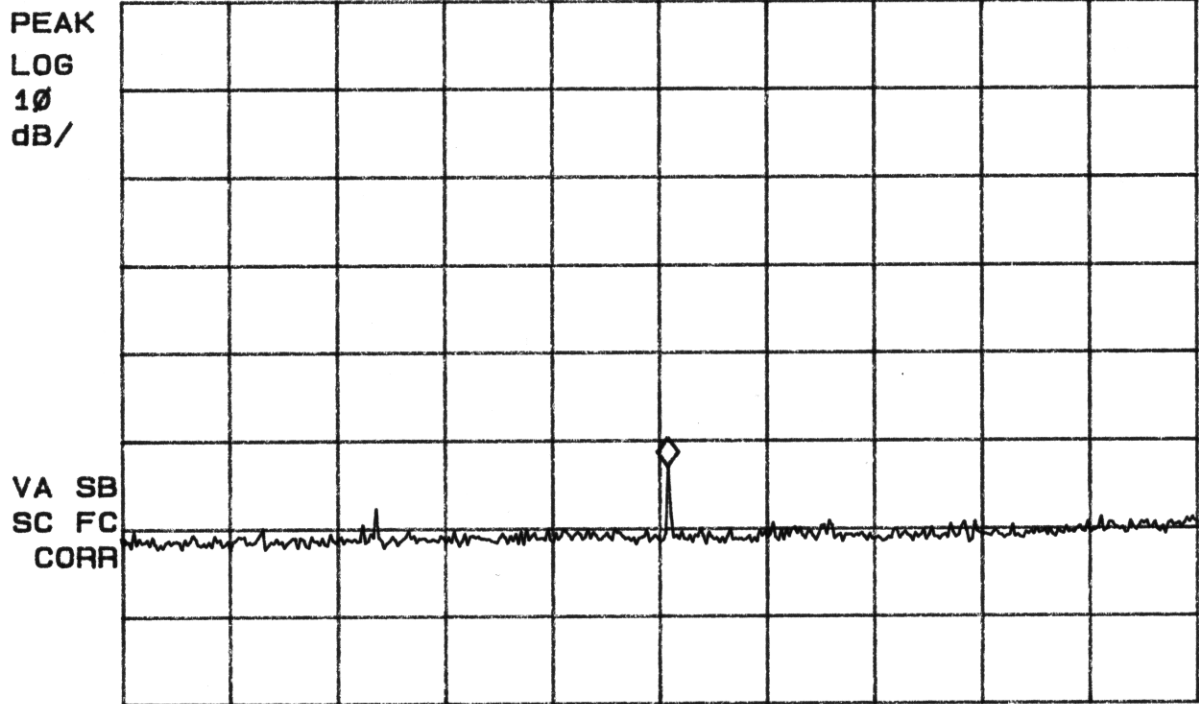
No user  
Menu



START 30.0 MHz STOP 1.0000 GHz  
#RES BW 10 KHz #VBW 10 KHz SWP 29.1 sec

15:02:34 AUG 10, 1999  
LX-5120, SPURIOUS EMISSIONS-MID FREQ MKR 1.863 GHz  
REF 110.0 dBμV #AT 0 dB PG -21.0 dB 57.10 dBμV

No user  
Menu



START 1.000 GHz STOP 2.700 GHz  
#RES BW 1.0 MHz #VBW 1 MHz SWP 34.0 msec

15:04:38 AUG 10, 1999

LX-5120, SPURIOUS EMISSIONS-MID FREQ

MKR 2.792 GHz

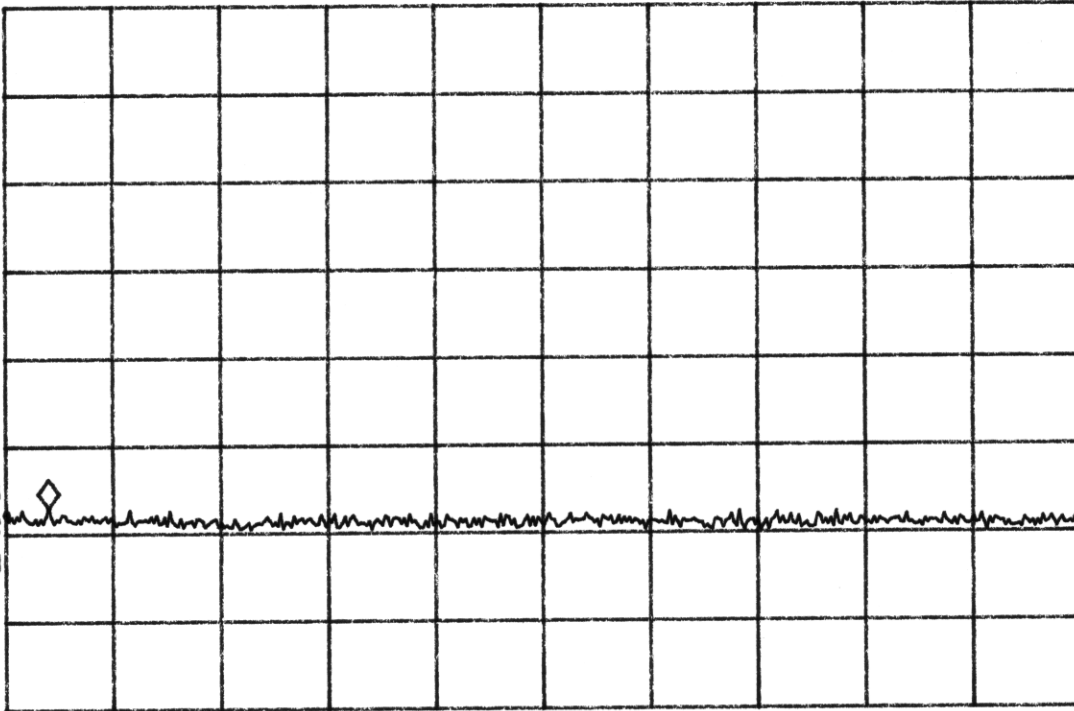
REF 110.0 dBμV #AT 0 dB PG -21.0 dB

53.06 dBμV

No user  
Menu

PEAK  
LOG  
10  
dB/

VA SB  
SC FC  
CORR



START 2.700 GHz

#RES BW 1.0 MHz

#VBW 1 MHz

STOP 5.000 GHz

SWP 46.0 msec

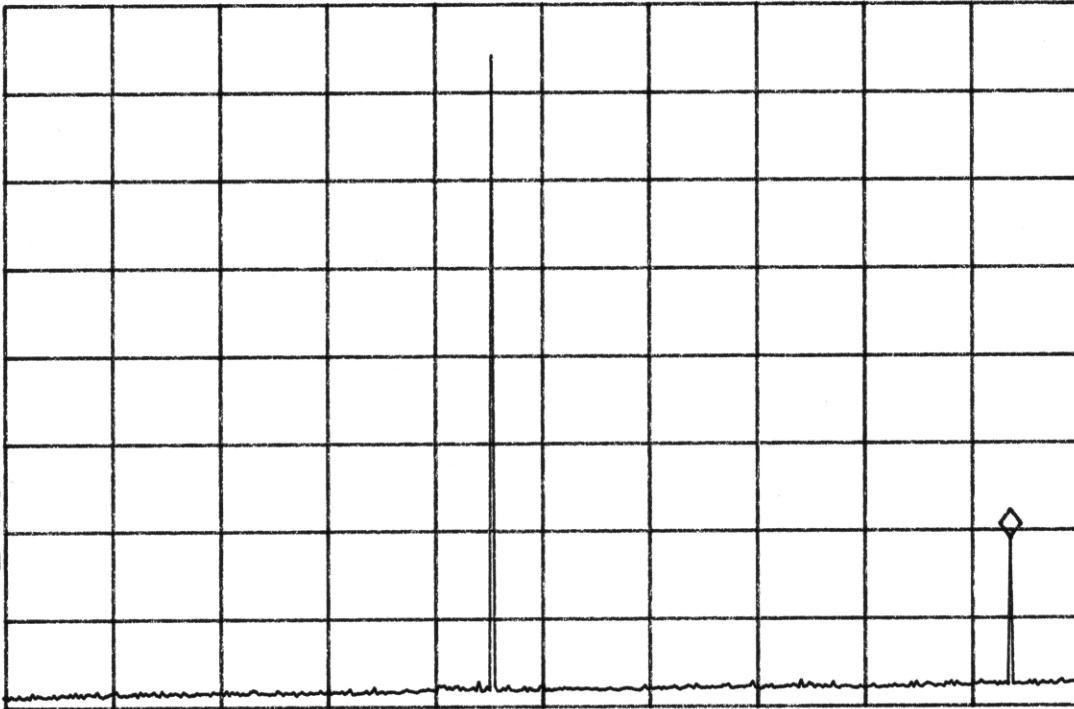
14:49:28 AUG 10, 1999

LX-5120, SPURIOUS EMISSIONS-HIGH XMIT FREQ 936.9 MHz  
REF 110.0 dBμV #AT 0 dB PG -21.0 dB 49.11 dBμV

No user Menu

PEAK  
LOG  
10  
dB/

VA SB  
SC FC  
CORR



START 30.0 MHz #RES BW 10 kHz #VBW 10 kHz STOP 1.0000 GHz SWP 29.1 sec

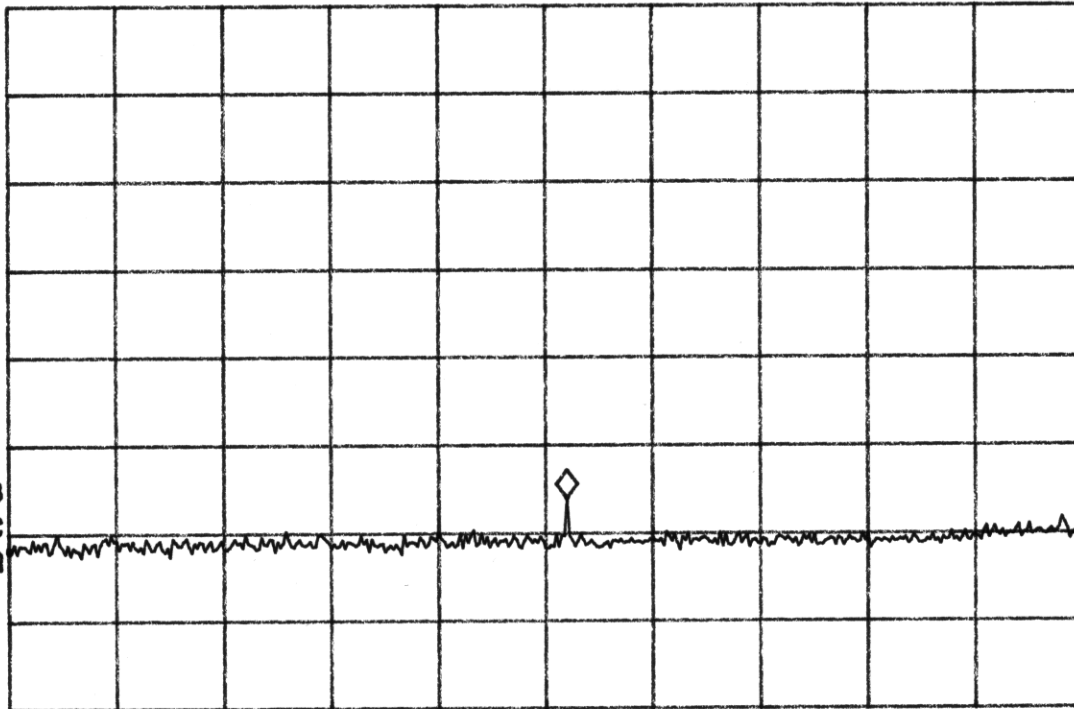
14:51:33 AUG 10, 1999

LX-5120, SPURIOUS EMISSIONS-HIGH XMIT FREQ 1.884 GHz  
REF 110.0 dBμV #AT 0 dB PG -21.0 dB 53.97 dBμV

No user Menu

PEAK  
LOG  
10  
dB/

VA SB  
SC FC  
CORR



START 1.000 GHz #RES BW 1.0 MHz #VBW 1 MHz STOP 2.700 GHz SWP 34.0 msec

14:53:32 AUG 10, 1999

LX-5120, SPURIOUS EMISSIONS-HIGH FREQ

MKR 2.792 GHz

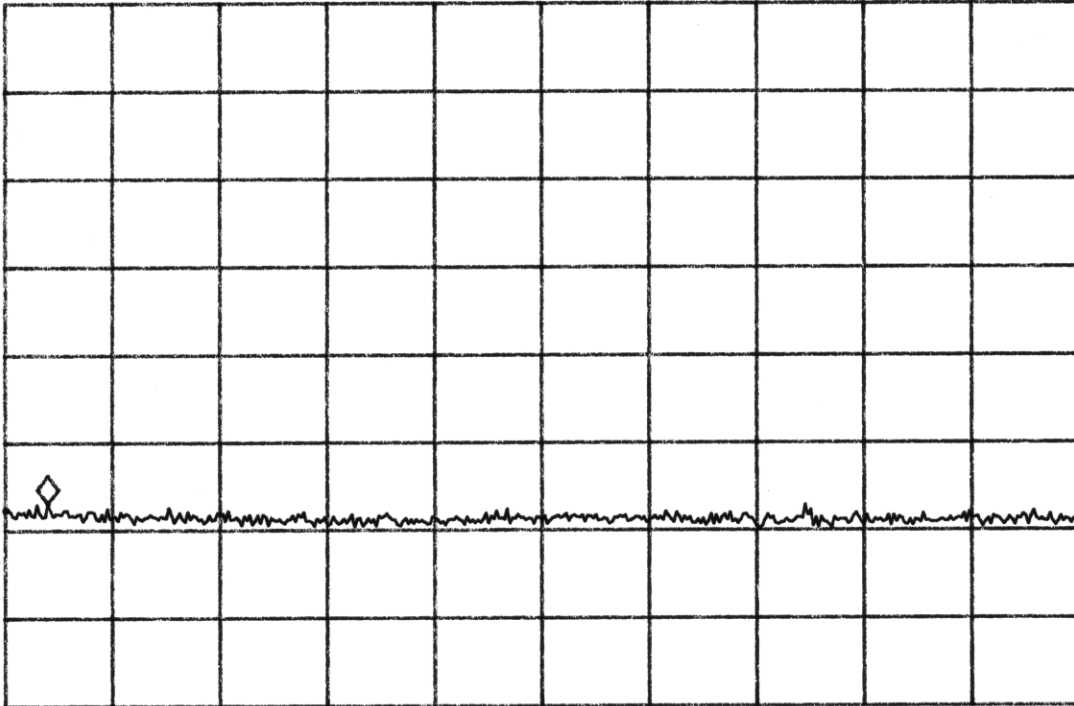
REF 110.0 dB $\mu$ V #AT 0 dB PG -21.0 dB

53.11 dB $\mu$ V

No user  
Menu

PEAK  
LOG  
10  
dB/

VA SB  
SC FC  
CORR



START 2.700 GHz

#RES BW 1.0 MHz

#VBW 1 MHz

STOP 5.000 GHz

SWP 46.0 msec