

15: 33: 26 AUG 10, 1999

HLX-501, SPURIOUS EMISSIONS-LOW FREQ

MKR 917.5 MHz

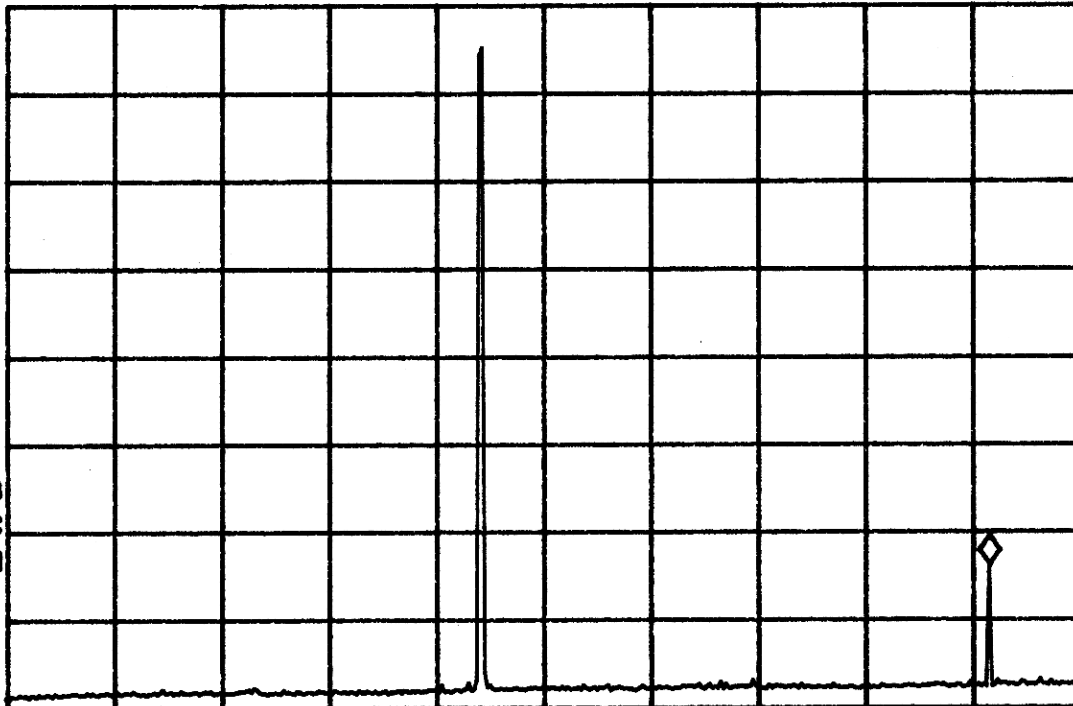
REF 110.0 dB μ V #AT 0 dB PG -21.0 dB

46.30 dB μ V

No user Menu

PEAK
LOG
10
dB/

VA SB
SC FC
CORR



START 30.0 MHz

#RES BW 10 kHz

#VBW 10 kHz

STOP 1.0000 GHz

SWP 29.1 sec

15: 40: 01 AUG 10, 1999

HLX-501, SPURIOUS EMISSIONS-LOW FREQ

MKR 1.383 GHz

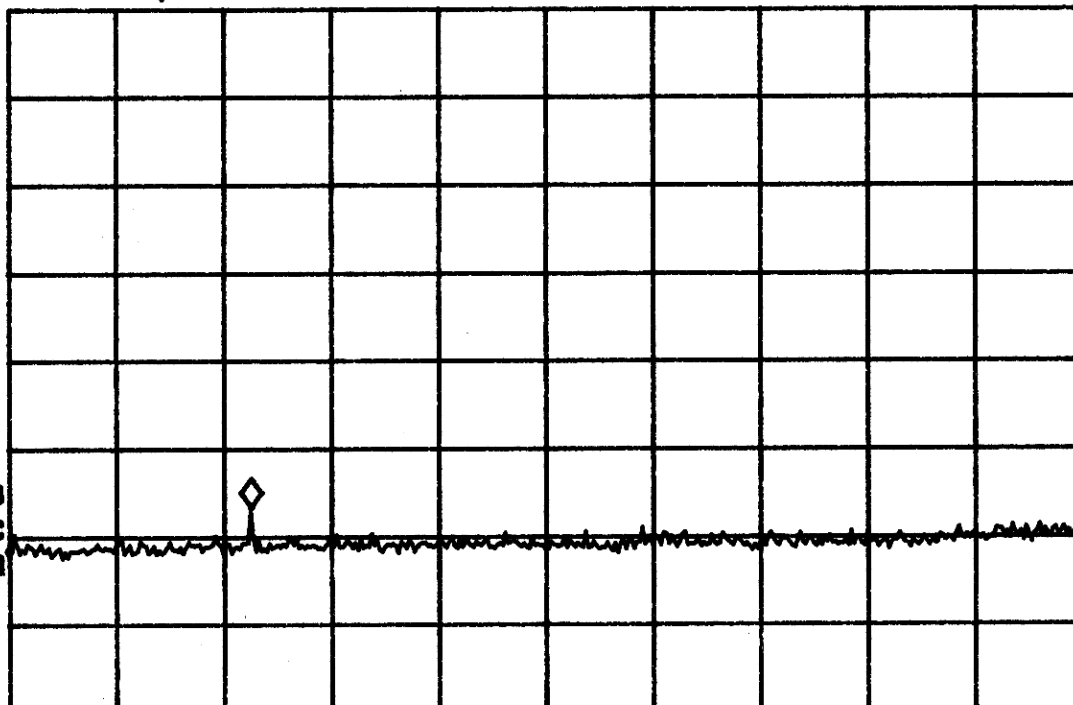
REF 110.0 dB μ V #AT 0 dB PG -21.0 dB

53.42 dB μ V

No user Menu

PEAK
LOG
10
dB/

MA SB
SC FC
CORR



START 1.000 GHz

#RES BW 1.0 MHz

#VBW 1 MHz

STOP 2.700 GHz

SWP 34.0 msec

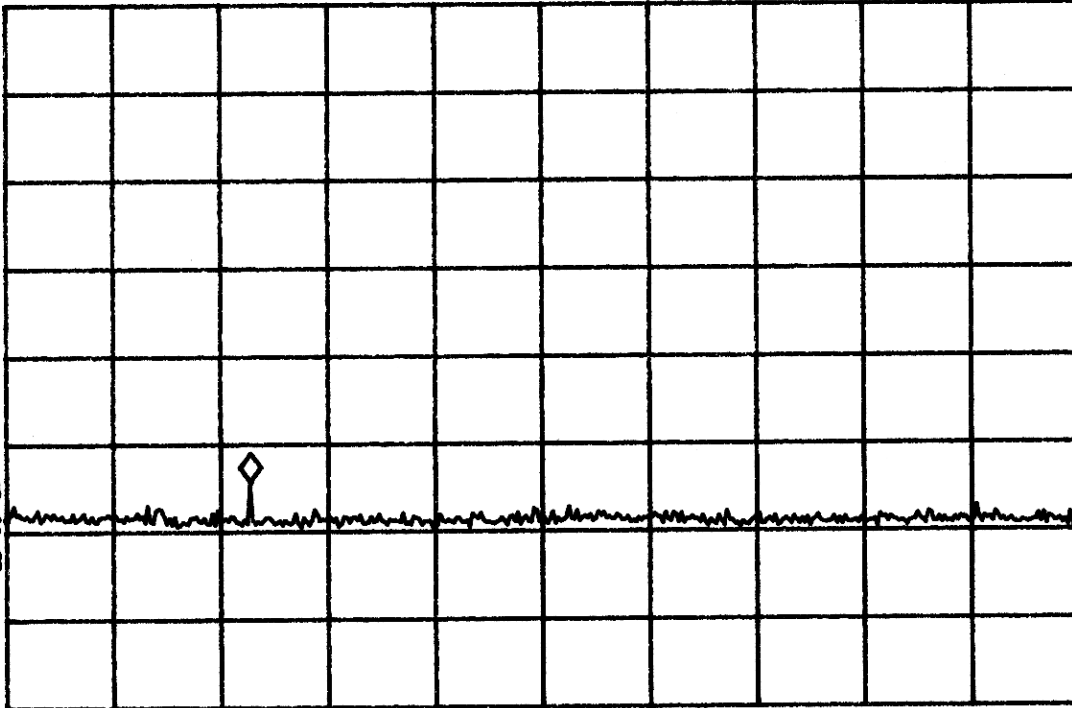
15:41:45 AUG 10, 1999

HLX-501, SPURIOUS EMISSIONS-LOW FREQ
REF 110.0 dB μ V #AT 0 dB PG -21.0 dB

MKR 3.223 GHz
55.78 dB μ V

No user
Menu

PEAK
LOG
10
dB/



START 2.700 GHz
#RES BW 1.0 MHz

#VBW 1 MHz

STOP 5.000 GHz
SWP 46.0 msec

15:44:56 AUG 10, 1999

HLX-501, SPURIOUS EMISSIONS-MID FREQ

MKR 927.2 MHz

REF 110.0 dBμV

#AT 0 dB

PG -21.0 dB

45.97 dBμV

No user Menu

PEAK
LOG
10
dB/

VA SB
SC FC
CORR



START 30.0 MHz

#RES BW 10 KHz

#VBW 10 KHz

STOP 1.0000 GHz

SWP 29.1 sec

15:46:41 AUG 10, 1999

HLX-501, SPURIOUS EMISSIONS-MID FREQ

MKR 1.400 GHz

REF 110.0 dBμV

#AT 0 dB

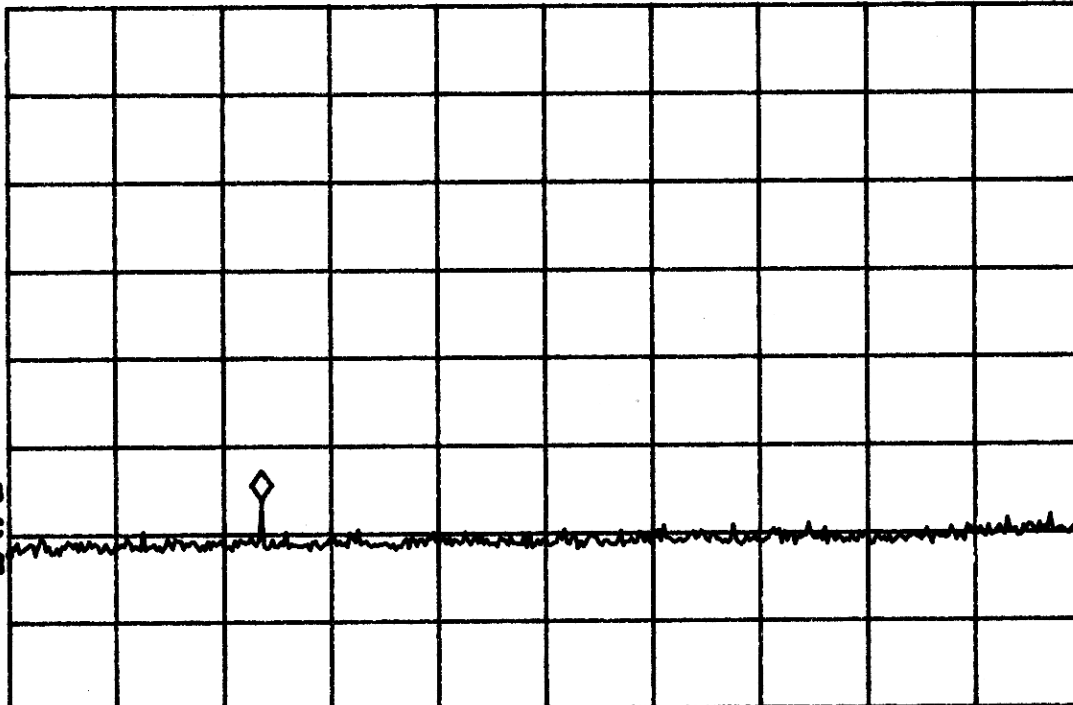
PG -21.0 dB

53.97 dBμV

No user Menu

PEAK
LOG
10
dB/

VA SB
SC FC
CORR



START 1.000 GHz

#RES BW 1.0 MHz

#VBW 1 MHz

STOP 2.700 GHz

SWP 34.0 msec

15:48:50 AUG 10, 1999

HLX-501, SPURIOUS EMISSIONS-MID FREQ

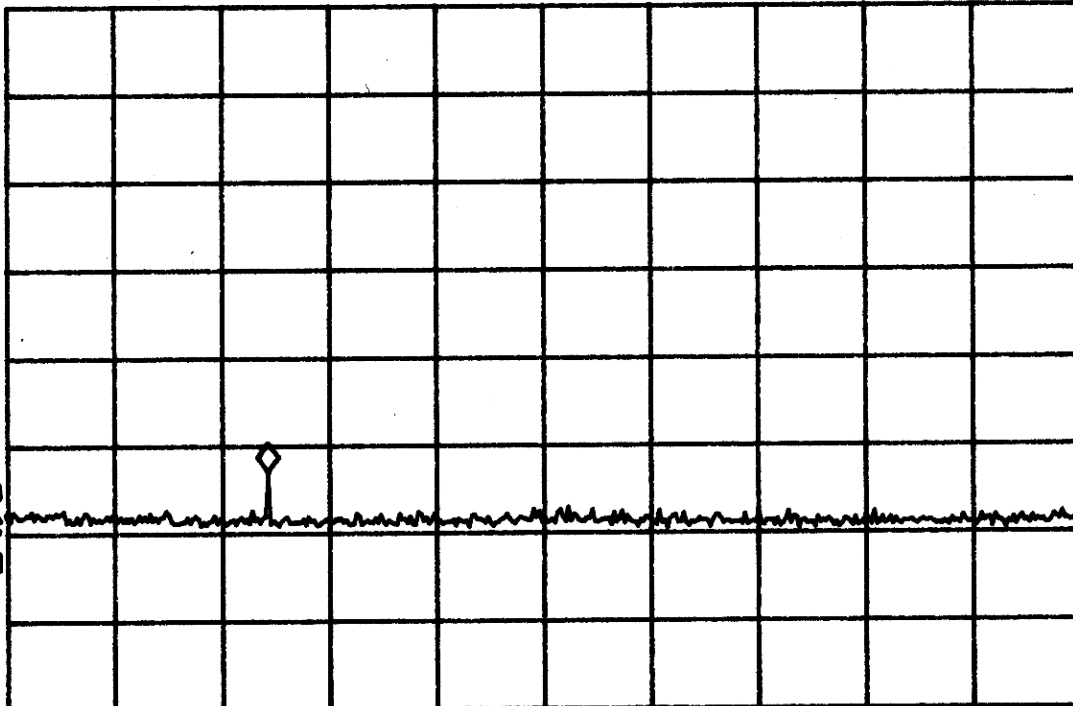
MKR 3.250 GHz

REF 110.0 dB μ V #AT 0 dB PG -21.0 dB

57.11 dB μ V

No user
Menu

PEAK
LOG
10
dB/



VA SB
SC FC
CORR

START 2.700 GHz
#RES BW 1.0 MHz

#VBW 1 MHz

STOP 5.000 GHz
SWP 40.0 msec

15:53:27 AUG 10, 1999

HLX-501, SPURIOUS EMISSIONS-HIGH FREQ

MKR 936.9 MHz

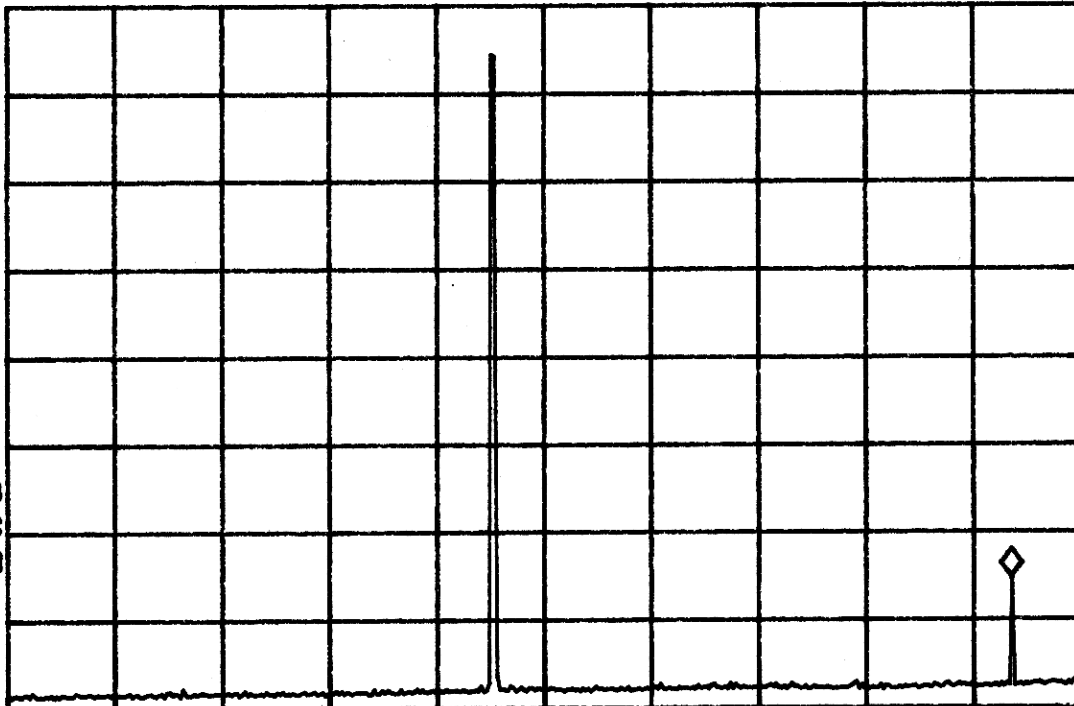
REF 110.0 dB μ V #AT 0 dB PG -21.0 dB

44.83 dB μ V

No user Menu

PEAK
LOG
10
dB/

VA SB
SC FC
CORR



START 30.0 MHz

#RES BW 10 kHz

#VBW 10 kHz

STOP 1.0000 GHz

SWP 29.1 sec

15:56:27 AUG 10, 1999

HLX-501, SPURIOUS EMISSIONS-HIGH FREQ

MKR 2.645 GHz

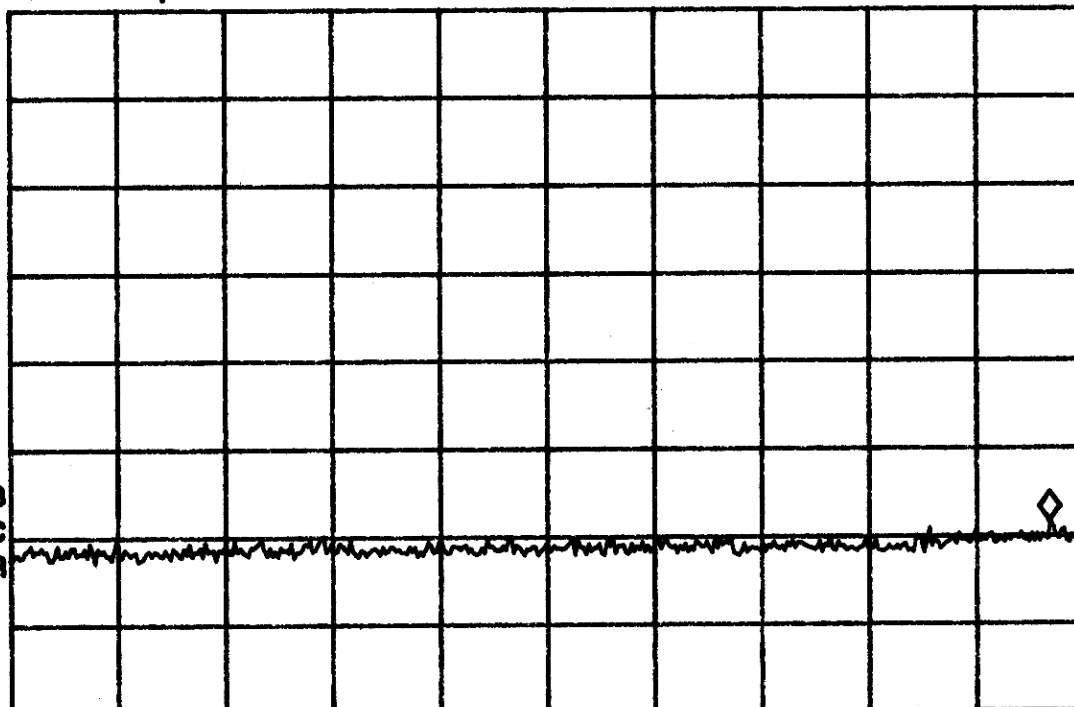
REF 110.0 dB μ V #AT 0 dB PG -21.0 dB

51.73 dB μ V

No user Menu

PEAK
LOG
10
dB/

VA SB
SC FC
CORR



START 1.000 GHz

#RES BW 1.0 MHz

#VBW 1 MHz

STOP 2.700 GHz

SWP 34.0 msec

15:58:20 AUG 10, 1999

HLX-501, SPURIOUS EMISSIONS-HIGH FREQ

MKR 3.177 GHz

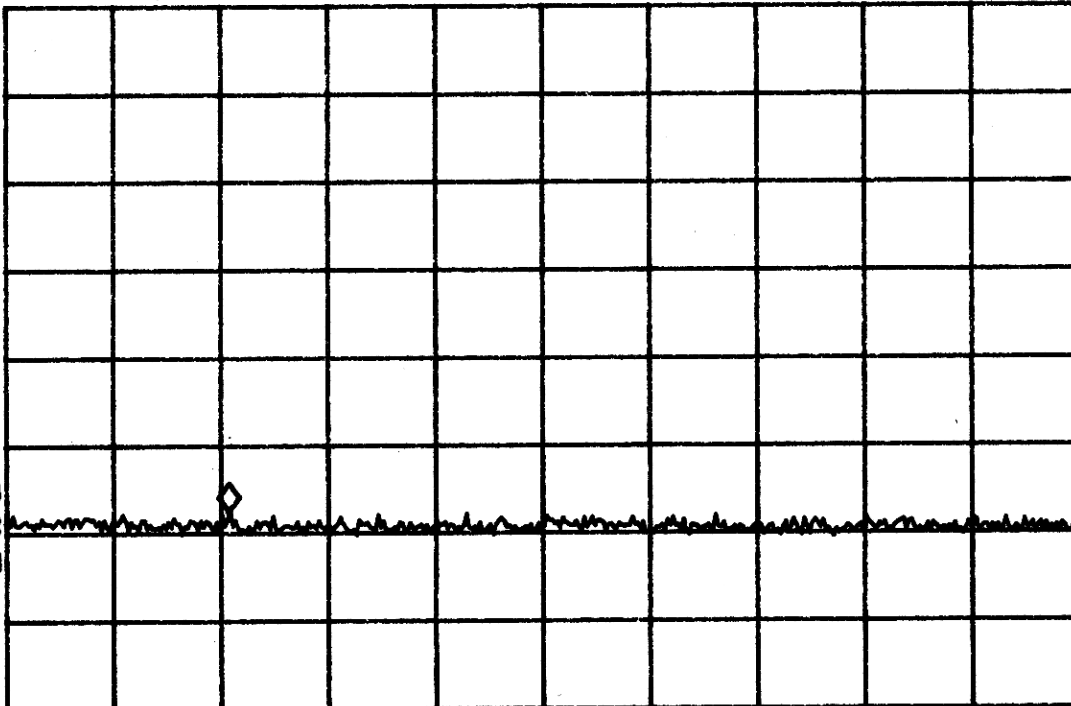
REF 110.0 dB μ V #AT 0 dB PG -21.0 dB

52.55 dB μ V

No user
Menu

PEAK
LOG
10
dB/

VA SB
SC FC
CORR



START 2.700 GHz

#RES BW 1.0 MHz

#VBW 1 MHz

STOP 5.000 GHz

SWP 46.0 msec