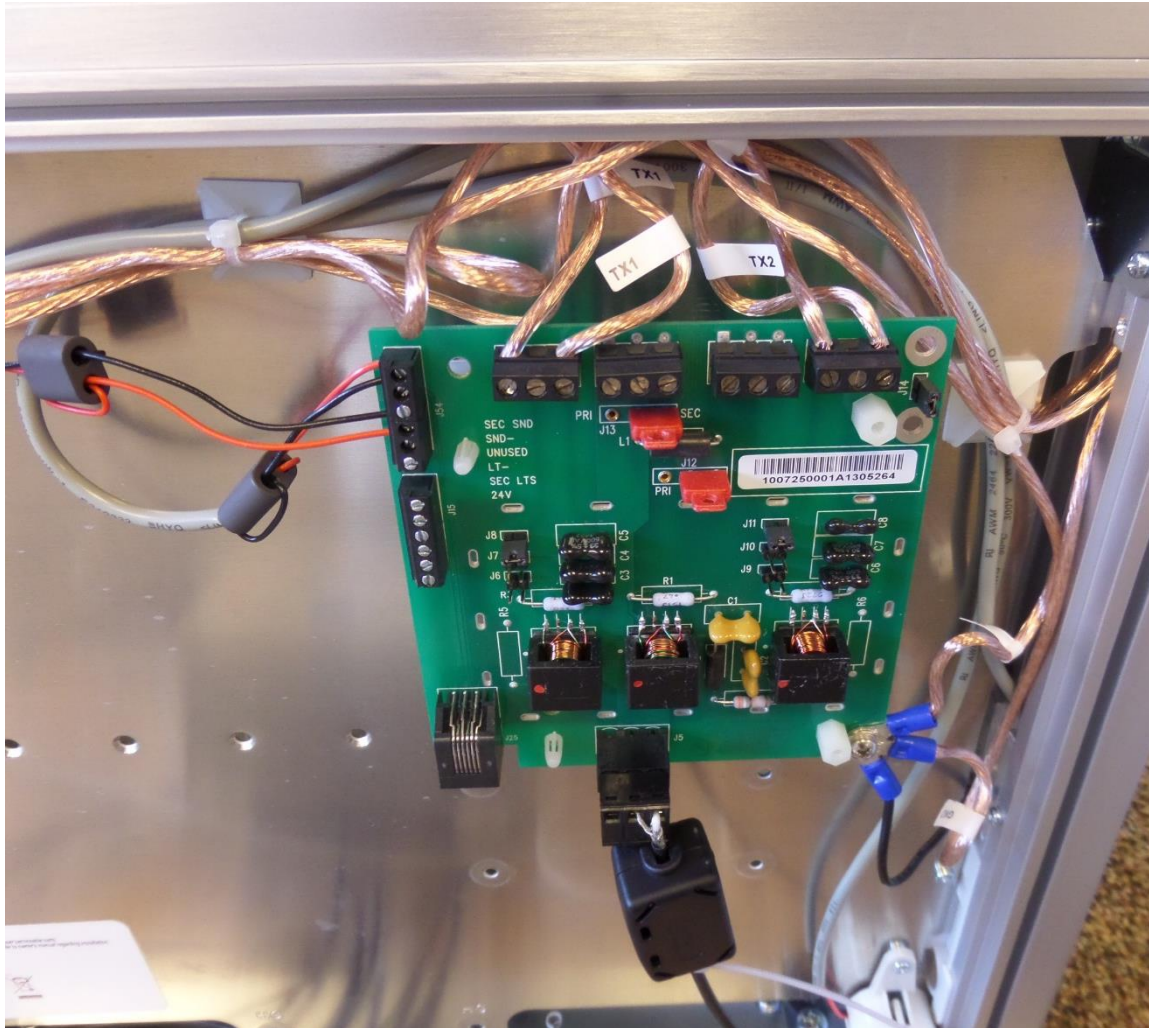


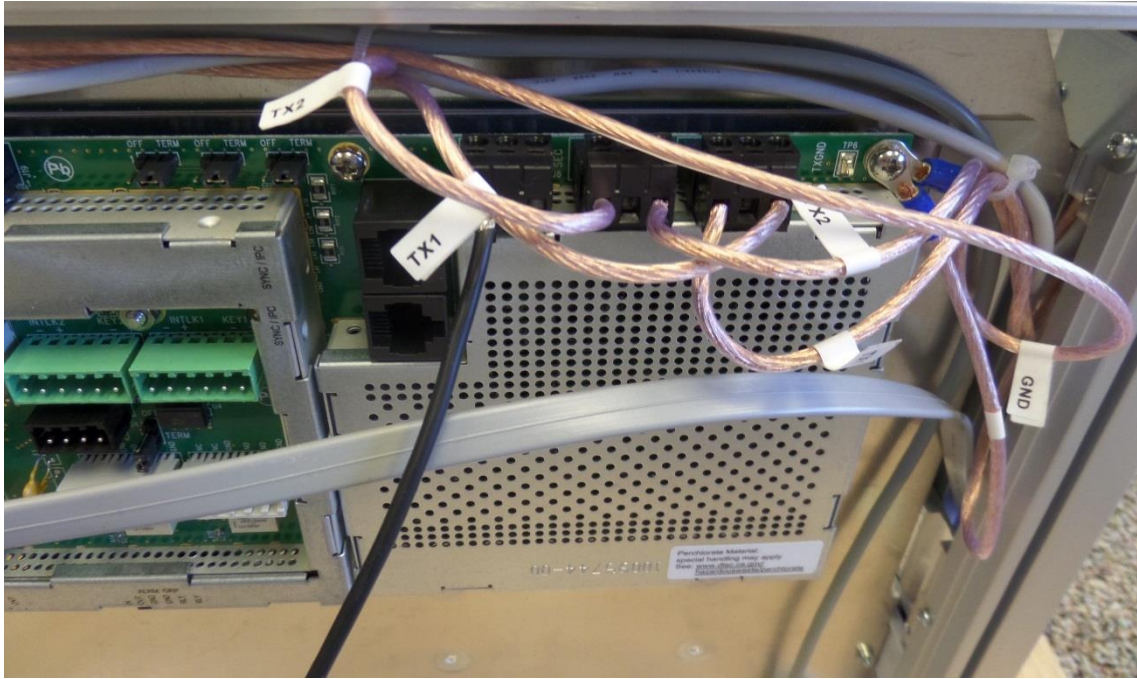
Photo documentation of the EUT
Model: E10 RF RFID ECO Variant 2.0

Internal Views of HOST:

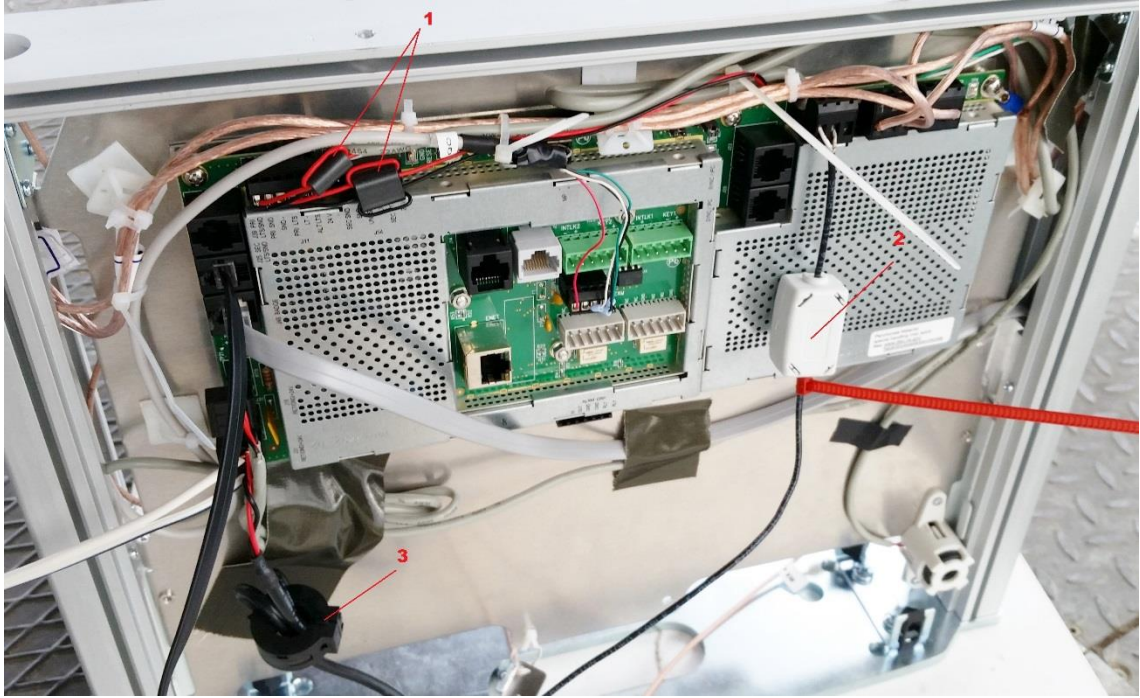
Coupler board RF antenna connection:



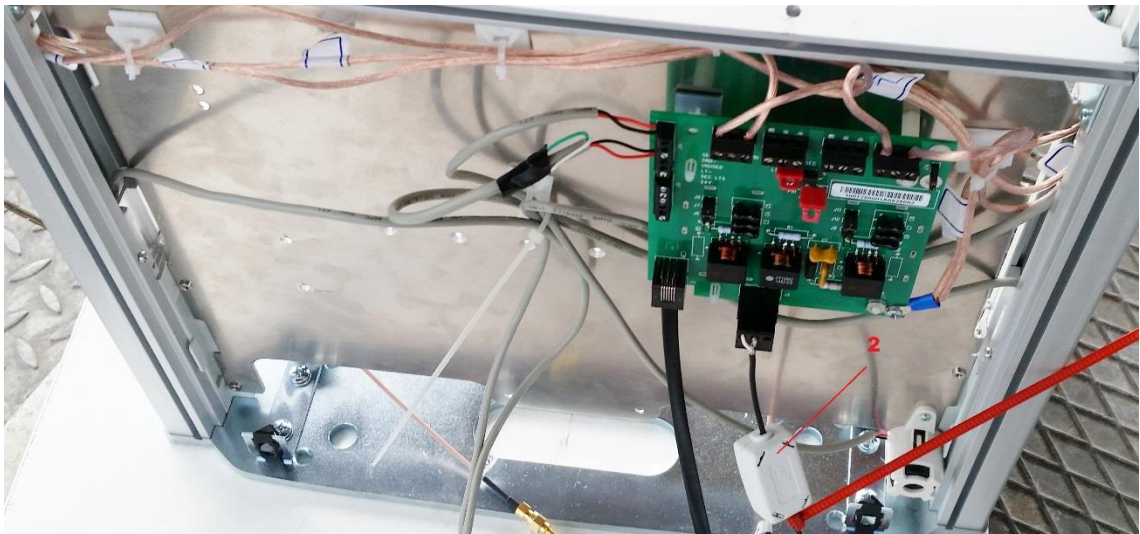
RF antenna connection:



E10 2.0 PSB:



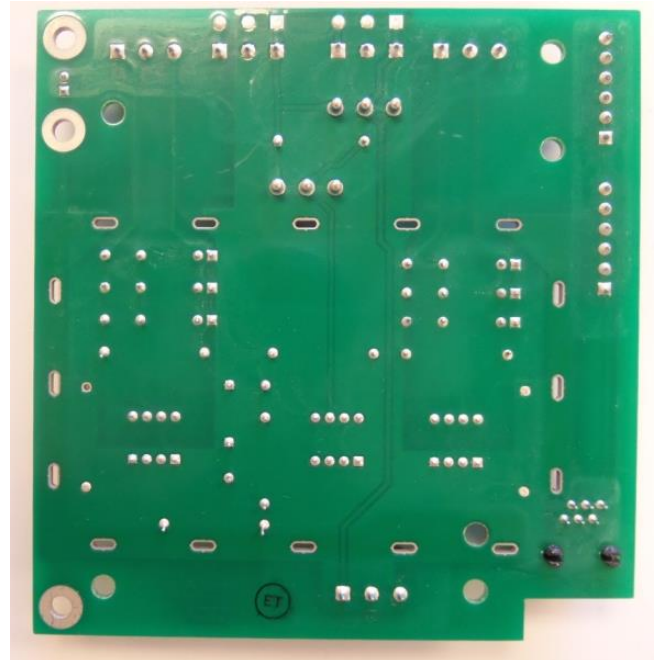
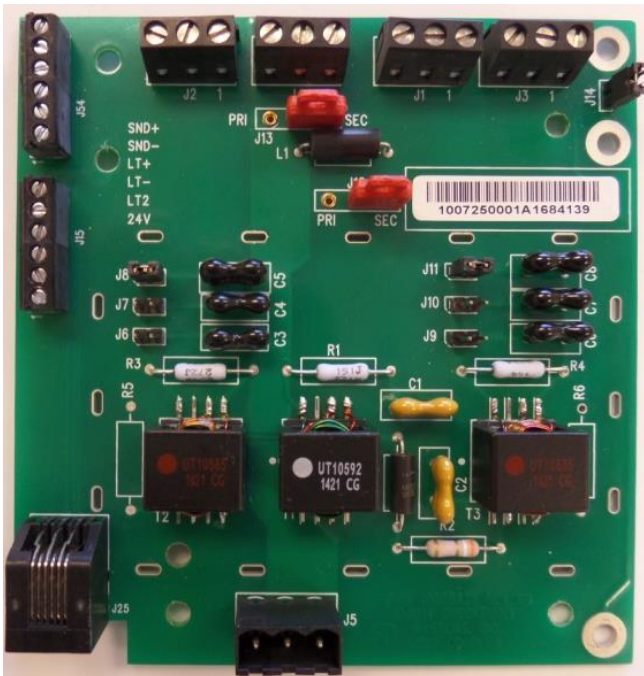
E10 2.0 SSB:



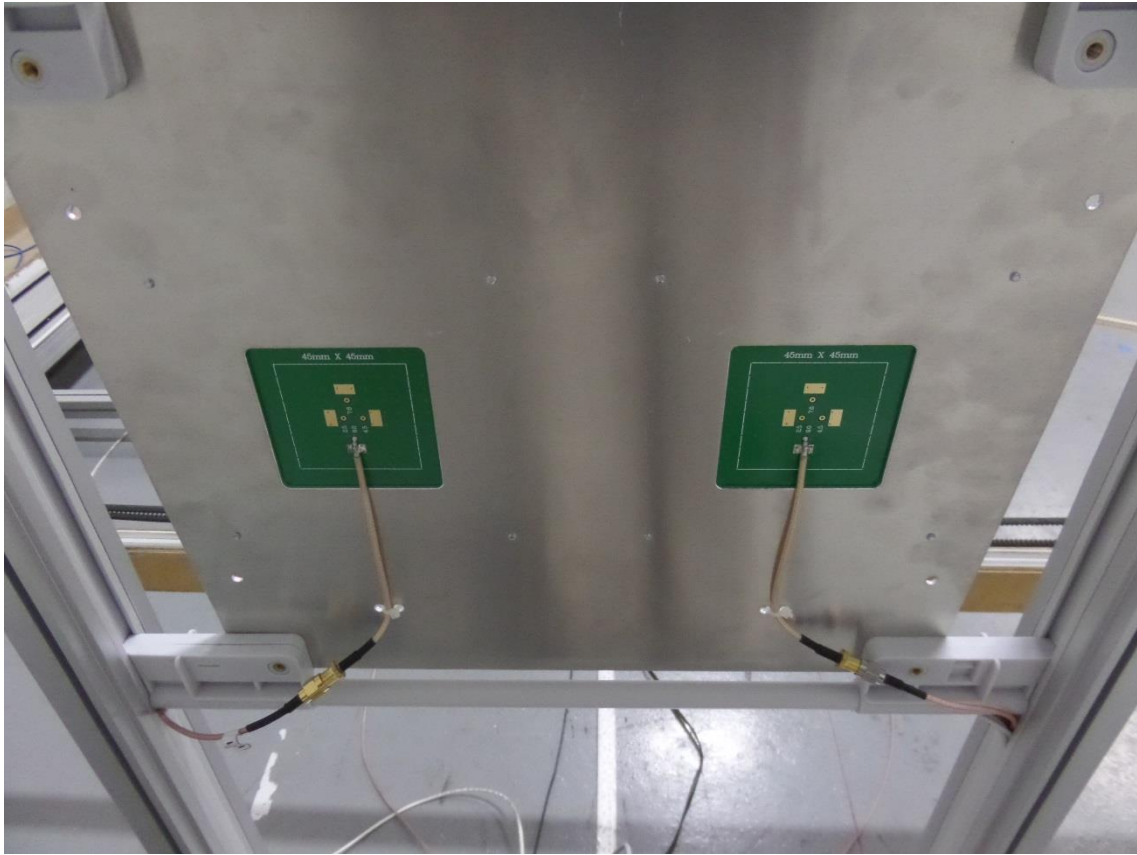
RFID I/O Board:



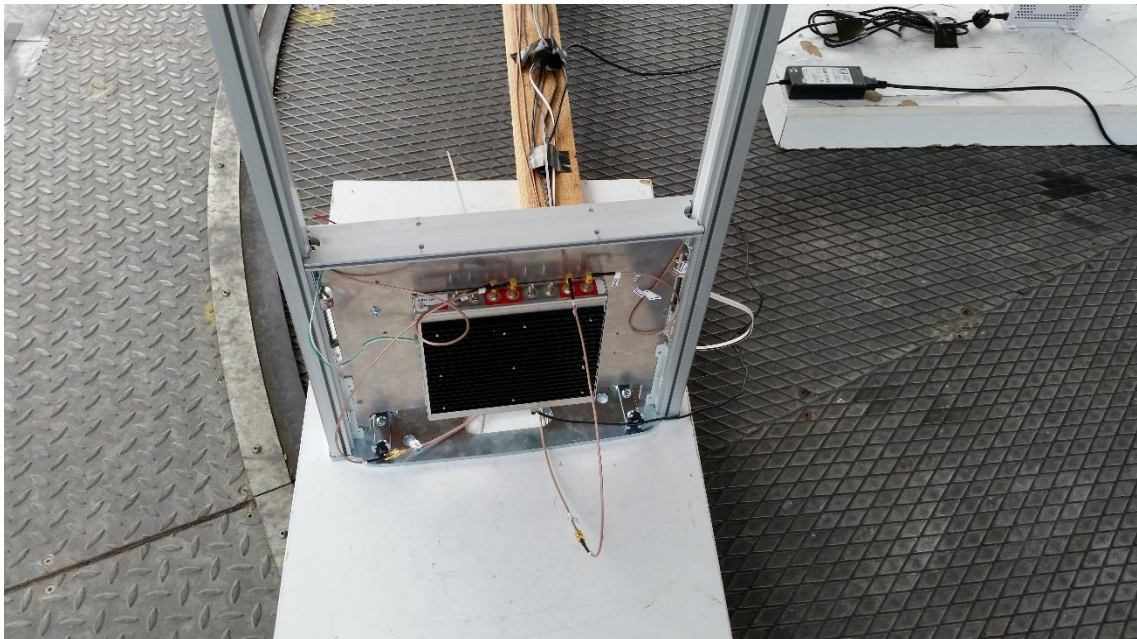
PCB, A1127 COUPLER W/L&S, EVOLVE ECO Board:



Patch antenna connection:



Position of the UHF RFID reader:



Evolve Electronic TR7240 RF Board:

